



Officials: Melissa Barlow, Julie Krommenhoek, Kaili Kimura

Southern Utah - 44

Record: 8-5

NO.	Name	Min	FG	3P	FT	Rebounds			Fouls		TP	AS	TO	ST	Blocks		+/-
			M-A	M-A	M-A	OR	DR	TOT	PF	FD					BS	BA	
40	Darri Frandsen	F 27:12	4-10	0-1	5-8	3	4	7	3	6	13	0	1	2	2	0	-3
2	Margarita Satini	G 14:14	0-1	0-1	0-0	0	1	1	0	1	0	0	4	0	0	0	-7
10	Liz Graves	G 16:29	0-3	0-0	1-2	1	3	4	2	2	1	1	2	0	0	6	
15	Cherita Daugherty	G 34:23	3-9	1-3	3-4	0	5	5	3	4	10	0	5	0	1	-2	
21	Madelyn Eaton	G 38:54	3-8	1-2	4-4	3	2	5	1	4	11	2	1	1	1	-9	
23	Kinsley Barrington	16:25	1-3	0-2	0-0	3	1	4	2	0	2	0	1	0	0	-11	
24	Daylani Ballena	25:24	0-3	0-2	0-0	0	3	3	1	1	0	4	3	0	0	-7	
14	Pyper Thornberry	06:37	0-1	0-0	0-0	0	0	0	0	0	0	0	1	1	1	-6	
11	Megan Kamps	11:09	2-3	0-0	0-0	0	1	1	1	1	4	0	1	1	0	-9	
34	Samantha Johnston	07:05	1-2	1-2	0-0	0	0	0	1	0	3	1	0	0	0	-8	
32	Rebecca Black	02:08	0-0	0-0	0-0	0	0	0	0	0	0	0	0	0	0	1	
Team						2	0	2			0		0				
Totals			14-43	3-13	13-18	12	20	32	14	19	44	8	19	5	4	1	-11

Technical Fouls::NONE

Shooting By Period		
1 st FG%	2-8	25.0%
3PT%	2-4	50.0%
FT%	2-2	100%
2 nd FG%	4-11	36.4%
3PT%	0-2	0.0%
FT%	1-3	33.3%
3 rd FG%	4-10	40.0%
3PT%	1-4	25.0%
FT%	4-5	80%
4 th FG%	4-14	28.6%
3PT%	0-3	0.0%
FT%	6-8	75%
GM FG%	14-43	32.6%
3PT%	3-13	23.1%
FT%	13-18	72.2%

Dead Ball Rebounds: 2, 0

Arizona St. - 55

Record: 9-6

NO.	Name	Min	FG	3P	FT	Rebounds			Fouls		TP	AS	TO	ST	Blocks		+/-
			M-A	M-A	M-A	OR	DR	TOT	PF	FD					BS	BA	
13	Maggie Besselink	F 20:53	2-7	0-0	0-0	3	0	3	5	0	4	1	2	2	0	1	1
20	Katelyn Levings	F 22:41	2-5	0-2	2-4	2	2	4	3	5	6	0	2	3	1	0	11
0	Taya Hanson	G 33:51	4-13	3-6	4-5	1	4	5	0	4	15	1	1	5	0	2	14
2	Jaddan Simmons	G 29:17	4-8	0-1	5-6	1	2	3	2	3	13	4	1	1	0	0	11
5	Jamie Loera	G 21:10	3-6	1-3	0-0	0	3	3	2	0	7	2	1	1	0	0	-1
3	Gabriela Bosquez	10:49	0-1	0-0	0-0	0	0	0	1	0	0	0	0	0	0	0	11
21	Sydnei Caldwell	17:28	1-7	0-1	1-2	1	1	2	1	1	3	0	1	0	0	1	3
22	Eboni Walker	17:10	2-5	0-0	0-0	2	5	7	2	0	4	1	3	2	0	0	13
24	Bre'yanna Sanders	13:04	0-0	0-0	0-0	2	0	2	1	1	0	0	1	0	0	0	-4
11	Sydney Erikstrup	07:25	1-1	1-1	0-0	0	1	1	2	0	3	0	0	0	0	0	-5
43	Imogen Greenslade	06:12	0-0	0-0	0-0	0	0	0	0	0	0	0	0	0	0	0	1
Team						4	2	6			0		1				
Totals			19-53	5-14	12-17	16	20	36	19	14	55	9	13	14	1	4	11

Technical Fouls::NONE

Shooting By Period		
1 st FG%	3-15	20.0%
3PT%	1-3	33.3%
FT%	5-6	83.3%
2 nd FG%	4-11	36.4%
3PT%	0-2	0.0%
FT%	4-5	80%
3 rd FG%	4-13	30.8%
3PT%	2-5	40.0%
FT%	2-4	50%
4 th FG%	8-14	57.1%
3PT%	2-4	50.0%
FT%	1-2	50%
GM FG%	19-53	35.8%
3PT%	5-14	35.7%
FT%	12-17	70.6%

Dead Ball Rebounds: 3, 0

	SUU	ASU
Biggest lead	0 (1 st 10:00)	14 (4 th 2:23)
Best Scoring Run	8(4 th 9:40)	8(1 st 4:40)
Lead Changes	0	
Times Tied	0	
Time with Lead	00:00	37:53

	SUU	ASU
Points from		
Turnovers	12	18
Paint	22	24
Second Chance	6	10
Fast Breaks	6	6
Bench	9	10

	Period by Period Scoring				
	1st	2nd	3rd	4th	TOT
SUU	8	9	13	14	44
ASU	12	12	12	19	55



Southern Utah at Arizona St.

02/08/21 Desert Financial Arena, Tempe
2020-21 Women's Basketball

Officials: Melissa Barlow, Julie Krommenhoek, Kaili Kimura

Period 1

Quarter Starters:

ASU	0 Hanson T	2 Simmons J	5 Loera J	13 Besselink M	20 Levings K
SUU	2 Satini M	10 Graves L	15 Daugherty C	21 Eaton M	40 Frandsen D

Game Time	ASU	Score	Diff	SUU
10:00	20 LEVINGS K jumpball won			40 FRANDSEN D jumpball lost
09:36	2 SIMMONS J 2pt FG in the paint, layup missed			
09:33				10 GRAVES L defensive rebound (1)
09:17				15 DAUGHERTY C turnover travel (1)
08:57	0 HANSON T 2pt FG from turnover outside the paint, step back jump shot missed			
08:53				10 GRAVES L defensive rebound (2)
08:45	20 LEVINGS K foul drawn (1)			10 GRAVES L foul offensive (1 - 1)
08:45				10 GRAVES L turnover offensive (1)
08:35	20 LEVINGS K 3pt FG from turnover, jump shot missed			
08:31				2 SATINI M defensive rebound (1)
08:19				2 SATINI M 3pt FG , jump shot missed
08:15	2 SIMMONS J defensive rebound (1)			
07:59	13 BESSELINK M 2pt FG in the paint, layup missed			
07:53	13 BESSELINK M offensive rebound (1)			
07:53	13 BESSELINK M 2pt FG second chance in the paint, layup made (2)	2-0	2	
07:27				40 FRANDSEN D 2pt FG outside the paint, turnaround jump shot missed
07:23				10 GRAVES L offensive rebound (3)
07:21				10 GRAVES L 2pt FG second chance in the paint, layup missed
07:19	0 HANSON T defensive rebound (1)			
07:10	13 BESSELINK M 2pt FG in the paint, driving layup missed			
07:10				40 FRANDSEN D defensive rebound (1)
07:10	jump ball situation			
07:10	2 SIMMONS J substitution out			
07:10	5 LOERA J substitution out			
07:10	13 BESSELINK M substitution out			
07:10	20 LEVINGS K substitution out			
07:10	3 BOSQUEZ G substitution in			
07:10	21 CALDWELL S substitution in			
07:10	22 WALKER E substitution in			
07:10	24 SANDERS B substitution in			
06:47	22 WALKER E steal (1)			40 FRANDSEN D turnover lost ball (1)
06:26	21 CALDWELL S foul drawn (1)			15 DAUGHERTY C foul shooting (1 - 2)
06:26	21 CALDWELL S free throw 1 - 2 made (1)	3-0	3	
06:25	21 CALDWELL S free throw 2 - 2 missed			
06:24	24 SANDERS B offensive rebound (1)			
06:16	0 HANSON T 2pt FG second chance in the paint, driving layup made (2)	5-0	5	
05:59	0 HANSON T steal (1)			10 GRAVES L turnover bad pass (2)
05:52	0 HANSON T 2pt FG from turnover in the paint, driving layup missed			
05:49				10 GRAVES L defensive rebound (4)
05:39				10 GRAVES L 2pt FG in the paint, pull up jump shot missed



Southern Utah at Arizona St.

02/08/21 Desert Financial Arena, Tempe
2020-21 Women's Basketball

Officials: Melissa Barlow, Julie Krommenhoek, Kaili Kimura

Game Time	ASU	Score	Diff	SUU
05:36	22 WALKER E defensive rebound (1)			
05:32	3 BOSQUEZ G 2pt FG outside the paint, jump shot missed			
05:30	offensive rebound (6)			
05:30	0 HANSON T substitution out			
05:30	11 ERIKSTRUP S substitution in			
05:30				10 GRAVES L substitution out
05:30				23 BARRINGTON K substitution in
05:24	21 CALDWELL S 2pt FG second chance in the paint, driving layup missed			
05:21				40 FRANSEN D defensive rebound (2)
05:04	22 WALKER E steal (2)			23 BARRINGTON K turnover bad pass (1)
04:40	11 ERIKSTRUP S 3pt FG from turnover, jump shot made (3)	8-0	8	
04:40	22 WALKER E assist (1)			
04:22		8-3	5	15 DAUGHERTY C 3pt FG , jump shot made (3)
04:00	22 WALKER E foul offensive (1 - 1)			2 SATINI M foul drawn (1)
04:00	22 WALKER E turnover offensive (1)			
04:00	Timeout media			
04:00	3 BOSQUEZ G substitution out			
04:00	21 CALDWELL S substitution out			
04:00	22 WALKER E substitution out			
04:00	24 SANDERS B substitution out			
04:00	2 SIMMONS J substitution in			
04:00	5 LOERA J substitution in			
04:00	13 BESSELINK M substitution in			
04:00	20 LEVINGS K substitution in			
03:46				40 FRANSEN D 2pt FG from turnover in the paint, turnaround jump shot missed
03:44	defensive rebound (7)			
03:24	20 LEVINGS K turnover 3 seconds (1)			
03:24	20 LEVINGS K substitution out			
03:24	43 GREENSLADE I substitution in			
03:06	2 SIMMONS J foul shooting (1 - 2)			15 DAUGHERTY C foul drawn (1)
03:06	11 ERIKSTRUP S substitution out			
03:06	0 HANSON T substitution in			
03:06		8-4	4	15 DAUGHERTY C free throw 1 - 2 made (4)
03:06		8-5	3	15 DAUGHERTY C free throw 2 - 2 made (5)
02:43	2 SIMMONS J foul drawn (1)			40 FRANSEN D foul shooting (1 - 3)
02:43				2 SATINI M substitution out
02:43				24 BALLENA D substitution in
02:43	2 SIMMONS J free throw 1 - 2 made (1)	9-5	4	
02:43	2 SIMMONS J free throw 2 - 2 made (2)	10-5	5	
02:16		10-8	2	21 EATON M 3pt FG , jump shot made (3)
02:16				24 BALLENA D assist (1)
01:53	13 BESSELINK M 2pt FG in the paint, layup blocked			
01:53				40 FRANSEN D block (1)
01:47				15 DAUGHERTY C defensive rebound (1)
01:42	0 HANSON T steal (2)			15 DAUGHERTY C turnover lost ball (2)
01:37	0 HANSON T 2pt FG from turnover in the paint, layup missed			
01:34	13 BESSELINK M offensive rebound (2)			



Southern Utah at Arizona St.

02/08/21 Desert Financial Arena, Tempe
2020-21 Women's Basketball

Officials: Melissa Barlow, Julie Krommenhoek, Kaili Kimura

Game Time	ASU	Score	Diff	SUU
01:22	5 LOERA J 3pt FG from turnover second chance , jump shot missed			
01:18				15 DAUGHERTY C defensive rebound (2)
01:11				40 FRANSEN D 3pt FG , jump shot missed
01:07	5 LOERA J defensive rebound (1)			
01:05	jump ball situation			
01:05	2 SIMMONS J substitution out			
01:05	5 LOERA J substitution out			
01:05	13 BESSELINK M substitution out			
01:05	43 GREENSLADE I substitution out			
01:05	3 BOSQUEZ G substitution in			
01:05	20 LEVINGS K substitution in			
01:05	21 CALDWELL S substitution in			
01:05	22 WALKER E substitution in			
01:05				15 DAUGHERTY C substitution out
01:05				40 FRANSEN D substitution out
01:05				2 SATINI M substitution in
01:05				14 THORNBERRY P substitution in
00:59	21 CALDWELL S 2pt FG in the paint, driving layup blocked			
00:59				14 THORNBERRY P block (1)
00:52				23 BARRINGTON K defensive rebound (1)
00:44	0 HANSON T steal (3)			14 THORNBERRY P turnover bad pass (1)
00:17	0 HANSON T foul drawn (1)			23 BARRINGTON K foul shooting (1 - 4)
00:17				23 BARRINGTON K substitution out
00:17				11 KAMPS M substitution in
00:17	0 HANSON T free throw 1 - 2 made (3)	11-8	3	
00:17	0 HANSON T free throw 2 - 2 made (4)	12-8	4	
00:17	21 CALDWELL S substitution out			
00:17	2 SIMMONS J substitution in			
00:02				24 BALLENA D turnover bad pass (1)
END OF PERIOD				
ASU 12-8 SUU				



Southern Utah at Arizona St.

02/08/21 Desert Financial Arena, Tempe
2020-21 Women's Basketball

Officials: Melissa Barlow, Julie Krommenhoek, Kaili Kimura

Southern Utah - 8

NO.	Name	F	Min	FG			Rebounds			Fouls		TP	AS	TO	ST	Blocks		+/-
				M-A	M-A	M-A	OR	DR	TOT	PF	FD					BS	BA	
40	Darri Frandsen	F	08:55	0-3	0-1	0-0	0	2	2	1	0	0	0	1	0	1	0	-2
2	Margarita Satini	G	08:22	0-1	0-1	0-0	0	1	1	0	1	0	0	0	0	0	0	-5
10	Liz Graves	G	04:30	0-2	0-0	0-0	1	3	4	1	0	0	0	2	0	0	0	-5
15	Cherita Daugherty	G	08:55	1-1	1-1	2-2	0	2	2	1	1	5	0	2	0	0	0	-2
21	Madelyn Eaton	G	10:00	1-1	1-1	0-0	0	0	0	0	0	3	0	0	0	0	0	-4
23	Kinsley Barrington		05:12	0-0	0-0	0-0	0	1	1	1	0	0	0	1	0	0	0	3
24	Daylani Ballena		02:43	0-0	0-0	0-0	0	0	0	0	0	0	1	1	0	0	0	-1
14	Pyper Thornberry		01:05	0-0	0-0	0-0	0	0	0	0	0	0	0	1	0	1	0	-2
11	Megan Kamps		00:18	0-0	0-0	0-0	0	0	0	0	0	0	0	0	0	0	0	-2
Team							0	0	0			0						
Totals				2-8	2-4	2-2	1	9	10	4	2	8	1	8	0	2	0	-4

Shooting By Period		
1st FG%	2-8	25.0%
3PT%	2-4	50.0%
FT%	2-2	100%
GM FG%	2-8	25.0%
3PT%	2-4	50.0%
FT%	2-2	100.0%

Dead Ball Rebounds: 0, 0

Technical Fouls::NONE

Arizona St. - 12

NO.	Name	F	Min	FG			Rebounds			Fouls		TP	AS	TO	ST	Blocks		+/-
				M-A	M-A	M-A	OR	DR	TOT	PF	FD					BS	BA	
13	Maggie Besselink	F	05:45	1-4	0-0	0-0	2	0	2	0	0	2	0	0	0	0	1	-1
20	Katelyn Levings	F	04:31	0-1	0-1	0-0	0	0	0	0	1	0	0	1	0	0	0	4
0	Taya Hanson	G	07:36	1-4	0-0	2-2	0	1	1	0	1	4	0	0	3	0	0	4
2	Jaddan Simmons	G	06:03	0-1	0-0	2-2	0	1	1	1	1	2	0	0	0	0	0	-1
5	Jamie Loera	G	05:45	0-1	0-1	0-0	0	1	1	0	0	0	0	0	0	0	0	-1
3	Gabriela Bosquez		04:15	0-1	0-0	0-0	0	0	0	0	0	0	0	0	0	0	0	5
21	Sydnei Caldwell		03:57	0-2	0-0	1-2	0	0	0	0	1	1	0	0	0	0	1	5
22	Eboni Walker		04:15	0-0	0-0	0-0	0	1	1	1	0	0	1	1	2	0	0	5
24	Bre'yanna Sanders		03:10	0-0	0-0	0-0	1	0	1	0	0	0	0	0	0	0	0	3
11	Sydney Erikstrup		02:24	1-1	1-1	0-0	0	0	0	0	0	3	0	0	0	0	0	0
43	Imogen Greenslade		02:19	0-0	0-0	0-0	0	0	0	0	0	0	0	0	0	0	0	-3
Team							1	1	2			0						
Totals				3-15	1-3	5-6	4	5	9	2	4	12	1	2	5	0	2	4

Shooting By Period		
1st FG%	3-15	20.0%
3PT%	1-3	33.3%
FT%	5-6	83.3%
GM FG%	3-15	20.0%
3PT%	1-3	33.3%
FT%	5-6	83.3%

Dead Ball Rebounds: 0, 0

Technical Fouls::NONE

	SUU	ASU
Biggest lead	0 (1st 10:00)	8 (1st 4:40)
Best Scoring Run	5(1st 3:06)	8(1st 4:40)
Lead Changes	0	
Times Tied	0	
Time with Lead	00:00	07:53

Points from	SUU	ASU
Turnovers	2	6
Paint	0	4
Second Chance	0	4
Fast Breaks	0	0
Bench	0	4

	Period by Period Scoring				
	1st	2nd	3rd	4th	TOT
SUU	8	9	13	14	44
ASU	12	12	12	19	55



Southern Utah at Arizona St.

02/08/21 Desert Financial Arena, Tempe
2020-21 Women's Basketball

Officials: Melissa Barlow, Julie Krommenhoek, Kaili Kimura

Period 2

Quarter Starters:

ASU	0 Hanson T	2 Simmons J	3 Bosquez G	13 Besselink M	20 Levings K
SUU	2 Satini M	11 Kamps M	14 Thornberry P	21 Eaton M	24 Ballena D

Game Time	ASU	Score	Diff	SUU
10:00	22 WALKER E substitution out			
10:00	13 BESSELINK M substitution in			
09:47				2 SATINI M turnover lost ball (1)
09:25	20 LEVINGS K 3pt FG from turnover, jump shot missed			
09:22				21 EATON M defensive rebound (1)
08:54		12-10	2	11 KAMPS M 2pt FG in the paint, layup made (2)
08:54				21 EATON M assist (1)
08:41	2 SIMMONS J 2pt FG in the paint, driving layup made (4)	14-10	4	
08:26	2 SIMMONS J steal (1)			2 SATINI M turnover lost ball (2)
08:21	0 HANSON T substitution out			
08:21	3 BOSQUEZ G substitution out			
08:21	20 LEVINGS K substitution out			
08:21	11 ERIKSTRUP S substitution in			
08:21	21 CALDWELL S substitution in			
08:21	24 SANDERS B substitution in			
08:21				2 SATINI M substitution out
08:21				11 KAMPS M substitution out
08:21				14 THORNBERRY P substitution out
08:21				10 GRAVES L substitution in
08:21				15 DAUGHERTY C substitution in
08:21				40 FRANSEN D substitution in
08:11	13 BESSELINK M foul offensive (1 - 1)			15 DAUGHERTY C foul drawn (2)
08:11	13 BESSELINK M turnover offensive (1)			
07:55		14-12	2	40 FRANSEN D 2pt FG from turnover in the paint, driving layup made (2)
07:55	13 BESSELINK M foul shooting (2 - 2)			40 FRANSEN D foul drawn (1)
07:55	13 BESSELINK M substitution out			
07:55	22 WALKER E substitution in			
07:55		14-13	1	40 FRANSEN D free throw 1 - 1 made (3)
07:24	2 SIMMONS J 2pt FG in the paint, driving layup made (6)	16-13	3	
07:18	11 ERIKSTRUP S substitution out			
07:18	5 LOERA J substitution in			
07:18	21 CALDWELL S substitution out			
07:18	11 ERIKSTRUP S substitution in			
06:55				10 GRAVES L 2pt FG in the paint, driving layup missed
06:53	11 ERIKSTRUP S defensive rebound (1)			
06:48	22 WALKER E 2pt FG fast break in the paint, layup made (2)	18-13	5	
06:48	5 LOERA J assist (1)			
06:42	11 ERIKSTRUP S foul personal (1 - 3)			15 DAUGHERTY C foul drawn (3)
06:42	2 SIMMONS J substitution out			
06:42	21 CALDWELL S substitution in			
06:27	24 SANDERS B foul personal (1 - 4)			10 GRAVES L foul drawn (1)
06:27	11 ERIKSTRUP S substitution out			



Southern Utah at Arizona St.

02/08/21 Desert Financial Arena, Tempe
2020-21 Women's Basketball

Officials: Melissa Barlow, Julie Krommenhoek, Kaili Kimura

Game Time	ASU	Score	Diff	SUU
06:27	0 HANSON T substitution in			
06:12		18-15	3	40 FRANSEN D 2pt FG in the paint, layup made (5)
06:12				24 BALLENA D assist (2)
05:44	21 CALDWELL S 3pt FG , jump shot missed			
05:41	0 HANSON T offensive rebound (2)			
05:25	22 WALKER E 2pt FG second chance outside the paint, jump shot missed			
05:22	offensive rebound (12)			
05:22	24 SANDERS B foul drawn (1)			10 GRAVES L foul loose ball (2 - 1)
05:22	22 WALKER E substitution out			
05:22	20 LEVINGS K substitution in			
05:22				10 GRAVES L substitution out
05:22				11 KAMPS M substitution in
05:21	20 LEVINGS K foul drawn (2)			11 KAMPS M foul personal (1 - 2)
05:20	0 HANSON T 2pt FG second chance outside the paint, jump shot missed			
05:16				15 DAUGHERTY C defensive rebound (3)
05:12	20 LEVINGS K foul shooting (1 - 5)			40 FRANSEN D foul drawn (2)
05:12	5 LOERA J substitution out			
05:12	21 CALDWELL S substitution out			
05:12	24 SANDERS B substitution out			
05:12	2 SIMMONS J substitution in			
05:12	3 BOSQUEZ G substitution in			
05:12	22 WALKER E substitution in			
05:12				40 FRANSEN D free throw fast break 1 - 2 missed
05:12				offensive dead ball rebound (1)
05:12				40 FRANSEN D free throw fast break 2 - 2 missed
05:12	22 WALKER E defensive rebound (2)			
04:51	22 WALKER E 2pt FG in the paint, layup missed			
04:48				24 BALLENA D defensive rebound (1)
04:27	Timeout media			
04:27				21 EATON M substitution out
04:27				2 SATINI M substitution in
04:21				24 BALLENA D 2pt FG outside the paint, jump shot missed
04:18	22 WALKER E defensive rebound (3)			
04:06	2 SIMMONS J foul drawn (2)			40 FRANSEN D foul shooting (2 - 3)
04:06	20 LEVINGS K substitution out			
04:06	43 GREENSLADE I substitution in			
04:06				40 FRANSEN D substitution out
04:06				14 THORNBERRY P substitution in
04:06	2 SIMMONS J free throw 1 - 2 made (7)	19-15	4	
04:06	2 SIMMONS J free throw 2 - 2 made (8)	20-15	5	
03:46				15 DAUGHERTY C 2pt FG in the paint, driving layup missed
03:43	2 SIMMONS J defensive rebound (2)			
03:42	2 SIMMONS J substitution out			
03:42	21 CALDWELL S substitution in			
03:22	0 HANSON T foul drawn (2)			24 BALLENA D foul shooting (1 - 4)
03:21				2 SATINI M substitution out
03:21				21 EATON M substitution in
03:21	0 HANSON T free throw 1 - 3 missed			



Southern Utah at Arizona St.

02/08/21 Desert Financial Arena, Tempe
2020-21 Women's Basketball

Officials: Melissa Barlow, Julie Krommenhoek, Kaili Kimura

Game Time	ASU	Score	Diff	SUU
03:21	offensive dead ball rebound (1)			
03:21	0 HANSON T free throw 2 - 3 made (5)	21-15	6	
03:21	0 HANSON T free throw 3 - 3 made (6)	22-15	7	
03:21	3 BOSQUEZ G substitution out			
03:21	22 WALKER E substitution out			
03:21	5 LOERA J substitution in			
03:21	24 SANDERS B substitution in			
02:58		22-17	5	11 KAMPS M 2pt FG in the paint, layup made (4)
02:58				24 BALLENA D assist (3)
02:30	24 SANDERS B turnover bad pass (1)			14 THORNBERRY P steal (1)
02:09				14 THORNBERRY P 2pt FG from turnover outside the paint, jump shot missed
02:06	21 CALDWELL S defensive rebound (1)			
01:40	0 HANSON T 2pt FG in the paint, layup blocked			
01:40				21 EATON M block (1)
01:35				11 KAMPS M defensive rebound (1)
01:17				15 DAUGHERTY C 2pt FG in the paint, driving layup missed
01:15	0 HANSON T defensive rebound (3)			
00:50	21 CALDWELL S 2pt FG in the paint, driving layup missed			
00:47	21 CALDWELL S offensive rebound (2)			
00:44	21 CALDWELL S 2pt FG second chance outside the paint, turnaround jump shot made (3)	24-17	7	
00:16				15 DAUGHERTY C 3pt FG , jump shot missed
00:12				offensive rebound (15)
00:12	0 HANSON T substitution out			
00:12	21 CALDWELL S substitution out			
00:12	24 SANDERS B substitution out			
00:12	43 GREENSLADE I substitution out			
00:12	2 SIMMONS J substitution in			
00:12	11 ERIKSTRUP S substitution in			
00:12	20 LEVINGS K substitution in			
00:12	22 WALKER E substitution in			
00:12				14 THORNBERRY P substitution out
00:12				23 BARRINGTON K substitution in
00:08				24 BALLENA D 3pt FG second chance, jump shot missed
00:04				23 BARRINGTON K offensive rebound (2)
END OF PERIOD				
ASU 24-17 SUU				



Southern Utah at Arizona St.

02/08/21 Desert Financial Arena, Tempe
2020-21 Women's Basketball

Officials: Melissa Barlow, Julie Krommenhoek, Kaili Kimura

Southern Utah - 9

NO.	Name	F/G	Rebounds			Fouls		TP	AS	TO	ST	Blocks		+/-				
			M-A	3P	FT	OR	DR					TOT	PF		FD	BS	BA	
40	Darri Frandsen	F	04:15	2-2	0-0	1-3	0	0	0	1	2	5	0	0	0	0	1	
2	Margarita Satini	G	02:45	0-0	0-0	0-0	0	0	0	0	0	0	0	2	0	0	-2	
10	Liz Graves	G	02:59	0-1	0-0	0-0	0	0	0	1	1	0	0	0	0	0	1	
15	Cherita Daugherty	G	08:21	0-3	0-1	0-0	0	1	1	0	2	0	0	0	0	0	-3	
21	Madelyn Eaton	G	08:54	0-0	0-0	0-0	0	1	1	0	0	0	1	0	0	1	-1	
24	Daylani Ballena		10:00	0-2	0-1	0-0	0	1	1	1	0	0	2	0	0	0	-3	
11	Megan Kamps		07:01	2-2	0-0	0-0	0	1	1	1	0	4	0	0	0	0	-4	
14	Pyper Thornberry		05:32	0-1	0-0	0-0	0	0	0	0	0	0	0	0	1	0	-4	
23	Kinsley Barrington		00:13	0-0	0-0	0-0	1	0	1	0	0	0	0	0	0	0	0	
Team							1	0	1			0		0				
Totals				4-11	0-2	1-3	2	4	6	4	5	9	3	2	1	1	0	-3

Shooting By Period		
2nd FG%	4-11	36.4%
3PT%	0-2	0.0%
FT%	1-3	33.3%
GM FG%	4-11	36.4%
3PT%	0-2	0.0%
FT%	1-3	33.3%

Dead Ball Rebounds: 1, 0

Technical Fouls::NONE

Arizona St. - 12

NO.	Name	F/G	Rebounds			Fouls		TP	AS	TO	ST	Blocks		+/-				
			M-A	3P	FT	OR	DR					TOT	PF		FD	BS	BA	
13	Maggie Besselink	F	02:05	0-0	0-0	0-0	0	0	0	2	0	0	0	1	0	0	-2	
20	Katelyn Levings	F	03:08	0-1	0-1	0-0	0	0	0	1	1	0	0	0	0	0	0	
0	Taya Hanson	G	07:53	0-2	0-0	2-3	1	1	2	0	1	2	0	0	0	0	2	
2	Jaddan Simmons	G	05:01	2-2	0-0	2-2	0	1	1	0	1	6	0	0	1	0	3	
5	Jamie Loera	G	05:27	0-0	0-0	0-0	0	0	0	0	0	0	1	0	0	0	0	
11	Sydney Erikstrup		02:07	0-0	0-0	0-0	0	1	1	1	0	0	0	0	0	0	1	
21	Sydnei Caldwell		06:02	1-3	0-1	0-0	1	1	2	0	0	2	0	0	0	0	-1	
24	Bre'yanna Sanders		06:17	0-0	0-0	0-0	0	0	0	1	1	0	0	1	0	0	-1	
22	Eboni Walker		04:37	1-3	0-0	0-0	0	2	2	0	0	2	0	0	0	0	5	
3	Gabriela Bosquez		03:30	0-0	0-0	0-0	0	0	0	0	0	0	0	0	0	0	4	
43	Imogen Greenslade		03:53	0-0	0-0	0-0	0	0	0	0	0	0	0	0	0	0	4	
Team							1	0	1			0		0				
Totals				4-11	0-2	4-5	3	6	9	5	4	12	1	2	1	0	1	3

Shooting By Period		
2nd FG%	4-11	36.4%
3PT%	0-2	0.0%
FT%	4-5	80%
GM FG%	4-11	36.4%
3PT%	0-2	0.0%
FT%	4-5	80.0%

Dead Ball Rebounds: 1, 0

Technical Fouls::NONE

	SUU	ASU
Biggest lead	0 (1 st 10:00)	7 (2 nd 3:21)
Best Scoring Run	3(2 nd 7:55)	4(2 nd 6:48)
Lead Changes	0	
Times Tied	0	
Time with Lead	00:00	09:25

Points from	SUU	ASU
Turnovers	3	0
Paint	8	6
Second Chance	0	2
Fast Breaks	0	2
Bench	4	4

	Period by Period Scoring				
	1st	2nd	3rd	4th	TOT
SUU	8	9	13	14	44
ASU	12	12	12	19	55



Officials: Melissa Barlow, Julie Krommenhoek, Kaili Kimura

Southern Utah - 17

NO.	Name	F/G	Min	FG			Rebounds			Fouls		TP	AS	TO	ST	Blocks		+/-
				M-A	M-A	M-A	OR	DR	TOT	PF	FD					BS	BA	
40	Darri Frandsen	F	13:10	2-5	0-1	1-3	0	2	2	2	2	5	0	1	0	1	0	-1
2	Margarita Satini	G	11:07	0-1	0-1	0-0	0	1	1	0	1	0	0	2	0	0	0	-7
10	Liz Graves	G	07:29	0-3	0-0	0-0	1	3	4	2	1	0	0	2	0	0	0	-4
15	Cherita Daugherty	G	17:16	1-4	1-2	2-2	0	3	3	1	3	5	0	2	0	0	0	-5
21	Madelyn Eaton	G	18:54	1-1	1-1	0-0	0	1	1	0	0	3	1	0	0	1	0	-5
23	Kinsley Barrington		05:25	0-0	0-0	0-0	1	1	2	1	0	0	0	1	0	0	0	3
24	Daylani Ballena		12:43	0-2	0-1	0-0	0	1	1	1	0	0	3	1	0	0	0	-4
14	Pyper Thornberry		06:37	0-1	0-0	0-0	0	0	0	0	0	0	0	1	1	1	0	-6
11	Megan Kamps		07:19	2-2	0-0	0-0	0	1	1	1	0	4	0	0	0	0	0	-6
Team							1	0	1			0		0				
Totals				6-19	2-6	3-5	3	13	16	8	7	17	4	10	1	3	0	-7

Shooting By Period		
1 st FG%	2-8	25.0%
3PT%	2-4	50.0%
FT%	2-2	100%
2 nd FG%	4-11	36.4%
3PT%	0-2	0.0%
FT%	1-3	33.3%
GM FG%	6-19	31.6%
3PT%	2-6	33.3%
FT%	3-5	60.0%

Dead Ball Rebounds: 1, 0

Technical Fouls::NONE

Arizona St. - 24

NO.	Name	F/G	Min	FG			Rebounds			Fouls		TP	AS	TO	ST	Blocks		+/-
				M-A	M-A	M-A	OR	DR	TOT	PF	FD					BS	BA	
13	Maggie Besselink	F	07:50	1-4	0-0	0-0	2	0	2	2	0	2	0	1	0	0	1	-3
20	Katelyn Levings	F	07:39	0-2	0-2	0-0	0	0	0	1	2	0	0	1	0	0	0	4
0	Taya Hanson	G	15:29	1-6	0-0	4-5	1	2	3	0	2	6	0	0	3	0	1	6
2	Jaddan Simmons	G	11:04	2-3	0-0	4-4	0	2	2	1	2	8	0	0	1	0	0	2
5	Jamie Loera	G	11:12	0-1	0-1	0-0	0	1	1	0	0	0	1	0	0	0	0	-1
3	Gabriela Bosquez		07:45	0-1	0-0	0-0	0	0	0	0	0	0	0	0	0	0	0	9
21	Sydnei Caldwell		09:59	1-5	0-1	1-2	1	1	2	0	1	3	0	0	0	0	1	4
22	Eboni Walker		08:52	1-3	0-0	0-0	0	3	3	1	0	2	1	1	2	0	0	10
24	Bre'yanna Sanders		09:27	0-0	0-0	0-0	1	0	1	1	1	0	0	1	0	0	0	2
11	Sydney Erikstrup		04:31	1-1	1-1	0-0	0	1	1	1	0	3	0	0	0	0	0	1
43	Imogen Greenslade		06:12	0-0	0-0	0-0	0	0	0	0	0	0	0	0	0	0	0	1
Team							2	1	3			0		0				
Totals				7-26	1-5	9-11	7	11	18	7	8	24	2	4	6	0	3	7

Shooting By Period		
1 st FG%	3-15	20.0%
3PT%	1-3	33.3%
FT%	5-6	83.3%
2 nd FG%	4-11	36.4%
3PT%	0-2	0.0%
FT%	4-5	80%
GM FG%	7-26	26.9%
3PT%	1-5	20.0%
FT%	9-11	81.8%

Dead Ball Rebounds: 1, 0

Technical Fouls::NONE

	SUU	ASU
Biggest lead	0 (1 st 10:00)	8 (1 st 4:40)
Best Scoring Run	5(1 st 3:06)	8(1 st 4:40)
Lead Changes	0	
Times Tied	0	
Time with Lead	00:00	17:53

Points from	SUU	ASU
Turnovers	5	6
Paint	8	10
Second Chance	0	6
Fast Breaks	0	2
Bench	4	8

	Period by Period Scoring				
	1st	2nd	3rd	4th	TOT
SUU	8	9	13	14	44
ASU	12	12	12	19	55



Southern Utah at Arizona St.

02/08/21 Desert Financial Arena, Tempe
2020-21 Women's Basketball

Officials: Melissa Barlow, Julie Krommenhoek, Kaili Kimura

Period 3

Quarter Starters:

ASU	0 Hanson T	2 Simmons J	5 Loera J	13 Besselink M	20 Levings K
SUU	2 Satini M	10 Graves L	15 Daugherty C	21 Eaton M	40 Frandsen D

Game Time	ASU	Score	Diff	SUU
10:00	11 ERIKSTRUP S substitution out			
10:00	22 WALKER E substitution out			
10:00	0 HANSON T substitution in			
10:00	13 BESSELINK M substitution in			
10:00				11 KAMPS M substitution out
10:00				23 BARRINGTON K substitution out
10:00				24 BALLENA D substitution out
10:00				2 SATINI M substitution in
10:00				10 GRAVES L substitution in
10:00				40 FRANSEN D substitution in
09:48	0 HANSON T 3pt FG , jump shot missed			
09:43	20 LEVINGS K offensive rebound (1)			
09:21	2 SIMMONS J turnover bad pass (1)			
08:55				15 DAUGHERTY C 2pt FG from turnover in the paint, layup missed
08:50	5 LOERA J defensive rebound (2)			
08:47	13 BESSELINK M 2pt FG in the paint, driving layup missed			
08:42	2 SIMMONS J offensive rebound (3)			
08:25	turnover shot clock (6)			
08:05	0 HANSON T steal (4)			2 SATINI M turnover bad pass (3)
08:05	13 BESSELINK M 2pt FG from turnover in the paint, driving layup missed			
08:05				15 DAUGHERTY C defensive rebound (4)
08:05				15 DAUGHERTY C 3pt FG , jump shot missed
08:05				21 EATON M offensive rebound (2)
08:05		24-19	5	21 EATON M 2pt FG second chance in the paint, jump shot made (5)
07:56	5 LOERA J 3pt FG , jump shot missed			
07:40				15 DAUGHERTY C defensive rebound (5)
07:37	13 BESSELINK M steal (1)			15 DAUGHERTY C turnover bad pass (3)
07:15	5 LOERA J 2pt FG from turnover in the paint, pull up jump shot made (2)	26-19	7	
07:03	20 LEVINGS K steal (1)			2 SATINI M turnover bad pass (4)
06:53	0 HANSON T substitution out			
06:53	5 LOERA J substitution out			
06:53	13 BESSELINK M substitution out			
06:53	20 LEVINGS K substitution out			
06:53	3 BOSQUEZ G substitution in			
06:53	11 ERIKSTRUP S substitution in			
06:53	22 WALKER E substitution in			
06:53	24 SANDERS B substitution in			
06:53				2 SATINI M substitution out
06:53				10 GRAVES L substitution out
06:53				23 BARRINGTON K substitution in



Southern Utah at Arizona St.

02/08/21 Desert Financial Arena, Tempe
2020-21 Women's Basketball

Officials: Melissa Barlow, Julie Krommenhoek, Kaili Kimura

Game Time	ASU	Score	Diff	SUU
06:53				24 BALLENA D substitution in
06:53	2 SIMMONS J foul drawn (3)			15 DAUGHERTY C foul shooting (2 - 1)
06:53	2 SIMMONS J free throw 1 - 2 made (9)	27-19	8	
06:53	2 SIMMONS J free throw 2 - 2 missed			
06:53	24 SANDERS B offensive rebound (2)			
06:44	2 SIMMONS J 2pt FG second chance outside the paint, jump shot missed			
06:39				24 BALLENA D defensive rebound (2)
06:34		27-21	6	40 FRANSEN D 2pt FG fast break in the paint, layup made (7)
06:34				24 BALLENA D assist (4)
06:21	2 SIMMONS J substitution out			
06:21	21 CALDWELL S substitution in			
06:21	11 ERIKSTRUP S foul shooting (2 - 1)			40 FRANSEN D foul drawn (3)
06:21		27-22	5	40 FRANSEN D free throw fast break 1 - 1 made (8)
06:19	21 CALDWELL S turnover dribbling violation (1)			
05:41	Timeout 30 Sec			
05:41	3 BOSQUEZ G substitution out			
05:41	11 ERIKSTRUP S substitution out			
05:41	21 CALDWELL S substitution out			
05:41	22 WALKER E substitution out			
05:41	24 SANDERS B substitution out			
05:41	0 HANSON T substitution in			
05:41	2 SIMMONS J substitution in			
05:41	5 LOERA J substitution in			
05:41	13 BESSELINK M substitution in			
05:41	20 LEVINGS K substitution in			
05:41	5 LOERA J foul personal (1 - 2)			24 BALLENA D foul drawn (1)
05:28	0 HANSON T steal (5)			24 BALLENA D turnover bad pass (2)
05:28	0 HANSON T foul drawn (3)			21 EATON M foul personal (1 - 2)
05:05	5 LOERA J turnover bad pass (1)			
04:57	0 HANSON T foul drawn (4)			15 DAUGHERTY C foul offensive (3 - 3)
04:57				15 DAUGHERTY C turnover offensive (4)
04:57	Timeout media			
04:57	5 LOERA J substitution out			
04:57	3 BOSQUEZ G substitution in			
04:57				15 DAUGHERTY C substitution out
04:57				34 JOHNSTON S substitution in
04:47	20 LEVINGS K foul drawn (3)			40 FRANSEN D foul personal (3 - 4)
04:47				40 FRANSEN D substitution out
04:47				11 KAMPS M substitution in
04:45	0 HANSON T 3pt FG from turnover, jump shot made (9)	30-22	8	
04:45	2 SIMMONS J assist (1)			
04:20				34 JOHNSTON S 3pt FG , jump shot missed
04:16				21 EATON M offensive rebound (3)
04:08	20 LEVINGS K steal (2)			11 KAMPS M turnover bad pass (1)
04:02	20 LEVINGS K foul drawn (4)			23 BARRINGTON K foul personal (2 - 5)
04:02	20 LEVINGS K free throw 1 - 2 missed			
04:02	offensive dead ball rebound (2)			
04:02	20 LEVINGS K free throw 2 - 2 made (1)	31-22	9	



Southern Utah at Arizona St.

02/08/21 Desert Financial Arena, Tempe
2020-21 Women's Basketball

Officials: Melissa Barlow, Julie Krommenhoek, Kaili Kimura

Game Time	ASU	Score	Diff	SUU
03:45		31-24	7	23 BARRINGTON K 2pt FG in the paint, layup made (2)
03:45				34 JOHNSTON S assist (1)
03:33	0 HANSON T 3pt FG , jump shot missed			
03:30	20 LEVINGS K offensive rebound (2)			
03:19	2 SIMMONS J 2pt FG second chance in the paint, pull up jump shot made (11)	33-24	9	
03:05	3 BOSQUEZ G foul personal (1 - 3)			21 EATON M foul drawn (1)
03:05	3 BOSQUEZ G substitution out			
03:05	13 BESSELINK M substitution out			
03:05	21 CALDWELL S substitution in			
03:05	22 WALKER E substitution in			
02:50				11 KAMPS M 2pt FG in the paint, layup missed
02:47	20 LEVINGS K defensive rebound (3)			
02:22	0 HANSON T 3pt FG , step back jump shot made (12)	36-24	12	
02:05				23 BARRINGTON K 3pt FG , jump shot missed
02:04				offensive rebound (22)
02:04	20 LEVINGS K foul loose ball (2 - 4)			11 KAMPS M foul drawn (1)
02:04	2 SIMMONS J substitution out			
02:04	20 LEVINGS K substitution out			
02:04	5 LOERA J substitution in			
02:04	13 BESSELINK M substitution in			
02:04				23 BARRINGTON K substitution out
02:04				24 BALLENA D substitution out
02:04				10 GRAVES L substitution in
02:04				15 DAUGHERTY C substitution in
02:04	5 LOERA J foul personal (2 - 5)			10 GRAVES L foul drawn (2)
02:04		36-25	11	10 GRAVES L free throw 1 - 2 made (1)
02:04				10 GRAVES L free throw 2 - 2 missed
02:03				21 EATON M offensive rebound (4)
01:49				21 EATON M 2pt FG second chance in the paint, driving layup missed
01:46	0 HANSON T defensive rebound (4)			
01:42	21 CALDWELL S 2pt FG outside the paint, jump shot missed			
01:37	22 WALKER E offensive rebound (4)			
01:37	22 WALKER E 2pt FG second chance in the paint, layup missed			
01:36	22 WALKER E offensive rebound (5)			
01:28	22 WALKER E turnover bad pass (2)			11 KAMPS M steal (1)
01:20		36-28	8	34 JOHNSTON S 3pt FG fast break from turnover, jump shot made (3)
01:20				21 EATON M assist (2)
00:56	13 BESSELINK M turnover bad pass (2)			
00:56	0 HANSON T substitution out			
00:56	5 LOERA J substitution out			
00:56	13 BESSELINK M substitution out			
00:56	22 WALKER E substitution out			
00:56	2 SIMMONS J substitution in			
00:56	11 ERIKSTRUP S substitution in			
00:56	20 LEVINGS K substitution in			
00:56	24 SANDERS B substitution in			
00:56				11 KAMPS M substitution out



Southern Utah at Arizona St.

02/08/21 Desert Financial Arena, Tempe
2020-21 Women's Basketball

Officials: Melissa Barlow, Julie Krommenhoek, Kaili Kimura

Game Time	ASU	Score	Diff	SUU
00:56				32 BLACK R substitution in
00:30	21 CALDWELL S foul personal (1 - 6)			21 EATON M foul drawn (2)
00:30		36-29	7	21 EATON M free throw 1 - 2 made (6)
00:30		36-30	6	21 EATON M free throw 2 - 2 made (7)
00:30	21 CALDWELL S substitution out			
00:30	0 HANSON T substitution in			
00:30				34 JOHNSTON S substitution out
00:30				24 BALLENA D substitution in
00:05	20 LEVINGS K 2pt FG outside the paint, jump shot missed			
00:01				21 EATON M defensive rebound (5)
END OF PERIOD				
ASU 36-30 SUU				



Southern Utah at Arizona St.

02/08/21 Desert Financial Arena, Tempe
2020-21 Women's Basketball

Officials: Melissa Barlow, Julie Krommenhoek, Kaili Kimura

Southern Utah - 13

NO.	Name	Min	FG		3P		FT			Rebounds			Fouls		TP	AS	TO	ST	Blocks		+/-	
			M-A	M-A	M-A	M-A	OR	DR	TOT	PF	FD	BS	BA									
40	Darri Frandsen	F 05:13	1-1	0-0	1-1	0	0	0	1	1	3	0	0	0	0	0	0	0	0	0	0	2
2	Margarita Satini	G 03:07	0-0	0-0	0-0	0	0	0	0	0	0	0	2	0	0	0	0	0	0	0	0	0
10	Liz Graves	G 05:11	0-0	0-0	1-2	0	0	0	0	1	1	0	0	0	0	0	0	0	0	0	0	6
15	Cherita Daugherty	G 07:07	0-2	0-1	0-0	0	2	2	2	0	0	0	2	0	0	2	0	0	0	0	0	8
21	Madelyn Eaton	G 10:00	1-2	0-0	2-2	3	1	4	1	2	4	1	0	0	0	0	0	0	0	0	0	1
23	Kinsley Barrington	04:49	1-2	0-1	0-0	0	0	0	1	0	2	0	0	0	0	0	0	0	0	0	0	-5
24	Daylani Ballena	05:20	0-0	0-0	0-0	0	1	1	0	1	0	1	1	0	0	0	0	0	0	0	0	-5
34	Samantha Johnston	04:26	1-2	1-2	0-0	0	0	0	0	0	3	1	0	0	0	0	0	0	0	0	0	-1
11	Megan Kamps	03:50	0-1	0-0	0-0	0	0	0	0	1	0	0	1	1	0	0	0	0	0	0	0	-3
32	Rebecca Black	00:57	0-0	0-0	0-0	0	0	0	0	0	0	0	0	0	0	0	0	0	0	0	0	2
Team						1	0	1			0			0								
Totals			4-10	1-4	4-5	4	4	8	5	6	13	3	6	1	0	0	0	0	0	0	0	1

Shooting By Period		
3 rd FG%	4-10	40.0%
3PT%	1-4	25.0%
FT%	4-5	80%
GM FG%	4-10	40.0%
3PT%	1-4	25.0%
FT%	4-5	80.0%

Dead Ball Rebounds: 0, 0

Technical Fouls::NONE

Arizona St. - 12

NO.	Name	Min	FG		3P		FT			Rebounds			Fouls		TP	AS	TO	ST	Blocks		+/-	
			M-A	M-A	M-A	M-A	OR	DR	TOT	PF	FD	BS	BA									
13	Maggie Besselink	F 06:50	0-2	0-0	0-0	0	0	0	0	0	0	0	0	0	0	0	1	1	0	0	0	0
20	Katelyn Levings	F 07:41	0-1	0-0	1-2	2	1	3	1	2	1	0	0	2	0	0	2	0	0	0	0	5
0	Taya Hanson	G 08:22	2-4	2-4	0-0	0	1	1	0	2	6	0	0	2	0	0	2	0	0	0	0	3
2	Jaddan Simmons	G 08:13	1-2	0-0	1-2	1	0	1	0	1	3	1	1	0	0	0	0	0	0	0	0	4
5	Jamie Loera	G 04:58	1-2	0-1	0-0	0	1	1	2	0	2	0	1	0	0	0	0	0	0	0	0	-4
3	Gabriela Bosquez	03:04	0-0	0-0	0-0	0	0	0	1	0	0	0	0	0	0	0	0	0	0	0	0	2
11	Sydney Erikstrup	02:09	0-0	0-0	0-0	0	0	0	1	0	0	0	0	0	0	0	0	0	0	0	0	-4
22	Eboni Walker	03:20	0-1	0-0	0-0	2	0	2	0	0	0	0	1	0	0	0	0	0	0	0	0	-3
24	Bre'yanna Sanders	02:09	0-0	0-0	0-0	1	0	1	0	0	0	0	0	0	0	0	0	0	0	0	0	-4
21	Sydnei Caldwell	03:14	0-1	0-0	0-0	0	0	0	1	0	0	0	0	1	0	0	0	0	0	0	0	-4
Team						0	0	0			0			1								
Totals			4-13	2-5	2-4	6	3	9	6	5	12	1	6	5	0	0	0	0	0	0	0	-1

Shooting By Period		
3 rd FG%	4-13	30.8%
3PT%	2-5	40.0%
FT%	2-4	50%
GM FG%	4-13	30.8%
3PT%	2-5	40.0%
FT%	2-4	50.0%

Dead Ball Rebounds: 1, 0

Technical Fouls::NONE

	SUU	ASU
Biggest lead	0 (1 st 10:00)	12 (3 rd 2:22)
Best Scoring Run	6(3 rd 0:30)	5(3 rd 2:22)
Lead Changes	0	
Times Tied	0	
Time with Lead	00:00	09:48

Points from	SUU	ASU
Turnovers	5	7
Paint	6	4
Second Chance	3	2
Fast Breaks	6	0
Bench	5	0

	Period by Period Scoring				
	1st	2nd	3rd	4th	TOT
SUU	8	9	13	14	44
ASU	12	12	12	19	55



Southern Utah at Arizona St.

02/08/21 Desert Financial Arena, Tempe
2020-21 Women's Basketball

Officials: Melissa Barlow, Julie Krommenhoek, Kaili Kimura

Period 4

Quarter Starters:

ASU	0 Hanson T	2 Simmons J	11 Erikstrup S	20 Levings K	24 Sanders B
SUU	10 Graves L	15 Daugherty C	21 Eaton M	24 Ballena D	32 Black R

Game Time	ASU	Score	Diff	SUU
09:40		36-32	4	21 EATON M 2pt FG in the paint, driving layup made (9)
09:40				10 GRAVES L assist (1)
09:15	11 ERIKSTRUP S substitution out			
09:15	20 LEVINGS K substitution out			
09:15	24 SANDERS B substitution out			
09:15	13 BESSELINK M substitution in			
09:15	21 CALDWELL S substitution in			
09:15	22 WALKER E substitution in			
09:09	0 HANSON T 3pt FG , jump shot made (15)	39-32	7	
09:09	2 SIMMONS J assist (2)			
08:49	22 WALKER E foul shooting (2 - 1)			21 EATON M foul drawn (3)
08:49				32 BLACK R substitution out
08:49				40 FRANDSEN D substitution in
08:49		39-33	6	21 EATON M free throw 1 - 2 made (10)
08:49		39-34	5	21 EATON M free throw 2 - 2 made (11)
08:36	13 BESSELINK M 2pt FG in the paint, layup made (4)	41-34	7	
08:36	2 SIMMONS J assist (3)			
08:20		41-36	5	15 DAUGHERTY C 2pt FG in the paint, driving layup made (7)
08:05	0 HANSON T 3pt FG , jump shot missed			
08:01	offensive rebound (28)			
08:01				10 GRAVES L substitution out
08:01				23 BARRINGTON K substitution in
07:56	2 SIMMONS J 3pt FG second chance, jump shot missed			
07:53	13 BESSELINK M offensive rebound (3)			
07:37	2 SIMMONS J 2pt FG second chance in the paint, layup made (13)	43-36	7	
07:19	13 BESSELINK M foul personal (3 - 2)			21 EATON M foul drawn (4)
07:19	13 BESSELINK M substitution out			
07:19	20 LEVINGS K substitution in			
07:16	20 LEVINGS K steal (3)			24 BALLENA D turnover bad pass (3)
07:13	20 LEVINGS K turnover lost ball (2)			40 FRANDSEN D steal (1)
07:13	20 LEVINGS K foul personal (3 - 3)			40 FRANDSEN D foul drawn (4)
07:08	Timeout 30 Sec			
07:08	Timeout media			
06:49				24 BALLENA D 3pt FG from turnover, jump shot missed
06:44				23 BARRINGTON K offensive rebound (3)
06:31				15 DAUGHERTY C 2pt FG from turnover second chance in the paint, jump shot blocked
06:31	20 LEVINGS K block (1)			
06:25				40 FRANDSEN D offensive rebound (3)
06:25		43-38	5	40 FRANDSEN D 2pt FG from turnover second chance in the paint, layup made (10)
06:17	20 LEVINGS K 2pt FG fast break in the paint, layup made (3)	45-38	7	
06:17	0 HANSON T assist (1)			



Southern Utah at Arizona St.

02/08/21 Desert Financial Arena, Tempe
2020-21 Women's Basketball

Officials: Melissa Barlow, Julie Krommenhoek, Kaili Kimura

Game Time	ASU	Score	Diff	SUU
05:59				40 FRANSEN D 2pt FG outside the paint, jump shot missed
05:55	22 WALKER E defensive rebound (6)			
05:54	22 WALKER E turnover lost ball (3)			21 EATON M steal (1)
05:47				40 FRANSEN D 2pt FG from turnover in the paint, layup missed
05:45	defensive rebound (31)			
05:45	22 WALKER E substitution out			
05:45	13 BESSELINK M substitution in			
05:18	21 CALDWELL S 2pt FG outside the paint, jump shot missed			
05:15				24 BALLENA D defensive rebound (3)
05:01	13 BESSELINK M steal (2)			21 EATON M turnover lost ball (1)
05:00	21 CALDWELL S substitution out			
05:00	5 LOERA J substitution in			
05:00				24 BALLENA D substitution out
05:00				34 JOHNSTON S substitution in
04:37	5 LOERA J 3pt FG from turnover, jump shot made (5)	48-38	10	
04:37	2 SIMMONS J assist (4)			
04:33	20 LEVINGS K substitution out			
04:33	24 SANDERS B substitution in			
04:14				40 FRANSEN D 2pt FG in the paint, jump shot missed
04:10				40 FRANSEN D offensive rebound (4)
04:00				21 EATON M 2pt FG second chance outside the paint, jump shot missed
03:55				23 BARRINGTON K offensive rebound (4)
03:52				21 EATON M 3pt FG second chance, jump shot missed
03:50				40 FRANSEN D offensive rebound (5)
03:50	13 BESSELINK M foul shooting (4 - 4)			40 FRANSEN D foul drawn (5)
03:50	24 SANDERS B substitution out			
03:50	20 LEVINGS K substitution in			
03:50		48-39	9	40 FRANSEN D free throw 1 - 2 made (11)
03:50				40 FRANSEN D free throw 2 - 2 missed
03:48	20 LEVINGS K defensive rebound (4)			
03:27	20 LEVINGS K foul drawn (5)			34 JOHNSTON S foul shooting (1 - 1)
03:27	13 BESSELINK M substitution out			
03:27	22 WALKER E substitution in			
03:27	20 LEVINGS K free throw 1 - 2 missed			
03:27	offensive dead ball rebound (3)			
03:27	20 LEVINGS K free throw 2 - 2 made (4)	49-39	10	
03:11				23 BARRINGTON K 3pt FG , jump shot missed
03:08	22 WALKER E defensive rebound (7)			
03:08	jump ball situation			
02:41	22 WALKER E 2pt FG in the paint, layup made (4)	51-39	12	
02:41	5 LOERA J assist (2)			
02:28	5 LOERA J steal (1)			15 DAUGHERTY C turnover lost ball (5)
02:23	5 LOERA J 2pt FG fast break from turnover in the paint, driving layup made (7)	53-39	14	
02:21				Timeout 60 Sec
02:21	22 WALKER E substitution out			
02:21	13 BESSELINK M substitution in			
02:21				34 JOHNSTON S substitution out



Southern Utah at Arizona St.

02/08/21 Desert Financial Arena, Tempe
2020-21 Women's Basketball

Officials: Melissa Barlow, Julie Krommenhoek, Kaili Kimura

Game Time	ASU	Score	Diff	SUU
02:21				24 BALLENA D substitution in
02:05				21 EATON M 2pt FG in the paint, driving layup missed
02:02	0 HANSON T defensive rebound (5)			
02:01	0 HANSON T turnover lost ball (1)			40 FRANSEN D steal (2)
01:57				21 EATON M 2pt FG from turnover in the paint, layup missed
01:52	5 LOERA J defensive rebound (3)			
01:50	0 HANSON T 2pt FG in the paint, layup blocked			
01:50				40 FRANSEN D block (2)
01:50	offensive rebound (36)			
01:50				23 BARRINGTON K substitution out
01:50				10 GRAVES L substitution in
01:37	2 SIMMONS J 2pt FG second chance in the paint, driving layup missed			
01:34				40 FRANSEN D defensive rebound (6)
01:20		53-41	12	15 DAUGHERTY C 2pt FG in the paint, driving layup made (9)
00:51	20 LEVINGS K 2pt FG outside the paint, jump shot made (6)	55-41	14	
00:51	13 BESSELINK M assist (1)			
00:39	2 SIMMONS J foul shooting (2 - 5)			15 DAUGHERTY C foul drawn (4)
00:39				15 DAUGHERTY C free throw 1 - 2 missed
00:39				offensive dead ball rebound (2)
00:39		55-42	13	15 DAUGHERTY C free throw 2 - 2 made (10)
00:39	Timeout 30 Sec			
00:25	5 LOERA J 2pt FG outside the paint, jump shot missed			
00:23				40 FRANSEN D defensive rebound (7)
00:22	13 BESSELINK M foul personal (5 - 6)			40 FRANSEN D foul drawn (6)
00:22	13 BESSELINK M substitution out			
00:22	22 WALKER E substitution in			
00:22		55-43	12	40 FRANSEN D free throw 1 - 2 made (12)
00:22		55-44	11	40 FRANSEN D free throw 2 - 2 made (13)
00:22	Timeout 60 Sec			
END OF GAME				
ASU 55-44 SUU				



Southern Utah at Arizona St.

02/08/21 Desert Financial Arena, Tempe
2020-21 Women's Basketball

Officials: Melissa Barlow, Julie Krommenhoek, Kaili Kimura

Southern Utah - 14

NO.	Name	F/G	Min	FG	3P	FT	Rebounds			Fouls		TP	AS	TO	ST	Blocks		+/-
				M-A	M-A	M-A	OR	DR	TOT	PF	FD					BS	BA	
40	Darri Frandsen	F	08:49	1-4	0-0	3-4	3	2	5	0	3	5	0	0	2	1	0	-4
2	Margarita Satini	G	00:00															
10	Liz Graves	G	03:49	0-0	0-0	0-0	0	0	0	0	0	0	1	0	0	0	0	4
15	Cherita Daugherty	G	10:00	2-3	0-0	1-2	0	0	0	0	1	5	0	1	0	0	1	-5
21	Madelyn Eaton	G	10:00	1-5	0-1	2-2	0	0	0	0	2	4	0	1	1	0	0	-5
32	Rebecca Black		01:11	0-0	0-0	0-0	0	0	0	0	0	0	0	0	0	0	0	-1
23	Kinsley Barrington		06:11	0-1	0-1	0-0	2	0	2	0	0	0	0	0	0	0	0	-9
34	Samantha Johnston		02:39	0-0	0-0	0-0	0	0	0	1	0	0	0	0	0	0	0	-7
24	Daylani Ballena		07:21	0-1	0-1	0-0	0	1	1	0	0	0	0	1	0	0	0	2
Team							0	0	0			0						
Totals				4-14	0-3	6-8	5	3	8	1	6	14	1	3	3	1	1	-5

Shooting By Period		
4 th FG%	4-14	28.6%
3PT%	0-3	0.0%
FT%	6-8	75%
GM FG%	4-14	28.6%
3PT%	0-3	0.0%
FT%	6-8	75.0%

Dead Ball Rebounds: 1, 0

Technical Fouls::NONE

Arizona St. - 19

NO.	Name	F/G	Min	FG	3P	FT	Rebounds			Fouls		TP	AS	TO	ST	Blocks		+/-
				M-A	M-A	M-A	OR	DR	TOT	PF	FD					BS	BA	
13	Maggie Besselink	F	06:13	1-1	0-0	0-0	1	0	1	3	0	2	1	0	1	0	0	4
20	Katelyn Levings	F	07:21	2-2	0-0	1-2	0	1	1	1	1	5	0	1	1	1	0	2
0	Taya Hanson	G	10:00	1-3	1-2	0-0	0	1	1	0	0	3	1	1	0	0	1	5
2	Jaddan Simmons	G	10:00	1-3	0-1	0-0	0	0	0	1	0	2	3	0	0	0	0	5
5	Jamie Loera	G	05:00	2-3	1-1	0-0	0	1	1	0	0	5	1	0	1	0	0	4
11	Sydney Erikstrup		00:45	0-0	0-0	0-0	0	0	0	0	0	0	0	0	0	0	0	-2
21	Sydnei Caldwell		04:15	0-1	0-0	0-0	0	0	0	0	0	0	0	0	0	0	0	3
22	Eboni Walker		04:58	1-1	0-0	0-0	0	2	2	1	0	2	0	1	0	0	0	6
24	Bre'yanna Sanders		01:28	0-0	0-0	0-0	0	0	0	0	0	0	0	0	0	0	0	-2
Team							2	1	3			0						
Totals				8-14	2-4	1-2	3	6	9	6	1	19	6	3	3	1	1	5

Shooting By Period		
4 th FG%	8-14	57.1%
3PT%	2-4	50.0%
FT%	1-2	50%
GM FG%	8-14	57.1%
3PT%	2-4	50.0%
FT%	1-2	50.0%

Dead Ball Rebounds: 1, 0

Technical Fouls::NONE

	SUU	ASU
Biggest lead	0 (1 st 10:00)	14 (4 th 2:23)
Best Scoring Run	3(4 th 0:22)	5(4 th 4:37)
Lead Changes	0	
Times Tied	0	
Time with Lead	00:00	09:40

	SUU	ASU
Points from		
Turnovers	2	5
Paint	8	10
Second Chance	3	2
Fast Breaks	0	4
Bench	0	2

Period by Period Scoring					
	1st	2nd	3rd	4th	TOT
SUU	8	9	13	14	44
ASU	12	12	12	19	55



Southern Utah at Arizona St.

02/08/21 Desert Financial Arena, Tempe
2020-21 Women's Basketball

Officials: Melissa Barlow, Julie Krommenhoek, Kaili Kimura

Southern Utah - 27

NO.	Name	Min	FG		3P		FT		Rebounds			Fouls		TP	AS	TO	ST	Blocks		+/-
			M-A	M-A	M-A	M-A	OR	DR	TOT	PF	FD	BS	BA							
40	Darri Frandsen	F 14:02	2-5	0-0	4-5	3	2	5	1	4	8	0	0	2	1	0	2	1	0	-2
2	Margarita Satini	G 03:07	0-0	0-0	0-0	0	0	0	0	0	0	0	0	2	0	0	0	0	0	0
10	Liz Graves	G 09:00	0-0	0-0	1-2	0	0	0	0	1	1	1	0	0	0	0	0	0	10	
15	Cherita Daugherty	G 17:07	2-5	0-1	1-2	0	2	2	2	1	5	0	3	0	0	1	3	0	1	3
21	Madelyn Eaton	G 20:00	2-7	0-1	4-4	3	1	4	1	4	8	1	1	1	0	0	-4	0	0	-4
23	Kinsley Barrington	11:00	1-3	0-2	0-0	2	0	2	1	0	2	0	0	0	0	0	0	0	-14	
24	Daylani Ballena	12:41	0-1	0-1	0-0	0	2	2	0	1	0	1	2	0	0	0	0	0	-3	
34	Samantha Johnston	07:05	1-2	1-2	0-0	0	0	0	1	0	3	1	0	0	0	0	0	0	-8	
11	Megan Kamps	03:50	0-1	0-0	0-0	0	0	0	0	1	0	0	1	1	0	0	0	0	-3	
32	Rebecca Black	02:08	0-0	0-0	0-0	0	0	0	0	0	0	0	0	0	0	0	0	0	1	
Team									1	0	1	0	0							
Totals			8-24	1-7	10-13	9	7	16	6	12	27	4	9	4	1	1	-4			

Shooting By Period		
3 rd FG%	4-10	40.0%
3PT%	1-4	25.0%
FT%	4-5	80%
4 th FG%	4-14	28.6%
3PT%	0-3	0.0%
FT%	6-8	75%
GM FG%	8-24	33.3%
3PT%	1-7	14.3%
FT%	10-13	76.9%

Dead Ball Rebounds: 1, 0

Technical Fouls::NONE

Arizona St. - 31

NO.	Name	Min	FG		3P		FT		Rebounds			Fouls		TP	AS	TO	ST	Blocks		+/-
			M-A	M-A	M-A	M-A	OR	DR	TOT	PF	FD	BS	BA							
13	Maggie Besselink	F 13:03	1-3	0-0	0-0	1	0	1	3	0	2	1	1	2	0	0	4	0	0	4
20	Katelyn Levings	F 15:02	2-3	0-0	2-4	2	2	4	2	3	6	0	1	3	1	0	7	0	0	7
0	Taya Hanson	G 18:22	3-7	3-6	0-0	0	2	2	0	2	9	1	1	2	0	1	8	0	1	8
2	Jaddan Simmons	G 18:13	2-5	0-1	1-2	1	0	1	1	1	5	4	1	0	0	0	9	0	0	9
5	Jamie Loera	G 09:58	3-5	1-2	0-0	0	2	2	2	0	7	1	1	1	0	0	0	0	0	
3	Gabriela Bosquez	03:04	0-0	0-0	0-0	0	0	0	1	0	0	0	0	0	0	0	0	0	2	
11	Sydney Erikstrup	02:54	0-0	0-0	0-0	0	0	0	1	0	0	0	0	0	0	0	0	0	-6	
22	Eboni Walker	08:18	1-2	0-0	0-0	2	2	4	1	0	2	0	2	0	0	0	0	0	3	
24	Bre'yanna Sanders	03:37	0-0	0-0	0-0	1	0	1	0	0	0	0	0	0	0	0	0	0	-6	
21	Sydnei Caldwell	07:29	0-2	0-0	0-0	0	0	0	1	0	0	0	1	0	0	0	0	0	-1	
Team									2	1	3	0	1							
Totals			12-27	4-9	3-6	9	9	18	12	6	31	7	9	8	1	1	4			

Shooting By Period		
3 rd FG%	4-13	30.8%
3PT%	2-5	40.0%
FT%	2-4	50%
4 th FG%	8-14	57.1%
3PT%	2-4	50.0%
FT%	1-2	50%
GM FG%	12-27	44.4%
3PT%	4-9	44.4%
FT%	3-6	50.0%

Dead Ball Rebounds: 2, 0

Technical Fouls::NONE

	SUU	ASU
Biggest lead	0 (1 st 10:00)	14 (4 th 2:23)
Best Scoring Run	8(4 th 9:40)	5(3 rd 2:22)
Lead Changes	0	
Times Tied	0	
Time with Lead	00:00	19:48

	SUU	ASU
Points from		
Turnovers	7	12
Paint	14	14
Second Chance	6	4
Fast Breaks	6	4
Bench	5	2

	Period by Period Scoring				
	1st	2nd	3rd	4th	TOT
SUU	8	9	13	14	44
ASU	12	12	12	19	55



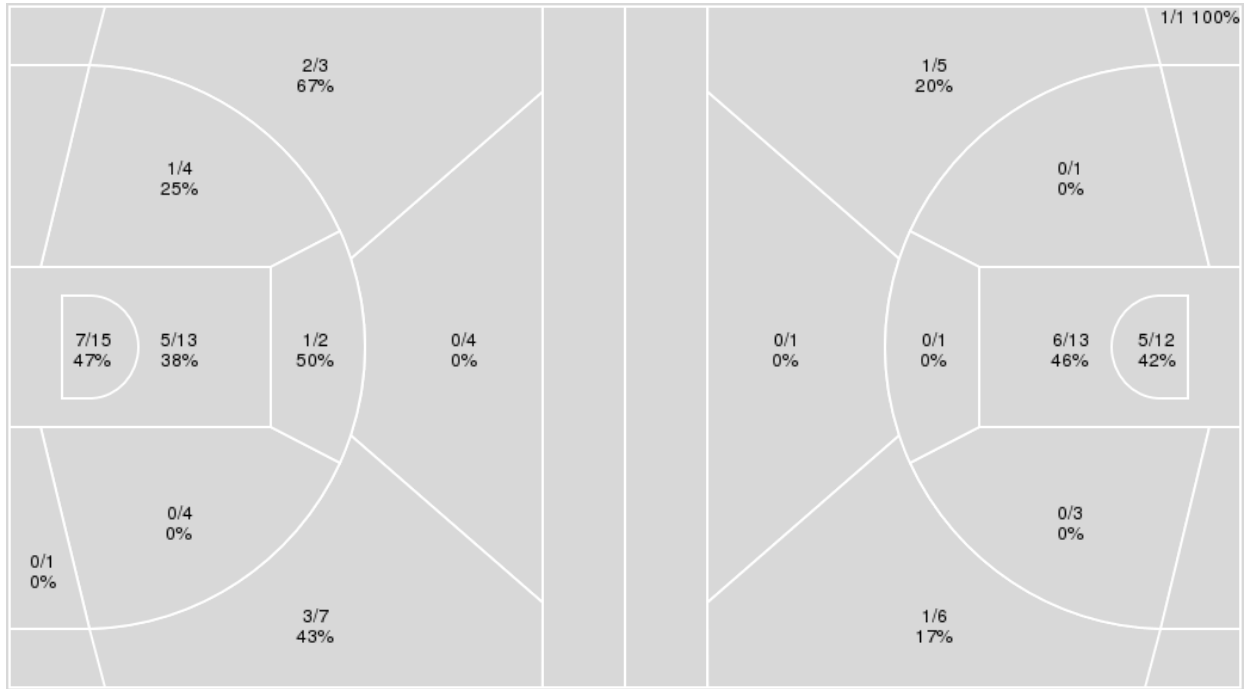
Officials: Melissa Barlow, Julie Krommenhoek, Kaili Kimura

{ Players => 0, 1, 2, 3, 5, 10, 11, 13, 20, 21, 22, 24, 32, 43; } FG Types
 => All; Results => All;

{ Players => 2, 4, 10, 11, 14, 15, 20, 21, 23, 24, 30, 32, 34, 40, 42; } FG
 Types => All; Results => All;

Arizona St.

Southern Utah



Arizona St.	M/A	%
Field Goals	19/53	36
2 Points	14/39	36
3 Points	5/14	36
Free Throws	12/17	71

Southern Utah	M/A	%
Field Goals	14/43	33
2 Points	11/30	37
3 Points	3/13	23
Free Throws	13/18	72



Southern Utah at Arizona St.

02/08/21 Desert Financial Arena, Tempe
2020-21 Women's Basketball

Officials: Melissa Barlow, Julie Krommenhoek, Kaili Kimura

Southern Utah

No	Name	Mins		Score		Points Diff		Points per Min		Assists		Rebounds		Steals		Turnovers	
		On	Off	On	Off	On	Off	On	Off	On	Off	On	Off	On	Off	On	Off
2	Margarita Satini	14:14	25:46	9 - 16	35 - 39	-7	-4	0.63	1.36	1	7	12	20	0	5	12	7
10	Liz Graves	16:29	23:31	24 - 18	20 - 37	6	-17	1.46	0.85	3	5	13	19	1	4	7	12
11	Megan Kamps	11:09	28:51	10 - 19	34 - 36	-9	-2	0.90	1.18	4	4	9	23	2	3	4	15
14	Pyper Thornberry	06:37	33:23	4 - 10	40 - 45	-6	-5	0.60	1.20	2	6	4	28	1	4	4	15
15	Cherita Daugherty	34:23	05:37	40 - 42	4 - 13	-2	-9	1.16	0.71	6	2	28	4	5	0	14	5
21	Madelyn Eaton	38:54	01:06	44 - 53	0 - 2	-9	-2	1.13	0.00	8	0	32	0	5	0	19	0
23	Kinsley Barrington	16:25	23:35	16 - 27	28 - 28	-11	0	0.97	1.19	3	5	14	18	3	2	9	10
24	Daylani Ballena	25:24	14:36	30 - 37	14 - 18	-7	-4	1.18	0.96	7	1	18	14	4	1	10	9
32	Rebecca Black	02:08	37:52	4 - 3	40 - 52	1	-12	1.88	1.06	1	7	1	31	0	5	0	19
34	Samantha Johnston	07:05	32:55	9 - 17	35 - 38	-8	-3	1.27	1.06	2	6	6	26	1	4	2	17
40	Darri Frandsen	27:12	12:48	30 - 33	14 - 22	-3	-8	1.10	1.09	3	5	23	9	3	2	14	5

Arizona St.

No	Name	Mins		Score		Points Diff		Points per Min		Assists		Rebounds		Steals		Turnovers	
		On	Off	On	Off	On	Off	On	Off	On	Off	On	Off	On	Off	On	Off
0	Taya Hanson	33:51	06:09	47 - 33	8 - 11	14	-3	1.39	1.30	7	2	33	3	13	1	9	4
2	Jaddan Simmons	29:17	10:43	43 - 32	12 - 12	11	0	1.47	1.12	8	1	25	11	10	4	8	5
3	Gabriela Bosquez	10:49	29:11	21 - 10	34 - 34	11	0	1.94	1.17	2	7	8	28	6	8	2	11
5	Jamie Loera	21:10	18:50	20 - 21	35 - 23	-1	12	0.94	1.86	4	5	23	13	6	8	8	5
11	Sydney Erikstrup	07:25	32:35	8 - 13	47 - 31	-5	16	1.08	1.44	2	7	3	33	1	13	4	9
13	Maggie Besselink	20:53	19:07	26 - 25	29 - 19	1	10	1.25	1.52	5	4	19	17	8	6	8	5
20	Katelyn Levings	22:41	17:19	29 - 18	26 - 26	11	0	1.28	1.50	5	4	18	18	10	4	7	6
21	Sydnei Caldwell	17:28	22:32	26 - 23	29 - 21	3	8	1.49	1.29	4	5	16	20	6	8	8	5
22	Eboni Walker	17:10	22:50	34 - 21	21 - 23	13	-2	1.98	0.92	6	3	19	17	6	8	6	7
24	Bre'yanna Sanders	13:04	26:56	13 - 17	42 - 27	-4	15	0.99	1.56	2	7	10	26	3	11	4	9
43	Imogen Greenslade	06:12	33:48	8 - 7	47 - 37	1	10	1.29	1.39	0	9	6	30	1	13	1	12

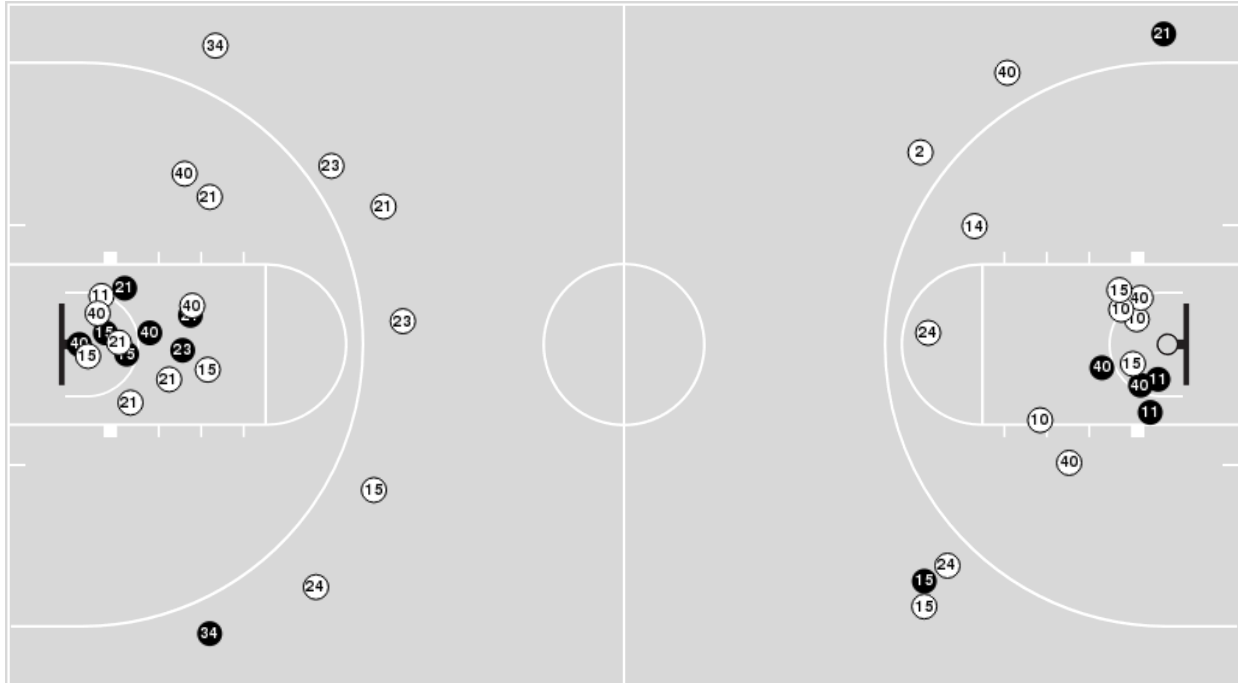


Officials: Melissa Barlow, Julie Krommenhoek, Kaili Kimura

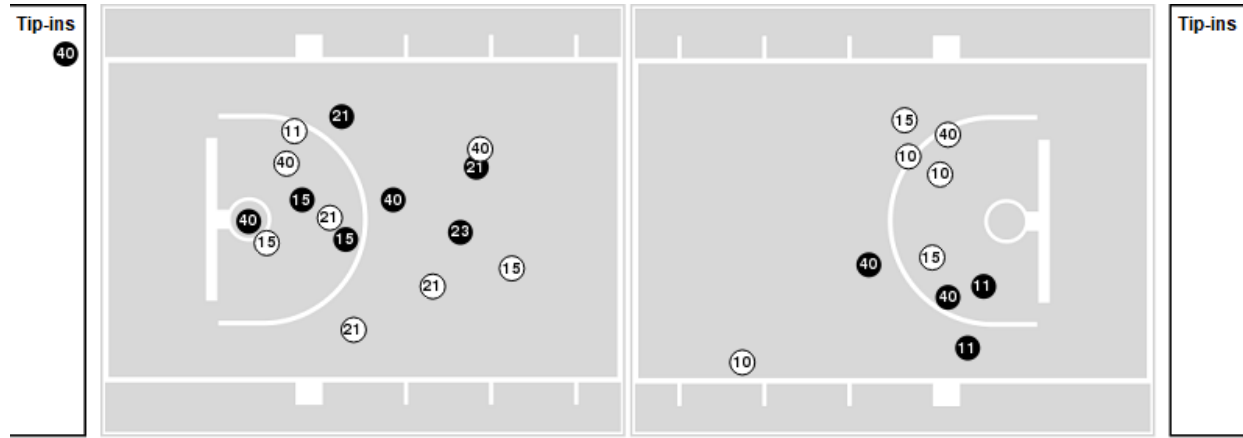
Players => 2, 4, 10, 11, 14, 15, 20, 21, 23, 24, 30, 32, 34, 40, 42FG Types=>AllResults=>All

Southern Utah

All Field Goals



Blow Up Chart



● Made ○ Missed N - Player Number

Southern Utah	M/A	%
Field Goals	14/43	33
2 Points	11/30	37
3 Points	3/13	23
Free Throws	13/18	72

Southern Utah	M/A	%
Points in the Paint	22 (11 / 25)	44
Fast Break Points	6 (3/5)	60
Second Chance Points	6 (4/12)	33
Effective FG%	36	

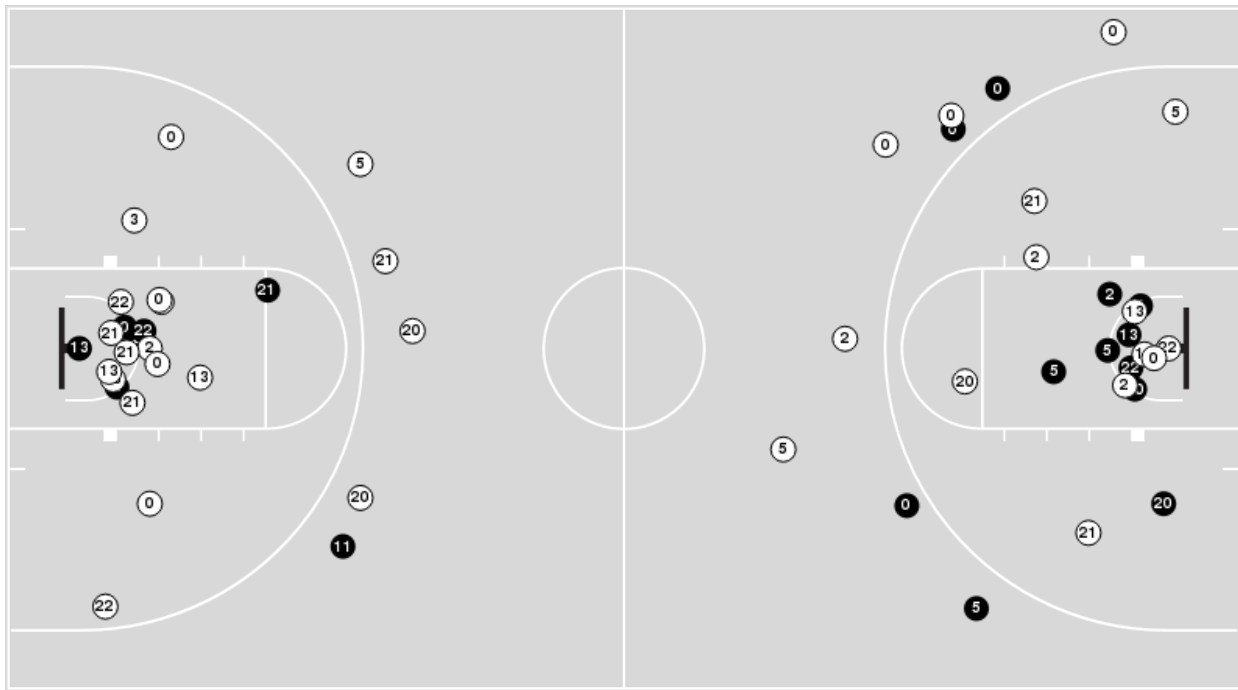


Officials: Melissa Barlow, Julie Krommenhoek, Kaili Kimura

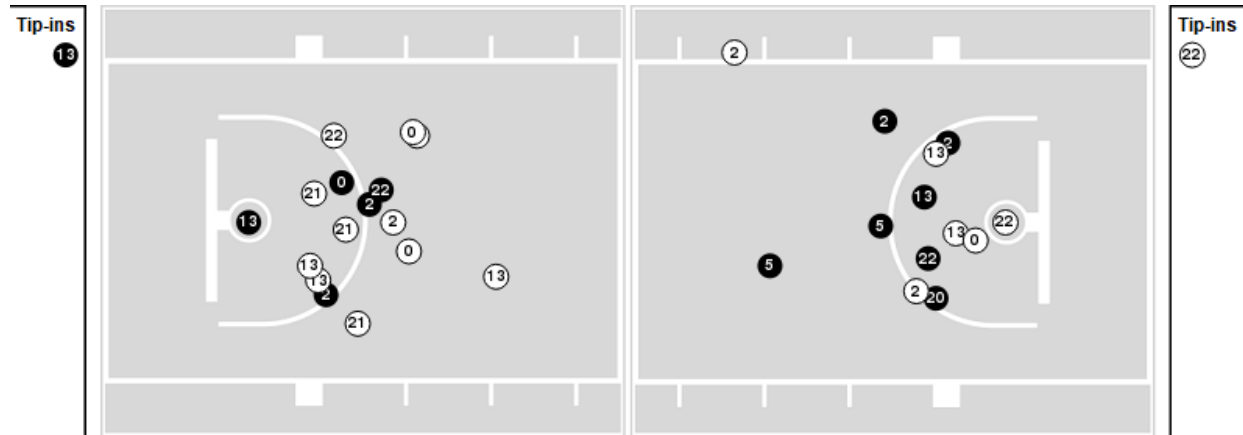
Players => 0, 1, 2, 3, 5, 10, 11, 13, 20, 21, 22, 24, 32, 43FG Types=>AllResults=>All

Arizona St.

All Field Goals



Blow Up Chart



● Made ○ Missed N - Player Number

Arizona St.	M/A	%
Field Goals	19/53	36
2 Points	14/39	36
3 Points	5/14	36
Free Throws	12/17	71

Arizona St.	M/A	%
Points in the Paint	24 (12 / 28)	43
Fast Break Points	6 (3/3)	100
Second Chance Points	10 (5/13)	38
Effective FG%	41	



Southern Utah at Arizona St.

02/08/21 Desert Financial Arena, Tempe
2020-21 Women's Basketball

Officials: Melissa Barlow, Julie Krommenhoek, Kaili Kimura

Southern Utah

Lineup	Quarter On	Time On	Quarter Off	Time Off	Time on Court	Score	Score Diff	Reb	Stl	Tov	Ass	PPP
2- Satini M/ 10- Graves L/ 15- Daugherty C/ 21- Eaton M/ 40- Frandsen D/	1	10:00	1	05:30	04:30	0-5	-5	6	0	4	0	0.0000
2- Satini M/ 15- Daugherty C/ 21- Eaton M/ 23- Barrington K/ 40- Frandsen D/	1	05:30	1	02:43	02:47	5-3	2	1	0	1	0	1.2887
15- Daugherty C/ 21- Eaton M/ 23- Barrington K/ 24- Ballena D/ 40- Frandsen D/	1	02:43	1	01:05	01:38	3-2	1	2	0	1	1	1.0000
2- Satini M/ 14- Thornberry P/ 21- Eaton M/ 23- Barrington K/ 24- Ballena D/	1	01:05	1	00:17	00:47	0-0	0	1	0	1	0	0.0000
2- Satini M/ 11- Kamps M/ 14- Thornberry P/ 21- Eaton M/ 24- Ballena D/	1	00:17	2	08:21	01:57	2-4	-2	1	0	3	1	0.5000
10- Graves L/ 15- Daugherty C/ 21- Eaton M/ 24- Ballena D/ 40- Frandsen D/	2	08:21	2	05:22	02:59	5-4	1	0	0	0	1	1.4535
11- Kamps M/ 15- Daugherty C/ 21- Eaton M/ 24- Ballena D/ 40- Frandsen D/	2	05:22	2	04:27	00:55	0-0	0	2	0	0	0	0.0000
2- Satini M/ 11- Kamps M/ 15- Daugherty C/ 24- Ballena D/ 40- Frandsen D/	2	04:27	2	04:06	00:21	0-0	0	0	0	0	0	0.0000
2- Satini M/ 11- Kamps M/ 14- Thornberry P/ 15- Daugherty C/ 24- Ballena D/	2	04:06	2	03:21	00:45	0-2	-2	0	0	0	0	0.0000
11- Kamps M/ 14- Thornberry P/ 15- Daugherty C/ 21- Eaton M/ 24- Ballena D/	2	03:21	2	00:12	03:08	2-4	-2	2	1	0	1	0.6667
11- Kamps M/ 15- Daugherty C/ 21- Eaton M/ 23- Barrington K/ 24- Ballena D/	2	00:12	3	10:00	00:13	0-0	0	1	0	0	0	0.0000
2- Satini M/ 10- Graves L/ 15- Daugherty C/ 21- Eaton M/ 40- Frandsen D/	3	10:00	3	06:53	03:07	2-2	0	3	0	3	0	0.4000
15- Daugherty C/ 21- Eaton M/ 23- Barrington K/ 24- Ballena D/ 40- Frandsen D/	3	06:53	3	04:57	01:56	3-1	2	1	0	2	1	0.8721
21- Eaton M/ 23- Barrington K/ 24- Ballena D/ 34- Johnston S/ 40- Frandsen D/	3	04:57	3	04:47	00:10	0-0	0	0	0	0	0	0.0000
11- Kamps M/ 21- Eaton M/ 23- Barrington K/ 24- Ballena D/ 34- Johnston S/	3	04:47	3	02:04	02:43	2-9	-7	2	0	1	1	0.6667
10- Graves L/ 11- Kamps M/ 15- Daugherty C/ 21- Eaton M/ 34- Johnston S/	3	02:04	3	00:56	01:07	4-0	4	1	1	0	1	2.1277
10- Graves L/ 15- Daugherty C/ 21- Eaton M/ 32- Black R/ 34- Johnston S/	3	00:56	3	00:30	00:26	2-0	2	0	0	0	0	2.2727
10- Graves L/ 15- Daugherty C/ 21- Eaton M/ 24- Ballena D/ 32- Black R/	3	00:30	4	08:49	01:42	2-3	-1	1	0	0	1	2.0000
10- Graves L/ 15- Daugherty C/ 21- Eaton M/ 24- Ballena D/ 40- Frandsen D/	4	08:49	4	08:01	00:48	4-2	2	0	0	0	0	2.1277
15- Daugherty C/ 21- Eaton M/ 23- Barrington K/ 24- Ballena D/ 40- Frandsen D/	4	08:01	4	05:00	03:01	2-4	-2	3	2	2	0	0.4000
15- Daugherty C/ 21- Eaton M/ 23- Barrington K/ 34- Johnston S/ 40- Frandsen D/	4	05:00	4	02:21	02:39	1-8	-7	3	0	1	0	0.3472
15- Daugherty C/ 21- Eaton M/ 23- Barrington K/ 24- Ballena D/ 40- Frandsen D/	4	02:21	4	01:50	00:31	0-0	0	0	1	0	0	0.0000
10- Graves L/ 15- Daugherty C/ 21- Eaton M/ 24- Ballena D/ 40- Frandsen D/	4	01:50	4	00:00	01:50	5-2	3	2	0	0	0	1.8116



Southern Utah at Arizona St.

02/08/21 Desert Financial Arena, Tempe
2020-21 Women's Basketball

Officials: Melissa Barlow, Julie Krommenhoek, Kaili Kimura

Arizona St.

Lineup	Quarter On	Time On	Quarter Off	Time Off	Time on Court	Score	Score Diff	Reb	Stl	Tov	Ass	PPP
0- Hanson T/2- Simmons J/5- Loera J/13- Besselink M/20- Levings K/	1	10:00	1	07:10	02:50	2-0	2	3	0	0	0	0.4000
0- Hanson T/3- Bosquez G/21- Caldwell S/22- Walker E/24- Sanders B/	1	07:10	1	05:30	01:40	3-0	3	3	2	0	0	1.5957
3- Bosquez G/11- Erikstrup S/21- Caldwell S/22- Walker E/24- Sanders B/	1	05:30	1	04:00	01:30	3-3	0	0	1	1	1	1.0000
2- Simmons J/5- Loera J/11- Erikstrup S/13- Besselink M/20- Levings K/	1	04:00	1	03:24	00:36	0-0	0	1	0	1	0	0.0000
2- Simmons J/5- Loera J/11- Erikstrup S/13- Besselink M/43- Greenslade I/	1	03:24	1	03:06	00:18	0-0	0	0	0	0	0	0.0000
0- Hanson T/2- Simmons J/5- Loera J/13- Besselink M/43- Greenslade I/	1	03:06	1	01:05	02:01	2-5	-3	2	1	0	0	0.6944
0- Hanson T/3- Bosquez G/20- Levings K/21- Caldwell S/22- Walker E/	1	01:05	1	00:17	00:47	2-0	2	0	1	0	0	1.0638
0- Hanson T/2- Simmons J/3- Bosquez G/20- Levings K/22- Walker E/	1	00:17	2	10:00	00:18	0-0	0	0	0	0	0	0.0000
0- Hanson T/2- Simmons J/3- Bosquez G/13- Besselink M/20- Levings K/	2	10:00	2	08:21	01:39	2-2	0	0	1	0	0	1.0000
2- Simmons J/11- Erikstrup S/13- Besselink M/21- Caldwell S/24- Sanders B/	2	08:21	2	07:55	00:26	0-2	-2	0	0	1	0	0.0000
2- Simmons J/11- Erikstrup S/21- Caldwell S/22- Walker E/24- Sanders B/	2	07:55	2	07:18	00:37	2-1	1	0	0	0	0	2.0000
2- Simmons J/5- Loera J/21- Caldwell S/22- Walker E/24- Sanders B/	2	07:18	2	07:18	00:00	0-0	0	0	0	0	0	0.0000
2- Simmons J/5- Loera J/11- Erikstrup S/22- Walker E/24- Sanders B/	2	07:18	2	06:42	00:36	2-0	2	1	0	0	1	2.0000
5- Loera J/11- Erikstrup S/21- Caldwell S/22- Walker E/24- Sanders B/	2	06:42	2	06:27	00:15	0-0	0	0	0	0	0	0.0000
0- Hanson T/5- Loera J/21- Caldwell S/22- Walker E/24- Sanders B/	2	06:27	2	05:22	01:05	0-2	-2	2	0	0	0	0.0000
0- Hanson T/5- Loera J/20- Levings K/21- Caldwell S/24- Sanders B/	2	05:22	2	05:12	00:10	0-0	0	0	0	0	0	0.0000
0- Hanson T/2- Simmons J/3- Bosquez G/20- Levings K/22- Walker E/	2	05:12	2	04:06	01:06	0-0	0	2	0	0	0	0.0000
0- Hanson T/2- Simmons J/3- Bosquez G/22- Walker E/43- Greenslade I/	2	04:06	2	03:42	00:24	2-0	2	1	0	0	0	2.2727
0- Hanson T/3- Bosquez G/21- Caldwell S/22- Walker E/43- Greenslade I/	2	03:42	2	03:21	00:21	2-0	2	0	0	0	0	1.5152
0- Hanson T/5- Loera J/21- Caldwell S/24- Sanders B/43- Greenslade I/	2	03:21	2	00:12	03:08	2-2	0	3	0	1	0	0.6667
2- Simmons J/5- Loera J/11- Erikstrup S/20- Levings K/22- Walker E/	2	00:12	3	10:00	00:13	0-0	0	0	0	0	0	0.0000
0- Hanson T/2- Simmons J/5- Loera J/13- Besselink M/20- Levings K/	3	10:00	3	06:53	03:07	2-2	0	3	3	2	0	0.4000
2- Simmons J/3- Bosquez G/11- Erikstrup S/22- Walker E/24- Sanders B/	3	06:53	3	06:21	00:32	1-2	-1	1	0	0	0	1.1364
3- Bosquez G/11- Erikstrup S/21- Caldwell S/22- Walker E/24- Sanders B/	3	06:21	3	05:41	00:40	0-1	-1	0	0	1	0	0.0000
0- Hanson T/2- Simmons J/5- Loera J/13- Besselink M/20- Levings K/	3	05:41	3	04:57	00:44	0-0	0	0	1	1	0	0.0000
0- Hanson T/2- Simmons J/3- Bosquez G/13- Besselink M/20- Levings K/	3	04:57	3	03:05	01:52	6-2	4	1	1	0	1	2.0833
0- Hanson T/2- Simmons J/20- Levings K/21- Caldwell S/22- Walker E/	3	03:05	3	02:04	01:01	3-0	3	1	0	0	0	3.0000
0- Hanson T/5- Loera J/13- Besselink M/21- Caldwell S/22- Walker E/	3	02:04	3	00:56	01:07	0-4	-4	3	0	2	0	0.0000
2- Simmons J/11- Erikstrup S/20- Levings K/21- Caldwell S/24- Sanders B/	3	00:56	3	00:30	00:26	0-2	-2	0	0	0	0	0.0000
0- Hanson T/2- Simmons J/11- Erikstrup S/20- Levings K/24- Sanders B/	3	00:30	4	09:15	01:16	0-2	-2	0	0	0	0	0.0000
0- Hanson T/2- Simmons J/13- Besselink M/21- Caldwell S/22- Walker E/	4	09:15	4	07:19	01:56	7-4	3	2	0	0	2	2.3333
0- Hanson T/2- Simmons J/20- Levings K/21- Caldwell S/22- Walker E/	4	07:19	4	05:45	01:34	2-2	0	2	1	2	1	0.6667
0- Hanson T/2- Simmons J/13- Besselink M/20- Levings K/21- Caldwell S/	4	05:45	4	05:00	00:45	0-0	0	0	1	0	0	0.0000
0- Hanson T/2- Simmons J/5- Loera J/13- Besselink M/20- Levings K/	4	05:00	4	04:33	00:27	3-0	3	0	0	0	1	3.0000
0- Hanson T/2- Simmons J/5- Loera J/13- Besselink M/24- Sanders B/	4	04:33	4	03:50	00:43	0-0	0	0	0	0	0	0.0000
0- Hanson T/2- Simmons J/5- Loera J/13- Besselink M/20- Levings K/	4	03:50	4	03:27	00:23	0-1	-1	1	0	0	0	0.0000
0- Hanson T/2- Simmons J/5- Loera J/20- Levings K/22- Walker E/	4	03:27	4	02:21	01:06	5-0	5	1	1	0	1	1.7361
0- Hanson T/2- Simmons J/5- Loera J/13- Besselink M/20- Levings K/	4	02:21	4	00:22	01:59	2-3	-1	3	0	1	1	0.5000
0- Hanson T/2- Simmons J/5- Loera J/20- Levings K/22- Walker E/	4	00:22	4	00:00	00:22	0-2	-2	0	0	0	0	0.0000



Southern Utah at Arizona St.

02/08/21 Desert Financial Arena, Tempe
2020-21 Women's Basketball

Officials: Melissa Barlow, Julie Krommenhoek, Kaili Kimura

Southern Utah

Lineup	Time	Score	Score Diff	Pts/Min	Reb	Stl	Tov	Ass	PPP
2- Satini M/ 10- Graves L/ 15- Daugherty C/ 21- Eaton M/ 40- Frandsen D/	07:37	2-7	-5	0.2626	9	0	7	0	0.1667
15- Daugherty C/ 21- Eaton M/ 23- Barrington K/ 24- Ballena D/ 40- Frandsen D/	07:06	8-7	1	1.1268	6	3	5	2	0.5952
10- Graves L/ 15- Daugherty C/ 21- Eaton M/ 24- Ballena D/ 40- Frandsen D/	05:37	14-8	6	2.4926	2	0	0	1	1.7327
11- Kamps M/ 14- Thornberry P/ 15- Daugherty C/ 21- Eaton M/ 24- Ballena D/	03:08	2-4	-2	0.6383	2	1	0	1	0.6667
2- Satini M/ 15- Daugherty C/ 21- Eaton M/ 23- Barrington K/ 40- Frandsen D/	02:47	5-3	2	1.7964	1	0	1	0	1.2887
11- Kamps M/ 21- Eaton M/ 23- Barrington K/ 24- Ballena D/ 34- Johnston S/	02:43	2-9	-7	0.7362	2	0	1	1	0.6667
15- Daugherty C/ 21- Eaton M/ 23- Barrington K/ 34- Johnston S/ 40- Frandsen D/	02:39	1-8	-7	0.3774	3	0	1	0	0.3472
2- Satini M/ 11- Kamps M/ 14- Thornberry P/ 21- Eaton M/ 24- Ballena D/	01:57	2-4	-2	1.0256	1	0	3	1	0.5000
10- Graves L/ 15- Daugherty C/ 21- Eaton M/ 24- Ballena D/ 32- Black R/	01:42	2-3	-1	1.1765	1	0	0	1	2.0000
10- Graves L/ 11- Kamps M/ 15- Daugherty C/ 21- Eaton M/ 34- Johnston S/	01:07	4-0	4	3.5821	1	1	0	1	2.1277
11- Kamps M/ 15- Daugherty C/ 21- Eaton M/ 24- Ballena D/ 40- Frandsen D/	00:55	0-0	0	0.0000	2	0	0	0	0.0000
2- Satini M/ 14- Thornberry P/ 21- Eaton M/ 23- Barrington K/ 24- Ballena D/	00:47	0-0	0	0.0000	1	0	1	0	0.0000
2- Satini M/ 11- Kamps M/ 14- Thornberry P/ 15- Daugherty C/ 24- Ballena D/	00:45	0-2	-2	0.0000	0	0	0	0	0.0000
10- Graves L/ 15- Daugherty C/ 21- Eaton M/ 32- Black R/ 34- Johnston S/	00:26	2-0	2	4.6154	0	0	0	0	2.2727
2- Satini M/ 11- Kamps M/ 15- Daugherty C/ 24- Ballena D/ 40- Frandsen D/	00:21	0-0	0	0.0000	0	0	0	0	0.0000
11- Kamps M/ 15- Daugherty C/ 21- Eaton M/ 23- Barrington K/ 24- Ballena D/	00:13	0-0	0	0.0000	1	0	0	0	0.0000
21- Eaton M/ 23- Barrington K/ 24- Ballena D/ 34- Johnston S/ 40- Frandsen D/	00:10	0-0	0	0.0000	0	0	0	0	0.0000



Southern Utah at Arizona St.

02/08/21 Desert Financial Arena, Tempe
2020-21 Women's Basketball

Officials: Melissa Barlow, Julie Krommenhoek, Kaili Kimura

Arizona St.

Lineup	Time	Score	Score Diff	Pts/Min	Reb	Stl	Tov	Ass	PPP
0- Hanson T/ 2- Simmons J/ 5- Loera J/ 13- Besselink M/ 20- Levings K/	09:30	9-6	3	0.9474	10	4	4	2	0.5625
0- Hanson T/ 2- Simmons J/ 3- Bosquez G/ 13- Besselink M/ 20- Levings K/	03:31	8-4	4	2.2749	1	2	0	1	1.6393
0- Hanson T/ 5- Loera J/ 21- Caldwell S/ 24- Sanders B/ 43- Greenslade I/	03:08	2-2	0	0.6383	3	0	1	0	0.6667
0- Hanson T/ 2- Simmons J/ 20- Levings K/ 21- Caldwell S/ 22- Walker E/	02:35	5-2	3	1.9355	3	1	2	1	1.2500
3- Bosquez G/ 11- Erikstrup S/ 21- Caldwell S/ 22- Walker E/ 24- Sanders B/	02:10	3-4	-1	1.3846	0	1	2	1	0.7500
0- Hanson T/ 2- Simmons J/ 5- Loera J/ 13- Besselink M/ 43- Greenslade I/	02:01	2-5	-3	0.9917	2	1	0	0	0.6944
0- Hanson T/ 2- Simmons J/ 13- Besselink M/ 21- Caldwell S/ 22- Walker E/	01:56	7-4	3	3.6207	2	0	0	2	2.3333
0- Hanson T/ 3- Bosquez G/ 21- Caldwell S/ 22- Walker E/ 24- Sanders B/	01:40	3-0	3	1.8000	3	2	0	0	1.5957
0- Hanson T/ 2- Simmons J/ 5- Loera J/ 20- Levings K/ 22- Walker E/	01:28	5-2	3	3.4091	1	1	0	1	1.7361
0- Hanson T/ 2- Simmons J/ 3- Bosquez G/ 20- Levings K/ 22- Walker E/	01:24	0-0	0	0.0000	2	0	0	0	0.0000
0- Hanson T/ 2- Simmons J/ 11- Erikstrup S/ 20- Levings K/ 24- Sanders B/	01:16	0-2	-2	0.0000	0	0	0	0	0.0000
0- Hanson T/ 5- Loera J/ 13- Besselink M/ 21- Caldwell S/ 22- Walker E/	01:07	0-4	-4	0.0000	3	0	2	0	0.0000
0- Hanson T/ 5- Loera J/ 21- Caldwell S/ 22- Walker E/ 24- Sanders B/	01:05	0-2	-2	0.0000	2	0	0	0	0.0000
0- Hanson T/ 3- Bosquez G/ 20- Levings K/ 21- Caldwell S/ 22- Walker E/	00:47	2-0	2	2.5532	0	1	0	0	1.0638
0- Hanson T/ 2- Simmons J/ 13- Besselink M/ 20- Levings K/ 21- Caldwell S/	00:45	0-0	0	0.0000	0	1	0	0	0.0000
0- Hanson T/ 2- Simmons J/ 5- Loera J/ 13- Besselink M/ 24- Sanders B/	00:43	0-0	0	0.0000	0	0	0	0	0.0000
2- Simmons J/ 11- Erikstrup S/ 21- Caldwell S/ 22- Walker E/ 24- Sanders B/	00:37	2-1	1	3.2432	0	0	0	0	2.0000
2- Simmons J/ 5- Loera J/ 11- Erikstrup S/ 13- Besselink M/ 20- Levings K/	00:36	0-0	0	0.0000	1	0	1	0	0.0000
2- Simmons J/ 5- Loera J/ 11- Erikstrup S/ 22- Walker E/ 24- Sanders B/	00:36	2-0	2	3.3333	1	0	0	1	2.0000
2- Simmons J/ 3- Bosquez G/ 11- Erikstrup S/ 22- Walker E/ 24- Sanders B/	00:32	1-2	-1	1.8750	1	0	0	0	1.1364
2- Simmons J/ 11- Erikstrup S/ 13- Besselink M/ 21- Caldwell S/ 24- Sanders B/	00:26	0-2	-2	0.0000	0	0	1	0	0.0000
2- Simmons J/ 11- Erikstrup S/ 20- Levings K/ 21- Caldwell S/ 24- Sanders B/	00:26	0-2	-2	0.0000	0	0	0	0	0.0000
0- Hanson T/ 2- Simmons J/ 3- Bosquez G/ 22- Walker E/ 43- Greenslade I/	00:24	2-0	2	5.0000	1	0	0	0	2.2727
0- Hanson T/ 3- Bosquez G/ 21- Caldwell S/ 22- Walker E/ 43- Greenslade I/	00:21	2-0	2	5.7143	0	0	0	0	1.5152
2- Simmons J/ 5- Loera J/ 11- Erikstrup S/ 13- Besselink M/ 43- Greenslade I/	00:18	0-0	0	0.0000	0	0	0	0	0.0000
5- Loera J/ 11- Erikstrup S/ 21- Caldwell S/ 22- Walker E/ 24- Sanders B/	00:15	0-0	0	0.0000	0	0	0	0	0.0000
2- Simmons J/ 5- Loera J/ 11- Erikstrup S/ 20- Levings K/ 22- Walker E/	00:13	0-0	0	0.0000	0	0	0	0	0.0000
0- Hanson T/ 5- Loera J/ 20- Levings K/ 21- Caldwell S/ 24- Sanders B/	00:10	0-0	0	0.0000	0	0	0	0	0.0000
2- Simmons J/ 5- Loera J/ 21- Caldwell S/ 22- Walker E/ 24- Sanders B/	00:00	0-0	0	NaN	0	0	0	0	0.0000