

CAA WOMEN'S BASKETBALL

Colonial Athletic Association

Weekly Report • November 21, 2016

College of Charleston • Delaware • Drexel • Elon • Hofstra • James Madison • UNCW • Northeastern • Towson • William & Mary

2016-17 CAA WOMEN'S BASKETBALL STANDINGS

	Conference						Overall						
	W	L	Pct.	H	A	Stk.	W	L	Pct.	H	A	N	Stk.
DELAWARE	0	0	.000	0-0	0-0	--	3	0	1.000	2-0	1-0	0-0	W3
TOWSON	0	0	.000	0-0	0-0	--	3	0	1.000	2-0	1-0	0-0	W3
ELON	0	0	.000	0-0	0-0	--	3	1	.750	1-0	1-1	1-0	W3
DREXEL	0	0	.000	0-0	0-0	--	2	1	.667	2-0	0-1	0-0	L1
HOFSTRA	0	0	.000	0-0	0-0	--	2	1	.667	1-0	1-1	0-0	L1
UNCW	0	0	.000	0-0	0-0	--	2	1	.667	1-0	1-1	0-0	W1
WILLIAM & MARY	0	0	.000	0-0	0-0	--	2	1	.667	1-1	1-0	0-0	W2
JAMES MADISON	0	0	.000	0-0	0-0	--	2	2	.500	1-2	1-0	0-0	L1
NORTHEASTERN	0	0	.000	0-0	0-0	--	2	2	.500	1-1	1-1	0-0	L2
CHARLESTON	0	0	.000	0-0	0-0	--	1	2	.333	0-1	1-1	0-0	L1

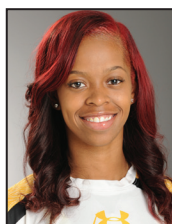
UPCOMING GAMES

November 21	
¹¹ Syracuse at Drexel	7:00 p.m.
November 22	
Virginia Tech at Charleston	6:30 p.m.
Princeton at Delaware	7:00 p.m.
Bucknell at Elon	7:00 p.m.
Delaware State at Hofstra	7:00 p.m.
Towson at UMBC	7:00 p.m.
William & Mary at South Carolina Upstate	7:00 p.m.
November 24	
Northeastern vs. ¹¹ Stanford (Cancun Challenge)	11:00 a.m.
James Madison vs. Idaho State (Cancun Challenge)	6:30 p.m.
November 25	
Northeastern vs. Purdue (Cancun Challenge)	1:30 p.m.
Hofstra at Sacramento State	5:00 p.m.
Delaware vs. ²⁴ Michigan St. (CSUN Thanksgiving Classic)	8:00 p.m.
James Madison vs. Iowa (Cancun Challenge)	9:00 p.m.
November 26	
Northeastern vs. Wichita State (Cancun Challenge)	11:00 a.m.
Wake Forest at Elon	2:00 p.m.
Providence at UNCW (UNCW Thanksgiving Classic)	2:00 p.m.
Delaware vs. CSUN/Detroit (CSUN Thanksgiving Classic)	TBA
November 27	
Charleston at Appalachian State	2:00 p.m.
Drexel at Bucknell	2:00 p.m.
La Salle at UNCW (UNCW Thanksgiving Classic)	2:00 p.m.
George Mason at Towson	2:00 p.m.
Hofstra at UC Davis	4:00 p.m.

RECENT RESULTS

November 19	
Cornell 63, Towson 68	
Charleston 47, ^{RWRV} NC State 91	
Elon 71, Central Michigan 57 (Preseason WNIT)	
St. Bonaventure 40, Delaware 43	
November 20	
James Madison 64, ^{12/12} Florida State 84	
Northeastern 59, Quinnipiac 76	
William & Mary 69, Old Dominion 58	
UNCW 72, Georgia State 66	

#CAAHOOPS PLAYER OF THE WEEK



RAVEN BANKSTON
Senior | Guard | Detroit, Mich.
Towson University



Towson senior Raven Bankston averaged 23.0 points, 6.5 rebounds and 5.0 steals per game as the Tigers picked up a pair of wins last week. Bankston was incredibly effective shooting the ball, connecting 60.7 percent of the time from the field, including 50 percent from three-point land, and shot 81.8 percent from the foul line. In Thursday's win at Wagner, Bankston contributed a team-high 16 points, on 70 percent shooting, six rebounds and tied her career-high with seven steals. Bankston's seven steals helped the Tigers to hold Wagner to 40 points, it was the lowest point total that the Tigers held an opponent to since 2009. In the Tigers' win over Cornell, Bankston posted her second 30-point performance of the season. After Cornell took a three-point lead late in the third quarter, Bankston scored 16 of Towson's final 21 points in the game to secure the victory. Bankston was 10-for-18 from the field (.556) and hit two three-pointers in the game. She was also a season-best 8-for-9 from the foul line. Bankston corralled a season-high seven rebounds to go along with two assists and three steals to help Towson get off to its best start since 2012-13.

#CAAHOOPS ROOKIE OF THE WEEK



JADA GRAVES
Freshman | Guard | Alexandria, Va.
Elon University



Rookie Jada Graves helped Elon to a 3-0 week by averaging 12.7 points and 4.0 rebounds per game off the bench. She shot 54.2 percent from the floor and 63.6 from three-point range in the Phoenix win over Big Ten foe Rutgers and in a pair of Preseason WNIT victories. She opened the week with five points and four rebounds against Rutgers, then delivered 13 points and four boards against Eastern Washington. She wrapped up the week with 20 points against Central Michigan, becoming the first Elon rookie to score 20 or more points in a game since Shay Burnett did so on March 1, 2015.

Contact: Kelly McCarthy • (804) 525-1430 • kmccarthy@caasports.com

CAASports.com • Twitter: @CAABasketball • Instagram: @CAASports • Snapchat: CAASports • Facebook: CAASports • YouTube: CAASportsProductions • CAA.TV

CAA Weekly Awards

PLAYERS OF THE WEEK

Nov. 14	Precious Hall, (G), JMU
Nov. 21	Raven Bankston (G), Towson
Nov. 28	
Dec. 5	
Dec. 12	
Dec. 19	
Dec. 26	
Jan. 2	
Jan. 9	
Jan. 16	
Jan. 23	
Jan. 30	
Feb. 6	
Feb. 13	
Feb. 20	
Feb. 27	
Mar. 6	

ROOKIES OF THE WEEK

Nov. 14	Kamiah Smalls (G), JMU
Nov. 21	Jada Graves (G), Elon
Nov. 28	
Dec. 5	
Dec. 12	
Dec. 19	
Dec. 26	
Jan. 2	
Jan. 9	
Jan. 16	
Jan. 23	
Jan. 30	
Feb. 6	
Feb. 13	
Feb. 20	
Feb. 27	
Mar. 6	

2016-17 PREDICTED ORDER OF FINISH

1.	James Madison	76 (7)
2.	Elon	70 (2)
3.	Drexel	68 (1)
4.	Hofstra	49
T-5.	Delaware	47
T-5.	William & Mary	47
7.	Northeastern	41
8.	College of Charleston	19
9.	UNCW	17
10.	Towson	16

PRESEASON ALL-CAA FIRST TEAM

Bre Bolden, CofC	Sr.	G/F
Shay Burnett, Elon	Jr.	G
Sarah Curran, Drexel	Sr.	F
Ashunae Durant, Hofstra	Jr.	F
Precious Hall, JMU	R-Sr.	G

PRESEASON ALL-CAA SECOND TEAM

Raven Bankston, Towson	Sr.	G
Erika Brown, Delaware	Jr.	G
Da'Lishia Griffin, JMU	Sr.	F
Alexandra Masaquel, W&M	Sr.	F
Marlena Tremba, W&M	Sr.	G

PRESEASON HONORABLE MENTION

Kayla Cooper-Williams, JMU	So.	C
Jess Genco, Northeastern	So.	G
Jessica Pellechio, Drexel	Sr.	G
Abby Rendle, W&M	Jr.	C
Jenifer Rhodes, Elon	Sr.	F
Jasmine Steele, UNCW	R-Sr.	G

PRESEASON PLAYER OF THE YEAR

Precious Hall, James Madison

#CAAHOOPS REWIND

- **College of Charleston (1-2):** The Cougars went 1-1 last week, picking up an impressive 95-64 victory over Winthrop before falling at NC State. **Bre Bolden** continued her torrid start, averaging 19.5 points, 7.5 rebounds, 4.0 steals, and 3.0 assists per game. She led CofC with 22 points against Winthrop and a double-double (17pts, 12reb) at NC State.
- **Delaware (3-0):** The Blue Hens remained undefeated by picking up a pair of wins in two closely contest games. Delaware edged American, 56-55, in overtime, and fought off St. Bonaventure for a 43-40 win. **Nicole Enabosi** averaged a double-double (12.5ppg, 10.5rpg) and went 10-of-13 at the line.
- **Drexel (2-1):** The Dragons had one contest last week, a tough 73-63 loss at Vanderbilt. **Sarah Curran** tallied 19 points while **Jessica Pellechio** contributed 18 points.
- **Elon (3-1):** The Phoenix went 3-0 on the week, picking up a 66-54 win over Big Ten foe Rutgers before sweeping Preseason WNIT action with a 76-55 win over Eastern Washington and a 71-57 win over Central Michigan. Rookie **Jada Graves** shot 54.2 percent from the floor and averaged 12.7 points and 4.0 rebounds per game off the bench. Junior **Shay Burnett** added 12.0 points, 5.3 rebounds and 3.6 assists.
- **Hofstra (2-1):** The Pride split road games last week, topping Stony Brook, 67-64, before falling at Navy. Junior **Ashunae Durant** averaged a double-double (17.5ppg, 10.5rpg).
- **James Madison (2-2):** The Dukes split games, rolling over Liberty, 62-48, before falling at No. 12/12 Florida State. **Precious Hall** averaged 22.0 points for the week, including 27 against the Seminoles.
- **UNCW (2-1):** The Seahawks went 1-1, bouncing back from a loss at East Carolina with a 72-66 win at Georgia State. Rookie **Timber Tate** averaged 11.5 points and shot 7-for-15 from three-point range, including a season-high 14 points at Georgia State.
- **Northeastern (2-2):** The Huskies had a pair of tough losses to Saint Mary's (Calif.) and Quinnipiac. Senior **Francesca Sally** averaged 16.0 points and 8.0 rebounds for the week while **Jess Genco** averaged 10.5 points, 4.0 rebounds and 4.0 assists per game.
- **Towson (3-0):** The Tigers are off to their best start in four years after notching victories over Wagner (69-40) and Cornell (68-63) last week. Raven Bankston averaged 23.0 points while Sianni Martin added 13.0 points per game and Jordyn Smith grabbed 6.5 boards per contest.
- **William & Mary (2-1):** The Tribe rolled over a pair of local rivals last week, trouncing Richmond, 67-39, before downing Old Dominion, 69-58, on the road. Sophomore **Bianca Boggs** averaged 14.5 points, including a career-high 18 points at ODU, and 6.0 rebounds. She also went 11-for-12 from the stripe. Freshman **Victoria Reynolds** continued her strong start and is averaging 8.7 points and 3.7 boards this season.

THANKSGIVING TOURNAMENT TIME

- Northeastern and James Madison are both competing at the 2016 Cancun Challenge in Puerto Aventuras, Mexico, November 24-26.
- The Dukes will face Idaho State and Iowa as part of the Riviera Division in pre-set matchups. Davidson, Toledo and UCLA comprise the rest of the division. JMU will be making its fourth trip to the tournament (2008, 2010, 2012).
- Northeastern will play in the tournament's Mayan Division along with Stanford, Purdue, and Wichita State. The Huskies will play three round-robin games against those opponents in their first-ever trip to the Cancun Challenge.
- The annual UNCW Hampton Inn Thanksgiving Classic will be held November 26-27. The Seahawks take on Providence and La Salle while also welcoming Miami (Ohio) to Trask Coliseum.
- Delaware heads to the West Coast for the Cal State Northridge Thanksgiving Tournament. The Blue Hens take on Michigan State on November 25, followed by either the host Matadors or Detroit on November 26.

HOT SHOTS AROUND #CAAHOOPS

- Four teams are averaging more than 10 steals per game. Towson and CofC lead the way with 13.0 steals per contest.
- JMU's **Precious Hall** eclipsed the 1,600 point mark in the Dukes loss at Florida State. She's posted double-digits in all four games this season.
- Delaware held St. Bonaventure to 10 points in the first half and to just 40 for the game on November. It was the lowest allowed by Delaware since a 70-38 win over Georgia State on January 31, 2013.
- Towson held Wagner to 40 points on November 17. It was the lowest point total that the Tigers held an opponent to since 2009.
- Towson senior **Raven Bankston** and teammate **Sianni Martin** have scored in double figures in all three games.
- Elon has posted two victories over teams that reached the national postseason a year ago as both Rutgers and Central Michigan reached the WNIT last season.
- In its last three games, Elon has led by an average of 14.3 points at halftime. The Phoenix has maintained that double-digit advantage in each contest, winning all three by an average of 15.7 points.
- James Madison announced that 2015 CAA Rookie of the Year and All-CAA center **Kayla Cooper-Williams** will miss the entirety of the season after tearing her ACL during an exhibition game. This is the second straight season in which JMU has lost one of their top players to a season-ending injury.
- CofC senior **Bre Bolden** picked up her 243rd career steal against Charlotte to set the Cougar career record. Bolden is the CAA's career active leader with 251 steals.
- Drexel went 22-for-22 from the free throw line against Penn State on November 11. The percentage tied the CAA single record, but the Dragons are the only team to go 22-for-22 at the line.

#CAAHOOPS IN NON-CONFERENCE PLAY

- The CAA is 22-11 in non-league play.
- From November 14-20, the CAA went 13-7, notching victories over 11 different conferences, including the a win over the Big Ten and pairs of wins over the A-10 and Big South.
- Collectively, the CAA is averaging 67.0 points per game and holding opponents to 61.5 points per game.
- The CAA is 3-0 against the A-10 this year.
- The CAA is also 2-0 against the Big South and the Big Ten.
- The CAA went a combined 61-56 against non-conference opponents in 2015-16.

SOLID STARTS

- Delaware is off to a 3-0 start the year for the first time since 2010-11 when Elena Delle Donne led team went 31-2 after a 10-0 start.
- Towson is off to a 3-0 start for the first time since 2012-13. It's the seventh time in program history in which the Tigers have won three straight to start a season.
- For the second straight year, Northeastern got off to a 2-0 start.

THE BIG 3-0

- Three players registered 30-point efforts this season.
- Towson's **Raven Bankston** posted 31 points in the 90-56 win over UMass Lowell and then delivered 30 points in the 68-63 win over Cornell.
- Bankston is the first Tiger to have two 30+ point games in a season since Tanisha McTiller in 2013.
- JMU's **Precious Hall**, the CAA Preseason Player of the Year, poured in 39 points in the loss to No. 13/14 Tennessee.
- Drexel's **Jessica Pellechio** dropped in a career-high 30 points, including eight three-pointers, in the 83-60 win against Penn State.

HOME SWEET HOME

- The CAA is 12-4 at home so far this season.
- With Lil Wayne performing on November 19 in SECU Arena, Towson hosted Cornell at the Towson Center, the first official basketball competition in the Arena since March 3, 2013.
- James Madison had its 16-game home win streak snapped by No. 13/14 Tennessee on November 11.
- The Dukes have welcomed 2,000+ fans to the Convocation Center in 41 consecutive games.
- In six seasons under Head Coach **Charlotte Smith**, the Phoenix is 54-18 at Alumni Gym and have never lost more than five home games in a single season.
- Collectively, CAA teams went 85-54 at home in 2015-16. In non-league play, the CAA was 35-15 at home last season.

TIP-OFF TIME

- The CAA went a combined 9-4 on opening weekend.
- The 2016-17 season tipped off on November 11 with seven games, six of which were home games. The CAA went 5-2 in those contests, including 5-1 at home.

#CAAHOOPS IN THE PRESEASON WNIT

Elon was the CAA's representative in the 2016 Pre-season WNIT.

- The Phoenix drew a road game at Green Bay in the first round on November 11, falling 74-53.
- Elon traveled to Mount Pleasant, Mich. for the consolation rounds.
- In their first consolation game on November 18, the Phoenix downed Eastern Washington, 76-55, behind three double-digit scoring efforts.
- Elon closed out action by knocking off host Central Michigan, 71-57. The Phoenix was led by rookie **Jada Graves'** 20-point night.
- Elon is one of 16 teams that was selected to participate in the field: Abilene Christian (Southland); Central Michigan (MAC); Colorado State (MWC); Eastern Washington (Big Sky); Fordham (Atlantic 10); Furman (Southern); Green Bay (Horizon); Little Rock (Sun Belt); Missouri (SEC); Nebraska (Big Ten); North Texas (C-USA); Notre Dame (ACC); Omaha (Summit); UT-Rio Grande Valley (WAC); and Washington (Pac-12).
- Last season, Drexel represented the CAA in the Preseason WNIT, advancing to the second round after defeating Dartmouth. Drexel fell at No. 19/20 South Florida in the second round, but posted a victory at home over St. Bonaventure in the consolation bracket.
- Since 1997, CAA teams are 15-16 in Preseason WNIT action.

LIEBERMAN AWARD WATCH LIST

- Drexel senior point guard **Meghan Creighton** was named one of 20 watch list candidates for the 2017 Nancy Lieberman Award.
- Creighton, who has started every game for which she has been in uniform since arriving on campus in 2012, comes into the 2016-17 season with 437 career assists. Last season, she dished out 184 assists - one shy of the single-season top mark in Drexel history. She was also fifth in the nation in assist-turnover ratio (3.23).
- Now in its 17th year, the Nancy Lieberman Award recognizes the top point guard in women's NCAA Division I college basketball. Candidates exhibit the floor leadership, play-making and ball-handling skills of Hall of Famer Nancy Lieberman.
- The Selection Committee for the Nancy Lieberman Award is composed of top women's college basketball personnel including media members, head coaches, sports information directors and Hall of Famers. By mid-February, the watch list of 20 players for the 2017 Lieberman Award will be narrowed to just 10. In March, five finalists will be presented to Ms. Lieberman and the Hall of Fame's selection committee. The winner of the 2017 Lieberman Award will be announced at the NCAA Women's Final Four in Dallas, Texas.

DOUBLE-DIGIT STREAKS

Scoring (min. 5 gms)

Francesca Sally (NU)

8 games

Rebounding (min. 2 gms)

STELLAR GAMES

Double-Doubles

Tanisha Brown (COFC)	2
Francesca Sally (NU)	1
Bre Bolden (COFC)	1
Tasia Butler (JMU)	1
Jenny DeGraaf (UNCW)	1
Ashunae Durant (HOF)	1
Nicole Enabosi (UD)	1
Kamiah Smalls (JMU)	1

10+ Rebound Game Leaders

Tanisha Brown (COFC)	2
Jenny DeGraaf (UNCW)	1
Francesca Sally (NU)	1
Rebekah Banks (UNCW)	1
Bre Bolden (COFC)	1
Tasia Butler (JMU)	1
Ashunae Durant (HOF)	1
Nicole Enabosi (UD)	1
Sydni Epps (HOF)	1
Savannah Felgemacher (JMU)	1
Jenifer Rhodes (ELON)	1
Kamiah Smalls (JMU)	1

20+ Rebound Game Leaders

20+ Point Game Leaders

Precious Hall (JMU)	3
Raven Bankston (TOW)	2
Bre Bolden (COFC)	1
Shay Burnett (ELON)	1
Ashunae Durant (HOF)	1
Jess Genco (NU)	1
Jada Graves (ELON)	1
Sianni Martin (TOW)	1
Jessica Pellechio (DREX)	1
Francesca Sally (NU)	1

30+ Point Game Leaders

Raven Bankston (TOW)	2
Precious Hall (JMU)	1
Jessica Pellechio (DREX)	1

10+ Assist Game Leaders

10+ Block Game Leaders

INDIVIDUAL GAME HIGHS

Points

Precious Hall (JMU) vs Tennessee (11/11)	39
Raven Bankston (TOW) vs UMass Lowell (11/11)	31
Jessica Pellechio (DREX) vs PENN STATE (11/11)	30
Raven Bankston (TOW) vs Cornell (11/19)	30

Field Goals Made

Precious Hall (JMU) vs Tennessee (11/11)	15
Raven Bankston (TOW) vs UMass Lowell (11/11)	11

Field Goal Attempts

Precious Hall (JMU) vs Tennessee (11/11)	35
Precious Hall (JMU) at Florida State (11/20)	28

Field Goal Pct.

Tanisha Brown (COFC) at Winthrop (11/16)	.800 (8-10)
Jess Genco (NU) vs Boston Univ. (11/11)	.750 (9-12)
Raven Bankston (TOW) vs UMass Lowell (11/11)	.733 (11-15)

3pt Field Goals Made

Jessica Pellechio (DREX) vs Penn State (11/11)	8
Precious Hall (JMU) vs Tennessee (11/11)	7
Jess Genco (NU) vs Boston University (11/11)	7

3pt Field Goal Attempts

Jessica Pellechio (DREX) vs Penn State (11/11)	15
Jessica Pellechio (DREX) at Vanderbilt (11/16)	15

3pt Field Goal Pct.

Jess Genco (NU) vs Boston University (11/11)	.778 (7-9)
Raven Bankston (TOW) vs UMass Lowell (11/11)	.625 (5-8)

Free Throws Made

Nicole Enabosi (UD) vs St. Bonaventure (11/19)	9
Raven Bankston (TOW) vs Cornell (11/19)	8

Free Throw Attempts

Nicole Enabosi (UD) vs St. Bonaventure (11/19)	12
Ashunae Durant (HOF) vs Marist (11/11)	11

Free Throw Pct. (min. 8 made)

Raven Bankston (TOW) vs Cornell (11/19)	.889 (8-9)
Nicole Enabosi (UD) vs St. Bona. (11/19)	.750 (9-12)

Rebounds

Jenny DeGraaf (UNCW) vs Norfolk State (11/11)	15
Jenifer Rhodes (ELON) at Green Bay (11/11)	13
Francesca Sally (NU) at Canisius (11/13)	13
Nicole Enabosi (UD) vs St. Bonaventure (11/19)	13

Assists

Jess Genco (NU) at Canisius (11/13)	9
Meghan Creighton (DREX) at Vanderbilt (11/16)	8
Jasmine Steele (UNCW) at Georgia State (11/20)	8

Steals

Bre Bolden (COFC) vs Charlotte (11/13)	8
Alexandra Masaquel (WM) vs St. John's (11/13)	8

Blocks

Ashunae Durant (HOF) at Stony Brook (11/14)	4
Gabby Giacone (NU) at Canisius (11/13)	3
Abby Rendle (WM) vs St. John's (11/13)	3
Abby Rendle (WM) vs Richmond (11/18)	3

#CAAHOOPS TV PACKAGE ON THE ASN

- The CAA Women's Basketball television package features five games on the American Sports Network.
- The package begins on January 15 with Drexel at Elon at 3 p.m.
- Elon, James Madison, and Drexel will be featured twice while Delaware, Hofstra and William & Mary will also make an appearance.
- For the complete women's basketball television second, please see page 7.

HIGH SCORERS RETURN

- The offense in the CAA will be plentiful once again this season as 10 of the top-20 scorers from 2015-16 will be back on the hardwood for their respective teams. Out of that group, seven are seniors, two are juniors, and one is a sophomore.

TOP HONORS RETURN

- Seven of the 15 All-CAA honorees from last year return for the 2016-17 season, including the two-time CAA Defensive Player of the Year, **Bre Bolden** from CofC. The 2014-15 CAA Player of the Year, **Precious Hall** of James Madison, returns for her final season after missing the entirety of 2015-16 with an injury.

#CAAHOOPS PRESEASON RUNDOWN

- James Madison was predicted to finish atop the conference for the fourth consecutive season.
- It was close voting at the top with the Dukes as the overall favorite with 76 points, Elon in second with 70 points and Drexel in third with 68 points.
- It was also close among the next four teams. Hofstra (49) was picked fourth, Delaware and William & Mary were tied for fifth with 47 points apiece while Northeastern was seventh with 41 points. Rounding out the 10 teams were College of Charleston (19), UNCW (17) and Towson (16).
- After missing all of the 2015-16 season with an injury, redshirt senior guard **Precious Hall** is back to lead James Madison and was tabbed as the 2016-17 CAA Preseason Player of the Year. During 2014-15, Hall averaged 20.8 points and 5.1 rebounds per game and was the unanimous choice for CAA Player of the Year.

NCAA STATISTICAL RANKINGS (thru games on 11/20)

NCAA TEAM RANKINGS (Top 25)

Category	Team	Rank	Stat
Fewest Turnovers	Delaware	12	31
Field-Goal Percentage	Towson	17	48.3
Free-Throw Percentage	Drexel	2	89.5
Personal Fouls Per Game	Towson	20	14.3
Scoring Defense	Delaware	15	48.7
Three-Point Field Goals Made	Elon	5	38
Three-Point Field Goals Per Game	Drexel	18	9.7
	Elon	21	9.5
Three-Point Field-Goal Percentage	Towson	17	42.2
Turnover Margin	Drexel	20	9.00
	Towson	26	8.00
Turnovers Forced	Towson	19	24.00
Turnovers Per Game	Delaware	6	10.3

NCAA INDIVIDUAL RANKINGS (Top 25)

Category	Player, Team	Rank	Stat
Double Doubles	Francesca Sally, Northeastern	20	2
	Tanisha Brown, CofC	20	2
Field Goal Attempts	Precious Hall, James Madison	1	109
Field-Goal Percentage	Raven Bankston, Towson	23	65.1
Final Points	Precious Hall, James Madison	3	107
Points Per Game	Precious Hall, James Madison	5	26.8
	Raven Bankston, Towson	8	25.7
Steals	Breanna Bolden, CofC	3	16
	Raven Bankston, Towson	11	14
	Alexandra Masaquel, William & Mary	23	12
Steals Per Game	Breanna Bolden, CofC	1	5.33
	Raven Bankston, Towson	5	4.67
	Alexandra Masaquel, William & Mary	12	4.00
Three-Point Field Goals Attempted	Precious Hall, James Madison	2	47
	Jessica Pellechio, Drexel	6	40
Three-Point Field Goals Made	Precious Hall, James Madison	3	16
	Jess Genco, Northeastern	5	14
	Jessica Pellechio, Drexel	5	14
Three-Point Field Goals Per Game	Jessica Pellechio, Drexel	4	4.67
	Precious Hall, James Madison	11	4.00
	Jess Genco, Northeastern	21	3.50
Three-Point Field-Goal Percentage	Jenny DeGraaf, UNCW	6	66.7
	Jada Graves, Elon	18	61.1

CAA ACTIVE CAREER LEADERS*

transfers are included among the active career leaders. The totals span an entire career at any NCAA Division I institution

SCORING (800+)

Precious Hall, James Madison	1613
Raven Bankston, Towson	1309
Marlena Tremba, William & Mary	1228
Bre Bolden, CofC	1191
Sarah Curran, Drexel	1170
Erika Brown, Delaware	1052
Lauren Brown, Elon	824

Jenifer Rhodes, Elon	797
Shay Burnett, Elon	769
Hannah Jardine, Delaware	769
Meghan Creighton, Drexel	766
Ashunae Durant, Hofstra	761

FIELD GOALS MADE (300+)

Precious Hall, James Madison	547
Raven Bankston, Towson	486
Sarah Curran, Drexel	471
Bre Bolden, CofC	453
Marlena Tremba, William & Mary	384
Erika Brown, Delaware	371
Jenifer Rhodes, Elon	341
Alexandra Masaquel, William & Mary	312
Ashunae Durant, Hofstra	292
Hannah Jardine, Delaware	283

FIELD GOALS PERCENTAGE (MIN 350 MADE)

Sarah Curran, Drexel	.446 (471-1056)
Raven Bankston, Towson	.416 (486-1167)
Bre Bolden, CofC	.387 (453-1172)
Precious Hall, James Madison	.368 (547-1486)
Erika Brown, Delaware	.362 (371-1026)
Marlena Tremba, William & Mary	.360 (384-1068)

3PT FIELD GOALS MADE (100+)

Precious Hall, James Madison	215
Marlena Tremba, William & Mary	215
Meghan Creighton, Drexel	179
Lauren Brown, Elon	114
Krystal Luciano, Hofstra	114
Hannah Jardine, Delaware	101
Sarah Curran, Drexel	95

3PT FIELD GOAL PERCENTAGE (MIN 150 MADE)

Meghan Creighton, Drexel	.358 (179-500)
Precious Hall, James Madison	.339 (215-634)
Marlena Tremba, William & Mary	.333 (215-646)

FREE THROWS MADE (250+)

Precious Hall, James Madison	304
Raven Bankston, Towson	272
Erika Brown, Delaware	261
Shay Burnett, Elon	251

Marlena Tremba, William & Mary	245
Bre Bolden, CofC	243

FREE THROWS PERCENTAGE (MIN 250 MADE)

Precious Hall, James Madison	.800 (304-380)
Raven Bankston, Towson	.788 (272-345)
Shay Burnett, Elon	.772 (251-325)
Erika Brown, Delaware	.711 (261-367)

REBOUNDING (450+)

Bre Bolden, CofC	616
Da'Lishia Griffin, James Madison	528
Ashunae Durant, Hofstra	526
Hannah Jardine, Delaware	479
Jenifer Rhodes, Elon	465
Alexandra Masaquel, William & Mary	458

Precious Hall, James Madison	427
Shay Burnett, Elon	426

BLOCKS (100+)

Abby Rendle, William & Mary	129
Jenifer Rhodes, Elon	105

STEALS (100+)

Bre Bolden, CofC	251
Marlena Tremba, William & Mary	150
Raven Bankston, Towson	142
Precious Hall, James Madison	140
Krystal Luciano, Hofstra	129
Alexandra Masaquel, William & Mary	127
Meghan Creighton, Drexel	102
Essence Baucom, Elon	96
Sarah Curran, Drexel	90

ASSISTS (200+)

Meghan Creighton, Drexel	456
Krystal Luciano, Hofstra	362
Essence Baucom, Elon	289
Marlena Tremba, William & Mary	257
Jenna Green, William & Mary	229
Erika Brown, Delaware	213
Shay Burnett, Elon	212
Precious Hall, James Madison	211

Latrice Hunter, William & Mary	190
Sarah Curran, Drexel	183

GAMES PLAYED (100+)

Meghan Creighton, Drexel	112
Precious Hall, James Madison	108
Krystal Luciano, Hofstra	98
Lauren Brown, Delaware	98

TEAM GAME HIGHS

Points

COFC at Winthrop (11/16)	95
TOWSON vs UMass Lowell (11/11)	90

Margin of Victory

TOWSON vs UMass Lowell (11/11)	34 (90-56)
COFC at Winthrop (11/16)	31 (95-64)

Field Goals Made

COFC at Winthrop (11/16)	38
TOWSON vs UMass Lowell (11/11)	32
NORTHEASTERN at Canisius (11/13)	32

Field Goals Attempts

JAMES MADISON vs St. Francis Brooklyn (11/13)	81
COFC at Winthrop (11/16)	77

Field Goal Pct.

ELON at Central Michigan (11/19)	.528 (28-53)
TOWSON vs UMass Lowell (11/11)	.508 (32-63)

3pt Field Goals Made

ELON at Green Bay (11/11)	12
NORTHEASTERN vs Boston University (11/11)	12
NORTHEASTERN at Canisius (11/13)	12

3pt Field Goal Attempts

DREXEL at Vanderbilt (11/16)	35
ELON at Green Bay (11/11)	31

3pt Field Goal Pct. (min. 10 3FGM)

NORTHEASTERN vs Boston Univ. (11/11)	.500 (12-24)
TOWSON vs UMass Lowell (11/11)	.476 (10-21)
COFC at Winthrop (11/16)	.476 (10-21)

Free Throws Made

JAMES MADISON vs St. Francis Brooklyn (11/13)	25
DREXEL vs Penn State (11/11)	22

Free Throw Attempts

JAMES MADISON vs St. Francis Brooklyn (11/13)	32
ELON vs Eastern Washington (11/18)	27

Free Throw Pct. (min. 10 FTA)

DREXEL vs Penn State (11/11)	1.000 (22-22)
NORTHEASTERN vs Boston Univ. (11/11)	.941 (16-17)

Rebounds

JAMES MADISON vs St. Francis Brooklyn (11/13)	55
ELON vs Rutgers (11/14)	55

Assists

NORTHEASTERN vs Canisius (11/13)	23
DREXEL vs Delaware St. (11/13)	21
COFC at Winthrop (11/16)	21

Steals

COFC at Winthrop (11/16)	19
COFC vs Charlotte (11/13)	16

Blocks

WILLIAM & MARY vs Richmond (11/18)	8
DELAWARE vs George Mason (11/13)	6
NORTHEASTERN vs Canisius (11/13)	6

ASSOCIATED PRESS POLL

(Week 3/November 15)

RK	TEAM	RECORD	PTS
1	Notre Dame (16)	4-0	804
2	Connecticut (16)	3-0	797
3	South Carolina (1)	2-0	755
4	Louisville	5-0	707
5	Baylor	3-1	704
6	Maryland	4-0	665
7	Mississippi State	4-0	614
8	Ohio State	3-1	591
9	UCLA	3-1	533
10	Florida State	3-1	502
11	Stanford	3-1	448
11	Syracuse	3-0	448
13	Oklahoma	3-0	389
14	Texas	1-2	376
15	Washington	3-1	348
16	Florida	3-0	300
17	Tennessee	3-1	257
18	DePaul	3-0	256
19	West Virginia	3-0	214
20	Kentucky	3-1	205
21	Miami	3-1	155
22	Oregon State	3-0	147
23	Arizona State	2-1	98
24	Michigan State	4-0	84
25	Gonzaga	3-0	62

OTHERS RECEIVING VOTES

Auburn 55, Missouri 52, Colorado 41, Indiana 27, Texas A&M 26, Marquette 18, South Dakota State 12, South Florida 8, Green Bay 7, NC State 7, Saint Louis 6, Western Kentucky 3, California 2, Boise State 1, Duke 1

USA TODAY COACHES POLL

(Week 2/November 14)

RK	TEAM	RECORD	PTS
1	Notre Dame (13)	2-0	765
2	Connecticut (13)	1-0	758
3	South Carolina (4)	1-0	748
4	Baylor (2)	2-0	712
5	Maryland	1-0	646
6	Louisville	2-0	630
7	Stanford	2-0	584
8	Ohio State	1-1	548
9	Mississippi State	2-0	521
10	Texas	0-1	507
11	UCLA	1-1	463
12	Florida State	1-1	462
13	Tennessee	2-0	394
14	Syracuse	2-0	382
15	Washington	2-0	343
16	Arizona State	2-0	326
17	Oklahoma	1-0	273
18	Oregon State	2-0	241
19	Kentucky	2-0	233
20	DePaul	2-0	155
21	Michigan State	2-0	126
22	Miami	1-1	107
23	Florida	2-0	97
24	Texas A&M	1-0	82
25	West Virginia	1-0	62

OTHERS RECEIVING VOTES

Indiana 59, Michigan 34, South Dakota State 25, Missouri 22, Duke 16, Auburn 15, South Florida 14, St John's 11, Western Kentucky 6, NC State 5, Oklahoma State 5, Temple 4, California 4, Saint Louis 3, Drake 3, Georgia 3, Green Bay 2, Gonzaga 2, Tulane 1, Georgia Tech 1

COLLEGE INSIDER MID-MAJOR POLL

(November 15)

RK	TEAM	RECORD	PTS
1.	South Dakota State (30)	2-0	774
2.	Green Bay (1)	2-0	743
3.	Gonzaga	2-0	643
4.	Chattanooga	1-1	640
5.	James Madison	1-1	632
6.	BYU	1-0	614
7.	Quinnipiac	2-0	594
8.	Pennsylvania	0-1	518
9.	Ohio	1-0	511
10.	Drake	1-0	429
11.	Florida Gulf Coast	1-1	404
12.	New Mexico State	1-0	377
13.	Long Beach State	2-0	343
14.	Albany	0-2	336
15.	Bucknell	2-0	331
16.	Saint Mary's	0-2	320
17.	Iona	1-0	277
18.	Northern Iowa	1-0	211
19.	Troy	0-1	181
20.	Drexel	2-0	158
21.	San Diego	2-0	140
22.	Central Michigan	0-1	133
23.	Jacksonville	2-0	110
24.	Princeton	0-2	100
25.	Missouri State	1-1	91

OTHERS RECEIVING VOTES

Belmont 69, Mercer 67, South Dakota 67, UC Riverside 57, Maine 29, Abilene Christian 24, St Francis (PA) 23, Idaho 20, Elon 17, Santa Clara 14, Samford 13, Little Rock 11, UT Martin 11, Army 10, Central Arkansas 9, Sacred Heart 6, Stetson 5, UT Arlington 5, Arkansas State 4, Eastern Illinois 2, Bryant 1, UNC Asheville 1.

CAA IN THE ASSOCIATED PRESS POLL & USA TODAY COACHES POLL

	Pre	N14	N21	N28	D5	D12	D19	D26	J2	J9	J16	J23	J30	F6	F13	F20	F27	M6	Final
College of Charleston	--/--	--/--	--/--																
Delaware	--/--	--/--	--/--																
Drexel	--/--	--/--	--/--																
Elon	--/--	--/--	--/--																
Hofstra	--/--	--/--	--/--																
James Madison	--/--	--/--	--/--																
UNCW	--/--	--/--	--/--																
Northeastern	--/--	--/--	--/--																
Towson	--/--	--/--	--/--																
William & Mary	--/--	--/--	--/--																

CAA IN THE COLLEGE INSIDER MID-MAJOR POLL

	Pre	N15	N23	N30	D6	D13	D20	D27	J3	J10	J17	J24	J31	F7	F14	F21	F28	M7	Final
College of Charleston	--	--																	
Delaware	--	--																	
Drexel	25	20																	
Elon	RV	RV																	
Hofstra	--	--																	
James Madison	2	5																	
UNCW	--	--																	
Northeastern	--	--																	
Towson	--	--																	
William & Mary	--	--																	

CAA WOMEN'S BASKETBALL CONTACT INFORMATION

	Contact	Office Phone	Email	The CAA on Twitter			
CAA	Kelly McCarthy	804-525-1430	kmccarthy@caasports.com	@CAASports	@CAABasketball		#CAAHoops
CofC	Chris Chandler	843-953-5465	chandlercw@cofc.edu	@CofCAthletics	@CofCWBasketball	@CofC_CoachJacks	#CofC
Delaware	Maggie Hayon	302-831-6389	mhayon@udel.edu	@UDBluehens	@DelawareWBB	@UDCoachMartin	#BlueHens
Drexel	Sam Angell	215-895-6895	sea65@drexel.edu	@DrexelDragons	@DrexelWBB	@DeniseDillon	#Drexel
Elon	Dan Wyar	336-278-6761	dwyar@elon.edu	@ElonPhoenix	@ElonWBasketball		#Elon
Hofstra	Amanda Ghysel	516-463-6759	Amanda.Ghysel@hofstra.edu	@HofstraPride	@HofstraWBB	@CoachKSteveskey	#Hofstra
JMU	Devon Howard	540-568-3701	howardbd@jmu.edu	@JMUSports	@JMUWBasketball	@CoachBrooksJMU	#JMUdukes
UNCW	Eric Rhew	910-962-3252	rhewe@uncw.edu	@UNCWathletics	@UNCWwomenshoops	@HC_AdellHarris	#UNCW
NU	Mike Skovan	617-373-2691	m.skovan@neu.edu	@GoNUAthletics	@GoNUwbasketball		#GoNU
Towson	Megan O'Brien	410-704-4972	mobrien@towson.edu	@TowsonTigers	@Towson_WBB		#Towson
W&M	Andrew Phillips	757-221-3344	atphillips01@wm.edu	@TribeAthletics	@TribeWBB		#WMTribe

MEDIA SERVICES

CAA RELEASE

The CAA women's basketball release is updated following each day that games are played. CAA standings, team-by-team results, notes, and any statistics will be updated as often as needed based upon the schedule of play. The release will be available via CAASports.com. For more information, contact Kelly McCarthy at kmccarthy@caasports.com.

CAA WEEKLY AWARDS

The CAA names a Player of the Week and a Rookie of the Week each Monday morning during the season. Winners are chosen from the nominations provided by the conference sports information directors. The information will be available from the CAA office via release, social media, and on the official league website.

CAASPORTS.COM

The official website of the Colonial Athletic Association. Visit CAA Basketball Media Central for all of your team info research and check out CAA Basketball Game Day for all your immediate links to live stats, live audio, webstreaming, and final results and recaps.

CAASTATS.COM

CAASports.com is the on-the-go source for CAA scores throughout the regular and postseason. Accessible from any internet connected device, CAASports.com will include live stat information for every "statistic-centric" home competition.

CAA.TV & ROKU

Just in time for the 2016-17 season, CAA.TV, the league's free digital portal, can be accessed on Roku as well as any internet connected device. CAA.tv gives fans access to nearly every live event being contested across the conference. CAA.TV also features rich live stat functionality for nearly every game in the CAA, as well as social media integration which will allow fans to be connected across the conference while watching all the action. Games may be subject to online blackout.

CAA ON THE AIRWAVES

The CAA's television partner, the **American Sports Network (ASN)** will televise five women's contests on affiliate stations throughout the nation during the regular season. ASN is a programming initiative of Sinclair Networks Group, Sinclair Broadcast Group includes 164 television stations and affiliations with all the major networks and reaches approximately 38.2 percent of U.S. television households. Comcast SportsNet will once again televise the semifinals and finals of the CAA Women's Basketball Championship. Comcast Sports Group consists of 11 regional networks that deliver 2,400 sporting events annually to 43 million homes.

CAA SOCIAL

There are a variety of ways fans and media can interact with the CAA.

Twitter.com/CAABasketball

Discover what is happening right now and use **#CAAHoops**

Instagram/CAASports

Tag your photos with **#CAAHoops**

Snapchat/caasports

A behind-the-scenes look at the CAA

Facebook.com/CAASports

Keep up with all CAA releases and videos right on your home page.

YouTube.com/CAASportsProductions

Watch highlights, recaps, promos, and more.

CAA WBB TV SCHEDULE

11/11	Elon at Green Bay <i>ESPN3</i>	8:00 PM
11/13	Northeastern at Canisius <i>ESPN3</i>	7:00 PM
11/14	Hofstra at Stony Brook <i>ESPN3</i>	7:00 PM
11/15	James Madison at Liberty <i>ESPN3</i>	5:00 PM
11/16	Drexel at Vanderbilt <i>SEC Network+/ESPN3</i>	8:00 PM
11/19	Charleston at NC State <i>ACC Network Extra/ESPN3</i>	7:00 PM
11/20	James Madison at Florida State <i>ACC Network Extra/ESPN3</i>	2:00 PM
	UNCW at Georgia State <i>ESPN3</i>	2:00 PM
11/22	William & Mary at USC Upstate <i>ESPN3</i>	7:00 PM
12/4	Hofstra at Buffalo <i>ESPN3</i>	12:00 PM
12/8	Elon at Duke <i>ACC Network Extra/ESPN3</i>	7:00 PM
12/11	UNCW at NC State <i>ACC Network Extra/ESPN3</i>	2:00 PM
12/18	Northeastern at Michigan State <i>Big Ten Network+</i>	12:00 PM
12/21	Elon vs. Akron <i>ESPN3</i>	1:00 PM
12/22	Elon at Georgia State <i>ESPN3</i>	1:00 PM
12/29	UNCW at Tennessee <i>SEC Network+/ESPN3</i>	7:00 PM
1/15	Drexel at Elon <i>American Sports Network (ASN)</i>	3:00 PM
2/12	Elon at James Madison <i>American Sports Network (ASN)</i>	3:00 PM
	Hofstra at Delaware <i>American Sports Network (ASN)</i>	5:00 PM
2/19	Delaware at Drexel <i>American Sports Network (ASN)</i>	3:00 PM
2/26	William & Mary at James Madison <i>American Sports Network (ASN)</i>	5:00 PM
3/10	CAA Women's Championship Semifinal <i>Comcast SportsNet</i>	4:30 PM
	CAA Women's Championship Semifinal <i>Comcast SportsNet</i>	7:00 PM
3/11	CAA Women's Championship Game <i>Comcast SportsNet</i>	7:00 PM

CAA VS. NON-CONFERENCE

<i>CAA vs. All Non-Conference</i>	<i>22-11</i>
CAA vs. ACC	0-2
CAA vs. American	0-1
CAA vs. America East	2-0
CAA vs. A-10	3-0
CAA vs. Atlantic Sun	0-0
CAA vs. Big 12	0-0
CAA vs. Big East	0-1
CAA vs. Big Sky	1-0
CAA vs. Big South	2-0
CAA vs. Big Ten	2-0
CAA vs. Big West	0-0
CAA vs. C-USA	1-1
CAA vs. Horizon League	0-1
CAA vs. Ivy League	1-0
CAA vs. MAAC	2-1
CAA vs. MAC	1-0
CAA vs. MEAC	2-0
CAA vs. Missouri Valley	0-0
CAA vs. Mountain West	0-0
CAA vs. Northeast	2-0
CAA vs. Ohio Valley	0-0
CAA vs. Pac-12	0-0
CAA vs. Patriot League	2-1
CAA vs. SEC	0-2
CAA vs. Southern	0-0
CAA vs. Southland	0-0
CAA vs. Summit	0-0
CAA vs. Sun Belt	1-0
CAA vs. SWAC	0-0
CAA vs. West Coast	0-1
CAA vs. WAC	0-0
CAA vs. Independent	0-0
CAA vs. Non-Division I	0-0

Referring to Us?

Great! We'd appreciate if you would use the proper references listed below.

CAA	Colonial Athletic Association/CAA
College of Charleston	CofC/Cougars
University of Delaware	Delaware/UD/Blue Hens
Drexel University	Drexel/Dragons
Elon University	Elon/Phoenix
Hofstra University	Hofstra/Pride
James Madison University	James Madison/JMU/Dukes
University of North Carolina Wilmington	UNCW/Seahawks
Northeastern University	Northeastern/Huskies
Towson University	Towson/Tigers
The College of William & Mary	William & Mary/W&M/Tribe

COLLEGE OF CHARLESTON
1-2 Overall/0-0 CAA

- CofC recorded the fourth-highest offensive output in the program's DI history with 95 points in the victory against Winthrop.
- The Cougars were picked to finish eighth in the 2015-16 CAA Preseason Poll.
- Senior guard **Bre Bolden** was a 2016-17 Preseason All-CAA First Team selection.
- Bolden became the Cougars career steals leader after swiping eight in the season opener against Charlotte.
- CofC returns three starters from 2015-16.
- The Cougars went 11-20 (5-13 CAA) last season after going 5-25 (3-15 CAA) during Head Coach **Candice M. Jackson's** first season at the helm.
- CofC fell in the quarterfinals of the 2015 CAA Championship to James Madison, 53-50.

2016-17 SCHEDULE & RESULTS

N 13	CHARLOTTE	L, 49-62
N 16	at Winthrop	W, 95-64
N 19	at NC State	L, 47-91
N 22	VIRGINIA TECH	6:30 p.m.
N 27	at Appalachian State	2:00 p.m.
N 30	NORTH FLORIDA	6:30 p.m.
D 04	at Houston	3:00 p.m.
D 16	at Louisville	7:00 p.m.
D 18	at Western Kentucky	3:00 p.m.
D 20	COASTAL CAROLINA	4:00 p.m.
D 22	at Charleston Southern	2:00 p.m.
J 02	at Elon*	7:00 p.m.
J 06	WILLIAM & MARY*	6:30 p.m.
J 08	UNCW*	2:00 p.m.
J 13	ELON*	6:30 p.m.
J 15	at Towson*	2:00 p.m.
J 20	at Drexel*	7:00 p.m.
J 22	at Delaware*	2:00 p.m.
J 27	HOFSTRA*	11:30 a.m.
J 29	at UNCW*	2:00 p.m.
F 03	DREXEL*	6:30 p.m.
F 05	TOWSON*	2:00 p.m.
F 10	at Hofstra*	7:00 p.m.
F 12	at Northeastern*	2:00 p.m.
F 17	at William & Mary*	7:00 p.m.
F 19	JAMES MADISON*	2:00 p.m.
F 24	NORTHEASTERN*	6:30 p.m.
F 26	DELAWARE*	2:00 p.m.
M 01	at James Madison*	7:00 p.m.

* CAA Contest

DELAWARE
3-0 Overall/0-0 CAA

- The Blue Hens got off to a 3-0 start for the first time in seven seasons.
- Delaware held St. Bonaventure to 10 points in the first half and to just 40 for the game on November. It was the lowest allowed by Delaware since a 70-38 win over Georgia State on January 31, 2013.
- The Blue Hens were tied for fifth in the 2016-17 CAA Preseason Poll.
- Senior guard **Erika Brown** was a 2016-17 Preseason All-CAA Second Team selection.
- UD returns four starters from 2015-16.
- The Blue Hens went 16-15 (10-8 CAA) during 2015-16.
- UD advanced to the semifinals of the 2015 CAA Championship but fell to James Madison, 68-47.

2016-17 SCHEDULE & RESULTS

N 13	GEORGE MASON	W, 67-51
N 16	at American	W, 56-55 (OT)
N 19	ST. BONAVENTURE	W, 43-40
N 22	PRINCETON	7:00 p.m.
N 25	vs. Michigan State	8:00 p.m.
	(CSUN Thanksgiving Tournament)	
N 26	vs. Cal State Northridge/Detroit	
	(CSUN Thanksgiving Tournament)	
D 01	ROBERT MORRIS	7:00 p.m.
D 04	GEORGETOWN	2:00 p.m.
D 07	at Loyola	7:00 p.m.
D 11	ARMY WEST POINT	2:00 p.m.
D 21	Hartford	7:00 p.m.
J 02	William & Mary*	5:00 p.m.
J 06	at UNCW*	11:30 a.m.
J 08	at Elon*	7:00 p.m.
J 13	JAMES MADISON*	7:00 p.m.
J 15	at Hofstra*	4:00 p.m.
J 20	NORTHEASTERN*	7:00 p.m.
J 22	CHARLESTON*	2:00 p.m.
J 27	at William & Mary*	7:00 p.m.
J 29	at Towson*	2:00 p.m.
F 03	UNCW*	7:00 p.m.
F 05	DREXEL*	2:00 p.m.
F 10	at James Madison*	7:00 p.m.
F 12	HOFSTRA*	5:00 p.m.
F 17	at Northeastern*	7:00 p.m.
F 19	at Drexel*	3:00 p.m.
F 24	Elon*	7:00 p.m.
F 26	at Charleston*	2:00 p.m.
M 01	TOWSON*	7:00 p.m.

* CAA Contest

DREXEL
 2-2 Overall/0-0 CAA


- Prior to the season, guard **Meghan Creighton** was named to the Nancy Lieberman Award Watch List which recognizes the top point guards in the nation.
- The Dragons were picked to finish third in the 2016-17 CAA Preseason Poll.
- Senior forward **Sarah Curran** was a 2015-16 Preseason All-CAA First Team selection.
- Senior guard **Jessica Pellechio** was a 2015-16 Preseason Honorable Mention.
- Drexel returns three starters from 2015-16.
- The Dragons went 19-14 (13-5 CAA) during 2015-16.
- As a No. 2 seed, Drexel advanced to the finals 2016 CAA Championship, falling to James Madison, 60-46.
- Drexel earned the CAA's automatic bid to the WNIT, falling to Temple, 74-66, in the first round.

2016-17 SCHEDULE & RESULTS

N 11	PENN STATE	W, 83-60.
N 13	DELAWARE STATE	W, 69-44.
N 16	at Vanderbilt	L, 63-73.
N 21	SYRACUSE	L, 63-73
N 27	at Bucknell	2:00 p.m.
D 03	at Cornell	1:00 p.m.
D 13	NIAGARA	5:00 p.m.
D 18	SAINT JOSEPH'S	2:00 p.m.
D 21	at Lafayette	2:00 p.m.
D 27	vs. George Mason	2:00 p.m.
<i>(FIU Holiday Tournament)</i>		
D 28	vs. UMass	12:00 p.m.
<i>(FIU Holiday Tournament)</i>		
J 02	TOWSON*	2:00 p.m.
J 06	ELON*	7:00 p.m.
J 08	at Northeastern*	2:00 p.m.
J 13	at UNCW*	7:00 p.m.
J 15	at Elon*	3:00 p.m.
J 20	CHARLESTON*	7:00 p.m.
J 22	HOFSTRA*	2:00 p.m.
J 27	at James Madison*	7:00 p.m.
J 29	NORTHEASTERN*	2:00 p.m.
F 03	at Charleston*	6:30 p.m.
F 05	at Delaware*	2:00 p.m.
F 10	WILLIAM & MARY*	7:00 p.m.
F 12	UNCW*	1:00 p.m.
F 17	at Towson*	7:00 p.m.
F 19	DELAWARE*	3:00 p.m.
F 24	JAMES MADISON*	7:00 p.m.
F 26	at Hofstra*	2:00 p.m.
M 01	at William & Mary*	2:00 p.m.

* CAA Contest

ELON
 3-1 Overall/0-0 CAA


- The Phoenix was picked to finish second in the 2016-17 CAA Preseason Poll.
- Junior guard **Shay Burnett** was a 2016-17 Preseason All-CAA First Team selection.
- Senior forward **Jenifer Rhodes** was a 2015-16 Preseason Honorable Mention.
- Elon returns four starters from 2015-16.
- The Phoenix went 18-13 (11-7 CAA) during their second season as a CAA member.
- As a No. 4 seed, Elon advanced to the quarterfinals of the 2016 CAA Championship, falling to Delaware, 57-50.
- Elon earned its second-straight bid to the WNIT, falling at Virginia Tech, 68-59, in the first round.

2016-17 SCHEDULE & RESULTS

N 11	at Green Bay	L, 53-74
<i>(Preseason WNIT)</i>		
N 14	RUTGERS	W, 66-54
N 18	Eastern Washington	W, 76-55
<i>(Preseason WNIT)</i>		
N 19	vs. Central Michigan	W, 71-57
<i>(Preseason WNIT)</i>		
N 22	BUCKNELL	7:00 p.m.
N 26	WAKE FOREST	2:00 p.m.
D 04	at North Carolina	5:30 p.m.
D 08	at Duke	7:00 p.m.
D 17	at East Tennessee State	2:00 p.m.
D 21	vs. Akron	1:00 p.m.
<i>(Georgia State Holiday Classic)</i>		
D 22	at Georgia State	1:00 p.m.
<i>(Georgia State Holiday Classic)</i>		
D 28	KING	5:30 p.m.
J 02	CHARLESTON*	7:00 p.m.
J 06	at Drexel*	7:00 p.m.
J 08	DELAWARE*	2:00 p.m.
J 13	at Charleston*	6:30 p.m.
J 15	DREXEL*	3:00 p.m.
J 20	JAMES MADISON*	7:00 p.m.
J 22	at William & Mary*	2:00 p.m.
J 27	at Northeastern*	7:00 p.m.
J 29	at Hofstra*	1:00 p.m.
F 03	TOWSON*	7:00 p.m.
F 05	at UNCW*	2:00 p.m.
F 10	NORTHEASTERN*	7:00 p.m.
F 12	at James Madison*	3:00 p.m.
F 16	HOFSTRA*	7:00 p.m.
F 19	WILLIAM & MARY*	2:00 p.m.
F 24	at Delaware*	7:00 p.m.
F 26	at Towson*	2:00 p.m.
M 01	UNCW*	7:00 p.m.

* CAA Contest

HOFSTRA
 2-1 Overall/0-0 CAA


- The Pride was picked to finish fourth in the 2015-16 CAA Preseason Poll.
- Junior forward **Ashunae Durant** was a 2015-16 Preseason All-CAA First Team selection.
- Hofstra returns two starters from 2015-16.
- The Pride went 25-9 (13-5 CAA) in 2015-16.
- As a No. 3 seed, Hofstra was upset in the quarterfinals of the 2016 CAA Championship, falling to Northeastern, 65-54.
- The Pride earned an at-large bid to the WNIT and advanced all the way to the quarterfinals but fell to FGCU, 61-46.

2016-17 SCHEDULE & RESULTS

N 11	MARIST	W, 62-42
N 14	at Stony Brook	W, 67-64
N 18	at Navy	L, 69-78
N 22	DELAWARE STATE	7:00 p.m.
N 25	at Sacramento State	5:00 p.m.
N 27	at UC Davis	4:00 p.m.
D 04	at Buffalo	12:00 p.m.
D 07	UMASS	7:00 p.m.
D 10	AMERICAN	4:00 p.m.
D 22	at Saint Joseph's	5:00 p.m.
D 30	HARTFORD	7:00 p.m.
J 02	NORTHEASTERN*	2:00 p.m.
J 06	at James Madison*	7:00 p.m.
J 08	at William & Mary*	2:00 p.m.
J 13	at Towson*	7:00 p.m.
J 15	DELAWARE*	4:00 p.m.
J 20	UNCW*	12:00 p.m.
J 22	at Drexel*	2:00 p.m.
J 27	at Charleston*	11:30 a.m.
J 29	ELON*	1:00 p.m.
F 03	JAMES MADISON*	7:00 p.m.
F 05	WILLIAM & MARY*	2:00 p.m.
F 10	CHARLESTON*	7:00 p.m.
F 12	at Delaware*	5:00 p.m.
F 16	at Elon*	7:00 p.m.
F 19	at UNCW*	2:00 p.m.
F 24	TOWSON*	7:00 p.m.
F 26	DREXEL*	2:00 p.m.
M 01	at Northeastern*	7:00 p.m.

* CAA Contest

JAMES MADISON
 2-2 Overall/0-0 CAA


- James Madison announced the sophomore center **Kayla Cooper-Williams** will miss all of 2016-17 season with a torn ACL which she sustained during an exhibition game.
- The Dukes secured their third-straight CAA Regular Season Championship and captured their third-straight CAA Championship crown in 2015-16.
- James Madison is under the direction of first-year Head Coach **Sean O'Regan**, who replaces **Kenny Brooks** after his departure to Virginia Tech.
- The Dukes were picked to four-peat as CAA Champions in the 2016-17 CAA Preseason Poll.
- After missing all of last season with a knee injury, redshirt-senior guard **Precious Hall** was named the 2016-17 CAA Preseason Player of the Year and a Preseason All-CAA First Teamer.
- Senior forward **Da'Lishia Griffin** was a 2016-17 Preseason All-CAA Second Team selection.
- Sophomore center and reigning CAA Rookie of the Year **Kayla Cooper-Williams** was a 2015-16 Preseason All-CAA honorable mention.
- JMU returns one starter from the 2015-16 squad that went 27-6 overall and 17-1 in CAA play.

2016-17 SCHEDULE & RESULTS

N 11	TENNESSEE	L, 69-81
N 13	ST. FRANCIS BROOKLYN	W, 57-83
N 15	at Liberty	W, 62-48
N 20	at Florida State	L, 64-84
N 24	vs. Idaho State	6:30 p.m.
		(Cancun Challenge)
N 25	vs. Iowa	9:00 p.m.
		(Cancun Challenge)
D 02	HAMPTON	7:00 p.m.
D 05	at Rutgers	7:00 p.m.
D 21	at St. John's	11:00 a.m.
D 28	at Saint Joseph's	7:00 p.m.
D 31	WAKE FOREST	4:30 p.m.
J 02	UNCW*	2:00 p.m.
J 06	HOFSTRA*	7:00 p.m.
J 08	at Towson*	2:00 p.m.
J 13	at Delaware*	7:00 p.m.
J 15	NORTHEASTERN*	2:00 p.m.
J 20	at Elon*	7:00 p.m.
J 22	TOWSON*	2:00 p.m.
J 27	DREXEL*	7:00 p.m.
J 29	at William & Mary*	2:00 p.m.
F 03	at Hofstra*	7:00 p.m.
F 05	at Northeastern*	2:00 p.m.
F 10	DELAWARE*	7:00 p.m.
F 12	ELON*	3:00 p.m.
F 17	at UNCW*	7:00 p.m.
F 19	at Charleston*	2:00 p.m.
F 24	at Drexel*	7:00 p.m.
F 26	WILLIAM & MARY*	5:00 p.m.
M 01	CHARLESTON	7:00 p.m.

* CAA Contest

UNCW
 2-1 Overall/0-0 CAA


- The Seahawks were picked to finish ninth in the 2015-16 CAA Preseason Poll.
- Redshirt senior guard **Jasmine Steele** was a 2016-17 Preseason Honorable Mention.
- UNCW returns four starters from 2015-16.
- The Seahawks went 7-23 (3-15 CAA) during 2015-16

2016-17 SCHEDULE & RESULTS

N 11	NORFOLK STATE	W, 64-56
N 16	at East Carolina	L, 65-75
N 20	at Georgia State	W, 72-66
N 26	PROVIDENCE	2:00 p.m.
		(UNCW Hampton Inn Thanksgiving Classic)
N 27	LA SALLE	2:00 p.m.
		(UNCW Hampton Inn Thanksgiving Classic)
N 30	at Davidson	7:00 p.m.
D 11	at NC State	2:00 p.m.
D 15	FURMAN	11:30 a.m.
D 17	WOFFORD	4:30 p.m.
D 19	CATAWBA	7:00 p.m.
D 29	at Tennessee	7:00 p.m.
J 02	at James Madison*	2:00 p.m.
J 06	DELAWARE*	11:30 a.m.
J 08	at Charleston*	2:00 p.m.
J 13	DREXEL*	7:00 p.m.
J 15	WILLIAM & MARY*	2:00 p.m.
J 20	at Hofstra*	12:00 p.m.
J 22	at Northeastern*	2:00 p.m.
J 27	TOWSON*	7:00 p.m.
J 29	CHARLESTON*	2:00 p.m.
F 03	at Delaware*	7:00 p.m.
F 05	ELON*	2:00 p.m.
F 10	at Towson*	7:00 p.m.
F 12	at Drexel*	1:00 p.m.
F 17	JAMES MADISON*	7:00 p.m.
F 19	HOFSTRA*	1:00 p.m.
F 24	at William & Mary*	7:00 p.m.
F 26	NORTHEASTERN*	2:00 p.m.
M 01	at Elon*	7:00 p.m.

* CAA Contest

NORTHEASTERN
 2-2 Overall/0-0 CAA


- During her second season at the helm, Head Coach **Kelly Cole** guided Northeastern to an 11-win turnaround overall and an eight-win turnaround in the CAA. The Huskies went 15-16 (9-9 CAA) in 2015-16.
- The Huskies were picked to finish seventh in the 2016-17 CAA Preseason Poll.
- Sophomore guard **Jess Genco** was a 2016-17 Preseason Honorable Mention.
- NU returns three starters from 2015-16.
- As the No. 6 seed, the Huskies advanced to the semifinals of the 2016 CAA Championship, but fell to Drexel, 58-49.

2016-17 SCHEDULE & RESULTS

N 11	BOSTON UNIVERSITY	W, 78-59
N 13	at Canisius	W, 83-59
N 18	SAINT MARY'S	L, 53-77
N 20	at Quinnipiac	L, 59-76
N 24	vs. Stanford	11:00 a.m.
		(Cancun Challenge)
N 25	vs. Purdue	1:30 p.m.
		(Cancun Challenge)
N 26	vs. Wichita State	11:00 a.m.
		(Cancun Challenge)
D 01	NEW HAMPSHIRE	7:00 p.m.
D 07	at Maine	8:00 p.m.
D 18	at Michigan State	12:00 p.m.
D 20	at Denver	2:00 p.m.
D 28	SIENA	2:00 p.m.
J 02	at Hofstra*	2:00 p.m.
J 06	TOWSON*	7:00 p.m.
J 08	DREXEL*	2:00 p.m.
J 13	at William & Mary*	7:00 p.m.
J 15	at James Madison*	2:00 p.m.
J 20	at Delaware*	7:00 p.m.
J 22	UNCW*	2:00 p.m.
J 27	ELON*	7:00 p.m.
J 29	at Drexel*	2:00 p.m.
F 03	WILLIAM & MARY*	7:00 p.m.
F 05	JAMES MADISON*	2:00 p.m.
F 10	at Elon*	7:00 p.m.
F 12	CHARLESTON*	2:00 p.m.
F 17	DELAWARE*	7:00 p.m.
F 19	at Towson*	2:00 p.m.
F 24	at Charleston*	6:30 p.m.
F 26	at UNCW*	2:00 p.m.
M 01	HOFSTRA	7:00 p.m.

* CAA Contest

TOWSON

3-0 Overall/0-0 CAA



- Towson is off to a 3-0 start for the first time since 2012-13. It's the seventh time in program history in which the Tigers have won three straight to start a season.
- With Lil Wayne performing on November 19 in SECU Arena, Towson hosted Cornell at the Towson Center, the first official basketball competition in the Arena since March 3, 2013.
- Towson held Wagner to 40 points on November 17. It was the lowest point total that the Tigers held an opponent to since 2009.
- Towson dropped in 90 points in the season-opener against UMass Lowell. It was the most points scored by the Tigers since the 2003-04 season.
- The Tigers were picked to finish tenth in the 2016-17 CAA Preseason Poll.
- Senior guard **Raven Bankston** was a 2016-17 Preseason All-CAA Second Team selection.
- Towson returns four starters from 2015-16.
- The Tigers went 7-24 (3-15 CAA) in 2015-16.
- As a No. 10 seed, Towson advanced to the quarterfinals of the 2016 CAA Championship, falling to Drexel, 71-54.

2016-17 SCHEDULE & RESULTS

N 11	UMass Lowell	W, 90-56
N 17	at Wagner	W, 69-40
N 19	CORNELL	W, 68-63
N 22	at UMBC	7:00 p.m.
N 27	GEORGE MASON	2:00 p.m.
N 30	GEORGETOWN	12:00 p.m.
D 03	COPPIN STATE	5:30 p.m.
D 06	at Maryland	7:00 p.m.
D 08	at Colgate	7:00 p.m.
D 11	RIDER	2:00 p.m.
D 29	NORFOLK STATE	7:00 p.m.
J 02	at Drexel*	7:00 p.m.
J 06	at Northeastern*	7:00 p.m.
J 08	JAMES MADISON*	2:00 p.m.
J 13	HOFSTRA*	7:00 p.m.
J 15	CHARLESTON*	2:00 p.m.
J 20	WILLIAM & MARY*	7:00 p.m.
J 22	at James Madison*	2:00 p.m.
J 27	at UNCW*	7:00 p.m.
J 29	DELAWARE*	2:00 p.m.
F 03	at Elon*	7:00 p.m.
F 05	at Charleston*	2:00 p.m.
F 10	UNCW*	7:00 p.m.
F 12	at William & Mary*	2:00 p.m.
F 17	DREXEL*	7:00 p.m.
F 19	NORTHEASTERN*	2:00 p.m.
F 24	at Hofstra*	7:00 p.m.
F 26	ELON*	2:00 p.m.
M 01	at Delaware*	7:00 p.m.

* CAA Contest

WILLIAM & MARY

2-1 Overall/0-0 CAA



- William & Mary has 13 road games in 2016-17.
- The Tribe was tied for fifth in the 2016-17 CAA Preseason Poll.
- Senior guard **Marlena Tremba** and senior forward **Alexandra Masaquel** were a 2016-17 Preseason All-CAA Second Team selections.
- Junior center **Abby Rendle** was a 2016-17 Preseason All-CAA Honorable Mention.
- W&M returns all five starters from 2015-16.
- The Tribe went 15-15 (6-12) in 2015-16.

2016-17 SCHEDULE & RESULTS

N 13	ST. JOHN'S	L, 57-73.
N 18	RICHMOND	W, 67-39.
N 20	at Old Dominion	W, 69-58.
N 22	at South Carolina Upstate	7:00 p.m.
N 28	DELAWARE STATE	7:00 p.m.
D 01	DARTMOUTH	7:00 p.m.
D 03	at American	2:00 p.m.
D 15	at Norfolk State	7:00 p.m.
D 18	MOUNT ST. MARY'S	2:00 p.m.
D 20	ST. FRANCIS (PA.)	7:00 p.m.
D 28	EAST CAROLINA	7:00 p.m.
J 02	at Delaware*	5:00 p.m.
J 06	at Charleston*	6:30 p.m.
J 08	HOFSTRA*	2:00 p.m.
J 13	NORTHEASTERN*	7:00 p.m.
J 15	at UNCW*	2:00 p.m.
J 20	at Towson*	7:00 p.m.
J 22	ELON*	2:00 p.m.
J 27	DELAWARE*	7:00 p.m.
J 29	JAMES MADISON*	2:00 p.m.
F 03	at Northeastern*	7:00 p.m.
F 05	at Hofstra*	2:00 p.m.
F 10	at Drexel*	2:00 p.m.
F 12	TOWSON*	2:00 p.m.
F 17	CHARLESTON*	7:00 p.m.
F 19	at Elon*	2:00 p.m.
F 24	UNCW*	7:00 p.m.
F 26	at James Madison*	5:00 p.m.
M 01	DREXEL*	7:00 p.m.

* CAA Contest



2016-17 Colonial Athletic Association
CONFERENCE BASKETBALL STATISTICS
Through games of Nov 20, 2016 (All games)



SCORING OFFENSE	G	W-L	Pts	Avg/G
1. Towson	3	3-0	227	75.7
2. Drexel	3	2-1	215	71.7
3. James Madison	4	2-2	278	69.5
4. Northeastern	4	2-2	273	68.2
5. Elon	4	3-1	269	67.2
6. UNCW	3	2-1	201	67.0
7. Hofstra	3	2-1	198	66.0
8. William & Mary	3	2-1	193	64.3
9. COFC	3	1-2	191	63.7
10. Delaware	3	3-0	166	55.3

SCORING DEFENSE	G	Pts	Avg/G
1. Delaware	3	146	48.7
2. Towson	3	159	53.0
3. William & Mary	3	170	56.7
4. Drexel	3	177	59.0
5. Elon	4	237	59.2
6. Hofstra	3	184	61.3
7. UNCW	3	197	65.7
8. James Madison	4	270	67.5
9. Northeastern	4	271	67.8
10. COFC	3	217	72.3

SCORING MARGIN	G	Offense	Defense	Margin
1. Towson	3	75.7	53.0	+22.7
2. Drexel	3	71.7	59.0	+12.7
3. Elon	4	67.2	59.2	+8.0
4. William & Mary	3	64.3	56.7	+7.7
5. Delaware	3	55.3	48.7	+6.7
6. Hofstra	3	66.0	61.3	+4.7
7. James Madison	4	69.5	67.5	+2.0
8. UNCW	3	67.0	65.7	+1.3
9. Northeastern	4	68.2	67.8	+0.5
10. COFC	3	63.7	72.3	-8.7

FREE THROW PCT	G	FTM	FTA	Pct.
1. Drexel	3	34	38	.895
2. William & Mary	3	43	55	.782
3. Northeastern	4	42	57	.737
4. COFC	3	24	33	.727
5. Delaware	3	38	54	.704
6. James Madison	4	47	71	.662
7. Towson	3	42	64	.656
8. Hofstra	3	30	56	.536
9. Elon	4	35	66	.530
10. UNCW	3	24	46	.522

FIELD GOAL PERCENTAGE	G	FGM	FGA	Pct.
1. Towson	3	83	172	.483
2. Elon	4	98	227	.432
3. UNCW	3	75	176	.426
4. Hofstra	3	74	178	.416
5. Drexel	3	76	185	.411
6. Northeastern	4	100	247	.405
7. William & Mary	3	68	171	.398
8. James Madison	4	104	272	.382
9. Delaware	3	59	166	.355
10. COFC	3	74	211	.351

FIELD GOAL PCT DEFENSE	G	FGM	FGA	Pct.
1. Delaware	3	56	164	.341
2. Towson	3	61	167	.365
3. Elon	4	84	229	.367
4. UNCW	3	72	190	.379
5. James Madison	4	84	218	.385
6. William & Mary	3	63	157	.401
7. Hofstra	3	61	151	.404
8. Drexel	3	62	153	.405
9. COFC	3	84	201	.418
10. Northeastern	4	99	228	.434

3-POINT FG PCT	G	3FGM	3FGA	Pct.
1. Towson	3	19	45	.422
2. Elon	4	38	95	.400
3. UNCW	3	27	73	.370
4. Northeastern	4	31	88	.352
5. COFC	3	19	59	.322
6. Drexel	3	29	92	.315
7. Hofstra	3	20	64	.313
8. Delaware	3	10	34	.294
9. William & Mary	3	14	51	.275
10. James Madison	4	23	90	.256

3-POINT FG PCT DEFENSE	G	3FGM	3FGA	Pct.
1. Elon	4	16	72	.222
2. COFC	3	17	72	.236
3. Delaware	3	15	57	.263
4. William & Mary	3	12	43	.279
5. Drexel	3	15	48	.313
6. Towson	3	19	60	.317
7. Northeastern	4	26	78	.333
8. James Madison	4	30	84	.357
9. Hofstra	3	17	47	.362
10. UNCW	3	19	49	.388

REBOUNDING OFFENSE	G	Rebounds	Avg/G
1. James Madison	4	175	43.8
2. COFC	3	127	42.3
3. Elon	4	162	40.5
4. UNCW	3	120	40.0
5. Delaware	3	112	37.3
6. Northeastern	4	149	37.2
7. Towson	3	110	36.7
8. Hofstra	3	107	35.7
9. William & Mary	3	107	35.7
10. Drexel	3	93	31.0

REBOUNDING DEFENSE	G	Rebounds	Avg/G
1. Towson	3	102	34.0
2. Elon	4	137	34.2
3. William & Mary	3	107	35.7
4. Hofstra	3	109	36.3
5. Northeastern	4	148	37.0
James Madison	4	148	37.0
7. Drexel	3	115	38.3
8. Delaware	3	116	38.7
9. UNCW	3	125	41.7
10. COFC	3	139	46.3



2016-17 Colonial Athletic Association
CONFERENCE BASKETBALL STATISTICS
Through games of Nov 20, 2016 (All games)



REBOUNDING MARGIN	G	Team	Avg.	Opp.	Avg.	Margin
1. James Madison	4	175	43.8	148	37.0	+6.8
2. Elon	4	162	40.5	137	34.2	+6.2
3. Towson	3	110	36.7	102	34.0	+2.7
4. Northeastern	4	149	37.2	148	37.0	+0.2
5. William & Mary	3	107	35.7	107	35.7	+0.0
6. Hofstra	3	107	35.7	109	36.3	-0.7
7. Delaware	3	112	37.3	116	38.7	-1.3
8. UNCW	3	120	40.0	125	41.7	-1.7
9. COFC	3	127	42.3	139	46.3	-4.0
10. Drexel	3	93	31.0	115	38.3	-7.3

ASSISTS	G	No.	Avg/G
1. Drexel	3	54	18.0
2. Northeastern	4	67	16.8
3. Hofstra	3	49	16.3
4. UNCW	3	48	16.0
5. Towson	3	45	15.0
6. William & Mary	3	44	14.7
7. Elon	4	52	13.0
8. COFC	3	37	12.3
9. James Madison	4	42	10.5
10. Delaware	3	31	10.3

TURNOVER MARGIN	G	Team	Avg.	Opp.	Avg.	Margin
1. Drexel	3	40	13.3	67	22.3	+9.0
2. Towson	3	48	16.0	72	24.0	+8.0
3. William & Mary	3	42	14.0	57	19.0	+5.0
4. Delaware	3	31	10.3	46	15.3	+5.0
5. Hofstra	3	44	14.7	58	19.3	+4.7
6. James Madison	4	69	17.3	85	21.3	+4.0
7. Northeastern	4	65	16.3	67	16.8	+0.5
8. COFC	3	63	21.0	63	21.0	+0.0
9. UNCW	3	57	19.0	47	15.7	-3.3
10. Elon	4	71	17.8	56	14.0	-3.8

OFFENSIVE REBOUNDS	G	No.	Avg/G
1. James Madison	4	73	18.3
2. COFC	3	50	16.7
3. William & Mary	3	42	14.0
4. Elon	4	53	13.3
5. Northeastern	4	50	12.5
6. UNCW	3	37	12.3
7. Hofstra	3	35	11.7
8. Delaware	3	31	10.3
9. Drexel	3	30	10.0
10. Towson	3	29	9.7

DEFENSIVE REB PCT.	G	D-Reb	Opp. OR	D-Reb%
1. Hofstra	3	72	25	.742
2. Towson	3	81	33	.711
3. Delaware	3	81	34	.704
4. Elon	4	109	47	.699
5. James Madison	4	102	44	.699
6. Northeastern	4	99	45	.688
7. Drexel	3	63	36	.636
8. UNCW	3	83	50	.624
9. William & Mary	3	65	41	.613
10. COFC	3	77	51	.602

BLOCKED SHOTS	G	No.	Avg/G
1. William & Mary	3	16	5.3
2. Delaware	3	10	3.3
3. UNCW	3	9	3.0
Hofstra	3	9	3.0
5. Elon	4	11	2.8
6. James Madison	4	10	2.5
7. Towson	3	7	2.3
8. Northeastern	4	8	2.0
9. Drexel	3	5	1.7
10. COFC	3	3	1.0

STEALS	G	No.	Avg/G
1. COFC	3	39	13.0
Towson	3	39	13.0
3. William & Mary	3	32	10.7
4. Drexel	3	30	10.0
5. James Madison	4	36	9.0
6. Hofstra	3	26	8.7
7. Delaware	3	20	6.7
8. Elon	4	25	6.3
9. Northeastern	4	24	6.0
UNCW	3	18	6.0

ASSIST/TURNOVER RATIO	G	Ast.	Avg.	T/O	Avg.	Ratio
1. Drexel	3	54	18.0	40	13.3	1.4
2. Hofstra	3	49	16.3	44	14.7	1.1
3. William & Mary	3	44	14.7	42	14.0	1.0
4. Northeastern	4	67	16.8	65	16.3	1.0
5. Delaware	3	31	10.3	31	10.3	1.0
6. Towson	3	45	15.0	48	16.0	0.9
7. UNCW	3	48	16.0	57	19.0	0.8
8. Elon	4	52	13.0	71	17.8	0.7
9. James Madison	4	42	10.5	69	17.3	0.6
10. COFC	3	37	12.3	63	21.0	0.6

DEFENSIVE REBOUNDS	G	No.	Avg/G
1. UNCW	3	83	27.7
2. Elon	4	109	27.3
3. Delaware	3	81	27.0
Towson	3	81	27.0
5. COFC	3	77	25.7
6. James Madison	4	102	25.5
7. Northeastern	4	99	24.8
8. Hofstra	3	72	24.0
9. William & Mary	3	65	21.7
10. Drexel	3	63	21.0

OFFENSIVE REB PCT.	G	O-Reb	Opp. DR	O-Reb%
1. James Madison	4	73	104	.412
2. William & Mary	3	42	66	.389
3. Elon	4	53	90	.371
4. COFC	3	50	88	.362
5. UNCW	3	37	75	.330
6. Northeastern	4	50	103	.327
7. Towson	3	29	69	.296
8. Hofstra	3	35	84	.294
9. Drexel	3	30	79	.275
10. Delaware	3	31	82	.274



2016-17 Colonial Athletic Association
CONFERENCE BASKETBALL STATISTICS
Through games of Nov 20, 2016 (All games)



3-POINT FG MADE	G	No.	Avg/G
1. Drexel	3	29	9.7
2. Elon	4	38	9.5
3. UNCW	3	27	9.0
4. Northeastern	4	31	7.8
5. Hofstra	3	20	6.7
6. Towson	3	19	6.3
COFC	3	19	6.3
8. James Madison	4	23	5.8
9. William & Mary	3	14	4.7
10. Delaware	3	10	3.3



2016-17 Colonial Athletic Association
CONFERENCE BASKETBALL STATISTICS
Through games of Nov 20, 2016 (All games)



Team	Conference	Pct.	PF	PA	Overall	Pct.	PF	PA	Current unbeaten streak
Towson	0-0	.000	0.0	0.0	3-0	1.000	75.7	53.0	Elon -- 3
Delaware	0-0	.000	0.0	0.0	3-0	1.000	55.3	48.7	Towson -- 3
Elon	0-0	.000	0.0	0.0	3-1	.750	67.2	59.2	Delaware -- 3
Drexel	0-0	.000	0.0	0.0	2-1	.667	71.7	59.0	William & Mary -- 2
UNCW	0-0	.000	0.0	0.0	2-1	.667	67.0	65.7	UNCW -- 1
Hofstra	0-0	.000	0.0	0.0	2-1	.667	66.0	61.3	
William & Mary	0-0	.000	0.0	0.0	2-1	.667	64.3	56.7	
James Madison	0-0	.000	0.0	0.0	2-2	.500	69.5	67.5	
Northeastern	0-0	.000	0.0	0.0	2-2	.500	68.2	67.8	
COFC	0-0	.000	0.0	0.0	1-2	.333	63.7	72.3	

TEAM SUMMARIES	G	PF-PA	Avg score	Margin	FG-FGA	Pct.	3FG-FGA	Pct.	FT-FTA	Pct.	RebF	RebA	Margin
COFC	3	191-217	63.7-72.3	-8.7	74-211	.351	19-59	.322	24-33	.727	127	139	-4.0
Delaware	3	166-146	55.3-48.7	+6.7	59-166	.355	10-34	.294	38-54	.704	112	116	-1.3
Drexel	3	215-177	71.7-59.0	+12.7	76-185	.411	29-92	.315	34-38	.895	93	115	-7.3
Elon	4	269-237	67.2-59.2	+8.0	98-227	.432	38-95	.400	35-66	.530	162	137	+6.2
Hofstra	3	198-184	66.0-61.3	+4.7	74-178	.416	20-64	.313	30-56	.536	107	109	-0.7
James Madison	4	278-270	69.5-67.5	+2.0	104-272	.382	23-90	.256	47-71	.662	175	148	+6.8
Northeastern	4	273-271	68.2-67.8	+0.5	100-247	.405	31-88	.352	42-57	.737	149	148	+0.2
Towson	3	227-159	75.7-53.0	+22.7	83-172	.483	19-45	.422	42-64	.656	110	102	+2.7
UNCW	3	201-197	67.0-65.7	+1.3	75-176	.426	27-73	.370	24-46	.522	120	125	-1.7
William & Mary	3	193-170	64.3-56.7	+7.7	68-171	.398	14-51	.275	43-55	.782	107	107	+0.0

ATTENDANCE	Home	Average	Away	Average	Neutral	Average	Total	Average
COFC	1-456	456	2-2546	1273	0-0	0	3-3002	1001
Delaware	2-2450	1225	1-407	407	0-0	0	3-2857	952
Drexel	2-1735	868	1-2243	2243	0-0	0	3-3978	1326
Elon	1-983	983	2-2473	1236	1-100	100	4-3556	889
Hofstra	1-0	0	2-1209	604	0-0	0	3-1209	403
James Madison	2-6951	3476	2-3866	1933	0-0	0	4-10817	2704
Northeastern	2-1662	831	2-1098	549	0-0	0	4-2760	690
Towson	2-613	306	1-323	323	0-0	0	3-936	312
UNCW	1-813	813	2-5430	2715	0-0	0	3-6243	2081
William & Mary	2-938	469	1-1089	1089	0-0	0	3-2027	676
Totals	16-16601	1038	16-20684	1293	1-100	100	33-37385	1133



2016-17 Colonial Athletic Association
INDIVIDUAL BASKETBALL STATISTICS
Through games of Nov 20, 2016 (All games)



To be ranked, a player must appear in at least 75.0% of their team's games.

SCORING								REBOUNDING							
	Cl	G	FG	3FG	FT	Pts	Avg/G		Cl	G	Off	Def	Total	Avg/G	
1. Hall, Precious-JMU	Sr	4	39	16	13	107	26.8	1. DeGraaf, Jenny-UNCW	Jr	3	11	20	31	10.3	
2. Bankston, Raven-Towson	Sr	3	28	8	13	77	25.7	2. Brown, Tanisha-COFC	Jr	3	8	21	29	9.7	
3. Pellechio, Jessica-Drexel	Sr	3	20	14	4	58	19.3	3. Enabosi, Nicole-Delaware	So	3	6	22	28	9.3	
4. Bolden, Breanna-COFC	Sr	3	20	4	11	55	18.3	4. Sally, Francesca-NU	Sr	4	9	26	35	8.8	
5. Durant, Ashunae-Hofstra	Jr	3	21	0	12	54	18.0	5. Durant, Ashunae-Hofstra	Jr	3	10	14	24	8.0	
6. Curran, Sarah-Drexel	Sr	3	21	3	6	51	17.0	6. Rhodes, Jenifer-ELON	Sr	4	7	24	31	7.8	
7. Genco, Jess-NU	So	4	23	14	5	65	16.3	7. Bolden, Breanna-COFC	Sr	3	5	18	23	7.7	
8. Martin, Sianni-Towson	So	3	17	6	6	46	15.3	8. Banks, Rebekah-UNCW	Jr	3	11	11	22	7.3	
9. Sally, Francesca-NU	Sr	4	22	4	12	60	15.0	Chatman, Sade-Delaware	Jr	3	6	16	22	7.3	
10. Enabosi, Nicole-Delaware	So	3	12	1	15	40	13.3	10. Smalls, Kamiah-JMU	Fr	4	16	12	28	7.0	
11. Smalls, Kamiah-JMU	Fr	4	22	0	8	52	13.0	Henry, Jordan-UNCW	Sr	3	7	14	21	7.0	
12. Tremba, Marlana-WM	Sr	3	11	8	8	38	12.7	12. Nicholas, Makeda-Delaware	Jr	3	4	16	20	6.7	
13. Graves, Jada-ELON	Fr	4	17	11	5	50	12.5	13. Masaquel, Alexandra-WM	Sr	3	8	11	19	6.3	
14. Raque, Madison-UNCW	Jr	3	12	8	5	37	12.3	14. Felgemacher, Savannah-JMU	So	4	13	11	24	6.0	
15. Chatman, Sade-Delaware	Jr	3	15	0	6	36	12.0	Epps, Sydni-Hofstra	Sr	3	3	15	18	6.0	
DeGraaf, Jenny-UNCW	Jr	3	14	6	2	36	12.0	16. Butler, Tasia-JMU	Jr	4	6	17	23	5.8	
17. Boggs, Bianca-WM	So	3	11	2	11	35	11.7	17. Boggs, Bianca-WM	So	3	8	9	17	5.7	
18. Giacone, Gabby-NU	So	4	21	1	2	45	11.3	18. Rendle, Abby-WM	Jr	3	7	9	16	5.3	
Burnett,Shay-ELON	Jr	4	14	7	10	45	11.3	Smith, Jordyn-Towson	Jr	3	5	11	16	5.3	
20. Brown, Tanisha-COFC	Jr	3	12	0	9	33	11.0	20. Greenberg, Bailey-Drexel	Fr	3	5	10	15	5.0	
21. Brown,Lauren-ELON	Sr	4	15	10	2	42	10.5	White, Ra'Shika-ELON	Fr	3	10	5	15	5.0	
22. Tate, Timber-UNCW	Fr	3	10	9	0	29	9.7	Creighton, Meghan-Drexel	Sr	3	3	12	15	5.0	
23. Rhodes, Jenifer-ELON	Sr	4	15	0	8	38	9.5	Bankston, Raven-Towson	Sr	3	2	13	15	5.0	
24. Luciano, Krystal-Hofstra	Sr	3	11	5	1	28	9.3								
Greenberg, Bailey-Drexel	Fr	3	11	2	4	28	9.3								
Huff, Darien-COFC	So	3	11	4	2	28	9.3								
27. Henry, Jordan-UNCW	Sr	3	12	0	3	27	9.0								
28. Reynolds, Victoria-WM	Fr	3	8	1	9	26	8.7								
29. Rendle, Abby-WM	Jr	3	10	0	5	25	8.3								
Masaquel, Alexandra-WM	Sr	3	11	0	3	25	8.3								
FIELD GOAL PCT								ASSISTS			Cl	G	No.	Avg/G	
	Cl	G	FGM	FGA	Pct.										
1. Henry, Jordan-UNCW	Sr	3	12	17	.706			1. Creighton, Meghan-Drexel	Sr	3	19	6.3			
2. Bankston, Raven-Towson	Sr	3	28	43	.651			2. Steele, Jasmine-UNCW	Sr	3	17	5.7			
3. Smalls, Kamiah-JMU	Fr	4	22	37	.595			3. Genco, Jess-NU	So	4	20	5.0			
4. Burnett,Shay-ELON	Jr	4	14	24	.583			Luciano, Krystal-Hofstra	Sr	3	15	5.0			
5. Giacone, Gabby-NU	So	4	21	37	.568			5. Curran, Sarah-Drexel	Sr	3	14	4.7			
6. Huff, Darien-COFC	So	3	11	20	.550			6. Raque, Madison-UNCW	Jr	3	13	4.3			
7. Graves, Jada-ELON	Fr	4	17	32	.531			Tremba, Marlana-WM	Sr	3	13	4.3			
8. DeGraaf, Jenny-UNCW	Jr	3	14	27	.519			8. Green, Jenna-WM	Jr	3	11	3.7			
9. Chatman, Sade-Delaware	Jr	3	15	30	.500			Martin, Sianni-Towson	So	3	11	3.7			
Greenberg, Bailey-Drexel	Fr	3	11	22	.500			10. Chatman, Sade-Delaware	Jr	3	10	3.3			
11. Genco, Jess-NU	So	4	23	47	.489			Bankston, Raine-Towson	Jr	3	10	3.3			
12. Brown, Tanisha-COFC	Jr	3	12	25	.480			12. Burnett,Shay-ELON	Jr	4	13	3.3			
13. Boggs, Bianca-WM	So	3	11	23	.478			13. Baucom,Essence-ELON	Sr	4	12	3.0			
14. Durant, Ashunae-Hofstra	Jr	3	21	44	.477			Sally, Francesca-NU	Sr	4	12	3.0			
Curran, Sarah-Drexel	Sr	3	21	44	.477			15. Brown,Lauren-ELON	Sr	4	11	2.8			



2016-17 Colonial Athletic Association
INDIVIDUAL BASKETBALL STATISTICS
Through games of Nov 20, 2016 (All games)



FREE THROW PCT	Cl	G	FTM	FTA	Pct.
1. Creighton, Meghan-Drexel	Sr	3	6	6	1.000
Lidge, Kelsi-Drexel	Jr	3	6	6	1.000
3. Boggs, Bianca-WM	So	3	11	12	.917
4. Reynolds, Victoria-WM	Fr	3	9	10	.900
5. Tremba, Marlena-WM	Sr	3	8	9	.889
6. Bankston, Raven-Towson	Sr	3	13	15	.867
7. Curran, Sarah-Drexel	Sr	3	6	7	.857
Kalin, Marianne-Hofstra	Fr	3	6	7	.857
Martin, Sianni-Towson	So	3	6	7	.857
10. Bolden, Breanna-COFC	Sr	3	11	13	.846
11. Nicholas, Makeda-Delaware	Jr	3	8	10	.800
12. Enabosi, Nicole-Delaware	So	3	15	19	.789
13. Burnett, Shay-ELON	Jr	4	10	13	.769
14. Smalls, Kamiah-JMU	Fr	4	8	11	.727
15. Brown, Tanisha-COFC	Jr	3	9	13	.692

STEALS	Cl	G	No.	Avg/G
1. Bolden, Breanna-COFC	Sr	3	16	5.3
2. Bankston, Raven-Towson	Sr	3	14	4.7
3. Masaquel, Alexandra-WM	Sr	3	12	4.0
4. Lidge, Kelsi-Drexel	Jr	3	7	2.3
5. Genco, Jess-NU	So	4	8	2.0
Smalls, Kamiah-JMU	Fr	4	8	2.0
Brown, Tanisha-COFC	Jr	3	6	2.0
Creighton, Meghan-Drexel	Sr	3	6	2.0
9. Graves, Jada-ELON	Fr	4	7	1.8
Hall, Precious-JMU	Sr	4	7	1.8
11. Luciano, Krystal-Hofstra	Sr	3	5	1.7
Raque, Madison-UNCW	Jr	3	5	1.7
Leon, Aleana-Hofstra	So	3	5	1.7
Green, Jenna-WM	Jr	3	5	1.7
Martin, Sianni-Towson	So	3	5	1.7
Brown, Aubree-Drexel	Fr	3	5	1.7
Durant, Ashunae-Hofstra	Jr	3	5	1.7
Chatman, Sade-Delaware	Jr	3	5	1.7

3-POINT FG PCT	Cl	G	3FG	FGA	Pct.
1. Jardine, Hannah-Delaware	Sr	3	5	6	.833
2. Reynolds, Logan-JMU	So	4	4	5	.800
3. DeGraaf, Jenny-UNCW	Jr	3	6	9	.667
4. Burnett, Shay-ELON	Jr	4	7	11	.636
5. Graves, Jada-ELON	Fr	4	11	18	.611
6. Garner, Meme-ELON	Jr	4	6	10	.600
7. Bankston, Raven-Towson	Sr	3	8	14	.571
8. Sally, Francesca-NU	Sr	4	4	8	.500
9. Genco, Jess-NU	So	4	14	29	.483
10. Hernandez Gil, Ana-Hofstra	Fr	3	7	15	.467
11. Dorsey, Cailin-COFC	Fr	3	4	9	.444
Huff, Darien-COFC	So	3	4	9	.444
13. Martin, Sianni-Towson	So	3	6	15	.400
14. Tate, Timber-UNCW	Fr	3	9	23	.391
15. Raque, Madison-UNCW	Jr	3	8	21	.381

3-POINT FG MADE	Cl	G	3FG	Avg/G
1. Pellechio, Jessica-Drexel	Sr	3	14	4.7
2. Hall, Precious-JMU	Sr	4	16	4.0
3. Genco, Jess-NU	So	4	14	3.5
4. Tate, Timber-UNCW	Fr	3	9	3.0
5. Graves, Jada-ELON	Fr	4	11	2.8
6. Bankston, Raven-Towson	Sr	3	8	2.7
Tremba, Marlena-WM	Sr	3	8	2.7
Raque, Madison-UNCW	Jr	3	8	2.7
9. Brown, Lauren-ELON	Sr	4	10	2.5
10. Hernandez Gil, Ana-Hofstra	Fr	3	7	2.3
11. DeGraaf, Jenny-UNCW	Jr	3	6	2.0
Martin, Sianni-Towson	So	3	6	2.0
13. Burnett, Shay-ELON	Jr	4	7	1.8
14. Luciano, Krystal-Hofstra	Sr	3	5	1.7
Askin, Olivia-Hofstra	Jr	3	5	1.7
Jardine, Hannah-Delaware	Sr	3	5	1.7

BLOCKED SHOTS	Cl	G	No.	Avg/G
1. Rendle, Abby-WM	Jr	3	8	2.7
2. Durant, Ashunae-Hofstra	Jr	3	4	1.3
Nicholas, Makeda-Delaware	Jr	3	4	1.3
4. Chatman, Sade-Delaware	Jr	3	3	1.0
Luciano, Krystal-Hofstra	Sr	3	3	1.0
Enabosi, Nicole-Delaware	So	3	3	1.0
Curtis, Kasey-WM	Sr	3	3	1.0
Cuevas, Mary-Towson	Jr	3	3	1.0
9. Giaccone, Gabby-NU	So	4	3	0.8
Johnson, Malaya-ELON	Jr	4	3	0.8
11. Huff, Darien-COFC	So	3	2	0.7
Porter, Amber-JMU	Jr	3	2	0.7
Tate, Timber-UNCW	Fr	3	2	0.7
Willis, Diamond-UNCW	Jr	3	2	0.7
White, Ra'Shika-ELON	Fr	3	2	0.7
Curran, Sarah-Drexel	Sr	3	2	0.7
Kracikova, Tereza-Drexel	So	3	2	0.7
Smith, Jordyn-Towson	Jr	3	2	0.7

ASSIST/TURNOVER RATIO	Cl	G	Ast.	T/O	Ratio
1. Creighton, Meghan-Drexel	Sr	3	19	5	3.8
2. Chatman, Sade-Delaware	Jr	3	10	4	2.5
3. Tremba, Marlena-WM	Sr	3	13	6	2.2
4. Curran, Sarah-Drexel	Sr	3	14	7	2.0
5. Martin, Sianni-Towson	So	3	11	6	1.8
6. Genco, Jess-NU	So	4	20	11	1.8
7. Bankston, Raine-Towson	Jr	3	10	6	1.7
8. Raque, Madison-UNCW	Jr	3	13	8	1.6
9. Luciano, Krystal-Hofstra	Sr	3	15	10	1.5
10. Burnett, Shay-ELON	Jr	4	13	9	1.4
11. Baucom, Essence-ELON	Sr	4	12	9	1.3
12. Sally, Francesca-NU	Sr	4	12	10	1.2
13. Steele, Jasmine-UNCW	Sr	3	17	16	1.1
14. Green, Jenna-WM	Jr	3	11	11	1.0



2016-17 Colonial Athletic Association
INDIVIDUAL BASKETBALL STATISTICS
Through games of Nov 20, 2016 (All games)



OFFENSIVE REBOUNDS					CI	G	No.	Avg/G
1.	Smalls, Kamiah-JMU	Fr	4	16	4.0			
2.	DeGraaf, Jenny-UNCW	Jr	3	11	3.7			
	Banks, Rebekah-UNCW	Jr	3	11	3.7			
4.	White, Ra'Shika-ELON	Fr	3	10	3.3			
	Durant, Ashunae-Hofstra	Jr	3	10	3.3			
6.	Felgemacher, Savannah-JMU	So	4	13	3.3			
7.	Boggs, Bianca-WM	So	3	8	2.7			
	Masaquel, Alexandra-WM	Sr	3	8	2.7			
	Brown, Tanisha-COFC	Jr	3	8	2.7			
10.	Lassiter, Loren-NU	Jr	4	10	2.5			
11.	Henry, Jordan-UNCW	Sr	3	7	2.3			
	Rendle, Abby-WM	Jr	3	7	2.3			
	Reynolds, Victoria-WM	Fr	3	7	2.3			
	Lidge, Kelsi-Drexel	Jr	3	7	2.3			
15.	Sally, Francesca-NU	Sr	4	9	2.3			

DEFENSIVE REBOUNDS					CI	G	No.	Avg/G
1.	Enabosi, Nicole-Delaware	So	3	22	7.3			
2.	Brown, Tanisha-COFC	Jr	3	21	7.0			
3.	DeGraaf, Jenny-UNCW	Jr	3	20	6.7			
4.	Sally, Francesca-NU	Sr	4	26	6.5			
5.	Rhodes, Jennifer-ELON	Sr	4	24	6.0			
	Bolden, Breanna-COFC	Sr	3	18	6.0			
7.	Chatman, Sade-Delaware	Jr	3	16	5.3			
	Nicholas, Makeda-Delaware	Jr	3	16	5.3			
9.	Epps, Sydni-Hofstra	Sr	3	15	5.0			
10.	Durant, Ashunae-Hofstra	Jr	3	14	4.7			
	Henry, Jordan-UNCW	Sr	3	14	4.7			
12.	Bankston, Raven-Towson	Sr	3	13	4.3			
13.	Butler, Tasia-JMU	Jr	4	17	4.3			
14.	Creighton, Meghan-Drexel	Sr	3	12	4.0			
	Pellechio, Jessica-Drexel	Sr	3	12	4.0			
	Raque, Madison-UNCW	Jr	3	12	4.0			

MINUTES PLAYED					CI	G	No.	Avg/G
1.	Genco, Jess-NU	So	4	145	36.2			
2.	Tremba, Marlena-WM	Sr	3	107	35.7			
3.	Durant, Ashunae-Hofstra	Jr	3	106	35.3			
4.	Creighton, Meghan-Drexel	Sr	3	105	35.0			
5.	Pellechio, Jessica-Drexel	Sr	3	101	33.7			
6.	Raque, Madison-UNCW	Jr	3	100	33.3			
7.	Chatman, Sade-Delaware	Jr	3	99	33.0			
	Enabosi, Nicole-Delaware	So	3	99	33.0			
	Brown, Erika-Delaware	Sr	3	99	33.0			
10.	Hall, Precious-JMU	Sr	4	130	32.5			