

CAA WOMEN'S BASKETBALL

Colonial Athletic Association

Weekly Report • February 20, 2017

College of Charleston • Delaware • Drexel • Elon • Hofstra • James Madison • UNCW • Northeastern • Towson • William & Mary

2016-17 CAA WOMEN'S BASKETBALL STANDINGS

	Conference						Overall						
	W	L	Pct.	H	A	Stk.	W	L	Pct.	H	A	N	Stk.
ELON	13	2	.867	7-1	6-1	W2	21	6	.778	10-2	9-4	2-0	W2
JAMES MADISON	13	2	.867	6-1	7-1	W8	20	6	.769	9-2	10-3	1-1	W8
DREXEL	11	4	.733	7-1	4-3	W5	20	6	.769	12-1	6-5	2-0	W5
DELAWARE	8	7	.533	4-3	4-4	L2	14	12	.538	8-6	6-4	0-2	L2
WILLIAM & MARY	6	9	.400	3-4	3-5	L2	16	10	.615	9-5	7-5	0-0	L2
NORTHEASTERN	6	9	.400	4-4	2-5	W3	10	17	.370	6-6	4-8	0-3	W3
CHARLESTON	6	9	.400	5-2	1-7	L1	9	17	.346	5-6	4-11	0-0	L1
HOFSTRA	4	11	.267	2-5	2-6	W1	11	15	.423	6-6	5-9	0-0	W1
TOWSON	4	11	.267	3-5	1-6	L8	11	15	.423	8-7	3-8	0-0	L8
UNCW	4	11	.267	2-56	2-5	L3	9	17	.346	5-9	4-8	0-0	L3

** Prior to seeding the 2017 CAA Women's Basketball Championship, UNCW and William & Mary will have one additional win and one less loss on their conference records and Charleston will have two less wins and two additional losses. For more information, see the inset on page 3.

UPCOMING GAMES

February 24
 Northeastern at Charleston* 6:30 p.m.
 Elon at Delaware* 7:00 p.m.
 James Madison at Drexel* 7:00 p.m.
 Towson at Hofstra* 7:00 p.m.
 UNCW at William & Mary* 7:00 p.m.

February 26
 Delaware at Charleston* 2:00 p.m.
 Drexel at Hofstra* 2:00 p.m.
 Elon at Towson* 2:00 p.m.
 Northeastern at UNCW* 2:00 p.m.
 William & Mary at James Madison* 5:00 p.m. 

March 1
 Charleston at James Madison* 7:00 p.m.
 Towson at Delaware* 7:00 p.m.
 Drexel at William & Mary* 7:00 p.m.
 UNCW at Elon* 7:00 p.m.
 Hofstra at Northeastern* 7:00 p.m.

March 8-11
 CAA Women's Basketball Championship
 JMU Convocation Center | Harrisonburg, Va.

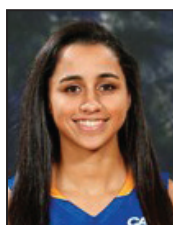
RECENT RESULTS

February 16
 Hofstra 61, Elon 72*

February 17
 Charleston 71, William & Mary 69 (OT)*
 Delaware 41, Northeastern 50*
 Drexel 65, Towson 80*
 James Madison 70, UNCW 59*

February 19
 Hofstra 66, UNCW 54*
 James Madison 84, Charleston 78*
 William & Mary 47, Elon 70*
 Northeastern 63, Towson 51*
 Delaware 49, Drexel 53 (OT)*

#CAAHOOPS PLAYER OF THE WEEK

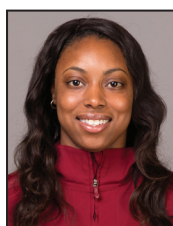


KRYSTAL LUCIANO

Senior | Guard | San Juan, Puerto Rico
 Hofstra University



Senior Krystal Luciano averaged 15.5 points, 9.0 assists and 6.5 rebounds and notched a triple-double in Hofstra's 1-1 week. On Sunday, Luciano recorded the first triple-double in Hofstra history, finishing with 21 points, 10 rebounds and 10 assists to lead the Pride to a 66-54 road win at UNCW. Her 10 boards were a career high and her 21 points also tied for a career best. She went 3-for-6 from three-point range, with each of her treys coming in key moments for the Pride, and had three steals. She also dished out her 500th career assist. In Thursday night's tight battle with first-place Elon, she posted 10 points and eight assists.



TANISHA BROWN

Junior | Forward | Myrtle Beach, S.C.
 College of Charleston



Junior Tanisha Brown had an impressive week, averaging 23.0 points and 9.0 rebounds and shooting 56.2 percent (18-for-32) in College of Charleston's 1-1 week. In the 71-69 overtime win at William & Mary, Brown scored four of her career-high and game-high 24 points in the extra frame, and matched career-bests in rebounding (12) and blocks (2) while coming away with her ninth double-double of the season. The junior followed that up with a 22-point outing in the tight 84-78 contest with first-place James Madison, chipping in a team-high six rebounds.

#CAAHOOPS ROOKIE OF THE WEEK



LEXIE BARRIER

Freshman | Guard | Philadelphia, Pa.
 James Madison University



Freshman Lexie Barrier averaged 13.0 points, 2.5 rebounds and 2.5 assists to help the Dukes to a 2-0 weekend. She earned her first start in a JMU uniform on Friday, her 25th straight appearance for the Dukes, finishing with 10 points at UNCW. At Charleston, Lexie Barrier went 3-for-4 in the first half, including a perfect 3-for-3 from three-point range, to post 11 points over a 14-minute stretch in her second career start. She finished with 16 points and a career-best 4-for-5 performance from beyond the arc. It is the second CAA Rookie of the Week honor for Barrier this season.

Contact: Kelly McCarthy • (804) 525-1430 • kmccarthy@caasports.com

CAASports.com • Twitter: @CAABasketball • Instagram: @CAASports • Snapchat: CAAsports • Facebook: CAASports • YouTube: CAASportsProductions • CAA.TV

DOUBLE-DIGIT STREAKS

Scoring (min. 5 gms)

Precious Hall (James Madison)	26 games
Breanna Bolden (CofC)	18 games
Ashunae Durant (Hofstra)	10 games

Rebounding (min. 2 gms)

CAA Weekly Awards

PLAYERS OF THE WEEK

Nov. 14	Precious Hall, (G), JMU
Nov. 21	Raven Bankston (G), Towson
Nov. 28	Jordyn Smith (F), Towson
	Meghan Creighton (G), Drexel
Dec. 5	Marlena Tremba (G), William & Mary
	Nicole Enabosi (F), Delaware
Dec. 12	Ashunae Durant (F), Hofstra
	Precious Hall (G), JMU
Dec. 19	Marlena Tremba (G), William & Mary
Dec. 26	Shay Burnett (G), Elon
Jan. 2	Sarah Curran (F), Drexel
	Abby Rendle (C), William & Mary
Jan. 9	Breanna Bolden (G), CofC
Jan. 16	Lauren Brown (G), Elon
Jan. 23	Nicole Enabosi (F), Delaware
	Precious Hall (G), JMU
Jan. 30	Jordan Henry (F), UNCW
	Precious Hall (G), JMU
Feb. 6	Shay Burnett (G), Elon
	Breanna Bolden (G), CofC
Feb. 13	Meghan Creighton (G), Drexel
	Amber Porter (F/C), JMU
Feb. 20	Tanisha Brown (F), CofC
	Krystal Luciano (F), Hofstra
Feb. 27	
Mar. 6	

ROOKIES OF THE WEEK

Nov. 14	Kamiah Smalls (G), JMU
Nov. 21	Jada Graves (G), Elon
Nov. 28	Kamiah Smalls (G), JMU
Dec. 5	Ra'Shika White (C), Elon
Dec. 12	Ra'Shika White (C), Elon
Dec. 19	Ana Ferariu (G), Drexel
Dec. 26	Bailey Greenberg (F), Drexel
Jan. 2	Lexie Barrier (G), JMU
Jan. 9	Kamiah Smalls (G), JMU
Jan. 16	Kamiah Smalls (G), JMU
Jan. 23	Bailey Greenberg (F), Drexel
Jan. 30	Abby Gonzales (G), Delaware
Feb. 6	Kamiah Smalls (G), JMU
Feb. 13	Bailey Greenberg (F), Drexel
Feb. 20	Lexie Barrier (G), JMU
Feb. 27	
Mar. 6	

UPCOMING "PINK" GAMES

February 24 Elon at Delaware

#CAAHOOPS THE WEEK THAT WAS

- **Charleston (9-17; 6-9 CAA):** The Cougars split games last week, pulling out an overtime win at William & Mary before falling to James Madison. In addition to **Tanisha Brown's** impressive week with 23.0 points and 9.0 rebounds, senior **Breanna Bolden** averaged 18.5 points, 5.0 rebounds, 4.0 steals and 3.5 assists.
- **Delaware (14-12; 8-7 CAA):** The Blue Hens dropped a pair of road games to Northeastern and Drexel last week. Senior **Erika Brown** averaged 16.0 points per game while **Makeda Nicholas** put together a solid weekend averaging 9.5 points, 8.0 rebounds and 4.5 blocks per game.
- **Drexel (20-6; 11-4 CAA):** The Dragons went 2-0 with victories over Towson and Delaware, in overtime, to secure their sixth 20-win season. Senior **Jessica Pellechio** averaged 14.5 points per game, including 23 points against Delaware. Rookie **Ana Ferariu** averaged 9.0 points per game, including 15 points against Towson.
- **Elon (21-6; 13-2 CAA):** The Phoenix went 2-0 with home wins over Hofstra and William & Mary. Elon set the program record for wins in the NCAA Division I era, collecting their 21st victory on Sunday. Senior **Lauren Brown** averaged 16.0 points for the week, which included a career-high 27 points against Hofstra.
- **Hofstra (11-15; 4-11 CAA):** The Pride split games last week, falling at league-leading Elon before downing UNCW on the road. Junior **Ashunae Durant** posted 13.0 points and 6.5 rebounds per game while **Marianne Kalin** averaged 8.5 points last weekend.
- **James Madison (20-6; 13-2 CAA):** The Dukes went 2-0 with victories over UNCW and Charleston to secure their 12th consecutive 20-win season. Redshirt senior **Precious Hall** averaged 27.0 points for the week. She tallied a game-high 29 points at UNCW and then had 25 points at CofC, marking her 21st and 22nd times scoring 25 points or more in her career, and her 26th straight double-figure performance.
- **UNCW (10-16; 4-11 CAA):** The Seahawks had a pair of tough losses, falling to JMU and Hofstra. **Jasmine Steele** led the Seahawks with 17.5 points per game while **Madison Raque** averaged 10.0 points per game.
- **Northeastern (10-17; 6-9 CAA):** The Huskies went 2-0 on the weekend with wins against Delaware and Towson to push their winning streak to three games. **Francesca Sally** averaged 15.5 points and 8.0 rebounds on the week, including a double-double (24pts, 12 reb) against Towson.
- **Towson (11-15; 4-11 CAA):** The Tigers dropped a pair of games to Drexel and Northeastern. Sophomore **Sianni Martin** averaged 12.5 points while **Raven Bankston** averaged 11.0 points, 4.5 assists and 3.0 steals per game. Rookie **Etalyia Vogt** averaged 9.0 points per game.
- **William & Mary (16-10; 6-9 CAA):** The Tribe had a pair of tough losses, falling in overtime to Charleston and then at Elon. William & Mary had four players averaging double figures for the week. Senior **Latrice Hunter** averaged 11.0 points off the bench while **Abby Rendle**, **Bianca Boggs** and **Alexandra Masaquel** each averaged 10.0 points per game.

HOT SHOTS AROUND #CAAHOOPS

- Elon, James Madison and Drexel each secured a spot in the top-three in the #CAAHoops Standings which means they will receive first round byes in the upcoming CAA Championship.
- James Madison is on an eight-game winning streak and have held six of those opponents to under 60 points.
- James Madison's **Precious Hall** is ranked third in the nation in scoring at 23.6 points per game. Hall has scored in double digits in 26 straight games, posting 20+ points 16 times and 30+ points four times and 40+ points twice.
- Hall is the CAA's career active scoring leader with 2,120 points, which ranks her fifth all-time in league history. She's two points away from sole possession of fourth place.
- JMU's **Amber Porter** has made her last 17 free-throw attempts, including a perfect 10-for-10 showing in the fourth quarter at Charleston on February 19.
- Elon has a strength of schedule of 59 (with a non-conference SOS of 47).
- The Phoenix have won 11 games away from home, the most in the CAA this season.
- Drexel is on its second five-game winning streak of the season. This is the first ever in which the Dragons have had two winning streaks of at least five-games in a single season.
- Drexel point guard **Meghan Creighton** is just the fourth player in CAA history to reach 1,000 points, 500 assists and 400 rebounds during their career. The last player to accomplish the feat was VCU's Rochelle Luckett (1999-02).
- Senior **Sarah Curran** has scored in double figures in 23 of 26 games.
- Hofstra's **Ashunae Durant** grabbed 21 rebounds against UNCW on January 20, the most in the CAA this season. Durant has posted 14 double-doubles this season. She's averaging 10.9 rebounds which ranks her 13th in the nation.
- Hofstra senior **Krystal Luciano** recorded the first-ever triple-double for the Pride, finishing with 21 points, 10 rebounds and 10 assists against UNCW on February 19. It was the second triple-double in the CAA this season.
- Cougars senior **Breanna Bolden** has made 38 of her last 40 free throw attempts. Her streak of 25 straight free throws made was snapped on February 12.
- Bolden is the CAA's career active leader in steals with 329, which ranks her seventh all-time in CAA history. Bolden is also CofC's all-time leading scorer (1,600).
- William & Mary's **Abby Rendle** moved into fifth all-time in CAA history with 212 career blocks and is just two away from fourth. She's only the eighth player in CAA history to reach the 200-block milestone.
- Rendle's 91 blocks this season are ranked fourth on the CAA single season charts. The last player to swat 90+ shots in a single season was Hofstra's Jess Fuller who had 97 in 2008-9 and 103 in 2009-10.
- The Tribe has blocked 13 shots three times this season which is tied for eighth on the CAA single game chart.
- Tribe senior **Marlena Tremba** has made 273 three-point field goals and is tenth on the CAA career chart.

CAA REVERSES OUTCOME OF TWO GAMES

- On February 2, Colonial Athletic Association Commissioner Joe D'Antonio announced his decision to reverse the outcome of a pair of conference games involving the College of Charleston, William & Mary and UNCW women's basketball teams due to the use of improper basketballs.
- The improper balls were used in the College of Charleston's home victories over William & Mary on January 6, and UNCW on January 8.
- The official results, team records (standings) and statistics from the games will not change per NCAA policy. However, William & Mary and UNCW will be awarded a win and College of Charleston will be charged with two losses for purposes of seeding the 2017 CAA Women's Basketball Championship.
- The complete CAA statement can be found on CAASports.com.

ROLLING ON 20s

- Elon, Drexel and James Madison have each secured 20-win seasons.
- The Phoenix has recorded just their second-ever 20-win season in their NCAA Division I history and surpassed the 20-win mark for just the first time. The only other time was in 2010-11 when the Phoenix went 20-13 overall.
- The Dragons have reached the 20-win milestone for the sixth time in program history and the fourth time under Head Coach **Denise Dillon**. It is just the fourth time that the Dragons have 20 wins before the end of the regular season, and they will have three opportunities to tie or surpass the program record of 21 wins before the start of postseason play.
- The Dukes have notched their 12th consecutive 20-win season.
- The CAA record for consecutive 20-win seasons stands at 17, which was achieved by Old Dominion from 1991-92 until 2007-08.

CAA CHAMPIONSHIP HEADS TO CAMPUS

- The 2017 CAA Women's Basketball Championship will be held, March 8-11, at the JMU Convocation Center in Harrisonburg, Va., The top six teams receive first round byes.
- Beginning with the 2017 CAA Women's Basketball Championship, the postseason event returns to campus sites for the next three seasons.
- James Madison** hosting in 2017, **Drexel** hosting in 2018, and **Delaware** hosting in 2019.
- The CAA Women's Basketball Championship has been held at 10 different sites in the league's 31 years.
- The tournament was last held on campus in 2010 before moving to the Show Place Arena in 2012.
- James Madison** has hosted the CAA Championship on six occasions, with the last time coming in 2010. Delaware has hosted the CAA Championship twice in 2007 and 2008. This will be the first time Drexel has hosted CAA postseason action.

#CAAHOOPS IN THE RPI

- College Basketball News RPI:** After 11 straight weeks of being rated eighth, the CAA dropped one spot to No. 9 in the conference RPI on February 20. Elon moved up to 25, James Madison remained at 39 while Drexel moved up to 54.
- NCAA.com RPI:** Through games on February 19 three CAA teams are in the top-100. Elon is rated at No. 25 while James Madison (39) and Drexel (54) As a conference, the CAA has an RPI of 9.

#CAAHOOPS IN THE MID-MAJOR RANKINGS

- College Insider Mid-Major Poll:** Three teams appeared in the College Insider Mid-Major Poll while one received votes on February 14. James Madison moved up three spots to No. 5 while moved down three spots to No. 8. Drexel went to No. 20.
- ESPN.com/Graham Hays Mid-Major Rankings:** Two CAA teams were ranked among the top-10 mid-major programs by **ESPN.com's Graham Hays** on February 15. Elon appeared for the second week, coming in at No. 8 while James Madison moved up four spots to No. 5 in its second week being ranked. On January 4, Drexel was recognized as the top mid-major team.

NATIONAL NOTICE

- William & Mary is ranked third in the country in blocks per game (6.6) and third in total blocks (171) led by **Abby Rendle**, who is fifth with 3.50 blocks a night.
- Drexel point guard **Meghan Creighton** is third in three-point field goal percentage (.483).
- The Dragons are ranked in nine different team categories including seventh in three-pointers made per game (9.2), 11th in scoring defense (54.4) and 12th in fewest turnovers per game (12.3).
- Two CAA players are in the top-15 in steals. CofC's **Breanna Bolden** is fifth in total steals (94) and sixth in steals per game (3.62) while Towson's **Raven Bankston** is 13th in total steals (81) and 14th steals per game (3.12).
- Hofstra's **Ashunae Durant** is 13th in rebounds per game (10.9), ninth in double-doubles (15) and fourth in offensive rebounds per game (5.0).
- Pride point guard **Krystal Luciano** is 17th in assists per game (6.2).
- Northeastern's **Jess Genco** is second in minutes played per game (38.52).
- Additional NCAA Statistical rankings can be found on page 7.

HELPING THEM OUT

- Drexel's **Meghan Creighton** dished out her 500th career assist on January 20, and is the second Dragon in program history to reach the mark.
- Northeastern's **Jess Genco** recorded her 200th career assist against Delaware on January 20.
- Hofstra's **Krystal Luciano** has dished out 10+ assists four times this season. She handed out 11 at Sacramento State and 10 against UMass, which included the 400th of her career. She handed out 10 against CofC then 10 at UNCW, which included the 500th of her career.
- William & Mary's **Jenna Green** picked up 11 assists at Charleston. She also dished out her 200th assist on January 27 against Delaware.

STELLAR GAMES

10+ Rebound Game Leaders (min. 2 gms)

Ashunae Durant (HOF)	18
Nicole Enabosi (UD)	14
Rebekah Banks (UNCW)	10
Breanna Bolden (COFC)	9
Tanisha Brown (COFC)	9
Francesca Sally (NU)	9
Jordan Henry (UNCW)	8
Alexandra Masaque (WM)	8
Shay Burnett (ELON)	7
Sandra Dongmo (HOF)	5
Mary Cuevas (TOW)	4
Malaya Johnson (ELON)	4
Jenifer Rhodes (ELON)	4
Kamiah Smalls (JMU)	4
Brianna Boyd (COFC)	3
Tasia Butler (JMU)	3
Jenny DeGraaf (UNCW)	3
Sydni Epps (HOF)	3
Jordyn Smith (TOW)	3
Savannah Felgemacher (JMU)	2
Gabby Giaccone (NU)	2
Maia Lee (TOW)	2
Claudia Ortiz (NU)	2
Abby Rendle (WM)	2
Sara Woods (DREX)	2

20+ Rebound Game Leaders

Ashunae Durant (HOF)	1
----------------------	---

20+ Point Game Leaders (min. 2 gms)

Precious Hall (JMU)	16
Breanna Bolden (COFC)	11
Ashunae Durant (HOF)	8
Raven Bankston (TOW)	5
Shay Burnett (ELON)	5
Sarah Curran (DREX)	5
Jessica Pellechio (DREX)	5
Francesca Sally (NU)	5
Tanisha Brown (COFC)	4
Nicole Enabosi (UD)	4
Sianni Martin (TOW)	4
Meghan Creighton (DREX)	3
Claudia Ortiz (NU)	3
Erika Brown (UD)	2
Lauren Brown (ELON)	2
Krystal Luciano (HOF)	2
Madison Raque (UNCW)	2
Marlena Tremba (WM)	2

30+ Point Game Leaders

Precious Hall (JMU)	4
Raven Bankston (TOW)	3
Meghan Creighton (DREX)	1
Jessica Pellechio (DREX)	1

40+ Point Game Leaders

Precious Hall (JMU)	2
---------------------	---

10+ Assist Game Leaders

Krystal Luciano (HOF)	4
Jenna Green (WM)	1
Marlena Tremba (WM)	1

5+ Block Game Leaders

Abby Rendle (WM)	5
Amber Porter (JMU)	2
Sandra Dongmo (HOF)	1
Jordan Henry (UNCW)	1
Malaya Johnson (ELON)	1
Makeda Nicholas (UD)	1

10+ Block Game Leaders

Abby Rendle (WM)	1
------------------	---

INDIVIDUAL GAME HIGHS

Points

Precious Hall (JMU) at Rutgers (12/5)	46
Precious Hall (JMU) at Elon (1/20)	41
Precious Hall (JMU) vs Tennessee (11/11)	39
Precious Hall (JMU) vs Wake Forest (12/31)	35
Raven Bankston (TOW) vs UMass Lowell (11/11)	31
Raven Bankston (TOW) vs Delaware (1/29)	31
Jessica Pellechio (DREX) vs Penn State (11/11)	30
Raven Bankston (TOW) vs Cornell (11/19)	30
Meghan Creighton (DREX) vs UNCW (2/12)	30

Field Goals Made

Precious Hall (JMU) vs Tennessee (11/11)	15
Precious Hall (JMU) at Rutgers (12/5)	15

Field Goal Attempts

Precious Hall (JMU) vs Tennessee (11/11)	35
Precious Hall (JMU) at Rutgers (12/5)	29

Field Goal Pct.

Alexandra Masaquel (WM) vs Hofstra (2/7)	1.000 (8-8)
Ra'Shika White (ELON) at North Carolina (12/4)	.889 (8-9)
Malaya Johnson (ELON) at CoFC (1/2)	.889 (8-9)
Nicole Enabosi (UD) at CoFC (1/22)	.889 (8-9)

3pt Field Goals Made

Meghan Creighton (DREX) vs UNCW (2/12)	10
Jessica Pellechio (DREX) vs Penn State (11/11)	8
Madison Raque (UNCW) vs Catawba (12/19)	8

3pt Field Goal Attempts

Jessica Pellechio (DREX) at CoFC (2/3)	16
Jessica Pellechio (DREX) vs Penn State (11/11)	15
Jessica Pellechio (DREX) at Vanderbilt (11/16)	15
Precious Hall (JMU) vs Hofstra (2/3)	15

3pt Field Goal Pct.

Jessica Pellechio (DREX) at Northeastern (1/8)	.857 (6-7)
Jess Genco (NU) vs Boston University (11/11)	.778 (7-9)

Free Throws Made

Ashunae Durant (HOF) at James Madison (1/6)	12
Nicole Enabosi (UD) vs Georgetown (12/4)	11
Brittani Tarr (TOW) vs Norfolk St. (12/29)	11
Claudia Ortiz (NU) vs Towson (1/6)	11

Free Throw Attempts

Nicole Enabosi (UD) at Hofstra (1/15)	18
Nicole Enabosi (UD) vs Georgetown (12/4)	14
Ashunae Durant (HOF) at James Madison (1/6)	14
Precious Hall (JMU) at UNCW (2/17)	14

Free Throw Pct. (min. 8 made)

Amber Porter (JMU) at CoFC (2/19)	1.000 (10-10)
Raven Bankston (TOW) vs Coppin St. (12/3)	1.000 (8-8)
Francesca Sally (NU) at Denver (12/20)	1.000 (8-8)
Maureen Taggart (NU) vs Towson (1/6)	1.000 (8-8)
Claudia Ortiz (NU) vs Elon (1/27)	1.000 (8-8)
Breanna Bolden (CoFC) vs. Towson (2/5)	1.000 (8-8)

Rebounds

Ashunae Durant (HOF) vs UNCW (1/20)	21
Ashunae Durant (HOF) at Sacramento St. (11/25)	17
Alexandra Masaquel (WM) at CoFC (1/6)	17
Nicole Enabosi (UD) vs James Madison (1/13)	17

Assists

Krystal Luciano (HOF) at Sacramento St. (11/25)	11
Jenna Green (WM) at CoFC (1/6)	11
Krystal Luciano (HOF) vs UMass (12/7)	10
Krystal Luciano (HOF) vs CoFC (2/10)	10
Marlena Tremba (WM) vs CoFC (2/17)	10
Krystal Luciano (HOF) at UNCW (2/19)	10

Steals

Breanna Bolden (COFC) vs Charlotte (11/13)	8
Alexandra Masaquel (WM) vs St. John's (11/13)	8
Tanisha Brown (COFC) at Delaware (1/22)	8

Blocks

Abby Rendle (WM) vs East Carolina (12/28)	10
Abby Rendle (WM) vs Mount St. Mary's (12/18)	7

MESSSED AROUND AND GOT A TRIPLE-DOUBLE

- There have been two triple-doubles in the CAA this season.
- Hofstra senior **Krystal Luciano** recorded the first-ever triple-double for the Pride finishing with 21 points, 10 rebounds and 10 assists at UNCW on February 19.
- It was the first points-rebounds-assists triple-double since **Abby Redick** of Drexel had 12 points, 10 rebounds, 12 assists on January 16, 2014 against William & Mary.
- William & Mary center **Abby Rendle** posted her second career triple-double with 14 points, 11 rebounds and 10 blocks against East Carolina on December 28.
- Rendle posted the Tribe's first triple-double in program history last season.
- There have only been two points-rebounds-blocks triple-doubles since 2006; Rendle holds both of those.

COACHES CORNER

- Drexel Head Coach **Denise Dillon** recorded her 250th career win on February 10 in the Dragons' victory over William & Mary.
- Head Coach **Tina Martin** picked up her 400th career victory with the win against Hofstra on January 15. Martin, who is in her 21st season, currently holds a 406-235 all-time record as the winningest coach in UD basketball history.
- Elon Head Coach **Charlotte Smith** posted her 100th career victory in the Phoenix win over Drexel on January 15. Smith has guided Elon to just its second-ever 20-win season and first during her tenure. The Phoenix has won at least 18 games in four out of the last five seasons.
- UNCW Head Coach **Adell Harris** earned the 100th win of her coaching career on January 29. Harris has 39 victories at UNCW after compiling a 61-30 record in three years at Tusculum.
- Head Coach **Sean O'Regan** earned his first career victory at the helm of the James Madison in the Dukes' 83-57 victory over St. Francis Brooklyn on November 13.

HOME SWEET HOME

Home courts have been defended well this season with the home teams forging a 78-50 record.

- In non-league play, the CAA went 34-18.
- Drexel is 12-1 at the Daskalakis Athletic Center.
- James Madison have welcomed 2,000+ fans to the Convocation Center in 50 consecutive games. The Dukes are 9-2 at home this season.
- In six seasons under Head Coach **Charlotte Smith**, the Phoenix is 63-20 at Alumni Gym and have never lost more than five home games in a single season.
- The Phoenix set a women's basketball attendance record on January 20 against James Madison, welcoming 1,412 fans at Alumni Gym.
- UNCW hosted its first of two "Seahawks Tomorrow" games on December 15. More than 4,400 area elementary school students attended the game. The second game on January 6, saw 3,207 students take over Trask.

THREES PLEASE

- Drexel's **Meghan Creighton** tied a CAA single game record with 10 three-pointers against UNCW on February 10. Two other players have hit 10 threes in a single game: **Alyssa Frye** of CoFC (1/19/14) and **TJ Jordan** of ODU (2/8/07).
- Drexel hit 15 three-pointers against UNCW on February 12, tying them for the third-most in a CAA single game history.
- UNCW also hit 15 three-pointers this season against Catawba on December 19.
- Elon has hit three-pointers in all but two games over the last six seasons. The only two occurrences came on January 22, 2016 against College of Charleston (0-for-14) and February 9, 2013, at Chattanooga (0-for-12).

MAKE IT 1,000

- On February 10, Elon's **Jenifer Rhodes** and Drexel's **Meghan Creighton** both scored their 1,000th career points in their respective games. Rhodes is the third Phoenix to reach the milestone this season while Creighton is the second Dragon this year to achieve it.
- Elon junior **Shay Burnett** posted her 1,000th career point on February 5 at UNCW, finishing with 23 points on the day.
- Hofstra junior **Ashunae Durant** notched her 1,000th career point on January 29 against Elon. She finished the day with 17 points.
- Elon senior **Lauren Brown** notched her 1,000th career point in the victory at William & Mary on January 22, finishing with 10 points, including the game-winning free throws.
- Drexel senior **Jessica Pellechio** reached the 1,000 career point milestone with a 20-point outing at Northeastern on January 8.

WE'LL TAKE PRECIOUS HALL FOR 2000

- James Madison's **Precious Hall** became the eighth player in CAA history to reach score 2,000 point when she hit her historic bucket on a three-pointer at Hofstra on February 3.
- The last CAA player to hit 2,000 was Hofstra's **Shante Evans** during 2012-13.
- Hall is just the third Duke to reach the milestone behind **Tamera Young** (2,121) and **Dawn Evans** (2,667).

BIG ON THE BOARDS

- Hofstra's **Ashunae Durant** grabbed 21 rebounds against UNCW on January 20, the most in the CAA this season.
- The 21 rebounds are tied for sixth most in CAA single-game history, a mark that was achieved last season.
- The CAA single game record for rebounds is 24 set by American's **Mary Klima** in 1994.

40 IS THE NEW 30

- JMU's **Precious Hall** scored 46 points in the double overtime at Rutgers. It was the first 40+ game in the CAA since February 26, 2015 when UNCW's Brie Mobley had 46 points against Delaware. The Seahawks' Kelva Atkins also scored 40 points that season.
- Hall recorded her second such effort on January 20 at Elon, tallying 41 points.
- Hall is one of two players in CAA history to score 40+ points twice in a single season. Elena Delle Donne is the other one. She scored 40+ points four times during the 2011-12 season.
- Hall is one of three players in CAA history to have multiple 40-point games in a career. Delle Donne had six 40-point games in her career. Gabriela Marginean (Drexel) had three 40-point games.

THE BIG 3-0

Four players registered 30-point efforts.

- Drexel's **Meghan Creighton** posted a career-high 30 points against UNCW on February 12 after going 10-for-14 from three-point range.
- Towson's **Raven Bankston** posted 31 points in the 90-56 win over UMass Lowell and then delivered 30 points in the 68-63 win over Cornell. Bankston then notched 31 points at Delaware on January 29.
- Drexel's **Jessica Pellechio** dropped in a career-high 30 points, including eight three-pointers, in the 83-60 win against Penn State.
- JMU's **Precious Hall** poured in 39 points in the loss to No. 13/14 Tennessee. She also had 35 points in the win over Wake Forest.

THANKS FOR THE CHARITY

- Drexel went 22-for-22 from the free throw line against Penn State on November 11. The percentage tied the CAA single record, but the Dragons are the only team to go 22-for-22.
- The Dragons have also gone 12-for-12 and 11-for-11 from the line this season.
- James Madison had a perfect day on the line at William & Mary on January 29, connecting on all 18 free throw attempts.
- Delaware made a season-best 34 free throws against Towson on January 29. The Blue Hens attempted a season-high 40 free throws.

BLOCK PARTY

- William & Mary's **Abby Rendle** tied a career-high with 10 blocked shots against East Carolina on December 28. It also tied the second-highest single game total in CAA history. Former ODU standout Marquitta Head holds the record (11).
- Rendle's 91 blocks this season are ranked fourth on the CAA single season charts. The last player to swat 90+ shots in a single season was Hofstra's Jess Fuller who had 97 in 2008-9 and 103 in 2009-10.
- The CAA single season blocking record is 110, set by Amy Dorsett during the 1996-97 season.
- William & Mary has blocked 13 shots three times this season against Mount St. Mary's (12/18), East Carolina (12/28) and CofC (2/17). The 13 blocks are tied for eighth most in CAA single-game history.
- Elon holds the single game record with 17 blocks which was set against ETSU in 2015.

#CAAHOOPS TV PACKAGE ON THE ASN

- The CAA Women's Basketball television package features five games on the American Sports Network.
- The television package resumes on February 12 with a doubleheader.
- Elon, James Madison, and Drexel will be featured twice while Delaware, Hofstra and William & Mary will also make an appearance.
- For the complete women's basketball television second, please see page 11.

#CAAHOOPS ON CAMPUS

- The #CAAHoops On Campus series features five campuses to get to know student-athletes and experience game day. Video features are available on all of the CAA's social media accounts as well as CAASports.com.
- The crew has been On Campus at Towson, featuring Shanea Butler, Delaware, featuring Nicole Enabosi, Northeastern, featuring the team's "Love. Empowers." campaign, Hofstra, featuring its international players, and Elon, featuring Lauren Brown and her work with Elon BrainCARE.

SOLID STARTS

- William & Mary wrapped up non-league play with a 10-1 record, setting the program record for wins. Last season, the Tribe set the program's best start when they opened the campaign 11-2 and has surpassed that start.
- At 12-3, the Dragons got off to its best 15-game start in program history. Drexel is 14-4 for just the second time ever.
- The Dragons had a perfect month of December, going 6-0, including four road victories. It was the Dragons' first undefeated month during the regular season since going 5-0 in November to start the 2010-11 season.
- Towson got off to a 5-0 start, its best start to a season since the 2008-09 squad also opened the year with five straight victories.
- The Tigers wrapped up non-conference play above .500 and its most league wins since the 2011-12 squad went 9-3. The seven non-league wins were also the most under Head Coach **Niki Reid Geckeler**.
- Delaware got off to a 4-0 start the year for the first time since 2010-11 when the Elena Delle Donne led team went 31-2 after a 10-0 start.

#CAAHOOPS IN NON-CONFERENCE PLAY

- The CAA went 66-46 in non-league play.
- The CAA went 11-1 against the A-10.
- The CAA went 4-0 against the Ivy League.
- From November 14-20, the CAA went 13-7, notching victories over 11 different conferences, including the a win over the Big Ten and pairs of wins over the A-10 and Big South.
- The CAA went a combined 61-56 against non-conference opponents in 2015-16.

USBWA NATIONAL FRESHMAN OF THE WEEK

- Drexel's **Ana Ferariu** was named the USBWA National Freshman of the Week on December 20. Ferariu, who also earned CAA Rookie of the Week honors, came off the bench in the second half to score 18 points in 13 minutes in the win against Saint Joseph's.

TEAM GAME HIGHS

Points

COFC at Winthrop (11/16)	95
ELON vs King (12/28)	93
JAMES MADISON vs Hofstra (1/6)	93

Margin of Victory

ELON vs King (12/28)	46 (93-47)
DREXEL at Lafayette (12/21)	42 (81-39)

Field Goals Made

COFC at Winthrop (11/16)	38
WILLIAM & MARY vs Delaware St. (11/28)	34
ELON vs King (12/28)	34
JAMES MADISON vs Hofstra (1/6)	34

Field Goals Attempts

JAMES MADISON vs St. Francis Brooklyn (11/13)	81
HOFSTRA at Sacramento St. (11/25)	80

Field Goal Pct.

WILLIAM & MARY vs Hofstra (2/7)	.561 (32-57)
DREXEL vs Northeastern (1/29)	.547 (29-53)
DREXEL vs UNCW (2/12)	.547 (29-53)

3pt Field Goals Made

UNCW vs Catawba (12/19)	15
DREXEL vs. UNCW (2/12)	15
DREXEL at CofC (2/3)	13

3pt Field Goal Attempts

DREXEL vs UMass (12/28)	38
DREXEL at CofC (2/3)	36
DREXEL at Vanderbilt (11/16)	35

3pt Field Goal Pct. (min. 10 3FGM)

DREXEL vs UNCW (2/12)	.577 (15-26)
UNCW vs Catawba (12/19)	.500 (15-30)
NORTHEASTERN vs Boston Univ. (11/11)	.500 (12-24)
UNCW at Georgia State (11/20)	.500 (11-22)

Free Throws Made

DELAWARE at Towson (1/29)	34
JAMES MADISON at CofC (2/19)	27

Free Throw Attempts

DELAWARE at Towson (1/29)	40
JAMES MADISON at Rutgers (12/5)	34
ELON at CofC (1/13)	34

Free Throw Pct. (min. 10 FTA)

DREXEL vs Penn State (11/11)	1.000 (22-22)
JAMES MADISON at William & Mary (1/29)	1.000 (18-18)
DREXEL at Elon (1/15)	1.000 (12-12)
DREXEL vs Elon (1/6)	1.000 (11-11)

Rebounds

ELON vs Delaware (1/8)	62
JAMES MADISON vs St. Francis Brooklyn (11/13)	55
ELON vs Rutgers (11/14)	55
ELON vs William & Mary (2/19)	55

Assists

UNCW vs Catawba (12/19)	25
WILLIAM & MARY vs Hofstra (2/7)	24

Steals

COFC at Winthrop (11/16)	19
WILLIAM & MARY at Towson (1/20)	18

Blocks

WILLIAM & MARY vs Mount St. Mary's (12/18)	13
WILLIAM & MARY vs East Carolina (12/28)	13
WILLIAM & MARY vs CofC (2/17)	13

DOUBLE-DOUBLES

Points-Rebounds

Ashunae Durant (HOF)	15
Nicole Enabosi (UD)	13
Breanna Bolden (COFC)	9
Tanisha Brown (COFC)	9
Francesca Sally (NU)	9
Alexandra Masaquel (WM)	7
Shay Burnett (ELON)	6
Jordan Henry (UNCW)	4
Jenifer Rhodes (Elon)	3
Kamiah Smalls (JMU)	3
Brianna Boyd (COFC)	2
Jenny DeGraaf (UNCW)	2
Sandra Dongmo (HOF)	2
Abby Rendle (WM)	2
Essence Baucom (ELON)	1
Tasia Butler (JMU)	1
Mary Cuevas (TOW)	1
Sydni Epps (HOF)	1
Gabby Giacone (NU)	1
Bailey Greenberg (DREX)	1
Precious Hall (JMU)	1
Malaya Johnson (ELON)	1
Maia Lee (TOW)	1
Makeda Nicholas (UD)	1
Claudia Ortiz (NU)	1
Amber Porter (JMU)	1
Jordyn Smith (TOW)	1
Ra'Shika White (ELON)	1

Points-Assists

Krystal Luciano (HOF)	2
-----------------------	---

TRIPLE-DOUBLES

Points-Rebounds-Assists

Krystal Luciano (HOF)	1
-----------------------	---

Points-Rebounds-Blocks

Abby Rendle (WM)	1
------------------	---



Apply for Media Credentials at:
sportssystem.com/CAA/women

SO YOU WANT TO BE A COACH

- Three CAA student-athletes were chosen for the 15th annual "So You Want To Be A Coach."
- College of Charleston's **Nola Henry**, Elon's **Essence Baucom** and UNCW's **Amber Reeves** will represent the CAA at the three-day workshop held March 29-31 in conjunction with the WBCA National Convention in Dallas.
- Participants will learn about recruiting, the administrative side to coaching, how to get hired, skill development, the importance of knowing the rules, and how to balance work and life.
- Qualified candidates must have exhausted their final year of basketball eligibility. In addition, the candidate's head coach has to nominate them and must be an active WBCA member. Each participant is selected based on her academics, contributions to women's basketball on and off the court, professional resume and a written recommendation from their head coach.

ALLSTATE WBCA GOOD WORKS TEAM

- Three CAA student-athletes were nominated for the 2017 Allstate WBCA Good Works Team.
- William & Mary's **Alexandra Masaquel**, Hofstra's **Sydni Epps** and Delaware's **Hannah Jardine** earned the honor.
- This esteemed award honors an outstanding group of student-athletes who represent the sport's finest in the areas of community service and leadership among their peers.

USBWA ANN MEYERS DRYSDALE AWARD
MIDSEASON WATCH LIST

- James Madison's **Precious Hall** was named to USBWA Ann Meyers Drysdale Award Midseason Watch List.
- The award honors the nation's best women's basketball player and Hall is one of 28 to be on the midseason watch list.

NAISMITH TROPHY WATCH LIST

- James Madison's **Precious Hall** was one of 50 players across the country named to the 2017 Naismith Women's College Player of the Year Watch List.
- This marks the second appearance on the Naismith Watch List for Hall, who was included on the 2014-15 Midseason 30 as a junior.

LIEBERMAN AWARD WATCH LIST

- Drexel senior point guard **Meghan Creighton** was named one of 20 watch list candidates for the 2017 Nancy Lieberman Award.
- In its 17th year, the Nancy Lieberman Award recognizes the top point guard in women's NCAA Division I college basketball. Candidates exhibit the floor leadership, play-making and ball-handling skills of the Hall of Famer.

THANKSGIVING TOURNAMENT TIME

- Northeastern and James Madison both competed at the 2016 Cancun Challenge in Puerto Aventuras, Mexico, November 24-26.
- The Dukes topped Idaho State, 83-53, but fell to Iowa, 90-75, in the Riviera Division in pre-set matchups. Guard **Precious Hall** earned a spot on the All-Riviera Tournament Team. It was JMU's fourth trip to the tournament.
- Northeastern played in the tournament's round-robin Mayan Division along with Stanford (L, 74-45), Purdue (L, 79-54), and Wichita State (L, 87-73). Sophomore guard **Jess Genco** earned a spot on the All-Mayan Tournament Team.
- The annual UNCW Hampton Inn Thanksgiving

Classic was held November 26-27. The Seahawks fell to Providence (65-49) and La Salle (64-48) while also welcoming Miami (Ohio) to Trask Coliseum.

- Delaware headed the West Coast for the Cal State Northridge Thanksgiving Classic. The Blue Hens fell to No. 23 Michigan State, 81-64, and then to Detroit Mercy, 66-64.

#CAAHOOPS IN THE PRESEASON WNIT

Elon was the CAA's representative in the 2016 Pre-season WNIT.

- The Phoenix drew a road game at Green Bay in the first round on November 11, falling 74-53.
- Elon traveled to Mount Pleasant, Mich. for the consolation rounds.
- In their first consolation game on November 18, the Phoenix downed Eastern Washington, 76-55, behind three double-digit scoring efforts.
- Elon closed out action by knocking off host Central Michigan, 71-57. The Phoenix was led by rookie **Jada Graves'** 20-point night.
- Elon is one of 16 teams that was selected to participate in the field: Abilene Christian (Southland); Central Michigan (MAC); Colorado State (MWC); Eastern Washington (Big Sky); Fordham (Atlantic 10); Furman (Southern); Green Bay (Horizon); Little Rock (Sun Belt); Missouri (SEC); Nebraska (Big Ten); North Texas (C-USA); Notre Dame (ACC); Omaha (Summit); UT-Rio Grande Valley (WAC); and Washington (Pac-12).
- Since 1997, CAA teams are 15-16 in Preseason WNIT action.

TIP-OFF TIME

- The CAA went a combined 9-4 on opening weekend.
- The 2016-17 season tipped off on November 11 with seven games, six of which were home games. The CAA went 5-2 in those contests, including 5-1 at home.

LOOK WHO'S BACK

- Seven of the 15 All-CAA honorees from last year return for the 2016-17 season, including the two-time CAA Defensive Player of the Year, **Breanna Bolden** from CofC. The 2014-15 CAA Player of the Year, **Precious Hall** of James Madison, returns for her final season after missing the entirety of 2015-16 with an injury.
- The offense in the CAA will be plentiful once again this season as 10 of the top-20 scorers from 2015-16 will be back on the hardwood for their respective teams.

#CAAHOOPS PRESEASON RUNDOWN

- James Madison was predicted to finish atop the conference for the fourth consecutive season.
- It was close voting at the top with the Dukes as the overall favorite with 76 points, Elon in second with 70 points and Drexel in third (68).
- After missing all of the 2015-16 season with an injury, redshirt senior guard **Precious Hall** is back to lead James Madison and was tabbed as the 2016-17 CAA Preseason Player of the Year. During 2014-15, Hall averaged 20.8 points and 5.1 rebounds per game and was the unanimous choice for CAA Player of the Year.
- It was also close among the next four teams. Hofstra (49) was picked fourth, Delaware and William & Mary were tied for fifth with 47 points apiece while Northeastern was seventh with 41 points. Rounding out the 10 teams were College of Charleston (19), UNCW (17) and Towson (16).

CAA IN THE COLLEGE BASKETBALL NEWS RPI

	D5	D12	D19	D26	J2	J9	J16	J23	J30	F6	F13	F20	F27	M6
CAA	8	8	8	8	8	8	8	8	8	8	8	9		
College of Charleston	196	191	190	181	180	151	167	172	192	178	204	194		
Delaware	129	128	125	143	146	144	135	144	115	112	117	128		
Drexel	30	23	21	38	50	67	64	67	69	73	68	54		
Elon	38	36	36	27	28	24	22	24	27	26	32	25		
Hofstra	122	97	97	106	129	166	142	164	186	181	189	180		
James Madison	174	140	135	123	92	87	77	71	50	41	39	39		
UNCW	173	151	198	204	194	237	237	241	220	220	206	222		
Northeastern	268	278	232	227	230	173	155	158	157	182	180	154		
Towson	161	175	180	169	179	167	183	130	159	162	191	202		
William & Mary	143	132	122	135	105	97	101	115	130	134	128	149		

College Basketball News
(February 20)

National (Top-25)

Rank	Team	Conference
1	UConn	American
2	Notre Dame	ACC
3	Mississippi St.	SEC
4	South Carolina	SEC
5	Oregon St.	Pac-12
6	Washington	Pac-12
7	Duke	ACC
8	Texas	Big 12
9	Baylor	Big 12
10	Stanford	Pac-12

11	Florida St.	ACC
12	UCLA	Pac-12
13	Louisville	ACC
14	Oklahoma	Big 12
15	Kentucky	SEC
16	Creighton	Big East
17	Tennessee	SEC
18	Miami (FL)	ACC
19	DePaul	Big East
20	Texas A&M	SEC
21	Maryland	Big Ten
22	Missouri	SEC
23	Temple	AAC
24	Kansas St.	Big 12
25	Elon	Colonial

Conferences Only (Top-15)

Rank	Conference
1	Pac-12
2	SEC
3	ACC
4	Big 12
5	American
6	Big Ten
7	Big East
8	Ivy League
9	Colonial
10	MAC
11	Summit
12	Atlantic-10
13	Mountain West
14	West Coast
15	Conference USA

CAA IN THE NCAA.COM RATING PERCENTAGE INDEX (RPI)

	D5	D12	D19	D26	J2	J9	J16	J23	J30	F6	F13	F20	F27	M6
CAA	8	8	8	8	8	8	8	8	8	8	8	9		
College of Charleston	N/A	192	189	181	180	151	172	172	192	178	204	194		
Delaware	N/A	129	124	143	146	144	144	144	115	112	117	128		
Drexel	N/A	23	20	38	50	67	67	67	69	73	68	54		
Elon	N/A	37	36	27	28	24	24	24	27	26	32	25		
Hofstra	N/A	96	97	106	129	165	164	164	186	181	189	180		
James Madison	N/A	140	135	123	91	87	71	71	50	41	39	39		
UNCW	N/A	152	197	204	194	236	241	241	220	220	206	222		
Northeastern	N/A	279	232	227	230	173	158	158	157	182	180	154		
Towson	N/A	175	179	169	179	166	130	130	159	162	191	202		
William & Mary	N/A	132	121	135	105	97	115	115	130	134	128	149		

NCAA.com RPI Ratings
(February 20)

National (Top-50)

Rank	Team	Conference
1	UConn	American
2	Notre Dame	ACC
3	Mississippi St.	SEC
4	South Carolina	SEC
5	Oregon St.	Pac-12
6	Washington	Pac-12
7	Duke	ACC
8	Texas	Big 12
9	Baylor	Big 12
10	Stanford	Pac-12
11	Florida St.	ACC
12	UCLA	Pac-12
13	Louisville	ACC
14	Oklahoma	Big 12

15	Kentucky	SEC	33	South Dakota St.	Summit
16	Creighton	Big East	34	South Fla.	AAC
17	Tennessee	SEC	35	Drake	MVC
18	Miami (FL)	ACC	36	Auburn	SEC
19	DePaul	Big East	37	Michigan	Big Ten
20	Texas A&M	SEC	38	North Carolina St.	ACC
21	Maryland	Big Ten	39	James Madison	Colonial
22	Missouri	SEC	40	Marquette	Big East
23	Temple	AAC	41	Central Mich.	MAC
24	Kansas St.	Big 12	42	Michigan St.	Big Ten
25	Elon	Colonial	43	Quinnipiac	MAAC
26	Ohio St.	Big Ten	44	Tulane	AAC
27	Harvard	Ivy League	45	Virginia	ACC
28	Arizona St.	Pac-12	46	Iowa	Big Ten
29	Green Bay	Horizon	47	Indiana	Big Ten
30	LSU	SEC	48	GWU	Atlantic 10
31	Oregon	Pac-12	49	Little Rock	Sun Belt
32	Syracuse	ACC	50	Ohio	MAC

NCAA STATISTICAL RANKINGS
(thru games on 2/19)

NCAA TEAM RANKINGS (Top 25)

Category	Team	Rank	Stat
A-T0 Ratio	Drexel	25	1.22
Blocked Shots	William & Mary	2	171
Blocked Shots/g	William & Mary	3	6.6
Fewest Fouls	Delaware	11	354
Fewest Turnovers	Drexel	10	321
Off. Rebounds/g	Elon	19	16
Personal Fouls/g	Delaware	13	13.6
Rebounds	Elon	15	1,139
Scoring Defense	Drexel	11	54.4
3FGs Attempted	Drexel	22	641
3FGs Made	Drexel	9	239
3FGs/g	Drexel	7	9.2
3FG Pct.	Drexel	20	37.3
Turnover Margin	Drexel	22	5.69
Turnovers/g	Drexel	12	12.3

NCAA INDIVIDUAL RANKINGS (Top 25)

Category	Player, Team	Rank	Stat
Assists	Krystal Luciano, Hofstra	19	162
Assists/g	Krystal Luciano, Hofstra	17	6.2
Blocked Shots	Abby Rendle, WM	4	91
Blocked Shots/g	Abby Rendle, WM	5	3.50
Double Doubles	Ashunae Durant, Hofstra	9	15
	Nicole Enabosi, UD	21	13
FG Attempts	Precious Hall, JMU	2	541
FG Made	Precious Hall, JMU	11	202
FT Attempts	Ashunae Durant, Hofstra	15	181
	Nicole Enabosi, UD	15	181
FTs Made	Nicole Enabosi, UD	21	131
	Ashunae Durant, Hofstra	22	127
	Precious Hall, JMU	23	126
Minutes Played	Jess Genco, NU	6	1040:00
Minutes/g	Jess Genco, NU	2	38.52
Off. Rebounds/g	Ashunae Durant, Hofstra	4	5
Points	Precious Hall, JMU	5	614
Points/g	Precious Hall, JMU	3	23.6
Rebounds	Ashunae Durant, Hofstra	13	284
Rebounds/g	Ashunae Durant, Hofstra	14	10.9
Steals	Breanna Bolden, CofC	5	94
	Raven Bankston, Towson	13	81
Steals/g	Breanna Bolden, CofC	6	3.62
	Raven Bankston, Towson	14	3.12
3FG Attempted	Precious Hall, JMU	3	251
	Jessica Pellechio, Drexel	24	207
3FG Made	Precious Hall, JMU	9	84
3FG/g	Precious Hall, JMU	9	3.23
3FG Pct.	Meghan Creighton, Drexel	3	48.3
Triple Doubles	Krystal Luciano, Hofstra	4	1
	Abby Rendle, WM	4	1

CAA WOMEN'S BASKETBALL

WEEKLY REPORT

ASSOCIATED PRESS POLL

(Week 16/February 20)

RK	TEAM	RECORD	PTS
1	Connecticut (33)	26-0	825
2	Maryland	26-1	788
3	Mississippi State	27-1	755
4	Baylor	25-2	731
5	Notre Dame	25-3	682
6	Texas	21-5	608
7	South Carolina	22-4	602
8	Florida State	24-4	583
8	Stanford	24-4	583
10	Oregon State	25-3	528
11	Washington	25-4	494
12	Ohio State	23-5	469
13	Duke	24-4	467
14	Louisville	23-6	414
15	UCLA	20-7	350
16	Oklahoma	21-6	340
17	Miami	19-7	274
18	NC State	20-7	232
19	DePaul	22-6	208
20	Syracuse	18-9	162
21	Drake	22-4	123
22	Kentucky	19-8	110
23	Temple	21-5	99
24	Missouri	19-9	62
25	Michigan	21-7	53

OTHERS RECEIVING VOTES

Texas A&M 45, Kansas State 45, Creighton 32, South Florida 27, Tennessee 9, Belmont University 7, Green Bay 4, West Virginia 4, Arizona State 3, Colorado State 2, Tulane 2, Wright State 1, LSU 1, Marquette 1

USA TODAY COACHES POLL

(Week 15/February 14)

RK	TEAM	RECORD	PTS
1	Connecticut (32)	25-0	800
2	Maryland	25-1	766
3	Mississippi State	25-1	726
4	Baylor	24-2	697
5	South Carolina	21-3	642
6	Notre Dame	23-3	626
7	Florida State	23-3	600
8	Texas	21-4	597
9	Washington	24-3	577
10	Stanford	22-4	494
11	Oregon State	23-3	464
12	Ohio State	22-5	450
13	Louisville	22-6	416
14	Duke	22-4	399
15	DePaul	22-5	328
16	UCLA	18-7	299
17	Miami	19-6	289
18	NC State	19-6	275
19	Oklahoma	20-6	214
20	Michigan	21-5	168
21	Syracuse	18-8	165
22	South Florida	20-4	129
23	Arizona State	16-9	107
24	Texas A&M	19-6	66
25	Temple	19-5	21

OTHERS RECEIVING VOTES

Drake 20, Tennessee 20, Green Bay 13, Kansas State 8, Creighton 8, West Virginia 5, Indiana 5, California 3, Northwestern 2, Oregon 1

COLLEGE INSIDER MID-MAJOR POLL

(February 14)

RK	TEAM	RECORD	PTS
1.	Drake (29)	20-4	754
2.	Gonzaga (1)	21-4	733
3.	Green Bay (1)	21-4	707
4.	South Dakota State	19-6	628
5.	James Madison	18-6	617
6.	South Dakota	20-5	587
7.	Ohio	18-5	585
8.	Elon	19-6	547
9.	Northern Iowa	18-6	504
10.	Bucknell	19-5	455
11.	Quinnipiac	20-6	440
12.	Mercer	20-5	419
13.	Stetson	21-5	383
14.	New Mexico State	18-6	330
15.	Northern Colorado	19-5	314
16.	Florida Gulf Coast	21-7	297
17.	Belmont	21-5	261
18.	New Hampshire	21-4	225
19.	Little Rock	18-7	202
20.	Drexel	18-6	141
21.	BYU	16-9	128
22.	UT Arlington	16-6	116
23.	Central Michigan	18-6	86
24.	Rider	20-6	75
25.	Wright State	20-5	69

OTHERS RECEIVING VOTES

Chattanooga 63, Troy 62, Stephen F Austin 60, Northern Illinois 49, Penn 46, Harvard 41, Jacksonville 32, IUPUI 31, Toledo 24, Ball State 22, Western Illinois 16, St Mary's 15, Buffalo 4, Long Beach St 4, UC Davis 3

CAA IN THE ASSOCIATED PRESS POLL & USA TODAY COACHES POLL

	Pre	N14	N21	N28	D5	D12	D19	D26	J2	J9	J16	J23	J30	F6	F13	F20	F27	M6	Final
College of Charleston	--/--	--/--	--/--	--/--	--/--	--/--	--/--	--/--	--/--	--/--	--/--	--/--	--/--	--/--	--/--	--/--			
Delaware	--/--	--/--	--/--	--/--	--/--	--/--	--/--	--/--	--/--	--/--	--/--	--/--	--/--	--/--	--/--	--/--			
Drexel	--/--	--/--	--/--	--/--	--/--	--/--	--/--	--/--	--/--	--/--	--/--	--/--	--/--	--/--	--/--	--/--			
Elon	--/--	--/--	--/--	--/--	--/--	--/--	--/--	--/--	--/--	--/--	--/--	--/--	--/--	--/--	--/--	--/--			
Hofstra	--/--	--/--	--/--	--/--	--/--	--/--	--/--	--/--	--/--	--/--	--/--	--/--	--/--	--/--	--/--	--/--			
James Madison	--/--	--/--	--/--	--/--	--/--	--/--	--/--	--/--	--/--	--/--	--/--	--/--	--/--	--/--	--/--	--/--			
UNCW	--/--	--/--	--/--	--/--	--/--	--/--	--/--	--/--	--/--	--/--	--/--	--/--	--/--	--/--	--/--	--/--			
Northeastern	--/--	--/--	--/--	--/--	--/--	--/--	--/--	--/--	--/--	--/--	--/--	--/--	--/--	--/--	--/--	--/--			
Towson	--/--	--/--	--/--	--/--	--/--	--/--	--/--	--/--	--/--	--/--	--/--	--/--	--/--	--/--	--/--	--/--			
William & Mary	--/--	--/--	--/--	--/--	--/--	--/--	--/--	--/--	--/--	--/--	--/--	--/--	--/--	--/--	--/--	--/--			

CAA IN THE COLLEGE INSIDER MID-MAJOR POLL

	Pre	N15	N22	N29	D6	D13	D20	D27	J3	J10	J17	J24	J31	F7	F14	F21	F28	M7	Final
College of Charleston	--	--	--	--	--	--	--	--	--	--	--	--	--	--	--				
Delaware	--	--	RV	--	--	--	--	--	--	--	--	--	--	--	--				
Drexel	25	20	15	22	17	18	14	11	10	14	15	15	16	21	20				
Elon	RV	RV	24	25	RV	RV	RV	RV	RV	24	16	12	12	5	8				
Hofstra	--	--	--	--	--	RV	RV	RV	--	--	--	--	--	--	--				
James Madison	2	5	5	6	6	7	7	9	8	9	8	13	13	6	5				
UNCW	--	--	--	--	--	--	--	--	--	--	--	--	--	--	--				
Northeastern	--	--	--	--	--	--	--	--	--	--	--	--	--	--	--				
Towson	--	--	--	RV	RV	--	--	--	--	--	--	--	--	--	--				
William & Mary	--	--	--	--	RV	RV	RV	RV	25	RV	--	--	--	--	--				

CAA ACTIVE CAREER LEADERS*

transfers are included among the active career leaders. The totals span an entire career at any NCAA Division I institution

SCORING (800+)

Precious Hall, James Madison	2120
Raven Bankston, Towson	1666
Breanna Bolden, CofC	1600
Marlena Tremba, William & Mary	1527
Sarah Curran, Drexel	1517
Erika Brown, Delaware	1335
Jessica Pellechio, Drexel	1148
Ashunae Durant, Hofstra	1129
Lauren Brown, Elon	1093
Shay Burnett, Elon	1057
Meghan Creighton, Drexel	1030
Jenifer Rhodes, Elon	1027
Alexandra Masaquel, William & Mary	967
Krystal Luciano, Hofstra	967
Hannah Jardine, Delaware	887
Francesca Sally, Northeastern	861

FIELD GOALS MADE (350+)

Precious Hall, James Madison	710
Raven Bankston, Towson	616
Sarah Curran, Drexel	611
Breanna Bolden, CofC	606
Marlena Tremba, William & Mary	478
Erika Brown, Delaware	476
Jenifer Rhodes, Elon	445
Alexandra Masaquel, William & Mary	438
Ashunae Durant, Hofstra	418
Jessica Pellechio, Drexel	396
Lauren Brown, Elon	362
Francesca Sally, Northeastern	351

FIELD GOAL PERCENTAGE
(.400/MIN 350 MADE)

Alexandra Masaquel, William & Mary	.502 (48-873)
Jenifer Rhodes, Elon	.471 (445-944)
Ashunae Durant, Hofstra	.456 (418-917)
Sarah Curran, Drexel	.448 (606-1353)
Raven Bankston, Towson	.402 (616-1531)
Francesca Sally, Northeastern	.402 (351-873)

3PT FIELD GOALS MADE (150+)

Precious Hall, James Madison	283
Jessica Pellechio, Drexel	275
Marlena Tremba, William & Mary	273
Meghan Creighton, Drexel	248
Krystal Luciano, Hofstra	156
Lauren Brown, Elon	153

Sarah Curran, Drexel	135
Hannah Jardine, Delaware	124

3PT FIELD GOAL PERCENTAGE
(MIN 150 MADE)

Meghan Creighton, Drexel	.389 (248-637)
Jessica Pellechio, Drexel	.343 (275-802)
Precious Hall, James Madison	.338 (283-838)
Marlena Tremba, William & Mary	.336 (273-813)

FREE THROWS MADE (250+)

Precious Hall, James Madison	417
Raven Bankston, Towson	349
Shay Burnett, Elon	322
Breanna Bolden, CofC	313
Erika Brown, Delaware	310
Marlena Tremba, William & Mary	298
Ashunae Durant, Hofstra	291

FREE THROW PERCENTAGE
(.750/MIN 250 MADE)

Precious Hall, JMU	.803 (417-519)
Raven Bankston, Towson	.790 (349-442)
Marlena Tremba, William & Mary	.784 (298-380)
Breanna Bolden, CofC	.762 (313-411)

REBOUNDING (500+)

Breanna Bolden, CofC	812
Ashunae Durant, Hofstra	786
Alexandra Masaquel, William & Mary	641
Shay Burnett, Elon	609
Francesca Sally, Northeastern	594
Jenifer Rhodes, Elon	581
Hannah Jardine, Delaware	573
Precious Hall, James Madison	548
Malaya Johnson, Elon	510

Sarah Curran, Drexel	489
Makeda Nicholas, Delaware	479
Meghan Creighton, Drexel	475
Jordan Henry, UNCW	473

ASSISTS (200+)

Meghan Creighton, Drexel	534
Krystal Luciano, Hofstra	509
Essence Baucom, Elon	379
Jenna Green, William & Mary	335
Marlena Tremba, William & Mary	323
Shay Burnett, Elon	322
Precious Hall, James Madison	267
Erika Brown, Delaware	261
Breanna Bolden, CofC	241
Jess Genco, Northeastern	236
Sarah Curran, Drexel	233
Latrice Hunter, William & Mary	227
Raven Bankston, Towson	203
Jasmine Steele, UNCW	203

Shiclasia Brown, CofC	188

BLOCKS (100+)

Abby Rendle, William & Mary	212
Jenifer Rhodes, Elon	124
Malaya Johnson, Elon	122
Makeda Nicholas, Delaware	112

STEALS (150+)

Breanna Bolden, CofC	329
Raven Bankston, Towson	209
Marlena Tremba, William & Mary	192
Precious Hall, James Madison	169
Krystal Luciano, Hofstra	167
Alexandra Masaquel, William & Mary	164

Jessica Pellechio, Drexel	141

GAMES PLAYED (100+)

Meghan Creighton, Drexel	135
Precious Hall, James Madison	130
Lauren Brown, Delaware	121
Krystal Luciano, Hofstra	121
Breanna Bolden, CofC	120
Erika Brown, Delaware	120
Hannah Jardine, Delaware	118
Amber Reeves, UNCW	118
Sarah Curran, Drexel	117
Sydni Epps, Hofstra	116
Marlena Tremba, William & Mary	116
Essence Baucom, Elon	115
Jennifer Rhodes, Elon	113
Jessica Pellechio, Drexel	112
Latrice Hunter, William & Mary	110
Francesca Sally, Northeastern	107
Kasey Curtis, William & Mary	100

Alexandra Masaquel, William & Mary	98

CAA ALL-TIME CAREER LEADERS

A player must have recorded all totals while playing as a member of the CAA to be included on this list

POINTS SCORED *CAREER*

PLAYER

1.	3,039	Elena Delle Donne, Delaware	2009-13
2.	2,667	Dawn Evans, JMU	2007-11
3.	2,581	Gabriela Marginean, Drexel	2006-10
4.	2,121	Tamera Young, JMU	2004-08
5.	2,120	Precious Hall, JMU	2012-present
6.	2,116	Shante Evans, Hofstra	2009-13
7.	2,112	Celeste Hill, ODU	1990-94
8.	2,092	Courtney Hurt, VCU	2008-12
9.	1,873	Kyra Kaylor, W&M	2003-08
10.	1,854	Nyree Roberts, ODU	1995-98

THREE-POINT FIELD GOALS MADE *CAREER*

PLAYER

1.	387	Dawn Evans, JMU	2007-11
2.	323	TJ Jordan, ODU	2004-08
3.	312	Narissa Suber, Drexel	2004-08
4.	309	Julie Jones, UR	1988-92
5.	304	Janine Aldridge, William & Mary	2008-13
6.	291	Kirby Burkholder, JMU	2010-14
	291	Cigi McCollin, Hofstra	2003-07
8.	287	Jasmina Rosseel, Drexel	2007-11
9.	283	Precious Hall, JMU	2012-present
10.	273	Marlena Tremba, William & Mary	2013-present

THREE-POINT FIELD GOAL PERCENTAGE *CAREER*

PLAYER (MINIMUM OF 150 MADE)

1.	43.4% (309-712)	Julie Jones, UR	1988-92
2.	41.4% (153-370)	Yolanda Settles, W&M	1992-96
3.	40.9% (206-504)	Elena Delle Donne, UD	2009-13
4.	38.9% (248-637)	Meghan Creighton, Drexel	2012-pres.
5.	38.2% (240-268)	Kamile Nacickaite, Drexel	2008-12
6.	37.2% (312-838)	Narissa Suber, Drexel	2004-08
7.	36.8% (287-779)	Jasmina Rosseel, Drexel	2007-11
8.	36.6% (191-522)	Kashaia Cannon, NU	2008-13
9.	36.2% (251-693)	Rachel Pearson, Drexel	2012-16
10.	36.0% (206-573)	Deanna Kerkhof, NU	2009-13

FREE THROW PERCENTAGE *CAREER*

PLAYER (MINIMUM OF 200 MADE)

1.	91.0% (773-849)	Elena Delle Donne, UD	2009-13
2.	88.9% (684-769)	Gabriela Marginean, Drexel	2006-10
3.	88.4% (205-232)	Ashley Feldman, NU	2005-09
4.	87.0% (336-386)	Kirby Burkholder, JMU	2010-14
5.	86.0% (251-292)	Courtnei Green, Delaware	2012-16
6.	83.8% (274-327)	Hollie Mershon, Drexel	2009-13
7.	81.5% (578-709)	Dawn Evans, JMU	2007-11
8.	81.5% (419-514)	Keri Chaconas, Mason	1992-96
9.	81.1% (284-350)	Greta Luksyte, UNCW	2006-10
10.	80.7% (321-398)	Lesley Dickinson, JMU	2004-07
10.	80.3% (407-519)	Precious Hall, JMU	2012-present

1000 POINT - 500 ASSISTS - 400 REBOUNDS CLUB

Player, School	Years	Points	Ast	Reb
Ticha Penicheiro, ODU	1995-98	1304	939	630
Rochelle Luckett, VCU	1999-02	1483	665	522
Floretta Jackson, JMU	1984-87	1111	560	475
Meghan Creighton, Drexel	2013-pres.	1030	534	475

BLOCKED SHOTS *CAREER*

PLAYER

1.	273	Elena Delle Donne, Delaware	2009-13
2.	255	Tiffany Benson, W&M	2006-10
3.	236	Trish Halpin, Mason	1997-00
4.	214	Nyree Roberts, ODU	1994-98
5.	212	Abby Rendle, W&M	2014-present
6.	210	Cody Paulk, Georgia State	2009-13
7.	208	Jess Fuller, Hofstra	2007-10
8.	203	Tiffany Green, ODU	2004-09
9.	186	Hollie Franklin, JMU	1999-02
10.	176	Amy Dorsett, UR	1993-97

STEALS *CAREER*

PLAYER

1.	591	Ticha Penicheiro, ODU	1995-98
2.	431	Kyle DeHaven, W&M/Delaware	2003-08
3.	423	Rochelle Luckett, VCU	1999-02
4.	382	Mery Andrade, ODU	1996-99
5.	342	Tyresa Smith, Delaware	2004-07
6.	332	Brittany Hollins, GSU	2005-09
7.	329	Breanna Bolden, CofC	2013-present
8.	327	Celeste Hill, ODU	1990-94
9.	295	Shanae Baker-Brice, Towson	2006-10
10.	292	Toina Coley, ECU	1988-93

CAA REGULAR SEASON/TOURNEY WINS *CAREER*

1.	353	Wendy Larry, Old Dominion	1992-2011
2.	220	Kenny Brooks, JMU	2003-16
3.	216	Tina Martin, Delaware	2002-present
4.	169	Denise Dillon, Drexel	2004-present
5.	143	Shelia Moorman, JMU	1986-97
6.	107	Krista Kilburn-Steveskey, Hofstra	2007-present
7.	102	Beth Cunningham, VCU	2004-12
8.	92	Debbie Tanneyhill, Mason	1998-2008
	92	Jim Lewis, Mason	1986-97
10.	79	Debbie Taylor, William & Mary	1999-2013

CAA SINGLE SEASON RECORDS

BLOCKED SHOTS *SEASON*

PLAYER

1.	110	Amy Dorsett, UR	1996-97
2.	103	Jess Fuller, Hofstra	2009-10
3.	97	Jess Fuller, Hofstra	2008-09
4.	91	Abby Rendle, W&M	2016-17
5.	86	Elena Delle Donne, Delaware	2011-12
6.	85	Tiffany Benson, W&M	2008-09
7.	77	Cody Paulk, Georgia State	2012-13
	77	Loulia Baxley, UNCW	1999-00
9.	75	Trish Halpin, Mason	1998-99
10.	74	Kristina Cesnaviciute, VCU	2003-04
	74	Nyree Roberts, ODU	1996-97

THREE-POINT FIELD GOAL PCT. *SEASON*

PLAYER (MIN. 40 3FGM)

1.	48.3% (73-151)	Meghan Creighton, Drexel	2016-17
2.	48.2% (54-112)	Paula Schuler, JMU	1990-91
3.	47.8% (75-157)	Kamile Nacickaite, Drexel	2010-11
4.	46.5% (60-129)	Julie Jones, UR	1988-89
5.	45.5% (61-134)	Ginny Doyle, UR	1991-92
6.	45.2% (52-115)	Elena Delle Donne, UD	2012-13
7.	45.1% (51-113)	Sarah Curran, Drexel	2015-16
8.	44.7% (42-94)	Sam Brigham, Hofstra	2009-10
9.	44.5% (49-110)	Jill Bartley, Mason	1999-2000
10.	43.3% (45-104)	Hollie Mershon, Drexel	2010-11
11.	42.4% (50-118)	Hannah Jardine, UD	2014-15

SCORING AVERAGE *SEASON*

PLAYER

1.	28.1	Elena Delle Donne, Delaware	2011-12
2.	26.7	Elena Delle Donne, Delaware	2009-10
3.	26.0	Elena Delle Donne, Delaware	2012-13
4.	25.3	Elena Delle Donne, Delaware	2010-11
5.	24.6	Dawn Evans, JMU	2009-10
6.	23.8	Dawn Evans, JMU	2008-09
7.	23.6	Precious Hall, James Madison	2016-17
8.	23.5	Gabriela Marginean, Drexel	2009-10
9.	23.3	Gabriela Marginean, Drexel	2008-09
10.	23.2	Courtney Hurt, VCU	2010-11
11.	23.1	Dawn Evans, JMU	2010-11

REBOUNDING AVERAGE *SEASON*

PLAYER

1.	13.1	Courtney Hurt, VCU	2011-12
2.	12.4	Courtney Hurt, VCU	2010-11
3.	12.0	Nyree Roberts, ODU	1997-98
4.	11.9	Kyra Kaylor, W&M	2005-06
5.	11.6	Meredith Alexis, JMU	2006-07
6.	11.5	Tiffany Benson, W&M	2008-09
	11.5	Shante Evans, Hofstra	2012-13
8.	11.3	Tiffany Stone, W&M	1988-89
	11.3	Laurie Governor, UR	1985-86
10.	11.1	Quanita Hollingsworth, VCU	2005-06

CAA WOMEN'S BASKETBALL CONTACT INFORMATION

	Contact	Office Phone	Email	The CAA on Twitter			
CAA	Kelly McCarthy	804-525-1430	kmccarthy@caasports.com	@CAASports	@CAABasketball		#CAAHoops
CofC	Chris Chandler	843-953-5465	chandlercw@cofc.edu	@CofCAthletics	@CofCWBasketball	@CofC_CoachJacks	#CofC
Delaware	Maggie Hayon	302-831-6389	mhayon@udel.edu	@UDBluehens	@DelawareWBB	@UDCoachMartin	#BlueHens
Drexel	Sam Angell	215-895-6895	sea65@drexel.edu	@DrexelDragons	@DrexelWBB	@DeniseDillon	#Drexel
Elon	Andrew Wilson	336-278-6761	awilson26@elon.edu	@ElonPhoenix	@ElonWBBasketball		#PhoenixRising
Hofstra	Amanda Ghysel	516-463-6759	Amanda.Ghysel@hofstra.edu	@HofstraPride	@HofstraWBB	@CoachKSteveskey	#Hofstra
JMU	Devon Howard	540-568-3701	howardbd@jmu.edu	@JMUSports	@JMUWBBasketball	@CoachOJMU	#JMUdukes
UNCW	Eric Rhew	910-962-3252	rhewe@uncw.edu	@UNCWathletics	@UNCWwomenshoops	@HC_AdelHarris	#UNCW
NU	Mike Skovan	617-373-2691	m.skovan@neu.edu	@GoNUAthletics	@GoNUwbbasketball		#GoNU
Towson	Megan O'Brien	410-704-4972	mobrien@towson.edu	@TowsonTigers	@Towson_WBB		#Towson
W&M	Andrew Phillips	757-221-3344	atphillips01@wm.edu	@TribeAthletics	@TribeWBB		#RisingTribe

MEDIA SERVICES

CAA RELEASE

The CAA women's basketball release is updated following each day that games are play. CAA standings, team-by-team results, notes, and any statistics will be updated as often as needed based upon the schedule of play. The release will be available via CAASports.com. For more information, contact Kelly McCarthy at kmccarthy@caasports.com.

CAA WEEKLY AWARDS

The CAA names a Player of the Week and a Rookie of the Week each Monday morning during the season. Winners are chosen from the nominations provided by the conference sports information directors. The information will be available from the CAA office via release, social media, and on the official league website.

CAASPORTS.COM

The official website of the Colonial Athletic Association. Visit CAA Basketball Media Central for all of your team info research and check out CAA Basketball Game Day for all your immediate links to live stats, live audio, webstreaming, and final results and recaps.

CAASTATS.COM

CAASTats.com is the on-the-go source for CAA scores throughout the regular and postseason. Accessible from any internet connected device, CAAStats.com will include live stat information for every "statistic-centric" home competition.

CAA.TV & ROKU

Just in time for the 2016-17 season, CAA.TV, the league's free digital portal, can be accessed on Roku as well as any internet connected device. CAA.tv gives fans access to nearly every live event being contested across the conference. CAA.TV also features rich live stat functionality for nearly every game in the CAA, as well as social media integration which will allow fans to be connected across the conference while watching all the action. Games may be subject to online blackout.

CAA ON THE AIRWAVES

The CAA's television partner, the **American Sports Network (ASN)** will televise five women's contests on affiliate stations throughout the nation during the regular season. ASN is a programming initiative of Sinclair Networks Group, Sinclair Broadcast Group includes 164 television stations and affiliations with all the major networks and reaches approximately 38.2 percent of U.S. television households. Comcast SportsNet will once again televise the semifinals and finals of the CAA Women's Basketball Championship. Comcast Sports Group consists of 11 regional networks that deliver 2,400 sporting events annually to 43 million homes.

CAA SOCIAL

There are a variety of ways fans and media can interact with the CAA.

Twitter.com/CAABasketball

Discover what is happening right now and use **#CAAHoops**

Instagram/CAASports

Tag your photos with **#CAAHoops**

Snapchat/caasports

A behind-the-scenes look at the CAA

Facebook.com/CAASports

Keep up with all CAA releases and videos right on your home page.

YouTube.com/CAASportsProductions

Watch highlights, recaps, promos, and more.

CAA WBB TV SCHEDULE

11/11	Elon at Green Bay <i>ESPN3</i>	8:00 PM
11/13	Northeastern at Canisius <i>ESPN3</i>	7:00 PM
11/14	Hofstra at Stony Brook <i>ESPN3</i>	7:00 PM
11/15	James Madison at Liberty <i>ESPN3</i>	5:00 PM
11/16	Drexel at Vanderbilt <i>SEC Network+/ESPN3</i>	8:00 PM
11/19	Charleston at NC State <i>ACC Network Extra/ESPN3</i>	7:00 PM
11/20	James Madison at Florida State <i>ACC Network Extra/ESPN3</i>	2:00 PM
	UNCW at Georgia State <i>ESPN3</i>	2:00 PM
11/22	William & Mary at USC Upstate <i>ESPN3</i>	7:00 PM
12/4	Hofstra at Buffalo <i>ESPN3</i>	12:00 PM
	Elon at North Carolina <i>ACC Network Extra/ESPN3</i>	5:30 PM
12/6	Towson at Maryland <i>Big Ten Network+</i>	7:00 PM
12/6	Northeastern at Maine <i>ESPN3</i>	7:00 PM
12/8	Elon at Duke <i>ACC Network Extra/ESPN3</i>	7:00 PM
12/11	UNCW at NC State <i>ACC Network Extra/ESPN3</i>	2:00 PM
12/16	Charleston at Louisville <i>ESPN3</i>	7:00 PM
12/17	Elon at East Tennessee State <i>ESPN3</i>	2:00 PM
12/18	Northeastern at Michigan State <i>Big Ten Network+</i>	12:00 PM
12/21	James Madison at St. John's <i>ESPN3</i>	11:00 AM
12/22	Elon at Georgia State <i>ESPN3</i>	1:00 PM
12/29	UNCW at Tennessee <i>SEC Network+/ESPN3</i>	7:00 PM
1/15	Drexel at Elon <i>American Sports Network (ASN)</i>	3:00 PM
2/12	Elon at James Madison <i>American Sports Network (ASN)</i>	3:00 PM
	Hofstra at Delaware <i>American Sports Network (ASN)</i>	5:00 PM
2/19	Delaware at Drexel <i>American Sports Network (ASN)</i>	3:00 PM
2/26	William & Mary at James Madison <i>American Sports Network (ASN)</i>	5:00 PM
3/10	CAA Women's Championship Semifinal <i>Comcast SportsNet</i>	4:30 PM
	CAA Women's Championship Semifinal <i>Comcast SportsNet</i>	7:00 PM
3/11	CAA Women's Championship Game <i>Comcast SportsNet</i>	7:00 PM

CAA VS. NON-CONFERENCE

<i>CAA vs. All Non-Conference</i>	66-46
CAA vs. ACC	2-8
CAA vs. American	1-2
CAA vs. America East	3-3
CAA vs. A-10	11-1
CAA vs. Atlantic Sun	0-1
CAA vs. Big 12	0-0
CAA vs. Big East	0-5
CAA vs. Big Sky	2-1
CAA vs. Big South	3-0
CAA vs. Big Ten	3-5
CAA vs. Big West	1-0
CAA vs. C-USA	1-2
CAA vs. Horizon League	0-2
CAA vs. Ivy League	4-0
CAA vs. MAAC	4-2
CAA vs. MAC	2-1
CAA vs. MEAC	8-0
CAA vs. Missouri Valley	0-1
CAA vs. Mountain West	0-0
CAA vs. Northeast	4-0
CAA vs. Ohio Valley	0-0
CAA vs. Pac-12	0-1
CAA vs. Patriot League	7-4
CAA vs. SEC	0-3
CAA vs. Southern	2-1
CAA vs. Southland	0-0
CAA vs. Summit	1-0
CAA vs. Sun Belt	3-1
CAA vs. SWAC	0-0
CAA vs. West Coast	0-1
CAA vs. WAC	0-0
CAA vs. Independent	0-0
CAA vs. Non-Division I	2-0

2016-17 PREDICTED ORDER OF FINISH

1. James Madison	76 (7)
2. Elon	70 (2)
3. Drexel	68 (1)
4. Hofstra	49
T-5. Delaware	47
T-5. William & Mary	47
7. Northeastern	41
8. College of Charleston	19
9. UNCW	17
10. Towson	16

PRESEASON ALL-CAA FIRST TEAM

Breanna Bolden, CofC	Sr.	G/F
Shay Burnett, Elon	Jr.	G
Sarah Curran, Drexel	Sr.	F
Ashunae Durant, Hofstra	Jr.	F
Precious Hall, JMU	R-Sr.	G

PRESEASON ALL-CAA SECOND TEAM

Raven Bankston, Towson	Sr.	G
Erika Brown, Delaware	Jr.	G
Da'Lishia Griffin, JMU	Sr.	F
Alexandra Masaquel, W&M	Sr.	F
Marlena Tremba, W&M	Sr.	G

PRESEASON HONORABLE MENTION

Kayla Cooper-Williams, JMU	So.	C
Jess Genco, Northeastern	So.	G
Jessica Pellechio, Drexel	Sr.	G
Abby Rendle, W&M	Jr.	C
Jenifer Rhodes, Elon	Sr.	F
Jasmine Steele, UNCW	R-Sr.	G

PRESEASON PLAYER OF THE YEAR

Precious Hall, James Madison

COLLEGE OF CHARLESTON

9-17 Overall/6-9 CAA



- Prior to seeding the 2017 CAA Women's Basketball Championship, Charleston have two less wins and two additional losses due to sanctions imposed for using improper basketballs.
- CofC recorded the fourth-highest offensive output in the program's DI history with 95 points in the victory against Winthrop.
- The Cougars were picked to finish eighth in the 2015-16 CAA Preseason Poll.
- Senior guard **Breanna Bolden** was a 2016-17 Preseason All-CAA First Team selection.
- Bolden became the Cougars career steals leader after swiping eight in the season opener against Charlotte. Bolden also became the Cougars career scoring leader against Hofstra on January 27.
- CofC returns three starters from 2015-16.
- The Cougars went 11-20 (5-13 CAA) last season after going 5-25 (3-15 CAA) during Head Coach Candice M. Jackson's first season at the helm.
- CofC fell in the quarterfinals of the 2015 CAA Championship to James Madison, 53-50.

2016-17 SCHEDULE & RESULTS

N 13	CHARLOTTE	L, 49-62
N 16	at Winthrop	W, 95-64
N 19	at NC State	L, 47-91
N 22	VIRGINIA TECH	L, 61-71
N 27	at Appalachian State	W, 65-62
N 30	NORTH FLORIDA	L, 47-70
D 04	at Houston	L, 63-79
D 16	at Louisville	L, 58-86
D 18	at Western Kentucky	L, 76-89
D 20	COASTAL CAROLINA	L, 72-79
D 22	at Charleston Southern	W, 79-76
J 02	at Elon*	L, 57-70
J 06	WILLIAM & MARY*	W, 70-60
J 08	UNCW*	W, 76-37
J 13	ELON*	L, 56-84
J 15	at Towson*	L, 59-61
J 20	at Drexel*	L, 57-70
J 22	at Delaware*	L, 66-71
J 27	HOFSTRA*	W, 77-51
J 29	at UNCW*	L, 61-67
F 03	DREXEL*	W, 79-75
F 05	TOWSON*	W, 59-54
F 10	at Hofstra*	L, 81-85
F 12	at Northeastern*	L, 44-61
F 17	at William & Mary*	W, 71-69 (OT)
F 19	JAMES MADISON*	L, 78-84
F 24	NORTHEASTERN*	6:30 p.m.
F 26	DELAWARE*	2:00 p.m.
M 01	at James Madison*	7:00 p.m.

* CAA Contest

DELAWARE

14-12 Overall/8-7 CAA



- The Blue Hens got off to a 4-0 start for the first time in seven seasons.
- Delaware held St. Bonaventure to 10 points in the first half and to just 40 for the game on November. It was the lowest allowed by Delaware since a 70-38 win over Georgia State on January 31, 2013.
- The Blue Hens were tied for fifth in the 2016-17 CAA Preseason Poll.
- Senior guard Erika Brown was a 2016-17 Preseason All-CAA Second Team selection.
- UD returns four starters from 2015-16.
- The Blue Hens went 16-15 (10-8 CAA) during 2015-16.
- UD advanced to the semifinals of the 2015 CAA Championship but fell to James Madison, 68-47.

2016-17 SCHEDULE & RESULTS

N 13	GEORGE MASON	W, 67-51
N 16	at American	W, 56-55 (OT)
N 19	ST. BONAVENTURE	W, 43-40
N 22	PRINCETON	W, 66-62
N 25	vs. 23/23 Michigan State	L, 64-81
	(CSUN Thanksgiving Tournament)	
N 26	vs. Detroit Mercy	L, 64-66
	(CSUN Thanksgiving Tournament)	
D 01	ROBERT MORRIS	W, 67-65
D 04	GEORGETOWN	L, 46-64
D 07	at Loyola	W, 47-45
D 11	ARMY WEST POINT	L, 47-61
D 21	HARTFORD	L, 66-67
J 02	WILLIAM & MARY*	L, 49-60
J 06	at UNCW*	W, 63-52
J 08	at Elon*	L, 42-69
J 13	JAMES MADISON*	L, 51-66
J 15	at Hofstra*	W, 73-56
J 20	NORTHEASTERN*	W, 65-53
J 22	CHARLESTON*	W, 71-66
J 27	at William & Mary*	W, 68-54
J 29	at Towson*	W, 73-67
F 03	UNCW*	W, 57-40
F 05	DREXEL*	L, 44-54
F 10	at James Madison*	L, 42-77
F 12	HOFSTRA*	W, 56-45
F 17	at Northeastern*	L, 41-50
F 19	at Drexel*	L, 49-53 (OT)
F 24	Elon*	7:00 p.m.
F 26	at Charleston*	2:00 p.m.
M 01	TOWSON*	7:00 p.m.

* CAA Contest

DREXEL

20-6 Overall/11-4 CAA



- At 12-3, the Dragons got off to its best 15-game start in program history.
- The Dragons had a perfect month of December, going 6-0, including four road victories. It was the Dragons' first undefeated month during the regular season since going 5-0 in November to start the 2010-11 season.
- Drexel's 62-61 win over No. 11 Syracuse on November 21 was the Dragons' first over a ranked opponent since January 3, 2010 when Drexel defeated No. 25 James Madison and their first-ever over an ACC opponent.
- Prior to the season, guard **Meghan Creighton** was named to the Nancy Lieberman Award Watch List which recognizes the top point guards in the nation.
- The Dragons were picked to finish third in the 2016-17 CAA Preseason Poll.
- Senior forward **Sarah Curran** was a 2015-16 Preseason All-CAA First Team selection.
- Senior guard **Jessica Pellechio** was a 2015-16 Preseason Honorable Mention.
- Drexel returns three starters from 2015-16.
- The Dragons went 19-14 (13-5 CAA) during 2015-16.
- As a No. 2 seed, Drexel advanced to the finals 2016 CAA Championship, falling to James Madison, 60-46.
- Drexel earned the CAA's automatic bid to the WNIT, falling to Temple, 74-66, in the first round.

2016-17 SCHEDULE & RESULTS

N 11	PENN STATE	W, 83-60.
N 13	DELAWARE STATE	W, 69-44.
N 16	at Vanderbilt	L, 63-73.
N 21	11/16 SYRACUSE	W, 62-61
N 27	at Bucknell	L, 66-78
D 03	at Cornell	W, 63-53
D 13	NIAGARA	W, 69-57.
D 18	SAINT JOSEPH'S	W, 60-49.
D 21	at Lafayette	W, 81-39
D 27	vs. George Mason	W, 82-71.
<i>(FIU Holiday Tournament)</i>		
D 28	vs. UMass	W, 65-47.
<i>(FIU Holiday Tournament)</i>		
J 02	TOWSON*	W, 58-48.
J 06	ELON*	L, 45-48.
J 08	at Northeastern*	W, 63-33
J 13	at UNCW*	W, 71-38.
J 15	at Elon*	L, 65-75
J 20	CHARLESTON*	W, 70-57
J 22	HOFSTRA*	W, 65-43.
J 27	at James Madison*	L, 47-54
J 29	NORTHEASTERN*	W, 74-51
F 03	at Charleston*	L, 75-79
F 05	at Delaware*	W, 54-44
F 10	WILLIAM & MARY*	W, 65-48
F 12	UNCW*	W, 76-51
F 17	at Towson*	W, 80-65
F 19	DELAWARE*	W, 53-49 (OT).
F 24	JAMES MADISON*	7:00 p.m.
F 26	at Hofstra*	2:00 p.m.
M 01	at William & Mary*	2:00 p.m.

* CAA Contest

ELON

21-6 Overall/13-2 CAA



- At 19-2 this season, Elon's winning percentage as a D-I program. It's 11-2 league record is also a program best.
- Elon's 5-0 start to conference play was the best start to a CAA season for Elon to date. Elon's best start to conference play as a Division I team came during the 2001-02 season as a member of the Big South when it opened at 6-0.
- Elon's 48 points against Drexel was the fewest in a win since scoring 44 points in a 44-43 win over Samford on March 2, 2014.
- Elon senior guard **Maddie McCallie**, became just the third player in NCAA women's basketball history to play a game against her mother on December 8. Maddie's mother is Duke head coach Joanne P. McCallie.
- Elon hosted Wake Forest for the first visit by an ACC opponent in its NCAA Division I history.
- The Phoenix was picked to finish second in the 2016-17 CAA Preseason Poll.
- Junior guard **Shay Burnett** was a 2016-17 Preseason All-CAA First Team selection.
- Elon returns four starters from 2015-16.
- The Phoenix went 18-13 (11-7 CAA) during their second season as a CAA member.
- As a No. 4 seed, Elon advanced to the quarterfinals of the 2016 CAA Championship, falling to Delaware, 57-50.
- Elon earned its second-straight bid to the WNIT but fell at Virginia Tech, 68-59, in the opener.

2016-17 SCHEDULE & RESULTS

N 11	at Green Bay	L, 53-74
<i>(Preseason WNIT)</i>		
N 14	RUTGERS	W, 66-54
N 18	Eastern Washington	W, 76-55
<i>(Preseason WNIT)</i>		
N 19	vs. Central Michigan	W, 71-57
<i>(Preseason WNIT)</i>		
N 22	BUCKNELL	W, 64-58
N 26	WAKE FOREST	L, 68-78
D 04	at North Carolina	L, 73-78
D 08	at 21/21 Duke	L, 61-68
D 17	at East Tennessee State	W, 79-51
D 21	vs. Akron	W, 65-62
<i>(Georgia State Holiday Classic)</i>		
D 22	at Georgia State	W, 84-67
<i>(Georgia State Holiday Classic)</i>		
D 28	KING	W, 93-47
J 02	CHARLESTON*	W, 70-57
J 06	at Drexel*	W, 48-45
J 08	DELAWARE*	W, 69-42
J 13	at Charleston*	W, 84-56
J 15	DREXEL*	W, 75-65
J 20	JAMES MADISON*	L, 70-76
J 22	at William & Mary*	W, 60-58
J 27	at Northeastern*	W, 76-65
J 29	at Hofstra*	W, 64-53
F 03	TOWSON*	W, 83-55
F 05	at UNCW*	W, 66-56
F 10	NORTHEASTERN*	W, 70-58
F 12	at James Madison*	L, 54-61
F 16	HOFSTRA*	W, 72-61
F 19	WILLIAM & MARY*	W, 70-47
F 24	at Delaware*	7:00 p.m.
F 26	at Towson*	2:00 p.m.
M 01	UNCW*	7:00 p.m.

* CAA Contest

HOFSTRA

11-15 Overall/4-11 CAA



- The Pride was picked to finish fourth in the 2016-17 CAA Preseason Poll.
- Junior forward **Ashunae Durant** was a 2016-17 Preseason All-CAA First Team selection.
- Hofstra returns two starters from 2015-16.
- The Pride went 25-9 (13-5 CAA) in 2015-16.
- As a No. 3 seed, Hofstra was upset in the quarterfinals of the 2016 CAA Championship, falling to Northeastern, 65-54.
- The Pride earned an at-large bid to the WNIT and advanced all the way to the quarterfinals but fell to FGCU, 61-46.

2016-17 SCHEDULE & RESULTS

N 11	MARIST	W, 62-42
N 14	at Stony Brook	W, 67-64
N 18	at Navy	L, 69-78
N 22	DELAWARE STATE	W, 64-44
N 25	at Sacramento State	L, 85-97
N 27	at UC Davis	W, 64-60
D 04	at Buffalo	L, 50-74
D 07	UMASS	W, 71-55
D 10	AMERICAN	W, 72-67 (OT)
D 22	at Saint Joseph's	W, 75-64
D 30	HARTFORD	L, 67-69 (OT)
J 02	NORTHEASTERN*	L, 51-53 (OT)
J 06	at James Madison*	L, 57-93
J 08	at William & Mary*	PPD
J 13	at Towson*	W, 70-61
J 15	DELAWARE*	L, 56-73
J 20	UNCW*	L, 54-56 (OT)
J 22	at Drexel*	L, 43-65
J 27	at Charleston*	L, 51-77
J 29	ELON*	L, 53-64
F 03	JAMES MADISON*	L, 50-61
F 05	WILLIAM & MARY*	W, 64-61
J 08	at William & Mary*	L, 65-81
F 10	CHARLESTON*	W, 85-81
F 12	at Delaware*	L, 45-56
F 16	at Elon*	L, 61-72
F 19	at UNCW*	W, 66-54
F 24	TOWSON*	7:00 p.m.
F 26	DREXEL*	2:00 p.m.
M 01	at Northeastern*	7:00 p.m.

* CAA Contest

JAMES MADISON
20-6 Overall/13-2 CAA

- The Dukes announced that Preseason All-CAA selection **Da'Lishia Griffin** left the program to pursue other opportunities. Griffin's final game with the Dukes was on December 5.
- James Madison announced the sophomore center **Kayla Cooper-Williams** will miss all of 2016-17 season with a torn ACL which she sustained during an exhibition game.
- The Dukes secured their third-straight CAA Regular Season Championship and captured their third-straight CAA Championship crown in 2015-16.
- James Madison is under the direction of first-year Head Coach **Sean O'Regan**, who replaces Kenny Brooks after his left for Virginia Tech.
- The Dukes were picked to four-peat as CAA Champions in the 2016-17 CAA Preseason Poll.
- After missing all of last season with a knee injury, redshirt-senior guard **Precious Hall** was named the 2016-17 CAA Preseason Player of the Year and a Preseason All-CAA First Teamer.
- Sophomore center and reigning CAA Rookie of the Year **Kayla Cooper-Williams** was a 2015-16 Preseason All-CAA honorable mention.
- JMU returns one starter from the 2015-16 squad that went 27-6 overall and 17-1 in CAA play.

2016-17 SCHEDULE & RESULTS

N 11	TENNESSEE	L, 69-81
N 13	ST. FRANCIS BROOKLYN	W, 83-57
N 15	at Liberty	W, 62-48
N 20	at Florida State	L, 64-84
N 24	vs. Idaho State	W, 83-53
<i>(Cancun Challenge)</i>		
N 25	vs. Iowa	L, 75-90
<i>(Cancun Challenge)</i>		
D 02	HAMPTON	W, 71-50
D 05	at Rutgers	W, 82-76 (2OT)
D 21	at St. John's	L, 63-74
D 28	at Saint Joseph's	W, 85-72
D 31	WAKE FOREST	W, 83-76
J 02	UNCW*	W, 73-51
J 06	HOFSTRA*	W, 93-57
J 08	at Towson*	L, 51-54
J 13	at Delaware*	W, 66-51
J 15	NORTHEASTERN*	W, 74-54
J 20	at Elon*	W, 76-70
J 22	TOWSON*	L, 55-60
J 27	DREXEL*	W, 54-47
J 29	at William & Mary*	W, 79-64
F 03	at Hofstra*	W, 61-50
F 05	at Northeastern*	W, 67-49
F 10	DELAWARE*	W, 77-42
F 12	ELON*	W, 61-54
F 17	at UNCW*	W, 70-59
F 19	at Charleston*	W, 84-78
F 24	at Drexel*	7:00 p.m.
F 26	WILLIAM & MARY*	5:00 p.m.
M 01	CHARLESTON	7:00 p.m.

* CAA Contest

UNCW
9-17 Overall/4-11 CAA

- Prior to seeding the 2017 CAA Women's Basketball Championship, UNCW will have one additional win and one less loss on their conference records after CofC used an improper basketball during their game on January 8.
- Senior **Amber Reeves** was selected for the WBCA So You Want To Be A Coach program.
- The Seahawks were picked to finish ninth in the 2015-16 CAA Preseason Poll.
- Redshirt senior guard **Jasmine Steele** was a 2016-17 Preseason Honorable Mention.
- UNCW returns four starters from 2015-16.
- The Seahawks went 7-23 (3-15 CAA) during 2015-16

2016-17 SCHEDULE & RESULTS

N 11	NORFOLK STATE	W, 64-56
N 16	at East Carolina	L, 65-75
N 20	at Georgia State	W, 72-66
N 26	PROVIDENCE	L, 49-65
<i>(UNCW Hampton Inn Thanksgiving Classic)</i>		
N 27	LA SALLE	L, 48-64
<i>(UNCW Hampton Inn Thanksgiving Classic)</i>		
N 30	at Davidson	W, 67-58
D 11	at NC State	L, 54-87
D 15	FURMAN	W, 56-52
D 17	WOFFORD	L, 67-71
D 19	CATAWBA	W, 91-65
D 29	at Tennessee	L, 54-90
J 02	at James Madison*	L, 51-73
J 06	DELAWARE*	L, 52-63
J 08	at Charleston*	L, 37-76
J 13	DREXEL*	L, 38-71
J 15	WILLIAM & MARY*	L, 43-57
J 20	at Hofstra*	W, 56-54 (OT)
J 22	at Northeastern*	L, 47-55
J 27	TOWSON*	W, 59-56
J 29	CHARLESTON*	W, 67-61
F 03	at Delaware*	L, 60-57
F 05	ELON*	L, 56-66
F 10	at Towson*	W, 48-42
F 12	at Drexel*	L, 51-76
F 17	JAMES MADISON*	L, 59-70
F 19	HOFSTRA*	L, 54-66
F 24	at William & Mary*	7:00 p.m.
F 26	NORTHEASTERN*	2:00 p.m.
M 01	at Elon*	7:00 p.m.

* CAA Contest

NORTHEASTERN
10-17 Overall/6-9 CAA

- The Huskies opened CAA play with a 4-0 mark.
- During her second season at the helm, Head Coach **Kelly Cole** guided Northeastern to an 11-win turnaround overall and an eight-win turnaround in the CAA. The Huskies went 15-16 (9-9 CAA) in 2015-16.
- The Huskies were picked to finish seventh in the 2016-17 CAA Preseason Poll.
- Sophomore guard **Jess Genco** was a 2016-17 Preseason Honorable Mention.
- NU returns three starters from 2015-16.
- As the No. 6 seed, the Huskies advanced to the semifinals of the 2016 CAA Championship, but fell to Drexel, 58-49.

2016-17 SCHEDULE & RESULTS

N 11	BOSTON UNIVERSITY	W, 78-59
N 13	at Canisius	W, 83-59
N 18	SAINT MARY'S	L, 53-77
N 20	at Quinnipiac	L, 59-76
N 24	vs. ^{11/11} Stanford	L, 45-74
<i>(Cancun Challenge)</i>		
N 25	vs. Purdue	L, 54-79
<i>(Cancun Challenge)</i>		
N 26	vs. Wichita State	L, 73-87
<i>(Cancun Challenge)</i>		
D 01	NEW HAMPSHIRE	L, 63-66 (OT)
D 07	at Maine	L, 49-68
D 18	at RV/RV Michigan State	L, 44-78
D 20	at Denver	W, 72-69
D 28	SIENA	W, 61-50
J 02	at Hofstra*	W, 53-51 (OT)
J 06	TOWSON*	W, 72-64
J 08	DREXEL*	L, 33-63
J 13	at William & Mary*	L, 58-60
J 15	at James Madison*	L, 54-74
J 20	at Delaware*	L, 53-65
J 22	UNCW*	W, 55-47
J 27	ELON*	L, 65-76
J 29	at Drexel*	L, 51-74
F 03	WILLIAM & MARY*	L, 54-68
F 05	JAMES MADISON*	L, 49-67
F 10	at Elon*	L, 58-70
F 12	CHARLESTON*	W, 61-44
F 17	DELAWARE*	W, 50-41
F 19	at Towson*	W, 63-51
F 24	at Charleston*	6:30 p.m.
F 26	at UNCW*	2:00 p.m.
M 01	HOFSTRA	7:00 p.m.

* CAA Contest

TOWSON

11-15 Overall/4-11 CAA



- The Tigers swept James Madison this season, making them the first team since the 2012-13 Blue Hens to do so. Towson also picked up its first-ever win in Harrisonburg.
- Towson topped Norfolk State on December 29 to match their win total from a year ago. Last year, the Tigers didn't earn their seventh win of the season until March 9 in the CAA Tournament.
- Towson started the year at 5-0, the program's best start since the 2008-09 team opened the year with five straight victories.
- The Tigers wrapped up non-conference play above .500 and its most league wins since the 2011-12 squad went 9-3. The seven wins were the most under Head Coach **Niki Reid Geckeler**.
- With Lil Wayne performing on November 19 in SECU Arena, Towson hosted Cornell at the Towson Center, the first official basketball competition in the Arena since March 3, 2013.
- Towson held Wagner to 40 points on November 17. It was the lowest point total that the Tigers held an opponent to since 2009.
- Towson dropped in 90 points in the season-opener against UMass Lowell. It was the most points scored by the Tigers since 2003-04.
- The Tigers were picked to finish tenth in the 2016-17 CAA Preseason Poll. Senior guard **Raven Bankston** was a 2016-17 Preseason All-CAA Second Team selection.
- Towson returns four starters from 2015-16 and a team that went 7-24 (3-15 CAA).
- As a No. 10 seed, Towson advanced to the quarterfinals of the 2016 CAA Championship, falling to Drexel, 71-54.

2016-17 SCHEDULE & RESULTS

N 11	UMass Lowell	W, 90-56
N 17	at Wagner	W, 69-40
N 19	CORNELL	W, 68-63
N 22	at UMBC	W, 59-48
N 27	GEORGE MASON	W, 79-75
N 30	GEORGETOWN	L, 59-75
D 03	COPPIN STATE	W, 69-65
D 06	at ⁴⁴ /4 Maryland	L, 63-97
D 08	at Colgate	L, 71-76
D 11	RIDER	L, 75-79
D 29	NORFOLK STATE	W, 61-58
J 02	at Drexel*	L, 48-58
J 06	at Northeastern*	L, 64-72
J 08	JAMES MADISON*	W, 54-51
J 13	HOFSTRA*	L, 61-70
J 15	CHARLESTON*	W, 61-59
J 20	WILLIAM & MARY*	W, 64-60
J 22	at James Madison*	W, 60-55
J 27	at UNCW*	L, 56-59
J 29	DELAWARE*	L, 67-73
F 03	at Elon*	L, 55-83
F 05	at Charleston*	L, 54-59
F 10	UNCW*	L, 42-48
F 12	at William & Mary*	L, 55-68
F 17	DREXEL*	L, 65-80
F 19	NORTHEASTERN*	L, 51-63
F 24	at Hofstra*	7:00 p.m.
F 26	ELON*	2:00 p.m.
M 01	at Delaware*	7:00 p.m.

* CAA Contest

WILLIAM & MARY

16-10 Overall/6-9 CAA



- Prior to seeding the 2017 CAA Women's Basketball Championship, William & Mary will have one additional win and one less loss on their conference records after CofC used an improper basketball during their game on January 6-.
- William & Mary's 11-game winning streak set the program record.
- The Tribe blocked 13 shots against Mount St. Mary's on December 18 and 13 against East Carolina 10 days later.
- William & Mary wrapped up non-league play with a 10-1 record, setting the program record for wins. Last season, the Tribe set the program's best start when they opened the campaign 12-2.
- William & Mary has 13 road games in 2016-17.
- The Tribe was tied for fifth in the 2016-17 CAA Preseason Poll.
- Senior guard **Marlena Tremba** and senior forward **Alexandra Masaquel** were a 2016-17 Preseason All-CAA Second Team selections.
- Junior center **Abby Rendle** was a 2016-17 Preseason All-CAA Honorable Mention.
- W&M returns all five starters from 2015-16.
- The Tribe went 15-15 (6-12) in 2015-16.

2016-17 SCHEDULE & RESULTS

N 13	ST. JOHN'S	L, 57-73.
N 18	RICHMOND	W, 67-39.
N 20	at Old Dominion	W, 69-58.
N 22	at South Carolina Upstate	W, 49-46
N 28	DELAWARE STATE	W, 82-48
D 01	DARTMOUTH	W, 63-50
D 03	at American	W, 48-34
D 15	at Norfolk State	W, 65-52
D 18	MOUNT ST. MARY'S	W, 68-46.
D 20	ST. FRANCIS (PA.)	W, 73-60
D 28	EAST CAROLINA	W, 82-72.
J 02	at Delaware*	W, 60-49
J 06	at Charleston*	L, 60-70.
J 08	HOFSTRA*	PPD
J 13	NORTHEASTERN*	W, 60-58.
J 15	at UNCW*	W, 57-43.
J 20	at Towson*	L, 60-64
J 22	ELON*	L, 58-60.
J 27	DELAWARE*	L, 54-68
J 29	JAMES MADISON*	L, 64-79
F 03	at Northeastern*	W, 68-54
F 05	at Hofstra*	L, 61-64
F 07	HOFSTRA*	W, 81-65
F 10	at Drexel*	L, 48-65
F 12	TOWSON*	W, 68-55
F 17	CHARLESTON*	L, 69-71 (OT)
F 19	at Elon*	L, 47-70.
F 24	UNCW*	7:00 p.m.
F 26	at James Madison*	5:00 p.m.
M 01	DREXEL*	7:00 p.m.

* CAA Contest



2016-17 Colonial Athletic Association
CONFERENCE BASKETBALL STATISTICS
Through games of Feb 19, 2017 (All games)



SCORING OFFENSE	G	W-L	Pts	Avg/G
1. James Madison	26	20-6	1861	71.6
2. Elon	27	21-6	1887	69.9
3. Drexel	26	20-6	1724	66.3
4. COFC	26	9-17	1697	65.3
5. William & Mary	26	16-10	1638	63.0
6. Hofstra	26	11-15	1621	62.3
7. Towson	26	11-15	1620	62.3
8. Northeastern	27	10-17	1563	57.9
9. Delaware	26	14-12	1477	56.8
10. UNCW	26	9-17	1445	55.6

SCORING DEFENSE	G	Pts	Avg/G
1. Drexel	26	1415	54.4
2. Delaware	26	1509	58.0
3. William & Mary	26	1513	58.2
4. Elon	27	1601	59.3
5. James Madison	26	1601	61.6
6. Towson	26	1690	65.0
7. UNCW	26	1691	65.0
8. Northeastern	27	1757	65.1
9. Hofstra	26	1716	66.0
10. COFC	26	1822	70.1

SCORING MARGIN	G	Offense	Defense	Margin
1. Drexel	26	66.3	54.4	+11.9
2. Elon	27	69.9	59.3	+10.6
3. James Madison	26	71.6	61.6	+10.0
4. William & Mary	26	63.0	58.2	+4.8
5. Delaware	26	56.8	58.0	-1.2
6. Towson	26	62.3	65.0	-2.7
7. Hofstra	26	62.3	66.0	-3.7
8. COFC	26	65.3	70.1	-4.8
9. Northeastern	27	57.9	65.1	-7.2
10. UNCW	26	55.6	65.0	-9.5

FREE THROW PCT	G	FTM	FTA	Pct.
1. Drexel	26	281	371	.757
2. Delaware	26	330	438	.753
3. James Madison	26	369	506	.729
4. William & Mary	26	258	369	.699
5. Towson	26	338	502	.673
6. Northeastern	27	278	416	.668
7. Hofstra	26	297	448	.663
8. COFC	26	261	395	.661
9. UNCW	26	248	392	.633
10. Elon	27	353	560	.630

FIELD GOAL PERCENTAGE	G	FGM	FGA	Pct.
1. William & Mary	26	627	1500	.418
2. Elon	27	694	1671	.415
3. Drexel	26	602	1450	.415
4. James Madison	26	660	1615	.409
5. COFC	26	653	1653	.395
6. Towson	26	590	1521	.388
7. Delaware	26	524	1369	.383
8. Hofstra	26	580	1598	.363
9. UNCW	26	529	1468	.360
10. Northeastern	27	555	1567	.354

FIELD GOAL PCT DEFENSE	G	FGM	FGA	Pct.
1. Elon	27	548	1515	.362
2. James Madison	26	558	1540	.362
3. Delaware	26	571	1508	.379
4. William & Mary	26	551	1443	.382
5. Drexel	26	515	1332	.387
6. Towson	26	583	1454	.401
7. COFC	26	655	1622	.404
8. Northeastern	27	650	1595	.408
9. UNCW	26	647	1538	.421
10. Hofstra	26	640	1519	.421

3-POINT FG PCT	G	3FGM	3FGA	Pct.
1. Drexel	26	239	641	.373
2. Delaware	26	99	307	.322
3. Northeastern	27	175	550	.318
4. William & Mary	26	126	399	.316
5. James Madison	26	172	545	.316
6. Elon	27	146	469	.311
7. COFC	26	130	435	.299
8. UNCW	26	139	475	.293
9. Towson	26	102	351	.291
10. Hofstra	26	164	569	.288

3-POINT FG PCT DEFENSE	G	3FGM	3FGA	Pct.
1. James Madison	26	136	487	.279
2. William & Mary	26	116	413	.281
3. Elon	27	139	483	.288
4. Drexel	26	125	417	.300
5. COFC	26	166	542	.306
6. Northeastern	27	172	544	.316
7. Delaware	26	154	479	.322
8. Hofstra	26	142	436	.326
9. UNCW	26	166	460	.361
10. Towson	26	182	501	.363

REBOUNDING OFFENSE	G	Rebounds	Avg/G
1. James Madison	26	1102	42.4
2. Elon	27	1139	42.2
3. Hofstra	26	1039	40.0
4. COFC	26	1021	39.3
5. Northeastern	27	1027	38.0
6. Towson	26	959	36.9
7. UNCW	26	958	36.8
8. Delaware	26	931	35.8
9. William & Mary	26	915	35.2
10. Drexel	26	837	32.2

REBOUNDING DEFENSE	G	Rebounds	Avg/G
1. Drexel	26	921	35.4
2. Elon	27	959	35.5
3. Delaware	26	936	36.0
4. James Madison	26	957	36.8
5. William & Mary	26	972	37.4
6. Towson	26	991	38.1
7. Hofstra	26	1002	38.5
8. UNCW	26	1005	38.7
9. Northeastern	27	1055	39.1
10. COFC	26	1079	41.5



2016-17 Colonial Athletic Association
CONFERENCE BASKETBALL STATISTICS
Through games of Feb 19, 2017 (All games)



REBOUNDING MARGIN	G	Team	Avg.	Opp.	Avg. Margin
1. Elon	27	1139	42.2	959	35.5 +6.7
2. James Madison	26	1102	42.4	957	36.8 +5.6
3. Hofstra	26	1039	40.0	1002	38.5 +1.4
4. Delaware	26	931	35.8	936	36.0 -0.2
5. Northeastern	27	1027	38.0	1055	39.1 -1.0
6. Towson	26	959	36.9	991	38.1 -1.2
7. UNCW	26	958	36.8	1005	38.7 -1.8
8. William & Mary	26	915	35.2	972	37.4 -2.2
9. COFC	26	1021	39.3	1079	41.5 -2.2
10. Drexel	26	837	32.2	921	35.4 -3.2

ASSISTS	G	No.	Avg/G
1. William & Mary	26	422	16.2
2. Drexel	26	392	15.1
3. Hofstra	26	377	14.5
4. COFC	26	369	14.2
5. Elon	27	356	13.2
6. James Madison	26	324	12.5
7. Northeastern	27	322	11.9
8. Delaware	26	291	11.2
9. UNCW	26	285	11.0
Towson	26	285	11.0

TURNOVER MARGIN	G	Team	Avg.	Opp.	Avg. Margin
1. Drexel	26	321	12.3	469	18.0 +5.7
2. William & Mary	26	380	14.6	460	17.7 +3.1
3. Towson	26	442	17.0	490	18.8 +1.8
4. Elon	27	405	15.0	439	16.3 +1.3
5. James Madison	26	406	15.6	436	16.8 +1.2
6. COFC	26	448	17.2	460	17.7 +0.5
7. Hofstra	26	403	15.5	414	15.9 +0.4
8. Delaware	26	384	14.8	356	13.7 -1.1
9. UNCW	26	386	14.8	343	13.2 -1.7
10. Northeastern	27	429	15.9	369	13.7 -2.2

OFFENSIVE REBOUNDS	G	No.	Avg/G
1. Elon	27	434	16.1
2. James Madison	26	394	15.2
3. Hofstra	26	387	14.9
4. COFC	26	360	13.8
5. Towson	26	347	13.3
6. Northeastern	27	358	13.3
7. William & Mary	26	304	11.7
8. UNCW	26	296	11.4
9. Drexel	26	284	10.9
10. Delaware	26	273	10.5

DEFENSIVE REB PCT.	G	D-Reb	Opp. OR	D-Reb%
1. UNCW	26	662	299	.689
2. Elon	27	705	321	.687
3. Hofstra	26	652	305	.681
4. James Madison	26	708	345	.672
5. Delaware	26	658	321	.672
6. Northeastern	27	669	333	.668
7. Towson	26	612	335	.646
8. William & Mary	26	611	348	.637
9. Drexel	26	553	321	.633
10. COFC	26	661	385	.632

BLOCKED SHOTS	G	No.	Avg/G
1. William & Mary	26	171	6.6
2. Elon	27	121	4.5
3. Delaware	26	102	3.9
4. James Madison	26	95	3.7
5. Hofstra	26	88	3.4
6. Towson	26	76	2.9
7. COFC	26	67	2.6
8. UNCW	26	57	2.2
9. Northeastern	27	51	1.9
10. Drexel	26	43	1.7

STEALS	G	No.	Avg/G
1. William & Mary	26	274	10.5
2. Towson	26	265	10.2
3. COFC	26	247	9.5
4. Drexel	26	239	9.2
5. James Madison	26	212	8.2
6. Elon	27	217	8.0
7. Hofstra	26	190	7.3
8. Delaware	26	171	6.6
9. Northeastern	27	163	6.0
10. UNCW	26	137	5.3

ASSIST/TURNOVER RATIO	G	Ast.	Avg.	T/O	Avg.	Ratio
1. Drexel	26	392	15.1	321	12.3	1.2
2. William & Mary	26	422	16.2	380	14.6	1.1
3. Hofstra	26	377	14.5	403	15.5	0.9
4. Elon	27	356	13.2	405	15.0	0.9
5. COFC	26	369	14.2	448	17.2	0.8
6. James Madison	26	324	12.5	406	15.6	0.8
7. Delaware	26	291	11.2	384	14.8	0.8
8. Northeastern	27	322	11.9	429	15.9	0.8
9. UNCW	26	285	11.0	386	14.8	0.7
10. Towson	26	285	11.0	442	17.0	0.6

DEFENSIVE REBOUNDS	G	No.	Avg/G
1. James Madison	26	708	27.2
2. Elon	27	705	26.1
3. UNCW	26	662	25.5
4. COFC	26	661	25.4
5. Delaware	26	658	25.3
6. Hofstra	26	652	25.1
7. Northeastern	27	669	24.8
8. Towson	26	612	23.5
9. William & Mary	26	611	23.5
10. Drexel	26	553	21.3

OFFENSIVE REB PCT.	G	O-Reb	Opp. DR	O-Reb%
1. Elon	27	434	638	.405
2. James Madison	26	394	612	.392
3. Hofstra	26	387	697	.357
4. Towson	26	347	656	.346
5. COFC	26	360	694	.342
6. Northeastern	27	358	722	.331
7. William & Mary	26	304	624	.328
8. Drexel	26	284	600	.321
9. Delaware	26	273	615	.307
10. UNCW	26	296	706	.295



2016-17 Colonial Athletic Association
CONFERENCE BASKETBALL STATISTICS
Through games of Feb 19, 2017 (All games)



3-POINT FG MADE	G	No.	Avg/G
1. Drexel	26	239	9.2
2. James Madison	26	172	6.6
3. Northeastern	27	175	6.5
4. Hofstra	26	164	6.3
5. Elon	27	146	5.4
6. UNCW	26	139	5.3
7. COFC	26	130	5.0
8. William & Mary	26	126	4.8
9. Towson	26	102	3.9
10. Delaware	26	99	3.8



2016-17 Colonial Athletic Association
CONFERENCE BASKETBALL STATISTICS
Through games of Feb 19, 2017 (All games)



Team	Conference	Pct.	PF	PA	Overall	Pct.	PF	PA	Current unbeaten streak
James Madison	13-2	.867	69.4	56.0	20-6	.769	71.6	61.6	James Madison -- 8
Elon	12-2	.857	68.6	57.7	21-6	.778	69.9	59.3	Drexel -- 5
Drexel	11-4	.733	64.1	52.2	20-6	.769	66.3	54.4	Northeastern -- 3
Delaware	8-7	.533	56.3	57.5	14-12	.538	56.8	58.0	Elon -- 2
William & Mary	6-8	.429	62.0	61.8	16-10	.615	63.0	58.2	Hofstra -- 1
Northeastern	6-9	.400	55.3	61.0	10-17	.370	57.9	65.1	
COFC	6-9	.400	65.7	66.9	9-17	.346	65.3	70.1	
Hofstra	4-11	.267	58.3	66.8	11-15	.423	62.3	66.0	
Towson	4-11	.267	57.1	63.9	11-15	.423	62.3	65.0	
UNCW	4-11	.267	50.5	62.9	9-17	.346	55.6	65.0	

TEAM SUMMARIES	G	PF-PA	Avg score	Margin	FG-FGA	Pct.	3FG-FGA	Pct.	FT-FTA	Pct.	RebF	RebA	Margin
COFC	26	1697-1822	65.3-70.1	-4.8	653-1653	.395	130-435	.299	261-395	.661	1021	1079	-2.2
Delaware	26	1477-1509	56.8-58.0	-1.2	524-1369	.383	99-307	.322	330-438	.753	931	936	-0.2
Drexel	26	1724-1415	66.3-54.4	+11.9	602-1450	.415	239-641	.373	281-371	.757	837	921	-3.2
Elon	27	1887-1601	69.9-59.3	+10.6	694-1671	.415	146-469	.311	353-560	.630	1139	959	+6.7
Hofstra	26	1621-1716	62.3-66.0	-3.7	580-1598	.363	164-569	.288	297-448	.663	1039	1002	+1.4
James Madison	26	1861-1601	71.6-61.6	+10.0	660-1615	.409	172-545	.316	369-506	.729	1102	957	+5.6
Northeastern	27	1563-1757	57.9-65.1	-7.2	555-1567	.354	175-550	.318	278-416	.668	1027	1055	-1.0
Towson	26	1620-1690	62.3-65.0	-2.7	590-1521	.388	102-351	.291	338-502	.673	959	991	-1.2
UNCW	26	1445-1691	55.6-65.0	-9.5	529-1468	.360	139-475	.293	248-392	.633	958	1005	-1.8
William & Mary	26	1638-1513	63.0-58.2	+4.8	627-1500	.418	126-399	.316	258-369	.699	915	972	-2.2

ATTENDANCE	Home	Average	Away	Average	Neutral	Average	Total	Average
COFC	11-5564	506	15-15959	1064	0-0	0	26-21523	828
Delaware	14-20137	1438	10-8381	838	2-429	214	26-28947	1113
Drexel	13-9073	698	11-11045	1004	2-339	170	26-20457	787
Elon	12-8252	688	13-15816	1217	2-465	232	27-24533	909
Hofstra	12-5072	423	14-10825	773	0-0	0	26-15897	611
James Madison	11-33120	3011	13-18052	1389	2-3220	1610	26-54392	2092
Northeastern	12-4097	341	12-12751	1063	3-4830	1610	27-21678	803
Towson	15-5555	370	11-9994	909	0-0	0	26-15549	598
UNCW	14-13731	981	12-23831	1986	0-0	0	26-37562	1445
William & Mary	14-6147	439	12-6943	579	0-0	0	26-13090	503
Totals	128-110748	865	123-133597	1086	11-9283	844	262-253628	968



2016-17 Colonial Athletic Association
INDIVIDUAL BASKETBALL STATISTICS
Through games of Feb 19, 2017 (All games)



To be ranked, a player must appear in at least 75.0% of their team's games.

SCORING								REBOUNDING							
	Cl	G	FG	3FG	FT	Pts	Avg/G		Cl	G	Off	Def	Total	Avg/G	
1. Hall, Precious-JMU	Sr	26	202	84	126	614	23.6	1. Durant, Ashunae-Hofstra	Jr	26	128	156	284	10.9	
2. Bolden, Breanna-COFC	Sr	26	178	27	81	464	17.8	2. Enabosi, Nicole-Delaware	So	25	80	165	245	9.8	
3. Bankston, Raven-Towson	Sr	26	158	28	90	434	16.7	3. Bolden, Breanna-COFC	Sr	26	55	164	219	8.4	
4. Durant, Ashunae-Hofstra	Jr	26	147	1	127	422	16.2	4. Sally, Francesca-NU	Sr	27	60	163	223	8.3	
5. Curran, Sarah-Drexel	Sr	26	156	43	43	398	15.3	5. Masaquel, Alexandra-WM	Sr	26	71	131	202	7.8	
6. Martin, Sianni-Towson	So	24	117	41	59	334	13.9	6. Banks, Rebekah-UNCW	Jr	26	78	123	201	7.7	
7. Enabosi, Nicole-Delaware	So	25	105	1	131	342	13.7	7. Henry, Jordan-UNCW	Sr	25	51	138	189	7.6	
8. Tremba, Marlena-WM	Sr	26	105	66	61	337	13.0	8. Brown, Tanisha-COFC	Jr	26	84	109	193	7.4	
9. Brown, Tanisha-COFC	Jr	26	130	0	61	321	12.3	9. Burnett,Shay-ELON	Jr	27	87	113	200	7.4	
10. Burnett,Shay-ELON	Jr	27	110	32	81	333	12.3	10. Johnson,Malaya-ELON	Jr	27	56	121	177	6.6	
11. Sally, Francesca-NU	Sr	27	129	20	51	329	12.2	11. Smalls, Kamiah-JMU	Fr	24	55	86	141	5.9	
12. Pellechio, Jessica-Drexel	Sr	26	108	75	19	310	11.9	12. Cuevas, Mary-Towson	Jr	26	48	103	151	5.8	
13. Ortiz, Claudia-NU	Jr	27	103	34	81	321	11.9	13. Rhodes,Jenifer-ELON	Sr	26	56	91	147	5.7	
14. Brown, Erika-Delaware	Sr	26	113	25	53	304	11.7	14. Chatman, Sade-Delaware	Jr	24	40	95	135	5.6	
15. Masaquel, Alexandra-WM	Sr	26	137	1	25	300	11.5	15. Epps, Sydni-Hofstra	Sr	26	45	101	146	5.6	
16. Brown,Lauren-ELON	Sr	27	100	49	62	311	11.5	16. Hall, Precious-JMU	Sr	26	28	110	138	5.3	
17. Luciano, Krystal-Hofstra	Sr	26	101	47	46	295	11.3	17. Dongmo, Sandra-Hofstra	Sr	26	59	78	137	5.3	
18. Raque, Madison-UNCW	Jr	26	100	51	37	288	11.1	18. Butler, Tasia-JMU	Jr	26	54	82	136	5.2	
19. Creighton, Meghan-Drexel	Sr	26	85	73	39	282	10.8	19. Rendle, Abby-WM	Jr	26	37	94	131	5.0	
20. Rhodes,Jenifer-ELON	Sr	26	119	0	30	268	10.3	Nicholas, Makeda-Delaware	Jr	26	40	91	131	5.0	
21. Smalls, Kamiah-JMU	Fr	24	94	9	42	239	10.0								
22. Genco, Jess-NU	So	27	94	52	28	268	9.9								
23. Rendle, Abby-WM	Jr	26	109	0	33	251	9.7								
24. Chatman, Sade-Delaware	Jr	24	90	0	51	231	9.6								
25. Steele, Jasmine-UNCW	Sr	25	89	17	36	231	9.2								
26. Leon, Aleana-Hofstra	So	26	92	21	30	235	9.0								
27. Porter, Amber-JMU	Jr	24	78	6	47	209	8.7								
28. Johnson,Malaya-ELON	Jr	27	98	2	35	233	8.6								
29. Boggs, Bianca-WM	So	26	73	21	54	221	8.5								
30. Greenberg, Bailey-Drexel	Fr	26	84	12	31	211	8.1								

FIELD GOAL PCT						ASSISTS			
	Cl	G	FGM	FGA	Pct.		Cl	G	No. Avg/G
1. Johnson,Malaya-ELON	Jr	27	98	180	.544	1. Luciano, Krystal-Hofstra	Sr	26	162 6.2
2. Smalls, Kamiah-JMU	Fr	24	94	182	.516	2. Burnett,Shay-ELON	Jr	27	123 4.6
3. Rendle, Abby-WM	Jr	26	109	220	.495	3. Green, Jenna-WM	Jr	26	117 4.5
4. Porter, Amber-JMU	Jr	24	78	159	.491	4. Steele, Jasmine-UNCW	Sr	25	105 4.2
5. Rhodes,Jenifer-ELON	Sr	26	119	246	.484	5. Genco, Jess-NU	So	27	105 3.9
6. Masaquel, Alexandra-WM	Sr	26	137	286	.479	6. Baucom,Essence-ELON	Sr	27	102 3.8
7. Greenberg, Bailey-Drexel	Fr	26	84	178	.472	7. Creighton, Meghan-Drexel	Sr	26	97 3.7
8. Curran, Sarah-Drexel	Sr	26	156	341	.457	8. Bolden, Breanna-COFC	Sr	26	81 3.1
9. Brown, Tanisha-COFC	Jr	26	130	289	.450	9. Tremba, Marlena-WM	Sr	26	79 3.0
10. Enabosi, Nicole-Delaware	So	25	105	234	.449	10. Bankston, Raine-Towson	Jr	26	78 3.0
11. Chatman, Sade-Delaware	Jr	24	90	204	.441	Lidge, Kelsi-Drexel	Jr	21	63 3.0
12. Burnett,Shay-ELON	Jr	27	110	250	.440	12. Bankston, Raven-Towson	Sr	26	71 2.7
13. Creighton, Meghan-Drexel	Sr	26	85	194	.438	13. Reynolds, Logan-JMU	So	26	70 2.7
14. Bolden, Breanna-COFC	Sr	26	178	410	.434	14. Brown, Shiclasia-COFC	Jr	26	66 2.5
15. Durant, Ashunae-Hofstra	Jr	26	147	347	.424	15. Curran, Sarah-Drexel	Sr	26	64 2.5



2016-17 Colonial Athletic Association
INDIVIDUAL BASKETBALL STATISTICS
Through games of Feb 19, 2017 (All games)



FREE THROW PCT		CI	G	FTM	FTA	Pct.
1.	Ortiz, Claudia-NU	Jr	27	81	100	.810
	Bolden, Breanna-COFC	Sr	26	81	100	.810
3.	Bankston, Raven-Towson	Sr	26	90	112	.804
4.	Martin, Sianni-Towson	So	24	59	74	.797
5.	Hall, Precious-JMU	Sr	26	126	159	.792
6.	Chatman, Sade-Delaware	Jr	24	51	65	.785
7.	Boggs, Bianca-WM	So	26	54	69	.783
8.	Tremba, Marlena-WM	Sr	26	61	79	.772
9.	Brown, Erika-Delaware	Sr	26	53	69	.768
10.	Enabosi, Nicole-Delaware	So	25	131	181	.724
11.	Brown, Lauren-ELON	Sr	27	62	86	.721
12.	Durant, Ashunae-Hofstra	Jr	26	127	181	.702
13.	Burnett, Shay-ELON	Jr	27	81	121	.669
14.	Brown, Tanisha-COFC	Jr	26	61	98	.622

STEALS		CI	G	No.	Avg/G
1.	Bolden, Breanna-COFC	Sr	26	94	3.6
2.	Bankston, Raven-Towson	Sr	26	81	3.1
3.	Lidge, Kelsi-Drexel	Jr	21	53	2.5
4.	Bankston, Raine-Towson	Jr	26	51	2.0
5.	Boggs, Bianca-WM	So	26	49	1.9
	Masaquel, Alexandra-WM	Sr	26	49	1.9
7.	Genco, Jess-NU	So	27	47	1.7
8.	Enabosi, Nicole-Delaware	So	25	43	1.7
9.	Tremba, Marlena-WM	Sr	26	44	1.7
10.	Luciano, Krystal-Hofstra	Sr	26	43	1.7
11.	Burnett, Shay-ELON	Jr	27	42	1.6
12.	Durant, Ashunae-Hofstra	Jr	26	40	1.5
13.	Reynolds, Logan-JMU	So	26	38	1.5
14.	Brown, Aubree-Drexel	Fr	26	37	1.4
15.	Hall, Precious-JMU	Sr	26	36	1.4

3-POINT FG PCT		CI	G	3FG	FGA	Pct.
1.	Creighton, Meghan-Drexel	Sr	26	73	151	.483
2.	Curran, Sarah-Drexel	Sr	26	43	111	.387
3.	Jardine, Hannah-Delaware	Sr	26	28	75	.373
4.	Burnett, Shay-ELON	Jr	27	32	86	.372
5.	Taggart, Maureen-NU	Jr	25	36	98	.367
6.	Pellechio, Jessica-Drexel	Sr	26	75	207	.362
7.	Ortiz, Claudia-NU	Jr	27	34	96	.354
8.	Brown, Lauren-ELON	Sr	27	49	139	.353
9.	Huff, Darien-COFC	So	26	38	108	.352
10.	Tremba, Marlena-WM	Sr	26	66	190	.347
11.	Hernandez Gil, Ana-Hofstra	Fr	22	41	121	.339
12.	Hall, Precious-JMU	Sr	26	84	251	.335
13.	Raque, Madison-UNCW	Jr	26	51	153	.333
14.	Gonzales, Abby-Delaware	Fr	26	28	88	.318
15.	Genco, Jess-NU	So	27	52	171	.304

3-POINT FG MADE		CI	G	3FG	Avg/G
1.	Hall, Precious-JMU	Sr	26	84	3.2
2.	Pellechio, Jessica-Drexel	Sr	26	75	2.9
3.	Creighton, Meghan-Drexel	Sr	26	73	2.8
4.	Tremba, Marlena-WM	Sr	26	66	2.5
5.	Raque, Madison-UNCW	Jr	26	51	2.0
6.	Genco, Jess-NU	So	27	52	1.9
7.	Hernandez Gil, Ana-Hofstra	Fr	22	41	1.9
8.	Brown, Lauren-ELON	Sr	27	49	1.8
9.	Luciano, Krystal-Hofstra	Sr	26	47	1.8
10.	Tate, Timber-UNCW	Fr	21	37	1.8
11.	Martin, Sianni-Towson	So	24	41	1.7
12.	Curran, Sarah-Drexel	Sr	26	43	1.7
13.	Huff, Darien-COFC	So	26	38	1.5
14.	Taggart, Maureen-NU	Jr	25	36	1.4
15.	Askin, Olivia-Hofstra	Jr	26	35	1.3

BLOCKED SHOTS		CI	G	No.	Avg/G
1.	Rendle, Abby-WM	Jr	26	91	3.5
2.	Nicholas, Makeda-Delaware	Jr	26	45	1.7
3.	Porter, Amber-JMU	Jr	24	40	1.7
4.	Johnson, Malaya-ELON	Jr	27	44	1.6
5.	Durant, Ashunae-Hofstra	Jr	26	36	1.4
6.	Dongmo, Sandra-Hofstra	Sr	26	27	1.0
7.	Cuevas, Mary-Towson	Jr	26	24	0.9
8.	Enabosi, Nicole-Delaware	So	25	23	0.9
9.	White, Ra'Shika-ELON	Fr	22	19	0.9
10.	Rhodes, Jenifer-ELON	Sr	26	21	0.8
11.	Henry, Jordan-UNCW	Sr	25	20	0.8
12.	Thomas, Daijha-Towson	Jr	25	18	0.7
13.	Masaquel, Alexandra-WM	Sr	26	18	0.7
14.	Chatman, Sade-Delaware	Jr	24	16	0.7
15.	Banks, Rebekah-UNCW	Jr	26	16	0.6

ASSIST/TURNOVER RATIO		CI	G	Ast.	T/O	Ratio
1.	Creighton, Meghan-Drexel	Sr	26	97	40	2.4
2.	Green, Jenna-WM	Jr	26	117	58	2.0
3.	Luciano, Krystal-Hofstra	Sr	26	162	92	1.8
4.	Baucom, Essence-ELON	Sr	27	102	60	1.7
5.	Steele, Jasmine-UNCW	Sr	25	105	63	1.7
6.	Lidge, Kelsi-Drexel	Jr	21	63	39	1.6
7.	Burnett, Shay-ELON	Jr	27	123	82	1.5
8.	Tremba, Marlena-WM	Sr	26	79	56	1.4
9.	Genco, Jess-NU	So	27	105	76	1.4
10.	Bankston, Raine-Towson	Jr	26	78	73	1.1
11.	Bolden, Breanna-COFC	Sr	26	81	87	0.9



2016-17 Colonial Athletic Association
INDIVIDUAL BASKETBALL STATISTICS
Through games of Feb 19, 2017 (All games)



OFFENSIVE REBOUNDS	Cl	G	No.	Avg/G
1. Durant, Ashunae-Hofstra	Jr	26	128	4.9
2. Brown, Tanisha-COFC	Jr	26	84	3.2
3. Burnett, Shay-ELON	Jr	27	87	3.2
4. Enabosi, Nicole-Delaware	So	25	80	3.2
5. Banks, Rebekah-UNCW	Jr	26	78	3.0
6. Masaquel, Alexandra-WM	Sr	26	71	2.7
7. Smalls, Kamiah-JMU	Fr	24	55	2.3
8. Dongmo, Sandra-Hofstra	Sr	26	59	2.3
9. Sally, Francesca-NU	Sr	27	60	2.2
10. Rhodes, Jenifer-ELON	Sr	26	56	2.2
11. Bolden, Breanna-COFC	Sr	26	55	2.1
12. Butler, Tasia-JMU	Jr	26	54	2.1
13. Johnson, Malaya-ELON	Jr	27	56	2.1
14. Henry, Jordan-UNCW	Sr	25	51	2.0
15. Smith, Jordyn-Towson	Jr	26	52	2.0

DEFENSIVE REBOUNDS	Cl	G	No.	Avg/G
1. Enabosi, Nicole-Delaware	So	25	165	6.6
2. Bolden, Breanna-COFC	Sr	26	164	6.3
3. Sally, Francesca-NU	Sr	27	163	6.0
4. Durant, Ashunae-Hofstra	Jr	26	156	6.0
5. Henry, Jordan-UNCW	Sr	25	138	5.5
6. Masaquel, Alexandra-WM	Sr	26	131	5.0
7. Banks, Rebekah-UNCW	Jr	26	123	4.7
8. Johnson, Malaya-ELON	Jr	27	121	4.5
9. Hall, Precious-JMU	Sr	26	110	4.2
10. Brown, Tanisha-COFC	Jr	26	109	4.2
11. Burnett, Shay-ELON	Jr	27	113	4.2
12. Cuevas, Mary-Towson	Jr	26	103	4.0
13. Chatman, Sade-Delaware	Jr	24	95	4.0
14. Epps, Sydney-Hofstra	Sr	26	101	3.9
15. Rendle, Abby-WM	Jr	26	94	3.6

MINUTES PLAYED	Cl	G	No.	Avg/G
1. Genco, Jess-NU	So	27	1040	38.5
2. Durant, Ashunae-Hofstra	Jr	26	936	36.0
3. Luciano, Krystal-Hofstra	Sr	26	935	36.0
4. Bolden, Breanna-COFC	Sr	26	918	35.3
5. Bankston, Raven-Towson	Sr	26	901	34.7
6. Brown, Erika-Delaware	Sr	26	900	34.6
Tremba, Marlena-WM	Sr	26	900	34.6
8. Creighton, Meghan-Drexel	Sr	26	877	33.7
9. Hall, Precious-JMU	Sr	26	876	33.7
10. Curran, Sarah-Drexel	Sr	26	865	33.3



2016-17 Colonial Athletic Association
CONFERENCE BASKETBALL STATISTICS
Through games of Feb 19, 2017 (Conference games only)



SCORING OFFENSE	G	W-L	Pts	Avg/G
1. James Madison	15	13-2	1041	69.4
2. Elon	14	12-2	961	68.6
3. COFC	15	6-9	985	65.7
4. Drexel	15	11-4	961	64.1
5. William & Mary	14	6-8	868	62.0
6. Hofstra	15	4-11	875	58.3
7. Towson	15	4-11	857	57.1
8. Delaware	15	8-7	844	56.3
9. Northeastern	15	6-9	829	55.3
10. UNCW	15	4-11	758	50.5

SCORING DEFENSE	G	Pts	Avg/G
1. Drexel	15	783	52.2
2. James Madison	15	840	56.0
3. Delaware	15	862	57.5
4. Elon	14	808	57.7
5. Northeastern	15	915	61.0
6. William & Mary	14	865	61.8
7. UNCW	15	943	62.9
8. Towson	15	958	63.9
9. Hofstra	15	1002	66.8
10. COFC	15	1003	66.9

SCORING MARGIN	G	Offense	Defense	Margin
1. James Madison	15	69.4	56.0	+13.4
2. Drexel	15	64.1	52.2	+11.9
3. Elon	14	68.6	57.7	+10.9
4. William & Mary	14	62.0	61.8	+0.2
5. COFC	15	65.7	66.9	-1.2
6. Delaware	15	56.3	57.5	-1.2
7. Northeastern	15	55.3	61.0	-5.7
8. Towson	15	57.1	63.9	-6.7
9. Hofstra	15	58.3	66.8	-8.5
10. UNCW	15	50.5	62.9	-12.3

FREE THROW PCT	G	FTM	FTA	Pct.
1. James Madison	15	204	269	.758
2. Drexel	15	153	203	.754
3. Delaware	15	183	245	.747
4. Hofstra	15	177	256	.691
5. Northeastern	15	156	230	.678
6. COFC	15	165	245	.673
7. William & Mary	14	119	177	.672
8. Towson	15	175	275	.636
9. Elon	14	185	293	.631
10. UNCW	15	131	208	.630

FIELD GOAL PERCENTAGE	G	FGM	FGA	Pct.
1. William & Mary	14	344	812	.424
2. Drexel	15	337	809	.417
3. James Madison	15	367	897	.409
4. Elon	14	353	874	.404
5. COFC	15	372	941	.395
6. Delaware	15	303	768	.395
7. Towson	15	315	864	.365
8. Northeastern	15	290	837	.346
9. UNCW	15	278	804	.346
10. Hofstra	15	306	901	.340

FIELD GOAL PCT DEFENSE	G	FGM	FGA	Pct.
1. James Madison	15	297	870	.341
2. Delaware	15	322	899	.358
3. Elon	14	280	775	.361
4. Drexel	15	286	786	.364
5. Northeastern	15	343	892	.385
6. Towson	15	329	847	.388
7. COFC	15	359	910	.395
8. William & Mary	14	318	785	.405
9. UNCW	15	360	872	.413
10. Hofstra	15	371	871	.426

3-POINT FG PCT	G	3FGM	3FGA	Pct.
1. Drexel	15	134	353	.380
2. James Madison	15	103	314	.328
3. Northeastern	15	93	296	.314
4. Delaware	15	55	182	.302
5. COFC	15	76	256	.297
6. Elon	14	70	238	.294
7. William & Mary	14	61	210	.290
8. UNCW	15	71	250	.284
9. Towson	15	52	193	.269
10. Hofstra	15	86	333	.258

3-POINT FG PCT DEFENSE	G	3FGM	3FGA	Pct.
1. James Madison	15	63	262	.240
2. Drexel	15	68	237	.287
3. Northeastern	15	86	286	.301
4. Elon	14	73	242	.302
5. William & Mary	14	64	211	.303
6. Delaware	15	82	268	.306
7. COFC	15	90	293	.307
8. Hofstra	15	75	244	.307
9. Towson	15	99	292	.339
10. UNCW	15	101	290	.348

REBOUNDING OFFENSE	G	Rebounds	Avg/G
1. Elon	14	601	42.9
2. James Madison	15	630	42.0
3. COFC	15	583	38.9
4. Hofstra	15	579	38.6
5. Northeastern	15	578	38.5
6. Towson	15	567	37.8
7. Delaware	15	547	36.5
8. UNCW	15	528	35.2
9. William & Mary	14	483	34.5
10. Drexel	15	501	33.4

REBOUNDING DEFENSE	G	Rebounds	Avg/G
1. Elon	14	490	35.0
2. Drexel	15	537	35.8
3. Delaware	15	543	36.2
4. James Madison	15	545	36.3
5. William & Mary	14	516	36.9
6. UNCW	15	573	38.2
7. Northeastern	15	581	38.7
8. Towson	15	595	39.7
9. Hofstra	15	600	40.0
10. COFC	15	617	41.1



2016-17 Colonial Athletic Association
CONFERENCE BASKETBALL STATISTICS
Through games of Feb 19, 2017 (Conference games only)



REBOUNDING MARGIN	G	Team	Avg.	Opp.	Avg.	Margin
1. Elon	14	601	42.9	490	35.0	+7.9
2. James Madison	15	630	42.0	545	36.3	+5.7
3. Delaware	15	547	36.5	543	36.2	+0.3
4. Northeastern	15	578	38.5	581	38.7	-0.2
5. Hofstra	15	579	38.6	600	40.0	-1.4
6. Towson	15	567	37.8	595	39.7	-1.9
7. COFC	15	583	38.9	617	41.1	-2.3
8. William & Mary	14	483	34.5	516	36.9	-2.4
9. Drexel	15	501	33.4	537	35.8	-2.4
10. UNCW	15	528	35.2	573	38.2	-3.0

BLOCKED SHOTS	G	No.	Avg/G
1. William & Mary	14	89	6.4
2. Delaware	15	66	4.4
3. Elon	14	59	4.2
4. James Madison	15	60	4.0
5. Towson	15	50	3.3
6. Hofstra	15	46	3.1
7. COFC	15	44	2.9
8. UNCW	15	31	2.1
9. Drexel	15	30	2.0
10. Northeastern	15	30	2.0

ASSISTS	G	No.	Avg/G
1. William & Mary	14	244	17.4
2. Drexel	15	219	14.6
3. COFC	15	208	13.9
4. Hofstra	15	203	13.5
5. James Madison	15	201	13.4
6. Elon	14	186	13.3
7. Delaware	15	172	11.5
8. Northeastern	15	164	10.9
9. UNCW	15	148	9.9
10. Towson	15	145	9.7

STEALS	G	No.	Avg/G
1. COFC	15	148	9.9
2. William & Mary	14	138	9.9
3. Towson	15	135	9.0
4. Drexel	15	131	8.7
5. Elon	14	108	7.7
6. James Madison	15	111	7.4
7. Hofstra	15	95	6.3
8. Delaware	15	89	5.9
9. Northeastern	15	77	5.1
10. UNCW	15	70	4.7

TURNOVER MARGIN	G	Team	Avg.	Opp.	Avg.	Margin
1. Drexel	15	194	12.9	253	16.9	+3.9
2. COFC	15	241	16.1	276	18.4	+2.3
3. Elon	14	204	14.6	227	16.2	+1.6
4. William & Mary	14	212	15.1	229	16.4	+1.2
5. James Madison	15	224	14.9	231	15.4	+0.5
6. Towson	15	245	16.3	246	16.4	+0.1
7. Hofstra	15	227	15.1	224	14.9	-0.2
8. UNCW	15	213	14.2	178	11.9	-2.3
9. Delaware	15	236	15.7	185	12.3	-3.4
10. Northeastern	15	240	16.0	187	12.5	-3.5

ASSIST/TURNOVER RATIO	G	Ast.	Avg.	T/O	Avg.	Ratio
1. William & Mary	14	244	17.4	212	15.1	1.2
2. Drexel	15	219	14.6	194	12.9	1.1
3. Elon	14	186	13.3	204	14.6	0.9
4. James Madison	15	201	13.4	224	14.9	0.9
5. Hofstra	15	203	13.5	227	15.1	0.9
6. COFC	15	208	13.9	241	16.1	0.9
7. Delaware	15	172	11.5	236	15.7	0.7
8. UNCW	15	148	9.9	213	14.2	0.7
9. Northeastern	15	164	10.9	240	16.0	0.7
10. Towson	15	145	9.7	245	16.3	0.6

OFFENSIVE REBOUNDS	G	No.	Avg/G
1. Elon	14	247	17.6
2. Hofstra	15	224	14.9
3. James Madison	15	216	14.4
4. Towson	15	210	14.0
5. COFC	15	201	13.4
6. Northeastern	15	199	13.3
7. William & Mary	14	169	12.1
8. Drexel	15	161	10.7
9. UNCW	15	157	10.5
10. Delaware	15	156	10.4

DEFENSIVE REBOUNDS	G	No.	Avg/G
1. James Madison	15	414	27.6
2. Delaware	15	391	26.1
3. COFC	15	382	25.5
4. Elon	14	354	25.3
5. Northeastern	15	379	25.3
6. UNCW	15	371	24.7
7. Towson	15	357	23.8
8. Hofstra	15	355	23.7
9. Drexel	15	340	22.7
10. William & Mary	14	314	22.4

DEFENSIVE REB PCT.	G	D-Reb	Opp. OR	D-Reb%
1. Elon	14	354	162	.686
2. UNCW	15	371	173	.682
3. James Madison	15	414	200	.674
4. Northeastern	15	379	198	.657
5. Hofstra	15	355	188	.654
6. Delaware	15	391	210	.651
7. COFC	15	382	213	.642
8. Towson	15	357	207	.633
9. Drexel	15	340	200	.630
10. William & Mary	14	314	189	.624

OFFENSIVE REB PCT.	G	O-Reb	Opp. DR	O-Reb%
1. Elon	14	247	328	.430
2. James Madison	15	216	345	.385
3. Hofstra	15	224	412	.352
4. Towson	15	210	388	.351
5. Northeastern	15	199	383	.342
6. William & Mary	14	169	327	.341
7. COFC	15	201	404	.332
8. Drexel	15	161	337	.323
9. Delaware	15	156	333	.319
10. UNCW	15	157	400	.282



2016-17 Colonial Athletic Association
CONFERENCE BASKETBALL STATISTICS
Through games of Feb 19, 2017 (Conference games only)



3-POINT FG MADE	G	No.	Avg/G
1. Drexel	15	134	8.9
2. James Madison	15	103	6.9
3. Northeastern	15	93	6.2
4. Hofstra	15	86	5.7
5. COFC	15	76	5.1
6. Elon	14	70	5.0
7. UNCW	15	71	4.7
8. William & Mary	14	61	4.4
9. Delaware	15	55	3.7
10. Towson	15	52	3.5



2016-17 Colonial Athletic Association
CONFERENCE BASKETBALL STATISTICS
Through games of Feb 19, 2017 (Conference games only)



Team	Conference	Pct.	PF	PA	Overall	Pct.	PF	PA	Current unbeaten streak
James Madison	13-2	.867	69.4	56.0	13-2	.867	69.4	56.0	James Madison -- 8
Elon	12-2	.857	68.6	57.7	12-2	.857	68.6	57.7	Drexel -- 5
Drexel	11-4	.733	64.1	52.2	11-4	.733	64.1	52.2	Northeastern -- 3
Delaware	8-7	.533	56.3	57.5	8-7	.533	56.3	57.5	Hofstra -- 1
William & Mary	6-8	.429	62.0	61.8	6-8	.429	62.0	61.8	Elon -- 1
COFC	6-9	.400	65.7	66.9	6-9	.400	65.7	66.9	
Northeastern	6-9	.400	55.3	61.0	6-9	.400	55.3	61.0	
Hofstra	4-11	.267	58.3	66.8	4-11	.267	58.3	66.8	
Towson	4-11	.267	57.1	63.9	4-11	.267	57.1	63.9	
UNCW	4-11	.267	50.5	62.9	4-11	.267	50.5	62.9	

TEAM SUMMARIES	G	PF-PA	Avg score	Margin	FG-FGA	Pct.	3FG-FGA	Pct.	FT-FTA	Pct.	RebF	RebA	Margin
COFC	15	985-1003	65.7-66.9	-1.2	372-941	.395	76-256	.297	165-245	.673	583	617	-2.3
Delaware	15	844-862	56.3-57.5	-1.2	303-768	.395	55-182	.302	183-245	.747	547	543	+0.3
Drexel	15	961-783	64.1-52.2	+11.9	337-809	.417	134-353	.380	153-203	.754	501	537	-2.4
Elon	14	961-808	68.6-57.7	+10.9	353-874	.404	70-238	.294	185-293	.631	601	490	+7.9
Hofstra	15	875-1002	58.3-66.8	-8.5	306-901	.340	86-333	.258	177-256	.691	579	600	-1.4
James Madison	15	1041-840	69.4-56.0	+13.4	367-897	.409	103-314	.328	204-269	.758	630	545	+5.7
Northeastern	15	829-915	55.3-61.0	-5.7	290-837	.346	93-296	.314	156-230	.678	578	581	-0.2
Towson	15	857-958	57.1-63.9	-6.7	315-864	.365	52-193	.269	175-275	.636	567	595	-1.9
UNCW	15	758-943	50.5-62.9	-12.3	278-804	.346	71-250	.284	131-208	.630	528	573	-3.0
William & Mary	14	868-865	62.0-61.8	+0.2	344-812	.424	61-210	.290	119-177	.672	483	516	-2.4

ATTENDANCE	Home	Average	Away	Average	Neutral	Average	Total	Average
COFC	7-3856	551	8-3746	468	0-0	0	15-7602	507
Delaware	7-11630	1661	8-7761	970	0-0	0	15-19391	1293
Drexel	8-5136	642	7-7592	1085	0-0	0	15-12728	849
Elon	7-4883	698	7-6431	919	0-0	0	14-11314	808
Hofstra	7-4109	587	8-8161	1020	0-0	0	15-12270	818
James Madison	7-20279	2897	8-6341	793	0-0	0	15-26620	1775
Northeastern	8-1861	233	7-5633	805	0-0	0	15-7494	500
Towson	8-2338	292	7-7474	1068	0-0	0	15-9812	654
UNCW	8-6673	834	7-6883	983	0-0	0	15-13556	904
William & Mary	7-3559	508	7-4302	615	0-0	0	14-7861	562
Totals	74-64324	869	74-64324	869	0-0	0	148-128648	869



2016-17 Colonial Athletic Association
INDIVIDUAL BASKETBALL STATISTICS
Through games of Feb 19, 2017 (Conference games only)



To be ranked, a player must appear in at least 75.0% of their team's games.

SCORING								REBOUNDING							
	Cl	G	FG	3FG	FT	Pts	Avg/G		Cl	G	Off	Def	Total	Avg/G	
1. Hall, Precious-JMU	Sr	15	105	50	79	339	22.6	1. Enabosi, Nicole-Delaware	So	14	53	101	154	11.0	
2. Bolden, Breanna-COFC	Sr	15	104	19	54	281	18.7	2. Durant, Ashunae-Hofstra	Jr	15	66	97	163	10.9	
3. Durant, Ashunae-Hofstra	Jr	15	81	0	75	237	15.8	3. Bolden, Breanna-COFC	Sr	15	35	110	145	9.7	
4. Bankston, Raven-Towson	Sr	15	84	10	51	229	15.3	4. Masaquel, Alexandra-WM	Sr	14	47	75	122	8.7	
5. Ortiz, Claudia-NU	Jr	15	73	23	52	221	14.7	5. Sally, Francesca-NU	Sr	15	35	94	129	8.6	
6. Enabosi, Nicole-Delaware	So	14	66	0	74	206	14.7	6. Burnett,Shay-ELON	Jr	14	53	64	117	8.4	
7. Curran, Sarah-Drexel	Sr	15	88	24	18	218	14.5	7. Henry, Jordan-UNCW	Sr	14	27	84	111	7.9	
8. Luciano, Krystal-Hofstra	Sr	15	64	30	35	193	12.9	8. Banks, Rebekah-UNCW	Jr	15	50	65	115	7.7	
9. Brown,Lauren-ELON	Sr	14	56	26	38	176	12.6	9. Johnson,Malaya-ELON	Jr	14	35	69	104	7.4	
10. Brown, Erika-Delaware	Sr	15	67	16	37	187	12.5	10. Brown, Tanisha-COFC	Jr	15	51	54	105	7.0	
11. Masaquel, Alexandra-WM	Sr	14	80	0	14	174	12.4	11. Cuevas, Mary-Towson	Jr	15	36	67	103	6.9	
12. Burnett,Shay-ELON	Jr	14	57	17	43	174	12.4	12. Hall, Precious-JMU	Sr	15	16	79	95	6.3	
13. Brown, Tanisha-COFC	Jr	15	74	0	34	182	12.1	13. Smalls, Kamiah-JMU	Fr	13	26	54	80	6.2	
14. Sally, Francesca-NU	Sr	15	71	11	26	179	11.9	14. Rhodes,Jenifer-ELON	Sr	14	37	45	82	5.9	
15. Tremba, Marlana-WM	Sr	14	53	34	25	165	11.8	15. Nicholas, Makeda-Delaware	Jr	15	29	55	84	5.6	
16. Martin, Sianni-Towson	So	13	54	19	23	150	11.5	16. Dongmo, Sandra-Hofstra	Sr	15	37	47	84	5.6	
17. Pellechio, Jessica-Drexel	Sr	15	59	45	9	172	11.5	17. Lee, Maia-Towson	So	14	39	37	76	5.4	
18. Rendle, Abby-WM	Jr	14	67	0	24	158	11.3	18. Boyd, Brianna-COFC	Jr	12	35	30	65	5.4	
19. Rhodes,Jenifer-ELON	Sr	14	71	0	12	154	11.0	19. Porter, Amber-JMU	Jr	15	25	53	78	5.2	
20. Porter, Amber-JMU	Jr	15	62	4	36	164	10.9	20. Ortiz, Claudia-NU	Jr	15	22	52	74	4.9	
21. Steele, Jasmine-UNCW	Sr	14	60	11	22	153	10.9								
22. Johnson,Malaya-ELON	Jr	14	60	1	27	148	10.6								
23. Creighton, Meghan-Drexel	Sr	15	50	43	15	158	10.5								
24. Raque, Madison-UNCW	Jr	15	51	24	24	150	10.0								
25. Chatman, Sade-Delaware	Jr	13	47	0	21	115	8.8								
26. Smalls, Kamiah-JMU	Fr	13	43	6	22	114	8.8								
27. Leon, Aleana-Hofstra	So	15	50	12	19	131	8.7								
28. Genco, Jess-NU	So	15	45	24	16	130	8.7								
29. Nicholas, Makeda-Delaware	Jr	15	54	1	20	129	8.6								
30. Boggs, Bianca-WM	So	14	40	12	20	112	8.0								

FIELD GOAL PCT						ASSISTS			
	Cl	G	FGM	FGA	Pct.		Cl	G	No. Avg/G
1. Rendle, Abby-WM	Jr	14	67	125	.536	1. Luciano, Krystal-Hofstra	Sr	15	92 6.1
2. Johnson,Malaya-ELON	Jr	14	60	113	.531	2. Burnett,Shay-ELON	Jr	14	75 5.4
3. Greenberg, Bailey-Drexel	Fr	15	48	92	.522	3. Green, Jenna-WM	Jr	14	74 5.3
4. Enabosi, Nicole-Delaware	So	14	66	131	.504	4. Steele, Jasmine-UNCW	Sr	14	60 4.3
5. Rhodes,Jenifer-ELON	Sr	14	71	143	.497	5. Genco, Jess-NU	So	15	61 4.1
6. Porter, Amber-JMU	Jr	15	62	126	.492	6. Baucom,Essence-ELON	Sr	14	53 3.8
7. Smalls, Kamiah-JMU	Fr	13	43	88	.489	7. Tremba, Marlana-WM	Sr	14	47 3.4
8. Masaquel, Alexandra-WM	Sr	14	80	165	.485	8. Bolden, Breanna-COFC	Sr	15	50 3.3
9. Chatman, Sade-Delaware	Jr	13	47	99	.475	9. Creighton, Meghan-Drexel	Sr	15	49 3.3
10. Curran, Sarah-Drexel	Sr	15	88	197	.447	10. Barron, Hailee-JMU	Jr	15	46 3.1
11. Nicholas, Makeda-Delaware	Jr	15	54	122	.443	11. Henry, Nola-COFC	Sr	15	42 2.8
12. Bolden, Breanna-COFC	Sr	15	104	239	.435	12. Bankston, Raven-Towson	Sr	15	42 2.8
13. Durant, Ashunae-Hofstra	Jr	15	81	191	.424	13. Reynolds, Logan-JMU	So	15	42 2.8
14. Brown, Tanisha-COFC	Jr	15	74	175	.423	14. Brown, Aubree-Drexel	Fr	15	41 2.7
15. Ortiz, Claudia-NU	Jr	15	73	175	.417	15. Hall, Precious-JMU	Sr	15	39 2.6



2016-17 Colonial Athletic Association
INDIVIDUAL BASKETBALL STATISTICS

Through games of Feb 19, 2017 (Conference games only)



FREE THROW PCT		CI	G	FTM	FTA	Pct.
1.	Bolden, Breanna-COFC	Sr	15	54	61	.885
2.	Hall, Precious-JMU	Sr	15	79	95	.832
3.	Ortiz, Claudia-NU	Jr	15	52	66	.788
4.	Luciano, Krystal-Hofstra	Sr	15	35	45	.778
5.	Brown, Erika-Delaware	Sr	15	37	48	.771
6.	Porter, Amber-JMU	Jr	15	36	49	.735
7.	Bankston, Raven-Towson	Sr	15	51	70	.729
8.	Enabosi, Nicole-Delaware	So	14	74	102	.725
9.	Durant, Ashunae-Hofstra	Jr	15	75	106	.708
10.	Brown, Lauren-ELON	Sr	14	38	58	.655
11.	Burnett, Shay-ELON	Jr	14	43	69	.623
12.	Brown, Tanisha-COFC	Jr	15	34	55	.618

STEALS		CI	G	No.	Avg/G
1.	Bolden, Breanna-COFC	Sr	15	54	3.6
2.	Bankston, Raven-Towson	Sr	15	41	2.7
3.	Boggs, Bianca-WM	So	14	30	2.1
4.	Tremba, Marlena-WM	Sr	14	26	1.9
5.	Genco, Jess-NU	So	15	25	1.7
6.	Luciano, Krystal-Hofstra	Sr	15	24	1.6
	Bankston, Raine-Towson	Jr	15	24	1.6
8.	Masaquel, Alexandra-WM	Sr	14	21	1.5
9.	Brown, Tanisha-COFC	Jr	15	22	1.5
	Brown, Aubree-Drexel	Fr	15	22	1.5
11.	Burnett, Shay-ELON	Jr	14	20	1.4
12.	Reynolds, Victoria-WM	Fr	12	17	1.4
13.	Martin, Sianni-Towson	So	13	17	1.3
14.	Steele, Jasmine-UNCW	Sr	14	18	1.3
	Brown, Lauren-ELON	Sr	14	18	1.3

3-POINT FG PCT		CI	G	3FG	FGA	Pct.
1.	Creighton, Meghan-Drexel	Sr	15	43	95	.453
2.	Barron, Hailee-JMU	Jr	15	21	50	.420
3.	Pellechio, Jessica-Drexel	Sr	15	45	115	.391
	Taggart, Maureen-NU	Jr	15	27	69	.391
5.	Curran, Sarah-Drexel	Sr	15	24	63	.381
6.	Brown, Lauren-ELON	Sr	14	26	72	.361
7.	Ortiz, Claudia-NU	Jr	15	23	64	.359
8.	Hall, Precious-JMU	Sr	15	50	146	.342
9.	Burnett, Shay-ELON	Jr	14	17	51	.333
10.	Bolden, Breanna-COFC	Sr	15	19	59	.322
11.	Brown, Erika-Delaware	Sr	15	16	50	.320
12.	Gonzales, Abby-Delaware	Fr	15	19	61	.311
13.	Tremba, Marlena-WM	Sr	14	34	110	.309
14.	Raque, Madison-UNCW	Jr	15	24	81	.296
15.	Huff, Darien-COFC	So	15	17	58	.293

3-POINT FG MADE		CI	G	3FG	Avg/G
1.	Hall, Precious-JMU	Sr	15	50	3.3
2.	Pellechio, Jessica-Drexel	Sr	15	45	3.0
3.	Creighton, Meghan-Drexel	Sr	15	43	2.9
4.	Tremba, Marlena-WM	Sr	14	34	2.4
5.	Luciano, Krystal-Hofstra	Sr	15	30	2.0
6.	Brown, Lauren-ELON	Sr	14	26	1.9
7.	Taggart, Maureen-NU	Jr	15	27	1.8
8.	Curran, Sarah-Drexel	Sr	15	24	1.6
	Genco, Jess-NU	So	15	24	1.6
	Raque, Madison-UNCW	Jr	15	24	1.6
11.	Ortiz, Claudia-NU	Jr	15	23	1.5
12.	Askin, Olivia-Hofstra	Jr	15	22	1.5
13.	Martin, Sianni-Towson	So	13	19	1.5
14.	Barron, Hailee-JMU	Jr	15	21	1.4
15.	Gonzales, Abby-Delaware	Fr	15	19	1.3
	Bolden, Breanna-COFC	Sr	15	19	1.3

BLOCKED SHOTS		CI	G	No.	Avg/G
1.	Rendle, Abby-WM	Jr	14	42	3.0
2.	Nicholas, Makeda-Delaware	Jr	15	33	2.2
3.	Johnson, Malaya-ELON	Jr	14	29	2.1
4.	Porter, Amber-JMU	Jr	15	28	1.9
5.	Durant, Ashunae-Hofstra	Jr	15	20	1.3
6.	Cuevas, Mary-Towson	Jr	15	17	1.1
7.	Henry, Jordan-UNCW	Sr	14	14	1.0
	Boyd, Brianna-COFC	Jr	12	12	1.0
9.	Dongmo, Sandra-Hofstra	Sr	15	14	0.9
10.	Enabosi, Nicole-Delaware	So	14	13	0.9
11.	Masaquel, Alexandra-WM	Sr	14	12	0.9
	Thomas, Daijha-Towson	Jr	14	12	0.9
13.	Felgemacher, Savannah-JMU	So	12	9	0.8
14.	Boggs, Bianca-WM	So	14	10	0.7
15.	Chatman, Sade-Delaware	Jr	13	9	0.7

ASSIST/TURNOVER RATIO		CI	G	Ast.	T/O	Ratio
1.	Barron, Hailee-JMU	Jr	15	46	14	3.3
2.	Green, Jenna-WM	Jr	14	74	30	2.5
3.	Steele, Jasmine-UNCW	Sr	14	60	28	2.1
4.	Burnett, Shay-ELON	Jr	14	75	40	1.9
5.	Baucom, Essence-ELON	Sr	14	53	29	1.8
6.	Creighton, Meghan-Drexel	Sr	15	49	28	1.8
7.	Luciano, Krystal-Hofstra	Sr	15	92	56	1.6
8.	Tremba, Marlena-WM	Sr	14	47	36	1.3
9.	Genco, Jess-NU	So	15	61	48	1.3
10.	Bolden, Breanna-COFC	Sr	15	50	49	1.0



2016-17 Colonial Athletic Association
INDIVIDUAL BASKETBALL STATISTICS



Through games of Feb 19, 2017 (Conference games only)

OFFENSIVE REBOUNDS					CI	G	No.	Avg/G
1.	Durant, Ashunae-Hofstra	Jr	15	66	4.4			
2.	Burnett, Shay-ELON	Jr	14	53	3.8			
	Enabosi, Nicole-Delaware	So	14	53	3.8			
4.	Brown, Tanisha-COFC	Jr	15	51	3.4			
5.	Masaquel, Alexandra-WM	Sr	14	47	3.4			
6.	Banks, Rebekah-UNCW	Jr	15	50	3.3			
7.	Boyd, Brianna-COFC	Jr	12	35	2.9			
8.	Lee, Maia-Towson	So	14	39	2.8			
9.	Rhodes, Jenifer-ELON	Sr	14	37	2.6			
10.	Butler, Tasia-JMU	Jr	15	38	2.5			
11.	Johnson, Malaya-ELON	Jr	14	35	2.5			
12.	Dongmo, Sandra-Hofstra	Sr	15	37	2.5			
13.	Cuevas, Mary-Towson	Jr	15	36	2.4			
14.	Ruffin, Lenaira-ELON	Sr	14	33	2.4			
15.	Bolden, Breanna-COFC	Sr	15	35	2.3			
	Sally, Francesca-NU	Sr	15	35	2.3			

DEFENSIVE REBOUNDS					CI	G	No.	Avg/G
1.	Bolden, Breanna-COFC	Sr	15	110	7.3			
2.	Enabosi, Nicole-Delaware	So	14	101	7.2			
3.	Durant, Ashunae-Hofstra	Jr	15	97	6.5			
4.	Sally, Francesca-NU	Sr	15	94	6.3			
5.	Henry, Jordan-UNCW	Sr	14	84	6.0			
6.	Masaquel, Alexandra-WM	Sr	14	75	5.4			
7.	Hall, Precious-JMU	Sr	15	79	5.3			
8.	Johnson, Malaya-ELON	Jr	14	69	4.9			
9.	Burnett, Shay-ELON	Jr	14	64	4.6			
10.	Cuevas, Mary-Towson	Jr	15	67	4.5			
11.	Banks, Rebekah-UNCW	Jr	15	65	4.3			
12.	Smalls, Kamiah-JMU	Fr	13	54	4.2			
13.	Nicholas, Makeda-Delaware	Jr	15	55	3.7			
14.	Brown, Tanisha-COFC	Jr	15	54	3.6			
15.	Porter, Amber-JMU	Jr	15	53	3.5			

MINUTES PLAYED					CI	G	No.	Avg/G
1.	Genco, Jess-NU	So	15	589	39.3			
2.	Luciano, Krystal-Hofstra	Sr	15	563	37.5			
3.	Tremba, Marlena-WM	Sr	14	511	36.5			
4.	Bolden, Breanna-COFC	Sr	15	541	36.1			
5.	Durant, Ashunae-Hofstra	Jr	15	537	35.8			
6.	Brown, Erika-Delaware	Sr	15	527	35.1			
7.	Bankston, Raven-Towson	Sr	15	519	34.6			
8.	Ortiz, Claudia-NU	Jr	15	512	34.1			
9.	Hall, Precious-JMU	Sr	15	503	33.5			
10.	Creighton, Meghan-Drexel	Sr	15	502	33.5			