



KANSAS

#KUwbb

f /KANSASWOMENSBASKETBALL

t @KUWBBALL

i @KUWBBALL

FEB. 27, 2016 | GAME 28

CONTACTS: Theresa Kurtz (t.kurtz@ku.edu) | Kyle Charles (kylecharles@ku.edu)

JAYHAWKS

5-22 OVERALL

AP rank: --

Head Coach: Brandon Schneider Record: 406-160

0-16

USA Today rank: --

Record: 406-160



VS.



11-16 OVERALL

AP rank: --

Head Coach: Candi Whitaker

2-14

USA Today rank: --

Record: 115-149

LADY RAIDERS

2015-16 SCHEDULE



EXHIBITION GAMES

11.1	Pittsburg State	ESPN3	W, 80-54
11.8	Emporia State	JTV/ESPN3	W, 68-57



NON-CONFERENCE

11.15	Texas Southern	JTV/ESPN3	W, 72-65
11.19	Memphis	JTV/ESPN3	W, 72-63
11.23	at Arizona		L, 52-67
11.27	vs. Northern Illinois!		W, 66-58
11.28	vs. SMU!		L, 64-73
12.2	Creighton	JTV/ESPN3	W, 67-54
12.6	St. John's	JTV/ESPN3	L, 71-86
12.10	UMKC	JTV/ESPN3	L, 44-47
12.13	Navy	JTV/ESPN3	W, 61-54 (OT)
12.20	Washington State	JTV/ESPN3	L, 53-66
12.22	Oral Roberts	ESPN3	L, 63-70

! - SMU Thanksgiving Classic



BIG 12 CONFERENCE

12.30	at Oklahoma	FSSW+	L, 44-67
1.3	West Virginia	JTV/ESPN3	L, 45-65
1.6	Baylor	JTV/ESPN3	L, 40-58
1.9	at Iowa State	Cyclone.tv	L, 49-65
1.13	Texas	JTV/ESPN3	L, 38-75
1.16	at West Virginia	Roots Sports	L, 35-72
1.20	Kansas State	FS1	L, 46-59
1.24	Oklahoma State	JTV/ESPN3	L, 46-74
1.27	at Texas	LHN	L, 46-70
1.30	at Texas Tech	FSSW+	L, 44-54
2.2	Iowa State	JTV/ESPN3	L, 53-63
2.6	at Baylor	FSSW	L, 49-81
2.13	at Kansas State	TWCSC	L, 67-81
2.17	TCU	JTV/ESPN3	L, 44-70
2.20	Oklahoma	JTV/ESPN3	L, 66-72
2.24	at Oklahoma State	FOX Plus	L, 49-71
2.27	Texas Tech	JTV/ESPN3	7 p.m.
2.29	at TCU	FS1	6 p.m.



BIG 12 CONFERENCE CHAMPIONSHIP

3.4-7	TBA	FCS	TBA
-------	-----	-----	-----



KUATHLETICS.COM



JAYHAWK TELEVISION NETWORK



JAYHAWK RADIO NETWORK

KANSAS CONCLUDES 2015-16 HOME SLATE WITH TEXAS TECH

Kansas women's basketball hosts Texas Tech for its 2015-16 home finale on Saturday, Feb. 27 at 7 p.m., inside Allen Fieldhouse. The Jayhawks look to even the 2016 series with the Lady Raiders with a victory. The game will air on the Jayhawk Television Network and the Jayhawk Radio Network.



AROUND THE ARENA

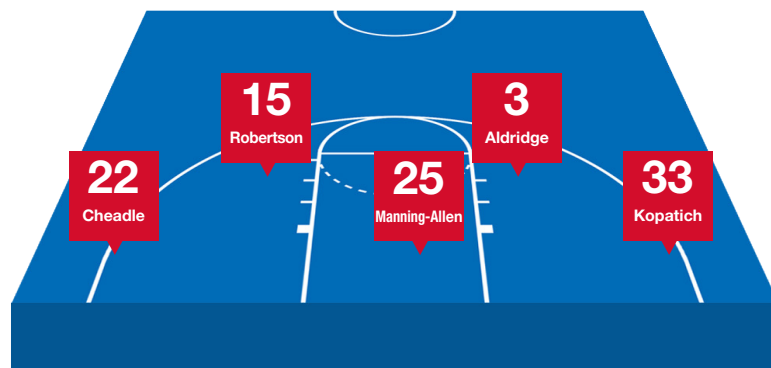
Kansas welcomes alumnae of the women's basketball program for the 2015-16 home finale on Saturday. Prior to the game, all former KU women's basketball players in attendance can be a part of a high five tunnel to greet the team. Court towels will be given away upon entrance to all fans, while supplies last.

KANSAS FASTBREAKS

- Kansas has won two of the last three final homes games of the season and look to make it two-straight with a victory over Texas Tech on Saturday night.
- The Jayhawks trail Texas Tech in the overall series, 17-9, and are 5-7 against the Lady Raiders when playing inside Allen Fieldhouse.
- Kansas has a record of 410-176 (.705) in Allen Fieldhouse. Over the last five seasons, Kansas has posted a 65-40 mark on its home court. This season, Kansas owns a 4-12 mark at home.
- When Brandon Schneider-coached teams are leading with less than five minutes to play, his overall record is 351-12, and 5-0 at Kansas.
- Sophomore guard Lauren Aldridge leads the Jayhawks in scoring with 10.5 points per game and has netted 17 double-figure scoring efforts in 2015-16.
- Aldridge netted a career-best 20 points against Oklahoma (2/20), the most points by a Jayhawk in a single game this season. She has logged double-digit scoring performances in three of the last five games.
- During her career, Aldridge has hit 36.2 percent of her attempts from behind the arc, which ninth all-time in Kansas history.
- Freshman guard Kylee Kopatich is averaging 32.6 minutes per game during her rookie season. Her minutes per game rank seventh in the Big 12 and second among freshmen in the league.
- Junior forward Caelynn Manning-Allen has swatted away a team-high 36 blocks this season, averaging 1.3 per game, and 78 blocks in her career. She needs 17 more to crack Kansas' top-10 season list and seven to etch her name into the junior record.

5-22	w-l	11-16
N/A	rank	N/A
53.6	ppg	62.7
35.7	fg%	38.1
31.4	3fg%	31.5
67.6	ft%	63.4
32.5	rpg	38.7
10.6	apg	12.1
3.4	bpg	3.1
7.5	spg	7.7

LAST GAME STARTERS



ABOUT THE JAYHAWKS

Kansas (5-22, 0-16 Big 12) awaits a rematch with Texas Tech for its home finale of the 2015-16 season. The Jayhawks first faced the Lady Raiders on Jan. 30 in Lubbock, where Texas Tech sank 10-of-12 free throws in the fourth quarter to earn the win, 54-44. The loss snapped a four-game winning streak against the Lady Raiders. The Jayhawks are 5-7 all-time against Texas Tech inside Allen Fieldhouse, but have won the two previous home matchups. A win on Saturday would not only draw the season series even, but also bury an 18-game losing streak and give Kansas its first win in Big 12 play this season.

The Jayhawks are facing a short turnaround after No. 17 Oklahoma State bested Kansas, 71-49, on Wednesday night. Senior guard Brittney Martin proved to be a tough matchup, tallying a game-high 24 points and pulling down seven rebounds. The Cowgirls' size inside, primarily with sophomore center Kaylee Jensen, also caused problems for the Jayhawks. Jensen finished the night with 18 points and a game-high 12 rebounds, and the Cowgirls collected 34 points in the paint.

Sophomore guard Lauren Aldridge put in a team-high 13 points, her team-leading 17th double-digit scoring effort this season. Freshman forward Tyler Johnson also cracked the double-figure mark, recording the game's final basket to finish the night with 11 points. The two combined for 16 points in the second half, more than 50 percent of the Jayhawks' total offense. Freshman guard Kylee Kopatich dished out a career-high five assists, leading the Jayhawks in dimes for the second time this season. Kansas totaled 11 assists on the night, its fifth-straight game with 10 or more.

As a team, the Jayhawks now hold the sixth-best three-point field goal percentage (.314) in the Big 12, just edged out by the Lady Raiders (.315). Both teams struggled from beyond the arc in the prior matchup this season. The Jayhawks made just 3-of-16 three-point field goals, while Texas Tech connected on 3-of-11 long-range shots.

On Wednesday, Kansas shot 87.5 percent from the free throw line, but only on 7-of-8 attempts. The Jayhawks rank fifth in the Big 12 in free throw percentage (.676), but earn trips to the charity stripe far less often than their opposition. Kansas' 327 free throw attempts are the least among conference opponents, and 97 fewer than Texas Tech (424), the team ranked ninth in free throws attempted.

A Kansas win would be its first since the 19-point comeback, overtime victory over Navy on Dec. 13. Kansas' magic number for Saturday might be 65; when allowing more than 65 points from opponents this season, the Jayhawks are 0-13. In Kansas' five wins this season, the Jayhawks netted 65 or more in four of them.

SCOUTING THE LADY RAIDERS

Texas Tech is 11-16 on the season and 2-14 in the Big 12 after surrendering an early lead to No. 8 Texas on Wednesday, and eventually falling to the Longhorns, 76-55. The Lady Raiders took off on a 16-0 run in the first quarter, but were outscored 22-5 in the second quarter and never regained the lead in the second half. Texas Tech is now 0-6 since its win over the Jayhawks in Lubbock on Jan. 30.

The Lady Raiders were picked to finish ninth in the Big 12 by the coaches' preseason poll, after a last-place finish a season ago, with a 5-13 record in conference play. Texas Tech's first Big 12 win this season came against Iowa State in a 69-66 overtime victory. Both Kansas and Texas Tech are 1-0 in overtime games this season. In the first installment of the season series, freshman guard Japreece Dean led the Lady Raiders in points (21), rebounds (8) and assists (4). Dean shot just 4-of-13 from the field, but converted on 11 free throws, many coming in the waning moments of the game to seal the victory.

Redshirt junior guard Ivonne CookTaylor is Texas Tech's leading scorer and rebounder, averaging 13.9 points and 5.4 rebounds per game. CookTaylor ranks ninth in the Big 12 in scoring and 17th in rebounding, and is the only Lady Raider to start every game this season. While averaging less than two three-point field goal attempts per game, CookTaylor does hold the team's best average from beyond the arc, making 35.6 percent of her tries.

Freshman guard Japreece Dean and senior guard Rayven Brooks pick up the bulk of the team's minutes and production along with CookTaylor. Dean averages 11.6 points per game, second among freshmen in the conference, while Brooks contributes 8.9 points per contest. Dean and Brooks rank 10th and 15th in the Big 12 in assists, with 3.26 and 2.67 per game, respectively. Dean is a sharpshooter from the free throw line, making 78.4 percent of her attempts, the fourth-best mark in the Big 12 and first among freshmen. Brooks is not far behind with a .781 average from the charity stripe, and has netted more three-pointers this season (40) than any other Lady Raider.

Texas Tech ranks one spot ahead of Kansas in scoring offense (62.7/gm.) and in scoring defense (65.8/gm.). The Lady Raiders and the Jayhawks are the only Big 12 teams to own a negative scoring margin, at -3.1 and -13.1, respectively. Texas Tech and Kansas also claim the two lowest assist/turnover ratios in the Big 12, and will look to take better care of the ball when they face off on Saturday. Kansas will, once again, try to limit the Lady Raiders' efforts on the offensive glass. In the first matchup this season, the Jayhawks held Texas Tech to just six offensive rebounds. On the year, the Lady Raiders average 14.11 boards on the offensive glass per game, third-best in the Big 12.

SEASON/CAREER SUPERLATIVES**GAMES PLAYED/STARTED**

	2015-16	CAREER	STREAK
Lauren Aldridge	27/27	59/59	59
Chayla Cheadle	27/19	59/48	15
Kylee Kopatich	27/26	27/26	11
Caelynn Manning-Allen	27/24	77/28	8
Aisia Robertson	27/17	27/17	7
Timeka O'Neal	27/5	28/5	—
Jada Brown	27/8	89/52	—
Jayde Christopher	27/5	27/5	—
Tyler Johnson	27/3	27/3	—
Lorraine Enabulele	4/0	17/0	—
Chelsea Lott	7/0	7/0	—

DOUBLE-DIGIT GAMES POINTS

	2015-16	CAREER
Lauren Aldridge	17	31
Kylee Kopatich	14	14
Caelynn Manning-Allen	9	10
Chayla Cheadle	3	11
Jada Brown	2	4
Timeka O'Neal	3	3
Tyler Johnson	3	3
Aisia Robertson	2	2

REBOUNDS

	2015-16	CAREER
Caelynn Manning-Allen	2	3
Tyler Johnson	1	1
Kylee Kopatich	1	1

20+ POINTS

	2015-16	CAREER
Lauren Aldridge	1	1

8+ REBOUNDS

	2015-16	CAREER
Caelynn Manning-Allen	44	6
Jada Brown	2	4
Tyler Johnson	1	1
Kylee Kopatich	1	1
Chayla Cheadle	1	2

5+ ASSISTS

	2015-16	CAREER
Lauren Aldridge	3	20
Jayde Christopher	1	1
Kylee Kopatich	1	1
Caelynn Manning-Allen	1	1

3+ BLOCKS

	2015-16	CAREER
Caelynn Manning-Allen	6	7
Tyler Johnson	4	4
Chayla Cheadle	—	1

DOUBLE-DOUBLE TRACKER

PLAYER	2015-16	CAREER
Manning-Allen	2	2
Kopatich	1	1

ASSOCIATED PRESS TOP-25 POLL

1	UConn (32)	26-0
2	Notre Dame	25-1
3	South Carolina	25-1
4	Baylor	27-1
5	Ohio State	23-4
6	Maryland	25-3
7	Oregon State	24-3
8	Texas	24-2
9	Arizona State	24-4
10	Louisville	22-6
11	Texas A&M	20-7
12	Florida State	21-5
13	Stanford	22-6
14	UCLA	20-7
15	Kentucky	19-6
16	Mississippi State	22-6
17	Miami	22-5
18	Syracuse	22-6
19	DePaul	23-7
20	Michigan State	20-7
21	South Florida	19-7
22	Oklahoma State	19-7
23	Oklahoma	18-8
24	Missouri	21-6
25	Colorado State	24-1

as of Feb. 22, 2016

USA TODAY TOP-25 POLL

1	UConn (32)	26-0
2	South Carolina	26-1
3	Notre Dame	26-1
4	Baylor	26-1
5	Ohio State	23-4
6	Maryland	25-3
7	Oregon State	24-3
8	Texas	24-2
9	Arizona State	24-4
10	Louisville	22-6
11	Texas A&M	20-7
12	Florida State	21-6
13	Stanford	22-6
14	Kentucky	19-6
15	UCLA	20-7
16	Mississippi State	22-6
17	Miami	22-5
18	Syracuse	22-6
19	DePaul	23-7
20	South Florida	19-7
21	Michigan State	20-7
22	BYU	23-4
23	Oklahoma	18-9
24	Missouri	21-6
25	Colorado State	24-1

as of Feb. 22, 2016

BIG 12 CORNER**2015-16 Preseason Poll**

1	Baylor (8)	80
2	Texas (1)	70
3	Oklahoma (1)	69
4	Iowa State	48
5	TCU	47
6	West Virginia	40
7	Kansas State	36
8	Oklahoma State	27
9	Texas Tech	18
10	Kansas	15

THIS DAY IN KU WOMEN'S BASKETBALL HISTORY**Record on Feb. 27: 3-5**

Kansas women's basketball will play on the 27th day of February for the ninth time in program history. In 1988, Kansas defeated rival Missouri, 80-72, on the road in the regular season finale. The Jayhawks shot 58.5 percent from the field, while the Tigers connected on 34.3 percent shooting from the field. The Jayhawks were led by Lisa Baker, who contributed a double-double with 19 points and 14 rebounds.

PAIR OF JAYHAWKS EARN ACADEMIC ALL-BIG 12 HONORS

For the first time since 2012, Kansas women's basketball had multiple first-team honorees earn academic honors, after junior forward Caelynn Manning-Allen and sophomore guard Lauren Aldridge were named Academic All-Big 12 First Team selections. This marks the third conference academic honor for Manning-Allen, while Aldridge garnered academic rookie honors last season.

TOUGH AND TOGETHER

First-year head coach Brandon Schneider has brought a "tough and together" culture to Allen Fieldhouse and Kansas women's basketball. The Jayhawks begin every practice with t and t, which is short for tough and together. Schneider has vowed that his squads will compete and play together every day. Whether the Jayhawks are hitting the floor, flying over the scorers' table or passing to a teammate, they will play tough and together.

ONE - TWO - THREE!

On the season, Kansas is connecting on 31.4 percent of its shots from beyond the arc. Both redshirt junior guard Timeka O'Neal and sophomore guard Lauren Aldridge are shooting above average, making 40.6 and 37.3 percent of their long-range shots, respectively.

THE YOUNG AND THE RESTLESS

The Jayhawks are the only team in the Big 12 without a senior on their roster. In fact, Kansas will not face another team during the regular season that does not have at least one senior on its squad. The last time a Kansas roster did not include a senior was the 2002-03 season. The Jayhawks, along with West Virginia, boast the most underclassmen on their respective rosters with 10 each.

INSIDE THE PAINT

Kansas is averaging 23.0 points per game in the paint. The Jayhawks have recorded 30 or more points in the paint on seven different occasions, including a season-high 48 against Oral Roberts (12/22). During the 2012-13 season, KU had two games with 68 or more points in the paint.

ALDRIDGE NAMED COSIDA ACADEMIC ALL-DISTRICT

Kansas sophomore Lauren Aldridge has paced the Kansas women's basketball team on the hardwood all season, but it's not just her work ethic on the court that deserves recognition. Aldridge's achievements in the classroom have garnered attention after being named to the 2016 CoSIDA Academic All-District selection. To be nominated for CoSIDA Academic All-District honors, a student-athlete must be a starter or important reserve with at least a 3.30 cumulative grade point average (on a 4.0 scale) at their current institution. Nominated athletes must have participated in at least 50 percent of the team's games.

TOURNAMENT-TESTED

The Jayhawks will face 12 teams this season with postseason experience from the year prior. Familiar Big 12 foes Baylor, Texas, Iowa State, Oklahoma and Oklahoma State all advanced to the 2015 NCAA Tournament. TCU, Kansas State, West Virginia, Texas Southern, St. John's and Washington State all were invited to the Women's National Invitational Tournament at the end of last season. Oral Roberts was selected to play in the Women's Basketball Invitational, advancing to the semifinal before losing a one-point game to eventual tournament champion, University of Louisiana Lafayette. Kansas currently holds a 1-18 record this season against teams that played in the postseason a year ago.

BUILDING FOR THE FUTURE

This offseason, Schneider and his staff brought two highly-touted transfers to Lawrence in McKenzie Calvert and Jessica Washington. A five-star recruit out of high school, Calvert was ranked the No. 16 prospect in her class by ESPN's HoopGurlz. Washington will add to KU's backcourt presence after playing two seasons at North Carolina. When she suits up for the first time in 2016-17, Washington will be only the second McDonald's All-American to wear the Crimson and Blue. Both Calvert and Washington will sit out during the 2015-16 season to comply with NCAA transfer rules.

KANSAS IN THE SPOTLIGHT

Kansas is among one of the most televised women's basketball programs in the country. The Jayhawks have two games featured on FOX Sports Network, while every home game aired on the new Jayhawk Television Network/ESPN3. KU is scheduled to play 28 contests in 2015-16 on television, that's three more than a year ago.

HAWK TALK WITH COACH BRANDON

"Hawk Talk" with Kansas women's basketball head coach Brandon Schneider is scheduled to begin after exhibition play, with the first show slated for Thursday, Nov. 12 at Henry T's. Each week Schneider will be joined by a player guest. "Hawk Talk" allows fans to ask Schneider questions and hear the latest Kansas women's basketball news. There will be a total of 15 "Hawk Talks" during the 2015-16 season. The show will air Thursdays from 6-7 p.m., with a few exceptions.

UP NEXT

Kansas finishes the 2015-16 regular season on the road with the final meeting against TCU on Monday, Feb. 29 at 7 p.m., inside Schollmaier Arena. The game will be broadcast on FSN and the Jayhawk Radio Network.

QUICK FACTS

School: University of Kansas
 Location: Lawrence, Kan.
 Founded: 1866
 Mascot: Jayhawks
 Conference: Big 12
 Enrollment: 27,983
 Colors: Crimson and Blue
 Arena: Allen Fieldhouse
 Capacity: 16,300
 Chancellor: Dr. Bernadette Gray-Little
 Athletics Director: Dr. Sheahon Zenger
 Associate AD/SWA: Debbie Van Saun
 Internet Address www.kuathletics.com

TEAM HISTORY

First Season of Basketball. 1968-69
 All-Time Record 790-590 (.580)
 All-Time Big 12 Record 119-209 (.381)
 NCCA Tournament Appearances (Last) 13 (2013)
 WNIT Appearances (Last) seven (2011)
 AIAW Postseason (Last) three (1981)
 Last Postseason Opponent. Notre Dame (3/31/13)
 Result L, 63-93 in Norfolk, Va.

COACHING STAFF

Head Coach Brandon Schneider
 Alma Mater Wayland Baptist, 1995
 Record at KU 5-22
 Overall Record 406-160 (17 Seasons)
 Associate Head Coach Aqua Franklin
 Assistant Coaches Katie O'Connor
 Damitria Buchanan

SUPPORT STAFF

Director of Player Development Andy Majors
 Director of Basketball Operations. Donease Smith
 Graduate Student Manager Natalie Knight
 Athletic Trainer Ann Wallace
 Asst. AD of Sports Performance Andrea Hudy
 Asst. Strength & Conditioning Coach Glenn Cain

KANSAS COMMUNICATIONS

Primary Contact Theresa Kurtz
 Office Phone 785-864-7488
 Cell Phone 785-312-1053
 Email t.kurtz@ku.edu
 Secondary Contact Kyle Charles
 Email kylecharles@ku.edu
 Website KUathletics.com

NUMERICAL ROSTER

No.	Name	Pos.	Ht.	Yr.	Hometown (High School/Previous School)
1	Chelsea Lott	C	6-3	Fr.	Fresno, Texas (Fort Bend Hightower HS)
2	McKenzie Calvert	G	5-9	So.	Schertz, Texas (Byron P. Steele HS/ USC)
3	Lauren Aldridge	G	5-7	So.	Marshfield, Mo. (Marshfield HS)
4	Jada Brown	F	6-0	Jr.	Las Vegas, Nev. (Centennial HS)
12	Timeka O'Neal	G	5-4	R-Jr.	Raytown, Mo. (Raytown HS/Johnson County CC)
13	Lorraine Enabulele	F	6-0	So.	Ajax, Ontario, Canada (Notre Dame Catholic Secondary)
15	Aisia Robertson	G	5-7	Fr.	San Francisco, California (Bishop O'Dowd HS)
20	Jayde Christopher	G	5-8	Fr.	Federal Way, Wash. (Cleveland HS)
21	Sydney Benoit	G	5-10	Jr.	Smith Center, Kan. (Smith Center HS/ Hutchinson CC)
22	Chayla Cheadle	G	6-0	So.	Columbia, Mo. (Rock Bridge HS)
25	Caelynn Manning-Allen	F	6-4	Jr.	Chicago, Ill. (Curie HS)
30	Jessica Washington	G	5-8	Jr.	Tulsa, Okla. (Jenks HS/North Carolina)
33	Kylee Kopatich	G	5-10	Fr.	Olathe, Kan. (Olathe South HS)
44	Kelea Dennis	G	6-1	Fr.	Oakland, Calif. (Piedmont HS)
55	Tyler Johnson	F	6-2	Fr.	Leavenworth, Kan. (Leavenworth HS)

ALPHABETICAL ROSTER

No.	Name	Pos.	Ht.	Yr.	Hometown (High School/Previous School)
3	Lauren Aldridge	G	5-7	Fr.	Marshfield, Mo. (Marshfield HS)
21	Sydney Benoit	G	5-10	Jr.	Smith Center, Kan. (Smith Center HS/Hutchinson CC)
4	Jada Brown	F	6-0	Jr.	Las Vegas, Nev. (Centennial HS)
2	McKenzie Calvert	G	5-9	So.	Schertz, Texas (Byron P. Steele HS/USC)
22	Chayla Cheadle	G	6-0	So.	Columbia, Mo. (Rock Bridge HS)
20	Jayde Christopher	G	5-8	Fr.	Federal Way, Wash. (Cleveland HS)
44	Kelea Dennis	G	6-1	Fr.	Oakland, Calif. (Piedmont HS)
13	Lorraine Enabulele	F	6-0	So.	Ajax, Ontario, Canada (Notre Dame Catholic Secondary)
55	Tyler Johnson	F	6-2	Fr.	Leavenworth, Kan. (Leavenworth HS)
33	Kylee Kopatich	G	5-10	Fr.	Olathe, Kan. (Olathe South HS)
1	Chelsea Lott	C	6-3	Fr.	Fresno, Texas (Fort Bend Hightower HS)
25	Caelynn Manning-Allen	F	6-4	Jr.	Chicago, Ill. (Curie HS)
12	Timeka O'Neal	G	5-4	R-Jr.	Raytown, Mo. (Raytown HS/Johnson County CC)
15	Aisia Robertson	G	5-7	Fr.	San Francisco, California (Bishop O'Dowd HS)
30	Jessica Washington	G	5-8	Jr.	Tulsa, Okla. (Jenks HS/ North Carolina)

COACHES AND STAFF

Head Coach. Brandon Schneider (Wayland Baptist, 1995)
 Associate Head Coach Aqua Franklin (Texas A&M, 2009)
 Assistant Coach Katie O'Connor (Virginia Tech, 2000)
 Assistant Coach Damitria Buchanan (Texas A&M, 2010)
 Director of Player Development Andy Majors (Pittsburg State, 2006)
 Director of Basketball Operations Donease Smith (Central Missouri, 1998)
 Graduate Student Manager. Natalie Knight (Kansas, 2015)

PRONUNCIATION GUIDE

CHAYLA CHEADLE SHAY-luh Chee-dull
KELEA Dennis Kuh-lee-uh
 Lorraine **ENABULELE** Eh-NAY-Boo-lee-lay
 Kylee **KOPATICH** Coe-pat-ich
TIMEKA O'Neal. Tah-MEEK-uh
AISIA ROBERTSON Asia

BROADCAST ROSTER



CHELSEA LOTT
C • 6-3 • FR
FRESNO, TEXAS



MCKENZIE CALVERT
G • 5-9 • SO
SCHERTZ, TEXAS



LAUREN ALDRIDGE
G • 5-7 • SO
MARSHFIELD, MISSOURI



JADA BROWN
F • 6-0 • JR
LAS VEGAS, NEVADA



TIMEKA O'NEAL
G • 5-4 • R-JR
RAYTOWN, MISSOURI



LORRAINE ENABULELE
F • 6-0 • SO
AJAX, TORONTO, CANADA



AISIA ROBERTSON
G • 5-7 • FR
SAN FRANCISCO, CALIFORNIA



JAYDE CHRISTOPHER
G • 5-8 • FR
FEDERAL WAY, WASHINGTON



SYDNEY BENOIT
G • 5-10 • JR
SMITH CENTER, KANSAS



CHAYLA CHEADLE
G • 6-0 • SO
COLUMBIA, MISSOURI



CAELYNN MANNING-ALLEN
F • 6-4 • JR
CHICAGO, ILLINOIS



JESSICA WASHINGTON
G • 5-8 • JR
TULSA, OKLAHOMA



KYLEE KOPATICH
G • 5-10 • FR
OLATHE, KANSAS



KELEA DENNIS
G • 6-1 • FR
OAKLAND, CALIFORNIA



TYLER JOHNSON
F • 6-2 • FR
LEAVENWORTH, KANSAS



BRANDON SCHNEIDER

POSITION

HEAD COACH

ALMA MATER

WAYLAND BAPTIST, '95

HOMETOWN

CANYON, TEXAS

WIFE

ALI

CHILDREN

CASH & COLE

Path to Kansas

2015-



2010-15



1998-2010



1995-98



Brandon Schneider became the sixth head coach to lead Kansas women's basketball when he was hired on April 20, 2015.

Schneider comes to Kansas after a five-year stint at Stephen F. Austin, where he returned SFA to the top of the Southland Conference. SFA won back-to-back league titles in 2013-14 and 2014-15 and the Ladyjacks made three postseason appearances during his time at the helm of the program. As head coach at Stephen F. Austin, Schneider was 95-66 overall in five years and 57-29 in Southland Conference (SLC) play.

During the 2014-15 season, Schneider guided the Ladyjacks to their second-straight Southland Conference title and a 23-8 overall record, marking the third time in his tenure that SFA reached the 20-win plateau. Schneider was named Southland Coach of the Year after the Ladyjacks finished with a 16-2 league mark. He mentored a handful of All-SLC Players during his time in Nacogdoches, including 2014-15 SLC Player of the Year Porsha Roberts, who was also a two-time Defensive Player of the Year.

After losing multiple starters throughout 2013-14 due to injuries, Schneider and his staff made adjustments to see the Ladyjacks finish the regular season with a 9-2 mark, including a victory in their final six matchups. SFA overcame a five-game deficit in the Southland standings to tie for the regular-season crown, SFA's first since 2010 and 16th overall.

The Ladyjacks finished the campaign with a 23-13 record and became the first team in school history to win three games in a postseason tournament. SFA defeated Texas State and Boise State at home during the Women's Basketball Invitational (WBI) and bested College of Charleston on the road to advance to the title game where SFA fell to Illinois-Chicago, 73-64.

Schneider saw his team's top player, Roberts, win Southland Conference Defensive Player of the Year accolades and become the all-time blocks leader in SFA history. Roberts averaged 17.0 points per game and shot an impressive 56.3 percent from the field. Her shooting percentage improved during league play where she hit 58.7 percent of her shots. Roberts was named first team All-Southland Conference and received all-tournament honors during the WBI.

During 2012-13, SFA concluded the season with a 14-17 overall mark and an 8-10 record in conference action. At the end of the regular season, Roberts once again claimed conference honors after being named to the All-Southland Conference Second Team and Defensive Team. The Ladyjacks won their opening game at the SLC Tournament before falling to Lamar, 69-65, ending the year.

In just his second season at SFA, Schneider guided the Ladyjacks to the Southland Conference Tournament Championship and a 23-win season in 2011-12. It was the most wins by a Ladyjack team since the 2005-06 season when SFA also won 23 games and just the fifth 20-win season of the decade. The increase in 11 wins from the 2010-11 season (12) to 2011-12 (23) was tied for the sixth-biggest turnaround in the nation.

Under Schneider's guidance, Roberts was named the 2011-12 Southland Conference Freshman of the Year, while Ashlee Mellis was selected as the SLC Newcomer of the Year. Additionally, Schneider assembled a signing class that ranked 35th in the nation according to Premier Basketball Report, including four McDonald's All-American nominees.

In his first full season as head coach of the Ladyjack basketball program, Schneider led SFA to a 12-18 overall record and a 9-7 mark in conference play. The Ladyjacks clinched a trip to the Southland Conference Championship Tournament and nearly pulled off an upset of No. 3 Central Arkansas in the first round before falling, 64-58.

Schneider also oversaw the development of senior guard Tammara Marion, who was named to the All-Southland Conference Second Team. In 2010-11, Marion led the Ladyjacks and was fourth in the league averaging 16 points per game along with 3.2 rebounds and 3.2 assists. She also set the single-season record with 72 made three-point shots. The Ladyjacks topped the conference in offensive rebounding with 16.8 boards per game.

The Canyon, Texas native is the second all-time winningest head coach at the NCAA Division II level. At Emporia State, Schneider led the Lady Hornets to a 306-72 (.810) record, and the 2010 NCAA Division II National Championship. The school's all-time leader in wins and winning percentage, Schneider ranks among the all-time top 10 in fastest coaches to 100 victories, and third fastest among women's basketball

coaches.

In 12 seasons at ESU, Schneider guided the Lady Hornets to 11 NCAA Tournament appearances. During that stretch, Schneider's teams recorded two 30-win seasons and nine 20-win campaigns. Along with the 2010 national championship, Schneider coached ESU to four NCAA Division II South Central Regional titles, two Final Four appearances, six regular-season conference crowns and three league tournament titles.

Schneider made it tough on conference opponents during his time with the Lady Hornets winning 80 percent of those games. ESU posted a 173-43 (.801) record versus Mid-America Intercollegiate Athletic Association (MIAA) foes. The Lady Hornets were nearly unbeatable at home sporting a 143-14 (.917) record during his tenure. Schneider posted a 39-26 (.600) record against nationally-ranked opponents, which included four wins over No. 1-ranked teams, and was 21-10 (.677) in the NCAA Tournament.

The first MIAA rookie head coach to win both the MIAA regular-season and tournament titles, Schneider was voted the Kansas Basketball Coaches Association of four-year colleges Coach of the Year in 2006. He was also a three-time MIAA Coach of the Year.

The 2010 Bulletin Women's Basketball National Coach of the Year and the WBCA South Central Region Coach of the Year, Schneider's players have reaped the rewards of his guidance. He has coached seven All-Americans, including two NCAA Division II Player of the Year selections, 13 first-team All-MIAA honorees, eight conference MVPs and seven players have gone on to play professionally, including one in the WNBA.

Well respected for being able to attract some of the nation's top talent on the recruiting trail, Schneider signed six National Junior College Athletic Association (NJCAA) All-Americans and four high school All-Americans to play for the Lady Hornets.

A 1995 honors graduate of Wayland Baptist, Schneider was a four-year letterman in men's basketball and was the school's first-ever academic All-American, capturing the honor three times.

Schneider's father, Bob, was one of the most successful women's coaches at the NCAA Division II level, having served as the head coach at West Texas A&M from 1981-2006. They became the first father/son combination to take teams to the Elite Eight.

Schneider and his wife Ali, have two sons, Cash and Cole.

SCHNEIDER'S CAREER RECORD

EMPORIA STATE			
Season	Overall	Conf.	Notes
1998-99	30-3	15-1	NCAA Division II Final Four
1999-00	28-4	16-2	NCAA Division II Elite Eight
2000-01	28-2	17-1	NCAA Division II Sweet 16
2001-02	16-12	8-10	
2002-03	23-8	14-4	NCAA Division II Regional Final
2003-04	24-5	15-3	NCAA Division II Regional Final
2004-05	27-6	14-4	NCAA Division II Sweet 16
2005-06	28-5	13-3	NCAA Division II Elite Eight
2006-07	22-8	14-4	NCAA Division II First Round
2007-08	23-8	14-4	NCAA Division II Sweet 16
2008-09	26-6	17-3	NCAA Division II Regional Final
2009-10	30-5	16-4	NCAA Division II National Champion
	306-72	173-43	

STEPHEN F. AUSTIN			
Season	Overall	Conf.	Notes
2010-11	12-18	9-7	
2011-12	23-10	11-5	WBI First Round
2012-13	14-17	8-10	
2013-14	23-13	13-5	Southland Conf. Regular-Season Champion, WBI Runner-Up
2014-15	23-8	16-2	Southland Conf. Regular-Season Champion, WNIT First Round
	95-66	57-29	

KANSAS			
Season	Overall	Conf.	Notes
2015-16	5-22	0-16	
Total	406-160	230-88	

2015-16 OVERALL STATS

2015-16 Kansas Basketball
Kansas Season Box Score (as of Feb 24, 2016)
All games

RECORD:	OVERALL	HOME	AWAY	NEUTRAL
ALL GAMES	5-22	4-12	0-10	1-0
CONFERENCE	0-16	0-8	0-8	0-0
NON-CONFERENCE	5-6	4-4	0-2	1-0

#	Player	gp-gs	min	avg	Total		3-Point		F-Throw		Rebounds				pf	dq	a	to	blk	stl	pts	avg	
					fg-fga	fg%	3fg-fga	3fg%	ft-fa	ft%	off	def	tot	avg									
03	Aldridge, Lauren	27-27	941	34.9	97-264	.367	56-150	.373	33-40	.825	9	39	48	1.8	48	1	63	60	0	26	283	10.5	
33	Kopatich, Kylee	27-26	881	32.6	84-266	.316	41-148	.277	50-62	.806	23	98	121	4.5	60	0	40	55	10	36	259	9.6	
25	ManningAllen,Caelynn	27-24	604	22.4	79-190	.416	0-0	.000	38-58	.655	48	93	141	5.2	74	1	12	78	36	22	196	7.3	
12	O'Neal, Timeka	27-5	490	18.1	49-137	.358	41-101	.406	5-8	.625	5	36	41	1.5	36	1	23	34	0	14	144	5.3	
22	Cheadle, Chayla	27-19	578	21.4	52-168	.310	10-51	.196	24-40	.600	40	49	89	3.3	68	3	37	45	3	26	138	5.1	
55	Johnson, Tyler	27-3	451	16.7	59-115	.513	0-0	.000	7-17	.412	25	68	93	3.4	61	0	10	32	23	14	125	4.6	
04	Brown, Jada	27-8	553	20.5	43-107	.402	3-16	.188	32-49	.653	48	47	95	3.5	60	0	15	54	7	19	121	4.5	
15	Robertson, Aisia	27-18	479	17.7	45-164	.274	8-33	.242	18-28	.643	16	80	96	3.6	67	1	31	69	8	34	116	4.3	
20	Christopher, Jayde	27-5	412	15.3	22-72	.306	2-14	.143	12-23	.522	8	19	27	1.0	26	0	53	38	1	12	58	2.1	
01	Lott, Chelsea	7-0	25	3.6	1-6	.167	0-0	.000	2-2	1.000	3	5	8	1.1	7	0	0	6	3	0	4	0.6	
13	Enabulele, Lorraine	4-0	11	2.8	1-2	.500	0-0	.000	0-0	.000	2	0	2	0.5	3	0	1	1	0	0	2	0.5	
Team											61	56	117										
Total.....		27	5425		532-1491	.357	161-513	.314	221-327	.676	288	590	878	32.5	510	7	285	486	91	203	1446	53.6	
Opponents.....		27	5424		665-1493	.445	136-391	.348	334-479	.697	305	716	1021	37.8	397	-	363	433	133	227	1800	66.7	

Score by Periods	1st	2nd	3rd	4th	OT	Totals
Kansas	309	351	384	393	9	1446
Opponents	438	427	470	463	2	1800

2015-16 CONFERENCE STATS

2015-16 Kansas Basketball
Kansas Season Box Score (as of Feb 24, 2016)
Conference games

RECORD:	OVERALL	HOME	AWAY	NEUTRAL
ALL GAMES	0-16	0-8	0-8	0-0
CONFERENCE	0-16	0-8	0-8	0-0
NON-CONFERENCE	0-0	0-0	0-0	0-0

#	Player	gp-gs	min	avg	Total		3-Point		F-Throw		Rebounds			pf	dq	a	to	blk	stl	pts	avg	
					fg-fga	fg%	3fg-fga	3fg%	ft-fa	ft%	off	def	tot									avg
03	Aldridge, Lauren	16-16	551	34.4	48-142	.338	31-85	.365	13-14	.929	7	24	31	1.9	28	1	37	37	0	15	140	8.8
33	Kopatich, Kylee	16-15	515	32.2	44-149	.295	23-82	.280	21-24	.875	10	46	56	3.5	37	0	21	35	6	24	132	8.3
22	Cheadle, Chayla	16-15	349	21.8	34-102	.333	7-30	.233	18-32	.563	29	36	65	4.1	41	2	24	31	2	17	93	5.8
25	ManningAllen,Caelynn	16-14	311	19.4	35-105	.333	0-0	.000	16-22	.727	23	40	63	3.9	47	1	9	48	14	14	86	5.4
12	O'Neal, Timeka	16-4	297	18.6	28-88	.318	26-67	.388	2-4	.500	3	22	25	1.6	14	0	12	24	0	10	84	5.3
55	Johnson, Tyler	16-2	318	19.9	35-70	.500	0-0	.000	6-12	.500	13	38	51	3.2	41	0	8	23	11	10	76	4.8
15	Robertson, Aisia	16-10	289	18.1	27-102	.265	7-22	.318	7-11	.636	7	44	51	3.2	40	0	18	44	7	20	68	4.3
04	Brown, Jada	16-1	290	18.1	19-49	.388	2-5	.400	20-26	.769	19	26	45	2.8	39	0	9	28	5	9	60	3.8
20	Christopher, Jayde	16-3	260	16.3	8-36	.222	0-7	.000	4-10	.400	8	8	16	1.0	15	0	22	30	1	8	20	1.3
01	Lott, Chelsea	5-0	15	3.0	0-4	.000	0-0	.000	2-2	1.000	2	2	4	0.8	6	0	0	4	1	0	2	0.4
13	Enabulele, Lorraine	2-0	5	2.5	0-0	.000	0-0	.000	0-0	.000	0	0	0	0.0	1	0	1	0	0	0	0	0.0
Team											31	29	60				11					
Total.....		16	3200		278-847	.328	96-298	.322	109-157	.694	152	315	467	29.2	309	4	161	315	47	127	761	47.6
Opponents.....		16	3199		409-873	.469	69-206	.335	210-297	.707	188	432	620	38.8	203	-	234	267	84	141	1097	68.6

Score by Periods	1st	2nd	3rd	4th	Totals
Kansas	158	172	203	228	761
Opponents	262	263	292	280	1097

BIG 12 CONFERENCE CORNER

BIG 12 STANDINGS

School	Record	Conference Record
Baylor	28-1	15-1
Texas	25-2	14-2
Oklahoma State	20-7	10-6
West Virginia	21-8	10-6
Oklahoma	18-9	9-7
Kansas State	18-9	8-8
TCU	15-12	7-9
Iowa State	13-14	5-11
Texas Tech	11-16	2-14
Kansas	5-22	0-16

2015-16 BIG 12 PLAYER OF THE WEEK

Date	Player	School
11/16	Leashja Grant	Texas Tech
11/23	Nina Davis	Baylor
11/30	Brittney Martin	Oklahoma State
12/7	Brittney Martin	Oklahoma State
	Imani Boyette	Texas
12/14	Empress Davenport	Texas
12/21	Nina Davis	Baylor
12/28	Brittney Martin	Oklahoma State
1/4	Imani Boyette	Texas
1/11	Imani Boyette	Texas
1/18	Alexis Jones	Texas
1/25	Britney Martin	Oklahoma State
2/1	Peyton Little	Oklahoma
2/8	Britney Martin	Oklahoma State
2/15	Zahna Medley	TCU
2/22	Niya Johnson	Baylor

2015-16 BIG 12 FRESHMAN OF THE WEEK

Date	Player	School
11/16	Bridget Carleton	Iowa State
11/23	Kalani Brown	Baylor
11/30	Lashann	Texas
12/7	Meredith Burkhall	Iowa State
12/14	Japreece Dean	Texas Tech
12/21	Bridget Carlton	Iowa State
	Japreece Dean	Texas Tech
12/28	Beatrice Mompremier	Baylor
1/4	Japreece Dean	Texas
1/11	Tynice Martin	West Virginia
1/18	Japreece Dean	Texas Tech
	Tynice Martin	West Virginia
1/25	Bridget Carleton	Iowa State
2/1	Bridget Carleton	Iowa State
2/8	Japreece Dean	Texas Tech
2/15	Bridget Carleton	Iowa State
2/22	Kalani Brown	Baylor

2015-16 TEAM STATS

TEAM STATISTICS	KU	OPP
SCORING	1446	1800
Points per game	53.6	66.7
Scoring margin	-13.1	-
FIELD GOALS-ATT	532-1491	665-1493
Field goal pct	.357	.445
3 POINT FG-ATT	161-513	136-391
3-point FG pct	.314	.348
3-pt FG made per game	6.0	5.0
FREE THROWS-ATT	221-327	334-479
Free throw pct	.676	.697
F-Throws made per game	8.2	12.4
REBOUNDS	878	1021
Rebounds per game	32.5	37.8
Rebounding margin	-5.3	-
ASSISTS	285	363
Assists per game	10.6	13.4
TURNOVERS	486	433
Turnovers per game	18.0	16.0
Turnover margin	-2.0	-
Assist/turnover ratio	0.6	0.8
STEALS	203	227
Steals per game	7.5	8.4
BLOCKS	91	133
Blocks per game	3.4	4.9
WINNING STREAK	0	-
Home win streak	0	-
ATTENDANCE	39487	47472
Home games-Avg/Game	16-2468	10-4675
Neutral site-Avg/Game	-	1-718

Score by Periods	1st	2nd	3rd	4th	OT	Totals
Kansas	309	351	384	393	9	1446
Opponents	438	427	470	463	2	1800

2015-16 GAME-BY-GAME STATS

Opponent	Date	Score		Total		3-Pointers		Free throws		Rebounds								pts	avg	
				fg-fga	pct	3fg-fga	pct	ft-fta	pct	off	def	tot	avg	pf	a	t/o	blk			stl
TEXAS SOUTHERN	11/15/15	72-65	W	30-73	.411	7-20	.350	5-10	.500	17	19	36	36.0	15	12	13	5	7	72	72.0
MEMPHIS	11/19/15	72-63	W	29-58	.500	6-14	.429	8-18	.444	14	29	43	39.5	19	14	19	1	8	72	72.0
at Arizona	11/23/15	52-67	L	19-59	.322	4-20	.200	10-13	.769	13	25	38	39.0	26	9	17	5	2	52	65.3
vs NIU	11/27/15	66-58	W	22-59	.373	9-20	.450	13-20	.650	13	28	41	39.5	19	17	17	7	9	66	65.5
at SMU	11/28/15	64-73	L	23-61	.377	4-20	.200	14-19	.737	20	21	41	39.8	31	11	25	6	9	64	65.2
CREIGHTON	12/02/15	67-54	W	26-57	.456	8-19	.421	7-8	.875	6	24	30	38.2	10	12	9	4	7	67	65.5
ST. JOHN'S	12/06/15	71-86	L	24-49	.490	8-19	.421	15-23	.652	8	17	25	36.3	13	14	18	3	7	71	66.3
UMKC	12/10/15	44-47	L	16-58	.276	6-22	.273	6-9	.667	12	27	39	36.6	23	8	10	2	5	44	63.5
NAVY	12/13/15	61-54	Wot	22-57	.386	4-21	.190	13-15	.867	11	31	42	37.2	12	10	16	4	9	61	63.2
WASHINGTON STATE	12/20/15	53-66	L	16-51	.314	6-25	.240	15-26	.577	12	23	35	37.0	14	8	15	4	8	53	62.2
ORAL ROBERTS	12/22/15	63-70	L	27-62	.435	3-15	.200	6-9	.667	10	31	41	37.4	19	9	12	3	5	63	62.3
at Oklahoma	12/30/15	44-67	L	18-57	.316	4-18	.222	4-6	.667	6	24	30	36.8	14	4	16	1	9	44	60.8
WEST VIRGINIA	01/03/16	45-65	L	17-44	.386	3-8	.375	8-14	.571	10	22	32	36.4	15	9	22	1	6	45	59.5
BAYLOR	01/06/16	40-58	L	13-41	.317	2-12	.167	12-20	.600	4	17	21	35.3	17	6	18	2	10	40	58.1
at Iowa State	01-09-16	49-65	L	18-52	.346	5-11	.455	8-11	.727	8	23	31	35.0	23	12	17	4	5	49	57.5
TEXAS	01/13/15	38-75	L	12-47	.255	8-25	.320	6-8	.750	5	21	26	34.4	22	8	21	5	4	38	56.3
at West Virginia	1-16-16	35-72	L	12-52	.231	3-13	.231	8-12	.667	13	21	34	34.4	20	4	25	7	7	35	55.1
KANSAS STATE	01/20/16	46-59	L	13-54	.241	9-30	.300	11-14	.786	10	20	30	34.2	14	11	13	1	8	46	54.6
OKLAHOMA STATE	01/24/16	46-74	L	17-54	.315	5-15	.333	7-8	.875	9	17	26	33.7	19	11	20	3	11	46	54.1
at Texas	1/27/16	46-70	L	16-47	.340	8-18	.444	6-11	.545	7	18	25	33.3	19	8	23	3	9	46	53.7
at Texas Tech	1-30-16	44-54	L	18-58	.310	3-16	.188	5-5	1.000	13	24	37	33.5	25	10	20	4	7	44	53.2
IOWA STATE	02/02/16	53-63	L	21-54	.389	3-10	.300	8-11	.727	13	21	34	33.5	26	8	24	8	8	53	53.2
at Baylor	02/06/16	49-81	L	19-60	.317	10-29	.345	1-2	.500	9	15	24	33.1	23	13	23	1	7	49	53.0
at Kansas State	2/13/16	67-81	L	24-61	.393	13-32	.406	6-7	.857	10	16	26	32.8	20	19	20	1	16	67	53.6
TCU	02/17/16	44-70	L	16-58	.276	3-16	.188	9-14	.643	13	19	32	32.8	16	10	18	2	10	44	53.2
OKLAHOMA	02/20/16	66-72	L	25-56	.446	11-27	.407	5-6	.833	11	21	32	32.7	23	17	20	2	7	66	53.7
at Oklahoma State	02-24-16	49-71	L	19-52	.365	6-18	.333	5-8	.625	11	16	27	32.5	13	11	15	2	3	49	53.6
Kansas		1446		532-1491	.357	161-513	.314	221-327	.676	288	590	878	32.5	510	285	486	91	203	1446	53.6
Opponents		1800		665-1493	.445	136-391	.348	334-479	.697	305	716	1021	37.8	397	363	433	133	227	1800	66.7

JAYHAWK EXTRAS

Largest Lead	19 vs. Creighton (12/2/15)
Largest Deficit	.43 vs. Texas (1/13/16)
Largest Margin of Victory	9 vs. Memphis (11/19/15)
Largest Margin of Defeat	37 at West Virginia (1/16/16)
Smallest Margin of Victory	7 vs. Navy (12/13/15)
Smallest Margin of Defeat	3 vs. UMKC (12/10/15)
Largest Deficit Overcome In a Win	19 vs. Navy (12/13/15)
Largest Lead In a Loss	11 vs. Oklahoma (2/20/16)
Largest Halftime Lead	18 vs. Northern Illinois (11/27/15)
Largest Halftime Deficit	24 at Texas (1/27/16)
Smallest Halftime Lead	2 vs. UMKC (12/10/15)
Smallest Halftime Deficit	3 vs. Washington State (12/20/15)
Number of Times Leading at Half	7
Number of Times Trailing at Half	20
Most Points in First Quarter	23 vs. Memphis (11/19/15)
Most Points in Second Quarter	26 vs. Northern Illinois (11/27/15)
Most Points in Third Quarter	26 vs. Creighton (12/2/15)
Most Points in Fourth Quarter	24 vs. Texas Southern (11/15/15)
Fewest Points in First Quarter	2 vs. Kansas State (1/20/16)
Fewest Points in Second Quarter	5 at West Virginia (1/16/16)

Fewest Points in Third Quarter	8 vs. TCU (2/17/16)
Fewest Points in Fourth Quarter	8 at West Virginia (1/16/16)
Most Points Allowed in First Quarter	.28 vs. Texas (1/13/16)
Most Points Allowed in Second Quarter	24 at Kansas State (2/13/16)
Most Points Allowed in Third Quarter	.25 vs. Iowa State (2/2/16)
Most Points Allowed in Fourth Quarter	23 at Baylor (2/6/16)
Fewest Points Allowed in First Quarter	9 vs. UMKC (12/10/15)
Fewest Points Allowed in Second Quarter	5 vs. Iowa State (2/2/16)
Fewest Points Allowed in Third Quarter	11 at Navy (12/13/15)
Fewest Points Allowed in Fourth Quarter	7 vs. Navy (12/13/15)
Highest Shooting Percentage in First Quarter	58.3 vs. St. John's (12/6/15)
Highest Shooting Percentage in Second Quarter	60.0 vs. Memphis (11/19/15)
Highest Shooting Percentage in Third Quarter	61.5 vs. St. John's (12/6/15)
Highest Shooting Percentage in Fourth Quarter	.636 vs. West Virginia (1/3/16)
Lowest Shooting Percentage in First Quarter	5.6 vs. UMKC (12/10/15)
Lowest Shooting Percentage in Second Quarter	18.2 at Texas (1/27/16)
Lowest Shooting Percentage in Third Quarter	15.0 vs. TCU (2/17/16)
Lowest Shooting Percentage in Fourth Quarter	26.7 vs. Oral Roberts (12/22/15)

2015-16 POINTS - REBOUNDS - ASSISTS

Opponent	Date	Score		01	03	04	12	13	15	20
				LOTT,CHELSE	ALDRIDGE,L	BROWN,JADA	O'NEAL,TIM	ENABULELE,	ROBERTSON,	CHRISTOPHE
TEXAS SOUTHERN	11/15/15	72-65	w	DNP	17-0-7	8-6-0	12-1-1	0-0-0	6-4-2	2-0-1
MEMPHIS	11/19/15	72-63	w	DNP	10-1-2	10-4-2	9-2-1	DNP	8-7-1	4-1-4
at Arizona	11/23/15	52-67	L	DNP	14-3-4	8-4-0	3-2-1	2-2-0	2-3-0	0-0-1
vs NIU	11/27/15	66-58	w	DNP	17-2-2	8-4-1	0-3-1	DNP	6-3-0	2-0-6
at SMU	11/28/15	64-73	L	2-1-0	8-3-2	0-5-0	3-2-0	DNP	7-6-5	1-0-1
CREIGHTON	12/02/15	67-54	w	DNP	18-1-3	0-3-1	8-1-0	DNP	3-3-0	2-2-4
ST. JOHN'S	12/06/15	71-86	L	DNP	13-0-2	0-0-1	9-0-1	DNP	7-5-2	9-1-3
UMKC	12/10/15	44-47	L	0-3-0	10-1-2	4-7-0	6-3-1	DNP	0-1-0	3-0-3
NAVY	12/13/15	61-54	w	DNP	19-3-1	7-8-0	0-0-1	DNP	1-7-2	4-2-2
WASHINGTON STATE	12/20/15	53-66	L	DNP	13-1-0	8-5-1	5-0-2	DNP	2-4-1	3-3-2
ORAL ROBERTS	12/22/15	63-70	L	DNP	4-2-1	8-4-0	5-2-2	DNP	6-2-0	8-2-4
at Oklahoma	12/30/15	44-67	L	DNP	0-2-0	0-0-0	6-3-2	0-0-0	0-0-0	6-2-0
WEST VIRGINIA	01/03/16	45-65	L	DNP	16-4-0	2-0-2	0-3-0	DNP	3-3-2	2-0-0
BAYLOR	01/06/16	40-58	L	DNP	0-1-2	0-1-1	4-1-0	DNP	6-4-1	2-2-0
at Iowa State	01-09-16	49-65	L	DNP	12-2-1	7-2-1	0-0-0	DNP	4-6-0	0-3-2
TEXAS	01/13/15	38-75	L	0-1-0	12-1-2	3-2-0	6-0-1	0-0-1	0-3-1	0-1-1
at West Virginia	1-16-16	35-72	L	DNP	10-2-1	0-1-0	3-1-1	DNP	0-5-0	2-0-0
KANSAS STATE	01/20/16	46-59	L	DNP	5-2-3	7-1-0	9-3-1	DNP	3-2-1	0-2-1
OKLAHOMA STATE	01/24/16	46-74	L	DNP	8-3-3	2-1-0	0-0-2	DNP	5-0-0	4-0-4
at Texas	1/27/16	46-70	L	2-1-0	15-1-2	0-2-0	4-2-0	DNP	1-5-3	0-1-1
at Texas Tech	1-30-16	44-54	L	DNP	3-3-5	3-9-0	0-1-0	DNP	4-3-2	0-1-1
IOWA STATE	02/02/16	53-63	L	DNP	4-2-2	14-4-0	6-1-0	DNP	2-3-0	4-1-2
at Baylor	02/06/16	49-81	L	0-0-0	12-0-2	2-5-2	4-0-1	DNP	10-5-2	0-0-3
at Kansas State	2/13/16	67-81	L	DNP	3-1-2	8-4-0	18-3-0	DNP	6-2-3	0-1-4
TCU	02/17/16	44-70	L	0-1-0	7-2-2	4-4-1	3-0-1	DNP	11-2-2	0-0-2
OKLAHOMA	02/20/16	66-72	L	DNP	20-2-7	6-5-2	15-4-3	DNP	6-4-0	0-1-0
at Oklahoma State	02-24-16	49-71	L	0-1-0	13-3-3	2-4-0	6-3-0	DNP	7-4-1	0-1-1

Opponent	Date	Score		22	25	33	55
				CHEADLE,CH	MANNINGALL	KOPATICH,K	JOHNSON,TY
TEXAS SOUTHERN	11/15/15	72-65	w	0-1-0	12-7-0	9-8-1	6-5-0
MEMPHIS	11/19/15	72-63	w	6-1-0	5-7-1	14-6-2	6-10-1
at Arizona	11/23/15	52-67	L	4-2-1	11-8-0	6-5-2	2-3-0
vs NIU	11/27/15	66-58	w	3-2-2	12-11-1	10-2-4	8-3-0
at SMU	11/28/15	64-73	L	17-7-2	14-4-0	10-6-1	2-3-0
CREIGHTON	12/02/15	67-54	w	5-0-2	8-7-1	15-7-1	8-4-0
ST. JOHN'S	12/06/15	71-86	L	6-3-2	15-5-0	10-7-3	2-2-0
UMKC	12/10/15	44-47	L	0-2-1	1-5-0	14-5-0	6-6-1
NAVY	12/13/15	61-54	w	2-1-1	10-11-0	14-5-3	4-1-0
WASHINGTON STATE	12/20/15	53-66	L	0-1-2	10-7-0	11-3-0	1-2-0
ORAL ROBERTS	12/22/15	63-70	L	2-4-0	12-6-0	14-11-2	4-3-0
at Oklahoma	12/30/15	44-67	L	9-5-0	5-5-1	10-5-1	8-4-0
WEST VIRGINIA	01/03/16	45-65	L	6-7-2	7-4-2	7-2-1	2-3-0
BAYLOR	01/06/16	40-58	L	12-6-1	9-3-0	7-1-1	0-2-0
at Iowa State	01-09-16	49-65	L	8-3-1	8-6-1	6-7-3	4-1-3
TEXAS	01/13/15	38-75	L	0-6-2	5-3-0	10-3-0	2-2-0
at West Virginia	1-16-16	35-72	L	3-3-0	6-8-0	9-7-1	2-2-1
KANSAS STATE	01/20/16	46-59	L	8-3-3	0-3-0	6-7-1	8-4-1
OKLAHOMA STATE	01/24/16	46-74	L	2-9-2	2-1-0	14-3-0	9-4-0
at Texas	1/27/16	46-70	L	0-0-1	14-6-0	8-1-1	2-3-0
at Texas Tech	1-30-16	44-54	L	11-5-1	8-4-0	3-4-1	12-3-0
IOWA STATE	02/02/16	53-63	L	7-4-2	6-3-0	8-3-1	2-3-1
at Baylor	02/06/16	49-81	L	3-2-1	2-3-0	14-2-2	2-4-0
at Kansas State	2/13/16	67-81	L	7-4-3	4-2-5	11-2-2	10-4-0
TCU	02/17/16	44-70	L	5-5-1	6-7-0	8-0-0	0-5-1
OKLAHOMA	02/20/16	66-72	L	7-1-3	4-2-0	6-5-1	2-6-1
at Oklahoma State	02-24-16	49-71	L	5-2-1	0-3-0	5-4-5	11-1-0

2015-16 TEAM COMPARISON

Opponent	1st	2nd	Score	Mar	Total FG	FG Pct	3-Pointers	3FG Pct	Free Throws	FT Pct	Rebounds	Assist	T/Over	Block	Steal	Fouls
TEXAS SOUTHERN	33/23	39/42	72-65	+7	30-73/26-51	.411/.510	7-20/4-9	.350/.444	5-10/9-13	.500/.692	36/37 (1)	12/13	13/23	5/8	7/7	15/15
MEMPHIS	38/37	34/26	72-63	+9	29-58/23-58	.500/.397	6-14/4-15	.429/.267	8-18/13-16	.444/.813	43/29 +14	14/12	19/12	1/3	8/16	19/18
Arizona	28/31	24/36	52-67	(15)	19-59/23-56	.322/.411	4-20/7-12	.200/.583	10-13/14-26	.769/.538	38/45 (7)	9/9	17/14	5/5	2/5	26/22
NIU	39/21	27/37	66-58	+8	22-59/22-58	.373/.379	9-20/3-16	.450/.188	13-20/11-15	.650/.733	41/36 +5	17/11	17/18	7/9	9/8	19/22
SMU	24/43	40/30	64-73	(9)	23-61/19-52	.377/.365	4-20/5-24	.200/.208	14-19/30-35	.737/.857	41/32 +9	11/13	25/19	6/7	9/9	31/17
CREIGHTON	30/27	37/27	67-54	+13	26-57/19-55	.456/.345	8-19/11-23	.421/.478	7-8/5-6	.875/.833	30/38 (8)	12/12	9/18	4/3	7/3	10/13
ST. JOHN'S	31/46	40/40	71-86	(15)	24-49/37-65	.490/.569	8-19/3-7	.421/.429	15-23/9-10	.652/.900	25/31 (6)	14/14	18/13	3/4	7/12	13/15
UMKC	17/15	27/32	44-47	(3)	16-58/18-51	.276/.353	6-22/2-12	.273/.167	6-9/9-15	.667/.600	39/40 (1)	8/9	10/9	2/1	5/2	23/16
NAVY	22/34	30/18	61-54	+7	22-57/19-63	.386/.302	4-21/9-25	.190/.360	13-15/7-9	.867/.778	42/40 +2	10/8	16/16	4/2	9/8	12/19
WASHINGTON STATE	27/30	26/36	53-66	(13)	16-51/24-53	.314/.453	6-25/9-16	.240/.563	15-26/9-15	.577/.600	35/38 (3)	8/15	15/15	4/5	8/7	14/22
ORAL ROBERTS	41/33	22/37	63-70	(7)	27-62/26-58	.435/.448	3-15/10-26	.200/.385	6-9/8-22	.667/.364	41/35 +6	9/13	12/9	3/2	5/9	19/15
Oklahoma	21/31	23/36	44-67	(23)	18-57/27-63	.316/.429	4-18/6-18	.222/.333	4-6/7-10	.667/.700	30/46 (16)	4/15	16/17	1/4	9/9	14/11
WEST VIRGINIA	17/36	28/29	45-65	(20)	17-44/25-53	.386/.472	3-8/9-20	.375/.450	8-14/6-13	.571/.462	32/28 +4	9/13	22/14	1/8	6/14	15/12
BAYLOR	22/30	18/28	40-58	(18)	13-41/25-51	.317/.490	2-12/2-6	.167/.333	12-20/6-12	.600/.500	21/39 (18)	6/13	18/20	2/3	10/6	17/18
Iowa State	25/28	24/37	49-65	(16)	18-52/24-55	.346/.436	5-11/6-14	.455/.429	8-11/11-19	.727/.579	31/40 (9)	12/13	17/16	4/9	5/7	23/12
TEXAS	19/38	19/37	38-75	(37)	12-47/25-59	.255/.424	8-25/2-9	.320/.222	6-8/23-27	.750/.852	26/46 (20)	8/15	21/11	5/5	4/13	22/15
West Virginia	14/32	21/40	35-72	(37)	12-52/28-62	.231/.452	3-13/2-17	.231/.118	8-12/14-25	.667/.560	34/46 (12)	4/14	25/14	7/10	7/9	20/13
KANSAS STATE	13/27	33/32	46-59	(13)	13-54/22-47	.241/.468	9-30/4-15	.300/.267	11-14/11-14	.786/.786	30/38 (8)	11/8	13/16	1/8	8/4	14/11
OKLAHOMA STATE	21/34	25/40	46-74	(28)	17-54/30-58	.315/.517	5-15/3-10	.333/.300	7-8/11-17	.875/.647	26/42 (16)	11/23	20/15	3/4	11/7	19/14
Texas	15/39	31/31	46-70	(24)	16-47/25-58	.340/.431	8-18/6-15	.444/.400	6-11/14-20	.545/.700	25/41 (16)	8/14	23/18	3/6	9/7	19/16
Texas Tech	19/27	25/27	44-54	(10)	18-58/17-44	.310/.386	3-16/3-11	.188/.273	5-5/17-20	1000/.850	37/32 +5	10/7	20/20	4/5	7/4	25/11
IOWA STATE	28/18	25/45	53-63	(10)	21-54/21-53	.389/.396	3-10/2-13	.300/.154	8-11/19-25	.727/.760	34/34 -	8/14	24/17	8/3	8/8	26/11
Baylor	18/36	31/45	49-81	(32)	19-60/31-56	.317/.554	10-29/4-7	.345/.571	1-2/15-23	.500/.652	24/48 (24)	13/22	23/22	1/5	7/12	23/10
Kansas State	29/42	38/39	67-81	(14)	24-61/26-52	.393/.500	13-32/8-18	.406/.444	6-7/21-27	.857/.778	26/39 (13)	19/17	20/22	1/4	16/13	20/10
TCU	23/35	21/35	44-70	(26)	16-58/25-54	.276/.463	3-16/6-16	.188/.375	9-14/14-16	.643/.875	32/42 (10)	10/12	18/19	2/4	10/10	16/22
OKLAHOMA	28/35	38/37	66-72	(6)	25-56/27-51	.446/.529	11-27/2-6	.407/.333	5-6/16-22	.833/.727	32/26 +6	17/10	20/15	2/3	7/12	23/9
Oklahoma State	18/37	31/34	49-71	(22)	19-52/31-57	.365/.544	6-18/4-11	.333/.364	5-8/5-7	.625/.714	27/33 (6)	11/24	15/11	2/3	3/6	13/8

Note: Game totals are displayed in the format TEAM/OPPONENT for each category

2015-16 SPECIALTY STATS

Opponent	T/O	2ndCh	Paint	FastB	Bench	Ties	Leads	Leads overcome	W-L	Score
Texas Southern	12	8	36	9	28	3	4	2 4th 8:04	W	72-65
Memphis	12	13	46	8	25	0	0	--	W	72-63
at Arizona	12	9	24	0	11	4	4		L	67-52
vs. NIU	11	9	20	6	19	1	1	2 1st 7:08	W	66-58
at SMU	19	17	38	2	25	1	0		L	76-64
Creighton	14	9	34	4	18	1	1	12 2nd 8:06	W	67-54
St. John's	10	5	30	9	20	0	2		L	71-86
UMKC	10	2	20	0	19	3	3		L	44-47
Navy	6	10	32	2	13	1	1	19 2nd 4:18	W	61-54 (OT)
Washington State	11	8	20	0	9	1	1		L	53-66
Oral Roberts	8	6	48	4	17	1	5		L	63-70
at Oklahoma	10	2	22	2	23	0	0		L	44-67
West Virginia	12	7	26	0	7	0	0		L	45-65
Baylor	11	4	10	4	6	1	1		L	40-58
at Iowa State	10	9	20	0	11	0	1		L	49-65
Texas	9	0	8	0	15	0	0		L	38-75
at West Virginia	2	9	16	2	8	0	2		L	35-72
Kansas State	15	8	6	0	18	0	0		L	46-59
Oklahoma State	8	10	18	6	13	0	0		L	46-74
at Texas	10	4	2	0	9	0	0		L	46-70
at Texas Tech	10	4	24	4	15	0	0		L	44-54
Iowa State	15	11	22	6	26	4	2		L	53-63
at Baylor	10	6	12	2	8	0	0		L	49-81
at Kansas State	10	11	22	2	36	1	0		L	67-81
TCU	14	3	22	6	7	0	0		L	44-70
Oklahoma	11	16	24	8	23	1	1		L	66-72
at Oklahoma State	2	3	20	2	19	0	0		L	49-71
Totals	274	203	622	88	448	23	29			
average/game	10.1	7.5	23.0	3.3	16.6	0.9	1.1			
Opponent	475	272	846	204	511	34	37			
average/game	17.6	10.1	31.3	7.6	18.9	1.3	1.4			

KANSAS' RECORD WHEN...

OVERALL	15-16	UNDER BRANDON
Outrebound opponent	3-5	3-5
Get outrebounded	2-16	2-16
Rebound tie	0-1	0-1
Shoot > from the field	3-1	3-1
Shoot < from the field	2-21	2-21
Commit fewer turnovers	3-6	3-6
Commit more turnovers	1-14	1-14
Turnovers tie	1-2	1-2
KU shoots > 50% from field	1-0	1-0
KU shoots < 50% from field	4-22	4-22
Opp. shoots > 50% from field	2-6	2-6
Opp. shoots < 50% from field	3-16	3-16

SCORING	15-16	UNDER BRANDON
Scoring 49 points or less	0-14	0-14
Scoring 50-59 points	0-3	0-3
Scoring 60-69 points	3-4	3-4
Scoring 70-79 points	2-1	2-1
Scoring 80+ points	0-0	0-0
Allowing 49 points or less	0-1	0-1
Allowing 50-59 points	3-3	3-3
Allowing 60-69 points	2-5	2-5
Allowing 70-79 points	0-10	0-10
Allowing 80+ points	0-3	0-3
Final margin is between 1-5	0-1	0-1
Final margin is between 6-10	4-5	4-5
Final margin is 11+	1-16	1-16

ON MONTH/DAYS	15-16	UNDER BRANDON
Playing in November	3-2	3-2
Playing in December	2-5	2-5
Playing in January	0-9	0-9
Playing in February	0-5	0-5
Playing in March	0-0	0-0
Playing in April	0-0	0-0
Playing on Monday	0-1	0-1
Playing on Tuesday	0-2	0-2
Playing on Wednesday	1-7	1-7
Playing on Thursday	1-1	1-1
Playing on Friday	1-0	1-0
Playing on Saturday	0-7	0-7
Playing on Sunday	2-4	2-4

ON TELEVISION	15-16	UNDER BRANDON
Playing on ESPN3	4-12	4-12
Playing on FS1	0-1	0-1
Playing on TWCS	4-11	4-11
Playing on FSSW+	0-3	0-3
Playing on Root Sports	0-1	0-1
Playing on Longhorn Network	0-1	0-1

MISCELLANEOUS	15-16	UNDER BRANDON
Playing a Top 25 Team	0-7	0-7
Playing a Top 10 Team	0-4	0-4
Leading at halftime	4-3	4-3
Trailing at halftime	1-19	1-19
Tied at halftime	0-0	0-0
In overtime games	1-0	1-0

2015-16 HIGHS - LOWS

KANSAS TEAM - HIGHS

POINTS	72	MEMPHIS (11/19/15)
	72	TEXAS SOUTHERN (11/15/15)
	71	ST. JOHN'S (12/06/15)
	67	at Kansas State (2/13/16)
	67	CREIGHTON (12/02/15)
FIELD GOALS MADE	30	TEXAS SOUTHERN (11/15/15)
	29	MEMPHIS (11/19/15)
FIELD GOAL ATTEMPTS	73	TEXAS SOUTHERN (11/15/15)
	62	ORAL ROBERTS (12/22/15)
FIELD GOAL PERCENTAGE	.500 (29-58)	MEMPHIS (11/19/15)
	.490 (24-49)	ST. JOHN'S (12/06/15)
3 PT FIELD GOALS MADE	13	at Kansas State (2/13/16)
	11	OKLAHOMA (02/20/16)
3 PT FG ATTEMPTS	32	at Kansas State (2/13/16)
	30	KANSAS STATE (01/20/16)
3 PT FG PERCENTAGE	.455 (5-11)	at Iowa State (01-09-16)
	.450 (9-20)	vs NIU (11/27/15)
FREE THROWS MADE	15	WASHINGTON STATE (12/20/15)
	15	ST. JOHN'S (12/06/15)
FREE THROW ATTEMPTS	26	WASHINGTON STATE (12/20/15)
	23	ST. JOHN'S (12/06/15)
FREE THROW PERCENTAGE	1.000 (5-5)	at Texas Tech (1-30-16)
	.875 (7-8)	OKLAHOMA STATE (01/24/16)
	.875 (7-8)	CREIGHTON (12/02/15)
REBOUNDS	43	MEMPHIS (11/19/15)
	42	NAVY (12/13/15)
ASSISTS	19	at Kansas State (2/13/16)
	17	OKLAHOMA (02/20/16)
	17	vs NIU (11/27/15)
STEALS	16	at Kansas State (2/13/16)
	11	OKLAHOMA STATE (01/24/16)
BLOCKED SHOTS	8	IOWA STATE (02/02/16)
	7	at West Virginia (1-16-16)
	7	vs NIU (11/27/15)
TURNOVERS	25	at West Virginia (1-16-16)
	25	at SMU (11/28/15)
FOULS	31	at SMU (11/28/15)

OPPONENT TEAM - HIGHS

POINTS	86	ST. JOHN'S (12/06/15)
	81	at Kansas State (2/13/16)
	81	at Baylor (02/06/16)
	75	TEXAS (01/13/15)
	74	OKLAHOMA STATE (01/24/16)
FIELD GOALS MADE	37	ST. JOHN'S (12/06/15)
	31	at Oklahoma State (02-24-16)
	31	at Baylor (02/06/16)
FIELD GOAL ATTEMPTS	65	ST. JOHN'S (12/06/15)
	63	at Oklahoma (12/30/15)
	63	NAVY (12/13/15)
FIELD GOAL PERCENTAGE	.569 (37-65)	ST. JOHN'S (12/06/15)
	.554 (31-56)	at Baylor (02/06/16)
3 PT FIELD GOALS MADE	11	CREIGHTON (12/02/15)
	10	ORAL ROBERTS (12/22/15)
3 PT FG ATTEMPTS	26	ORAL ROBERTS (12/22/15)
	25	NAVY (12/13/15)
3 PT FG PERCENTAGE	.583 (7-12)	at Arizona (11/23/15)
	.571 (4-7)	at Baylor (02/06/16)
FREE THROWS MADE	30	at SMU (11/28/15)
	23	TEXAS (01/13/15)
FREE THROW ATTEMPTS	35	at SMU (11/28/15)
	27	at Kansas State (2/13/16)
	27	TEXAS (01/13/15)
FREE THROW PERCENTAGE	.900 (9-10)	ST. JOHN'S (12/06/15)
	.875 (14-16)	TCU (02/17/16)
REBOUNDS	48	at Baylor (02/06/16)
	46	at West Virginia (1-16-16)
	46	TEXAS (01/13/15)
	46	at Oklahoma (12/30/15)
ASSISTS	24	at Oklahoma State (02-24-16)
	23	OKLAHOMA STATE (01/24/16)
STEALS	16	MEMPHIS (11/19/15)
	14	WEST VIRGINIA (01/03/16)
BLOCKED SHOTS	10	at West Virginia (1-16-16)
	9	at Iowa State (01-09-16)
	9	vs NIU (11/27/15)

KANSAS TEAM - LOWS

POINTS	35	at West Virginia (1-16-16)
	38	TEXAS (01/13/15)
	40	BAYLOR (01/06/16)
	44	UMKC (12/10/15)
	44	at Oklahoma (12/30/15)
	44	at Texas Tech (1-30-16)
	44	TCU (02/17/16)
FIELD GOALS MADE	12	TEXAS (01/13/15)
	12	at West Virginia (1-16-16)
FIELD GOAL ATTEMPTS	41	BAYLOR (01/06/16)
	44	WEST VIRGINIA (01/03/16)
FIELD GOAL PERCENTAGE	.231 (12-52)	at West Virginia (1-16-16)
	.241 (13-54)	KANSAS STATE (01/20/16)
3 PT FIELD GOALS MADE	2	BAYLOR (01/06/16)
	3	ORAL ROBERTS (12/22/15)
	3	WEST VIRGINIA (01/03/16)
	3	at West Virginia (1-16-16)
	3	at Texas Tech (1-30-16)
	3	IOWA STATE (02/02/16)
	3	TCU (02/17/16)
3 PT FG ATTEMPTS	8	WEST VIRGINIA (01/03/16)
	10	IOWA STATE (02/02/16)
3 PT FG PERCENTAGE	.167 (2-12)	BAYLOR (01/06/16)
	.188 (3-16)	at Texas Tech (1-30-16)
	.188 (3-16)	TCU (02/17/16)
FREE THROWS MADE	1	at Baylor (02/06/16)
	4	at Oklahoma (12/30/15)
FREE THROW ATTEMPTS	2	at Baylor (02/06/16)
	5	at Texas Tech (1-30-16)
FREE THROW PERCENTAGE	.444 (8-18)	MEMPHIS (11/19/15)
	.500 (1-2)	at Baylor (02/06/16)
	.500 (5-10)	TEXAS SOUTHERN (11/15/15)
REBOUNDS	21	BAYLOR (01/06/16)
	24	at Baylor (02/06/16)
ASSISTS	4	at Oklahoma (12/30/15)
	4	at West Virginia (1-16-16)
STEALS	2	at Arizona (11/23/15)
	3	at Oklahoma State (02-24-16)

OPPONENT TEAM - LOWS

POINTS	47	UMKC (12/10/15)
	54	CREIGHTON (12/02/15)
	54	NAVY (12/13/15)
	54	at Texas Tech (1-30-16)
	58	vs NIU (11/27/15)
	58	BAYLOR (01/06/16)
FIELD GOALS MADE	17	at Texas Tech (1-30-16)
	18	UMKC (12/10/15)
FIELD GOAL ATTEMPTS	44	at Texas Tech (1-30-16)
	47	KANSAS STATE (01/20/16)
FIELD GOAL PERCENTAGE	.302 (19-63)	NAVY (12/13/15)
	.345 (19-55)	CREIGHTON (12/02/15)
3 PT FIELD GOALS MADE	2	UMKC (12/10/15)
	2	BAYLOR (01/06/16)
	2	TEXAS (01/13/15)
	2	at West Virginia (1-16-16)
	2	IOWA STATE (02/02/16)
	2	OKLAHOMA (02/20/16)
3 PT FG ATTEMPTS	6	BAYLOR (01/06/16)
	6	OKLAHOMA (02/20/16)
3 PT FG PERCENTAGE	.118 (2-17)	at West Virginia (1-16-16)
	.154 (2-13)	IOWA STATE (02/02/16)
FREE THROWS MADE	5	CREIGHTON (12/02/15)
	5	at Oklahoma State (02-24-16)
FREE THROW ATTEMPTS	6	CREIGHTON (12/02/15)
	7	at Oklahoma State (02-24-16)
FREE THROW PERCENTAGE	.364 (8-22)	ORAL ROBERTS (12/22/15)
	.462 (6-13)	WEST VIRGINIA (01/03/16)
REBOUNDS	26	OKLAHOMA (02/20/16)
	28	WEST VIRGINIA (01/03/16)
ASSISTS	7	at Texas Tech (1-30-16)
	8	NAVY (12/13/15)
	8	KANSAS STATE (01/20/16)
STEALS	2	UMKC (12/10/15)
	3	CREIGHTON (12/02/15)
BLOCKED SHOTS	1	UMKC (12/10/15)
	2	NAVY (12/13/15)
	2	ORAL ROBERTS (12/22/15)

2015-16 HIGHS - LOWS

KANSAS INDIVIDUAL - HIGHS

Points	20	Aldridge, Lauren vs Oklahoma (02/20/16)
	19	Aldridge, Lauren vs NAVY (12/13/15)
	18	O'Neal, Timeka at Kansas State (2/13/16)
	18	Aldridge, Lauren vs Creighton (12/02/15)
	17	Cheadle, Chayla at SMU (11/28/15)
	17	Aldridge, Lauren vs NIU (11/27/15)
	17	Aldridge, Lauren vs Texas Southern (11/15/15)
Field Goals Made	8	Aldridge, Lauren vs Oklahoma (02/20/16)
	7	Aldridge, Lauren vs Creighton (12/02/15)
	7	Cheadle, Chayla at SMU (11/28/15)
Field Goal Att.	17	Robertson, Aisia vs TCU (02/17/16)
	16	Kopatich, Kylee vs NAVY (12/13/15)
FG Pct (min 5 made)	.857 (6-7)	Brown, Jada vs Iowa State (02/02/16)
	.833 (5-6)	ManningAllen, Caelynn at Arizona (11/23/15)
3-Point FG Made	6	O'Neal, Timeka at Kansas State (2/13/16)
	5	O'Neal, Timeka vs Oklahoma (02/20/16)
	5	Aldridge, Lauren at Texas (1/27/16)
	5	Aldridge, Lauren vs NIU (11/27/15)
3-Point FG Att.	12	O'Neal, Timeka at Kansas State (2/13/16)
	11	Aldridge, Lauren vs Washington State (12/20/15)
3-Pt FG Pct (min 2 made)	1.000 (3-3)	Kopatich, Kylee vs Creighton (12/02/15)
	1.000 (2-2)	O'Neal, Timeka vs St. John's (12/06/15)
Free Throws Made	7	Cheadle, Chayla vs Baylor (01/06/16)
	7	Kopatich, Kylee vs Washington State (12/20/15)
Free Throw Att.	10	Kopatich, Kylee vs Washington State (12/20/15)
	9	ManningAllen, Caelynn vs St. John's (12/06/15)
FT Pct (min 3 made)	1.000 (4-4)	ManningAllen, Caelynn vs Oklahoma (02/20/16)
	1.000 (4-4)	Kopatich, Kylee vs Iowa State (02/02/16)
	1.000 (4-4)	ManningAllen, Caelynn at Texas Tech (1-30-16)
	1.000 (4-4)	Kopatich, Kylee vs Oklahoma State (01/24/16)
	1.000 (4-4)	Brown, Jada vs Kansas State (01/20/16)
	1.000 (4-4)	Aldridge, Lauren at Iowa State (01-09-16)
	1.000 (4-4)	Aldridge, Lauren vs NAVY (12/13/15)
	1.000 (4-4)	Kopatich, Kylee vs UMKC (12/10/15)
	1.000 (4-4)	Aldridge, Lauren vs St. John's (12/06/15)
	1.000 (4-4)	Robertson, Aisia vs NIU (11/27/15)
	1.000 (4-4)	Aldridge, Lauren vs Texas Southern (11/15/15)
	1.000 (3-3)	Brown, Jada at Kansas State (2/13/16)
	1.000 (3-3)	Kopatich, Kylee vs Oral Roberts (12/22/15)
	1.000 (3-3)	Cheadle, Chayla at SMU (11/28/15)
Rebounds	11	Kopatich, Kylee vs Oral Roberts (12/22/15)
	11	ManningAllen, Caelynn vs NAVY (12/13/15)
	11	ManningAllen, Caelynn vs NIU (11/27/15)
Assists	7	Aldridge, Lauren vs Oklahoma (02/20/16)
	7	Aldridge, Lauren vs Texas Southern (11/15/15)
Steals	4	Kopatich, Kylee vs Creighton (12/02/15)
	4	Brown, Jada vs NIU (11/27/15)
Blocked Shots	4	ManningAllen, Caelynn vs NIU (11/27/15)
	4	ManningAllen, Caelynn at Arizona (11/23/15)
Turnovers	6	ManningAllen, Caelynn at Texas Tech (1-30-16)
	6	Aldridge, Lauren at Texas (1/27/16)
Fouls	5	Aldridge, Lauren at Kansas State (2/13/16)
	5	Cheadle, Chayla at Texas (1/27/16)

OPPONENT INDIVIDUAL- HIGHS

Points	33	HANDFORD, Aliyyah vs St. John's (12/06/15)
	26	GRANT, Danaejah vs St. John's (12/06/15)
	25	Kaylan Mayberry vs Oral Roberts (12/22/15)
	25	Parker, Jazzmin vs Texas Southern (11/15/15)
	24	Martin, Brittney at Oklahoma State (02-24-16)
	24	Lewis, Breanna at Kansas State (2/13/16)
	24	Martin, Brittney vs Oklahoma State (01/24/16)
	24	Dunham, Taylor vs NAVY (12/13/15)
	24	ADAMS, McKenzie at SMU (11/28/15)
Field Goals Made	16	HANDFORD, Aliyyah vs St. John's (12/06/15)
	12	Martin, Brittney at Oklahoma State (02-24-16)
Field Goal Att.	25	HANDFORD, Aliyyah vs St. John's (12/06/15)
	21	Martin, Brittney vs Oklahoma State (01/24/16)
FG Pct (min 5 made)	.889 (8-9)	Pierre-Louis, Vionise vs Oklahoma (02/20/16)
	.833 (5-6)	Johnson, Niya vs Baylor (01/06/16)
3-Point FG Made	6	Dunham, Taylor vs NAVY (12/13/15)
	5	Kaylan Mayberry vs Oral Roberts (12/22/15)
3-Point FG Att.	13	Dunham, Taylor vs NAVY (12/13/15)
	10	Bria Pitts vs Oral Roberts (12/22/15)
	10	HEARN, Ariel vs Memphis (11/19/15)
3-Pt FG Pct (min 2 made)	1.000 (3-3)	Morton, Jessica vs West Virginia (01/03/16)
	1.000 (3-3)	Awa, Dawnyelle vs Washington State (12/20/15)
	1.000 (2-2)	Brown, Louise vs Washington State (12/20/15)
	1.000 (2-2)	MCGRORY, MC vs Creighton (12/02/15)
	1.000 (2-2)	OWENS, Jade vs Creighton (12/02/15)
Free Throws Made	11	Dean, Japreece at Texas Tech (1-30-16)
	6	Lewis, Breanna at Kansas State (2/13/16)
	6	Boyette, Imani at Texas (1/27/16)
	6	ADAMS, McKenzie at SMU (11/28/15)
	6	BOLTON, Morgan at SMU (11/28/15)
	6	FROLING, Alicia at SMU (11/28/15)
	6	HEARN, Ariel vs Memphis (11/19/15)
Free Throw Att.	12	Dean, Japreece at Texas Tech (1-30-16)
	10	Lewis, Breanna at Kansas State (2/13/16)
FT Pct (min 3 made)	1.000 (6-6)	Boyette, Imani at Texas (1/27/16)
	1.000 (6-6)	BOLTON, Morgan at SMU (11/28/15)
	1.000 (6-6)	ADAMS, McKenzie at SMU (11/28/15)
	1.000 (6-6)	FROLING, Alicia at SMU (11/28/15)
	1.000 (6-6)	HEARN, Ariel vs Memphis (11/19/15)
	1.000 (4-4)	Carter, Gioya vs Oklahoma (02/20/16)
	1.000 (4-4)	Pierre-Louis, Vionise vs Oklahoma (02/20/16)
	1.000 (4-4)	Hamilton, Veja vs TCU (02/17/16)
	1.000 (4-4)	Rodrigo, Celina vs Texas (01/13/15)
	1.000 (4-4)	Johnson, Seanna at Iowa State (01-09-16)
	1.000 (4-4)	GRANT, Danaejah vs St. John's (12/06/15)
	1.000 (4-4)	WALKER, Jade vs St. John's (12/06/15)
	1.000 (4-4)	Parker, Jazzmin vs Texas Southern (11/15/15)
	1.000 (3-3)	Deines, Megan at Kansas State (2/13/16)
	1.000 (3-3)	Roach, Bianca vs NAVY (12/13/15)
	1.000 (3-3)	AUGUSTA, Nateaia vs NIU (11/27/15)
	1.000 (3-3)	WASHINGTON, Malena at Arizona (11/23/15)
Rebounds	17	Martin, Brittney vs Oklahoma State (01/24/16)
	17	Montgomery, Lanay at West Virginia (1-16-16)

THE LAST TIME...

KANSAS INDIVIDUAL

Scored 40 points	Vickie Adkins (41) vs. Texas A&I, 12/15/84
Scored 30 points	Chelsea Gardner (30) vs. Alabama, 11/21/14
Scored 25 points	Chelsea Gardner (25) vs. Iowa State, 3/2/15
Made 15 field goals	Carolyn Davis (15) vs. Texas Tech, 1/25/12
Made 10 field goals	Chelsea Gardner (10) vs. Oklahoma, 2/28/15
Made 6 three-point field goals	Timeka O'Neal (6) at Kansas State, 2/13/16
Made 15 free throws	Carolyn Davis (15) at Wisconsin, 11/2/10
Attempted 25 field goals	Danielle McCray (25) vs. Colorado, 1/27/10
Attempted 10 three-point field goals	Timeka O'Neal (12) at Kansas State, 2/13/16
Attempted 15 free throws	Carolyn Davis (15) vs. Iowa State, 2/9/11
Had 20 rebounds	Chelsea Gardner (20) vs. West Virginia, 1/24/15
Had 15 rebounds	Chelsea Gardner (15) vs. Kansas State, 2/25/15
Had 10 rebounds	Kylee Kopatich (11) vs. Oral Roberts, 12/22/15
Posted a double-double	Kylee Kopatich (14p, 11r) vs. Oral Roberts, 12/22/15
Posted a triple-double	Angela Aycock (25p, 10a, 10s) vs. Missouri, 2/26/95
Had 10 assists	Lauren Aldridge (10) at TCU, 2/17/15
Had 5 steals	Lauren Aldridge (5) vs. West Virginia, 1/24/15
Had 5 blocked shots	Chelsea Gardner (5) vs. Iowa State, 3/2/15

KANSAS TEAM

Scored 100 points	105 vs. Texas Southern, 12/12/13
Scored 90 points	105 vs. Texas Southern, 12/12/13
Scored less than 50 points	44 vs. TCU, 2/17/16
Scored less than 40 points	46 vs. Oklahoma State, 1/24/16
Scored 50 points in a half	56 vs. Texas Southern, 12/12/13
Scored less than 20 points in a half	18 at Baylor, 2/6/16
Made 50 field goals	50 vs. UNC-Ashville, 2/28/94
Made 40 field goals	40 vs. Newman, 12/9/12
Made 30 field goals	33 vs. Kansas State, 3/7/14
Made 15 three-point field goals	Has never happened
Made 10 three-point field goals	13 at Kansas State, 2/13/16
Made 30 free throws	41 vs. Oral Roberts, 11/10/13
Made 20 free throws	22 at Creighton, 12/22/14
Had 60 rebounds	70 vs. Morgan State, 12/8/93
Had 50 rebounds	54 vs. Kansas State, 2/25/15
Had 40 rebounds	42 vs. Navy, 12/13/15
Had 30 assists	32 vs. Maine, 12/1/10
Had 20 assists	20 vs. Temple, 11/22/14
Committed less than 10 turnovers	9 vs. Creighton, 12/2/15
Committed 25 turnovers or more	25 at West Virginia, 1/16/16
Had 20 steals	30 vs. Mississippi Valley State, 12/21/00
Had 15 steals	16 vs. SIU-Edwardsville, 11/13/13
Had 10 blocked shots	11 vs. Kansas State, 2/25/15
Had 5 blocked shots	8 vs. Iowa State, 2/2/16
Two players scored 30 points each	Has never happened
Three players scored 20 points each	at Oklahoma, 2/19/95
	A. Halbieb (25), A. Aycock (24), C. Sampson (21)
Two players scored 20 points each	at TCU, 2/17/15
	N. Knight (29) and C. Gardner (20)
Six players scored in double-figures	vs. Sam Houston State, 12/28/11
	C. Davis (21), A. Goodrich (14), A. Sutherland (12), N. Knight (12), M. Engelman (11) and C. Gardner (10)
Five players scored in double-figures	vs. Texas Tech, 2/4/15
	C. Gardner (19), L. Aldridge (13), N. Knight (12), C. Cheadle (10), A. Boyd (10)
Four players scored in double-figures	vs. Samford, 12/29/14
	N. Knight (13), A. Boyd (13), L. Aldridge (10), C. Cheadle (10)

OPPONENT INDIVIDUAL

Scored 40 points	Danielle Adams (40) vs. Texas A&M, 2/12/11
Scored 30 points	Aliyyah Handford (33) vs. St. John's, 12/6/15
Scored 25 points	Kaylan Mayberry (25) vs. Oral Roberts, 12/22/15
Made 15 field goals	Aliyyah Handford (16) vs. St. John's, 12/6/15
Made 10 field goals	Danaejah Grant (10) vs. St. John's, 12/6/15
Made 6 three-point field goals	Taylor Dunham (6) vs. Navy, 12/13/15
Made 10 free throws	Nina Davis (10) vs. Baylor, 1/17/15
Attempted 25 field goals	Aliyyah Handford (25) vs. St. John's, 12/6/15
Attempted 10 three-point field goals	Taylor Dunham (13) vs. Navy, 12/13/15
Attempted 15 free throws	Nina Davis (16) vs. Baylor, 1/17/15
Had 20 rebounds	Tracy Ellis (22) vs. Missouri, 1/13/18
Had 15 rebounds	Imani Boyette (16) vs. Texas, 2/14/15
Had 10 rebounds	Beatrice Mompremier (12) at Baylor, 2/6/16
Posted a double-double	Breanna Lewis (24p, 10r) at Kansas State, 2/13/16
Posted a triple-double	Amanda Zahui B. (11p, 11r, 10b), vs. Minnesota, 11/20/13
Had 10 assists	Jadda Buckley (11) vs. Iowa State, 2/2/16
Had 5 steals	Brianna Taylor (5) vs. Texas, 1/13/16
Had 5 blocked shots	Breanna Lewis (8), at Kansas State, 1/11/15

OPPONENT TEAM

Scored 100 points	103 at Oklahoma, 2/19/95
Scored 90 points	93 vs. Notre Dame, 3/31/13
Scored less than 50 points	47 vs. UMKC, 12/10/15
Scored less than 40 points	39 vs. California, 12/7/14
Scored 50 points in a half	50 vs. Oklahoma, 2/9/14
Scored less than 20 points in a half	18 vs. Iowa State, 2/2/16
Made 50 field goals	Has never happened
Made 40 field goals	41 at Oklahoma, 2/19/95
Made 30 field goals	31 at Baylor, 2/6/16
Made 15 three-point field goals	Has never happened
Made 10 three-point field goals	10 vs. TCU, 3/5/13
Made 30 free throws	35 vs. Nebraska, 2/13/02
Made 20 free throws	21 at Kansas State, 2/13/16
Had 60 rebounds	64 vs. Wichita State, 12/6/82
Had 50 rebounds	50 vs. Texas, 2/14/15
Had 40 rebounds	42 vs. TCU, 2/17/16
Had 30 assists	Has never happened
Had 20 assists	22 at Baylor, 2/6/16
Committed less than 10 turnovers	9 vs. Oral Roberts, 12/22/15
Committed 25 turnovers or more	25 vs. Texas Southern, 12/12/13
Had 20 steals	21 at Wake Forest, 11/20/11
Had 15 steals	17 vs. Kansas State, 2/25/15
Had 10 blocked shots	10 at West Virginia, 1/16/16
Had 5 blocked shots	5 at Baylor, 2/6/16
Two players scored 30 points each	at Creighton, 12/22/89
	M. Sanford (30), K. Halligan (30)
Three players scored 20 points each	at Iowa State, 2/9/11
	K. Bolte (26), H. Christofferson (21) and C. Poppens (20)
Two players scored 20 points each	vs. St. John's, 12/6/15
	A. Handford (33) and D. Grant (26)
Six players scored in double-figures	at Baylor, 1/28/06
	S. Young (17), A. Tisdale (13), C. Scott (12), J. Player (12), J. Davis (11) and T. Abbott (10)
Five players scored in double-figures	at Creighton, 12/22/14
	M. Janning (23), B. Rollerson (16), S. Lamberty (15), M. McGrory (14) and A. Akin-Otiko (13)
Four players scored in double-figures	at Kansas State, 2/13/16
	B. Lewis (24), M. Deines (15), B. Craig (10) and K. Page (10)



1

CHELSEA LOTT
C • 6-3 • FR
FRESNO, TEXAS

SEASON HIGHS

Points 2, 2x, last at Texas (1/27/16)
Rebounds 3 vs. UMKC (12/10/15)
Assists --
Steals --
Blocks 1, 3x, last vs. Texas (1/13/16)
Minutes 8 at SMU (11/28/15)

CAREER HIGHS

Points 2, 2x, last at Texas (1/27/16)
Rebounds 3 vs. UMKC (12/10/15)
Assists --
Steals --
Blocks 1, 3x, last vs. Texas (1/13/16)
Minutes 8 at SMU (11/28/15)

- Helped lead Hightower to the 2015 district title under head coach Deborah Mize.
- Earned all-district and 6A all-region honors her senior season.
- Named to the all-academic team for 2015.
- Selected to the 2015 Greater Houston Area Girls Basketball Association's All-Star Team.

Year	GP-GS	Min/g	FG%	3FG%	FT%	Reb/g	Ast	Stl	TO	Blk	Pts/g
15-16	7-0	3.6	.167	.000	1.000	1.1	0	0	6	3	0.6
Career	7-0	3.6	.167	.000	1.000	1.1	0	0	6	3	0.6



2

MCKENZIE CALVERT
G • 5-9 • SO
SCHERTZ, TEXAS

SEASON HIGHS

Points --
Rebounds --
Assists --
Steals --
Blocks --
Minutes --

CAREER HIGHS

Points 21 vs. CSUN (12/9/14)
Rebounds 5 vs Oregon (1/3/15)
Assists 4 vs. CSUN (12/9/14)
Steals 3 vs. Utah (2/6/15)
Blocks 2, 2x, vs. Arizona (2/20/15)
Minutes 37 at UCLA (1/18/15)

- A transfer from USC, McKenzie Calvert will have to sit out the 2015-16 season due to NCAA transfer rules.
- A four-time all-state and all-region honoree at Byron P. Steele High School and a five-star recruit.
- Tabbed as the No. 16 prospect by ESPN HoopGurlz 100 her senior season.
- Earned two district MVP honors, two state all-tournament accolades and three *San Antonio Express News* All-Area Team selections.
- Participated in the 2012 U-17 U.S. National Team Trials and was called into the U-16 Team Trials in 2011.

Year	GP-GS	Min/g	FG%	3FG%	FT%	Reb/g	Ast	Stl	TO	Blk	Pts/g
14-15*	27-7	25.7	.341	.340	.673	2.1	29	26	58	9	10.2
Career	27-7	25.7	.341	.340	.673	2.1	29	26	58	9	10.2

* at USC



3

LAUREN ALDRIDGE
G • 5-7 • SO
MARSHFIELD, MISSOURI

SEASON HIGHS

Points 20 vs. Oklahoma (2/20/16)
Rebounds 4 vs. West Virginia (1/3/16)
Assists 7, 2x, last vs. Oklahoma (2/20/16)
Steals 3, 3x, last at Texas (1/27/16)
Blocks --
Minutes 44 vs. Navy (12/13/15)

CAREER HIGHS

Points 20 vs. Oklahoma (2/20/16)
Rebounds 4, 5x, last vs. West Virginia (1/3/15)
Assists 10 at TCU (2/17/15)
Steals 5 vs. West Virginia (1/24/15)
Blocks 1, 2x, last vs. Arkansas St. (12/14/14)
Minutes 44, 2x, last vs. Navy (12/13/15)

- A 2016 CoSIDA Academic All-District selection and Academic All-Big 12 First Team honoree.
- Named to the All-Big 12 Freshman Team and the Academic All-Big 12 Rookie Team in 2014-15.
- Phillips 66 Freshman of the Week for the week of Dec. 7, 2014.
- Totaled a team-high 1,119 minutes in her freshman campaign and led the team with 5.0 assists per game, good for third in the Big 12.
- A four-year letterwinner at Marshfield High School, helping the Bluejays win four-straight Central Ozark Conference Championships.

Year	GP-GS	Min/g	FG%	3FG%	FT%	Reb/g	Ast	Stl	TO	Blk	Pts/g
15-16	27-27	34.9	.367	.373	.825	1.8	63	26	60	0	10.5
14-15	32-32	35.0	.374	.347	.863	1.9	159	37	94	2	8.1
Career	59-59	34.9	.370	.362	.850	1.9	222	63	154	2	9.2



4

JADA BROWN
F • 6-0 • JR
LAS VEGAS, NEVADA

SEASON HIGHS

Points 14 vs. Iowa State (2/2/16)
Rebounds 9, 2x, last at Texas Tech (1/30/16)
Assists 2, 4x, last vs. Oklahoma (2/20/16)
Steals 4 vs. NIU (11/27/15)
Blocks 1, 7x, last at Oklahoma State (2/24/16)
Minutes 33 vs. Oral Roberts (12/22/15)

CAREER HIGHS

Points 14 vs. Iowa State (2/2/16)
Rebounds 9, 2x, last at Texas Tech (1/30/16)
Assists 2, 5x, last vs. Oklahoma (2/20/16)
Steals 4 vs. NIU (11/27/15)
Blocked Shots 2 vs. Kansas State (2/25/15)
Minutes Played 33 vs. Oral Roberts (12/22/15)

- A 2014-15 Academic All-Big 12 Second Team selection.
- Led Centennial High School to a 29-3 record and a trip to the Nevada Class 4A semifinals as a junior.
- A three-time first-team all-state selection (2011, 2012 and 2013) and tabbed the 2013 Gatorade State Player of the Year in Nevada.

Year	GP-GS	Min/g	FG%	3FG%	FT%	Reb/g	Ast	Stl	TO	Blk	Pts/g
15-16	27-8	20.5	.402	.188	.653	3.5	15	19	54	7	4.5
14-15	32-31	15.3	.403	.000	.700	2.9	8	9	37	5	2.1
13-14	30-13	11.6	.364	.000	.563	1.9	6	8	21	2	1.4
Career	89-52	15.6	.394	.176	.647	2.7	29	36	112	14	2.6



12
TIMEKA O'NEAL
 G • 5-4 • R-JR
 RAYTOWN, MISSOURI

SEASON HIGHS

Points 18 at Kansas State (2/13/16)
 Rebounds 4 vs. Oklahoma (2/20/16)
 Assists 3 vs. Oklahoma (2/20/16)
 Steals 2, 4x, last at Kansas State (2/13/16)
 Blocks --
 Minutes 28 vs. UMKC (12/10/15)

CAREER HIGHS

Points 18 at Kansas State (2/13/16)
 Rebounds 4 vs. Oklahoma (2/20/16)
 Assists 3 vs. Oklahoma (2/20/16)
 Steals 2, 4x, last at Kansas State (2/13/16)
 Blocks --
 Minutes 28 vs. UMKC (12/10/15)

- Played one game for Kansas before suffering a season-ending knee injury in 2014-15.
- Named National Junior College Athletics Association (NJCAA) Division II third-team All-American and Women's Basketball Coaches Association (WBCA) Honorable Mention All-American in 2013-14.
- Earned All-Region VI D-II and All-East Jayhawk Conference D-II first-team honors in 2013-14.
- Helped Johnson County Community College (JCCC) to a 30-2 record, a conference title and a No. 2 ranking in the final NJCAA D-II poll during her junior season.

Year	GP-GS	Min/g	FG%	3FG%	FT%	Reb/g	Asst	Stl	TO	Blk	Pts/g
15-16	27-5	18.1	.358	.406	.625	1.5	23	14	34	0	5.3
14-15 [^]	1-0	8.0	.250	.333	.000	0.0	0	0	1	0	3.0
Career	28-5	17.8	.355	.404	.625	1.5	23	14	35	0	5.3

[^] Played one game before suffering a season-ending injury.



13
LORRAINE ENABULELE
 F • 6-0 • SO
 AJAX, TORONTO, CANADA

SEASON HIGHS

Points 2 at Arizona (11/23/15)
 Rebounds 2 at Arizona (11/23/15)
 Assists 1 vs. Texas (1/13/16)
 Steals --
 Blocks --
 Minutes 4, 2x, last vs. Texas (1/13/16)

CAREER HIGHS

Points 2, 2x, last at Arizona (11/23/15)
 Rebounds 4 vs. Texas Southern (11/18/14)
 Assists 1, 2x, last vs. Texas (1/13/16)
 Steals --
 Blocks --
 Minutes 11 vs. Texas Southern (11/18/14)

- Lettered in basketball and volleyball at Notre Dame Secondary School.
- Helped the Cougars to a district title on the hardwood in 2013.
- Notre Dame Secondary School Athlete of the Year in 2011 and 2012.
- On the Greater Toronto Area (GTA) High School All-Star Team.

Year	GP-GS	Min/g	FG%	3FG%	FT%	Reb/g	Asst	Stl	TO	Blk	Pts/g
15-16	4-0	2.8	.500	.000	.000	0.5	1	0	1	0	0.5
14-15	13-0	3.6	.333	.000	.000	0.8	1	0	7	0	0.2
Career	17-0	3.4	.400	.000	.000	0.8	2	0	8	0	0.2



15
AISIA ROBERTSON
 G • 5-7 • FR
 SAN FRANCISCO, CALIFORNIA

SEASON HIGHS

Points 11 vs. TCU (2/17/16)
 Rebounds 7, 2x, last vs. Navy (12/13/15)
 Assists 5 at SMU (11/28/15)
 Steals 3, 3x, last vs. TCU (2/17/16)
 Blocks 2 vs. Oklahoma State (1/24/15)
 Minutes 27 at SMU (11/28/15)

CAREER HIGHS

Points 11 vs. TCU (2/17/16)
 Rebounds 7, 2x, last vs. Navy (12/13/15)
 Assists 5 at SMU (11/28/15)
 Steals 3, 3x, last vs. TCU (2/17/16)
 Blocks 2 vs. Oklahoma State (1/24/15)
 Minutes 27 at SMU (11/28/15)

- Helped Bishop O'Dowd High School to three-time East Bay Athletic League championships.
- Won a Division III state title, as well as an open division state title and two North Coast Section Championships.
- Named to the all-league second team twice in her career and earned a 2015 McDonald's All-American nomination.
- Ranked 18th for her position and No. 85 overall by ProspectNation, and 24th for her position and 84th overall by Collegiate Girls Basketball Report.

Year	GP-GS	Min/g	FG%	3FG%	FT%	Reb/g	Asst	Stl	TO	Blk	Pts/g
15-16	27-18	17.7	.274	.242	.643	3.6	31	34	69	8	4.3
Career	27-18	17.7	.274	.242	.643	3.6	31	34	69	8	4.3



20
JAYDE CHRISTOPHER
 G • 5-8 • FR
 FEDERAL WAY, WASHINGTON

SEASON HIGHS

Points 9 vs. St. John's (12/6/15)
 Rebounds 3, 2x, last at Iowa State (1/9/16)
 Assists 6 vs. NIU (11/27/15)
 Steals 2 at Oklahoma (12/30/15)
 Blocks 1 vs. Iowa State (2/2/16)
 Minutes 25, 2x, last vs. Oklahoma State (1/24/15)

CAREER HIGHS

Points 9 vs. St. John's (12/6/15)
 Rebounds 3, 2x, last at Iowa State (1/9/16)
 Assists 6 vs. NIU (11/27/15)
 Steals 2 at Oklahoma (12/30/15)
 Blocks 1 vs. Iowa State (2/2/16)
 Minutes 25, 2x, last vs. Oklahoma State (1/24/15)

- Two-time Washington state champion at Cleveland High School.
- Named to the Class 3A First Team by the Associated Press and earned All-Metro league honors in 2012 and 2013.
- Ranked 14th at her position and 59th overall by ProspectNation, while ESPN's Hoopguriz ranked her 22nd at her position and 67th overall.
- A 2015 McDonald's All-America nominee.

Year	GP-GS	Min/g	FG%	3FG%	FT%	Reb/g	Asst	Stl	TO	Blk	Pts/g
15-16	27-5	15.3	.306	.143	.522	1.0	53	12	38	1	2.1
Career	27-5	15.3	.306	.143	.522	1.0	53	12	38	1	2.1



21

SYDNEY BENOIT
G • 5-10 • JR
SMITH CENTER, KANSAS

SEASON HIGHS

Points	--
Rebounds	--
Assists	--
Steals	--
Blocks	--
Minutes	--

CAREER HIGHS

Points	--
Rebounds	--
Assists	--
Steals	--
Blocks	--
Minutes	--

- Played two seasons at Hutchinson Community College.
- Helped the Blue Dragons to conference and regional championships during the 2013-14 and 2014-15 seasons.
- Named Kansas Basketball Coaches Association First Team honors as a high school senior.
- A three-time all-conference first-team selection.
- Helped the Lady Red to state and district championships in 2013.

Year	GP-GS	Min/g	FG%	3FG%	FT%	Reb/g	Asst	Stl	TO	Blk	Pts/g
15-16	0-0	0.0	.000	.000	.000	0.0	0	0	0	0	0.0
Career	0-0	0.0	.000	.000	.000	0.0	0	0	0	0	0.0



22

CHAYLA CHEADLE
G • 6-0 • SO
COLUMBIA, MISSOURI

SEASON HIGHS

Points	17 at SMU (11/28/15)
Rebounds	9 vs. Oklahoma State (1/24/16)
Assists	3, 3x, last vs. Oklahoma (2/20/16)
Steals	3, 2x, last vs. TCU (2/17/16)
Blocks	1, 3x, last at Kansas State (2/13/16)
Minutes	30 vs. Baylor (1/6/16)

CAREER HIGHS

Points	19 vs. Arkansas State (12/14/14)
Rebounds	9, 2x, last vs. Oklahoma State (1/24/16)
Assists	3, 9x, last vs. Oklahoma (2/20/16)
Steals	3, 2x, last vs. TCU (2/17/16)
Blocks	3 vs. Kansas State (2/25/15)
Minutes	38 vs. Kansas State (2/25/15)

- Named to the Academic All-Big 12 Rookie Team in 2014-15.
- Led the Bruins to three-straight Class 5 Missouri State titles (2012-14) and three district championships.
- A two-time Missouri Basketball Coaches Association All-State selection and four-time all-district honoree.
- Ranked No. 97 overall in the 2014-15 recruiting class and the No. 23 guard by ESPN.

Year	GP-GS	Min/g	FG%	3FG%	FT%	Reb/g	Ast	Stl	TO	Blk	Pts/g
15-16	27-19	21.4	.310	.196	.600	3.3	37	26	45	3	5.1
14-15	32-29	25.1	.330	.325	.646	3.3	44	23	71	11	5.8
Career	59-48	23.4	.320	.276	.625	3.3	81	49	116	14	5.5



25

CAELYNN MANNING-ALLEN
F • 6-4 • JR
CHICAGO, ILLINOIS

SEASON HIGHS

Points	15 vs. St. John's (12/6/15)
Rebounds	11, 2x, last vs. Navy (12/13/15)
Assists	5 at Kansas State (2/13/16)
Steals	3, 2x, last at Kansas State (2/13/16)
Blocks	4, 2x, last vs. NIU (11/27/15)
Minutes	32 vs. Navy (12/13/15)

CAREER HIGHS

Points	15 vs. St. John's (12/6/15)
Rebounds	11, 2x, last vs. Navy (12/13/15)
Assists	5 at Kansas State (2/13/16)
Steals	3, 2x, last at Kansas State (2/13/16)
Blocks	4, 3x, last vs. NIU (11/27/15)
Minutes	32 vs. Navy (12/13/15)

- 2016 Academic All-Big 12 First Team selection, second year in a row earning the honor.
- 2015 SMU Thanksgiving Classic All-Tournament Team.
- Earned first-team all-city and first-team all-conference honors in 2012 and 2013, while being named the 2012 Chicago Public League Player of the Year.

Year	GP-GS	Min/g	FG%	3FG%	FT%	Reb/g	Ast	Stl	TO	Blk	Pts/g
15-16	27-24	22.4	.416	.000	.655	5.2	12	22	78	36	7.3
14-15	26-1	9.9	.481	.000	.563	2.5	2	8	21	28	2.3
13-14	25-1	8.8	.341	.000	.417	1.9	1	2	27	14	1.5
Career	78-26	13.9	.417	.000	.582	3.3	15	32	126	78	3.8



30

JESSICA WASHINGTON
G • 5-8 • JR
TULSA, OKLAHOMA

SEASON HIGHS

Points	--
Rebounds	--
Assists	--
Steals	--
Blocks	--
Minutes	--

CAREER HIGHS

Points	20 at Clemson (1/18/15)
Rebounds	6, 2x, vs. Appalachian St. (12/14/14)
Assists	6 vs. High Point (12/21/13)
Steals	3, 4x, vs. Louisville (3/6/15)
Blocks	1, 4x, vs. Louisville (3/6/15)
Minutes	30 vs E. Tennessee State (1/2/15)

- Played two seasons at North Carolina before transferring to Kansas and will sit out the 2015-16 season due to NCAA transfer rules.
- Participated in the 2013 Women's Basketball Coaches Association High School All-America Game and was a 2013 McDonald's All-America selection.
- Ranked the No. 14 overall player and the No. 2 guard in her class by ESPN HoopGurlz.
- A 2013 Oklahoman Super 5 selection and named 2012 *Tulsa World* All-Metro Player of the Year.
- Won a gold medal with the United States U17 National Team at the 2012 World Championships.

Year	GP-GS	Min/g	FG%	3FG%	FT%	Reb/g	Ast	Stl	TO	Blk	Pts/g
14-15*	35-0	18.3	.374	.364	.595	2.4	37	26	48	3	7.3
13-14*	37-13	18.8	.313	.319	.704	2.1	95	35	52	1	5.4
Career	72-13	18.5	34.8	34.5	.666	2.2	132	61	100	4	6.3

*at UNC



33
KYLEE KOPATICH
 G • 5-10 • FR
 OLATHE, KANSAS

SEASON HIGHS

Points 15 vs. Creighton (12/2/15)
 Rebounds 11 vs. Oral Roberts (12/22/15)
 Assists 5 at Oklahoma State (2/24/16)
 Steals 4 vs. Creighton (12/2/15)
 Blocks 1, 10x, last vs. Oklahoma (2/20/16)
 Minutes 45 vs. Navy (12/13/15)

CAREER HIGHS

Points 15 vs. Creighton (12/2/15)
 Rebounds 11 vs. Oral Roberts (12/22/15)
 Assists 5 at Oklahoma State (2/24/16)
 Steals 4 vs. Creighton (12/2/15)
 Blocks 1, 10x, last vs. Oklahoma (2/20/16)
 Minutes 45 vs. Navy (12/13/15)

- Twice named to the all-state team by the *Topeka Capital-Journal* and *Wichita Eagle*.
- 2014 Sunflower League Player of the Year and a Gatorade Player of the Year nominee.
- Three-time Kansas Class 6A Sub-State champion.
- Ranked 14th for her position and 96th overall by Hoopgurlz, and 15th for her position and No. 96 overall by Collegiate Girls Basketball Report.
- A 2015 McDonald's All-America nominee.

Year	GP-GS	Min/g	FG%	3FG%	FT%	Reb/g	Asst	Stl	TO	Blk	Pts/g
15-16	27-26	32.6	.316	.277	.806	4.5	40	36	55	10	9.6
Career	27-26	32.6	.316	.277	.806	4.5	40	36	55	10	9.6



44
KELEA DENNIS
 G • 6-1 • FR
 OAKLAND, CALIFORNIA

SEASON HIGHS

Points --
 Rebounds --
 Assists --
 Steals --
 Blocks --
 Minutes --

CAREER HIGHS

Points --
 Rebounds --
 Assists --
 Steals --
 Blocks --
 Minutes --

- Named Most Inspirational on her high school team all four years.

Year	GP-GS	Min/g	FG%	3FG%	FT%	Reb/g	Asst	Stl	TO	Blk	Pts/g
15-16	0-0	0.0	.000	.000	.000	0.0	0	0	0	0	0.0
Career	0-0	0.0	.000	.000	.000	0.0	0	0	0	0	0.0



55
TYLER JOHNSON
 F • 6-2 • FR
 LEAVENWORTH, KANSAS

SEASON HIGHS

Points 12 at Texas Tech (1/30/16)
 Rebounds 10 vs. Memphis (11/19/15)
 Assists 3 at Iowa State (1/9/16)
 Steals 2, 4x, last 20 vs. Oklahoma (2/20/16)
 Blocks 3, 4x, last vs. Iowa State (2/2/16)
 Minutes 24, 3x, last at Oklahoma State (2/24/16)

CAREER HIGHS

Points 12 at Texas Tech (1/30/16)
 Rebounds 10 vs. Memphis (11/19/15)
 Assists 3 at Iowa State (1/9/16)
 Steals 2, 3x, last vs. Oklahoma (2/20/16)
 Blocks 3, 4x, last vs. Iowa State (2/2/16)
 Minutes 24, 3x, last at Oklahoma State (2/24/16)

- Led Leavenworth High School to a 23-2 record and the 2015 Class 5A state championship her senior year and named MVP of the Kansas Class 5A Tournament.
- Team claimed the Kansas Class 5A state championship in 2014.
- Ranked 17th for her position by ESPN's Hoopgurlz and 22nd for her position by ProspectNation.
- A 2015 McDonald's All-America nominee.

Year	GP-GS	Min/g	FG%	3FG%	FT%	Reb/g	Asst	Stl	TO	Blk	Pts/g
15-16	27-3	16.7	.513	.000	.412	3.4	10	14	32	23	4.6
Career	27-3	16.7	.513	.000	.412	3.4	10	14	32	23	4.6

2015-16 PLAYER GAME-BY-GAME

#01 Lott, Chelsea

Opponent	Date	gs	min	Total		3-Pointers		Free throws		Rebounds				pf	a	t/o	blk	stl	pts	avg
				fg-fga	pct	3fg-fga	pct	ft-fa	pct	off	def	tot	avg							
at SMU	11/28/15		8	1-2	.500	0-0	.000	0-0	.000	1	0	1	1.0	1	0	2	1	0	2	2.0
UMKC	12/10/15		2	0-0	.000	0-0	.000	0-0	.000	0	3	3	2.0	0	0	0	1	0	0	1.0
TEXAS	01/13/15		4	0-0	.000	0-0	.000	0-0	.000	0	1	1	1.7	3	0	1	1	0	0	0.7
at Texas	1/27/16		2	0-1	.000	0-0	.000	2-2	1.000	1	0	1	1.5	0	0	0	0	0	2	1.0
at Baylor	02/06/16		3	0-0	.000	0-0	.000	0-0	.000	0	0	0	1.2	2	0	1	0	0	0	0.8
TCU	02/17/16		2	0-0	.000	0-0	.000	0-0	.000	0	1	1	1.2	0	0	1	0	0	0	0.7
at Oklahoma State	02-24-16		4	0-3	.000	0-0	.000	0-0	.000	1	0	1	1.1	1	0	1	0	0	0	0.6
Totals		0	25	1-6	.167	0-0	.000	2-2	1.000	3	5	8	1.1	7	0	6	3	0	4	0.6

Games played: 7
 Minutes/game: 3.6
 Points/game: 0.6
 FG Pct: 16.7
 FT Pct: 100.0

Rebounds/game: 1.1
 Turnovers/game: 0.9
 Blocks/game: 0.4

#03 Aldridge, Lauren

Opponent	Date	gs	min	Total		3-Pointers		Free throws		Rebounds				pf	a	t/o	blk	stl	pts	avg
				fg-fga	pct	3fg-fga	pct	ft-fa	pct	off	def	tot	avg							
TEXAS SOUTHERN	11/15/15	*	35	6-9	.667	1-3	.333	4-4	1.000	0	0	0	0.0	1	7	1	0	3	17	17.0
MEMPHIS	11/19/15	*	36	3-10	.300	1-2	.500	3-6	.500	0	1	1	0.5	3	2	2	0	0	10	13.5
at Arizona	11/23/15	*	31	5-11	.455	2-6	.333	2-2	1.000	1	2	3	1.3	4	4	3	0	1	14	13.7
vs NIU	11/27/15	*	34	6-10	.600	5-7	.714	0-0	.000	0	2	2	1.5	2	2	2	0	0	17	14.5
at SMU	11/28/15	*	38	3-10	.300	1-5	.200	1-2	.500	1	2	3	1.8	3	2	2	0	2	8	13.2
CREIGHTON	12/02/15	*	33	7-14	.500	4-9	.444	0-0	.000	0	1	1	1.7	0	3	3	0	0	18	14.0
ST. JOHN'S	12/06/15	*	35	4-11	.364	1-5	.200	4-4	1.000	0	0	0	1.4	0	2	4	0	0	13	13.9
UMKC	12/10/15	*	33	4-14	.286	2-6	.333	0-0	.000	0	1	1	1.4	2	2	3	0	1	10	13.4
NAVY	12/13/15	*	44	6-12	.500	3-7	.429	4-4	1.000	0	3	3	1.6	1	1	2	0	0	19	14.0
WASHINGTON STATE	12/20/15	*	37	4-13	.308	4-11	.364	1-2	.500	0	1	1	1.5	1	0	1	0	3	13	13.9
ORAL ROBERTS	12/22/15	*	34	1-8	.125	1-4	.250	1-2	.500	0	2	2	1.5	3	1	0	0	1	4	13.0
at Oklahoma	12/30/15	*	34	0-7	.000	0-4	.000	0-0	.000	0	2	2	1.6	2	0	1	0	1	0	11.9
WEST VIRGINIA	01/03/16	*	32	5-10	.500	3-6	.500	3-4	.750	0	4	4	1.8	1	0	4	0	1	16	12.2
BAYLOR	01/06/16	*	28	0-7	.000	0-4	.000	0-0	.000	0	1	1	1.7	2	2	1	0	1	0	11.4
at Iowa State	01-09-16	*	40	3-10	.300	2-3	.667	4-4	1.000	1	1	2	1.7	1	1	0	0	2	12	11.4
TEXAS	01/13/15	*	34	4-9	.444	4-9	.444	0-0	.000	0	1	1	1.7	3	2	2	0	0	12	11.4
at West Virginia	1-16-16	*	36	4-12	.333	2-7	.286	0-0	.000	0	2	2	1.7	0	1	5	0	1	10	11.4
KANSAS STATE	01/20/16	*	40	1-8	.125	1-6	.167	2-2	1.000	2	0	2	1.7	2	3	1	0	1	5	11.0
OKLAHOMA STATE	01/24/16	*	35	3-8	.375	2-4	.500	0-0	.000	1	2	3	1.8	0	3	1	0	1	8	10.8
at Texas	1/27/16	*	32	5-10	.500	5-8	.625	0-0	.000	0	1	1	1.8	2	2	6	0	3	15	11.1
at Texas Tech	1-30-16	*	38	1-13	.077	1-9	.111	0-0	.000	1	2	3	1.8	2	5	3	0	1	3	10.7
IOWA STATE	02/02/16	*	32	2-8	.250	0-0	.000	0-0	.000	0	2	2	1.8	3	2	2	0	0	4	10.4
at Baylor	02/06/16	*	36	4-8	.500	4-8	.500	0-0	.000	0	0	0	1.7	2	2	3	0	0	12	10.4
at Kansas State	2/13/16	*	30	1-7	.143	1-6	.167	0-0	.000	0	1	1	1.7	5	2	3	0	1	3	10.1
TCU	02/17/16	*	32	2-4	.500	1-1	1.000	2-2	1.000	1	1	2	1.7	0	2	2	0	1	7	10.0
OKLAHOMA	02/20/16	*	35	8-12	.667	4-6	.667	0-0	.000	0	2	2	1.7	3	7	2	0	0	20	10.4
at Oklahoma State	02-24-16	*	37	5-9	.556	1-4	.250	2-2	1.000	1	2	3	1.8	0	3	1	0	1	13	10.5
Totals		27	941	97-264	.367	56-150	.373	33-40	.825	9	39	48	1.8	48	63	60	0	26	283	10.5

Games played: 27
 Minutes/game: 34.9
 Points/game: 10.5
 FG Pct: 36.7
 3FG Pct: 37.3
 FT Pct: 82.5

Rebounds/game: 1.8
 Assists/game: 2.3
 Turnovers/game: 2.2
 Assist/turnover ratio: 1.1
 Steals/game: 1.0

2015-16 PLAYER GAME-BY-GAME

#04 Brown, Jada

Opponent	Date	gs	min	Total		3-Pointers		Free throws		Rebounds			pf	a	t/o	blk	stl	pts	avg	
				fg-fga	pct	3fg-fga	pct	ft-fa	pct	off	def	tot								avg
TEXAS SOUTHERN	11/15/15		25	3-7	.429	1-3	.333	1-2	.500	5	1	6	6.0	1	0	2	0	0	8	8.0
MEMPHIS	11/19/15	*	25	4-7	.571	0-0	.000	2-2	1.000	1	3	4	5.0	2	2	3	0	2	10	9.0
at Arizona	11/23/15	*	23	3-6	.500	0-1	.000	2-4	.500	2	2	4	4.7	4	0	3	0	0	8	8.7
vs NIU	11/27/15	*	31	2-6	.333	0-2	.000	4-6	.667	2	2	4	4.5	3	1	3	0	4	8	8.5
at SMU	11/28/15	*	14	0-5	.000	0-1	.000	0-0	.000	4	1	5	4.6	4	0	4	0	0	0	6.8
CREIGHTON	12/02/15		24	0-1	.000	0-1	.000	0-0	.000	1	2	3	4.3	1	1	1	1	1	0	5.7
ST. JOHN'S	12/06/15		10	0-0	.000	0-0	.000	0-0	.000	0	0	0	3.7	1	1	4	0	0	0	4.9
UMKC	12/10/15		26	2-6	.333	0-1	.000	0-0	.000	3	4	7	4.1	4	0	0	0	2	4	4.8
NAVY	12/13/15	*	28	3-6	.500	0-0	.000	1-1	1.000	4	4	8	4.6	0	0	3	1	1	7	5.0
WASHINGTON STATE	12/20/15	*	24	3-5	.600	0-0	.000	2-6	.333	4	1	5	4.6	1	1	1	0	0	8	5.3
ORAL ROBERTS	12/22/15	*	33	4-9	.444	0-2	.000	0-2	.000	3	1	4	4.5	0	0	2	0	0	8	5.5
at Oklahoma	12/30/15	*	17	0-1	.000	0-0	.000	0-0	.000	0	0	0	4.2	1	0	1	0	0	0	5.1
WEST VIRGINIA	01/03/16		12	1-3	.333	0-0	.000	0-0	.000	0	0	0	3.8	1	2	2	0	1	2	4.8
BAYLOR	01/06/16		8	0-0	.000	0-0	.000	0-0	.000	0	1	1	3.6	4	1	2	0	1	0	4.5
at Iowa State	01-09-16		20	2-4	.500	0-1	.000	3-4	.750	0	2	2	3.5	1	1	2	0	1	7	4.7
TEXAS	01/13/15		15	0-1	.000	0-0	.000	3-4	.750	0	2	2	3.4	3	0	1	0	0	3	4.6
at West Virginia	1-16-16		19	0-4	.000	0-0	.000	0-0	.000	1	0	1	3.3	3	0	1	0	0	0	4.3
KANSAS STATE	01/20/16		17	1-5	.200	1-1	1.000	4-4	1.000	1	0	1	3.2	1	0	0	0	2	7	4.4
OKLAHOMA STATE	01/24/16		13	0-1	.000	0-0	.000	2-2	1.000	0	1	1	3.1	3	0	3	1	0	2	4.3
at Texas	1/27/16		31	0-3	.000	0-0	.000	0-2	.000	1	1	2	3.0	3	0	2	1	1	0	4.1
at Texas Tech	1-30-16		18	1-2	.500	0-0	.000	1-1	1.000	1	8	9	3.3	3	0	1	1	0	3	4.0
IOWA STATE	02/02/16		20	6-7	.857	0-0	.000	2-3	.667	4	0	4	3.3	4	0	1	1	1	14	4.5
at Baylor	02/06/16		23	1-4	.250	0-1	.000	0-0	.000	3	2	5	3.4	2	2	3	0	0	2	4.4
at Kansas State	2/13/16		20	2-4	.500	1-1	1.000	3-3	1.000	1	3	4	3.4	1	0	2	0	0	8	4.5
TCU	02/17/16		17	1-3	.333	0-0	.000	2-3	.667	2	2	4	3.4	3	1	2	0	0	4	4.5
OKLAHOMA	02/20/16		22	3-4	.750	0-1	.000	0-0	.000	4	1	5	3.5	3	2	2	0	2	6	4.6
at Oklahoma State	02-24-16		18	1-3	.333	0-0	.000	0-0	.000	1	3	4	3.5	3	0	3	1	0	2	4.5
Totals		8	553	43-107	.402	3-16	.188	32-49	.653	48	47	95	3.5	60	15	54	7	19	121	4.5

Games played: 27
Minutes/game: 20.5
Points/game: 4.5
FG Pct: 40.2
3FG Pct: 18.8
FT Pct: 65.3

Rebounds/game: 3.5
Assists/game: 0.6
Turnovers/game: 2.0
Assist/turnover ratio: 0.3
Steals/game: 0.7
Blocks/game: 0.3

2015-16 PLAYER GAME-BY-GAME

#12 O'Neal, Timeka

Opponent	Date	gs	min	Total		3-Pointers		Free throws		Rebounds				pf	a	t/o	blk	stl	pts	avg
				fg-fga	pct	3fg-fga	pct	ft-fa	pct	off	def	tot	avg							
TEXAS SOUTHERN	11/15/15		20	4-7	.571	4-6	.667	0-0	.000	0	1	1	1.0	2	1	1	0	1	12	12.0
MEMPHIS	11/19/15		18	3-6	.500	3-6	.500	0-0	.000	1	1	2	1.5	3	1	1	0	0	9	10.5
at Arizona	11/23/15		20	1-3	.333	1-3	.333	0-0	.000	0	2	2	1.7	2	1	1	0	0	3	8.0
vs NIU	11/27/15	*	17	0-2	.000	0-1	.000	0-0	.000	1	2	3	2.0	3	1	1	0	0	0	6.0
at SMU	11/28/15		14	1-3	.333	1-2	.500	0-0	.000	0	2	2	2.0	2	0	2	0	0	3	5.4
CREIGHTON	12/02/15		16	3-3	1.000	0-0	.000	2-2	1.000	0	1	1	1.8	0	0	0	0	0	8	5.8
ST. JOHN'S	12/06/15		14	3-5	.600	2-2	1.000	1-2	.500	0	0	0	1.6	3	1	2	0	1	9	6.3
UMKC	12/10/15		28	2-6	.333	2-4	.500	0-0	.000	0	3	3	1.8	1	1	0	0	0	6	6.3
NAVY	12/13/15		9	0-3	.000	0-3	.000	0-0	.000	0	0	0	1.6	5	1	0	0	0	0	5.6
WASHINGTON STATE	12/20/15		15	2-6	.333	1-4	.250	0-0	.000	0	0	0	1.4	1	2	2	0	2	5	5.5
ORAL ROBERTS	12/22/15		22	2-5	.400	1-3	.333	0-0	.000	0	2	2	1.5	0	2	0	0	0	5	5.5
at Oklahoma	12/30/15		22	2-8	.250	2-6	.333	0-0	.000	0	3	3	1.6	0	2	3	0	2	6	5.5
WEST VIRGINIA	01/03/16		15	0-2	.000	0-0	.000	0-0	.000	1	2	3	1.7	0	0	1	0	0	0	5.1
BAYLOR	01/06/16		11	2-4	.500	0-1	.000	0-0	.000	0	1	1	1.6	0	0	0	0	1	4	5.0
at Iowa State	01-09-16		5	0-0	.000	0-0	.000	0-0	.000	0	0	0	1.5	1	0	1	0	0	0	4.7
TEXAS	01/13/15	*	23	2-7	.286	2-6	.333	0-0	.000	0	0	0	1.4	0	1	1	0	1	6	4.8
at West Virginia	1-16-16	*	18	1-5	.200	1-3	.333	0-0	.000	1	0	1	1.4	0	1	2	0	2	3	4.6
KANSAS STATE	01/20/16	*	22	3-7	.429	3-7	.429	0-0	.000	0	3	3	1.5	1	1	1	0	0	9	4.9
OKLAHOMA STATE	01/24/16	*	21	0-5	.000	0-1	.000	0-0	.000	0	0	0	1.4	2	2	3	0	0	0	4.6
at Texas	1/27/16		16	1-5	.200	1-5	.200	1-2	.500	0	2	2	1.5	0	0	3	0	1	4	4.6
at Texas Tech	1-30-16		13	0-2	.000	0-1	.000	0-0	.000	0	1	1	1.4	2	0	0	0	0	0	4.4
IOWA STATE	02/02/16		20	2-4	.500	2-3	.667	0-0	.000	0	1	1	1.4	1	0	2	0	0	6	4.5
at Baylor	02/06/16		15	1-6	.167	1-5	.200	1-2	.500	0	0	0	1.3	1	1	1	0	1	4	4.4
at Kansas State	2/13/16		27	6-12	.500	6-12	.500	0-0	.000	0	3	3	1.4	3	0	1	0	2	18	5.0
TCU	02/17/16		19	1-7	.143	1-4	.250	0-0	.000	0	0	0	1.4	1	1	2	0	0	3	4.9
OKLAHOMA	02/20/16		27	5-9	.556	5-8	.625	0-0	.000	1	3	4	1.5	2	3	1	0	0	15	5.3
at Oklahoma State	02-24-16		23	2-5	.400	2-5	.400	0-0	.000	0	3	3	1.5	0	0	2	0	0	6	5.3
Totals		5	490	49-137	.358	41-101	.406	5-8	.625	5	36	41	1.5	36	23	34	0	14	144	5.3

Games played: 27
 Minutes/game: 18.1
 Points/game: 5.3
 FG Pct: 35.8
 3FG Pct: 40.6
 FT Pct: 62.5

Rebounds/game: 1.5
 Assists/game: 0.9
 Turnovers/game: 1.3
 Assist/turnover ratio: 0.7
 Steals/game: 0.5

2015-16 PLAYER GAME-BY-GAME

#13 Enabulele, Lorraine

Opponent	Date	gs	min	Total		3-Pointers		Free throws		Rebounds				pf	a	t/o	blk	stl	pts	avg
				fg-fga	pct	3fg-fga	pct	ft-fa	pct	off	def	tot	avg							
TEXAS SOUTHERN	11/15/15		2	0-1	.000	0-0	.000	0-0	.000	0	0	0	0.0	1	0	1	0	0	0	0.0
at Arizona	11/23/15		4	1-1	1.000	0-0	.000	0-0	.000	2	0	2	1.0	1	0	0	0	0	2	1.0
at Oklahoma	12/30/15		1	0-0	.000	0-0	.000	0-0	.000	0	0	0	0.7	0	0	0	0	0	0	0.7
TEXAS	01/13/15		4	0-0	.000	0-0	.000	0-0	.000	0	0	0	0.5	1	1	0	0	0	0	0.5
Totals		0	11	1-2	.500	0-0	.000	0-0	.000	2	0	2	0.5	3	1	1	0	0	2	0.5

Games played: 4
 Minutes/game: 2.8
 Points/game: 0.5
 FG Pct: 50.0

Rebounds/game: 0.5
 Assists/game: 0.3
 Turnovers/game: 0.3
 Assist/turnover ratio: 1.0

#15 Robertson, Aisia

Opponent	Date	gs	min	Total		3-Pointers		Free throws		Rebounds				pf	a	t/o	blk	stl	pts	avg
				fg-fga	pct	3fg-fga	pct	ft-fa	pct	off	def	tot	avg							
TEXAS SOUTHERN	11/15/15	*	19	3-8	.375	0-2	.000	0-3	.000	2	2	4	4.0	1	2	1	0	2	6	6.0
MEMPHIS	11/19/15	*	16	4-6	.667	0-0	.000	0-0	.000	1	6	7	5.5	3	1	3	0	2	8	7.0
at Arizona	11/23/15	*	19	1-10	.100	0-1	.000	0-0	.000	0	3	3	4.7	3	0	1	0	0	2	5.3
vs NIU	11/27/15		15	1-4	.250	0-0	.000	4-4	1.000	0	3	3	4.3	3	0	4	0	1	6	5.5
at SMU	11/28/15	*	27	3-8	.375	0-2	.000	1-2	.500	3	3	6	4.6	5	5	4	0	2	7	5.8
CREIGHTON	12/02/15	*	16	1-10	.100	0-3	.000	1-2	.500	0	3	3	4.3	1	0	1	0	1	3	5.3
ST. JOHN'S	12/06/15	*	15	2-6	.333	1-3	.333	2-2	1.000	1	4	5	4.4	2	2	1	0	2	7	5.6
UMKC	12/10/15	*	13	0-2	.000	0-0	.000	0-0	.000	1	0	1	4.0	1	0	2	0	1	0	4.9
NAVY	12/13/15		19	0-2	.000	0-0	.000	1-2	.500	1	6	7	4.3	1	2	4	1	3	1	4.4
WASHINGTON STATE	12/20/15	*	22	1-4	.250	0-0	.000	0-0	.000	0	4	4	4.3	4	1	3	0	0	2	4.2
ORAL ROBERTS	12/22/15		9	2-2	1.000	0-0	.000	2-2	1.000	0	2	2	4.1	3	0	1	0	0	6	4.4
at Oklahoma	12/30/15		3	0-2	.000	0-0	.000	0-0	.000	0	0	0	3.8	1	0	3	0	0	0	4.0
WEST VIRGINIA	01/03/16		25	1-3	.333	0-0	.000	1-4	.250	1	2	3	3.7	1	2	3	0	1	3	3.9
BAYLOR	01/06/16	*	25	2-5	.400	0-0	.000	2-2	1.000	0	4	4	3.7	3	1	5	1	2	6	4.1
at Iowa State	01-09-16	*	21	2-5	.400	0-1	.000	0-0	.000	0	6	6	3.9	4	0	2	0	1	4	4.1
TEXAS	01/13/15	*	18	0-4	.000	0-1	.000	0-0	.000	0	3	3	3.8	4	1	3	0	1	0	3.8
at West Virginia	1-16-16		18	0-3	.000	0-0	.000	0-0	.000	0	5	5	3.9	3	0	2	1	1	0	3.6
KANSAS STATE	01/20/16		11	1-5	.200	1-5	.200	0-0	.000	0	2	2	3.8	1	1	3	0	0	3	3.6
OKLAHOMA STATE	01/24/16		16	2-9	.222	1-1	1.000	0-0	.000	0	0	0	3.6	2	0	2	2	3	5	3.6
at Texas	1/27/16		18	0-4	.000	0-1	.000	1-2	.500	0	5	5	3.7	1	3	3	1	1	1	3.5
at Texas Tech	1-30-16	*	21	2-7	.286	0-0	.000	0-0	.000	0	3	3	3.6	4	2	3	0	1	4	3.5
IOWA STATE	02/02/16	*	14	1-3	.333	0-0	.000	0-0	.000	2	1	3	3.6	4	0	2	1	1	2	3.5
at Baylor	02/06/16	*	23	4-15	.267	2-4	.500	0-0	.000	1	4	5	3.7	3	2	1	1	2	10	3.7
at Kansas State	2/13/16	*	19	2-8	.250	2-4	.500	0-0	.000	1	1	2	3.6	2	3	4	0	2	6	3.8
TCU	02/17/16	*	22	5-17	.294	0-2	.000	1-1	1.000	1	1	2	3.5	2	2	2	0	3	11	4.1
OKLAHOMA	02/20/16	*	17	3-5	.600	0-0	.000	0-0	.000	0	4	4	3.5	3	0	4	0	1	6	4.2
at Oklahoma State	02-24-16	*	18	2-7	.286	1-3	.333	2-2	1.000	1	3	4	3.6	2	1	2	0	0	7	4.3
Totals		18	479	45-164	.274	8-33	.242	18-28	.643	16	80	96	3.6	67	31	69	8	34	116	4.3

Games played: 27
 Minutes/game: 17.7
 Points/game: 4.3
 FG Pct: 27.4
 3FG Pct: 24.2
 FT Pct: 64.3

Rebounds/game: 3.6
 Assists/game: 1.1
 Turnovers/game: 2.6
 Assist/turnover ratio: 0.4
 Steals/game: 1.3
 Blocks/game: 0.3

2015-16 PLAYER GAME-BY-GAME

#20 Christopher, Jayde

Opponent	Date	gs	min	Total		3-Pointers		Free throws		Rebounds				pf	a	t/o	blk	stl	pts	avg
				fg-fga	pct	3fg-fga	pct	ft-fa	pct	off	def	tot	avg							
TEXAS SOUTHERN	11/15/15		6	1-1	1.000	0-0	.000	0-0	.000	0	0	0	0.0	0	1	0	0	0	2	2.0
MEMPHIS	11/19/15		14	2-2	1.000	0-0	.000	0-2	.000	0	1	1	0.5	3	4	2	0	1	4	3.0
at Arizona	11/23/15		9	0-2	.000	0-0	.000	0-0	.000	0	0	0	0.3	2	1	1	0	1	0	2.0
vs NIU	11/27/15		14	0-2	.000	0-0	.000	2-2	1.000	0	0	0	0.3	0	6	0	0	0	2	2.0
at SMU	11/28/15		6	0-2	.000	0-0	.000	1-2	.500	0	0	0	0.2	0	1	0	0	0	1	1.8
CREIGHTON	12/02/15		18	1-3	.333	0-0	.000	0-0	.000	0	2	2	0.5	0	4	1	0	0	2	1.8
ST. JOHN'S	12/06/15		21	3-5	.600	1-1	1.000	2-4	.500	0	1	1	0.6	1	3	2	0	1	9	2.9
UMKC	12/10/15		15	1-7	.143	0-4	.000	1-1	1.000	0	0	0	0.5	3	3	0	0	0	3	2.9
NAVY	12/13/15	*	18	1-1	1.000	0-0	.000	2-2	1.000	0	2	2	0.7	0	2	1	0	1	4	3.0
WASHINGTON STATE	12/20/15		12	1-3	.333	1-1	1.000	0-0	.000	0	3	3	0.9	0	2	1	0	0	3	3.0
ORAL ROBERTS	12/22/15	*	19	4-8	.500	0-1	.000	0-0	.000	0	2	2	1.0	2	4	0	0	0	8	3.5
at Oklahoma	12/30/15	*	22	3-5	.600	0-0	.000	0-0	.000	2	0	2	1.1	1	0	3	0	2	6	3.7
WEST VIRGINIA	01/03/16	*	15	1-1	1.000	0-0	.000	0-0	.000	0	0	0	1.0	3	0	1	0	0	2	3.5
BAYLOR	01/06/16		25	0-0	.000	0-0	.000	2-6	.333	0	2	2	1.1	2	0	2	0	1	2	3.4
at Iowa State	01-09-16		18	0-4	.000	0-1	.000	0-0	.000	2	1	3	1.2	1	2	3	0	1	0	3.2
TEXAS	01/13/15		19	0-2	.000	0-1	.000	0-0	.000	1	0	1	1.2	0	1	4	0	0	0	3.0
at West Virginia	1-16-16		15	0-2	.000	0-0	.000	2-2	1.000	0	0	0	1.1	0	0	2	0	1	2	2.9
KANSAS STATE	01/20/16		9	0-0	.000	0-0	.000	0-0	.000	0	2	2	1.2	1	1	1	0	0	0	2.8
OKLAHOMA STATE	01/24/16		25	2-4	.500	0-0	.000	0-0	.000	0	0	0	1.1	1	4	2	0	0	4	2.8
at Texas	1/27/16	*	21	0-3	.000	0-0	.000	0-0	.000	0	1	1	1.1	0	1	1	0	0	0	2.7
at Texas Tech	1-30-16		12	0-1	.000	0-1	.000	0-0	.000	0	1	1	1.1	2	1	1	0	0	0	2.6
IOWA STATE	02/02/16		15	2-6	.333	0-2	.000	0-0	.000	0	1	1	1.1	1	2	3	1	1	4	2.6
at Baylor	02/06/16		21	0-5	.000	0-1	.000	0-0	.000	0	0	0	1.0	1	3	3	0	0	0	2.5
at Kansas State	2/13/16		12	0-0	.000	0-0	.000	0-0	.000	1	0	1	1.0	1	4	0	0	1	0	2.4
TCU	02/17/16		15	0-1	.000	0-0	.000	0-0	.000	0	0	0	1.0	1	2	2	0	1	0	2.3
OKLAHOMA	02/20/16		6	0-2	.000	0-1	.000	0-0	.000	1	0	1	1.0	0	0	1	0	0	0	2.2
at Oklahoma State	02-24-16		10	0-0	.000	0-0	.000	0-2	.000	1	0	1	1.0	0	1	1	0	0	0	2.1
Totals		5	412	22-72	.306	2-14	.143	12-23	.522	8	19	27	1.0	26	53	38	1	12	58	2.1

Games played: 27
Minutes/game: 15.3
Points/game: 2.1
FG Pct: 30.6
3FG Pct: 14.3
FT Pct: 52.2

Rebounds/game: 1.0
Assists/game: 2.0
Turnovers/game: 1.4
Assist/turnover ratio: 1.4
Steals/game: 0.4
Blocks/game: 0.0

2015-16 PLAYER GAME-BY-GAME

#22 Cheadle, Chayla

Opponent	Date	gs	min	Total		3-Pointers		Free throws		Rebounds				pf	a	t/o	blk	stl	pts	avg	
				fg-fga	pct	3fg-fga	pct	ft-fa	pct	off	def	tot	avg								
TEXAS SOUTHERN	11/15/15	*	22	0-8	.000	0-1	.000	0-0	.000	0	1	1	1.0	2	0	2	0	0	0	0.0	
MEMPHIS	11/19/15		18	3-7	.429	0-1	.000	0-1	.000	1	0	1	1.0	2	0	2	0	1	6	3.0	
at Arizona	11/23/15		25	1-4	.250	0-1	.000	2-2	1.000	1	1	2	1.3	2	1	2	0	0	4	3.3	
vs NIU	11/27/15		20	1-5	.200	1-3	.333	0-0	.000	1	1	2	1.5	2	2	0	0	1	3	3.3	
at SMU	11/28/15		29	7-14	.500	0-4	.000	3-3	1.000	4	3	7	2.6	5	2	4	0	2	17	6.0	
CREIGHTON	12/02/15	*	23	2-6	.333	1-3	.333	0-0	.000	0	0	0	2.2	4	2	0	0	1	5	5.8	
ST. JOHN'S	12/06/15	*	28	2-6	.333	1-3	.333	1-2	.500	1	2	3	2.3	3	2	1	1	2	6	5.9	
UMKC	12/10/15	*	20	0-4	.000	0-2	.000	0-0	.000	1	1	2	2.3	2	1	3	0	1	0	5.1	
NAVY	12/13/15		19	1-6	.167	0-1	.000	0-0	.000	0	1	1	2.1	1	1	0	0	0	2	4.8	
WASHINGTON STATE	12/20/15		16	0-2	.000	0-1	.000	0-0	.000	0	1	1	2.0	2	2	0	0	1	0	4.3	
ORAL ROBERTS	12/22/15		9	1-4	.250	0-1	.000	0-0	.000	2	2	4	2.2	2	0	0	0	0	2	4.1	
at Oklahoma	12/30/15		23	4-8	.500	0-0	.000	1-2	.500	1	4	5	2.4	1	0	3	0	1	9	4.5	
WEST VIRGINIA	01/03/16	*	22	3-8	.375	0-1	.000	0-1	.000	4	3	7	2.8	4	2	1	0	0	6	4.6	
BAYLOR	01/06/16	*	30	2-7	.286	1-3	.333	7-8	.875	3	3	6	3.0	1	1	1	1	0	12	5.1	
at Iowa State	01-09-16	*	20	3-9	.333	1-2	.500	1-3	.333	1	2	3	3.0	5	1	2	0	0	8	5.3	
TEXAS	01/13/15	*	23	0-0	.000	0-0	.000	0-0	.000	1	5	6	3.2	2	2	5	0	1	0	5.0	
at West Virginia	1-16-16	*	20	1-6	.167	0-1	.000	1-4	.250	2	1	3	3.2	4	0	1	0	0	3	4.9	
KANSAS STATE	01/20/16	*	23	2-10	.200	1-5	.200	3-5	.600	3	0	3	3.2	1	3	1	0	3	8	5.1	
OKLAHOMA STATE	01/24/16	*	27	1-6	.167	0-2	.000	0-0	.000	4	5	9	3.5	3	2	1	0	2	2	4.9	
at Texas	1/27/16	*	9	0-0	.000	0-0	.000	0-0	.000	0	0	0	3.3	5	1	1	0	0	0	4.7	
at Texas Tech	1-30-16	*	24	5-10	.500	1-2	.500	0-0	.000	4	1	5	3.4	2	1	2	0	1	11	5.0	
IOWA STATE	02/02/16	*	27	3-9	.333	1-3	.333	0-0	.000	1	3	4	3.4	3	2	5	0	2	7	5.0	
at Baylor	02/06/16	*	17	1-3	.333	1-2	.500	0-0	.000	1	1	2	3.3	2	1	3	0	1	3	5.0	
at Kansas State	2/13/16	*	20	3-6	.500	0-1	.000	1-1	1.000	1	3	4	3.4	1	3	2	1	2	7	5.0	
TCU	02/17/16	*	24	1-6	.167	0-3	.000	3-6	.500	2	3	5	3.4	3	1	0	0	3	5	5.0	
OKLAHOMA	02/20/16	*	18	3-6	.500	0-1	.000	1-2	.500	0	1	1	3.3	2	3	2	0	1	7	5.1	
at Oklahoma State	02-24-16	*	22	2-8	.250	1-4	.250	0-0	.000	1	1	2	3.3	2	1	1	0	0	5	5.1	
Totals			19	578	52-168	.310	10-51	.196	24-40	.600	40	49	89	3.3	68	37	45	3	26	138	5.1

Games played: 27
Minutes/game: 21.4
Points/game: 5.1
FG Pct: 31.0
3FG Pct: 19.6
FT Pct: 60.0

Rebounds/game: 3.3
Assists/game: 1.4
Turnovers/game: 1.7
Assist/turnover ratio: 0.8
Steals/game: 1.0
Blocks/game: 0.1

2015-16 PLAYER GAME-BY-GAME

#25 ManningAllen, Caelynn

Opponent	Date	gs	min	Total		3-Pointers		Free throws		Rebounds				pf	a	t/o	blk	stl	pts	avg	
				fg-fga	pct	3fg-fga	pct	ft-fa	pct	off	def	tot	avg								
TEXAS SOUTHERN	11/15/15	*	23	6-12	.500	0-0	.000	0-0	.000	3	4	7	7.0	3	0	2	2	1	12	12.0	
MEMPHIS	11/19/15	*	23	2-4	.500	0-0	.000	1-2	.500	1	6	7	7.0	2	1	4	0	0	5	8.5	
at Arizona	11/23/15	*	29	5-6	.833	0-0	.000	1-1	1.000	2	6	8	7.3	3	0	2	4	0	11	9.3	
vs NIU	11/27/15	*	26	5-14	.357	0-0	.000	2-6	.333	3	8	11	8.3	4	1	4	4	0	12	10.0	
at SMU	11/28/15	*	24	4-6	.667	0-0	.000	6-8	.750	2	2	4	7.4	4	0	3	3	3	14	10.8	
CREIGHTON	12/02/15	*	28	3-6	.500	0-0	.000	2-2	1.000	2	5	7	7.3	1	1	2	0	0	8	10.3	
ST. JOHN'S	12/06/15	*	28	5-7	.714	0-0	.000	5-9	.556	2	3	5	7.0	2	0	4	2	0	15	11.0	
UMKC	12/10/15	*	19	0-6	.000	0-0	.000	1-2	.500	3	2	5	6.8	4	0	1	0	0	1	9.8	
NAVY	12/13/15		32	5-8	.625	0-0	.000	0-0	.000	3	8	11	7.2	1	0	4	1	2	10	9.8	
WASHINGTON STATE	12/20/15	*	30	3-5	.600	0-0	.000	4-6	.667	2	5	7	7.2	1	0	1	3	0	10	9.8	
ORAL ROBERTS	12/22/15	*	31	6-11	.545	0-0	.000	0-0	.000	2	4	6	7.1	2	0	3	3	2	12	10.0	
at Oklahoma	12/30/15	*	21	2-10	.200	0-0	.000	1-2	.500	1	4	5	6.9	4	1	0	0	1	5	9.6	
WEST VIRGINIA	01/03/16	*	29	3-10	.300	0-0	.000	1-1	1.000	1	3	4	6.7	2	2	4	1	1	7	9.4	
BAYLOR	01/06/16	*	27	4-10	.400	0-0	.000	1-2	.500	0	3	3	6.4	4	0	3	0	0	9	9.4	
at Iowa State	01-09-16	*	23	4-8	.500	0-0	.000	0-0	.000	3	3	6	6.4	5	1	2	3	0	8	9.3	
TEXAS	01/13/15	*	14	2-11	.182	0-0	.000	1-2	.500	0	3	3	6.2	1	0	1	2	1	5	9.0	
at West Virginia	1-16-16		17	3-6	.500	0-0	.000	0-0	.000	6	2	8	6.3	4	0	3	2	0	6	8.8	
KANSAS STATE	01/20/16	*	16	0-4	.000	0-0	.000	0-0	.000	1	2	3	6.1	3	0	4	0	1	0	8.3	
OKLAHOMA STATE	01/24/16		17	1-4	.250	0-0	.000	0-0	.000	1	0	1	5.8	1	0	4	0	2	2	8.0	
at Texas	1/27/16	*	29	6-9	.667	0-0	.000	2-3	.667	2	4	6	5.9	4	0	3	1	2	14	8.3	
at Texas Tech	1-30-16	*	18	2-7	.286	0-0	.000	4-4	1.000	1	3	4	5.8	3	0	6	1	1	8	8.3	
IOWA STATE	02/02/16	*	12	2-4	.500	0-0	.000	2-4	.500	1	2	3	5.6	3	0	4	1	2	6	8.2	
at Baylor	02/06/16	*	21	1-5	.200	0-0	.000	0-0	.000	1	2	3	5.5	4	0	5	0	0	2	7.9	
at Kansas State	2/13/16	*	19	2-6	.333	0-0	.000	0-0	.000	2	0	2	5.4	1	5	3	0	3	4	7.8	
TCU	02/17/16	*	20	3-7	.429	0-0	.000	0-0	.000	2	5	7	5.4	2	0	1	1	0	6	7.7	
OKLAHOMA	02/20/16	*	16	0-1	.000	0-0	.000	4-4	1.000	0	2	2	5.3	4	0	4	1	0	4	7.5	
at Oklahoma State	02-24-16	*	12	0-3	.000	0-0	.000	0-0	.000	1	2	3	5.2	2	0	1	1	0	0	7.3	
Totals			24	604	79-190	.416	0-0	.000	38-58	.655	48	93	141	5.2	74	12	78	36	22	196	7.3

Games played: 27
 Minutes/game: 22.4
 Points/game: 7.3
 FG Pct: 41.6
 FT Pct: 65.5

Rebounds/game: 5.2
 Assists/game: 0.4
 Turnovers/game: 2.9
 Assist/turnover ratio: 0.2
 Steals/game: 0.8
 Blocks/game: 1.3

2015-16 PLAYER GAME-BY-GAME

#33 Kopatich, Kylee

Opponent	Date	gs	min	Total		3-Pointers		Free throws		Rebounds				pf	a	t/o	blk	stl	pts	avg	
				fg-fga	pct	3fg-fga	pct	ft-fa	pct	off	def	tot	avg								
TEXAS SOUTHERN	11/15/15	*	33	4-14	.286	1-5	.200	0-0	.000	3	5	8	8.0	1	1	2	0	0	9	9.0	
MEMPHIS	11/19/15	*	33	5-10	.500	2-5	.400	2-5	.400	3	3	6	7.0	0	2	2	0	1	14	11.5	
at Arizona	11/23/15	*	33	1-12	.083	1-8	.125	3-4	.750	0	5	5	6.3	4	2	3	1	0	6	9.7	
vs NIU	11/27/15	*	29	3-8	.375	3-7	.429	1-2	.500	0	2	2	5.3	1	4	1	0	1	10	9.8	
at SMU	11/28/15	*	32	3-8	.375	2-6	.333	2-2	1.000	1	5	6	5.4	4	1	2	1	0	10	9.8	
CREIGHTON	12/02/15	*	30	5-8	.625	3-3	1.000	2-2	1.000	2	5	7	5.7	1	1	1	1	4	15	10.7	
ST. JOHN'S	12/06/15	*	37	4-7	.571	2-5	.400	0-0	.000	1	6	7	5.9	0	3	0	0	1	10	10.6	
UMKC	12/10/15	*	25	4-10	.400	2-5	.400	4-4	1.000	1	4	5	5.8	4	0	0	1	0	14	11.0	
NAVY	12/13/15	*	45	4-16	.250	1-10	.100	5-6	.833	0	5	5	5.7	3	3	1	0	1	14	11.3	
WASHINGTON STATE	12/20/15	*	34	2-12	.167	0-8	.000	7-10	.700	1	2	3	5.4	2	0	4	0	2	11	11.3	
ORAL ROBERTS	12/22/15	*	35	5-12	.417	1-4	.250	3-3	1.000	1	10	11	5.9	3	2	4	0	2	14	11.5	
at Oklahoma	12/30/15	*	38	3-11	.273	2-8	.250	2-2	1.000	1	4	5	5.8	1	1	1	1	1	10	11.4	
WEST VIRGINIA	01/03/16	*	32	2-5	.400	0-1	.000	3-4	.750	0	2	2	5.5	1	1	4	0	1	7	11.1	
BAYLOR	01/06/16	*	31	3-6	.500	1-4	.250	0-0	.000	0	1	1	5.2	0	1	1	0	2	7	10.8	
at Iowa State	01-09-16	*	36	2-8	.250	2-3	.667	0-0	.000	0	7	7	5.3	3	3	1	0	0	6	10.5	
TEXAS	01/13/15		24	3-12	.250	2-8	.250	2-2	1.000	1	2	3	5.2	2	0	3	1	0	10	10.4	
at West Virginia	1-16-16	*	34	2-13	.154	0-2	.000	5-6	.833	0	7	7	5.3	3	1	3	1	2	9	10.4	
KANSAS STATE	01/20/16	*	38	2-8	.250	2-6	.333	0-0	.000	1	6	7	5.4	3	1	1	0	1	6	10.1	
OKLAHOMA STATE	01/24/16	*	23	4-11	.364	2-7	.286	4-4	1.000	0	3	3	5.3	4	0	3	0	2	14	10.3	
at Texas	1/27/16	*	31	3-9	.333	2-4	.500	0-0	.000	0	1	1	5.1	2	1	3	0	1	8	10.2	
at Texas Tech	1-30-16	*	35	1-7	.143	1-3	.333	0-0	.000	1	3	4	5.0	3	1	2	1	3	3	9.9	
IOWA STATE	02/02/16	*	38	2-10	.200	0-2	.000	4-4	1.000	2	1	3	4.9	3	1	1	1	1	8	9.8	
at Baylor	02/06/16	*	25	6-12	.500	2-8	.250	0-0	.000	0	2	2	4.8	2	2	3	0	3	14	10.0	
at Kansas State	2/13/16	*	32	4-9	.444	3-8	.375	0-0	.000	1	1	2	4.7	3	2	2	0	3	11	10.0	
TCU	02/17/16	*	31	3-11	.273	1-6	.167	1-2	.500	0	0	0	4.5	2	0	2	0	1	8	9.9	
OKLAHOMA	02/20/16	*	35	2-12	.167	2-10	.200	0-0	.000	1	4	5	4.5	2	1	3	1	1	6	9.8	
at Oklahoma State	02-24-16	*	32	2-5	.400	1-2	.500	0-0	.000	2	2	4	4.5	3	5	2	0	2	5	9.6	
Totals			26	881	84-266	.316	41-148	.277	50-62	.806	23	98	121	4.5	60	40	55	10	36	259	9.6

Games played: 27
Minutes/game: 32.6
Points/game: 9.6
FG Pct: 31.6
3FG Pct: 27.7
FT Pct: 80.6

Rebounds/game: 4.5
Assists/game: 1.5
Turnovers/game: 2.0
Assist/turnover ratio: 0.7
Steals/game: 1.3
Blocks/game: 0.4

2015-16 PLAYER GAME-BY-GAME

#55 Johnson, Tyler

Opponent	Date	qs	min	Total		3-Pointers		Free throws		Rebounds				pf	a	t/o	blk	stl	pts	avg
				fg-fga	pct	3fg-fga	pct	ft-fa	pct	off	def	tot	avg							
TEXAS SOUTHERN	11/15/15		15	3-6	.500	0-0	.000	0-1	.000	1	4	5	5.0	3	0	1	3	0	6	6.0
MEMPHIS	11/19/15		17	3-6	.500	0-0	.000	0-0	.000	4	6	10	7.5	1	1	0	1	1	6	6.0
at Arizona	11/23/15		7	1-4	.250	0-0	.000	0-0	.000	2	1	3	6.0	1	0	1	0	0	2	4.7
vs NIU	11/27/15		14	4-8	.500	0-0	.000	0-0	.000	1	2	3	5.3	1	0	0	3	2	8	5.5
at SMU	11/28/15		8	1-3	.333	0-0	.000	0-0	.000	0	3	3	4.8	3	0	2	1	0	2	4.8
CREIGHTON	12/02/15		12	4-6	.667	0-0	.000	0-0	.000	0	4	4	4.7	2	0	0	2	0	8	5.3
ST. JOHN'S	12/06/15		12	1-2	.500	0-0	.000	0-0	.000	1	1	2	4.3	1	0	0	0	0	2	4.9
UMKC	12/10/15		19	3-3	1.000	0-0	.000	0-2	.000	1	5	6	4.5	2	1	1	0	0	6	5.0
NAVY	12/13/15	*	11	2-3	.667	0-0	.000	0-0	.000	0	1	1	4.1	0	0	1	1	1	4	4.9
WASHINGTON STATE	12/20/15		10	0-1	.000	0-0	.000	1-2	.500	1	1	2	3.9	2	0	1	1	0	1	4.5
ORAL ROBERTS	12/22/15		8	2-3	.667	0-0	.000	0-0	.000	1	2	3	3.8	4	0	2	0	0	4	4.5
at Oklahoma	12/30/15		19	4-5	.800	0-0	.000	0-0	.000	0	4	4	3.8	3	0	1	0	1	8	4.8
WEST VIRGINIA	01/03/16		18	1-2	.500	0-0	.000	0-0	.000	0	3	3	3.8	2	0	1	0	1	2	4.5
BAYLOR	01/06/16		15	0-2	.000	0-0	.000	0-2	.000	1	1	2	3.6	1	0	3	0	2	0	4.2
at Iowa State	01-09-16		17	2-4	.500	0-0	.000	0-0	.000	0	1	1	3.5	2	3	2	1	0	4	4.2
TEXAS	01/13/15		22	1-1	1.000	0-0	.000	0-0	.000	1	1	2	3.4	3	0	0	1	0	2	4.1
at West Virginia	1-16-16	*	23	1-1	1.000	0-0	.000	0-0	.000	1	1	2	3.3	3	1	2	3	0	2	3.9
KANSAS STATE	01/20/16		24	3-7	.429	0-0	.000	2-3	.667	1	3	4	3.3	1	1	0	1	0	8	4.2
OKLAHOMA STATE	01/24/16	*	23	4-6	.667	0-0	.000	1-2	.500	2	2	4	3.4	3	0	1	0	1	9	4.4
at Texas	1/27/16		11	1-3	.333	0-0	.000	0-0	.000	1	2	3	3.4	2	0	1	0	0	2	4.3
at Texas Tech	1-30-16		21	6-9	.667	0-0	.000	0-0	.000	1	2	3	3.3	4	0	1	1	0	12	4.7
IOWA STATE	02/02/16		22	1-3	.333	0-0	.000	0-0	.000	0	3	3	3.3	4	1	3	3	0	2	4.5
at Baylor	02/06/16		16	1-2	.500	0-0	.000	0-0	.000	1	3	4	3.3	4	0	0	0	0	2	4.4
at Kansas State	2/13/16		21	4-9	.444	0-0	.000	2-3	.667	0	4	4	3.4	3	0	3	0	2	10	4.7
TCU	02/17/16		18	0-2	.000	0-0	.000	0-0	.000	0	5	5	3.4	2	1	3	1	1	0	4.5
OKLAHOMA	02/20/16		24	1-5	.200	0-0	.000	0-0	.000	3	3	6	3.5	4	1	1	0	2	2	4.4
at Oklahoma State	02-24-16		24	5-9	.556	0-0	.000	1-2	.500	1	0	1	3.4	0	0	1	0	0	11	4.6
Totals		3	451	59-115	.513	0-0	.000	7-17	.412	25	68	93	3.4	61	10	32	23	14	125	4.6

Games played: 27
Minutes/game: 16.7
Points/game: 4.6
FG Pct: 51.3
FT Pct: 41.2

Rebounds/game: 3.4
Assists/game: 0.4
Turnovers/game: 1.2
Assist/turnover ratio: 0.3
Steals/game: 0.5
Blocks/game: 0.9

2015-16 BOX SCORES

Official Basketball Box Score -- Game Totals -- Final Statistics

KU vs SMU
11/28/15 5:13 pm at Dallas, Texas

KU 64 • 3-2

#	Player	Total			3-Ptr			Rebounds			PF	TP	A	TO	Blk	Stl	Min
		FG-FGA	FG-FGA	FT-FTA	FG-FGA	FG-FGA	FT-FTA	Off	Def	Tot							
04	Brown, Jada	f	0-5	0-1	0-0	4	1	5	4	0	0	4	0	0	0	14	
25	ManningAllen, Caelynn	f	4-6	0-0	6-8	2	2	4	4	14	0	3	3	3	24		
03	Aldridge, Lauren	g	3-10	1-5	1-2	1	2	3	3	8	2	2	0	2	38		
15	Robertson, Aisia	g	3-8	0-2	1-2	3	3	6	5	7	5	4	0	2	27		
33	Kopatich, Kylee	g	3-8	2-6	2-2	1	5	6	4	10	1	2	1	0	32		
01	Lott, Chelsea	g	1-2	0-0	0-0	1	0	1	1	2	0	2	1	0	8		
12	O'Neal, Timeka	g	1-3	1-2	0-0	0	2	2	2	3	0	2	0	0	14		
20	Christopher, Jayde	g	0-2	0-0	1-2	0	0	0	0	1	1	0	0	0	6		
22	Cheadle, Chayla	g	7-14	0-4	3-3	4	3	7	5	17	2	4	0	2	29		
55	Johnson, Tyler	g	1-3	0-0	0-0	0	3	3	2	0	2	1	0	0	8		
Team						4	0	4									
Totals			23-61	4-20	14-19	20	21	41	31	64	11	25	6	9	200		
FG % 1st Half:		9-26	34.6%	2nd half:	14-35	40.0%	Game:		23-61	37.7%	Deadball						
3FG % 1st Half:		2-7	28.6%	2nd half:	2-13	15.4%	Game:		4-20	20.0%	Rebounds						
FT % 1st Half:		4-6	66.7%	2nd half:	10-13	76.9%	Game:		14-19	73.7%	4						

SMU 73 • 3-2

#	Player	Total			3-Ptr			Rebounds			PF	TP	A	TO	Blk	Stl	Min
		FG-FGA	FG-FGA	FT-FTA	FG-FGA	FG-FGA	FT-FTA	Off	Def	Tot							
10	FROLING, Alicia	f	2-7	0-4	6-6	3	4	7	3	10	0	4	2	0	35		
15	COLLINS, Stephanie	f	5-8	0-0	2-3	1	2	3	4	12	0	2	3	1	18		
02	ADAMS, McKenzie	g	7-15	4-9	6-6	2	2	4	1	24	3	4	0	1	34		
03	WILKINS, Gabrielle	g	3-8	0-2	5-6	1	3	4	3	11	3	3	0	1	27		
12	BOLTON, Morgan	g	0-2	0-2	6-6	0	1	1	2	6	5	2	0	2	27		
04	REESE, Mikayla	g	0-3	0-2	0-0	0	0	0	1	0	1	1	0	1	10		
20	THOMAS, Daija	g	1-4	0-0	3-4	1	4	5	2	5	1	1	1	1	17		
24	MICKENS, Kamray	g	0-0	0-0	2-2	0	0	0	0	2	0	0	0	0	3		
33	GIBSON, Ashley	g	1-5	1-5	0-2	4	1	5	1	3	0	2	1	2	29		
Team						1	2	3									
Totals			19-52	5-24	30-35	13	19	32	17	73	13	19	7	9	200		
FG % 1st Half:		11-24	45.8%	2nd half:	8-28	28.6%	Game:		19-52	36.5%	Deadball						
3FG % 1st Half:		4-11	36.4%	2nd half:	1-13	7.7%	Game:		5-24	20.8%	Rebounds						
FT % 1st Half:		17-21	81.0%	2nd half:	13-14	92.9%	Game:		30-35	85.7%	4						

Officials: Norma Jones, Tim Daley, Michael McConnell
Technical fouls: KU-None, SMU-None.
Attendance: 782
SMU Thanksgiving Classic

Score by periods	1st	2nd	3rd	4th	Total
KU	10	14	21	19	64
SMU	22	21	12	18	73

Last FG - KU 4th-00:07, SMU 4th-00:46.
Largest lead - KU None, SMU by 20 2nd-05:06.
KU led for 00:00, SMU led for 33:34, Game was tied for 00:26.

Score tied - 1 time.
Lead changed - 0 times.

Official Basketball Box Score -- Game Totals -- Final Statistics

Creighton vs Kansas
12/02/15 7:05 pm at Lawrence, Kan. (Allen Fieldhouse)

Creighton 54 • 4-3

#	Player	Total			3-Ptr			Rebounds			PF	TP	A	TO	Blk	Stl	Min
		FG-FGA	FG-FGA	FT-FTA	FG-FGA	FG-FGA	FT-FTA	Off	Def	Tot							
11	NORBY, Bailey	f	1-2	0-0	0-0	0	3	3	1	2	0	0	0	0	13		
45	FABER, Audrey	f	3-9	2-4	2-2	0	6	6	2	10	0	3	1	0	32		
01	OWENS, Jade	g	3-5	2-2	0-0	1	3	4	2	8	1	5	1	0	27		
03	MCGRORY, MC	g	5-9	2-2	1-2	0	4	4	3	13	0	1	0	1	25		
14	LAMBERTY, Sydney	g	1-9	1-3	0-0	0	3	3	2	3	4	2	1	1	24		
02	MELLMAN, Myah	g	1-3	1-0	0-0	0	0	0	1	3	2	1	0	0	8		
04	RISCHARD, Aimee	g	1-2	1-1	0-0	1	0	1	0	3	0	1	0	0	3		
12	WORKS, Lauren	g	1-5	1-3	2-2	4	2	6	0	5	2	2	0	1	31		
20	LEYTEM, Tessa	g	1-4	1-3	0-0	0	0	0	0	3	0	0	0	0	5		
21	ELGER, Olivia	g	0-3	0-2	0-0	0	0	0	1	0	1	0	0	0	9		
33	BROWN, Kylie	g	2-3	0-0	0-0	3	1	4	1	4	2	0	0	0	15		
40	GREENE, Ali	g	0-1	0-0	0-0	1	1	2	0	1	1	0	0	0	8		
Team						2	3	5									
Totals			19-55	11-23	5-6	12	26	38	13	54	12	18	3	3	200		
FG % 1st Half:		8-27	29.6%	2nd half:	11-28	39.3%	Game:		26-55	34.5%	Deadball						
3FG % 1st Half:		6-12	50.0%	2nd half:	5-11	45.5%	Game:		11-23	47.8%	Rebounds						
FT % 1st Half:		5-6	83.3%	2nd half:	0-0	0.0%	Game:		5-6	83.3%	1						

Kansas 67 • 4-2

#	Player	Total			3-Ptr			Rebounds			PF	TP	A	TO	Blk	Stl	Min
		FG-FGA	FG-FGA	FT-FTA	FG-FGA	FG-FGA	FT-FTA	Off	Def	Tot							
25	ManningAllen, Caelynn	f	3-6	0-0	2-2	2	5	7	1	8	1	2	0	0	28		
03	Aldridge, Lauren	g	7-14	4-9	0-0	0	1	1	0	18	3	3	0	0	33		
15	Robertson, Aisia	g	1-10	0-3	1-2	0	3	3	1	3	0	1	0	1	16		
22	Cheadle, Chayla	g	2-6	1-3	0-0	0	0	0	4	5	2	0	0	1	23		
33	Kopatich, Kylee	g	5-8	3-3	2-2	2	5	7	1	15	1	1	1	4	30		
04	Brown, Jada	g	0-1	0-1	0-0	1	2	3	1	0	1	1	1	1	24		
12	O'Neal, Timeka	g	3-3	0-0	2-2	0	1	1	0	8	0	0	0	0	16		
20	Christopher, Jayde	g	1-3	0-0	0-0	0	2	2	0	4	1	0	0	0	18		
55	Johnson, Tyler	g	4-6	0-0	0-0	0	4	4	2	8	0	0	2	0	12		
Team						1	1	2									
Totals			26-57	8-19	7-8	6	24	30	10	67	12	9	4	7	200		
FG % 1st Half:		12-29	41.4%	2nd half:	14-28	50.0%	Game:		26-57	45.6%	Deadball						
3FG % 1st Half:		4-11	36.4%	2nd half:	4-8	50.0%	Game:		8-19	42.1%	Rebounds						
FT % 1st Half:		2-2	100.0%	2nd half:	5-6	83.3%	Game:		7-8	87.5%	0						

Officials: Lisa Jones, Michael McConnell, Bill Larence
Technical fouls: Creighton-None, Kansas-None.
Attendance: 1753

Score by periods	1st	2nd	3rd	4th	Total
Creighton	19	8	14	13	54
Kansas	10	20	26	11	67

Last FG - CU 4th-00:21, KU 4th-02:17.
Largest lead - CU by 12 2nd-08:26, KU by 19 4th-02:17.
CU led for 14:09, KU led for 23:44, Game was tied for 02:07.

Score tied - 3 times.
Lead changed - 2 times.

Official Basketball Box Score -- Game Totals -- Final Statistics

St. John's vs Kansas
12/06/15 2:05 p.m. at Lawrence, Kan. (Allen Fieldhouse)

St. John's 86 • 6-1

#	Player	Total			3-Ptr			Rebounds			PF	TP	A	TO	Blk	Stl	Min
		FG-FGA	FG-FGA	FT-FTA	FG-FGA	FG-FGA	FT-FTA	Off	Def	Tot							
33	UDOBI, Sandra	f	0-0	0-0	0-0	0	2	2	1	0	1	1	0	0	21		
15	LITTLETON, Imani	f	3-6	0-0	0-0	3	3	6	3	6	0	1	0	1	20		
03	HANDFORD, Alivyah	g	16-25	1-1	0-0	0	5	5	2	33	5	3	1	4	34		
04	LEWIS, Aaliyah	g	2-4	0-0	0-1	1	1	2	3	4	5	3	0	3	36		
15	GRANT, Danaejah	g	10-17	2-4	4-4	1	1	2	1	26	2	1	0	4	37		
01	ALEXANDER, Tamesha	g	1-1	0-0	1-1	1	0	1	1	3	0	2	0	0	4		
13	SIMMONS, Crystal	g	0-0	0-0	0-0	0	0	0	0	0	0	1	1	0	5		
20	WELLER, Akina	g	2-5	0-2	0-0	0	2	2	0	4	0	0	0	0	19		
23	AGUSTUS, Jordan	g	0-0	0-0	0-0	0	0	0	1	0	0	1	0	0	3		
24	WALKER, Jade	g	3-7	0-0	4-4	3	5	8	3	10	1	0	1	0	17		
Team						2	1	3									
Totals			37-65	3-7	9-10	11	20	31	15	86	14	13	4	12	200		
FG % 1st Half:		20-35	57.1%	2nd half:	17-30	56.7%	Game:		37-65	56.9%	Deadball						
3FG % 1st Half:		0-1	0.0%	2nd half:	3-6	50.0%	Game:		3-7	42.9%	Rebounds						
FT % 1st Half:		6-7	85.7%	2nd half:	3-3	100.0%	Game:		9-10	90.0%	1						

Kansas 71 • 4-3

#	Player	Total			3-Ptr			Rebounds			PF	TP	A	TO	Blk	Stl	Min
		FG-FGA	FG-FGA	FT-FTA	FG-FGA	FG-FGA	FT-FTA	Off	Def	Tot							
25	ManningAllen, Caelynn	f	5-7	0-0	5-9	2	3	5	2	15	0	4	2	0	28		
03	Aldridge, Lauren	g	4-11	1-5	4-4	0	0	0	0	13	2	4	0	0	35		
15	Robertson, Aisia	g	2-6	1-3	2-2	1	4	5	2	7	2	1	0	2	15		
22	Cheadle, Chayla	g	2-6	1-3	1-2	1	2	3	3	6	2	1	1	2	28		
33	Kopatich, Kylee	g	4-7	2-5	0-0	1	6	7	0	10	3	0	0	1	37		
04	Brown, Jada	g	0-0	0-0	0-0	0	0	0	1	0	1	4	0	0	10		
12	O'Neal, Timeka	g	3-5	2-2	1-2	0	0	0	3	9	1	2	0	1	14		
20	Christopher, Jayde	g	3-5	1-1	2-4	0	1	1	1	9	3	2	0	1	21		
55	Johnson																

2015-16 BOX SCORES

Official Basketball Box Score -- Game Totals -- Final Statistics NAVY vs Kansas 12/13/15 1:05 p.m. at Lawrence, Kan. (Allen Fieldhouse)

NAVY 54 • 5-5

##	Player	Total			3-Ptr			Rebounds			PF	TP	A	TO	Blk	Stl	Min
		FG-FGA	FG-FGA	FT-FTA	FG-FGA	FG-FGA	FT-FTA	Off	Def	Tot							
12	Curtis, Peri	f	0-5	0-0	0-0	1	3	4	1	0	1	2	0	0	0	29	
25	Kennedy, Ashanti	f	4-13	0-3	0-0	2	2	4	0	8	1	0	0	1	35		
01	Dunham, Taylor	g	7-15	6-13	4-6	1	5	6	3	24	3	6	0	0	39		
05	Condie, Sarita	g	4-17	2-8	0-0	0	7	7	3	10	1	3	0	3	38		
21	Swett, Justice	g	0-4	0-0	0-0	7	2	9	5	0	2	0	1	3	37		
04	Poblarp, Danielle	g	0-1	0-0	0-0	0	0	0	0	0	0	0	0	0	0		
15	Roach, Bianca	g	2-4	1-1	3-3	0	2	2	4	8	0	4	0	1	31		
55	Unger, Haley	g	2-4	0-0	0-0	1	2	3	3	4	0	1	1	0	16		
Team						3	2	5									
Totals			19-63	9-25	7-9	15	25	40	19	54	8	16	2	8	225		
FG % 1st Half:		12-31	38.7%	2nd half:	7-29	24.1%	OT:	0-3	0.0%	Game:	19-63	30.2%	Deadball				
3FG % 1st Half:		7-15	46.7%	2nd half:	2-8	25.0%	OT:	0-2	0.0%	Game:	9-25	36.0%	Rebounds				
FT % 1st Half:		3-3	100.0	2nd half:	2-2	100.0	OT:	2-4	50.0%	Game:	7-9	77.8%	0				

Kansas 61 • 5-4

##	Player	Total			3-Ptr			Rebounds			PF	TP	A	TO	Blk	Stl	Min
		FG-FGA	FG-FGA	FT-FTA	FG-FGA	FG-FGA	FT-FTA	Off	Def	Tot							
04	Brown, Jada	f	3-6	0-0	1-1	4	4	8	0	7	0	3	1	1	28		
55	Johnson, Tyler	f	2-3	0-0	0-0	0	1	1	0	4	0	1	1	1	11		
03	Aldridge, Lauren	g	6-12	3-7	4-4	0	3	3	1	19	1	2	0	0	44		
20	Christopher, Jayde	g	1-1	0-0	2-2	0	2	2	0	4	2	1	0	1	18		
33	Kopatich, Kylee	g	4-16	1-10	5-6	0	5	5	3	14	3	1	0	1	45		
12	O'Neal, Timeka	g	0-3	0-3	0-0	0	0	0	5	0	1	0	0	0	9		
15	Robertson, Aisia	g	0-2	0-0	1-2	1	6	7	1	2	4	1	3	19			
22	Cheadle, Chayla	g	1-6	0-1	0-0	0	1	1	1	2	1	0	0	0	19		
55	ManningAllen, Caelynn	g	5-8	0-0	0-0	3	8	11	1	10	0	4	1	2	32		
Team						3	1	4									
Totals			22-57	4-21	13-15	11	31	42	12	61	10	16	4	9	225		
FG % 1st Half:		10-26	38.5%	2nd half:	10-26	38.5%	OT:	2-5	40.0%	Game:	19-63	30.2%	Deadball				
3FG % 1st Half:		1-10	10.0%	2nd half:	3-10	30.0%	OT:	0-1	0.0%	Game:	4-21	19.0%	Rebounds				
FT % 1st Half:		1-1	100.0	2nd half:	7-8	87.5%	OT:	5-6	83.3%	Game:	13-15	86.7%	1				

Officials: Doug Knight, Bryan Enterline, Katie Lukanich
Technical fouls: NAVY-None. Kansas-None.
Attendance: 2032
Navy 21 J. Swett fouled out with 1:55 remaining in OT.
KU 12 T. O'Neal fouled out with 1:33 remaining in OT.

Score by periods	1st	2nd	3rd	4th	OT	Total
NAVY	21	13	11	7	2	54
Kansas	13	9	17	13	9	61

Last FG - NAVY 4th-02:45, KU 0T-01:08.
Largest lead - NAVY by 19 2nd-04:18, KU by 7 0T-00:30.
NAVY led for 33:00. KU led for 09:13. Game was tied for 02:47.

Score tied - 2 times.
Lead changed - 2 times.

Official Basketball Box Score -- Game Totals -- Final Statistics Washington State vs Kansas 12/20/15 7:05 at Allen Fieldhouse

Washington State 66 • 9-2

##	Player	Total			3-Ptr			Rebounds			PF	TP	A	TO	Blk	Stl	Min
		FG-FGA	FG-FGA	FT-FTA	FG-FGA	FG-FGA	FT-FTA	Off	Def	Tot							
04	Brown, Louise	f	2-2	2-2	0-0	0	2	2	3	6	1	1	1	2	22		
45	Hristova, Borislava	f	3-6	0-1	0-0	0	2	2	4	6	1	4	0	0	13		
24	Blanaru, Bianca	c	1-4	0-0	0-0	2	2	4	1	2	0	0	1	0	12		
01	Hailey, Caila	g	2-6	0-0	3-4	1	0	1	2	7	1	1	1	0	17		
11	Awa, Dawnyelle	g	8-11	3-3	0-0	1	3	4	2	19	4	2	0	1	32		
12	Edmondson, Taylor	g	3-6	2-3	4-5	1	5	6	1	12	4	0	0	1	30		
20	Kostourkova, Maria	g	1-3	0-0	1-2	0	4	4	3	2	2	0	1	22			
21	McClure, Nike	g	0-0	0-0	0-0	0	4	4	2	0	1	1	0	6			
22	Pavlopoulou, Pinelopi	g	0-2	0-1	0-0	0	1	1	2	0	1	2	0	8			
27	Swedlund, Alexys	g	2-7	2-5	0-2	0	1	1	6	1	2	0	0	19			
34	Cooks, Mariah	g	2-6	0-1	1-2	2	3	5	0	5	0	0	1	2	19		
Team						2	2	4									
Totals			24-53	9-16	9-15	9	29	38	22	66	15	15	5	7	200		
FG % 1st Half:		12-29	41.4%	2nd half:	12-24	50.0%	Game:	24-53	45.3%	Deadball							
3FG % 1st Half:		3-8	37.5%	2nd half:	6-8	75.0%	Game:	9-16	56.3%	Rebounds							
FT % 1st Half:		3-7	42.9%	2nd half:	6-8	75.0%	Game:	9-15	60.0%	3							

Kansas 53 • 5-5

##	Player	Total			3-Ptr			Rebounds			PF	TP	A	TO	Blk	Stl	Min
		FG-FGA	FG-FGA	FT-FTA	FG-FGA	FG-FGA	FT-FTA	Off	Def	Tot							
04	Brown, Jada	f	3-5	0-0	2-6	4	1	5	1	8	1	1	0	0	24		
25	ManningAllen, Caelynn	f	3-5	0-0	4-6	2	5	7	1	10	0	1	3	0	30		
03	Aldridge, Lauren	g	4-13	4-11	1-2	0	1	1	13	0	1	0	3	37			
15	Robertson, Aisia	g	1-4	0-0	0-0	0	4	4	2	1	3	0	0	22			
33	Kopatich, Kylee	g	2-12	0-8	7-10	1	2	3	2	11	0	4	0	2	34		
12	O'Neal, Timeka	g	2-6	1-4	0-0	0	0	0	1	5	2	2	0	15			
20	Christopher, Jayde	g	1-3	1-1	0-0	0	3	3	0	3	2	1	0	12			
22	Cheadle, Chayla	g	0-2	0-1	0-0	0	1	1	2	0	2	0	0	16			
55	Johnson, Tyler	g	0-1	0-0	1-2	1	1	2	1	0	1	1	0	10			
Team						4	5	9									
Totals			16-51	6-25	15-26	12	23	35	14	53	8	15	4	8	200		
FG % 1st Half:		7-22	31.8%	2nd half:	9-29	31.0%	Game:	16-51	31.4%	Deadball							
3FG % 1st Half:		3-10	30.0%	2nd half:	3-15	20.0%	Game:	6-25	24.0%	Rebounds							
FT % 1st Half:		10-16	62.5%	2nd half:	5-10	50.0%	Game:	15-26	57.7%	5							

Officials: Michael Price, Lisa Jones and Nick Marshall
Technical fouls: Washington State-None. Kansas-None.
Attendance: 2184

Score by periods	1st	2nd	3rd	4th	Total
Washington State	12	18	14	22	66
Kansas	11	16	14	12	53

Last FG - WSU 4th-00:31, KU 4th-02:12.
Largest lead - WSU by 13 4th-02:42, KU by 3 1st-09:15.
WSU led for 31:35. KU led for 04:52. Game was tied for 03:33.

Score tied - 4 times.
Lead changed - 3 times.

Official Basketball Box Score -- Game Totals -- Final Statistics Oral Roberts vs Kansas 12/22/15 7:05 at Allen Fieldhouse

Oral Roberts 70 • 3-9

##	Player	Total			3-Ptr			Rebounds			PF	TP	A	TO	Blk	Stl	Min
		FG-FGA	FG-FGA	FT-FTA	FG-FGA	FG-FGA	FT-FTA	Off	Def	Tot							
30	Blair Bryce	f	2-4	0-0	0-2	2	9	11	5	4	0	1	0	0	29		
44	Maria Martiane	f	2-6	0-2	1-2	0	2	2	2	5	2	1	3	31			
01	Kaylan Mayberry	g	9-17	5-8	2-6	0	1	1	1	25	2	4	0	1	34		
02	Jordan Doyle	g	5-13	1-5	3-6	1	2	3	1	14	3	0	0	1	37		
05	Bria Pitts	g	5-13	4-10	0-0	2	5	7	3	14	1	2	1	2	32		
04	Esther Udoumoh	g	0-0	0-0	0-0	0	0	0	0	0	0	0	0	0	2		
12	Dorothy Balla	g	0-2	0-1	0-0	0	0	0	2	0	1	0	0	1	16		
15	Faith Ihim	g	3-3	0-0	2-6	1	2	3	1	8	0	0	0	1	17		
23	Ashley Beatty	g	0-0	0-0	0-0	1	0	1	0	0	0	0	0	0	2		
Team						2	5	7									
Totals			26-58	10-26	8-22	9	26	35	15	70	13	9	2	9	200		
FG % 1st Half:		13-28	46.4%	2nd half:	13-30	43.3%	Game:	26-58	44.8%	Deadball							
3FG % 1st Half:		4-12	33.3%	2nd half:	6-14	42.9%	Game:	10-26	38.5%	Rebounds							
FT % 1st Half:		3-6	50.0%	2nd half:	5-16	31.3%	Game:	8-22	36.4%	6							

Kansas 63 • 5-6

##	Player	Total			3-Ptr			Rebounds			PF	TP	A	TO	Blk	Stl	Min
		FG-FGA	FG-FGA	FT-FTA	FG-FGA	FG-FGA	FT-FTA	Off	Def	Tot							
04	Brown, Jada	f	4-9	0-2	0-2	3											

2015-16 BOX SCORES

Official Basketball Box Score -- Game Totals -- Final Statistics West Virginia vs Kansas 01/03/16 2:05 pm at Lawrence, Kan. (Allen Fieldhouse)

West Virginia 65 • 12-3, 1-1 Big 12

#	Player	Total			3-Ptr			Rebounds			PF	TP	A	TO	Blk	Stl	Min
		FG-FGA	FG-FGA	FT-FTA	Off	Def	Tot	Off	Def	Tot							
32	Roberson, Arielle	f	0-4	0-1	0-0	1	6	7	2	0	3	3	2	6	36		
15	Montgomery, Lanay	c	3-5	0-0	2-2	3	3	6	3	8	0	2	4	1	19		
12	Ray, Chania	g	1-6	1-3	1-3	2	2	4	2	4	3	2	0	0	18		
22	Pardee, Katrina	g	4-5	1-2	0-0	2	2	4	0	9	2	0	0	1	15		
23	Holmes, Bria	g	5-11	1-4	2-6	0	2	2	0	13	3	2	1	0	34		
02	Brewer, Alexis	g	2-3	2-3	0-0	0	0	0	2	6	1	0	0	0	14		
05	Martin, Tynice	g	1-6	0-3	0-0	0	1	1	0	2	1	1	0	1	18		
20	Rhodes, Desiree	g	2-3	1-1	0-0	1	3	4	0	5	0	0	0	4	21		
21	Morton, Jessica	g	7-10	3-3	1-2	0	0	0	2	18	0	2	1	0	22		
24	Martin, Anja	g	0-0	0-0	0-0	0	0	0	1	0	0	0	0	0	3		
	Team					0	0	0			2						
	Totals		25-53	9-20	6-13	9	19	28	12	65	13	14	8	14	200		

FG % 1st Half: 15-32 46.9% 2nd half: 10-21 47.6% Game: 25-53 47.2%
 3FG % 1st Half: 6-12 50.0% 2nd half: 3-8 37.5% Game: 9-20 45.0%
 FT % 1st Half: 0-1 0.0% 2nd half: 6-12 50.0% Game: 6-13 46.2%
 Deadball Rebounds: 4

Kansas 45 • 5-8, 0-2 Big 12

#	Player	Total			3-Ptr			Rebounds			PF	TP	A	TO	Blk	Stl	Min
		FG-FGA	FG-FGA	FT-FTA	Off	Def	Tot	Off	Def	Tot							
25	ManningAllen,Caelynn	f	3-10	0-0	1-1	1	3	4	2	7	2	4	1	1	29		
03	Aldridge, Lauren	g	5-10	3-6	3-4	0	4	4	1	16	0	4	0	1	32		
20	Christopher, Jayde	g	1-1	0-0	0-0	0	0	0	3	2	1	0	0	0	15		
22	Cheadle, Chayla	g	3-8	0-1	0-1	4	3	7	4	6	2	1	0	0	22		
33	Kopatich, Kylee	g	2-5	0-1	3-4	0	2	2	1	7	1	4	0	1	32		
04	Brown, Jada	g	1-3	0-0	0-0	0	0	0	1	2	2	2	0	1	12		
12	O'Neal, Timeka	g	0-2	0-0	0-0	1	2	3	0	0	0	1	0	0	15		
15	Robertson, Aisia	g	1-3	0-0	1-4	1	2	3	1	3	2	3	0	1	25		
55	Johnson, Tyler	g	1-2	0-0	0-0	0	3	3	2	2	0	1	0	1	18		
	Team					3	3	6									
	Totals		17-44	3-8	8-14	10	22	32	15	45	9	22	1	6	200		

FG % 1st Half: 7-25 28.0% 2nd half: 10-19 52.6% Game: 17-44 38.6%
 3FG % 1st Half: 2-6 33.3% 2nd half: 1-2 50.0% Game: 3-8 37.5%
 FT % 1st Half: 1-3 33.3% 2nd half: 7-11 63.6% Game: 8-14 57.1%
 Deadball Rebounds: 4

Officials: Brian Hall, Billy Smith, Maj Forsberg
 Technical fouls: West Virginia-None. Kansas-None.
 Attendance: 2758

Score by periods	1st	2nd	3rd	4th	Total
West Virginia	14	22	16	13	65
Kansas	10	7	10	18	45

Points	In	Off	2nd	Fast	Bench
WVU	30	21	7	12	31
KU	26	12	7	0	7

Last FG - WVU 4th-03:24, KU 4th-01:10.
 Largest lead - WVU by 28 4th-06:33, KU None.
 WVU led for 38:59. KU led for 00:00. Game was tied for 00:41.

Score tied - 0 times.
 Lead changed - 0 times.

Official Basketball Box Score -- Game Totals -- Final Statistics Baylor vs Kansas 01/06/16 7:05 p.m. at Lawrence, Kan. (Allen Fieldhouse)

Baylor 58 • 15-1, 2-1 Big 12

#	Player	Total			3-Ptr			Rebounds			PF	TP	A	TO	Blk	Stl	Min
		FG-FGA	FG-FGA	FT-FTA	Off	Def	Tot	Off	Def	Tot							
13	Davis, Nina	f	8-16	0-0	0-1	2	2	4	3	16	0	3	1	0	40		
02	Johnson, Niya	g	5-6	0-0	2-2	1	2	3	2	12	8	5	0	2	40		
04	Wallace, Kristy	g	4-10	0-3	1-1	1	5	6	3	9	3	4	0	1	37		
30	Jones, Alexis	g	5-7	2-3	0-0	0	6	6	1	12	2	6	0	2	33		
44	Higgins, Kristina	g	0-1	0-0	0-0	1	2	3	2	0	0	2	0	1	9		
03	Fuqua, Chardonae	g	0-1	0-0	0-0	0	0	0	0	0	0	0	0	0	1		
21	Brown, Kalani	g	1-1	0-0	0-0	0	0	0	1	2	0	0	0	0	10		
32	Mompremier, Beatrice	g	0-2	0-0	1-4	3	1	4	3	1	0	0	0	0	3		
55	Cave, Khadijah	g	2-7	0-0	2-4	4	7	11	3	6	0	0	2	0	27		
	Team					0	2	2									
	Totals		25-51	2-6	6-12	12	27	39	18	58	13	20	3	6	200		

FG % 1st Half: 13-25 52.0% 2nd half: 12-26 46.2% Game: 25-51 49.0%
 3FG % 1st Half: 1-3 33.3% 2nd half: 1-3 33.3% Game: 2-6 33.3%
 FT % 1st Half: 3-4 75.0% 2nd half: 3-8 37.5% Game: 6-12 50.0%
 Deadball Rebounds: 3

Kansas 40 • 5-9, 0-3 Big 12

#	Player	Total			3-Ptr			Rebounds			PF	TP	A	TO	Blk	Stl	Min
		FG-FGA	FG-FGA	FT-FTA	Off	Def	Tot	Off	Def	Tot							
25	ManningAllen,Caelynn	f	4-10	0-0	1-2	0	3	3	4	9	0	3	0	0	27		
03	Aldridge, Lauren	g	0-7	0-4	0-0	0	1	1	2	0	2	1	0	1	28		
15	Robertson, Aisia	g	2-5	0-0	2-2	0	4	3	6	1	5	1	1	2	25		
22	Cheadle, Chayla	g	2-7	1-3	7-8	3	3	6	1	12	1	1	1	0	30		
33	Kopatich, Kylee	g	3-6	1-4	0-0	0	1	1	0	7	1	1	0	2	31		
04	Brown, Jada	g	0-0	0-0	0-0	0	1	1	4	0	1	2	0	1	8		
12	O'Neal, Timeka	g	2-4	0-1	0-0	0	1	1	0	4	0	0	0	1	11		
20	Christopher, Jayde	g	0-0	0-0	2-6	0	2	2	2	0	2	0	1	1	25		
55	Johnson, Tyler	g	0-2	0-0	0-2	1	1	2	1	0	0	3	0	2	15		
	Team					0	0	0									
	Totals		13-41	2-12	12-20	4	17	21	17	40	6	18	2	10	200		

FG % 1st Half: 8-19 42.1% 2nd half: 5-22 22.7% Game: 13-41 31.7%
 3FG % 1st Half: 2-7 28.6% 2nd half: 0-5 0.0% Game: 2-12 16.7%
 FT % 1st Half: 4-8 50.0% 2nd half: 8-12 66.7% Game: 12-20 60.0%
 Deadball Rebounds: 5

Officials: Michael Price, Gina Cross, Metta Roberts
 Technical fouls: Baylor-None. Kansas-None.
 Attendance: 2109

Score by periods	1st	2nd	3rd	4th	Total
Baylor	17	13	20	8	58
Kansas	9	13	8	10	40

Points	In	Off	2nd	Fast	Bench
BU	32	18	5	8	9
KU	10	11	4	4	6

Last FG - BU 4th-02:17, KU 4th-00:19.
 Largest lead - BU by 23 3rd-03:06, KU by 1 1st-06:28.
 BU led for 36:36. KU led for 00:41. Game was tied for 02:43.

Score tied - 1 time.
 Lead changed - 2 times.

Official Basketball Box Score -- Game Totals -- Final Statistics Kansas vs Iowa State 01-09-16 7:05 p.m. at Hilton Coliseum - Ames, Iowa

Kansas 49 • 5-10, 0-4

#	Player	Total			3-Ptr			Rebounds			PF	TP	A	TO	Blk	Stl	Min
		FG-FGA	FG-FGA	FT-FTA	Off	Def	Tot	Off	Def	Tot							
03	Aldridge, Lauren	*	3-10	2-3	4-4	1	1	2	1	12	1	0	0	2	40		
15	Robertson, Aisia	*	2-5	0-1	0-0	0	6	6	4	4	0	2	0	1	21		
22	Cheadle, Chayla	*	3-9	1-2	1-3	1	2	3	5	8	1	2	0	0	20		
25	ManningAllen,Caelynn	*	4-8	0-0	0-0	3	3	6	5	8	1	2	3	0	23		
33	Kopatich, Kylee	*	2-8	2-3	0-0	0	7	7	3	6	3	1	0	0	36		
04	Brown, Jada	g	2-4	0-1	3-4	0	2	2	1	7	1	2	0	1	20		
12	O'Neal, Timeka	g	0-0	0-0	0-0	0	0	0	1	0	0	1	0	0	5		
20	Christopher, Jayde	g	0-4	0-1	0-0	2	1	3	1	0	2	3	0	1	18		
55	Johnson, Tyler	g	2-4	0-0	0-0	0	1	1	2	4	3	2	1	0	17		
	Team					1	0	1			2						
	Totals		18-52	5-11	8-11	8	23	31	23	49	12	17	4	5	200		

FG % 1st Half: 10-24 41.7% 2nd half: 8-28 28.6% Game: 18-52 34.6%
 3FG % 1st Half: 2-4 50.0% 2nd half: 3-7 42.9% Game: 5-11 45.5%
 FT % 1st Half: 3-4 75.0% 2nd half: 5-7 71.4% Game: 8-11 72.7%
 Deadball Rebounds: 1

Iowa State 65 • 11-4, 3-1

#	Player	Total			3-Ptr			Rebounds			PF	TP	A	TO	Blk	Stl	Min
		FG-FGA	FG-FGA	FT-FTA	Off	Def	Tot	Off	Def	Tot							
11	Buckley, Jadda	*	4-12	2-3	2-2	1	2	3	2	12	5	2	1	1	37		
12	Johnson, Seanna	*	3-7	0-0	4-4	5	5	10	3	10	4	4	1	1	36		
15	Blaskowsky, Nicole	*	4-9	3-7	0-0	0	5	5	3	11	1	2					

2015-16 BOX SCORES

Official Basketball Box Score -- Game Totals -- Final Statistics Kansas vs West Virginia 1-16-16 7:00 p.m. at WVU Coliseum, Morgantown, W.Va.

Kansas 35 • 5-12, 0-6

#	Player	Total			3-Ptr			Rebounds			PF	TP	A	TO	Blk	Stl	Min
		FG	FGA	FT	FTA	FG	FGA	FT	FTA	Off							
55	Johnson, Tyler	f	1-1	0-0	0-0	1	1	2	3	2	1	2	3	0	0	23	
03	Aldridge, Lauren	g	4-12	2-7	0-0	0	2	2	0	10	1	5	0	1	36		
12	O'Neal, Timeka	g	1-5	1-3	0-0	1	0	1	0	3	1	2	0	2	18		
22	Cheadle, Chayla	g	1-6	0-1	1-4	2	1	3	4	3	0	1	0	0	34		
33	Kopatich, Kylee	g	2-13	0-2	5-6	0	7	7	3	9	1	1	2	2	20		
04	Brown, Jada	g	0-4	0-0	0-0	1	0	1	3	0	0	1	0	0	19		
15	Robertson, Aisia	g	0-3	0-0	0-0	0	5	3	0	0	2	1	1	1	18		
20	Christopher, Jayde	g	0-2	0-0	2-2	0	0	0	0	2	0	2	0	1	15		
25	ManningAllen, Caelynn	g	3-6	0-0	0-0	6	2	8	4	6	0	3	2	0	17		
Team						2	3	5				4					
Totals			12-52	3-13	8-12	13	21	34	20	35	4	25	7	7	200		
FG % 1st Half: 5-24		20.8%	2nd half: 7-28		25.0%	Game: 12-52		23.1%	Deadball						Rebounds		
3FG % 1st Half: 2-10		20.0%	2nd half: 1-3		33.3%	Game: 3-13		23.1%	2								
FT % 1st Half: 2-6		33.3%	2nd half: 6-6		100.0%	Game: 8-12		66.7%									

West Virginia 72 • 15-4, 4-2

#	Player	Total			3-Ptr			Rebounds			PF	TP	A	TO	Blk	Stl	Min
		FG	FGA	FT	FTA	FG	FGA	FT	FTA	Off							
32	Roberson, Arielle	f	1-1	0-0	0-4	1	7	8	1	2	0	0	1	1	24		
15	Montgomery, Lanay	c	5-7	0-0	4-6	7	10	17	0	14	1	4	3	1	28		
12	Ray, Chania	g	1-3	0-1	1-2	1	1	2	1	3	4	2	0	0	20		
22	Pardee, Katrina	g	0-3	0-2	0-0	0	1	1	2	0	0	1	0	1	12		
23	Holmes, Bria	g	5-14	0-2	4-5	2	4	6	1	14	5	2	2	2	33		
02	Brewer, Alexis	g	2-5	1-4	0-0	1	1	2	1	5	1	0	0	2	13		
03	Seggie, Olivia	g	0-0	0-0	0-0	0	0	0	0	0	0	0	0	0	3		
05	Martin, Tynice	g	8-12	0-2	2-2	0	1	1	2	18	2	2	0	2	21		
11	Muldrow, Teana	g	4-9	0-3	2-4	0	1	1	1	10	0	0	2	0	21		
20	Rhodes, Desiree	g	0-0	0-0	1-2	0	0	0	2	1	1	0	0	0	5		
21	Morton, Jessica	g	2-8	1-3	0-0	1	1	2	2	5	0	2	2	0	17		
24	Martin, Anja	g	0-0	0-0	0-0	0	0	0	0	0	0	0	0	0	3		
Team						4	2	6									
Totals			28-62	2-17	14-25	17	29	46	13	72	14	14	10	9	200		
FG % 1st Half: 12-31		38.7%	2nd half: 16-31		51.6%	Game: 28-62		45.2%	Deadball						Rebounds		
3FG % 1st Half: 1-11		9.1%	2nd half: 1-6		16.7%	Game: 2-17		11.8%	7								
FT % 1st Half: 7-11		63.6%	2nd half: 7-14		50.0%	Game: 14-25		56.0%									

Officials: Dee Kantner, Beverly Roberts, Mark Zentz

Technical fouls: Kansas-None. West Virginia-None.

Attendance: 4006

Start Time: 7:05 End Time: 8:51

Score by periods	1st	2nd	3rd	4th	Total
Kansas	9	5	13	8	35
West Virginia	15	17	18	22	72

Last FG - KU 4th-04:42, WVU 4th-01:39.

Largest lead - KU by 31st-05:29, WVU by 37 4th-02:22.

KU led for 03:36. WVU led for 34:32. Game was tied for 01:31.

Points	In	Off	2nd	Fast	Bench
KU	Paint	T/O	Chance	Break	8
WVU	16	2	9	2	8
	44	21	13	12	39

Score tied - 2 times.

Lead changed - 4 times.

Official Basketball Box Score -- Game Totals -- Final Statistics Kansas State vs Kansas 01/20/16 7:01 p.m. at Lawrence, Kan. (Allen Fieldhouse)

Kansas State 59 • 13-5, 3-4 Big 12

#	Player	Total			3-Ptr			Rebounds			PF	TP	A	TO	Blk	Stl	Min
		FG	FGA	FT	FTA	FG	FGA	FT	FTA	Off							
01	Page, Kaylee	f	1-3	1-3	2-2	0	4	4	2	5	1	0	0	0	26		
22	Lewis, Breanna	c	10-16	0-0	3-4	2	11	13	3	23	1	5	7	1	28		
15	Deines, Megan	g	2-9	0-4	0-0	0	3	3	0	4	3	1	0	0	28		
24	Wesemann, Kindred	g	4-7	3-5	2-2	0	1	1	2	13	3	1	0	1	35		
50	Martin, Shaelyn	g	3-4	0-1	2-2	3	7	10	0	8	0	2	0	1	34		
00	Sheble, Jessica	g	1-4	0-1	0-0	0	1	1	2	2	0	1	0	1	6		
02	Young, Erica	g	0-2	0-0	0-2	1	1	2	0	0	0	0	1	0	6		
10	Goth, Kayla	g	0-0	0-0	0-0	0	1	1	0	0	0	3	0	0	19		
11	Taylor, Antoinette	g	1-1	0-0	0-0	0	0	0	1	2	0	2	0	0	5		
12	Thomson, Kelly	g	0-1	0-1	2-2	0	0	0	0	2	0	0	0	0	8		
20	Craig, Brianna	g	0-0	0-0	0-0	0	0	0	0	0	0	0	0	0	4		
23	Hammaker, Anna	g	0-0	0-0	0-0	0	0	0	0	0	0	0	0	0	1		
Team						0	3	3									
Totals			22-47	4-15	11-14	6	32	38	11	59	8	16	8	4	200		
FG % 1st Half: 10-26		38.5%	2nd half: 12-21		57.1%	Game: 22-47		46.8%	Deadball						Rebounds		
3FG % 1st Half: 3-10		30.0%	2nd half: 1-5		20.0%	Game: 4-15		26.7%	2								
FT % 1st Half: 4-7		57.1%	2nd half: 7-7		100.0%	Game: 11-14		78.6%									

Kansas 46 • 5-13, 0-7 Big 12

#	Player	Total			3-Ptr			Rebounds			PF	TP	A	TO	Blk	Stl	Min
		FG	FGA	FT	FTA	FG	FGA	FT	FTA	Off							
25	ManningAllen, Caelynn	f	0-4	0-0	0-0	1	2	3	3	0	0	4	0	1	16		
03	Aldridge, Lauren	g	1-8	1-6	2-2	2	0	2	2	5	3	1	0	1	40		
12	O'Neal, Timeka	g	3-7	3-7	0-0	0	3	3	1	9	1	1	0	0	22		
22	Cheadle, Chayla	g	2-10	1-5	3-5	3	0	3	1	8	3	1	0	3	23		
33	Kopatich, Kylee	g	2-8	2-6	0-0	1	6	7	3	6	1	1	0	1	38		
04	Brown, Jada	g	1-5	1-1	4-4	1	0	1	1	7	0	0	0	2	17		
15	Robertson, Aisia	g	1-5	1-5	0-0	0	2	2	1	3	1	3	0	0	11		
20	Christopher, Jayde	g	0-0	0-0	0-0	0	2	2	1	0	1	1	0	0	9		
55	Johnson, Tyler	g	3-7	0-0	2-3	1	3	4	1	8	1	0	1	0	24		
Team						1	2	3									
Totals			13-54	9-30	11-14	10	20	30	14	46	11	13	1	8	200		
FG % 1st Half: 3-22		13.6%	2nd half: 10-32		31.3%	Game: 13-54		24.1%	Deadball						Rebounds		
3FG % 1st Half: 1-10		10.0%	2nd half: 8-20		40.0%	Game: 9-30		30.0%	2								
FT % 1st Half: 6-9		66.7%	2nd half: 5-5		100.0%	Game: 11-14		78.6%									

Officials: Tina Napier, Felicia Grinter, Gina Cross

Technical fouls: Kansas State-None. Kansas-None.

Attendance: 2529

Score by periods	1st	2nd	3rd	4th	Total
Kansas State	11	16	16	16	59
Kansas	2	11	16	17	46

Last FG - KSU 4th-03:05, KU 4th-00:09.

Largest lead - KSU by 20 4th-03:05, KU None.

KSU led for 38:19. KU led for 00:00. Game was tied for 01:41.

Points	In	Off	2nd	Fast	Bench
KU	Paint	T/O	Chance	Break	8
KSU	34	9	8	2	6
	6	15	8	0	18

Score tied - 0 times.

Lead changed - 0 times.



Official Basketball Box Score -- Game Totals -- Final Statistics Oklahoma State vs Kansas 01/24/16 2:05 p.m. at Lawrence, Kan. (Allen Fieldhouse)

Oklahoma State 74 • 15-4, 5-3 Big 12

#	Player	Total			3-Ptr			Rebounds			PF	TP	A	TO	Blk	Stl	Min
		FG	FGA	FT	FTA	FG	FGA	FT	FTA	Off							
03	Coleman, Mandy	f	5-7	1-2	0-0	1	1	2	3	11	1	2	1	1	23		
54	Jensen, Kaylee	c	6-10	0-0	3-6	3	6	9	2	15	0	0	0	0	26		
22	Martin, Brittney	g	11-21	0-0	2-3	4	13	17	2	24	0	1	1	3	34		
23	Patton, Rodricka	g	1-4	0-3	0-0	1	1	2	1	2	13	7	0	2	35		
24	Wheeler, Karli	g	3-7	2-4	2-4												

2015-16 BOX SCORES

Official Basketball Box Score -- Game Totals -- Final Statistics Kansas vs Texas Tech 1-30-16 5:00 pm at Lubbock, TX (United Supermarkets Arena)

Kansas 44 • 5-16, 0-10

#	Player	Total			Rebounds			PF	TP	A	TO	Blk	Stl	Min
		FG-FGA	3-Ptr	FT-FTA	Off	Def	Tot							
25	ManningAllen,Caelynn	2-7	0-0	4-4	1	3	4	3	8	0	6	1	1	18
03	Aldridge, Lauren	1-13	1-9	0-0	1	2	3	2	3	5	3	0	1	38
15	Robertson, Aisia	2-7	0-0	0-0	0	3	3	4	4	2	3	0	1	21
22	Cheadle, Chayla	5-10	1-2	0-0	4	1	5	2	11	1	2	0	1	24
33	Kopatich, Kylee	1-7	1-3	0-0	1	3	4	3	3	1	2	1	3	35
04	Brown, Jada	1-2	0-0	1-1	1	8	9	3	3	0	1	1	0	18
12	O'Neal, Timeka	0-2	0-1	0-0	0	1	1	2	0	0	0	0	0	13
20	Christopher, Jayde	0-1	0-1	0-0	0	1	1	2	0	1	1	0	0	12
55	Johnson, Tyler	6-9	0-0	0-0	1	2	3	4	12	0	1	1	0	21
	Team				4	0	4			1				
	Totals	18-58	3-16	5-5	13	24	37	25	44	10	20	4	7	200

FG % 1st Half: 8-28 28.6% 2nd half: 10-30 33.3% Game: 18-58 31.0% Deadball Rebounds 1
 3FG % 1st Half: 0-7 0.0% 2nd half: 3-9 33.3% Game: 3-16 18.8%
 FT % 1st Half: 3-3 100.0 2nd half: 2-2 100.0 Game: 5-5 100.0

Texas Tech 54 • 11-10, 2-8

#	Player	Total			Rebounds			PF	TP	A	TO	Blk	Stl	Min
		FG-FGA	3-Ptr	FT-FTA	Off	Def	Tot							
35	Roe, Jamie	0-0	0-0	0-0	0	2	2	1	0	0	2	0	1	24
25	Grant, Leashja	1-4	0-0	1-2	1	3	4	3	3	1	5	1	0	22
02	CookTaylor, Ivonne	8-14	0-0	0-0	1	2	3	2	16	0	3	0	0	35
11	Brooks, Rayven	2-5	1-3	5-6	0	5	5	1	10	1	1	2	3	30
24	Dean, Japreece	4-13	2-5	11-12	2	6	8	0	21	4	4	1	0	36
04	Bowser, Ryan	0-2	0-1	0-0	0	3	3	2	0	1	2	0	0	20
30	Sanders, Zuri	1-2	0-0	0-0	0	2	2	0	2	0	0	0	0	10
32	Olabode, Dayo	1-4	0-2	0-0	2	1	3	2	2	0	2	1	1	23
42	McKenzie, Ionna	0-0	0-0	0-0	0	0	0	0	0	0	0	0	0	0+
	Team				0	2	2			1				
	Totals	17-44	3-11	17-20	6	26	32	11	54	7	20	5	4	200

FG % 1st Half: 10-22 45.5% 2nd half: 7-22 31.8% Game: 17-44 38.6% Deadball Rebounds 0
 3FG % 1st Half: 2-6 33.3% 2nd half: 1-5 20.0% Game: 3-11 27.3%
 FT % 1st Half: 5-6 83.3% 2nd half: 12-14 85.7% Game: 17-20 85.0%

Officials: Michael Price, Bob Trammell, Michael McConnell
 Technical fouls: Kansas-None. Texas Tech-None.
 Attendance: 3671

Score by periods	1st	2nd	3rd	4th	Total
Kansas	11	8	13	12	44
Texas Tech	17	10	15	12	54

Fast FG - KU 4th-00:11, TTU 4th-02:43.
 Largest lead - KU None, TTU by 13 4th-00:31.
 KU led for 00:00. TTU led for 38:22. Game was tied for 01:03.

Score tied - 0 times.
 Lead changed - 0 times.

Official Basketball Box Score -- Game Totals -- Final Statistics Iowa State vs Kansas 02/02/16 7:05 p.m. at Lawrence, Kan. (Allen Fieldhouse)

Iowa State 63 • 12-9,4-6 Big 12

#	Player	Total			Rebounds			PF	TP	A	TO	Blk	Stl	Min
		FG-FGA	3-Ptr	FT-FTA	Off	Def	Tot							
32	Burkhal, Meredith	4-8	0-0	3-4	2	10	12	2	11	0	3	1	1	33
11	Buckley, Jadda	4-10	1-2	5-8	1	0	1	2	14	11	2	0	2	38
12	Johnson, Seanna	7-15	1-4	5-6	3	2	5	2	20	2	6	0	2	39
15	Blaskowsky, Nicole	0-3	0-3	2-2	0	2	2	2	2	1	3	1	1	25
21	Carleton, Bridget	4-11	0-2	1-1	2	3	5	0	9	0	2	0	0	31
03	Durr, Emily	1-5	0-2	2-2	1	1	2	3	4	0	0	1	2	27
30	Ricketts, Claire	0-0	0-0	0-0	0	0	0	0	0	0	0	0	0	0+
34	Baier, Madison	1-1	0-0	1-2	2	0	2	0	3	0	0	0	0	7
	Team				2	3	5			1				
	Totals	21-53	2-13	19-25	13	21	34	11	63	14	17	3	8	200

FG % 1st Half: 7-26 26.9% 2nd half: 14-27 51.9% Game: 21-53 39.6% Deadball Rebounds 4
 3FG % 1st Half: 1-7 14.3% 2nd half: 1-6 16.7% Game: 2-13 15.4%
 FT % 1st Half: 3-7 42.9% 2nd half: 16-18 88.9% Game: 19-25 76.0%

Kansas 53 • 5-17,0-11 Big 12

#	Player	Total			Rebounds			PF	TP	A	TO	Blk	Stl	Min
		FG-FGA	3-Ptr	FT-FTA	Off	Def	Tot							
25	ManningAllen,Caelynn	2-4	0-0	2-4	1	2	3	3	6	0	4	1	2	12
03	Aldridge, Lauren	2-8	0-0	0-0	0	2	2	3	4	2	2	0	0	32
15	Robertson, Aisia	1-3	0-0	0-0	2	1	3	4	2	0	2	1	1	14
22	Cheadle, Chayla	3-9	1-3	0-0	1	3	4	3	7	2	5	0	2	27
33	Kopatich, Kylee	2-10	0-2	4-4	2	1	3	3	8	1	1	1	1	38
04	Brown, Jada	6-7	0-0	2-3	4	0	4	4	14	0	1	1	1	20
12	O'Neal, Timeka	2-4	2-3	0-0	0	1	1	1	6	0	2	0	0	20
20	Christopher, Jayde	2-6	0-2	0-0	0	1	1	1	4	2	3	1	1	15
55	Johnson, Tyler	1-3	0-0	0-0	0	3	3	4	2	1	3	3	0	22
	Team				3	7	10			1				
	Totals	21-54	3-10	8-11	13	21	34	26	53	8	24	8	8	200

FG % 1st Half: 12-26 46.2% 2nd half: 9-28 32.1% Game: 21-54 38.9% Deadball Rebounds 2
 3FG % 1st Half: 2-5 40.0% 2nd half: 1-5 20.0% Game: 3-10 30.0%
 FT % 1st Half: 2-3 66.7% 2nd half: 6-8 75.0% Game: 8-11 72.7%

Officials: Dee Kantner, Beverly Roberts, Amy Bonner
 Technical fouls: Iowa State-None. Kansas-None.
 Attendance: 2483

Score by periods	1st	2nd	3rd	4th	Total
Iowa State	13	5	25	20	63
Kansas	13	15	10	15	53

Fast FG - ISU 4th-03:22, KU 4th-00:45.
 Largest lead - ISU by 10 4th-03:22, KU by 10 2nd-00:25.
 ISU led for 18:44. KU led for 15:49. Game was tied for 04:57.

Score tied - 7 times.
 Lead changed - 5 times.

Official Basketball Box Score -- Game Totals -- Final Statistics Kansas vs Baylor 02/06/16 2:05 p.m. at Ferrell Center - Waco, Texas

Kansas 49 • 5-18(0-12)

#	Player	Total			Rebounds			PF	TP	A	TO	Blk	Stl	Min
		FG-FGA	3-Ptr	FT-FTA	Off	Def	Tot							
25	ManningAllen,Caelynn	1-5	0-0	0-0	1	2	3	4	2	0	5	0	0	21
03	Aldridge, Lauren	4-8	4-8	0-0	0	0	0	2	12	2	3	0	0	36
15	Robertson, Aisia	4-15	2-4	0-0	1	4	5	3	10	2	1	1	2	23
22	Cheadle, Chayla	1-3	1-2	0-0	1	1	2	2	3	1	3	0	1	17
33	Kopatich, Kylee	6-12	2-8	0-0	0	2	2	14	2	3	0	3	25	
01	Lott, Chelsea	0-0	0-0	0-0	0	0	0	2	0	1	0	0	3	
04	Brown, Jada	1-4	0-1	0-0	3	2	5	2	2	2	3	0	0	23
12	O'Neal, Timeka	1-6	1-5	1-2	0	0	0	1	4	1	1	0	1	15
20	Christopher, Jayde	0-5	0-1	0-0	0	0	0	1	0	3	3	0	0	21
55	Johnson, Tyler	1-2	0-0	0-0	1	3	4	4	2	0	0	0	0	16
	Team				2	1	3							
	Totals	19-60	10-29	1-2	9	15	24	23	49	13	23	1	7	200

FG % 1st Half: 7-26 26.9% 2nd half: 12-34 35.3% Game: 19-60 31.7% Deadball Rebounds 0
 3FG % 1st Half: 4-14 28.6% 2nd half: 6-15 40.0% Game: 10-29 34.5%
 FT % 1st Half: 0-0 0.0% 2nd half: 1-2 50.0% Game: 1-2 50.0%

Baylor 81 • 23-1(10-1) #4/4

#	Player	Total			Rebounds			PF	TP	A	TO	Blk	Stl	Min
		FG-FGA	3-Ptr	FT-FTA	Off	Def	Tot							
13	Davis, Nina	5-8	0-0	1-4	1	3	4	2	11	1	2	0	0	21
32	Mompremier, Beatrice	5-10	0-0	4-5	4	8	12	0	14	0	1	0	0	13
02	Johnson, Niya	2-3	0-0	1-1	0	4	4	0	5	7	1	0	2	27
04	Wallace, Kristy	1-2	1-2	2-2	1	2	3	2	5	6	7	0	2	28
30	Jones, Alexis	0-2	0-1	0-0	1	1	2	3	0	2	2	0	0	16
01	Cohen, Dekeiya	2-3	0-0	0-1	0	1	1	1	4	1	1	1	1	13
03	Fuqua, Chardonae	1-2	0-0	0-0	0	0	0	0	2	0	0	0	1	9
11	Szczepanski, Justis	0-0	0-0	0-0	0	2	2	1	0	0	1	1	1	9
12	Prince, Alexis	4-10	3-4	3-4	0	3	3	0	14	2	3	2	2	24
21	Brown, Kalani	8-12	0-0	2-2	6	1	7	0	18	0	2	1	3	13
44	Higgins, Kristina	0-1	0-0	2-4	2	4	6	0	2	3	1	0	0	15
55	Cave, Khadijah	3-3	0-0	0-0	0	2	2	1	6	0	1	0	0	12
	Team				0	2	2							
	Totals	31-56	4-7	15-23	15	33	48	10	81	22	22	5	12	200

2015-16 BOX SCORES

Official Basketball Box Score -- Game Totals -- Final Statistics Kansas vs Kansas State 2/13/16 7 p.m. at Bramlage Coliseum (Manhattan, Kan.)

Kansas 67 • 5-19, 0-13

#	Player	Total			3-Ptr			Rebounds			PF	TP	A	TO	Blk	Stl	Min
		FG-FGA	FG-FGA	FT-FTA	FG-FGA	FG-FGA	FT-FTA	Off	Def	Tot							
25	ManningAllen, Caelynn	f	2-6	0-0	0-0	2	0	2	1	4	5	3	0	3	19		
03	Aldridge, Lauren	g	1-7	1-6	0-0	0	1	1	5	3	2	3	0	1	30		
15	Robertson, Aisia	g	2-8	2-4	0-0	1	1	2	2	6	3	4	0	2	19		
22	Cheadle, Chayla	g	3-6	0-1	1-1	1	3	4	1	7	3	2	1	2	20		
33	Kopatich, Kylee	g	4-9	3-8	0-0	1	1	2	3	11	2	2	0	3	32		
04	Brown, Jada	g	2-4	1-1	3-3	1	3	4	1	8	0	2	0	0	20		
12	O'Neal, Timeka	g	6-12	6-12	0-0	0	3	3	18	0	1	0	2	27			
20	Christopher, Jayde	g	0-0	0-0	0-0	1	0	1	1	0	4	0	1	12			
55	Johnson, Tyler	g	4-9	0-0	2-3	0	4	4	3	10	0	3	0	2	21		
Team						3	0	3									
Totals			24-61	13-32	6-7	10	16	26	20	67	19	20	1	16	200		

FG % 1st Half: 11-28 39.3% 2nd half: 13-33 39.4% Game: 24-61 39.3% Deadball Rebounds 0
 3FG % 1st Half: 7-17 41.2% 2nd half: 6-15 40.0% Game: 13-32 40.6%
 FT % 1st Half: 0-1 0.0% 2nd half: 6-6 100.0% Game: 6-7 85.7%

Kansas State 81 • 16-8, 6-7

#	Player	Total			3-Ptr			Rebounds			PF	TP	A	TO	Blk	Stl	Min
		FG-FGA	FG-FGA	FT-FTA	FG-FGA	FG-FGA	FT-FTA	Off	Def	Tot							
01	Page, Kaylee	f	2-6	2-5	4-5	1	3	4	1	10	2	1	2	1	29		
50	Martin, Shaelyn	f	0-4	0-0	2-2	3	4	7	2	2	5	2	0	1	21		
22	Lewis, Breanna	c	9-13	0-0	6-10	2	8	10	3	24	0	4	1	2	33		
15	Deines, Megan	g	5-8	2-3	3-3	0	2	2	0	15	2	4	0	1	23		
24	Wesemann, Kindred	g	3-10	3-7	0-0	0	1	1	1	9	3	2	0	5	31		
00	Sheble, Jessica	g	1-1	0-0	0-0	2	1	3	0	2	0	2	0	1	8		
02	Young, Erica	g	0-0	0-0	0-0	0	0	0	0	0	1	0	0	2			
10	Goth, Kayla	g	1-2	0-0	2-2	3	2	5	0	4	1	1	1	0	17		
11	Taylor, Antoinette	g	1-1	0-0	3-4	0	2	2	0	5	2	2	0	0	9		
12	Thomson, Kelly	g	0-0	0-0	0-0	0	0	0	2	0	0	0	0	3			
20	Craig, Bri	g	4-7	1-3	1-1	1	0	1	1	10	1	2	0	2	23		
23	Hammaker, Anna	g	0-0	0-0	0-0	0	0	0	0	0	1	0	0	1			
Team						0	4	4									
Totals			26-52	8-18	21-27	12	27	39	10	81	17	22	4	13	200		

FG % 1st Half: 14-31 45.2% 2nd half: 12-21 57.1% Game: 26-52 50.0% Deadball Rebounds 4,1
 3FG % 1st Half: 5-11 45.5% 2nd half: 3-7 42.9% Game: 8-18 44.4%
 FT % 1st Half: 9-9 100.0% 2nd half: 12-18 66.7% Game: 21-27 77.8%

Officials: Jesse Dickerson, Amy Bonner, Greg Small
 Technical fouls: Kansas-O'Neal, Timeka. Kansas-None.
 Attendance: 5284

Score by periods	1st	2nd	3rd	4th	Total
Kansas	14	15	18	20	67
Kansas State	18	24	23	16	81

Points	In	Off	2nd	Fast	Bench
KU	22	10	11	2	36
K-STATE	36	19	12	7	21

Last FG - KU 4th-00:36. K-STATE 4th-00:55.

Score tied - 1 time.

Official Basketball Box Score -- Game Totals -- Final Statistics TCU vs Kansas 02/17/16 7:05 p.m. at Lawrence, Kan. (Allen Fieldhouse)

TCU 70 • 14-11, 6-8 Big 12

#	Player	Total			3-Ptr			Rebounds			PF	TP	A	TO	Blk	Stl	Min
		FG-FGA	FG-FGA	FT-FTA	FG-FGA	FG-FGA	FT-FTA	Off	Def	Tot							
55	Willie, Carol	c	0-0	0-0	0-0	0	1	1	2	0	0	0	1	0	8		
03	Hamilton, Veja	g	4-11	0-1	4-4	1	2	3	2	12	2	0	0	2	26		
14	Medley, Zahna	g	6-12	1-4	0-0	0	6	6	2	13	3	2	0	0	28		
15	Butts, Jada	g	2-3	0-0	5-6	2	1	3	2	9	4	3	0	4	26		
23	Alix, AJ	g	6-10	3-5	0-0	0	4	4	1	15	3	4	1	1	28		
01	Thompson, Torie	g	1-3	1-3	0-0	1	1	2	4	3	0	3	0	0	18		
21	Coleman, Sydney	g	1-2	1-1	1-2	0	0	0	2	4	0	1	0	1	9		
22	Moore, Jordan	g	2-5	0-0	0-0	0	4	4	0	4	0	4	0	2	19		
31	Hives-McCray, D.	g	1-2	0-0	2-2	2	3	5	3	4	0	3	0	2	9		
32	Diaz, Caitlin	g	1-5	0-2	2-2	1	7	8	4	4	0	3	0	0	22		
42	Lankford, Hattie	g	0-0	0-0	0-0	0	0	0	0	0	0	0	0	0	2		
44	Ferguson, Claire	g	1-1	0-0	0-0	0	1	1	0	2	0	0	0	0	5		
Team						3	2	5									
Totals			25-54	6-16	14-16	10	32	42	22	70	12	19	4	10	200		

FG % 1st Half: 12-27 44.4% 2nd half: 13-27 48.1% Game: 25-54 46.3% Deadball Rebounds 2
 3FG % 1st Half: 3-8 37.5% 2nd half: 3-8 37.5% Game: 6-16 37.5%
 FT % 1st Half: 8-9 88.9% 2nd half: 6-7 85.7% Game: 14-16 87.5%

Kansas 44 • 5-20, 0-14 Big 12

#	Player	Total			3-Ptr			Rebounds			PF	TP	A	TO	Blk	Stl	Min
		FG-FGA	FG-FGA	FT-FTA	FG-FGA	FG-FGA	FT-FTA	Off	Def	Tot							
25	ManningAllen, Caelynn	f	3-7	0-0	0-0	2	5	7	2	6	0	1	1	0	20		
03	Aldridge, Lauren	g	2-4	1-1	2-2	1	1	2	0	7	2	2	0	1	32		
15	Robertson, Aisia	g	5-17	0-2	1-1	1	1	2	2	11	2	2	0	3	22		
22	Cheadle, Chayla	g	1-6	0-3	3-6	2	3	5	3	5	1	0	0	3	24		
33	Kopatich, Kylee	g	3-11	1-6	1-2	0	0	2	8	0	2	0	1	1	31		
01	Lott, Chelsea	g	0-0	0-0	0-0	0	1	1	0	0	0	1	0	0	2		
04	Brown, Jada	g	1-3	0-0	2-3	2	2	4	3	4	1	2	0	0	17		
12	O'Neal, Timeka	g	1-7	1-4	0-0	0	0	0	1	3	1	2	0	0	19		
20	Christopher, Jayde	g	0-1	0-0	0-0	0	0	0	0	1	0	2	0	1	15		
55	Johnson, Tyler	g	0-2	0-0	0-0	0	5	5	2	0	1	3	1	1	18		
Team						5	1	6									
Totals			16-58	3-16	9-14	13	19	32	16	44	10	18	2	10	200		

FG % 1st Half: 9-29 31.0% 2nd half: 7-29 24.1% Game: 16-58 27.6% Deadball Rebounds 2
 3FG % 1st Half: 0-6 0.0% 2nd half: 3-10 30.0% Game: 3-16 18.8%
 FT % 1st Half: 5-9 55.6% 2nd half: 4-5 80.0% Game: 9-14 64.3%

Officials: Mark Zentz, Felicia Grinter, Bill Larence
 Technical fouls: TCU-None. Kansas-None.
 Attendance: 2579

Score by periods	1st	2nd	3rd	4th	Total
Kansas	16	19	15	20	70
TCU	12	11	8	13	44

Points	In	Off	2nd	Fast	Bench
TCU	22	14	3	6	21
KU	22	14	3	6	21

Last FG - TCU 4th-03:00. KU 4th-00:27.

Largest lead - TCU by 34 4th-03:00. KU by 4 1st-04:51.
 TCU led for 31:55. KU led for 04:10. Game was tied for 03:55.

Score tied - 3 times.
 Lead changed - 1 time.



Official Basketball Box Score -- Game Totals -- Final Statistics Oklahoma vs Kansas 02/20/16 2:05 p.m. at Lawrence, Kan. (Allen Fieldhouse)



Oklahoma 72 • 18-8, 9-6 Big 12

#	Player	Total			3-Ptr			Rebounds			PF	TP	A	TO	Blk	Stl	Min
		FG-FGA	FG-FGA	FT-FTA	FG-FGA	FG-FGA	FT-FTA	Off	Def	Tot							
42	Williams, Kaylon	f	3-9	0-0	0-2	2	2	4	1	6	2	0	0	0	18		
10	Little, Peyton	g	5-8	1-1	0-0	0	0	0	1	11	2	1	0	3	38		
21	Ortiz, Gabbi	g	0-3	0-1	0-0	0	2	2	1	0	0	3	0	0	22		
23	Manning, Maddie	g	7-11	0-1	4-5	1	4	5	2	18	2	4	0	5	36		
25	Carter, Gioya	g	2-6	1-2	4-4	0	2	2	2	9	1	2	0	0	24		
00	Pierre-Louis, Vionise	g	8-9	0-0	4-4	2	2	4	0	20	0	0	3	1	21		
02	Edwards, T'ona	g	0-0	0-0	3-6	0	3	3	1	3	3	0	0	3	24		
11	Wyatt, Deric	g	0-2	0-0	0-0	0	0	0	0	0	0	0	0	0	7		
22	Kellogg, Shaya	g	0-1	0-1	0-0	0	0	0	0	1	0	2	0	0	2		
32	Williams, LaNesia	g	2-2	0-0	1-1	0	2	2	0	5	0	2	0	0	8		
Team						1	3	4									
Totals			27-51	2-6	16-22	6	20	26	9	72	10	15	3	12	200		

FG % 1st Half: 15-25 60.0% 2nd half: 12-26 46.2% Game: 27-51 52.9% Deadball Rebounds 3
 3FG % 1st Half: 1-2 50.0% 2nd half: 1-4 25.0% Game: 2-6 33.3%
 FT % 1st Half: 4-7 57.1% 2nd half: 12-15 80.0% Game: 16-22 72.7%