

SEASON-BY-SEASON RECORDS



Fred Cozens



Caddy Works



Wilbur Johns



John Wooden



Gene Bartow



Gary Cunningham



Larry Brown

Year	Captain(s)	OVERALL			CONFERENCE		
		W	L	PCT	W	L	PCT
Fred Cozens							
1919-20	Si Gibbs	12	2	.957	8	2	—
1920-21	Raymond McBurney	8	2	.800	10	0	—
Caddy Works							
1921-22	Si Gibbs	9	1	.900	9	1	—
1922-23	Buck Beeson	12	4	.750	9	1	—
1923-24	Bill Goertz	8	2	.800	8	2	—
1924-25	Wilbur Johns	11	6	.647	9	1	—
1925-26	Horace Bresee	14	2	.875	10	0	—
1926-27	Jim Armstrong	12	4	.750	—	—	—
1927-28	Jack Ketchum	10	5	.667	5	4	.505
1928-29	Sam Balter	7	9	.438	1	8	.111
1929-30	Larry Wildes	14	8	.636	3	6	.333
1930-31	Carl Knowles	9	6	.600	4	5	.444
1931-32	Dick Linthicum	9	10	.474	4	7	.363
1932-33	Ted Lemcke	10	11	.476	1	10	.091
1933-34	Don Piper	10	13	.435	2	10	.166
1934-35	Cordner Gibson	11	12	.478	4	8	.333
1935-36	Don Ashen	10	13	.435	2	10	.166
1936-37	Orv Appleby	6	15	.286	2	10	.166
1937-38	Jack Cooper	4	20	.167	0	12	.000
1938-39	Bob Calkins	7	20	.259	0	12	.000
Wilbur Johns							
1939-40	Alex Rafalovich	8	17	.320	3	9	.250
1940-41	Bob Null and Lloyd Anderson	6	20	.231	2	10	.166
1941-42	Bob Alshuler and Ernie Handelsman	5	18	.217	2	10	.166
1942-43	John Fryer	14	7	.667	4	4	.500
1943-44	Dick West	10	10	.500	3	3	.500
1944-45	Bill Putnam and Bill Rankin	12	12	.500	3	1	.750
1945-46	Dick Hough and Hal Michaels	8	16	.333	5	7	.417
1946-47	Dick Perry	18	7	.720	9	3	.750
1947-48	John Stanich	12	13	.480	3	9	.250
John R. Wooden							
1948-49	Ron Pearson	22	7	.759	10	2	.833
1949-50	Alan Sawyer	24	7	.774	10	2	.833
1950-51	Eddie Sheldrake	19	10	.655	9	4	.692
1951-52	Don Johnson and Jerry Norman	19	12	.613	8	4	.667
1952-53	Barry Porter	16	8	.667	6	6	.500
1953-54	Ron Livingston	18	7	.720	7	5	.583
1954-55	Don Bragg and John Moore	21	5	.808	11	1	.917
1955-56	Willie Nauls	22	6	.786	16	0	1.000
1956-57	Dick Banton	22	4	.846	13	3	.813
1957-58	Ben Rogers	16	10	.615	10	6	.625
1958-59	Walt Torrence	16	9	.640	10	6	.625
1959-60	Cliff Brandon	14	12	.538	7	5	.583
1960-61	Bill Ellis and John Berberich	18	8	.692	7	5	.583
1961-62	John Green and Gary Cunningham	18	11	.621	10	2	.833
1962-63	Jim Milhorn	20	9	.690	8	5	.615
1963-64	Walt Hazzard and Jack Hirsch	30	0	1.000	15	0	1.000
1964-65	Keith Erickson and Gail Goodrich	28	2	.933	14	0	1.000
1965-66	Doug McIntosh	18	8	.692	10	4	.714
1966-67	Mike Warren	30	0	1.000	14	0	1.000
1967-68	Mike Warren	29	1	.967	14	0	1.000
1968-69	Lew Alcindor and Lynn Shackelford	29	1	.967	13	1	.929
1969-70	John Vallely	28	2	.933	12	2	.857
1970-71	Curtis Rowe and Sidney Wicks	29	1	.967	14	0	1.000
1971-72	Henry Bibby	30	0	1.000	14	0	1.000
1972-73	Larry Farmer	30	0	1.000	14	0	1.000
1973-74	Bill Walton, Keith Wilkes	26	4	.867	12	2	.857
1974-75	David Meyers	28	3	.903	12	2	.857
Gene Bartow							
1975-76	Marques Johnson and Richard Washington	28	4	.875	13	1	.929
1976-77	Marques Johnson	24	5	.831	11	3	.786
Gary Cunningham							
1977-78	Raymond Townsend	25	3	.893	14	0	1.000
1978-79	David Greenwood	25	5	.833	15	3	.833



John Wooden



Gene Bartow



Walt Hazzard

SEASON-BY-SEASON RECORDS



Larry Farmer



Walt Hazzard



Jim Harrick



Steve Lavin



Ben Howland



Steve Alford

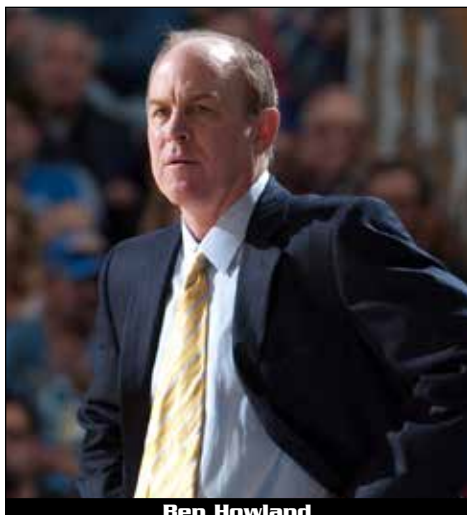
Year	Captain(s)	OVERALL			CONFERENCE		
		W	L	PCT	W	L	PCT
Larry Brown							
1979-80	Kiki Vandeweghe and James Wilkes	22	10	.688	12	6	.667
1980-81	Mike Sanders and Tony Anderson	20	7	.741	13	5	.722
Larry Farmer							
1981-82	Mike Sanders and Tony Anderson	21	6	.778	14	4	.778
1982-83	Michael Holton	23	6	.793	15	3	.833
1983-84	Ralph Jackson	17	11	.607	10	8	.556
Walt Hazzard							
1984-85	Gary Maloncon	21	12	.636	12	6	.667
1985-86	Reggie Miller and Montel Hatcher	15	14	.517	9	9	.500
1986-87	Reggie Miller	25	7	.781	14	4	.778
1987-88	Craig Jackson and Dave Immel	16	14	.533	12	6	.667
Jim Harrick							
1988-89	Pooh Richardson	21	10	.677	13	5	.722
1989-90	Trevor Wilson	22	11	.667	11	7	.611
1990-91	Game Captains	23	9	.719	11	7	.611
1991-92	Gerald Madkins	28	5	.848	16	2	.889
1992-93	Mitchell Butler	22	11	.667	11	7	.611
1993-94	Shon Tarver and Rodney Zimmerman	21	7	.750	13	5	.722
1994-95	Ed O'Bannon, Tyus Edney and George Zidek	32	1	.979	17	1	.944
1995-96	Charles O'Bannon and Cameron Dollar	23	8	.742	16	2	.889
Steve Lavin							
1996-97	Charles O'Bannon and Cameron Dollar	24	8	.750	15	3	.833
1997-98	Toby Bailey and J.R. Henderson	24	9	.727	12	6	.667
1998-99	Baron Davis	22	9	.710	12	6	.667
1999-00	Sean Farnham, Rico Hines and Earl Watson	21	12	.636	10	8	.556
2000-01	Earl Watson and Ryan Bailey	23	9	.719	14	4	.714
2001-02	Rico Hines	21	12	.636	11	7	.611
2002-03	Jason Kapono and Ray Young	10	19	.345	6	12	.333
Ben Howland							
2003-04	Cedric Bozeman and Dijon Thompson	11	17	.393	7	11	.389
2004-05	Dijon Thompson	18	11	.621	11	7	.611
2005-06	Cedric Bozeman, Arron Afflalo and Jordan Farmar	32	7	.821	14	4	.778
2006-07	Arron Afflalo, Josh Shipp and Darren Collison	30	6	.833	15	3	.833
2007-08	Darren Collison and Lorenzo Mata-Real	35	4	.897	16	2	.889
2008-09	Darren Collison, Josh Shipp and Alfred Aboya	26	9	.743	13	5	.722
2009-10	Michael Roll	14	18	.438	8	10	.444
2010-11	Malcolm Lee and Lazerick Jones	23	11	.676	13	5	.722
2011-12	Lazerick Jones	19	14	.575	11	7	.611
2012-13	Larry Drew II, David Wear and Travis Wear	25	10	.714	13	5	.722
Steve Alford							
2013-14	Jordan Adams and Kyle Anderson	28	9	.757	12	6	.667
2014-15	Bryce Alford, Tony Parker and Norman Powell	22	14	.611	11	7	.611
2015-16	Bryce Alford, Isaac Hamilton and Tony Parker	15	17	.469	6	12	.333



Jim Harrick



Steve Lavin



Ben Howland

UCLA's All-Time Head Coaching Records		OVERALL			CONFERENCE		
Years	Coach	W	L	PCT	W	L	PCT
2 (1919-21)	Fred W. Cozens	20	4	.833	18	2	---
18 (1921-39)	Caddy Works	173	161	.518	73	107	---
9 (1939-48)	Wilbur Johns	93	120	.437	34	56	.378
27 (1948-75)	John R. Wooden	620	147	.808	300	67	.817
2 (1975-77)	Gene Bartow	52	9	.852	24	4	.857
2 (1977-79)	Gary Cunningham	50	8	.862	29	3	.906
2 (1979-81)	Larry Brown	42	17	.712	25	11	.694
3 (1981-84)	Larry Farmer	61	23	.726	39	15	.722
4 (1984-88)	Walt Hazzard	77	47	.621	47	25	.653
8 (1988-96)	Jim Harrick	192	62	.756	108	36	.750
7 (1996-03)	Steve Lavin	145	78	.650	80	43	.650
10 (2003-13)	Ben Howland	233	107	.685	121	59	.672
3 (2013-16)	Steve Alford	65	40	.619	29	25	.537
97 YEARS	TOTALS	1823	823	.689	927	453	.672

YEAR-BY-YEAR RESULTS

1919-20

Overall: 12-2

Head Coach: Fred W. Cozens

Opponent	Score	W/L
Manual Arts HS	46-38	W
Hollywood HS	45-21	W
Los Angeles Poly HS	26-22	W
Los Angeles Poly HS	21-12	W
Redlands	21-34	L
Occidental	41-29	W
Pomona	44-29	W
Whittier	33-23	W
Throop	36-25	W
Occidental	43-30	W
Pomona	33-30	W
Whittier	33-21	W
Throop	30-41	L
Redlands	23-17	W

1920-21

Overall: 9-2

Coach: Fred W. Cozens

Opponent	Score	W/L
California	28-36	L
Redlands	29-26	W
Pomona	24-21	W
Cal Tech	32-18	W
Redlands	26-22	W
Occidental	36-26	W
Whittier	18-16	W
Whittier	26-24	W
Pomona	36-24	W
Cal Tech	37-22	W
California	29-46	L

1921-22

Overall: 9-1

Coach: Caddy Works

Opponent	Score	W/L
Cal Tech	30-12	W
Redlands	24-26	L
Occidental	33-24	W
Whittier	29-9	W
Pomona	34-22	W
Cal Tech	19-17	W
Redlands	41-19	W
Occidental	34-14	W
Whittier	23-15	W
Pomona	46-18	W

1922-23

Overall: 12-4

Coach: Caddy Works

Opponent	Score	W/L
Cal Tech	40-15	W
Redlands	34-21	W
Occidental	33-11	W
Whittier	40-11	W
Pomona	27-18	W
Cal Tech	42-13	W
Redlands	24-26	L
Occidental	61-12	W
Pomona	38-27	W
Whittier	37-27	W
California	39-32	W
California	15-47	L
Arizona	43-30	W
Arizona	22-33	L
Arizona	43-30	W
Arizona	22-32	L

1923-24

Overall: 8-2

Coach: Caddy Works

Opponent	Score	W/L
Cal Tech	51-20	W
Redlands	24-17	W
Occidental	41-9	W
Pomona	32-24	W
Cal Tech	46-24	W
Redlands	28-23	W
Occidental	20-14	W
Whittier	20-22	L
Pomona	29-21	W
Whittier	21-23	L

1924-25

Overall: 11-6

Coach: Caddy Works

Opponent	Score	W/L
La Verne	54-11	W
San Diego State	53-33	W

Oregon Agriculture College	15-20	L
Stanford	17-23	L
Stanford	10-23	L
California	24-33	L
San Francisco Olympic Club	21-25	L
Redlands	48-5	W
Whittier	32-11	W
Pomona	31-18	W
Pomona	29-14	W
Redlands	31-16	W
Occidental	36-20	W
Occidental	23-24	L
Whittier	22-15	W
Cal Tech	29-19	W
Cal Tech	30-20	W

1925-26

Overall: 14-2

Coach: Caddy Works

Opponent	Score	W/L
Hollywood AC	27-25	W
San Diego State	32-17	W
Los Angeles AC	33-19	W
Montana State	36-21	W
Oregon Agriculture College	32-22	W
Stanford	28-15	W
Redlands	32-8	W
Occidental	38-11	W
Occidental	45-14	W
Pomona	37-20	W
Stanford	29-32	L
California	8-22	L
Cal Tech	27-21	W
Whittier	29-23	W
Whittier	18-14	W
Redlands	46-17	W

1926-27

Overall: 12-4

Coach: Caddy Works

Opponent	Score	W/L
Hollywood AC	28-36	L
Pacific Coast Club	17-28	L
Oregon Agriculture College	32-22	W
Idaho	17-32	L
Stanford	21-17	W
Stanford	23-21	W
Occidental	32-17	W
San Diego State	31-9	W
San Diego State	28-19	W
Cal Tech	24-16	W
Pomona	48-13	W
Occidental	28-14	W
Redlands	42-26	W
Pomona	42-16	W
Whittier	22-31	L
Whittier	29-23	W

1927-28

Overall: 10-5

PCC: 5-4

Coach: Caddy Works

Opponent	Site	Score	W/L
Pomona	H	53-32	W
Pomona	H	70-10	W
Cal Tech	H	52-16	W
Los Angeles AC	H		W
Hollywood AC	H		W
Pacific Coast Club	H		L
Stanford*	A	29-22	W
Stanford*	A	28-22	W
Stanford*	H	27-34	L
California*	H	34-35	L
California*	H	48-36	W
California*	H	26-33	L
USC*	H	35-45	L
USC*	A	34-27	W
USC*	A	47-37	W

* Pacific Coast Conference game

1928-29

Overall: 7-9

PCC: 1-8

Coach: Caddy Works

Opponent	Site	Score	W/L
Pomona	A	43-22	W
La Verne	A	46-24	W
Hollywood AC	H	40-23	W
Los Angeles AC	H	43-25	W
Utah	A	32-28	W
Utah	A	28-44	L
North Dakota	H	41-29	W
California*	A	21-26	L

California*	A	31-35	L
California*	H	31-47	L
Stanford*	A	20-34	L
Stanford*	H	26-34	L
Stanford*	H	24-32	L
USC*	A	23-28	L
USC*	A	31-39	L
USC*	A	44-33	W

* Pacific Coast Conference game

1929-30

Overall: 14-8

PCC: 3-6

Coach: Caddy Works

Opponent	Site	Score	W/L
Elks Club	H	51-34	W
La Verne	H	37-22	W
Pomona	A	48-19	W
Hollywood AC	H	44-32	W
Los Angeles AC	H	23-17	W
Whittier	H	34-14	W
Occidental	H	46-26	W
Cal Tech	H	53-24	W
BYU	H	40-47	L
BYU	H	47-43	W
Utah	H	44-34	W
Utah	H	43-33	W
Utah	H	44-52	L
Stanford*	H	63-30	W
California*	A	26-23	W
USC*	H	16-33	L
Stanford*	A	37-40	L
Stanford*	A	20-15	W
California*	H	29-32	L
California*	H	30-32	L
USC*	H	30-42	L
USC*	H	28-33	L

* Pacific Coast Conference game

1930-31

Overall: 9-6

PCC: 4-5 (3rd-South)

Coach: Caddy Works

Opponent	Site	Score	W/L
Whittier	A	57-23	W
Pomona	H	43-15	W
Hollywood AC	H	42-34	W
Los Angeles AC	H	24-41	L
Montana	H	28-27	W
Montana	H	59-27	W
Stanford*	A	32-23	W
Stanford*	A	28-26	W
California*	A	24-26	L
USC*	H	25-16	W
Stanford*	A	28-29	L
California*	A	39-43	L
California*	A	28-30	L
USC*	H	22-24	L
USC*	H	46-23	W

* Pacific Coast Conference game

1931-32

Overall: 9-10

PCC: 4-7 (3rd-South)

Coach: Caddy Works

Opponent	Site	Score	W/L
Hollywood AC	H	35-20	W
Whittier	H	38-21	W
Whittier	H	48-23	W
Pasadena Majors	H	24-34	L
Utah State	H	27-39	L
Utah State	H	20-33	L
Utah State	H	30-21	W
Los Angeles AC	H	30-25	W
Stanford*	A	22-25	L
Stanford*	A	26-31	L
California*	H	18-29	L
California*	H	25-26	L
USC*	H	19-17	W
Stanford*	H	35-31	W
Stanford*	H	28-18	W
California*	A	28-34	L
California*	A	29-31	L
USC*	A	26-24	W
USC*	A	31-35	L

* Pacific Coast Conference game

1932-33

Overall: 10-11

PCC: 1-10 (4th-South)

Coach: Caddy Works

Opponent	Site	Score	W/L
La Verne	H	41-34	W
Whittier	H	68-36	W
Hollywood AC	H	82-36	W

YEAR-BY-YEAR RESULTS

Pasadena Majors	H	33-41	L
Los Angeles Junior College	H	32-21	W
Hancock Oilers	H	37-30	W
Nevada	H	50-26	W
Nevada	H	44-29	W
Utah State	H	54-39	W
Santa Clara	H	41-22	W
California*	A	37-40	L
California*	A	29-33	L
USC*	A	27-49	L
Stanford*	A	44-36	W
Stanford*	A	38-41	L
USC*	H	33-39	L
California*	H	28-37	L
California*	H	36-37	L
USC*	H	18-44	L
Stanford*	H	38-40	L
Stanford*	H	35-41	L

* Pacific Coast Conference game

1933-34

Overall: 10-13 **PCC: 2-10 (4th-South)**

Coach: Caddy Works

Opponent	Site	Score	W/L
Long Beach Junior College	H	52-29	W
Whittier	H	37-27	W
La Verne	H	48-24	W
Chico State	A	31-28	W
Chico State	A	41-23	W
Saint Mary's	A	55-45	W
San Francisco Olympic Club	A	30-35	L
San Francisco Athens AC	A	33-27	W
Santa Clara	A	24-47	L
Santa Clara	A	24-40	L
Los Angeles Junior College	H	35-15	W
Stanford*	H	26-45	L
Stanford*	H	32-31	W
USC*	H	26-39	L
California*	A	31-46	L
California*	A	28-39	L
USC*	H	22-39	L
Stanford*	A	28-31	L
Stanford*	A	34-39	L
California*	H	30-42	L
California*	H	40-38	W
USC*	H	21-46	L
USC*	H	23-32	L

* Pacific Coast Conference game

1934-35

Overall: 11-12 **PCC: 4-8 (T-3rd-South)**

Coach: Caddy Works

Opponent	Site	Score	W/L
Whittier	A	47-30	W
Los Angeles Junior College	H	31-15	W
Fresno State	A	35-31	W
Chico State	A (OT)	43-41	W
San Jose State	A	35-25	W
Santa Clara	A	30-32	L
Universal Pictures	H	11-20	L
Saint Mary's	A	34-38	L
Utah State	H	39-44	L
San Diego State	A	31-28	W
San Diego State	A	34-25	W
USC*	H	34-39	L
USC*	H	22-52	L
USC*	H	22-55	L
USC*	H	33-43	L
California*	H	35-24	W
California*	H	26-38	L
California*	A (OT)	39-37	W
California*	A	21-38	L
Stanford*	H	34-27	W
Stanford*	H	38-32	W
Stanford*	A	28-33	L
Stanford*	A	16-35	L

1935-36

Overall: 10-13 **PCC: 2-10 (4th-South)**

Coach: Caddy Works

Opponent	Site	Score	W/L
Baxter Club Glendale	H	36-28	W
Los Angeles Junior College	H	30-22	W
Glendale Junior College	H	50-24	W
Universal Pictures	H	23-20	W
College of Pacific	A	28-31	L
San Jose State	A	30-22	W
Santa Clara	A	42-33	W
Utah State	H	32-43	L
Joe E. Brown All-Stars	H	36-25	W
Utah State	H	40-36	W

Utah State	H	34-44	L
Stanford*	A	30-44	L
Stanford*	A	44-37	W
USC*	A	36-38	L
California*	A	33-35	L
California*	A	26-30	L
USC*	H	24-32	L
Stanford*	H	32-45	L
Stanford*	H	35-39	L
USC*	H	32-36	L
California*	H	32-34	L
California*	H	32-28	W
USC*	A	28-55	L

* Pacific Coast Conference game

1936-37

Overall: 6-15 **PCC: 2-10 (4th-South)**

Coach: Caddy Works

Opponent	Site	Score	W/L
Compton Junior College	H	39-6	W
Los Angeles Junior College	H	41-30	W
Oregon	A	30-54	L
Washington State	A	23-33	L
Idaho	A	45-34	W
Idaho	A	26-30	L
Oregon State	A	40-38	W
Washington	H (2OT)	51-52	L
Ohio State	H	39-48	L
USC*	H	31-41	L
Stanford*	A	40-63	L
Stanford*	A	36-69	L
USC*	H	31-36	L
California*	A	27-33	L
California*	A (OT)	46-44	W
Stanford*	H	40-42	L
Stanford*	H	38-67	L
USC*	H	36-46	L
California*	H	37-33	W
California*	H	31-43	L
USC*	H	29-43	L

* Pacific Coast Conference game

1937-38

Overall: 4-20 **PCC: 0-12 (4th-South)**

Coach: Caddy Works

Opponent	Site	Score	W/L
Los Angeles Junior College	H	35-21	W
La Verne	H	27-25	W
Chico State	H	33-26	W
Oregon State	A	25-39	L
Oregon	A	26-47	L
Washington State	A	25-48	L
Washington State	A	31-40	L
Idaho	A	19-33	L
Idaho	A	21-30	L
Loyola Marymount	H	29-26	W
Indiana	H	33-42	L
Purdue	H	39-63	L
USC*	A	31-48	L
California*	H	37-39	L
California*	H	27-32	L
USC*	H	30-40	L
Stanford*	H	33-69	L
Stanford*	H	29-56	L
Stanford*	A	31-53	L
Stanford*	A	33-50	L
California*	A	21-32	L
California*	A	22-41	L
USC*	A	33-52	L
USC*	H	35-57	L

* Pacific Coast Conference game

1938-39

Overall: 7-20 **PCC: 0-12 (4th-South)**

Coach: Caddy Works

Opponent	Site	Score	W/L
Los Angeles City College	H	44-28	W
Pomona	H	51-34	W
La Verne	H	76-19	W
San Diego State	A	49-52	L
San Diego State	A	43-56	L
Idaho	H	29-36	L
Tulane	H	35-37	L
Long Beach Junior College	H	55-27	W
Los Angeles City College	H	47-41	W
Ohio State ¹	N	38-46	L
Nebraska ¹	N	30-35	L
Ohio State	H	57-59	L
Nebraska	H	42-40	W
Occidental	A	46-34	W
California*	H	39-54	L

California*	H	33-49	L
USC*	H	36-69	L
Pomona	A	35-43	L
Stanford*	A	44-56	L
Stanford*	A	21-47	L
USC*	H	49-59	L
California*	A	32-54	L
California*	A	22-42	L
Stanford*	H	32-38	L
Stanford*	H	33-37	L
USC*	H	35-43	L
USC*	H	26-57	L

* Pacific Coast Conference game
1 game played in Berkeley, Calif.

1939-40

Overall: 6-17 **PCC: 3-9 (4th-South)**

Coach: Wilbur Johns

Opponent	Site	Score	W/L
San Diego State	A	24-46	L
San Diego State	A	31-28	W
Bank of America	H	39-38	W
Santa Clara	A	21-36	L
San Jose State	A	46-33	W
San Jose State	A	31-40	L
North American Aviation	H	39-42	L
20th Century-Fox	H	33-39	L
UC Davis	H	34-32	W
New Mexico State	H	28-29	L
Saint Mary's	H	34-33	W
Loyola Marymount	H	36-40	L
Stanford*	A	38-53	L
Stanford*	A	36-40	L
USC*	A	32-50	L
Bank of America	H	29-51	L
California*	A	33-39	L
California*	A	34-32	W
USC*	A	26-60	L
Stanford*	H	42-51	L
Stanford*	H (OT)	42-37	W
California*	H	26-48	L
California*	H	35-33	W
USC*	H	26-32	L
USC*	H	35-47	L

* Pacific Coast Conference game

1940-41

Overall: 6-20 **PCC: 2-10 (4th-South)**

Coach: Wilbur Johns

Opponent	Site	Score	W/L
San Diego State	A	28-33	L
San Diego State	A	31-34	L
20th Century-Fox	A	26-38	L
DePaul	A	23-30	L
Western State	A	43-56	L
Bradley	A	49-52	L
Illinois State	A	21-37	L
Indiana	H	26-51	L
Loyola Marymount	H	39-38	W
Bradley	H	27-36	L
San Francisco	H	55-53	W
Saint Mary's	H	45-29	W
USC*	H	35-56	L
California*	H	32-42	L
California*	H	35-33	W
Bank of America	A	37-44	L
Stanford*	H	44-54	L
Stanford*	H	45-44	W
USC*	H	41-43	L
Saint Mary's	A	45-40	W
California*	A	32-54	L
California*	A	28-30	L
Stanford*	A	44-49	L
Stanford*	A	34-56	L
USC*	A	47-53	L
USC*	A	37-52	L

* Pacific Coast Conference game

1941-42

Overall: 5-18 **PCC: 2-10 (4th-South)**

Coach: Wilbur Johns

Opponent	Site	Score	W/L
Loyola Marymount	H	39-36	W
Creighton	A	18-34	L
Purdue	A	27-38	L
Indiana	A	33-47	L
Nebraska	A	42-36	W
Loyola-Chicago	H	45-53	L
Loyola Marymount	H	34-40	L
San Francisco	A	40-46	L
Santa Clara	A	67-52	W

YEAR-BY-YEAR RESULTS

USC*	H	51-59	L
20th Century-Fox	H	49-60	L
Stanford*	A	43-54	L
Stanford*	A	30-49	L
20th Century-Fox	A	54-55	L
California*	H	50-54	L
California*	H	50-34	W
USC*	A	30-42	L
Stanford*	H	30-42	L
Stanford*	H	28-36	L
California*	A	33-32	W
California*	A	43-51	L
USC*	H	44-63	L
USC*	H	35-49	L

* Pacific Coast Conference game

1942-43

Overall: 14-7 PCC: 4-4 (T-2nd-South)

Coach: Wilbur Johns

Opponent	Site	Score	W/L
Lockheed-Vega All-Stars	H	42-34	W
Loyola Marymount	A	38-17	W
Loyola Marymount	H	37-20	W
San Francisco	H	41-30	W
San Francisco	H	39-37	W
Whittier	H (OT)	42-44	L
Los Alamitos Naval AB	H	68-43	W
Santa Ana Army AB	H	46-37	W
California*	H	49-40	W
20th Century-Fox	A	52-53	L
20th Century-Fox	H	43-37	W
USC*	A	49-60	L
USC*	A	39-51	L
Santa Ana Army AB	A	43-36	W
20th Century-Fox	A	39-44	L
St. Mary's Pre-Flight	H	41-38	W
Stanford*	H	60-57	W
Stanford*	A	41-60	L
California*	A	42-40	W
USC*	H	42-37	W
USC*	H	46-53	L

* Pacific Coast Conference game

1943-44

Overall: 10-10 PCC: 3-3 (2nd-South)

Coach: Wilbur Johns

Opponent	Site	Score	W/L
Pepperdine	H	36-48	L
Long Beach Ferry Command	A	18-23	L
Cal Tech	H	58-41	W
Occidental	H	52-34	W
Redlands	A	50-26	W
Redlands	H	56-39	W
Roosevelt Base	A	42-43	L
20th Century-Fox	H	41-49	L
Camp Santa Anita	H	47-40	W
USC*	H	33-19	W
Cal Tech	A	36-38	L
Occidental	A	44-42	W
USC*	A	41-48	L
March Field	H	32-34	L
California*	H	27-36	L
California*	A	24-36	L
Pepperdine	A	40-38	W
San Diego Naval TC	A	36-43	L

USC*	A	32-30	W
USC*	H	40-32	W

* Pacific Coast Conference game

1944-45

Overall: 12-12 PCC: 3-1 (1st-South)

Championships Won: PCC Southern Division

Coach: Wilbur Johns

Opponent	Site	Score	W/L
Los Angeles City College	H	44-30	W
Occidental	H	35-36	L
El Toro Marines	H	33-37	L
Pepperdine	A	33-36	L
San Diego Marines	A	29-53	L
Occidental	A	45-47	L
San Diego Navy	A	32-35	L
Santa Ana Army AB	A	35-47	L
Cal Tech	A	42-37	W
20th Century-Fox	H	56-76	L
USC*	A	25-53	L
Camp Ross	A	44-50	L
California*	A	37-26	W
San Diego Coast Guard	H	46-40	W
Pepperdine	H	41-28	W
March Field	H	57-50	W
USC*	H	41-36	W
San Diego Naval TC	H	40-37	W
Fairfield Skymasters	H	26-29	L
Cal Tech	H	29-28	W
Camp Ross	H	47-42	W
California*	H	50-44	W
USC	H	34-28	W
USC	A	20-37	L

* Pacific Coast Conference game

1945-46

Overall: 8-16 PCC: 5-7 (3rd-South)

Coach: Wilbur Johns

Date	Opponent	Site	Score	W/L
12/4	Carroll Shamrocks	H	31-34	L
12/7	Long Beach ATC	H	44-41	W
12/8	Pepperdine	H	37-47	L
12/11	Santa Ana Army Air Base	A	25-38	L
12/14	San Diego Naval TC	A	31-36	L
12/15	San Diego Dons	A	34-38	L
12/18	Camp Ross	A	33-47	L
12/21	Cal Tech	H	33-9	W
12/22	St. Mary's Pre-Flight	H	30-44	L
12/28	20th Century-Fox	H	40-45	L
12/30	Camp Ross	H	49-67	L
1/4	California*	A	33-45	L
1/5	California*	A	35-37	L
1/11	USC*	A	33-43	L
1/12	USC*	H	40-45	L
1/18	Stanford*	A	35-18	W
1/19	Stanford*	A	41-29	W
1/23	Long Beach Proctors	H	49-29	W
2/1	California*	H	37-50	L
2/2	California*	H	25-49	L
2/8	Stanford*	H	39-26	W
2/9	Stanford*	H	47-20	W
2/15	USC*	A	45-35	W
2/16	USC*	H	43-60	L

* Pacific Coast Conference game

1946-47

Overall: 18-7 PCC: 9-3 (1st-South)

Championships Won: PCC Southern Division

Coach: Wilbur Johns

Date	Opponent	Site	Score	W/L
12/6	UC Santa Barbara	H	32-18	W
12/7	San Francisco	H	43-30	W
12/13	Redlands	H	81-46	W
12/14	Santa Clara	H	49-54	L
12/20	Los Angeles Police	H	83-18	W
12/26	Wyoming ¹	N	54-41	W
12/28	St. Joseph's	A	50-48	W
12/30	New York University	A	49-66	L
1/2	Purdue	A	59-53	W
1/10	Stanford*	H	33-38	L
1/11	Stanford*	H	48-40	W
1/17	USC*	A	60-46	W
1/18	USC*	H	61-46	W
1/24	California*	A	52-45	W
1/25	California*	A	46-62	L
2/7	Carroll's Shamrocks	H	69-59	W
2/10	20th Century-Fox	H	66-58	W
2/14	California*	H	85-52	W
2/15	California*	H	72-59	W
2/21	Stanford*	A	56-39	W
2/22	Stanford*	A	53-68	L
2/28	USC*	A	71-66	W
3/1	USC*	H	66-54	W
3/7	Oregon State	A	52-69	L
3/8	Oregon State	A	46-63	L

* Pacific Coast Conference game

¹ game played in Buffalo, N.Y.

1947-48

Overall: 12-13 PCC: 3-9 (T-3rd-South)

Coach: Wilbur Johns

Date	Opponent	Site	Score	W/L
11/28	Loyola Marymount	H	49-34	W
11/29	Loyola Marymount	H	53-24	W
12/5	Santa Clara	H	47-42	W
12/6	Santa Clara	H	50-55	L
12/12	Nevada	A	51-38	W
12/13	Oakland Bittners	A	63-67	L
12/16	20th Century-Fox	H	67-47	W
12/19	Baylor	H	42-45	L
12/20	College of Pacific	H	58-41	W
12/27	St. Joseph's	A	64-54	W
12/29	Long Island	A	66-64	W
1/1	Cornell	A	50-47	W
1/9	California*	H	49-58	L
1/10	Stanford*	H	55-47	W
1/16	USC*	H	42-56	L
1/17	USC*	A	51-50	W
1/24	Sacramento Senators	A	57-59	L
2/13	Stanford*	A	47-64	L
2/14	California*	A	44-62	L
2/20	Stanford*	H	47-55	L
2/21	California*	H	39-44	L
2/27	California*	A	37-41	L
2/28	Stanford*	A	48-46	W
3/5	USC*	H	57-68	L
3/6	USC*	A	46-62	L

* Pacific Coast Conference game

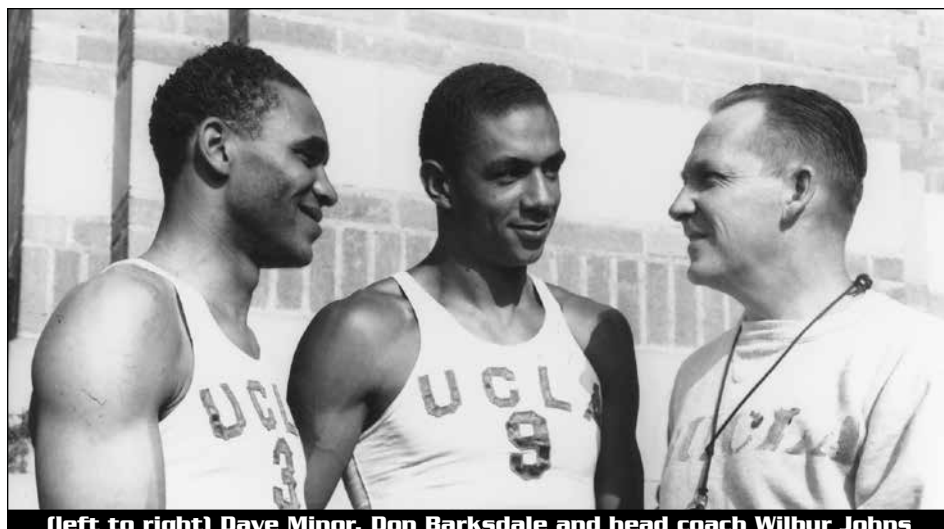
1948-49

Overall: 22-7 PCC: 10-2 (1st-South)

Championships Won: PCC Southern Division

Coach: John Wooden

Date	Opponent	AP Rk	Site	Score	W/L
12/3	UC Santa Barbara		H	43-37	W
12/4	Loyola Marymount		H	51-38	W
12/10	Saint Mary's ¹		N	61-58	W
12/11	San Francisco		A	61-57	W
12/17	Santa Clara		H	61-43	W
12/21	Northwestern		H	49-44	W
12/23	Wisconsin		H	46-49	L
12/27	Washington State ¹		N	54-44	W
12/28	Stanford ¹		N	47-55	L
12/30	Oregon State ¹		N	58-62	L
1/7	Stanford*		A	52-61	L
1/8	California*		A	63-54	W
1/14	USC*		H	74-68	W
1/15	USC*		A	52-59	L
1/28	Cal Poly		H	68-46	W
1/29	Fresno State		H	77-33	W
2/3	20th Century-Fox		H	73-55	W
2/5	Pittsburgh		H	51-48	W
2/11	California*		H	49-37	W
2/12	Stanford*	-/10	H	59-48	W
2/18	California*		A	45-42	W



(left to right) Dave Minor, Don Barksdale and head coach Wilbur Johns

YEAR-BY-YEAR RESULTS

2/19	Stanford*	-/20	A	59-46	W
2/25	Stanford*		H	56-50	W
2/26	California*		H	59-50	W
3/4	USC*		A	51-50	W
3/5	USC*		H	63-55	W
3/11	Oregon State	15/-	A	41-53	L
3/12	Oregon State	15/-	A	46-39	W
3/14	Oregon State	15/-	A	35-41	L

Final Polls: AP - 15

* Pacific Coast Conference game
1 game played in San Francisco, Calif.

1949-50

Overall: 24-7 PCC: 10-2 (1st-South)

Championships Won: PCC

Coach: John Wooden

Date	Opponent	AP Rk	Site	Score	W/L
12/3	Arizona State		H	83-55	W
12/9	San Diego State		H	65-36	W
12/10	Pepperdine		H	55-41	W
12/16	Santa Clara ¹		N	68-56	W
12/17	San Francisco		A	40-53	L
12/23	Illinois		A	65-63	W
12/26	La Salle		A	62-57	W
12/27	City College of N.Y.		A	60-53	W
12/29	Northwestern		A	58-64	L
12/30	Wisconsin		A	52-54	L
12/31	Marquette		A	68-52	W
1/6	California*	9/-	H	50-45	W
1/7	Stanford*	9/-	H	71-55	W
1/13	USC*	10/-	A	45-58	L
1/14	USC*	10/-	H	68-47	W
1/27	UC Santa Barbara	11/-	H	67-43	W
1/28	Cal Poly	11/-	H	69-38	W
2/3	Fresno State	13/-	H	93-43	W
2/4	Santa Clara	13/-	H	74-64	W
2/10	Stanford*	12/-	A	65-55	W
2/11	California*	12/-	A	54-47	W
2/17	Stanford*	10/-	H	69-59	W
2/18	California*	10/-	H	64-56	W
2/24	California*	7/-	A	46-44	W
2/25	Stanford*	7/-	A	62-57	W
3/3	USC*	6/-	H	43-45	L
3/4	USC*	6/-	A	74-57	W
3/10	Washington State	7/18	H	60-58	W
3/11	Washington State	7/18	H	52-49	W
3/24	Bradley ²	7/1	N	59-73	L
3/25	BYU ³	7/-	N	62-83	L

Final Polls: AP - 7

* Pacific Coast Conference game
1 game played in San Francisco, Calif.
2 NCAA Tournament
3 NCAA Tournament (West Regional, consolation game in Provo, Utah)

1950-51

Overall: 19-10 PCC: 9-4 (T-1st-South)

Championships Won: PCC Southern Division

Coach: John Wooden

Date	Opponent	AP Rk	Site	Score	W/L
12/2	Arizona State		H	79-49	W
12/8	Oregon		A	77-55	W
12/9	Oregon		A	54-72	L
12/15	Santa Clara		H	71-48	W
12/16	San Jose State		H	82-59	W
12/19	Bradley	9/2	A	74-79	L
12/21	Long Island	9/7	A	71-90	L
12/23	Iowa	9/-	A	63-80	L
12/28	Pittsburgh		H	68-44	W
12/30	LSU		H	95-66	W
1/5	Stanford*		A	78-73	W
1/6	Stanford*		A	71-74	L
1/12	USC*	-/19	A	34-53	L
1/13	USC*	-/19	A	57-44	W
1/26	Arizona ¹	-/14	N	69-63	W
1/27	San Francisco		A	75-42	W
2/2	UC Santa Barbara	19/-	H	76-55	W
2/3	Pepperdine	19/-	H	75-60	W
2/9	California*		A	60-62	L
2/10	California*		A	61-56	W
2/16	Stanford*		H	56-48	W
2/17	Stanford*		H	90-67	W
2/23	California*		H	75-57	W
2/24	California*		H	62-59	W
3/2	USC*	17/18	H	59-53	W
3/3	USC*	17/18	H	41-43	L
3/5	USC*	17/18	H	49-41	W
3/9	Washington	-/15	A	51-70	L
3/10	Washington	-/15	A	54-71	L

Final Polls: UPI - 16, AP - NR

* Pacific Coast Conference game
1 game played in San Francisco, Calif.

1951-52

Overall: 19-12 PCC: 8-4 (1st-South)

Championships Won: PCC Southern Division

Coach: John Wooden

Date	Opponent	AP Rk	Site	Score	W/L
12/1	Arizona State		H	85-56	W
12/7	Washington		A	52-60	L
12/8	Washington		A	61-76	L
12/14	San Francisco		H	64-55	W
12/15	West Texas State		H	64-57	W
12/21	Denver		H	60-58	W
12/22	Denver		H	60-51	W
12/26	Kentucky	16/1	A	53-84	L
12/28	Illinois	16/2	A	67-73	L
12/29	Bradley		A	67-66	W
1/4	Stanford*		H	81-63	W
1/5	Stanford*		H	71-73	L
1/11	USC*		A	55-48	W
1/12	USC*		A	67-58	W
1/18	California*		A	59-61	L
1/19	California*		A	51-54	L
2/1	Saint Mary's ¹		N	70-62	L
2/2	Santa Clara ¹		N	59-66	L
2/8	Pepperdine		H	72-70	W
2/9	Cal Poly		H	67-40	W
2/15	Stanford*		A	72-68	W
2/16	Stanford*		A	68-77	L
2/22	California*		H	67-54	W
2/23	California*		H	68-42	W
2/29	USC*		H	66-51	W
3/1	USC*		H	63-57	W
3/7	Washington	19/6	H	65-53	W
3/8	Washington	19/6	H	50-53	L
3/10	Washington	19/6	H	60-50	W
3/21	Santa Clara ²	19/-	N	59-68	L
3/22	Oklahoma City ³	19/-	N	53-55	L

Final Polls: UPI - 20 (tied), AP - 19

* Pacific Coast Conference game
1 game played in San Francisco, Calif.
2 NCAA Tournament
3 NCAA Tournament (West Regional, consolation game in Provo, Utah)

1952-53

Overall: 16-8 PCC: 6-6 (3rd-South)

Coach: John Wooden

Date	Opponent	AP Rk	Site	Score	W/L
12/5	Oregon State		A	73-63	W
12/6	Oregon State		A	58-43	W
12/12	Washington		H	49-53	L
12/13	Washington		H	54-47	W
12/19	Michigan State	12/-	A	60-55	W
12/20	Notre Dame ¹	12/7	N	60-68	L
12/22	Bradley	12/-	A	91-83	W
12/26	Oregon State	20/-	H	74-58	W
12/27	Oregon State	20/-	H	69-61	W
1/2	California*		H	68-72	L
1/3	California*		H	66-68	L
1/9	USC*	-/12	H	54-65	L
1/10	USC*	-/12	H	72-62	W
1/16	Stanford*	19/-	A	67-66	W
1/17	Stanford*	19/-	A	74-71	W
1/30	San Diego State		H	77-48	W
2/5	Bradley		H	79-73	W
2/6	UC Santa Barbara		H	91-50	W
2/13	California*	-/19	A	67-63	L
2/14	California*	-/19	A	62-70	L
2/20	Stanford*		H	75-50	W
2/21	Stanford*		H	66-58	W
2/27	USC*		A	65-66	L
2/28	USC*		A	64-76	L

Final Polls: UPI - NR, AP - NR

* Pacific Coast Conference game
1 game played in East Lansing, Mich.

1953-54

Overall: 18-7 PCC: 7-5 (2nd-South)

Coach: John Wooden

Date	Opponent	AP Rk	Site	Score	W/L
12/5	West Texas State		H	79-48	W
12/11	Arizona		H	90-45	W
12/12	Arizona		H	84-48	W
12/18	Denver	17/-	A	70-63	W
12/19	Denver	17/-	A	66-45	W
12/21	La Salle ¹	17/20	N	53-62	L
12/22	Duke ¹	13/-	N	72-67	W
12/26	Oregon	13/-	H	89-74	W
12/28	Oregon	13/-	H	79-53	W
12/30	Iowa	14/-	H	60-65	L
12/31	Michigan State	14/-	H	67-57	W
1/8	California*		A	53-62	L
1/9	California*		A	65-73	L

1/15	USC*		A	65-68	L
1/16	USC*		A	81-63	W
1/29	Pacific		H	66-56	W
1/30	Pepperdine		H	103-68	W
2/5	Stanford*		H	92-73	W
2/6	Stanford*		H	77-58	W
2/12	California*	-/14	H	82-54	W
2/13	California*	-/14	H	71-62	W
2/19	Stanford*		A	92-77	W
2/20	Stanford*		A	88-80	W
2/26	USC*	19/-	H	68-79	L
2/27	USC*	19/-	H	67-69	L

Final Polls: UPI - NR, AP - NR

* Pacific Coast Conference game
1 game played in Lexington, Ky.

1954-55

Overall: 21-5 PCC: 11-1 (1st-South)

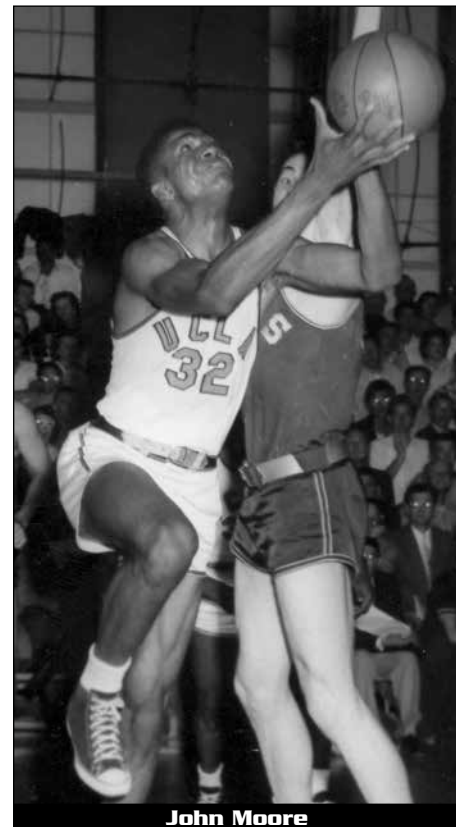
Championships Won: PCC Southern Division

Coach: John Wooden

Date	Opponent	AP Rk	Site	Score	W/L
12/4	Kansas State		H	86-57	W
12/10	Santa Clara	13/-	H	74-39	W
12/11	San Francisco	13/-	H	47-40	W
12/17	Santa Clara	8/-	A	65-58	W
12/18	San Francisco	8/-	A	44-56	L
12/21	Colorado	17/-	H	65-62	W
12/22	New Mexico	17/-	H	106-41	W
12/27	Niagara ¹	17/10	N	88-86	W
12/29	La Salle ¹	15/3	N	77-85	L
12/31	Dayton ¹	15/4	N	104-92	W
1/7	Stanford*	7/-	A	56-61	L
1/8	Stanford*	7/-	A	91-75	W
1/14	USC*	10/18	H	70-67	W
1/15	USC*	10/18	H	76-64	W
1/28	UC Santa Barbara	9/-	H	91-62	W
1/29	Cal Poly	9/-	H	84-55	W
2/4	California*	8/-	H	83-64	W
2/5	California*	8/-	H	84-63	W
2/11	Stanford*	8/-	H	85-63	W
2/12	Stanford*	8/-	H	72-59	W
2/18	California*	9/-	A	55-48	W
2/19	California*	9/-	A	84-76	W
2/25	USC* ²	9/-	A	66-65	W
2/26	USC* ²	9/-	A	75-55	W
3/4	Oregon State	9/14	A	75-82	L
3/5	Oregon State	9/14	A	64-83	L

Final Polls: UPI - 12, AP - 13

* Pacific Coast Conference game
1 game played in New York, N.Y.
2 game played in Long Beach, Calif.



John Moore

YEAR-BY-YEAR RESULTS

1955-56

Overall: 22-6 PCC: 16-0 (1st)

Championships Won: PCC

Coach: John Wooden

Date	Opponent	AP Rk	Site	Score	W/L
12/2	BYU		A	58-75	L
12/3	BYU		A	65-67	L
12/9	Denver ¹	16/-	N	68-40	W
12/10	Purdue ¹	16/-	N	76-60	W
12/16	Nebraska		A	65-71	L
12/17	Wichita State		A	68-76	L
12/26	St. John's ²		A	93-86	W
12/28	Duquesne ²		N	72-57	W
12/30	San Francisco ²	-/1	N	53-70	L
1/6	Idaho*		H	92-73	W
1/7	Idaho*		H	78-61	W
1/13	Washington State*		A	86-72	W
1/14	Washington State*		A	95-70	W
1/28	Arizona State		A	99-79	W
2/3	Washington*	20/-	H	61-60	W
2/4	Washington*	20/-	H	82-75	W
2/10	Stanford*	18/-	A	50-48	W
2/11	Stanford*	18/-	A	81-72	W
2/17	Oregon State*	20/-	A	77-56	W
2/18	Oregon State*	20/-	A	72-59	W
2/24	Oregon*	15/-	H	95-71	W
2/25	Oregon*	15/-	H	108-89	W
3/2	California*	13/-	H	85-80	W
3/3	California*	13/-	H	84-62	W
3/9	USC*	10/-	A	85-70	W
3/10	USC*	10/-	A	97-84	W
3/16	San Francisco ³	10/1	N	61-72	L
3/17	Seattle University ⁴	10/-	N	94-70	W

Final Polls: UPI - 9, AP - 8

* Pacific Coast Conference game

1 game played in Long Beach, Calif.

2 game played in New York, N.Y.

3 NCAA Tournament

4 NCAA Tournament (West Regional, consolation game in Provo, Utah)

1956-57

Overall: 22-4 PCC: 13-3 (T-2nd)

Coach: John Wooden

Date	Opponent	AP Rk	Site	Score	W/L
11/30	Nebraska		H	69-56	W
12/1	Nebraska		H	78-60	W
12/8	Santa Clara ¹		N	60-58	W
12/14	BYU		H	74-69	W
12/15	BYU		H	58-59	L
12/21	Missouri		H	77-54	W
12/22	Occidental		H	93-40	W
12/26	Saint Louis	-/5	A	72-66	W
12/28	Butler		A	82-71	W
12/29	Indiana		A	52-48	W
1/4	Idaho*	8/-	A	64-63	W
1/5	Idaho*	8/-	A	69-68	W
1/11	Washington State*	8/-	H	87-65	W
1/12	Washington State*	8/-	H	83-62	W
2/1	Oregon State* ²	5/-	N	59-37	W
2/2	Oregon State* ²	5/-	N	64-53	W
2/8	Washington*	5/-	A	68-65	W
2/9	Washington*	5/-	A	74-90	L
2/15	Stanford*	7/-	H	86-63	W
2/16	Stanford*	7/-	H	79-61	W
2/22	Oregon*	8/-	A	81-62	W
2/23	Oregon*	8/-	A	73-65	W
2/26	USC*	6/-	H	80-84	L
3/1	California*	6/-	A	71-66	W
3/2	California*	6/-	A	68-73	L
3/5	USC*	7/-	H	65-55	W

Final Polls: UPI - 9 (tied), AP - 14

* Pacific Coast Conference game

1 game played in Bakersfield, Calif.

2 game played in Long Beach, Calif.

1957-58

Overall: 16-10 PCC: 10-6 (3rd)

Coach: John Wooden

Date	Opponent	AP Rk	Site	Score	W/L
12/6	Saint Mary's		H	70-64	W
12/7	Oklahoma		H	65-53	W
12/13	DePauw	13/-	H	82-52	W
12/14	DePauw	13/-	H	73-48	W
12/18	Wichita State	13/-	A	68-83	L
12/20	Bradley	13/11	A	43-67	L
12/21	Evansville	13/-	A	76-83	L
12/27	Michigan State	-/8	H	61-63	L
12/28	Ohio State		H	98-78	W
1/3	Oregon*		A	64-58	W
1/4	Oregon State*	-/18	A	61-68	L
1/10	Oregon*		H	73-64	W
1/11	Idaho*		H	64-56	W

1/17	USC*		H	52-51	W
1/18	USC*		H	80-75	W
1/31	Santa Clara ¹		N	77-56	W
2/7	Washington State*		H	72-64	W
2/8	California*		H	58-61	L
2/14	Washington State*		A	64-44	W
2/15	Idaho*		A	67-73	L
2/17	Washington*		A	67-62	W
2/21	Stanford* ²		N	46-43	W
2/22	Oregon State* ²		N	61-77	L
2/28	California*	-/19	A	50-56	L
3/1	Stanford*		A	50-57	L
3/8	Washington*		H	89-68	W

Final Polls: UPI - NR, AP - NR

1 game played in Bakersfield, Calif.

2 game played in Long Beach, Calif.

1958-59

Overall: 16-9 PCC: 10-6 (T-3rd)

Coach: John Wooden

Date	Opponent	AP Rk	Site	Score	W/L
12/5	Saint Mary's ¹		N	59-62	L
12/6	Santa Clara ¹		N	42-56	L
12/12	Kansas	-/7	H	72-61	W
12/13	Iowa State		H	65-63	W
12/19	Colorado	19/-	H	58-48	W
12/20	Colorado	19/-	H	56-54	W
12/26	Santa Clara		H	47-49	L
12/27	Denver		H	71-57	W
1/2	Idaho*		A	62-53	W
1/3	Washington State*		A	54-71	L
1/5	Washington*		A	63-68	L
1/9	Washington State*		H	68-41	W
1/10	Oregon State*		H	73-62	W
1/16	USC*		H	57-53	W
1/17	USC*		H	65-63	W
1/30	UC Santa Barbara		H	63-59	W
2/6	California*	-/19	H	58-60	L
2/7	Idaho*		H	87-91	L
2/13	Stanford*		A	61-69	L
2/14	California*	-/18	A	51-64	L
2/20	Oregon*		H	70-53	W
2/21	Stanford*		H	64-51	W
2/27	Oregon State*		A	71-59	W
2/28	Oregon*		A	69-62	W
3/6	Washington*		H	56-55	W

Final Polls: UPI - NR, AP - NR

* Pacific Coast Conference game

1 game played in San Francisco, Calif.

1959-60

Overall: 14-12 AAWU: 7-5 (2nd)

Coach: John Wooden

Date	Opponent	AP Rk	Site	Score	W/L
12/1	USC		H	47-45	W
12/4	Kentucky		H	66-68	L
12/5	Santa Clara		H	75-73	W
12/11	BYU		H	62-42	W
12/12	Oklahoma State		H	48-52	L
12/18	Purdue		A	74-75	L
12/19	Butler		A	73-79	L
12/21	Minnesota		A	73-72	W
12/28	Michigan ¹		H	93-68	W
12/29	West Virginia ¹	-/2	H	73-87	L
12/30	USC ¹		H	62-72	L

1/2	Washington*		H	57-55	W
1/4	Washington*		H	55-54	W
1/8	California*	-/2	A	47-59	L
1/15	USC*	-/10	H	63-62	W
1/29	Denver		A	68-71	L
1/30	Air Force		A	76-75	W
2/5	New Mexico State		H	66-56	W
2/6	Stanford*		H	67-54	W
2/12	Stanford*		A	58-52	W
2/13	California*	-/3	A	45-53	L
2/19	Stanford*		H	49-48	W
2/20	California*	-/3	H	57-67	L
2/27	Washington*		A	73-84	L
3/4	USC*		H	71-91	L
3/5	USC*		H	72-70	W

Final Polls: UPI - NR, AP - NR

* Athletic Association of Western Universities (AAWU) game

1 L.A. Classic (at Los Angeles Sports Arena)

1960-61

Overall: 18-8 AAWU: 7-5 (2nd)

Coach: John Wooden

Date	Opponent	AP Rk	Site	Score	W/L
12/2	Oklahoma State		A	58-64	L
12/3	Tulsa		A	94-74	W
12/9	Kansas State		H	83-73	W
12/10	New York University		H	93-69	W
12/16	Notre Dame	13/-	H	85-54	W
12/17	Butler	13/-	H	73-61	W
12/28	Michigan State ¹	16/-	H	98-61	W
12/29	Indiana ¹	16/4	H	94-72	W
12/30	Iowa ¹	16/-	H	65-71	L
1/6	Washington*	9/-	A	45-58	L
1/7	Washington*	9/-	A	62-58	W
1/13	Arizona	10/-	H	90-68	W
1/14	California*	10/-	H	54-46	W
1/27	Denver		H	85-64	W
1/28	Air Force		H	89-78	W
2/3	USC*	-/9	H	63-78	L
2/4	USC*	-/9	H	86-83	W
2/11	Stanford*		A	65-79	L
2/17	Kentucky		A	76-77	L
2/18	Loyola-Chicago		A	87-82	W
2/24	California*		A	65-66	L
2/25	Stanford*		A	70-56	W
3/3	USC*	-/10	H	85-86	L
3/4	Washington*		H	84-58	W
3/10	Stanford*		H	69-55	W
3/11	California*		H	59-55	W

Final Polls: UPI - NR, AP - NR

* Athletic Association of Western Universities (AAWU) game

1 L.A. Classic (at Los Angeles Sports Arena)

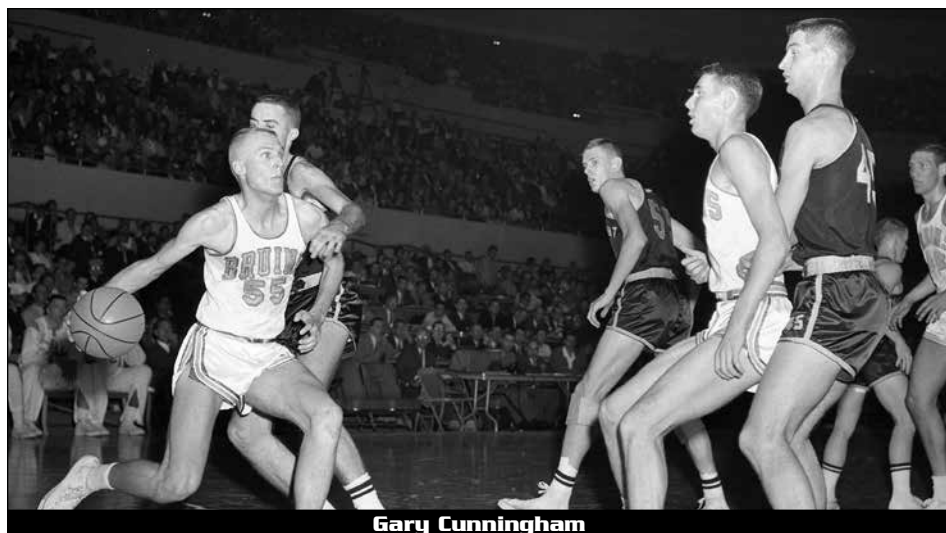
1961-62

Overall: 18-11 AAWU: 10-2 (1st)

Championships Won: NCAA Far West Regional, AAWU

Coach: John Wooden

Date	Opponent	AP Rk	Site	Score	W/L
12/1	BYU		A	66-68	L
12/2	BYU		A	83-86	L
12/9	Kansas		H	69-61	W
12/15	DePauw		H	91-62	W
12/16	Colorado State		H	68-69	L
12/20	Creighton		A	72-74	L
12/22	Houston		A	65-91	L



Gary Cunningham

YEAR-BY-YEAR RESULTS

12/23	Texas ASM ¹	N	81-71	W
12/27	Army ²	H	86-72	W
12/28	Ohio State ²	-/1	H 84-105	L
12/29	Utah ²	H	79-88	L
1/5	Washington*	H	72-57	W
1/6	Washington*	H	75-63	W
1/13	California*	A	71-60	W
1/26	Texas Tech ³	H	89-60	W
1/27	Texas Tech ³	H	87-58	W
2/2	USC*	-/5	H 73-59	W
2/10	Stanford* ³	H	82-64	W
2/16	USC*	H	60-74	L
2/17	USC*	H	69-62	W
2/23	California*	H	68-62	W
2/24	Stanford*	H	75-65	W
3/2	Washington*	A	69-66	W
3/9	Stanford*	A	67-82	L
3/10	California*	A	66-54	W
3/16	Utah State ⁴	N	73-62	W
3/17	Oregon State ⁴	N	88-69	W
3/23	Cincinnati ⁵	-/2	N 70-72	L
3/24	Wake Forest ⁵	N	80-82	L

Final Polls: UPI - 17, AP - 19

* Athletic Association of Western Universities (AAWU) game

1 game played in Houston, Texas

2 L.A. Classic (at Los Angeles Sports Arena)

3 UCLA home game played at Santa Monica City College

4 NCAA Tournament

5 NCAA Tournament (Final Four)

6 NCAA Tournament (Final Four, consolation game)

1962-63

Overall: 20-9 AAWU: 8-5 (T-1st)

Championships Won: Co-AAWU, L.A. Classic

Coach: John Wooden

Date	Opponent	AP Rk	Site	Score	W/L
11/30	Denver		H	70-41	W
12/1	Santa Clara ¹		H	66-41	W
12/7	Colorado		A	60-82	L
12/8	Colorado State		A	65-66	L
12/14	Oklahoma ²		H	101-64	W
12/15	Missouri ²		H	72-55	W
12/18	Butler		A	81-68	W
12/20	Northwestern		A	70-63	W
12/22	Wisconsin		A	77-63	W
12/26	Utah State ³		H	89-75	W
12/28	Saint Louis ³		H	85-66	W
12/29	Colorado State ³		H	68-64	W
1/4	Washington*	9/-	A	61-62	L
1/5	Washington*	9/-	A	63-67	L
1/12	California* ²		H	63-58	W
1/25	Texas Tech		A	83-63	W
1/26	Texas Tech		A	103-80	W
2/1	USC*		H	77-65	W
2/2	USC*		H	86-72	W
2/9	Stanford*	-/10	A	78-86	L
2/22	Stanford*		A	69-73	L
2/23	California*		A	64-57	W
3/1	USC*		H	60-62	L
3/2	Washington* ²		H	80-52	W
3/8	Stanford* ²	-/9	H	64-54	W
3/9	California* ²		H	72-53	W
3/13	Stanford* ²		H	51-45	W
3/15	Arizona State ⁴	-/4	N	79-93	L
3/16	San Francisco ⁵		N	75-76	L

(Final Polls: UPI - 15; AP - NR)

* Athletic Association of Western Universities (AAWU) game

1 UCLA home game played in Men's Gym (on campus)

2 UCLA home game played at Santa Monica City College

3 L.A. Classic (at Los Angeles Sports Arena)

4 NCAA Tournament

5 NCAA Tournament (West Regional, consolation game in Provo, Utah)

1963-64

Overall: 30-0 AAWU: 15-0 (1st)

Championships Won: NCAA, AAWU, L.A. Classic

Coach: John Wooden

Date	Opponent	AP Rk	Site	Score	W/L
12/6	BYU		H	113-71	W
12/7	Butler		H	80-65	W
12/13	Kansas State ¹		N	78-75	W
12/14	Kansas ²		N	74-54	W
12/20	Baylor ³	6/-	N	112-61	W
12/21	Creighton ³	6/-	N	95-79	W
12/26	Yale ⁴	4/-	H	95-65	W
12/27	Michigan ⁴	4/3	H	98-80	W
12/28	Illinois ⁴	4/-	H	83-79	W
1/3	Washington State*	2/-	A	88-83	W
1/4	Washington State*	2/-	A	121-77	W
1/10	USC*	1/-	H	79-59	W
1/11	USC*	1/-	H	78-71	W
1/17	Stanford*	1/-	H	84-71	W
1/18	Stanford* ⁵	1/-	H	80-61	W

1/31	UC Santa Barbara	1/-	A	107-76	W
2/1	UC Santa Barbara ⁵	1/-	H	87-59	W
2/7	California*	1/-	A	87-67	W
2/8	California*	1/-	A	58-56	W
2/14	Washington*	1/-	H	73-58	W
2/15	Washington*	1/-	H	88-60	W
2/22	Stanford*	1/-	A	100-88	W
2/24	Washington*	1/-	A	78-64	W
2/29	Washington State*	1/-	H	93-56	W
3/2	California*	1/-	H	87-57	W
3/6	USC*	1/-	H	91-81	W
3/13	Seattle ⁶	1/-	N	95-90	W
3/14	San Francisco ⁶	1/-	N	76-72	W
3/20	Kansas State ⁷	1/-	N	90-84	W
3/21	Duke ⁷	1/3	N	98-83	W

Final Polls: UPI - 1, AP - 1

* Athletic Association of Western Universities (AAWU) game

1 game played in Lawrence, Kan.

2 game played in Manhattan, Kan.

3 game played in Long Beach, Calif.

4 L.A. Classic (Los Angeles Sports Arena)

5 UCLA home game played at Santa Monica City College

6 NCAA Tournament

7 NCAA Tournament (Final Four)

1964-65

Overall: 28-2 AAWU: 14-0 (1st)

Championships Won: NCAA, AAWU, L.A. Classic, Milwaukee Classic

Coach: John Wooden

Date	Opponent	AP Rk	Site	Score	W/L
12/4	Illinois	2/-	A	83-110	L
12/5	Indiana State	2/-	A	112-76	W
12/11	Arizona State	7/-	H	107-76	W
12/12	Oklahoma State	7/-	H	68-52	W
12/18	Marquette ¹	5/-	A	61-52	W
12/19	Boston College ¹	5/-	N	115-93	W
12/22	USC	4/-	A	84-75	W
12/28	Arizona ²	4/-	H	99-79	W
12/29	Minnesota ²	4/-	H	93-77	W
12/30	Utah ²	4/-	H	104-74	W
1/8	Oregon*	1/-	A	91-74	W
1/9	Oregon State*	1/-	A	83-53	W
1/15	California*	1/-	H	76-54	W
1/16	Stanford*	1/-	H	80-66	W
1/29	Iowa ³	1/-	N	82-87	L
1/30	Loyola-Chicago	1/-	A	85-72	W
2/5	Washington State*	2/-	H	93-41	W
2/6	Washington*	2/-	H	78-75	W
2/12	Washington*	2/-	A	83-73	W
2/13	Washington State*	2/-	A	70-68	W
2/19	Oregon State*	2/-	H	73-55	W
2/20	Oregon*	2/-	H	74-64	W
2/26	Stanford*	2/-	A	83-67	W
2/27	California*	2/-	A	83-68	W
3/5	USC*	2/-	H	77-71	W
3/6	USC*	2/-	H	52-50	W
3/12	BYU ⁴	2/-	A	100-76	W
3/13	San Francisco ⁴	2/-	N	101-93	W
3/19	Wichita State ⁵	2/-	N	108-89	W
3/20	Michigan ⁵	2/1	N	91-80	W

Final Polls: UPI - 2, AP - 2

* Athletic Association of Western Universities (AAWU) game

1 Milwaukee Classic (Milwaukee, Wis.)

2 L.A. Classic (Los Angeles Sports Arena)

3 game played at Chicago Stadium (Chicago, Ill.)

4 NCAA Tournament

5 NCAA Tournament (Final Four)

1965-66

Overall: 18-8 AAWU: 10-4 (2nd)

Championships Won: Los Angeles Classic

Coach: John Wooden

Date	Opponent	AP Rk	Site	Score	W/L
12/3	Ohio State	1/-	H	92-66	W
12/4	Illinois	1/-	H	97-79	W
12/10	Duke	1/6	A	66-82	L
12/11	Duke ¹	1/6	N	75-94	L
12/17	Kansas	8/4	H	78-71	W
12/18	Cincinnati ²	8/-	N	76-82	L
12/21	USC		A	86-67	W
12/27	LSU ²		N	95-89	W
12/29	Purdue ²		N	82-70	W
12/30	USC ²		A	94-76	W
1/7	Oregon State*	10/-	H	79-35	W
1/8	Oregon*	10/-	H	97-65	W
1/14	California*	9/-	A	75-66	W
1/15	Stanford*	9/-	A	69-74	L
1/28	Loyola-Chicago	10/7	A	96-102	L
1/31	Arizona*	10/-	H	84-67	W
2/5	Washington State*		A	83-84	L
2/7	Washington*		A	89-67	W
2/11	Washington State*		H	88-61	W
2/12	Washington*		H	100-71	W



Jack Hirsch

2/18	Oregon State*	A	51-64	L
2/19	Oregon*	A	72-79	L
2/25	California*	H	95-79	W
2/26	Stanford*	H	70-58	W
3/4	USC*	H	94-79	W
3/5	USC*	A	99-62	W

Final Polls: UPI - NR, AP - NR

* Athletic Association of Western Universities (AAWU) game

1 game played in Charlotte, N.C.

2 L.A. Classic (Los Angeles Sports Arena)

1966-67

Overall: 30-0 AAWU: 14-0 (1st)

Championships Won: NCAA, AAWU, L.A. Classic

Coach: John Wooden

Date	Opponent	AP Rk	Site	Score	W/L
12/3	USC	1/-	H	105-90	W
12/9	Duke	1/7	H	88-54	W
12/10	Duke	1/7	H	107-87	W
12/22	Colorado State	1/-	H	84-74	W
12/23	Notre Dame	1/-	H	96-67	W
12/28	Wisconsin ¹	1/-	H	100-56	W
12/29	Georgia Tech ¹	1/-	H	91-72	W
12/30	USC ¹	1/-	H	107-83	W
1/7	Washington State*	1/-	A	76-67	W
1/9	Washington*	1/-	A	83-68	W
1/13	California*	1/-	H	96-78	W
1/14	Stanford*	1/-	H	116-78	W
1/20	Portland	1/-	H	122-57	W
1/21	UC Santa Barbara	1/-	H	119-75	W
1/28	Loyola-Chicago	1/-	A	82-67	W
1/29	Illinois ²	1/-	A	120-82	W
2/4	USC*	1/-	A (OT)	40-35	W
2/10	Oregon State*	1/-	H	76-44	W
2/11	Oregon*	1/-	H	100-66	W
2/17	Oregon*	1/-	A	34-25	W
2/18	Oregon State*	1/-	A	72-50	W
2/24	Washington*	1/-	H	71-43	W
2/25	Washington State*	1/-	H	100-78	W
3/3	Stanford*	1/-	A	75-47	W
3/4	California*	1/-	A	103-66	W
3/11	USC*	1/-	H	83-55	W
3/17	Wyoming ³	1/-	N	109-60	W
3/18	Pacific ³	1/-	N	80-64	W
3/24	Houston ⁴	1/7	N	73-58	W
3/25	Dayton ⁴	1/-	N	79-64	W

Final Polls: UPI - 1, AP - 1

* Athletic Association of Western Universities (AAWU) game

1 L.A. Classic (Los Angeles Sports Arena)

2 game played at Chicago Stadium (Chicago, Ill.)

3 NCAA Tournament

4 NCAA Tournament (Final Four)

1967-68

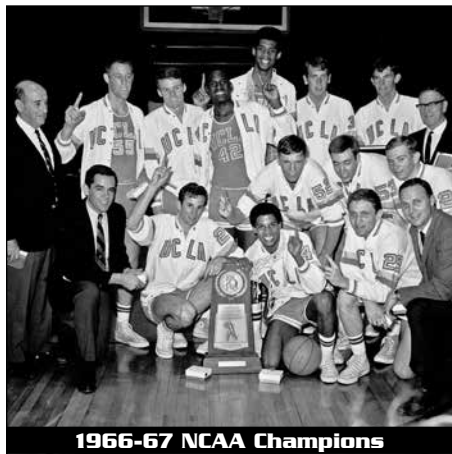
Overall: 29-1 AAWU: 14-0 (1st)

Championships Won: NCAA, AAWU, L.A. Classic

Coach: John Wooden

Date	Opponent	AP Rk	Site	Score	W/L
12/2	Purdue	1/-	A	73-71	W
12/8	Wichita				

YEAR-BY-YEAR RESULTS



1966-67 NCAA Champions

2/9	Oregon State*	2/-	A	55-52	W
2/10	Oregon*	2/-	A	104-63	W
2/16	Oregon*	2/-	H	119-78	W
2/17	Oregon State*	2/-	H	88-71	W
2/24	Washington*	2/-	A	84-64	W
2/26	Washington State*	2/-	A	101-70	W
3/1	Stanford*	2/-	H	100-62	W
3/2	California*	2/-	H	115-71	W
3/9	USC*	2/-	A	72-64	W
3/15	New Mexico State ⁴	2/-	N	58-49	W
3/16	Santa Clara ⁴	2/-	N	87-66	W
3/22	Houston ⁵	2/1	N	101-69	W
3/23	North Carolina ⁵	2/4	N	78-55	W

Final Polls: UPI - 2, AP - 2

- * Athletic Association of Western Universities (AAUW) game
- 1 L.A. Classic (Los Angeles Sports Arena)
- 2 game played at Houston Astrodome (Houston, Texas)
- 3 game played at Madison Square Garden (New York, N.Y.)
- 4 NCAA Tournament
- 5 NCAA Tournament (Final Four)

1968-69

Overall: 29-1 Pacific-8: 13-1 (1st)

Championships Won: NCAA, Pacific-8, ECAC Holiday Festival

Coach: John Wooden

Date	Opponent	AP Rk	Site	Score	W/L
11/30	Purdue	1/10	H	94-82	W
12/6	Ohio State	1/13	A	84-73	W
12/7	Notre Dame	1/5	A	88-75	W
12/20	Minnesota	1/-	H	90-51	W
12/21	West Virginia	1/-	H	95-56	W
12/27	Providence ¹	1/-	N	98-81	W
12/28	Princeton ¹	1/-	N	83-67	W
12/30	St. John's ¹	1/-	A	74-56	W
1/4	Tulane	1/-	H	96-64	W
1/10	Oregon*	1/-	A	93-64	W
1/11	Oregon State*	1/-	A	83-64	W
1/18	Houston	1/-	H	100-64	W
1/24	Northwestern ²	1/-	N	81-67	W
1/25	Loyola-Chicago	1/-	A	84-65	W
1/31	California*	1/-	H	109-74	W
2/1	Stanford*	1/-	H	98-61	W
2/7	Washington*	1/-	H	62-51	W
2/8	Washington State*	1/-	H	108-80	W
2/15	Washington State*	1/-	A	83-59	W
2/17	Washington*	1/-	A	53-44	W
2/21	Oregon State*	1/-	H	91-66	W
2/22	Oregon*	1/-	H	103-69	W
2/28	Stanford*	1/-	A	81-60	W
3/1	California*	1/-	A	84-77	W
3/7	USC*	1/-	A (201)	61-55	W
3/8	USC*	1/-	H	44-46	L
3/13	New Mexico State ³	1/12	H	53-38	W
3/15	Santa Clara ³	1/3	H	90-52	W
3/20	Drake ⁴	1/11	N	85-82	W
3/22	Purdue ⁴	1/6	N	92-72	W

Final Polls: UPI - 1, AP - 1

- * Pac-8 Conference game
- 1 ECAC Holiday Festival (New York, N.Y.)
- 2 game played at Chicago Stadium (Chicago, Ill.)
- 3 NCAA Tournament
- 4 NCAA Tournament (Final Four)

1969-70

Overall: 28-2 Pacific-8: 12-2 (1st)

Championships Won: NCAA, Pacific-8, Bruin Classic

Coach: John Wooden

Date	Opponent	AP Rk	Site	Score	W/L
12/1	Arizona	4/-	H	90-65	W
12/6	Minnesota	4/-	A	72-71	W
12/12	Miami (Florida)	2/-	H	127-69	W
12/13	LSU	2/-	H	133-84	W
12/23	Texas	2/-	H	99-54	W
12/27	Georgia Tech ¹	2/-	H	121-90	W
12/29	Princeton ¹	2/-	H	76-75	W
1/3	Notre Dame	2/13	H	108-77	W
1/9	Oregon*	1/-	H	75-58	W
1/10	Oregon State*	1/-	H	72-71	W
1/16	Bradley ²	1/-	N	61-58	W
1/17	Loyola-Chicago	1/-	A	94-72	W
1/23	UC Santa Barbara	1/-	H	89-80	W
1/24	Wyoming	1/-	H	115-77	W
1/30	California*	1/-	A	87-72	W
1/31	Stanford*	1/-	A	102-84	W
2/7	Washington*	1/-	A	66-56	W
2/9	Washington State*	1/-	A	72-70	W
2/13	Washington State*	1/-	H	95-61	W
2/14	Washington*	1/-	H	101-85	W
2/20	Oregon State*	1/-	A	71-56	W
2/21	Oregon*	1/-	A	65-78	L
2/27	Stanford*	2/-	H	120-90	W
2/28	California*	2/-	H	109-95	W
3/6	USC*	1/-	H	86-87	L
3/7	USC*	1/-	A	91-78	W
3/12	Long Beach State ³	2/-	N	88-65	W
3/14	Utah State ³	2/16	N	101-79	W
3/19	New Mexico St. ⁴	2/5	N	93-77	W
3/21	Jacksonville ⁴	2/4	N	80-69	W

Final Polls: UPI - 2, AP - 2

- * Pac-8 Conference game
- 1 Bruin Classic (Pauley Pavilion)
- 2 game played at Chicago Stadium (Chicago, Ill.)
- 3 NCAA Tournament
- 4 NCAA Tournament (Final Four)

1970-71

Overall: 29-1 Pacific-8: 14-0 (1st)

Championships Won: NCAA, Pacific-8, Steel Bowl

Coach: John Wooden

Date	Opponent	AP Rk	Site	Score	W/L
12/4	Baylor	1/-	H	108-77	W
12/5	Rice	1/-	H	124-78	W
12/11	Pacific	1/-	H	100-88	W
12/12	Tulsa	1/-	H	95-75	W
12/22	Missouri	1/-	H	94-75	W
12/23	Saint Louis	1/-	H	79-65	W
12/29	William and Mary ¹	1/-	N	90-71	W
12/30	Pittsburgh ¹	1/-	A	77-65	W
1/2	Dayton	1/-	H	106-82	W
1/8	Washington*	1/-	H	78-69	W
1/9	Washington State*	1/-	H	95-71	W
1/15	Stanford*	1/-	A	58-53	W
1/16	California*	1/-	A	94-76	W
1/22	Loyola-Chicago	1/-	A	87-62	W
1/23	Notre Dame	1/9	A	82-89	L
1/30	UC Santa Barbara	2/-	H	74-61	W
2/6	USC*	3/2	A	64-60	W
2/12	Oregon*	1/-	A	69-68	W
2/13	Oregon State*	1/-	A	67-65	W
2/19	Oregon State*	1/-	H	94-64	W
2/20	Oregon*	1/-	H	74-67	W
2/27	Washington State*	1/-	A	57-53	W
3/1	Washington*	1/-	A	71-69	W
3/5	California*	1/-	H	103-69	W
3/6	Stanford*	1/-	H	107-72	W
3/13	USC*	1/3	H	73-62	W
3/18	BYU ²	1/20	N	91-73	W
3/20	Long Beach State ²	1/16	N	57-55	W
3/25	Kansas ³	1/4	N	68-60	W
3/27	Villanova ³	1/19	N	68-62	W

Final Polls: UPI - 1, AP - 1

- * Pac-8 Conference game
- 1 Steel Bowl (Pittsburgh, Pa.)
- 2 NCAA Tournament
- 3 NCAA Tournament (Final Four)

1971-72

Overall: 30-0 Pacific-8: 14-0 (1st)

Championships Won: NCAA, Pacific-8, Bruin Classic

Coach: John Wooden

Date	Opponent	AP Rk	Site	Score	W/L
12/3	The Citadel	1/-	H	105-49	W
12/4	Iowa	1/-	H	106-72	W
12/10	Iowa State	1/-	H	110-81	W
12/11	Texas A&M	1/-	H	117-53	W

12/22	Notre Dame	1/-	H	114-56	W
12/23	TCU	1/-	H	119-81	W
12/29	Texas ¹	1/-	H	115-65	W
12/30	Ohio State ¹	1/6	H	79-53	W
1/7	Oregon State*	1/-	A	78-72	W
1/8	Oregon*	1/-	A	93-68	W
1/14	Stanford*	1/-	H	118-79	W
1/15	California*	1/-	H	82-43	W
1/21	Santa Clara	1/-	H	92-57	W
1/22	Denver	1/-	H	108-61	W
1/28	Loyola-Chicago	1/-	A	92-64	W
1/29	Notre Dame	1/-	A	57-32	W
2/5	USC*	1/-	H	81-56	W
2/11	Washington State*	1/-	H	89-58	W
2/12	Washington*	1/-	H	109-70	W
2/19	Washington*	1/-	A	100-83	W
2/21	Washington State*	1/-	A	85-55	W
2/25	Oregon*	1/-	H	92-70	W
2/26	Oregon State*	1/-	H	91-72	W
3/3	California*	1/-	A	85-71	W
3/4	Stanford*	1/-	A	102-73	W
3/10	USC*	1/-	A	79-66	W
3/16	Weber State ²	1/-	N	90-58	W
3/18	Long Beach State ²	1/5	N	73-57	W
3/23	Louisville ³	1/4	N	96-77	W
3/25	Florida State ³	1/10	N	81-76	W

Final Polls: UPI - 1, AP - 1

- * Pac-8 Conference game
- 1 Bruin Classic (Pauley Pavilion)
- 2 NCAA Tournament
- 3 NCAA Tournament (Final Four)

1972-73

Overall: 30-0 Pacific-8: 14-0 (1st)

Championships Won: NCAA, Pac-8, Sugar Bowl Tourney

Coach: John Wooden

Date	Opponent	AP Rk	Site	Score	W/L
11/25	Wisconsin	1/-	H	94-53	W
12/1	Bradley	1/-	H	73-38	W
12/2	Pacific	1/-	H	81-48	W
12/16	UC Santa Barbara	1/-	H	98-67	W
12/22	Pittsburgh	1/-	H	89-73	W
12/23	Notre Dame	1/-	H	82-56	W
12/29	Drake ¹	1/-	N	85-72	W
12/30	Illinois ¹	1/-	N	71-64	W
1/5	Oregon*	1/-	H	64-38	W
1/6	Oregon State*	1/-	H	87-61	W
1/12	Stanford*	1/-	A	82-67	W
1/13	California*	1/-	A	69-50	W
1/19	San Francisco	1/10	H	92-64	W
1/20	Providence	1/9	H	101-77	W
1/25	Loyola-Chicago	1/-	A	87-73	W
1/27	Notre Dame	1/-	A	82-63	W
2/3	USC*	1/20	A	79-56	W
2/10	Washington State*	1/-	A	88-50	W
2/12	Washington*	1/-	A	76-67	W
2/16	Washington*	1/-	H	93-62	W
2/17	Washington State*	1/-	H	96-64	W
2/22	Oregon*	1/-	A	72-61	W
2/24	Oregon State*	1/-	A	73-67	W
3/2	California*	1/-	H	90-65	W
3/3	Stanford*	1/-	H	51-45	W
3/10	USC*	1/-	H	76-56	W
3/15	Arizona State ²	1/16	H	98-81	W
3/17	San Francisco ²	1/20	H	54-39	W
3/24	Indiana ³	1/6	N	70-59	W
3/26	Memphis ³	1/-	N	87-66	W

Final Polls: UPI - 1, AP - 1

- * Pac-8 Conference game
- 1 Sugar Bowl Tournament (New Orleans, La.)
- 2 NCAA Tournament
- 3 NCAA Tournament (Final Four)

1973-74

Overall: 26-4 Pacific-8: 12-2 (1st)

Championships Won: Pacific-8, Bruin Classic

Coach: John Wooden

Date	Opponent	AP Rk	Site	Score	W/L
11/30	Arkansas	1/-	H	101-79	W
12/1	Maryland	1/4	H	65-64	W
12/8	SMU	1/-	H	77-60	W
12/15	N.C. State ¹	1/2	N	84-66	W
12/21	Ohio	1/-	H	110-63	W
12/22	St. Bonaventure	1/-	H	111-59	W
12/28	Wyoming ²	1/-	H	86-58	W
12/29	Michigan ²	1/-	H	90-70	W
1/5	Washington*	1/-	A	100-48	W
1/7	Washington State*	1/-	A	55-45	W
1/11	California*	1/-	H	92-56	W
1/12	Stanford*	1/-	H	66-52	W
1/17	Iowa ³	1/-	N	68-44	W
1/19	Notre Dame	1/2	A	70-71	L

YEAR-BY-YEAR RESULTS

1/25	Santa Clara	2/-	H	96-54	W
1/26	Notre Dame	2/1	H	94-75	W
2/2	USC*	1/11	H	65-54	W
2/8	Oregon*	1/-	H	84-66	W
2/9	Oregon State*	1/-	H	80-75	W
2/15	Oregon State*	1/-	A	57-61	L
2/16	Oregon*	1/-	A	51-56	L
2/22	Washington State*	3/-	H	93-68	W
2/23	Washington*	3/-	H	99-65	W
3/1	California* ⁴	3/-	A	83-60	W
3/2	Stanford*	3/-	A	62-60	W
3/9	USC*	3/7	A	82-52	W
3/14	Dayton ⁵	2/20	N (307)	111-100	W
3/16	San Francisco ⁵	2/-	N	83-60	W
3/23	N.C. State ⁵	2/10	N (207)	77-80	L
3/25	Kansas ⁷	2/6	N	78-61	W

Final Polls: UPI - 2, AP - 2

* Pac-8 Conference game

1 game played in St. Louis, Mo.

2 Bruin Classic (Pauley Pavilion)

3 game played in Chicago, Ill.

4 game played in Oakland, Calif.

5 NCAA Tournament

6 NCAA Tournament (Final Four)

7 NCAA Tournament (Final Four, consolation game)

1974-75

Overall: 28-3 **Pacific-8: 12-2 (1st)**

Championships Won: NCAA, Pacific-8, Maryland Invite

Coach: John Wooden

Date	Opponent	AP Rk	Site	Score	W/L
11/29	Wichita State	2/-	H	85-74	W
11/30	DePaul	2/-	H	79-64	W
12/6	Loyola-Chicago	2/-	H	84-67	W
12/7	Oklahoma State	2/-	H	82-51	W
12/20	Memphis	3/-	H	113-94	W
12/21	Notre Dame	3/12	H	85-72	W
12/27	St. Bonaventure ¹	3/-	N	78-62	W
12/28	Maryland ¹	3/5	A	81-75	W
1/3	Davidson	3/-	H	91-64	W
1/4	Oklahoma	3/-	H	111-66	W
1/9	Washington*	2/-	H	92-82	W
1/11	Washington State*	2/-	H	77-69	W
1/17	Stanford*	2/-	A	60-64	L
1/18	California*	2/-	A	102-72	W
1/23	UC Santa Barbara	4/-	H	104-76	W
1/25	Notre Dame	4/-	A	78-84	L
2/1	USC*	4/6	H	89-84	W
2/7	Oregon State*	2/-	A	67-60	W
2/8	Oregon*	2/9	A	107-103	W
2/14	Oregon*	2/13	H	96-66	W
2/15	Oregon State*	2/17	H	74-62	W
2/20	Washington State*	2/-	A	69-61	W
2/22	Washington*	2/-	A	81-103	L
2/28	California*	5/-	H	51-47	W
3/1	Stanford*	5/-	H	93-59	W
3/8	USC*	4/-	A	72-68	W
3/15	Michigan ²	2/-	N (OT)	103-91	W
3/20	Montana ²	2/-	N	67-64	W
3/22	Arizona State ²	2/7	N	89-75	W
3/29	Louisville ³	1/4	N (OT)	75-74	W
3/31	Kentucky ³	1/2	N	92-85	W

Final Polls: UPI - 2, AP - 1

* Pac-8 Conference game

1 Maryland Invitational (College Park, Md.)

2 NCAA Tournament

3 NCAA Tournament (Final Four)

1975-76

Overall: 28-4 **Pacific-8: 13-1 (1st)**

Championships Won: Pacific-8, Bruin Classic

Coach: Gene Bartow

Date	Opponent	AP Rk	Site	Score	W/L
11/29	Indiana ¹	2/1	N	64-84	L
12/5	San Jose State	5/-	H	90-60	W
12/6	Southern Illinois	5/-	H	81-60	W
12/15	San Diego State	5/-	H	101-86	W
12/18	Missouri	6/-	H	83-71	W
12/20	Seattle University	6/-	H	106-72	W
12/23	Baylor	4/-	H	96-75	W
12/29	Santa Clara ²	4/-	H	52-48	W
12/30	Purdue ²	4/-	H	99-86	W
1/2	Denver	4/-	H	111-79	W
1/3	Notre Dame	4/5	H	86-70	W
1/8	Oregon*	3/-	A	62-61	W
1/10	Oregon State*	3/-	A	58-75	W*
1/16	Stanford*	8/-	H	68-67	W
1/17	California*	8/-	H	80-71	W
1/22	UC Santa Barbara	6/-	H	64-50	W
1/24	Notre Dame	6/15	A	85-95	L
1/31	USC*	12/-	H	68-62	W
2/5	Washington*	9/6	A	92-87	W
2/7	Washington State*	9/-	A	91-71	W

2/12	Washington State*	6/-	H	104-78	W
2/14	Washington*	6/9	H	78-76	W
2/19	Oregon State*	5/-	H	78-69	W
2/21	Oregon*	5/-	H	45-65	L
2/27	California*	9/-	A	113-93	W
2/28	Stanford*	9/-	A	120-74	W
3/6	USC*	7/-	A	87-73	W
3/13	San Diego State ³	6/-	N	74-64	W
3/18	Pepperdine ³	5/20	H	70-61	W
3/20	Arizona ⁴	5/15	H	82-66	W
3/27	Indiana ⁴	5/1	N	51-65	L
3/29	Rutgers ⁵	5/4	N	106-92	W

(Final Polls: UPI - 5, AP - 5)

* Pac-8 Conference game

1 game played in St. Louis, Mo.

2 Bruin Classic (Pauley Pavilion)

3 NCAA Tournament

4 NCAA Tournament (Final Four)

5 NCAA Tournament (Final Four, consolation game)

1976-77

Overall: 24-5 **Pacific-8: 11-3 (1st)**

Championships Won: Pacific-8

Coach: Gene Bartow

Date	Opponent	AP Rk	Site	Score	W/L
11/26	San Diego State	4/-	H	74-64	W
11/27	DePaul	4/18	H	76-69	W
12/1	Jacksonville	3/-	H	99-68	W
12/11	Notre Dame	3/7	H	63-66	L
12/17	Rice	9/-	H	107-60	W
12/18	Tulsa	9/-	H	110-85	W
12/22	San Jose State	8/-	H	89-74	W
12/23	William and Mary	8/-	H	59-55	W
12/28	SMU	8/-	H	99-71	W
12/29	Utah State	8/-	H	88-68	W
1/2	Houston	8/-	H	96-83	W
1/7	Oregon*	7/-	H	60-61	L
1/8	Oregon State*	7/-	H	83-66	W
1/13	California*	12/-	A	82-74	W
1/15	Stanford*	12/-	A	100-86	W
1/23	Notre Dame	10/-	A	70-65	W
1/28	USC*	8/-	H	77-59	W
1/30	Tennessee ¹	8/7	N	103-89	W
2/3	Washington*	2/-	H	75-65	W
2/5	Washington State*	2/-	H	72-59	W
2/10	Washington State*	2/-	A	65-62	W
2/12	Washington*	2/-	A	73-78	L
2/17	Oregon State*	3/-	A	89-76	W
2/19	Oregon*	3/-	A	55-65	L
2/24	Stanford*	5/-	H	114-83	W
2/26	California*	5/-	H	91-69	W
3/5	USC*	4/-	A	78-69	W
3/12	Louisville ²	2/14	N	87-79	W
3/17	Idaho State ²	2/-	N	75-76	L

Final Polls: UPI - 4, AP - 2

* Pac-8 Conference game

1 game played in Atlanta, Ga.

2 NCAA Tournament

1977-78

Overall: 25-3 **Pacific-8: 14-0 (1st)**

Championships Won: Pacific-8

Coach: Gary Cunningham

Date	Opponent	AP Rk	Site	Score	W/L
11/26	BYU	6/-	H	75-73	W
11/27	Seattle University	6/-	H	106-73	W
12/2	Colorado	6/-	H	104-70	W
12/3	Santa Clara	6/-	H	88-79	W
12/10	Notre Dame	5/3	H	66-69	L
12/16	Southern Illinois	8/-	H	90-75	W
12/17	UC Santa Barbara	8/-	H	71-55	W
12/22	San Jose State	7/-	H	109-69	W
12/23	New Mexico State	7/-	H	86-67	W
12/29	Arizona	8/-	H	85-63	W
1/6	Washington*	7/-	A	79-60	W
1/8	Washington State*	7/-	A	70-55	W
1/13	Oregon*	7/-	H	90-72	W
1/14	Oregon State*	7/-	H	77-60	W
1/22	Notre Dame	3/7	A	73-75	L
1/28	USC*	6/-	H	83-71	W
2/2	Stanford*	5/-	H	101-64	W
2/4	California*	5/-	H	94-75	W
2/10	California*	5/-	A	78-64	W
2/11	Stanford*	5/-	A	79-63	W
2/17	Washington State*	4/-	H	60-59	W
2/18	Washington*	4/-	H	104-64	W
2/23	Oregon State*	3/-	A	96-58	W
2/25	Oregon*	3/-	A	83-57	W
3/3	USC*	2/-	A	91-78	W
3/5	Michigan	2/-	H	96-70	W
3/11	Kansas ¹	2/9	N	83-76	W
3/16	Arkansas ¹	2/5	N	70-74	L

Final Polls: UPI - 2, AP - 2

* Pac-8 Conference game

1 NCAA Tournament

1978-79

Overall: 25-5 **Pac-10: 15-3 (1st)**

Championships Won: Pac-10

Coach: Gary Cunningham

Date	Opponent	AP Rk	Site	Score	W/L
11/24	Boise State	2/-	H	79-59	W
11/25	DePaul	2/-	H	108-85	W
12/2	Santa Clara	2/-	H	87-73	W
12/9	Notre Dame	2/3	H	78-81	L
12/16	San Diego State	5/-	H	97-73	W
12/22	Fordham	3/-	H	95-64	W
12/23	Boston College	3/-	H	103-81	W
12/27	Stanford*	3/-	A	72-75	L
12/28	California*	3/-	A	95-67	W
1/4	Oregon State*	6/-	H	65-63	W
1/6	Rutgers	6/-	H	78-57	W
1/8	Oregon*	6/-	H	74-71	W
1/13	USC*	6/-	A	89-86	W
1/18	Arizona*	3/-	A	69-70	L
1/20	Arizona State*	3/-	A	95-79	W
1/25	Washington State*	6/-	H	89-71	W
1/27	Washington*	6/-	H	86-61	W
2/1	Oregon*	6/-	A	65-58	W
2/3	Oregon State*	6/-	A	69-56	W
2/9	USC*	4/-	H (OT)	102-94	W
2/11	Notre Dame	4/1	A	56-52	W
2/15	Arizona State*	2/-	H	85-83	W
2/17	Arizona*	2/-	H	110-86	W
2/22	Washington*	1/-	A	68-69	L
2/24	Washington State*	1/-	A (3OT)	110-102	W
3/1	California*	3/-	H	79-68	W
3/3	Stanford*	3/-	H	99-71	W
3/11	Pepperdine ¹	2/-	H	76-71	W
3/15	San Francisco ¹	2/12	N	99-81	W
3/17	DePaul ¹	2/6	N	91-95	L

Final Polls: UPI - 2, AP - 2

* Pac-10 Conference game

1 NCAA Tournament

1979-80

Overall: 22-10 **Pac-10: 12-6 (4th)**

Coach: Larry Brown

Date	Opponent	AP Rk	Site	Score	W/L
11/30	Idaho State	8/-	H	82-40	W
12/1	Hofstra	8/-	H	90-71	W
12/8	Santa Clara	7/-	H	92-79	W
12/11	Notre Dame	7/4	A	74-77	L
12/15	DePaul	7/11	H	94-99	L
12/21	UC Santa Barbara	14/-	H	102-58	W
12/22	Colorado State	14/-	H	86-63	W
12/28	California*	16/-	H	73-59	W
12/29	Stanford*	16/-	H	92-60	W
1/3	Oregon State*	16/14	A	67-76	L
1/5	Oregon*	16/-	A	76-62	W
1/12	USC*	16/-	A	74-82	L
1/17	Arizona State*		H	76-78	L

YEAR-BY-YEAR RESULTS

1/19	Notre Dame	-/8	H	73-80	L
1/21	Arizona*		H	69-59	W
1/24	Washington*		A	76-59	W
1/26	Washington State*		A	64-80	L
1/31	Oregon State*	-/2	H	93-67	W
2/2	Oregon*		H	90-76	W
2/9	USC*		H	91-64	W
2/16	Arizona*		A	90-78	W
2/18	Arizona State*	-/18	A	80-92	L
2/21	Washington State*	-/20	H	80-66	W
2/23	Washington*		H	70-72	L
2/28	Stanford*		A	75-62	W
3/1	California*		A	83-58	W
3/7	Old Dominion ¹		N	87-74	W
3/9	DePaul ¹	-/1	N	77-71	W
3/13	Ohio State ¹	-/10	N	72-68	W
3/15	Clemson ¹		N	85-74	W
3/22	Purdue ²	-/20	N	67-62	W
3/24	Louisville ²	-/2	N	54-59	L

Final Polls: UPI – NR, AP – NR

* Pac-10 Conference game

1 NCAA Tournament

2 NCAA Tournament (Final Four)

1980-81

Overall: 20-7 Pac-10: 13-5 (3rd)

Coach: Larry Brown

Date	Opponent	AP Rk	Site	Score	W/L
11/28	VMI	6/-	H	99-61	W
11/29	Notre Dame	6/10	H	94-81	W
12/6	Saint Mary's	3/-	H	113-70	W
12/13	Pepperdine	3/-	H	81-63	W
12/15	Evansville	3/-	H	69-62	W
12/21	Temple ¹	3/-	N	73-49	W
12/27	DePaul	3/1	A	77-93	L
1/3	Washington*	7/-	H	96-74	W
1/5	Washington State*	7/-	H	87-61	W
1/10	USC*	7/-	H	66-68	L
1/16	Arizona State*	8/12	A (30T)	74-78	L
1/17	Arizona*	8/-	A	79-76	W
1/23	Stanford*	12/-	H	85-58	W
1/24	California*	12/-	H	75-61	W
1/29	Oregon State*	10/1	A	67-81	L
1/31	Oregon*	10/-	A	75-69	W
2/6	USC*	12/-	A	76-82	W
2/8	Notre Dame	12/9	A	51-50	W
2/12	Arizona*	8/-	H	90-79	W
2/14	Arizona State*	8/5	H	64-61	W
2/19	California*	6/-	A	72-66	W
2/21	Stanford*	6/-	A	72-74	L
2/27	Oregon*	13/-	H	98-75	W
3/1	Oregon State*	13/1	H	76-82	L
3/5	Washington State*	13/-	A	59-50	W
3/7	Washington*	13/-	A	91-72	W
3/14	BYU ²	10/16	N	55-78	L

Final Polls: UPI – 11, AP – 10

* Pac-10 Conference game

1 game played at Yoyogi Gymnasium (Tokyo, Japan)

2 NCAA Tournament



Kiki Vandeweghe

1981-82

Overall: 21-6 Pac-10: 14-4 (2nd)

Coach: Larry Farmer

Date	Opponent	AP Rk	Site	Score	W/L
11/27	BYU	2/-	H	75-79	L
11/28	Pepperdine	2/-	H	76-69	W
12/3	Rutgers ¹	8/-	A	54-57	L
12/5	Notre Dame	8/-	A	75-49	W
12/12	Boston University	17/-	H	77-43	W
12/19	DePaul	17/7	H	87-75	W
12/23	LSU ²	15/-	A	83-76	W
12/29	Maryland	16/-	H	90-57	W
1/2	Washington State*	16/-	A (30T)	51-57	L
1/4	Washington*	16/-	A	50-56	L
1/9	USC*	19/-	A	71-86	L
1/16	Arizona*		H	65-56	W
1/18	Arizona State*		H	75-59	W
1/22	Stanford*		A	42-34	W
1/23	California*		A	83-56	W
1/29	Oregon State*	-/8	H	74-68	W
1/30	Oregon*		H	84-61	W
2/5	USC*		H	69-66	W
2/7	Notre Dame		H	48-47	W
2/12	Arizona*		A	88-73	W
2/13	Arizona State*		A	72-60	W
2/19	California*	H (OT)	H	70-65	W
2/20	Stanford*		H	79-53	W
2/26	Oregon State*	20/4	A	58-72	L
2/27	Oregon*	20/-	A	88-66	W
3/5	Washington*	19/-	H	68-67	W
3/6	Washington State*	19/-	H	57-54	W

(Final Polls: UPI – NR, AP – 19)

* Pac-10 Conference game

1 game played at Meadowlands Arena (East Rutherford, N.J.)

2 game played at The Superdome (New Orleans, La.)

1982-83

Overall: 23-6 Pac-10: 15-3 (1st)

Championships Won: Pac-10

Coach: Larry Farmer

Date	Opponent	AP Rk	Site	Score	W/L
11/26	BYU	7/-	A	85-82	W
12/2	DePaul	6/-	A (OT)	73-70	W
12/4	Notre Dame	6/-	A	65-64	W
12/11	San Jose State	5/-	H	94-71	W
12/18	Iowa	4/7	H	75-66	W
12/20	LSU	4/-	H	82-68	W
12/23	Maryland	3/-	A (20T)	79-80	L
12/28	Louisville	5/13	H	76-72	W
1/8	Arizona*	6/-	A	92-87	W
1/10	Arizona State*	6/-	A	87-86	W
1/13	Oregon*	5/-	H	97-69	W
1/15	Oregon State*	5/-	H	99-77	W
1/20	California*	1/-	A	68-63	W
1/22	Stanford*	1/-	A	101-87	W
1/28	Alabama	1/-	H	67-70	L
1/30	Notre Dame	1/-	H	59-53	W
2/3	Washington State*	7/-	H (OT)	89-87	W
2/5	Washington*	7/18	H	84-65	W
2/10	Oregon*	5/-	A	67-56	W
2/12	Oregon State*	5/-	A	65-69	L
2/17	Stanford*	10/-	H	99-86	W
2/19	California*	10/-	H	70-60	W
2/24	USC*	8/-	H	77-60	W
2/26	USC*	8/-	A	71-64	W
3/5	Washington*	6/-	A	90-66	W
3/7	Washington State*	6/-	A	68-70	L
3/10	Arizona*	4/-	H	111-58	W
3/12	Arizona State*	4/-	H	76-78	L
3/19	Utah ¹	7/-	N	61-67	L

Final Polls: UPI – 7, AP – 7

* Pac-10 Conference game

1 NCAA Tournament

1983-84

Overall: 17-11 Pac-10: 10-8 (4th)

Coach: Larry Farmer

Date	Opponent	AP Rk	Site	Score	W/L
11/25	Idaho State	9/-	H	85-58	W
11/26	Long Beach State	9/-	H	65-59	W
12/3	Notre Dame	9/-	A	51-47	W
12/10	New Mexico	7/-	H	60-65	L
12/17	Memphis	15/-	H	65-51	W
12/19	Howard	15/-	H	63-52	W
12/22	Saint Mary's	9/-	H	63-54	W
12/28	BYU	7/-	H	82-73	W
1/5	Arizona State*	6/-	H	79-57	W
1/7	Arizona*	6/-	A	61-58	W
1/10	Stanford*	6/-	H	71-66	W
1/14	Oregon*	6/-	A	51-62	L
1/19	California*	9/-	H	76-54	W

1/22	Louisville	9/-	A	78-86	L
1/26	USC*	15/-	H (OT)	75-69	W
1/28	DePaul	15/2	H	68-84	L
2/2	Washington State*	20/-	A	73-59	W
2/4	Washington*	20/-	A (30T)	81-89	L
2/9	Oregon*		H (OT)	83-87	L
2/11	Oregon State*		H	63-72	L
2/16	California*		A (OT)	70-62	W
2/18	Stanford*		A	64-75	L
2/25	USC*		A	72-80	L
2/27	Arizona State*		A	67-76	L
3/1	Washington*	-/13	H	73-59	W
3/3	Washington State*		H	83-64	W
3/8	Arizona*		H	68-60	W
3/10	Oregon State*		A	65-70	L

Final Polls: UPI – NR, AP – NR

* Pac-10 Conference game

1984-85

Overall: 21-12 Pac-10: 12-6 (T-3rd)

Championships Won: NIT

Coach: Walt Hazzard

Date	Opponent	AP Rk	Site	Score	W/L
11/23	Idaho		H	87-58	W
11/24	Santa Clara		H	60-68	L
12/1	DePaul	-/2	A	61-80	L
12/8	Memphis		A	70-86	L
12/15	U.S. International		H	98-50	W
12/19	BYU		A	81-89	L
12/22	St. John's ¹	-/8	A	69-88	L
12/29	Oral Roberts		H	69-61	W
1/3	Oregon State*		A	49-59	L
1/5	Oregon*		H (20T)	67-59	W
1/10	Washington State*		H	75-48	W
1/17	Arizona State*		A	64-61	W
1/19	Arizona*		A	52-53	L
1/21	Washington*		H	63-51	W
1/24	California*		H	80-69	W
1/26	Stanford*		H	100-71	W
2/1	USC*		A (20T)	77-78	L
2/3	Notre Dame		H	52-53	L
2/7	Washington State*		A (OT)	58-66	L
2/9	Washington*		A	61-67	L
2/16	Arizona State*		H	69-65	W
2/18	Stanford*		A	72-66	W
2/21	California*		A	53-48	W
2/24	Louisville		H	75-65	W
2/28	USC*		H (40T)	78-80	L
3/2	Arizona*	-/19	H	58-54	W
3/7	Oregon State*		H	59-51	W
3/9	Oregon*		A	72-69	W
3/13	Montana ²		H	78-47	W
3/19	Nebraska ²		H	82-63	W
3/23	Fresno State ²		H	53-43	W
3/27	Louisville ³		N	75-66	W
3/29	Indiana ⁴		N	65-62	W

Final Polls: UPI – NR, AP – NR

* Pac-10 Conference game

1 game played at Madison Square Garden (New York, N.Y.)

2 Postseason NIT (early rounds, Pauley Pavilion)

3 Postseason NIT (semifinal, Madison Square Garden)

4 Postseason NIT (championship, Madison Square Garden)

1985-86

Overall: 15-14 Pac-10: 9-9 (4th)

Coach: Walt Hazzard

Date	Opponent	AP Rk	Site	Score	W/L
11/24	North Carolina	-/2	A	70-107	L
11/29	Saint Mary's		H	91-62	W
11/30	Temple		H	75-59	W
12/7	Long Beach State		H	84-64	W
12/14	St. John's	-/14	H	65-69	L
12/20	Loyola Marymount		H	85-79	W
12/21	Miami (Florida)		H	109-64	W
1/2	Oregon*		H	71-65	W
1/4	Oregon State*		H	49-54	L
1/9	Washington*		A	65-90	L
1/11	Washington State*		A (20T)	81-80	W
1/16	Arizona State*		H	86-75	W
1/18	Notre Dame	-/13	A	64-74	L
1/23	Stanford*		A	70-76	L
1/25	California*		A	67-75	L
1/29	USC*		H	66-56	W
2/1	Louisville	-/18	A	72-91	L
2/6	Washington*		H (OT)	94-89	W
2/9	Washington State*		H	88-81	W
2/13	Arizona*		A	60-85	L
2/15	Arizona State*		A (OT)	73-74	L
2/20	California*		H	76-63	W
2/22	USC*		A	64-79	L
2/24	Stanford*		H	95-74	W

YEAR-BY-YEAR RESULTS

3/1	DePaul	H	65-63	W
3/3	Arizona*	H	76-88	L
3/6	Oregon State*	A	74-63	W
3/8	Oregon*	A	65-80	L
3/13	UC Irvine ¹	H	74-80	L

Final Polls: UPI – NR, AP – NR

* Pac-10 Conference game

¹ Postseason NIT (early rounds, Pauley Pavilion)

1986-87

Overall: 25-7 **Pac-10: 14-4 (1st)**

Championships Won: Pac-10, Pac-10 Tournament

Coach: Walt Hazzard

Date	Opponent	AP Rk	Site	Score	W/L
11/29	Santa Clara		H	76-62	W
12/1	North Carolina	-/1	H	89-84	W
12/6	Pepperdine	11/-	H	95-63	W
12/13	St. John's	11/-	A	63-70	L
12/15	Temple	11/-	A	65-76	L
12/19	Washington State*	17/-	A	73-81	L
12/21	Washington*	17/-	A	80-90	L
12/27	Long Beach State		H	67-65	W
12/29	Cal State Fullerton		H	72-71	W
1/2	Stanford*		H	95-75	W
1/4	California*		H	86-81	W
1/8	Arizona State*		A	61-51	W
1/11	Arizona*		A	84-83	W
1/15	Oregon*		H	64-59	W
1/18	Oregon State*		H (OT)	69-67	W
1/24	Notre Dame		H	63-59	W
1/29	Washington*		H	87-95	L
2/1	Washington State*		H	61-60	W
2/5	Stanford*		A	93-62	W
2/7	California*		A	77-72	W
2/12	Arizona*		H	81-65	W
2/14	USC*		A	77-65	W
2/16	Arizona State*		H	64-67	L
2/19	Oregon State*		A	57-53	W
2/22	Oregon*		A	102-71	W
2/26	USC*		H	82-76	W
2/28	Louisville		H	99-86	W
3/6	Arizona State ¹	18/-	H	99-93	W
3/7	California ¹	18/-	H	75-68	W
3/8	Washington ¹	18/-	H	76-64	W
3/12	Central Michigan ²	15/-	N	92-73	W
3/14	Wyoming ²	15/-	N	68-78	L

Final Polls: UPI – 13, AP – 15

* Pac-10 Conference game

¹ Pac-10 Conference Tournament (Pauley Pavilion)

² NCAA Tournament

1987-88

Overall: 16-14 **Pac-10: 12-6 (T-2nd)**

Coach: Walt Hazzard

Date	Opponent	AP Rk	Site	Score	W/L
11/20	Oral Roberts ¹		H	119-79	W
11/23	New Mexico ²		A	66-77	L
12/3	Temple	-/12	H	76-81	L
12/5	BYU		H	80-87	L
12/12	St. John's		H	64-72	L
12/14	Pennsylvania		H	98-49	W
12/17	UC Irvine		H	116-100	W
12/21	California*		A	70-83	L
12/23	Stanford*		A (201)	110-116	L
12/28	Cal State Fullerton		H	74-65	W
1/2	North Carolina	-/4	H	73-80	L
1/7	Oregon State*		H	64-65	L
1/10	Oregon*		H	65-60	W
1/14	USC*		H	81-65	W
1/16	Louisville		A	79-92	L
1/21	Arizona State*		A	94-81	W
1/24	Arizona*	-/1	A	74-86	L
1/28	Washington State*		H	88-63	W
1/30	Washington*		H	78-71	W
2/4	Oregon*		A	76-71	W
2/7	Oregon State*		A	68-73	L
2/11	USC*		A	85-70	W
2/14	Notre Dame		A	66-73	L
2/18	Arizona State*		H	79-73	W
2/20	Arizona*	-/3	H (OT)	76-78	L
2/25	Washington*		A	97-87	W
2/27	Washington State*		A	62-55	W
3/3	Stanford*		H	91-69	W
3/6	California*		H	74-66	W
3/11	Washington State ³		N	71-73	L

Final Polls: UPI – NR, AP – NR

* Pac-10 Conference game

¹ Big Apple Preseason NIT (1st round, Pauley Pavilion)

² Big Apple Preseason NIT (2nd round, Albuquerque, N.M.)

³ Pac-10 Conference Tournament (Tucson, Ariz.)

1988-89

Overall: 21-10 **Pac-10: 13-5 (T-3rd)**

Coach: Jim Harrick

Date	Opponent	AP Rk	Site	Score	W/L
11/26	Texas Tech		H	84-62	W
12/1	Miami (Florida)		A	91-66	W
12/3	BYU		A	97-87	W
12/7	Boston University		H	85-74	W
12/17	North Carolina	-/8	A	78-104	L
12/21	California	20/-	H	76-59	W
12/23	Stanford	20/-	H	74-70	W
12/28	UC Irvine		A	90-91	L
12/30	North Texas		H	99-84	W
1/5	Oregon*		A	97-66	W
1/8	Oregon State*		A	69-82	L
1/12	USC*		A	67-66	W
1/14	Notre Dame		H	79-82	L
1/19	Arizona State*		H	94-84	W
1/21	Stanford*	-/20	A	75-84	L
1/26	Washington State*		A	64-63	W
1/28	Washington*		A	93-74	W
2/2	Oregon*		H	80-74	W
2/5	Oregon State*		H	92-75	W
2/8	USC*		H	68-65	W
2/12	Louisville	-/4	H	77-75	W
2/16	Arizona State*		A	86-93	L
2/18	Arizona*	-/2	A	64-102	L
2/23	Washington*		H	101-78	W
2/26	Washington State*		H	56-55	W
3/2	California*		A	81-73	W
3/4	Arizona*	-/1	H	86-89	L
3/10	Washington ¹		N	64-54	W
3/11	Stanford ¹	-/12	N	86-95	L
3/17	Iowa State ²		N	84-74	W
3/19	North Carolina ²	-/5	N	81-88	L

Final Polls: UPI – NR, AP – NR

* Pac-10 Conference game

¹ Pac-10 Conference Tournament (Great Western Forum)

² NCAA Tournament

1989-90

Overall: 22-11 **Pac-10: 11-7 (4th)**

Coach: Jim Harrick

Date	Opponent	AP Rk	Site	Score	W/L
11/25	Santa Clara	13/-	H	66-62	W
11/30	Washington*	15/-	A	58-56	W
12/2	Washington State*	15/-	A	68-64	W
12/9	San Diego	13/-	H	83-74	W
12/17	Notre Dame	13/-	A	84-86	L
12/19	American	18/-	H	89-74	W
12/23	Cal State Fullerton	18/-	H	87-75	W
12/27	Fresno State	16/-	A	74-65	W
12/29	East Tennessee State	16/-	H	115-66	W
1/3	USC*	15/-	H	89-72	W
1/7	Louisville	15/8	A	80-97	L
1/11	Arizona State*	19/-	H	62-53	W
1/13	Arizona*	19/18	H	73-67	W
1/18	Stanford*	16/-	A	79-87	L
1/21	California*	16/-	A	106-97	W
1/25	Oregon*	23/-	H	79-62	W
1/27	Oregon State*	23/-	H	94-80	W
2/1	USC*	16/-	A	75-76	L
2/3	DePaul	16/-	H	87-77	W
2/8	Arizona State*	19/-	A	80-72	W
2/10	Arizona*	19/-	A	74-83	L
2/15	California*	23/-	H	71-79	L
2/18	Stanford*	23/-	H	69-70	L
2/22	Oregon*		A	99-105	L
2/24	Oregon State*	-/17	A	74-83	L
3/1	Washington State*		H	96-89	W
3/4	Washington*		H	74-61	W
3/9	Oregon ¹		N	94-76	W
3/10	Arizona State ¹		N	79-78	W
3/11	Arizona ¹	-/15	N	78-94	L
3/16	UAB ²		N	68-56	W
3/18	Kansas ²	-/5	N	71-70	W
3/22	Duke ²	-/15	N	81-90	L

Final Polls: UPI – NR, AP – NR

* Pac-10 Conference game

¹ Pac-10 Conference Tournament (Tempe, Ariz.)

² NCAA Tournament



Pooh Richardson

1990-91

Overall: 23-9 **Pac-10: 11-7 (2nd)**

Coach: Jim Harrick

Date	Opponent	AP Rk	Site	Score	W/L
11/23	UC Irvine ¹	11/-	N	134-101	W
11/24	Alaska Anchorage ¹	11/-	A	80-67	W
11/26	Virginia ¹	11/18	N	89-74	W
12/2	Loyola Marymount	12/-	H	149-98	W
12/5	Saint Mary's	8/-	H	123-93	W
12/8	Notre Dame	8/-	H	99-91	W
12/15	DePaul	6/-	A	92-90	W
12/19	Pepperdine	5/-	H	108-85	W
12/22	Iowa	5/-	A	71-88	L
12/27	Fresno State	10/-	H	110-89	W
12/29	San Diego State	10/-	H	94-74	W
1/2	USC*	10/-	H	98-81	W
1/5	Louisville	10/-	H	88-81	W
1/10	Arizona State*	7/-	A	82-68	W
1/12	Arizona*	7/6	A	77-82	L
1/16	Stanford*	7/-	H	82-89	L
1/20	California*	7/-	H	98-81	W
1/24	Oregon State*	11/-	A (201)	96-97	L
1/26	Oregon*	11/-	A	90-83	W
1/30	USC*	12/-	A	74-76	L
2/2	Pittsburgh	12/19	H	112-95	W
2/7	Arizona State*	14/-	H	64-44	W
2/10	Arizona*	14/5	H (OT)	94-105	L
2/14	California*	15/-	A	79-82	L
2/16	Stanford*	15/-	A	89-86	W
2/21	Oregon*	17/-	H	100-83	W
2/23	Oregon State*	17/-	H	87-56	W
2/28	Washington State*	16/-	A	99-91	W
3/3	Washington*	16/-	A	68-86	L
3/7	Washington State*	17/-	H	86-64	W
3/10	Washington*	17/-	H	73-60	W
3/18	Penn State ²	16/-	N	69-74	L

Final Polls: UPI – 14, AP – 16

* Pac-10 Conference game

¹ Great Alaska Shootout (Anchorage, Alaska)

² NCAA Tournament

1991-92

Overall: 28-5 **Pac-10: 16-2 (1st)**

Championships Won: Pac-10

Coach: Jim Harrick

Date	Opponent	AP Rk	Site	Score	W/L
11/15	Indiana ¹	11/2	N	87-72	W
11/30	Long Beach State	4/-	H	68-57	W
12/7	Pepperdine	2/-	H	98-58	W
12/14	San Diego State	3/-	A	84-64	W
12/20	Loyola Marymount	3/-	H	106-80	W
12/23	Cal State Fullerton	2/-	H	86-80	W
12/28	Oral Roberts	2/-	H	113-62	W
1/4	Georgia	2/-	H	87-80	W
1/9	Arizona State*	2/-	A	83-62	W
1/11	Arizona*	2/6	A	89-87	W
1/16	Oregon*	2/-	H	99-71	W
1/18	Oregon State*	2/-	H (OT)	87-81	W
1/23	California*	2/-	A	86-66	W
1/25	Stanford*	2/24	A	83-77	W
1/29	USC*	2/25	H	82-86	L
2/2	Louisville	2/24	A	78-64	W
2/6	Washington*	4/-	H	74-61	W
2/8	Washington State*	4/-	H	82-61	W
2/13	Oregon State*	3/-	A	72-62	W
2/15	Oregon*	3/-	A	84-65	W
2/18	California*	2/-	H	82-76	W

YEAR-BY-YEAR RESULTS

2/20	Stanford*	2/-	H	96-70	W
2/22	Notre Dame	2/-	A	71-84	L
2/27	USC*	4/13	A	79-83	L
3/1	Duke	4/1	H	65-75	L
3/5	Washington State*	9/-	A	89-85	W
3/8	Washington*	9/-	A	80-79	W
3/12	Arizona*	8/2	H	89-81	W
3/14	Arizona State*	8/-	H	85-77	W
3/20	Robert Morris ²	4/-	N	73-53	W
3/22	Louisville ²	4/-	N	85-69	W
3/26	New Mexico State ²	4/-	N	85-78	W
3/28	Indiana ²	4/5	N	79-106	L

Final Polls: UPI - 3, AP - 4

* Pac-10 Conference game

1 Hall of Fame Tip-Off Classic (Springfield, Mass.)

2 NCAA Tournament

1992-93

Overall: 22-11 Pac-10: 11-7 (T-3rd)

Coach: Jim Harrick

Date	Opponent	AP Rk	Site	Score	W/L
11/18	Saint Louis ¹	24/-	H	68-54	W
11/20	UTEP ¹	24/-	H	73-72	W
11/25	Seton Hall ²	21/6	N	64-73	L
11/27	Florida State ²	21/7	N	86-83	W
12/5	Santa Clara	16/-	H	69-60	W
12/12	San Diego	13/-	H	90-63	W
12/19	Georgia ³	13/-	N	68-63	W
12/22	Cal State Northridge	12/-	H	80-73	W
12/28	Pittsburgh	11/-	A	79-91	L
12/30	Cal State Fullerton	11/-	H	90-82	W
1/2	Houston	11/-	H	87-78	W
1/7	Arizona*	15/20	H	80-82	L
1/9	Arizona State*	15/-	H	89-85	W
1/14	Oregon*	16/-	A	99-87	W
1/16	Oregon State*	16/-	A	73-79	L
1/21	Stanford*	23/-	H	84-76	W
1/24	California*	23/-	H	82-104	L
1/28	USC*	A		90-80	W
1/31	Notre Dame	H		68-65	W
2/4	Washington*	A		67-81	L
2/6	Washington State*	A		56-67	L
2/11	Oregon State*	H		76-75	W
2/14	Oregon*	H		97-90	W
2/18	Stanford*	A		72-64	W
2/20	California* ⁴	A		85-71	W
2/25	USC*	H		62-72	L
2/28	Duke	-/9	A	67-78	L
3/4	Washington State*	H		71-70	W
3/6	Washington*	H		93-64	W
3/11	Arizona State*	A		77-74	W
3/13	Arizona*	-/6	A	80-99	L
3/19	Iowa State ⁵	N		81-70	W
3/21	Michigan ⁵	-/3	N (OT)	84-86	L

Final Polls: USA Today / NABC - NR, AP - NR

* Pac-10 Conference game

1 Preseason NIT (1st and 2nd rounds, Pauley Pavilion)

2 Preseason NIT (Championship, New York, N.Y.)

3 game played at Georgia Dome (Atlanta, Ga.)

4 game played at Oakland Arena (Oakland, Calif.)

5 NCAA Tournament

1993-94

Overall: 21-7 Pac-10: 13-5 (T-2nd)

Coach: Jim Harrick

Date	Opponent	AP Rk	Site	Score	W/L
11/27	Loyola Marymount	14/-	H	115-77	W
12/4	UNLV	10/-	H	108-83	W
12/8	Tennessee State	9/-	H	80-66	W
12/11	Long Beach State	9/-	H	93-51	W
12/18	LSU	9/25	H	100-80	W
12/20	Houston	9/-	A	93-72	W
12/28	N.C. State ¹	8/-	N	81-75	W
1/6	Oregon*	6/-	H	89-73	W
1/8	Oregon State*	6/-	H	104-71	W
1/13	Washington State*	5/-	A	81-79	W
1/15	Washington*	5/-	A	82-62	W
1/20	Arizona*	2/9	H	74-66	W
1/22	Arizona State*	2/-	H	98-81	W
1/27	Stanford*	1/-	A	69-65	W
1/30	California* ²	1/-	A	70-85	L
2/3	USC*	4/-	H	101-72	W
2/5	Notre Dame	4/-	A	63-79	L
2/10	Washington*	9/-	H	79-76	W
2/12	Washington State*	9/-	H	76-66	W
2/17	Arizona State*	8/-	A	76-70	W
2/19	Arizona*	8/15	A	74-98	L
2/24	California*	15/17	H	88-92	L
2/26	Stanford*	15/-	H	103-88	W
3/3	USC*	15/-	A	79-85	L
3/6	Louisville	15/10	H	75-72	W
3/10	Oregon State*	15/-	A	78-67	W
3/12	Oregon*	15/-	A	79-80	L
3/18	Tulsa ³	17/-	N	102-112	L

Final Polls: CNN - 22, AP - 17

* Pac-10 Conference game

1 game played at Greensboro Coliseum (Greensboro, N.C.)

2 game played at Oakland Arena (Oakland, Calif.)

3 NCAA Tournament

1994-95

Overall: 32-1 Pac-10: 17-1 (1st)

Championships Won: NCAA, Pac-10

Coach: Jim Harrick

Date	Opponent	AP Rk	Site	Score	W/L
11/26	Cal State Northridge	6/-	H	83-60	W
12/3	Kentucky ¹	2/7	N	82-81	W
12/10	Cal State Fullerton	2/-	H	99-65	W
12/17	LSU	2/-	A	92-72	W
12/22	George Mason	2/-	H	137-100	W
12/28	North Carolina State	2/-	H	88-80	W
1/5	Oregon*	2/-	A	72-82	L
1/7	Oregon State*	6/-	A	87-78	W
1/12	Washington*	6/-	H	75-57	W
1/14	Washington State*	6/-	H	91-78	W
1/19	Arizona*	4/11	A	71-61	W
1/21	Arizona State*	4/13	A	85-72	W
1/26	Stanford*	4/17	H	77-74	W
1/28	California*	4/-	H	93-100	^W
2/2	USC*	7/-	A	73-69	W
2/5	Notre Dame	7/-	H	92-55	W
2/9	Washington*	6/-	A	74-66	W

2/11	Washington State*	6/-	A	98-83	W
2/16	Arizona State*	6/13	H (OT)	82-77	W
2/19	Arizona*	6/12	H	72-70	W
2/21	Stanford*	2/19	A	88-77	W
2/23	California*	2/-	A	104-88	W
2/26	Duke	2/-	H	100-77	W
3/1	USC*	1/-	H	85-66	W
3/5	Louisville	1/-	A	91-73	W
3/9	Oregon State*	1/-	H	86-67	W
3/11	Oregon*	1/25	H	94-78	W
3/17	Florida International ²	1/-	N	92-56	W
3/19	Missouri ²	1/23	N	75-74	W
3/23	Mississippi State ²	1/18	N	86-67	W
3/25	Connecticut ²	1/8	N	102-96	W
4/1	Oklahoma State ³	1/14	N	74-61	W
4/3	Arkansas ³	1/6	N	89-78	W

Final Polls: AP - 1 NABC - 1

* Pac-10 Conference game

^ game forfeited by California

1 John R. Wooden Classic (Anaheim, Calif.)

2 NCAA Tournament

3 NCAA Tournament Final Four (Kingdome - Seattle, Wash.)

1995-96

Overall: 23-8 Pac-10: 16-2 (1st)

Championships Won: Pac-10

Coach: Jim Harrick

Date	Opponent	AP Rk	Site	Score	W/L
11/20	Santa Clara ¹	4/-	N	69-78	L
11/21	Wisconsin ¹	4/-	N	68-57	W
11/22	Vanderbilt ¹	4/-	N	71-75	L
11/28	Cal State Fullerton	23/-	H	79-63	W
12/2	Kansas	23/2	A	70-85	L
12/9	Maryland ²	-/20	N	73-63	W
12/18	Stephen F. Austin	H		109-88	W
12/20	Notre Dame	A		83-58	W
12/23	UNLV	A		89-82	W
12/30	San Francisco	23/-	H	92-58	W
1/4	Washington State* ³	20/-	A (OT)	78-73	W
1/6	Washington*	20/-	A	78-70	W
1/11	Stanford*	17/24	H	64-56	W
1/13	California*	17/-	H	93-73	W
1/18	Arizona State*	13/-	A	87-73	W
1/20	Arizona*	13/18	A	79-88	L
1/24	USC*	15/-	H	99-72	W
1/27	Louisville	15/-	H	76-78	L
2/1	Oregon*	19/-	H	85-78	W
2/3	Oregon State*	19/-	H	69-60	W
2/8	California* ⁴	17/-	A	73-65	W
2/10	Stanford*	17/24	A	66-67	L
2/15	Arizona*	18/13	H	76-75	W
2/17	Arizona State*	18/-	H	87-70	W
2/22	USC*	16/-	A	61-59	W
2/25	Duke	16/-	A	66-85	L
2/29	Oregon State*	17/-	A	68-66	W
3/2	Oregon*	17/-	A	77-71	W
3/7	Washington*	17/-	H (OT)	91-88	W
3/9	Washington State*	17/-	H	82-71	W
3/14	Princeton ⁵	14/-	N	41-43	L

Final Polls: AP - 14, NABC - 19

* Pac-10 Conference game

1 Maui Classic (Maui, Hawaii)

2 John R. Wooden Classic (Anaheim, Calif.)

3 game played at Spokane Arena (Spokane, Wash.)

4 game played at Oakland Arena (Oakland, Calif.)

5 NCAA Tournament

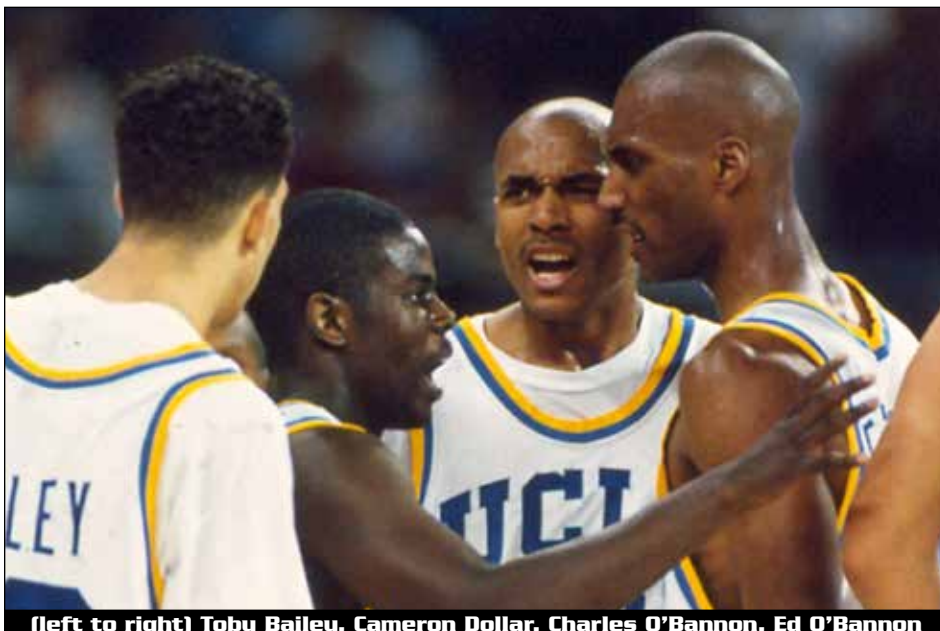
1996-97

Overall: 24-8 Pac-10: 15-3 (1st)

Championships Won: Pac-10

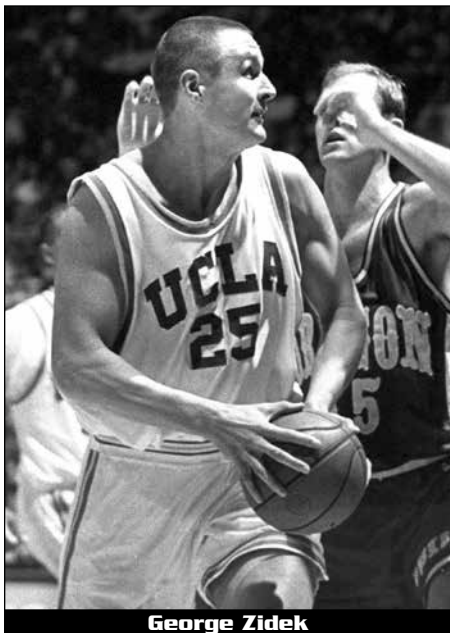
Coach: Steve Lavin

Date	Opponent	AP Rk	Site	Score	W/L
11/20	Tulsa	5/-	H (OT)	76-77	L
12/3	Cal State Northridge	17/-	H	95-73	W
12/7	Kansas	17/1	H	83-96	L
12/14	Ohio	23/-	H	72-61	W
12/17	Jackson State	24/-	H	93-67	W
12/21	Illinois ¹	24/-	A	63-79	L
12/23	Saint Louis	24/-	A	64-57	W
12/28	Morgan State	H		87-72	W
1/2	Washington State*	H		84-56	W
1/4	Washington*	H		79-70	W
1/9	Stanford*	-/21	A	61-109	L
1/11	California* ²	A		64-56	W
1/16	Arizona State*	H		79-62	W
1/18	Arizona*	-/6	H (OT)	84-78	W
1/23	USC*	A		96-87	W
1/25	Louisville	-/6	A	71-74	L
1/30	Oregon*	A (OT)		85-87	L
2/1	Oregon State*	A		74-68	W
2/6	California*	H		68-71	L
2/8	Stanford*	-/18	H	87-68	W



(left to right) Toby Bailey, Cameron Dollar, Charles O'Bannon, Ed O'Bannon

YEAR-BY-YEAR RESULTS



George Zidek

2/13	Arizona*	24/11	A	66-64	W
2/15	Arizona State*	24/-	A	92-81	W
2/19	USC*	17/-	H	82-60	W
2/23	Duke	17/6	H	73-69	W
2/27	Oregon State*	10/-	H	81-69	W
3/1	Oregon*	10/-	H	74-67	W
3/6	Washington*	9/-	A	87-85	W
3/8	Washington State*	9/-	A	87-86	W
3/13	Charleston Southern ³	7/-	N	109-75	W
3/15	Xavier ³	7/13	N	96-83	W
3/20	Iowa State ³	7/18	N (OT)	74-73	W
3/22	Minnesota ³	7/3	N	72-80	L

Final Polls: AP - 7 NABC - 7

* Pac-10 Conference game

1 game played at United Center (Chicago, Ill.)

2 game played at Cow Palace (San Jose, Calif.)

3 NCAA Tournament

1997-98

Overall: 24-9 Pac-10: 12-6 (3rd)

Coach: Steve Lavin

Date	Opponent	AP Rk	Site	Score	W/L
11/27	North Carolina ¹	7/4	N	68-109	L
11/28	Alaska Anchorage ¹	7/-	A	92-68	W
11/29	UAB ¹	7/-	N	86-72	W
12/6	New Mexico ²	15/8	N	69-58	W
12/13	Cal State Fullerton	12/-	H	120-91	W
12/18	Northern Arizona	11/-	H	90-68	W
12/20	Saint Louis	11/-	H	73-67	W
12/22	Boise State	11/-	H	81-75	W
12/27	UNLV	9/-	A	65-57	W
12/30	Illinois	9/-	H	74-69	W
1/3	Arizona*	9/8	A	75-87	L
1/5	Arizona State*	9/-	A	78-73	W
1/8	Oregon State*	10/-	H	90-72	W
1/10	Oregon*	10/-	H	68-66	W
1/15	California ³	8/-	A	74-73	W
1/17	Stanford*	8/7	A	80-93	L
1/21	USC*	9/-	H	101-84	W
1/25	Louisville	9/-	H	88-82	W
1/29	Washington State*	8/-	H	88-68	W
1/31	Washington*	8/-	H	105-94	W
2/5	Oregon*	6/-	A	81-97	L
2/7	Oregon State*	6/-	A	84-75	W
2/12	Stanford*	9/14	H	81-84	L
2/14	California*	9/-	H	87-84	W
2/18	USC*	12/-	A (OT)	82-75	W
2/22	Duke	12/2	A	84-120	L
2/26	Washington State*	18/-	A	78-75	W
3/1	Washington*	18/-	A	94-95	L
3/5	Arizona State*	19/-	H	102-94	W
3/7	Arizona*	19/2	H	87-91	L
3/13	Miami (Florida) ⁴	19/-	N	65-62	W
3/15	Michigan ⁴	19/12	N	85-82	W
3/20	Kentucky ⁴	19/5	N	68-94	L

Final Polls: AP - 19, NABC - 12

* Pac-10 Conference game

1 Great Alaska Shootout (Anchorage, Alaska)

2 John R. Wooden Classic (Anaheim, Calif.)

3 game played at Oakland Arena (Oakland, Calif.)

4 NCAA Tournament

1998-99

Overall: 22-9 Pac-10: 12-6 (3rd)

Coach: Steve Lavin

Date	Opponent	AP Rk	Site	Score	W/L
11/19	Santa Clara	11/-	H	89-76	W
11/26	San Francisco ¹	10/-	N	69-82	W
11/27	Maryland ¹	10/5	N	54-70	L
11/28	Kentucky ¹	10/4	N	62-66	L
12/2	Delaware State	18/-	H	109-67	W
12/5	Oklahoma State ²	18/11	N	69-66	W
12/12	UNLV	15/-	H	72-67	W
12/19	Cal State Northridge	12/-	H	114-97	W
12/23	American	12/-	H	66-56	W
12/29	Loyola Marymount	10/-	H	92-67	W
1/2	Arizona*	10/6	H	82-75	W
1/4	Arizona State*	10/-	H (OT)	88-85	W
1/7	Oregon State*	8/-	A	63-65	L
1/9	Oregon*	8/-	A	65-63	W
1/14	California*	10/-	H	72-61	W
1/16	Stanford*	10/4	H	59-72	L
1/20	USC*	13/-	A	98-80	W
1/23	Louisville	13/24	A	82-70	W
1/28	Washington State*	11/-	A	69-66	W
1/31	Washington*	11/-	A	83-93	L
2/4	Oregon*	13/-	H	79-77	W
2/7	Oregon State*	13/-	H	85-67	W
2/11	Stanford*	9/6	A	73-77	L
2/13	California ³	9/-	A	67-85	L
2/17	USC*	16/-	H	68-63	W
2/21	Syracuse	16/21	H	93-69	W
2/25	Washington State*	15/-	H	100-61	W
2/27	Washington*	15/-	H	79-92	W
3/4	Arizona State*	12/-	A	68-65	W
3/6	Arizona*	12/13	A	70-87	L
3/11	Detroit ⁴	15/-	N	53-56	L

Final Polls: AP - 15, USA Today/NABC - 21

* Pac-10 Conference game

1 Puerto Rico Shootout (San Juan, Puerto Rico)

2 John R. Wooden Classic (Anaheim, Calif.)

3 game played at Oakland Arena (Oakland, Calif.)

4 NCAA Tournament

1999-2000

Overall: 21-12 Pac-10: 10-8 (T-4th)

Coach: Steve Lavin

Date	Opponent	AP Rk	Site	Score	W/L
11/23	Fairfield	13/-	H	76-57	W
11/27	Iona	13/-	H	105-73	W
12/1	Morgan State	12/-	H	100-39	W
12/11	Gonzaga	11/24	H	43-59	L
12/18	DePaul	18/19	H	76-58	W
12/21	Maine ¹	18/-	N	83-62	W
12/22	Colorado State ¹	18/-	N	54-55	L
12/23	South Florida ¹	18/-	N (OT)	103-98	W
12/28	Pepperdine	23/-	H	68-66	W
12/30	Purdue	23/-	H	55-53	W
1/6	Washington ²	24/-	A	62-63	L
1/8	Washington State*	24/-	A	86-64	W
1/12	USC*		A	79-91	L
1/15	North Carolina		A	71-68	W
1/20	Arizona*	25/2	H	61-76	L
1/22	Arizona State*	25/-	H	83-77	W
1/27	Oregon State*		A	85-74	W
1/29	Oregon*		A	58-73	L
2/3	Stanford*	-/2	H	63-78	L
2/5	California*		H	70-73	L
2/9	USC*		H	83-78	W
2/13	Syracuse	-/4	A	67-71	L
2/17	Arizona State*		A	75-104	L
2/19	Arizona*	-/4	A	84-99	L
2/24	Oregon*		H	75-69	W
2/26	Oregon State*		H	69-59	W
3/2	California*		A	83-62	W
3/4	Stanford*	-/1	A (OT)	94-93	W
3/9	Washington State*		H	65-58	W
3/11	Washington*		H	90-64	W
3/16	Ball State ³		N	65-57	W
3/18	Maryland ³	-/17	N	105-70	W
3/23	Iowa State ³	-/6	N	56-80	L

Final Polls: AP - NR, USA Today/NABC - 23

* Pac-10 Conference game

1 Pearl Harbor Invitational (Laie, Hawaii)

2 game played at Key Arena (Seattle, Wash.)

3 NCAA Tournament

2000-01

Overall: 23-9 Pac-10: 14-4 (3rd)

Coach: Steve Lavin

Date	Opponent	AP Rk	Site	Score	W/L
11/9	Kansas ¹	17/7	N	98-99	L
11/10	Kentucky ¹	17/12	N (OT)	97-92	W
11/21	Cal State Northridge	15/-	H	74-78	L
11/29	UC Santa Barbara		H	83-77	W
12/2	Georgia Tech ²		N	67-72	L
12/9	Hawaii ¹		H	84-64	W
12/16	UC Irvine		H	65-60	W
12/23	North Carolina	-/15	H	70-80	L
12/30	Purdue		A	87-82	W
1/4	Washington*		H	86-64	W
1/6	Washington State*		H	75-57	W
1/11	USC*	-/19	H	80-75	W
1/13	Villanova		H	93-65	W
1/18	Arizona State*		A	91-83	W
1/20	Arizona*	-/17	A	63-88	L
1/25	Oregon State*		H	67-40	W
1/27	Oregon*		H	98-88	W
2/1	California*		A	63-92	L
2/3	Stanford*	-/1	A	79-73	W
2/8	USC*	-/22	A	85-76	W
2/10	DePaul		A	94-88	W
2/15	Arizona*	24/8	H (OT)	79-77	W
2/17	Arizona State*	24/-	H	73-68	W
2/22	Oregon*	15/-	A	88-73	W
2/24	Oregon State*	15/-	A (OT)	68-65	W
3/1	California*	12/-	H	79-75	W
3/3	Stanford*	12/1	H	79-85	L
3/8	Washington State*	13/-	A	86-76	W
3/10	Washington*	13/-	A	94-96	L
3/15	Hofstra ³	15/-	N	61-48	W
3/17	Utah State ³	15/-	N	75-50	W
3/22	Duke ³	15/1	N	63-76	L

Final Polls: AP - 15, USA Today/NABC - 12

* Pac-10 Conference game

1 Coaches vs. Cancer Tournament (New York, N.Y.)

2 John R. Wooden Classic (Anaheim, Calif.)

3 NCAA Tournament

2001-02

Overall: 21-12 Pac-10: 11-7 (6th)

Coach: Steve Lavin

Date	Opponent	AP Rk	Site	Score	W/L
11/19	Houston ¹	3/-	N	71-60	W
11/20	Ball State ¹	3/-	N	73-91	L
11/21	South Carolina ¹	3/-	N	89-77	W
11/28	Pepperdine	10/-	H	78-85	L
12/5	UC Riverside	20/-	H	65-50	W
12/8	Alabama ²	20/16	N	79-57	W
12/15	UC Irvine	17/-	H	75-74	W
12/20	Washington*	19/-	A	85-79	W
12/22	Washington State*	19/-	A	79-74	W
12/27	Columbia	15/-	H	64-55	W
12/29	Georgetown	15/20	H	98-91	W
1/4	Washington*	14/-	H	74-62	W
1/6	Washington State*	14/-	H	81-69	W
1/10	USC ³	11/-	A	77-81	L
1/12	Kansas	11/1	H	87-77	W
1/17	Arizona State*	9/-	A	82-79	W
1/19	Arizona*	9/15	A	86-96	L
1/24	Stanford*	13/17	H	76-86	L
1/26	California*	13/-	H	64-57	W
1/31	Oregon*	13/-	A	62-91	L
2/2	Oregon State*	13/-	A	70-48	W
2/6	USC*	15/25	H	67-65	W
2/9	Villanova	15/-	A	57-58	L
2/14	Arizona*	20/9	H	77-76	W
2/16	Arizona State*	20/-	H	68-69	L
2/21	California*	25/-	A	51-69	L
2/23	Stanford*	25/10	A	95-92	W
2/28	Oregon State*		H	65-57	W
3/2	Oregon*	-/13	H	62-65	L
3/7	California ⁴	-/25	N	61-67	L
3/15	Mississippi ⁵		N	80-58	W
3/17	Cincinnati ⁵	-/5	N (2OT)	105-101	W
3/21	Missouri ⁵		N	73-82	L

Final Polls: AP - NR, USA Today/NABC - 20

* Pac-10 Conference game

1 Maui Invitational (Maui, Hawaii)

2 John R. Wooden Classic (Anaheim, Calif.)

3 game played at Great Western Forum (Los Angeles, Calif.)

4 Pac-10 Conference Tournament (Staples Center)

5 NCAA Tournament

YEAR-BY-YEAR RESULTS

2002-03

Overall: 10-19 Pac-10: 6-12 (T-6th)

Coach: Steve Lavin

Date	Opponent	AP Rk	Site	Score	W/L
11/26	San Diego	14/-	H (OT)	81-86	L
11/30	Duke ¹	14/4	N	73-84	L
12/8	Long Beach State		H	81-58	W
12/14	Portland		H	105-67	W
12/17	Northern Arizona		H	63-67	L
12/21	Kansas	-/19	A	70-87	L
12/28	Michigan		H	76-81	L
1/2	Washington*		A	77-67	W
1/4	Washington State*		A	98-83	W
1/8	USC*		H	75-80	L
1/11	St. John's		H	65-80	L
1/16	Arizona State*		H	64-75	L
1/18	Arizona*	-/2	H	52-87	L
1/23	Stanford*		A	51-52	L
1/25	California*	-/25	A	69-80	L
1/30	Oregon*	-/22	H (OT)	91-96	L
2/1	Oregon State*		H	79-83	L
2/5	USC*		A	85-86	L
2/8	Georgetown		A	71-70	W
2/13	Arizona*	-/1	A	70-106	L
2/15	Arizona State*		A	69-85	L
2/20	California*	-/18	H (OT)	76-75	W
2/22	Stanford*	-/21	H	84-93	L
2/27	Oregon State*		A	69-66	W
3/1	Oregon*		A	48-79	L
3/6	Washington State*		H	86-71	W
3/8	Washington*		H	83-72	W
3/13	Arizona ²	-/1	N (OT)	96-89	W
3/14	Oregon ²		N	74-75	L

Final Polls: AP – NR, USA Today/NABC – NR

- * Pac-10 Conference game
- 1 Wooden Tradition (Indianapolis, Ind.)
- 2 John R. Wooden Classic (Anaheim, Calif.)
- 3 game played at Great Western Forum (Los Angeles, Calif.)
- 4 Pac-10 Conference Tournament (Staples Center)

2003-04

Overall: 11-17 Pac-10: 7-11 (T-7th)

Coach: Ben Howland

Date	Opponent	AP Rk	Site	Score	W/L
11/29	Vermont		H	68-67	W
12/3	UC Riverside		H	84-70	W
12/6	Kentucky ¹	-/9	N	50-52	L
12/13	Loyola Marymount		H (OT)	69-66	W
12/17	UC Santa Barbara		H	60-61	L
12/20	Michigan State		H	64-58	W
12/27	Michigan		A	66-70	L
1/2	Oregon State*		H	77-66	W
1/4	Oregon*		H	81-74	W
1/8	Washington State* ²		A	48-45	W
1/10	Washington*		A (OT)	86-84	W
1/15	Arizona State*		H	66-58	W
1/17	Arizona*	-/7	H	72-97	L
1/22	Stanford*	-/2	A	52-67	L
1/24	California*		A	62-76	L
1/28	USC*		H	69-76	L
1/31	St. John's		A	55-71	L
2/5	Washington State*		H	48-55	L
2/7	Washington*		H	80-75	W
2/12	Arizona State*		A (OT)	62-74	L
2/14	Arizona*	-/16	A	83-107	L
2/19	California*		H	66-49	W
2/21	Stanford*	-/1	H	60-73	L
2/25	USC*		A (OT)	77-78	L
2/28	Notre Dame		H	60-75	L
3/4	Oregon State*		A	56-65	L
3/6	Oregon*		A	59-60	L
3/11	Washington ³		N	83-91	L

Final Polls: AP – NR, USA Today/NABC – NR

- * Pac-10 Conference game
- 1 John R. Wooden Classic (Anaheim, Calif.)
- 2 game played at Spokane Arena (Spokane, Wash.)
- 3 Pac-10 Conference Tournament (Staples Center)

2004-05

Overall: 18-11 Pac-10: 11-7 (T-3rd)

Coach: Ben Howland

Date	Opponent	AP Rk	Site	Score	W/L
11/20	Chicago State		H	64-53	W
11/23	Western Illinois		H	75-60	W
11/27	UC Irvine		H	76-65	W
11/30	Long Beach State		H	75-62	W
12/5	Boston College ¹		N	64-74	L
12/11	Pepperdine		H	85-83	W
12/18	Michigan		H	81-79	W
12/21	Michigan State	-/23	A	64-76	L
12/31	Oregon State*		A	80-85	L
1/2	Oregon*		A	70-62	W
1/6	Washington State*		H (OT)	80-77	W
1/8	Washington*	-/12	H	95-86	W
1/13	Arizona State*		A	86-82	W
1/15	Arizona*	-/17	A	73-76	L
1/20	Stanford*		H	64-75	L
1/22	California*		H	51-64	L
1/29	USC*		A	72-69	W
2/3	Washington State*		A (OT)	58-56	W
2/5	Washington*	-/13	A	70-82	L
2/10	Arizona State*		H	95-76	W
2/12	Arizona*	-/12	H	73-83	L
2/17	California*		A	77-62	W
2/20	Stanford*		A	65-78	L
2/24	USC*		H	90-69	W
2/27	Notre Dame		A	75-65	W
3/3	Oregon State*		H	69-61	W
3/5	Oregon*		H	73-61	W
3/10	Oregon State ²		N	72-79	L
3/17	Texas Tech ³	-/24	N	66-78	L

Final Polls: AP – NR, USA Today/NABC – NR

- * Pac-10 Conference game
- 1 John R. Wooden Classic (Anaheim, Calif.)
- 2 Pac-10 Conference Tournament (Staples Center)
- 3 NCAA Tournament

2005-06

Overall: 32-7 Pac-10: 14-4 (1st)

Championships Won: Pac-10, Pac-10 Tournament

Coach: Ben Howland

Date	Opponent	AP Rk	Site	Score	W/L
11/15	New Mexico State ¹	18/-	H	83-70	W
11/17	Temple ¹	18/-	H	54-47	W
11/19	Delaware State	18/-	H	56-37	W
11/23	Memphis ²	16/11	N	80-88	L
11/25	Drexel ²	16/-	N	57-56	W
11/29	Albany	16/-	H	73-65	W
12/4	Coppin State	16/-	H	69-57	W
12/10	Nevada ³	16/17	N	67-56	W
12/17	Michigan	14/-	A	68-61	W
12/21	Wagner	12/-	H	74-72	W
12/23	Sacramento State	12/-	H	86-56	W
12/29	Stanford*	11/-	H	71-54	W
12/31	California*	11/-	H	61-68	L
1/5	Arizona*	17/21	A	85-79	W
1/7	Arizona State*	17/-	A	61-60	W
1/12	Washington State*	11/-	H	63-61	W
1/14	Washington*	11/13	H	65-69	L
1/18	USC*	18/-	H	66-45	W
1/21	West Virginia	18/12	H	56-60	L
1/26	Oregon*	17/-	A	56-49	W
1/28	Oregon State*	17/-	A	63-54	W
2/2	Arizona State*	14/-	H	69-60	W
2/4	Arizona*	14/-	H	84-73	W
2/9	Washington State*	13/-	A	50-30	W
2/11	Washington*	13/21	A	67-70	L

2/19	USC*	15/-	A	68-71	L
2/23	Oregon State*	19/-	H	78-60	W
2/26	Oregon*	19/-	H	70-53	W
3/2	California*	15/-	A (OT)	67-58	W
3/4	Stanford*	15/-	A	75-54	W
3/9	Oregon State ⁴	13/-	N	79-47	W
3/10	Arizona*	13/-	N	71-59	W
3/11	California ⁴	13/-	N	71-52	W
3/16	Belmont ⁵	7/-	N	78-44	W
3/18	Alabama ⁵	7/-	N	62-59	W
3/23	Gonzaga ⁵	7/5	N	73-71	W
3/25	Memphis ⁵	7/4	N	50-45	W
4/1	LSU ⁶	7/19	N	59-45	W
4/3	Florida ⁶	7/10	N	57-73	L

Final Polls: AP – 7, USA Today/Coaches – 2

- * Pac-10 Conference game
- 1 NIT Season Tip-Off, 1st and 2nd rounds (Pauley Pavilion)
- 2 NIT Season Tip-Off, championship round (New York, N.Y.)
- 3 John R. Wooden Classic (Anaheim, Calif.)
- 4 Pac-10 Conference Tournament (Staples Center)
- 5 NCAA Tournament
- 6 NCAA Tournament Final Four (RCA Dome – Indianapolis, Ind.)

2006-07

Overall: 30-6 Pac-10: 15-3 (1st)

Championships Won: Pac-10, Maui Invitational

Coach: Ben Howland

Date	Opponent	AP Rk	Site	Score	W/L
11/15	BYU	6/-	H	82-69	W
11/20	Chaminade ¹	5/-	N	88-63	W
11/21	Kentucky ¹	5/20	N	73-68	W
11/22	Georgia Tech ¹	5/19	N	88-73	W
11/28	Long Beach State	1/-	H	88-58	W
12/3	UC Riverside	1/-	H	61-38	W
12/5	Cal State Fullerton	1/-	H	78-54	W
12/9	Texas A&M ²	1/6	N	65-62	W
12/16	Oakland	1/-	H	74-53	W
12/19	Sam Houston State	1/-	H	75-61	W
12/23	Michigan	1/-	H	92-55	W
12/28	Washington State*	1/-	H	55-52	W
12/31	Washington*	1/13	H	96-74	W
1/4	Oregon State*	1/-	A	71-56	W
1/6	Oregon*	1/16	A	66-68	L
1/13	USC*	4/-	A	65-64	W
1/18	Arizona State*	3/-	H	60-50	W
1/20	Arizona*	3/11	H	73-69	W
1/25	California*	3/-	A	62-46	W
1/28	Stanford*	3/-	A	68-75	L
2/1	Oregon*	5/9	H	69-57	W
2/3	Oregon State*	5/-	H	82-35	W
2/7	USC*	2/19	H	70-65	W
2/10	West Virginia	2/-	A	65-70	L
2/15	Arizona State*	5/-	A	67-61	W
2/17	Arizona*	5/19	A	81-66	W
2/22	California*	4/-	H	85-75	W
2/24	Stanford*	4/-	H	75-61	W
3/1	Washington State*	2/13	A	53-45	W
3/3	Washington*	2/-	A	51-61	L
3/8	California ³	4/-	N (OT)	69-76	L
3/15	Weber State ⁴	7/-	N	70-42	W
3/17	Indiana ⁴	7/-	N	54-49	W
3/22	Pittsburgh ⁴	7/10	N	64-55	W
3/24	Kansas ⁴	7/2	N	68-55	W
3/31	Florida ⁵	7/3	N	66-76	L

Final Polls: AP – 7, USA Today/Coaches – 3

- * Pac-10 Conference game
- 1 Maui Invitational (Maui, Hawaii)
- 2 John R. Wooden Classic (Anaheim, Calif.)
- 3 Pac-10 Conference Tournament (Staples Center)
- 4 NCAA Tournament
- 5 NCAA Tournament Final Four (Georgia Dome – Atlanta, Ga.)



Cedric Bozeman

YEAR-BY-YEAR RESULTS

2007-08

Overall: 35-4

Pac-10: 16-2 (1st)

Championships Won: Pac-10, Pac-10 Tourn., CBE Classic

Coach: Ben Howland

Date	Opponent	AP Rk	Site	Score	W/L
11/9	Portland State	2/-	H	69-48	W
11/12	Youngstown State ¹	2/-	H	83-52	W
11/13	CS San Bernardino ¹	2/-	H	76-41	W
11/19	Maryland ²	2/-	N	71-59	W
11/20	Michigan State ²	2/10	N	68-63	W
11/23	Yale	2/-	H	81-47	W
11/28	George Washington	2/-	H	83-60	W
12/2	Texas ³	2/8	H	61-63	L
12/8	Davidson ⁴	7/-	N	75-63	W
12/15	Idaho State	8/-	H	89-49	W
12/18	Western Illinois	8/-	H	77-52	W
12/22	Michigan	8/-	A	69-54	W
12/29	UC Davis	5/-	H	76-48	W
1/3	Stanford*	5/20	A	76-67	W
1/5	California*	5/-	A	70-58	W
1/10	Washington*	5/-	H	69-55	W
1/12	Washington State*	5/4	H	81-74	W
1/19	USC*	4/-	H	63-72	L
1/24	Oregon*	8/-	A	80-75	W
1/26	Oregon State*	8/-	A	85-62	W
1/31	Arizona State*	5/-	H	84-51	W
2/2	Arizona*	5/-	H	82-60	W
2/7	Washington State*	5/17	A	67-59	W
2/10	Washington*	5/-	A	61-71	L
2/17	USC*	6/-	A	56-46	W
2/21	Oregon State*	6/-	H	84-49	W
2/23	Oregon*	6/-	H	75-65	W
2/28	Arizona State*	4/-	A	70-49	W
3/2	Arizona*	4/-	A	68-66	W
3/6	Stanford*	3/7	H (OT)	77-67	W
3/8	California*	3/-	H	81-80	W
3/13	California ⁵	3/-	N	88-66	W
3/14	USC ⁵	3/-	N	57-54	W
3/15	Stanford ⁵	3/11	N	67-64	W
3/20	Mississippi Valley State ⁶	3/-	N	70-29	W
3/22	Texas A&M ⁶	3/-	N	51-49	W
3/27	Western Kentucky ⁶	3/-	N	88-78	W
3/29	Xavier ⁶	3/12	N	76-57	W
4/5	Memphis ⁷	3/2	N	63-78	L

Final Polls: AP - 3, USA Today/Coaches - 4

* Pac-10 Conference game

1 CBE Classic, first and second rounds (Pauley Pavilion)

2 CBE Classic, semifinals and final (Kansas City, Mo.)

3 Pac-10/Big 12 Hardwood Series (Pauley Pavilion)

4 John R. Wooden Classic (Anaheim, Calif.)

5 Pac-10 Conference Tournament (Staples Center)

6 NCAA Tournament

7 NCAA Tournament Final Four (Alamodome - San Antonio, Texas)

2008-09

Overall: 26-9

Pac-10: 13-5 (2nd)

Coach: Ben Howland

Date	Opponent	AP Rk	Site	Score	W/L
11/12	Prairie View A&M ¹	4/-	H	82-58	W
11/13	Miami Univ. (OH) ¹	4/-	H	64-59	W
11/20	Michigan ²	4/-	N	52-55	L
11/21	Southern Illinois ²	4/-	N	77-60	W
11/29	FIU	13/-	H	89-54	W
12/4	Texas ³	12/8	A	64-68	L
12/7	Cal State Northridge	12/-	H	85-67	W
12/13	DePaul ⁴	16/-	N	72-54	W
12/17	Loyola Marymount	14/-	H	75-44	W
12/20	Mercer	14/-	H	76-59	W
12/23	Wyoming	13/-	H	113-62	W
12/28	Louisiana Tech	13/-	H	78-55	W
1/2	Oregon State*	12/-	A	69-46	W
1/4	Oregon*	12/-	A	83-74	W
1/11	USC*	10/-	A	64-60	W
1/15	Arizona*	9/-	H	83-60	W
1/17	Arizona State*	9/16	H (OT)	58-61	L
1/22	Washington State*	13/-	A	61-59	W
1/24	Washington*	13/-	A	75-86	L
1/29	California*	17/-	H	81-66	W
1/31	Stanford*	17/-	H	97-63	W
2/4	USC*	15/-	H	76-60	W
2/7	Notre Dame	15/-	H	89-63	W
2/12	Arizona State*	11/18	A	67-74	L
2/14	Arizona*	11/-	A	72-84	L
2/19	Washington*	20/22	H	85-76	W
2/21	Washington State*	20/-	H	81-82	L
2/26	Stanford*	22/-	A	76-71	W
2/28	California*	22/-	A	72-68	W
3/5	Oregon State*	20/-	H	79-54	W
3/7	Oregon*	20/-	H	94-68	W
3/12	Washington State ⁵	15/-	N	64-53	W
3/13	USC ⁵	15/-	N	55-65	L
3/19	VCU ⁶	18/-	N	65-64	W



Travis Wear

3/21 Villanova⁶ 18/11 N 69-89 L

Final Polls: AP - 18, USA Today/Coaches - 18

* Pac-10 Conference game

1 2K Sports Classic, 1st and 2nd rounds (Pauley Pavilion)

2 2K Sports Classic, semifinal and consolation game (MSG - New York, N.Y.)

3 Pac-10/Big 12 Hardwood Series (Austin, Texas)

4 John R. Wooden Classic (Anaheim, Calif.)

5 Pac-10 Conference Tournament (Staples Center)

6 NCAA Tournament

2009-10

Overall: 14-18

Pac-10: 8-10 (T-5th)

Coach: Ben Howland

Date	Opponent	AP Rk	Site	Score	W/L
11/16	Cal State Fullerton		H (20T)	65-68	L
11/20	Cal State Bakersfield		H	75-64	W
11/23	Pepperdine		H	71-52	W
11/26	Portland ¹		N	47-74	L
11/27	Butler ¹	-/12	N	67-69	L
11/29	Long Beach State ¹		N	68-79	L
12/6	Kansas ²	-/1	H	61-73	L
12/12	Mississippi State ³		N	54-72	L
12/15	New Mexico State		H	100-68	W
12/19	Notre Dame		A	73-84	L
12/22	Colorado State		H	75-63	W
12/27	Delaware State		H	66-49	W
12/31	Arizona State*		H	72-70	W
1/2	Arizona*		H	63-77	L
1/6	California*		A (OT)	76-75	W
1/9	Stanford*		A	59-70	L
1/16	USC*		H	46-67	L
1/21	Washington*		H	62-61	W
1/23	Washington State*		H	74-62	W
1/28	Oregon*		A (OT)	66-71	L
1/30	Oregon State*		A	62-52	W
2/4	Stanford*		H	77-73	W
2/6	California*		H	58-72	L
2/14	USC*		A	64-68	L
2/18	Washington State*		A	71-51	W
2/20	Washington*		A	68-97	L
2/25	Oregon State*		H	65-56	W
2/27	Oregon*		H	68-70	L
3/4	Arizona*		A	73-78	L
3/6	Arizona State*		A	46-56	L
3/11	Arizona*		N	75-69	W
3/12	California ⁴		N	72-85	L

Final Polls: AP - NR, USA Today/Coaches - NR

* Pac-10 Conference game

1 76 Classic (Anaheim Convention Center - Anaheim, Calif.)

2 Pac-10/Big 12 Hardwood Series (Pauley Pavilion)

3 John R. Wooden Classic (Anaheim, Calif.)

4 Pac-10 Conference Tournament (Staples Center)

2010-11

Overall: 23-11

Pac-10: 13-5 (2nd)

Coach: Ben Howland

Date	Opponent	AP Rk	Site	Score	W/L
11/12	Cal State Northridge		H	83-50	W
11/15	Pepperdine ¹		H	79-69	W
11/16	Pacific ¹		H	57-44	W
11/24	Villanova ²	-/7	N	70-82	L
11/26	VCU ²		N	85-89	L
12/2	Kansas ³	-/4	A	76-77	L
12/5	Montana		H	57-66	L
12/11	Cal Poly		H	72-61	W
12/13	UC Davis		H	74-67	W
12/18	BYU ⁴	-/16	N	86-79	W
12/21	Montana State		H	75-59	W
12/23	UC Irvine		H	74-73	W
12/29	Washington State*		H	80-71	W
12/31	Washington*		H	63-74	L
1/9	USC*		A	52-63	L

1/13 Oregon State* A 62-57 W

1/15 Oregon* A 67-59 W

1/20 California* H 86-84 W

1/22 Stanford* H 68-57 W

1/27 Arizona* A 74-85 L

1/29 Arizona State* A (OT) 73-72 W

2/2 USC* H 64-50 W

2/5 St. John's H 66-59 W

2/10 Oregon* H 64-54 W

2/12 Oregon State* H 69-61 W

2/17 Stanford* A 69-65 W

2/20 California* A (OT) 72-76 L

2/24 Arizona State* H 71-53 W

2/26 Arizona* -/10 H 71-49 W

3/3 Washington* A 63-70 L

3/5 Washington State* A (OT) 58-54 W

3/10 Oregon⁵ N 59-76 L

3/17 Michigan State⁶ N 78-76 W

3/19 Florida⁶ -/15 N 65-73 L

Final Polls: AP - NR, USA Today/Coaches - NR

* Pac-10 Conference game

1 NIT Season Tip-Off, 1st and 2nd rounds (Pauley Pavilion)

2 NIT Season Tip-Off, championship round (MSG - New York, N.Y.)

3 Pac-10/Big 12 Hardwood Series (Lawrence, Kan.)

4 John R. Wooden Classic (Anaheim, Calif.)

5 Pac-10 Conference Tournament (Staples Center)

6 NCAA Tournament

2011-12

Overall: 19-14

Pac-12: 11-7 (T-5th)

Coach: Ben Howland

Date	Opponent	AP Rk	Site	Score	W/L
11/11	Loyola Marymount	17/-	H	58-69	L
11/15	Middle Tennessee State ¹		H	66-86	L
11/21	Chaminade ²		N	92-60	W
11/22	Kansas ²	-/14	N	56-72	L
11/23	Michigan ²	-/15	N	63-79	L
11/28	Pepperdine		H	62-39	W
12/3	Texas		H	59-69	L
12/10	Pennsylvania ³		H	77-73	W
12/14	Eastern Washington		H	60-47	W
12/17	UC Davis ³		H	82-39	W
12/20	UC Irvine		H	89-60	W
12/23	Richmond		H	71-63	W
12/29	Stanford*		A	59-60	L
12/31	California*		A	69-85	L
1/5	Arizona ⁴		H	65-58	W
1/7	Arizona State ³		H	75-58	W
1/15	USC*		A	66-47	W
1/19	Oregon State*		A	84-87	L
1/21	Oregon*		A	68-75	L
1/26	Utah*		H	76-49	W
1/28	Colorado*		H	76-60	W
2/2	Washington*		A	69-71	L
2/4	Washington State*		A	63-60	W
2/9	Stanford*		H	72-61	W
2/11	California*		H	63-73	L
2/15	USC*		H	64-54	W
2/18	St. John's		A	63-66	L
2/23	Arizona State*		A	66-57	W
2/25	Arizona*		A	63-65	L
3/1	Washington State*		H	78-46	W
3/3	Washington*		H	75-69	W
3/7	USC ⁵		N	55-40	W
3/8	Arizona ⁵		N	58-66	L

Final Polls: AP - NR, USA Today/Coaches - NR

* Pac-12 Conference game

1 EA Sports Maui Invitational, opening round (L.A. Sports Arena)

2 EA Sports Maui Invitational (Lahaina, Hawaii)

3 John R. Wooden Classic (Anaheim, Calif.), designated UCLA home game

4 UCLA home game played at Honda Center (Anaheim, Calif.)

5 Pac-12 Tournament (Staples Center)

YEAR-BY-YEAR RESULTS

2012-13

Overall: 25-10 Pac-12: 13-5 (1st)

Championships Won: Pac-12

Coach: Ben Howland

Date	Opponent	AP Rk	Site	Score	W/L
11/9	Indiana State	13/-	H	86-59	W
11/13	UC Irvine ¹	13/-	H (OT)	80-79	W
11/15	James Madison ¹	13/-	H	100-70	W
11/19	Georgetown ²	11/-	N	70-78	L
11/20	Georgia ²	11/-	N	60-56	W
11/25	Cal Poly	24/-	H	68-70	L
11/28	Cal State Northridge	24/-	H	82-56	W
12/1	San Diego State ³	24/23	N	69-78	L
12/8	Texas ⁴		N	65-63	W
12/15	Prairie View A&M		H	95-53	W
12/18	Long Beach State		H	89-70	W
12/22	Fresno State		H	91-78	W
12/28	Missouri	-/7	H (OT)	97-94	W
1/3	California*		H	79-65	W
1/5	Stanford*		H	68-60	W
1/10	Utah*		A	57-53	W
1/12	Colorado*		A	78-75	W
1/17	Oregon State*	24/-	H	74-64	W
1/19	Oregon*	24/21	H	67-76	L
1/24	Arizona*	-/6	A	84-73	W
1/26	Arizona State*		A	60-78	L
1/30	USC*		H (OT)	71-75	L
2/7	Washington*		H	59-57	W
2/9	Washington State*		H	76-62	W
2/14	California*		A	63-76	L
2/16	Stanford*		A	88-80	W
2/24	USC*		A	75-59	W
2/27	Arizona State*		H (OT)	79-74	W
3/2	Arizona*	-/11	H	74-69	W
3/6	Washington State*		A	61-73	L
3/9	Washington*		A	61-54	W
3/14	Arizona State ⁵	24/-	N	80-75	W
3/15	Arizona ⁵	24/18	N	66-64	W
3/16	Oregon ⁵	24/-	N	69-78	L
3/22	Minnesota ⁶	24/-	N	63-83	L

Final Polls: AP - 24, USA Today/Coaches - ARV

* Pac-12 Conference game

1 Progressive Legends Classic, regional round (Pauley Pavilion)

2 Progressive Legends Classic, semifinal/final (Brooklyn, N.Y.)

3 John R. Wooden Classic (Anaheim, Calif.)

4 MD Anderson Proton Therapy Showcase, Reliant Stadium (Houston, Texas)

5 Pac-12 Tournament, MGM Grand Garden Arena (Las Vegas, Nev.)

6 NCAA Tournament, Erwin Center (Austin, Texas)

2013-14

Overall: 28-9 Pac-12: 12-6 (2nd)

Championships Won: Pac-12 Tournament

Coach: Steve Alford

Date	Opponent	AP Rk	Site	Score	W/L
11/8	Drexel	22/-	H	72-67	W
11/12	Oakland	24/-	H	91-60	W
11/18	Sacramento State	24/-	H	86-50	W
11/22	Morehead State ¹	24/-	H	81-70	W
11/24	Chattanooga ¹	24/-	H	106-65	W
11/28	Nevada ²	19/-	N	105-84	W
11/29	Northwestern ²	19/-	N	95-79	W
12/3	UC Santa Barbara	18/-	H	89-76	W
12/7	Missouri	18/-	A	71-80	L
12/14	Prairie View A&M		H	95-71	W
12/19	Duke ³	-/8	N	63-80	L
12/22	Weber State		H	83-60	W
12/28	Alabama		H	75-67	W
1/5	USC*		H	107-73	W
1/9	Arizona*	-/1	H	75-79	L
1/12	Arizona State*		H	87-72	W
1/16	Colorado*	25/21	A	69-56	W
1/18	Utah*	25/-	A	69-74	L
1/23	Stanford*		H	91-74	W
1/26	California*		H	76-64	W
1/30	Oregon*		A	70-68	W
2/2	Oregon State*		A	67-71	L
2/8	USC*		A	83-73	W
2/13	Colorado*		H	92-74	W
2/15	Utah*		H	80-66	W
2/19	California*	23/-	A	86-66	W
2/22	Stanford*	23/-	A	74-83	L
2/27	Oregon*		H (20T)	83-87	L
3/2	Oregon State*		H	74-69	W
3/6	Washington*		A	91-82	W
3/8	Washington State*		A	55-73	L
3/13	Oregon ⁴		N	82-63	W
3/14	Stanford ⁴		N	84-59	W
3/15	Arizona ⁴	-/4	N	75-71	W
3/21	Tulsa ⁵	20/-	N	63-83	W
3/23	Stephen F. Austin ⁵	20/-	N	77-60	W
3/27	Florida ⁶	20/1	N	68-79	L

Final Polls: AP - 20, USA Today/Coaches - 15

* Pac-12 Conference game

1 Continental Tire Las Vegas Invitational, regional round (Pauley Pavilion)

2 Continental Tire Las Vegas Invitational, semifinal/finals (Las Vegas, Nev.)

3 Carquest Auto Parts Classic, Madison Square Garden (New York, N.Y.)

4 Pac-12 Tournament, MGM Grand Garden Arena (Las Vegas, Nev.)

5 NCAA Tournament, Viejas Arena (San Diego, Calif.)

6 NCAA Tournament, FedEx Forum (Memphis, Tenn.)

2014-15

Overall: 22-14 Pac-12: 11-7 (4th)

Coach: Steve Alford

Date	Opponent	AP Rk	Site	Score	W/L
11/14	Montana State		H	113-78	W
11/16	Coastal Carolina		H	84-71	W
11/18	Nicholls State		H	107-74	W
11/23	Long Beach State		H	77-63	W
11/26	Oklahoma ¹	22/-	N	65-75	L
11/27	North Carolina ¹	22/5	N	56-78	L
11/28	UAB ¹	22/-	N	88-76	W
12/3	Cal State Fullerton		H	73-45	W
12/7	San Diego		H	75-68	W
12/10	UC Riverside		H	77-66	W
12/13	Gonzaga	-/9	H	74-87	L
12/20	Kentucky ²	-/1	N	44-83	L
12/28	Alabama		A	50-56	L
1/2	Colorado*		A	56-62	L
1/4	Utah*	-/10	A	39-71	L
1/8	Stanford*		H (20T)	86-81	W
1/11	California*		H	73-54	W
1/14	USC*		A	83-66	W
1/22	Oregon State*		A	55-66	L
1/24	Oregon*		A	64-82	L
1/29	Utah*	-/11	H	69-59	W
1/31	Colorado*		H	72-59	W
2/5	Stanford*		A	69-67	W
2/7	California*		A	62-64	L
2/11	Oregon State*		H	75-59	W
2/14	Oregon*		H	72-63	W
2/18	Arizona State*		A	66-68	L
2/21	Arizona*	-/7	A	47-57	L
2/25	Washington*		H	88-66	W
3/1	Washington State*		H	72-67	W
3/4	USC		H	85-74	W
3/12	USC ³		N	96-70	W
3/13	Arizona ³	-/5	N	64-70	L
3/19	SMU ⁴	-/20	N	60-59	W
3/21	UAB ⁴		N	92-75	W
3/27	Gonzaga ⁵	-/7	N	62-74	L

Final Polls: AP - NR, USA Today/Coaches - ARV

* Pac-12 Conference game

1 Battle 4 Atlantis, Atlantis Resort (Paradise Island, The Bahamas)

2 CBS Sports Classic, United Center (Chicago, Ill.)

3 Pac-12 Tournament, MGM Grand Garden Arena (Las Vegas, Nev.)

4 NCAA Tournament, KFC Yum! Center (Louisville, Ky.)

5 NCAA Tournament, NRG Stadium (Houston, Texas)

2015-16

Overall: 15-17 Pac-12: 6-12 (10th)

Coach: Steve Alford

Date	Opponent	AP Rk	Site	Score	W/L
11/13	Monmouth		H (OT)	81-84	L
11/15	Cal Poly		H	88-83	W
11/19	Pepperdine		H	81-67	W
11/23	UNLV ¹		N	77-75	W
11/24	Kansas ¹	-/5	N	73-92	L
11/25	Wake Forest ¹		N	77-80	L
11/29	CSUN		H	77-45	W
12/3	Kentucky	-/1	H	87-77	W
12/6	Long Beach State		H	83-76	W
12/12	Gonzaga	-/20	A	71-66	W
12/15	Louisiana-Lafayette	22/-	H	89-80	W
12/19	North Carolina ²	22/11	N	76-89	L
12/22	McNeese State		H	67-53	W
1/1	Washington*	25/-	A (20T)	93-96	L
1/3	Washington State*	25/-	A	78-85	L
1/7	Arizona*	-/7	H	87-84	W
1/9	Arizona State*		H	81-74	W
1/13	USC*		H	75-89	L
1/20	Oregon State*		A	82-73	W
1/23	Oregon*		A	72-86	L
1/28	Washington*		H	84-86	L
1/30	Washington State*		H	83-50	W
2/4	USC*		A	61-80	L
2/12	Arizona*	-/17	A	75-81	L
2/14	Arizona State*		A	78-65	W
2/18	Utah*		H	73-75	L
2/20	Colorado*		H	77-53	W
2/25	California*		A	63-75	L
2/27	Stanford*		A	70-79	L
3/2	Oregon*	-/9	H	68-76	L
3/5	Oregon State*		H	82-86	L
3/9	USC ³		N	71-95	L

* Pac-12 Conference game

1 Maui Jim Maui Invitational, Lahaina Civic Center (Lahaina, Maui, Hawaii)

2 CBS Sports Classic, Barclays Center (Brooklyn, N.Y.)

3 Pac-12 Tournament, MGM Grand Garden Arena (Las Vegas, Nev.)

STARTERS IN ELITE COMPANY

Four-Year Starters

Josh Shipp	2005, 2007-09
Cedric Bozeman	2002-04, 2006
Jason Kapono	2000-03
Dan Gadzuric	1999-02
Earl Watson	1998-01
Toby Bailey	1995-98
J.R. Henderson	1995-98
Charles O'Bannon	1994-97
Don MacLean	1989-92
Pooh Richardson	1986-89
Kenny Fields	1981-84
Rod Foster	1980-83
David Greenwood	1976-79
Don Bragg	1952-55
John Moore	1952-55

Freshman Starters

Aaron Holiday	2016
Kevon Looney	2015
Jordan Adams	2013
Kyle Anderson	2013
Shabazz Muhammad	2013
Joshua Smith	2011
Tyler Honeycutt	2010
Reeves Nelson	2010
Jrue Holiday	2009
Kevin Love	2008
Luc Richard Mbah a Moute	2006

Aaron Afflalo	2005
Jordan Farmer	2005
Josh Shipp	2005
Trevor Ariza	2004
Ryan Hollins	2003
Cedric Bozeman	2002
Jason Kapono	2000
Dan Gadzuric	1999
Jerome Moiso	1999
JaRon Rush	1999
Baron Davis	1998
Earl Watson	1998
Jelani McCoy	1996
Toby Bailey	1995
J.R. Henderson	1995
Charles O'Bannon	1994
Tracy Murray	1990
Darrick Martin	1989
Don MacLean	1989
Pooh Richardson	1986
Montel Hatcher	1984
Stuart Gray	1982
Kenny Fields	1981
Michael Holton	1980
Rod Foster	1980
David Greenwood	1976
Don Bragg	1952
John Moore	1952