



UCLA GYMNASTICS

UCLA Athletic Communications / J.D. Morgan Center / 325 Westwood Plaza / Los Angeles, CA 90095 / (310) 621-8398
Gymnastics Contact: Liza David (LDavid@athletics.ucla.edu)

2021 REGULAR SEASON SCHEDULE

January

Sat. 23	#15 Arizona State	W 196.150-195.950
Sun. 31	at #15 Arizona	W 196.750-195.075

February

Wed. 10	#11 BYU	W 196.600-196.325
Sun. 14	at Washington	W 195.625-193.500
Fri. 19	at #3 Utah	L 197.100-197.225
Sat. 27	Oregon State	W 197.025-196.500

March

Sat. 6	#9 California	L 196.925-198.050
Sat. 13	San Jose State	W 197.100-193.575
Sat. 20	at Pac-12 Champs.	P12N 6 p.m.

(West Valley City, Utah)

All times are listed in PT.

CAREER-BEST MARKS

Gymnast	V	UB	BB	FX	AA
Andres	9.825	—	9.775*	9.875	—
Campbell	9.950	9.875	9.925	9.950	39.625
Dennis	9.950	9.950	9.975	9.975	39.475
Esparza	—	9.900	9.900	—	—
Flatley	9.750	9.975	9.950	9.950	39.275
Frazier	9.875	9.950	9.925	9.950	39.550
Hogan	—	—	—	9.450	—
Kooyman	—	9.900	9.600	9.825	—
Lashbrooke	9.825	—	—	9.900	—
Poston	9.900	—	9.900	—	—
Sakti	9.800	—	9.950	9.925	—
Shapiro	—	9.775	9.925	—	—
Steele	—	9.925	—	—	—
Taubman	—	9.825	—	9.650	—
Tratz	9.925	9.775	—	9.950	—
Ulias	—	9.925	—	9.725	—
Wright	9.875	—	—	9.875	—
Team	49.725	49.825	49.750	49.875	198.875

*denotes exhibition routine

2021 SEASON-BEST MARKS

Gymnast	V	UB	BB	FX	AA
Andres	9.825	—	—	9.850	—
Campbell	9.950	9.875	9.925	9.950	39.625
Dennis	9.925	9.950	9.900	9.950	39.475
Esparza	—	9.900	9.900	—	—
Flatley	—	—	—	—	—
Frazier	9.875	9.950	9.925	9.925	39.550
Hogan	—	—	—	9.450	—
Kooyman	—	9.850	9.600	—	—
Lashbrooke	—	—	—	—	—
Poston	9.875	—	9.875	—	—
Sakti	—	—	9.950	9.625	—
Shapiro	—	—	9.725	—	—
Steele	—	9.750	—	—	—
Taubman	—	9.825	—	9.650	—
Tratz	9.875	9.775	—	9.950	—
Ulias	—	9.925	—	9.725	—
Wright	9.775	—	—	9.875	—
Team	49.375	49.550	49.425	49.500	197.100

No. 13 UCLA at Pac-12 Championships

Saturday, Mar. 20, 2021 – 7 p.m. MT / 6 p.m. PT

West Valley City, Utah

MEET INFORMATION

Venue:	Maverik Center
Time:	Session 1: 12 p.m. MT / 11 a.m. PT Session 2: 7 p.m. MT / 6 p.m. PT
Television:	Pac-12 Network
TV Talent:	Jim Watson (play-by-play) Amanda Borden (analyst)
Live Stats:	pac-12.com/gymchamps

MEET SCHEDULE

SESSION 1:				
Rotation	V	UB	BB	FX
1	ARIZ	OSU	STAN	WASH
2	WASH	ARIZ	OSU	STAN
3	STAN	WASH	ARIZ	OSU
4	OSU	STAN	WASH	ARIZ
SESSION 2:				
Rotation	V	UB	BB	FX
1	CAL	UTAH	ASU	UCLA
2	UCLA	CAL	UTAH	ASU
3	ASU	UCLA	CAL	UTAH
4	UTAH	ASU	UCLA	CAL

UCLA COMPETES FOR 20TH PAC-12 CHAMPIONSHIP

No. 13 UCLA (6-2) is the No. 4 seed at the Pac-12 Gymnastics Championships, which will take place on Saturday, Mar. 20 in West Valley City, Utah. The two-time defending champion Bruins, who are seeking their 20th Pac-12 team title, will compete in the evening session at 7pm MT, along with No. 1 seed California, No. 2 seed Utah and No. 3 seed Arizona State. Competing in the afternoon session at 12pm MT are No. 5 seed Oregon State, No. 6 seed Arizona, No. 7 seed Washington and No. 8 seed Stanford. Seeding is determined by national rankings, which are based on National Qualifying Score (NQS). The Pac-12 champion will be the team with the highest score from the two sessions. Individual champions will also be determined via combined sessions.

FOLLOW LIVE

Both sessions of the Pac-12 Championships will be televised live on Pac-12 Network, with Jim Watson and Amanda Borden on the call. Live stats will be available at pac-12.com/gymchamps, and live updates can be found on Twitter by following @UCLAGymnastics.

ROTATION ORDER

UCLA will begin the meet on floor exercise, where the Bruins are ranked No. 1 in the conference and No. 6 in the nation. After floor, the Bruins will move to vault, uneven bars and then conclude on balance beam. Top-seeded California chose the Olympic order and will start on vault. No. 2 seed Utah chose to start on uneven bars, and No. 3 seed Arizona State elected to begin on balance beam. In Session 1, Oregon State opted to start on uneven bars. Arizona will begin on vault, Washington on floor exercise and Stanford on balance beam.

CONFERENCE CHAMPIONSHIP HISTORY

UCLA has won the most conference championships among the eight member schools with 19 Pac-12 titles (1987, 1988, 1989, 1990, 1993, 1995, 1997, 1999, 2000, 2002, 2003, 2005, 2007, 2009, 2010, 2012, 2016, 2018, 2019) and 1 WCAA title (1981) in 32 years. Oregon State (1991, 1992, 1994, 1996, 2011, 2013), Stanford (1998, 2001, 2004, 2006, 2008) and Utah (2014, 2015, 2017) are the only other teams to win Pac-12 titles.

UCLA has dominated individually at the Pac-12 Championships as well, winning a conference-best 100 individual titles. The Bruins have been especially dominant in the all-around, winning 20 titles, including the most recent - Kyla Ross in 2019. UCLA gymnasts have won 23 titles on uneven bars, 20 each on balance beam and floor exercise, and 17 on vault.

LOOK BACK AT 2019 PAC-12 CHAMPIONSHIPS

At the last Pac-12 Championship in 2019, UCLA posted a Pac-12 Championship record and season-high 198.400 to capture its 19th Pac-12 team title. Bruins won all four events and the all-around, with Kyla Ross winning her second all-around title and first outright, defending her uneven bars championship with a perfect 10 and sharing the floor exercise title with Katelyn Ohashi and Utah's MyKayla Skinner with a 10.0. Ohashi tied with teammate Grace Glenn for the balance beam title, with each scoring 9.950, and Felicia Hano tied for first on vault with a 9.950.

LAST TIME OUT

UCLA concluded the regular season with a 197.100-193.575 win over San Jose State on Mar. 13. The Bruins tied their season-high team total and set a new season-best on floor exercise with a 49.500 to finish the year unbeaten at home with a 4-0 record. Freshman Chae Campbell won the all-around for the second-straight week, scoring 39.500. She also tied for first place on floor exercise with seniors Nia Dennis and Pauline Tratz, each scoring 9.925. UCLA swept the individual events, with Dennis winning vault, Margzetta Frazier winning uneven bars and Samantha Sakti taking first on balance beam.

FLATLEY EXPECTED TO RETURN FOR POSTSEASON

Junior Norah Flatley is expected to return to the uneven bars lineup this weekend at the Pac-12 Championships. Flatley missed the entire regular season after injuring her ankle in warmups at the season opener. A second-team All-

NATIONAL RANKINGS (WEEK 10 - 3/15)

RK	TEAM	NQS	AVG.
1	Oklahoma	197.944	197.302
1	Florida	197.944	197.672
3	Michigan	197.788	197.164
4	LSU	197.700	197.328
5	California	197.575	197.044
6	Utah	197.469	197.211
7	Minnesota	197.344	196.811
8	Alabama	197.319	196.950
9	Arkansas	197.225	196.944
9	Denver	197.225	196.778
11	Arizona State	197.088	196.428
12	BYU	197.063	196.632
13	UCLA	197.038	196.659
14	Kentucky	196.969	196.513
15	Auburn	196.831	196.278
16	Illinois	196.781	196.225
16	Georgia	196.781	196.425
18	Iowa	196.713	196.458
19	Boise State	196.706	196.106
20	Southern Utah	196.663	196.030
21	Utah State	196.531	195.908
22	Iowa State	196.475	195.894
23	Missouri	196.444	195.741
24	Oregon State	196.419	195.456
25	Central Michigan	196.275	195.322

NATIONAL RANKINGS - TOP 25 *as of 3/15*

Gymnast	V	UB	BB	FX	AA
Campbell	–	–	–	15t	17
Dennis	23t	–	–	–	–
Frazier	–	7	–	–	18t
Sakti	–	–	20t	–	–
Team	8t	13t	19	6t	13

PAC-12 RANKINGS - TOP 10 *as of 3/15*

Gymnast	V	UB	BB	FX	AA
Campbell	6	–	7t	2t	4
Dennis	4t	5t	–	–	–
Frazier	–	1	–	8t	5t
Sakti	–	–	4	–	–
Tratz	–	–	–	7	–
Team	3	3	4	1	4

EVENT TITLES

Gymnast	V	UB	BB	FX	AA
Campbell	4	–	1	3	4
Dennis	4	2	1	4	1
Esparza	–	2	–	–	–
Frazier	–	4	1	1	2
Sakti	–	–	3	–	–
Tratz	–	–	–	2	–

TOP 3 FINISHES

Gymnast	V	UB	BB	FX	AA
Campbell	5	1	3	5	5
Dennis	7	2	1	5	1
Esparza	–	4	2	–	–
Frazier	1	6	2	6	7
Kooyman	–	1	–	–	–
Poston	3	–	1	–	–
Sakti	–	–	6	–	–
Tratz	2	–	–	4	–
Ulias	–	3	–	–	–
Wright	–	–	–	1	–

American on uneven bars in 2019, Flatley holds a career-high of 9.975 on the event and averages 9.860 on bars in her career, with eight scores of 9.9 or higher.

DENNIS SELECTED AS FINALIST FOR AAI AWARD

Nia Dennis has been selected as one of six finalists for the AAI Award, which is presented to the most outstanding senior female gymnast in the country. She joins Alyssa Baumann (Florida), Lynzee Brown (Denver), Kyana George (California), Lexy Ramler (Minnesota), and Anastasia Webb (Oklahoma) as finalists for the prestigious award, which will be announced in April. In its history, UCLA has had four winners – Vanessa Zamarripa in 2013, Jamie Dantscher in 2004, Mohini Bhardwaj in 2001 and Donna Kemp in 1984. This is the fourth consecutive year a Bruin has been an AAI Finalist, as Dennis joins Kyla Ross (2020), Katelyn Ohashi (2019), and Christine Peng-Peng Lee (2018 and 2017).

Dennis has recorded a career-high 39.475 in the all-around this season and is the only Bruin to score 9.9 or higher on all four events, with highs of 9.950 on floor exercise and uneven bars, 9.925 on vault and 9.900 on balance beam. She has a team-best 12 scores of 9.9 or higher, including a team-high three 9.95s. The Bruins' top vaulter, she is averaging 9.872 and ranks 23rd in the nation on the event. She is also Top 30 on uneven bars.

She is a 2019 first-team All-American on uneven bars and helped the Bruins capture the 2018 NCAA Championship and 2018 and 2019 Pac-12 Championships. A four-time All-Pac-12 honoree, she also has two Pac-12 Specialist of the Week awards in her career, in 2021 and 2019. Throughout her career, she has 23 individual event wins, including 11 this season.

PULLA POWER

Senior Pauline Tratz has been one of UCLA's most consistent athletes this season, averaging over 9.8 on vault and floor exercise. She has been especially hot on floor exercise in the last five meets, averaging 9.905 with a high of 9.950 on Mar. 6 at California. In the Bruins' regular season finale Mar. 13, Tratz tied for first place on floor exercise with a 9.925 and recorded a season-high 9.875 on vault to tie for second. She was subsequently named the Pac-12 Coaches Choice Award winner.

Known primarily for her vault and floor exercise, Tratz added uneven bars and balance beam to her repertoire in her final season. At the start of the year, she hit big clutch performances on uneven bars in the first two meets while the Bruins were short-handed on the event due to injuries. Put in the anchor position and under pressure to hit due to a fall from an earlier competitor, she delivered each time, scoring 9.65 in the opener and improving to 9.775 the following week at Arizona. She also performed an exhibition routine on balance beam for the first-time ever as a Bruin on Senior Day and hit her routine.

IT'S JANET, MISS JACKSON ...

Junior Margzetta Frazier received the call of a lifetime on Feb. 19 before the Bruins competed at Utah. On the line, on FaceTime, was none other than superstar Janet Jackson. A week earlier, Jackson had shared Frazier's new Janet Jackson floor routine to her social media, helping Frazier's routine go viral. Jackson also posted video of her call, where she told a tearful Frazier that she inspired her and that she would like her to teach her some gymnastics. Frazier has since been featured on Good Morning America, Entertainment Tonight and Access Hollywood.

Frazier has done it all for the Bruins this season, competing in the all-around in every meet. She has scored 39+ in each meet, with a high of 39.550 set while winning the all-around Feb. 27 against Oregon State. She leads the team with 12 9.9+ scores and has a team-high four victories on uneven bars. Frazier currently ranks 18th in the nation in the all-around and seventh on uneven bars.

DENNIS BREAKS THE INTERNET ... AGAIN

For the second time in as many years, and after her first performance of her new floor exercise routine, Nia Dennis went viral. Dennis' routine celebrating black culture picked up steam in a hurry after it was posted to social media the day after the Bruins' season opener. Within an hour, it went viral, and the video currently has 11M views on Twitter alone. Her routine was shared by the likes of Michelle Obama, Janet Jackson, Missy Elliott, Common and Kerry Washington. Dennis made a repeat visit to The Ellen Show and appeared on the Today Show, the NBA on TNT and Access Hollywood. Last season, Dennis' Beyonce routine also went viral, as did a TikTok video of her hitting the woah in her routines.

2021 HONORS

Chae Campbell

Pac-12 Freshman of the Week (2/2, 2/16, 3/9)

Nia Dennis

AAI Award Finalist

Pac-12 Specialist of the Week (1/27)

Frida Esparza

Pac-12 Freshman of the Week (1/27)

Margzetta Frazier

Pac-12 Gymnast of the Week (3/2)

Pauline Tratz

Pac-12 Coaches Choice (3/16)

Sara Ulias

Pac-12 Coaches Choice (3/2)

9.95+ SCORES

Gymnast	V	UB	BB	FX	Total
Campbell	1	–	–	1	2
Dennis	–	1	–	2	3
Frazier	–	2	–	–	2
Sakti	–	–	1	–	1
Team	1	3	1	3	8

9.9+ SCORES

Gymnast	V	UB	BB	FX	Total
Campbell	2	–	2	6	10
Dennis	4	3	1	4	12
Esparza	–	2	1	–	3
Frazier	–	5	2	5	12
Sakti	–	–	6	–	6
Tratz	–	–	–	4	4
Ulias	–	1	–	–	1
Team	6	11	12	19	48

Dennis is not resting on her internet fame. She recorded a career-high 39.475 in the all-around this season and is the only Bruin to score 9.9 or higher on all four events, with a pair of 9.95s on floor. She is also tied for the team lead in individual victories with 12. Dennis is a finalist for this year's AAI Award, presented to the top senior in the nation.

FRESH STARS

Although more than half of UCLA's expected freshman class did not make it to campus this year as they pursued Olympic berths, the three freshmen who are in Westwood are making a huge impression on the Bruin team. All three freshmen have received a Pac-12 weekly honor this season, with Chae Campbell winning Freshman of the Week honors three times, Frida Esparza winning once, and Sara Ulias receiving the Coaches Choice award.

Campbell has become an all-around force, recording a high of 39.625 on Mar. 6 and ranking 17th in the nation and fourth in the Pac-12. She already has career-bests of 9.925 or better on vault, beam and floor, along with a 9.875 on bars, and has 12 individual titles. Esparza has two uneven bars victories and won Pac-12 Freshman of the Week honors after her first meet, during which she won bars with a 9.9 and scored 9.8 on beam. Esparza improved upon her beam score the following week, scoring 9.9. Ulias made her competitive debut on Feb. 10 against BYU, scoring 9.725 on uneven bars and improved her score to 9.875 in a second-place finish at Utah and 9.925 with a third-place results against Oregon State. She also debuted on floor exercise on Feb. 14, scoring 9.725. Esparza has four Top 3 finishes on uneven bars, and Ulias has three.

FLOORED BY FLOOR

UCLA's floor exercise lineup has turned heads in a big way, with not just one but two routines going viral, plus another one gaining attention from national media. The Bruins are ranked sixth nationally and first in the Pac-12 on floor and averaging 49.278, with a high of 49.500 set a week ago. All six of the floor regulars have career-highs of 9.875 or better, and four have career-bests of 9.950 or better. Nia Dennis, whose floor routines have gone viral in each of the last two years, has scored 9.950 twice this season with her routine she calls "The Culture", and she has a career-best of 9.975, set a year ago. Margzetta Frazier went viral with her Janet Jackson routine, scoring a season-high of 9.925 the first time she competed the new routine. She has a career-high of 9.950 and is currently averaging 9.878 this season. Chae Campbell averages a team-high 9.911 on floor, the only Bruin with a season average of 9.9 or better, and her career-best 9.950 routine at Utah was shared by SportsCenter. Pauline Tratz has scored 9.950 and 9.925 in her last two meets and is averaging 9.864. Sekai Wright's 90's Boy Band routine has become a fan favorite, and she has scored a career-best 9.875 three times in her last four meets. Emma Andres has scored as high as 9.825 this season and has a career-high of 9.875.

VAULTING UP

The Bruins have had their best vault rotations of the season the last three weeks, averaging 49.308 in those last three meets and 49.197 overall on the year. Against Oregon State on Feb. 27, they stuck five of six vaults to score 49.225. Nia Dennis earned a season-best 9.925 to win the event. Margzetta Frazier (9.850), Emma Andres (9.825), Pauline Tratz (9.800) and Chae Campbell (9.800) also stuck their Yurchenko layout fulls, and Kendal Poston had a small hop on her handspring pike front half, scoring 9.825. Andres' vault was her first one this season, and it set a new career-high for her. The Bruins improved their season-high a week later at Cal, scoring 49.375, thanks to a perfect 9.95 score from Campbell and a second-straight 9.925 from Dennis. The Bruins have scored 49.1 or higher on vault in seven of eight meets and rank eighth nationally on the event. Five Bruin vaulters have season averages over 9.8 - Dennis (9.872), Campbell (9.869), Poston (9.841), Andres (9.825) and Tratz (9.816). Frazier is just a hair under 9.8, at 9.797.

RAISING THE BAR

The Bruins' uneven bars squad had a huge performance on Feb. 27, scoring 49.550, the team's highest event score on any event this season and UCLA's highest bars score since Apr. 6, 2019. UCLA's bar team was boosted by the return of Nia Dennis on Feb. 10 and are looking to add another All-American in Norah Flatley this weekend. Dennis, a 2019 first-team All-American, has won bars twice this season, and she tied her career-high of 9.950 on Feb. 27 against Oregon State. Margzetta Frazier ranks seventh nationally and first in the Pac-12 on uneven bars and owns five 9.9+ scores this season, including two 9.95s in the last three meets. Freshman Sara Ulias joined the 9.9 club with her career-high 9.925 on Feb. 27. She has earned Top 3 finishes

on bars in three of her last four meets. Frida Esparza has also excelled on the event, winning bars twice with scores of 9.9. She is averaging 9.8625 in her last six meets. At the top of the lineup, Chae Campbell scored a career-high 9.875 Mar. 6, and Savannah Kooyman has a season-best of 9.850. The Bruins have scored 49.1 or higher in each of their last six meets.

BEAM ME UP

UCLA will end the Pac-12 Championships on balance beam, which is nothing new for the Bruins on the road. UCLA's best beam score this season came at Utah, a 49.425 in a six-for-six rotation. Kendal Poston led off on beam for the first time in her career and scored a season-high 9.875. Samantha Sakti followed with a 9.900, and Margzetta Frazier scored a career-high and meet-winning 9.925. Nicole Shapiro came in as a last-minute replacement and hit her routine for a 9.725, and freshmen Frida Esparza and Chae Campbell closed with scores of 9.875 and 9.850, respectively.

Sakti has been the Bruins' biggest scorer on beam, hitting 9.9 or higher six times in eight meets, with a career-high-tying 9.950 at Arizona on Jan. 31. Five different gymnasts (Campbell, Dennis, Esparza, Frazier and Sakti) have scored 9.9 or better on beam this season, with a total of 12 9.9+ scores. The only other event the Bruins have scored more 9.9s on is floor exercise. Poston, Shapiro and Norah Flatley have also scored 9.9 or higher on beam in their career.

IN THE RANKINGS

UCLA sits at No. 13 in the national rankings, which are now based on National Qualifying Score (NQS). The NQS this season is calculated by average of the four highest scores, two of which must be on the road. The Bruins rank No. 6 on floor, No. 8 on vault, No. 13 on bars and No. 19 on beam.

Individually, Margzetta Frazier ranks 18th in the all-around and seventh on bars. Chae Campbell is 17th in the all-around and 15th on floor. Samantha Sakti ranks 20th on beam, and Nia Dennis 23rd on vault.

FRAZIER, STEELE JOIN PAC-12'S DIVERSITY & INCLUSION GROUP

Junior Margzetta Frazier and sophomore Kalyany Steele will serve as UCLA representatives on the newly-formed Gymnasts for Peace, Action, and Change (G-PAC). This student-athlete driven organization has representatives from all eight Pac-12 gymnastics programs. Together, these gymnasts will work to share ideas, formulate meet themes, host webinars, welcome guest speakers to campus, and more. G-PAC's mission statement is as follows: G-PAC facilitates an environment where diversity and inclusion is both welcomed and encouraged. Strives to ignite lasting change by sharing experiences, providing others with education and outside resources, and creating an authentic safe space for fellow student-athletes. Inspires others to thrive at the edge of their comfort zone furthering the journey to true equality.

UCLA SIGNS TOP-RANKED RECRUITING CLASS

UCLA has inked the No. 1-ranked signing class in the nation, according to College Gym News. The Bruins' top-ranked class includes U.S. National Team members Jordan Chiles, Emily Lee and Emma Malabuyo, Canadian World medalist Ana Padurariu and U.S. senior elite Alexis Jeffrey. The rankings are based on a points system from the website's recruit ratings system and include gymnasts who signed during the 2020 early signing period (Lee, Jeffrey) and those who signed previously but have deferred enrollment (Chiles, Malabuyo, Padurariu). The ranking does not include Canadian National Team member Brooklyn Moors, who has enrolled this year but will redshirt the season. Chiles and Lee finished first and third, respectively, at the recent Winter Cup.

NO. 1 IN SOCIAL MEDIA FOLLOWERS

UCLA Gymnastics has the largest social media followings in all of women's collegiate sports, ranking No. 1 in combined followers on Facebook, Instagram and Twitter, a total over 1 million. The team has an additional reach of over 1 million on TikTok (447k followers) and Snapchat (582k subscribers). The Bruins rank first among all NCAA gymnastics teams on Instagram (420k), Facebook (546k) and Twitter (80.7k).

UCLA Gymnastics is the most followed collegiate women's team in the nation on Instagram and the second-most followed women's sports team account after the U.S. Soccer Women's National Team. Among all UCLA teams, gymnastics ranks first on Instagram and Facebook. Follow the Bruins at @UCLAGymnastics on Instagram, Twitter, TikTok and Snapchat and on Facebook at facebook.com/uclagymnastics.

Statistics by Gymnast

UCLA: 2020 - 2021 Season

Page: 1

Emma Andres

Date	Team	Vault	Bars	Beam	Floor	AllArr
H 1/23/2021	UCLA vs. Arizona State				9.575	
A 1/31/2021	UCLA at Arizona				9.675	
H 2/10/2021	UCLA vs. BYU				9.775	
A 2/14/2021	UCLA at Washington				9.825	
A 2/19/2021	UCLA at Utah				9.825	
H 2/27/2021	UCLA vs. Oregon St	9.825			9.625	
A 3/06/2021	UCLA at Cal				9.775	
H 3/13/2021	UCLA vs. San Jose State				9.850	
	Average	9.825			9.741	
	Season High	9.825			9.850	
	Career High	9.825		9.775	9.875	

Chae Campbell

Date	Team	Vault	Bars	Beam	Floor	AllArr
H 1/23/2021	UCLA vs. Arizona State	9.850	8.950	9.725	9.900	38.425
A 1/31/2021	UCLA at Arizona	9.900	9.750	9.925	9.850	39.425
H 2/10/2021	UCLA vs. BYU	9.850	9.850	9.775	9.900	39.375
A 2/14/2021	UCLA at Washington	9.875		9.900		
A 2/19/2021	UCLA at Utah	9.850	9.775	9.850	9.950	39.425
H 2/27/2021	UCLA vs. Oregon St	9.800	9.850	9.425	9.925	39.000
A 3/06/2021	UCLA at Cal	9.950	9.875	9.875	9.925	39.625
H 3/13/2021	UCLA vs. San Jose State	9.875	9.825	9.875	9.925	39.500
	Average	9.869	9.696	9.794	9.911	39.254
	Season High	9.950	9.875	9.925	9.950	39.625
	Career High	9.950	9.875	9.925	9.950	39.625

Nia Dennis

Date	Team	Vault	Bars	Beam	Floor	AllArr
H 1/23/2021	UCLA vs. Arizona State	9.900		9.375	9.950	
A 1/31/2021	UCLA at Arizona	9.875		9.800	9.950	
H 2/10/2021	UCLA vs. BYU	9.850	9.800	9.900	9.925	39.475
A 2/14/2021	UCLA at Washington	9.800	9.850	9.300		
A 2/19/2021	UCLA at Utah	9.800	9.900		9.725	
H 2/27/2021	UCLA vs. Oregon St	9.925	9.950		9.850	
A 3/06/2021	UCLA at Cal	9.925	9.900	9.350	9.625	38.800
H 3/13/2021	UCLA vs. San Jose State	9.900	8.325	9.200	9.925	37.350
	Average	9.872	9.621	9.510	9.850	38.542
	Season High	9.925	9.950	9.900	9.950	39.475
	Career High	9.950	9.950	9.975	9.975	39.475

Frida Esparza

Date	Team	Vault	Bars	Beam	Floor	AllArr
H 1/23/2021	UCLA vs. Arizona State		9.900	9.800		
A 1/31/2021	UCLA at Arizona	0.000	9.375	9.900		
H 2/10/2021	UCLA vs. BYU		9.900	9.750		
A 2/14/2021	UCLA at Washington		9.875	9.750		
A 2/19/2021	UCLA at Utah		9.800	9.875		
H 2/27/2021	UCLA vs. Oregon St		9.875	9.875		
A 3/06/2021	UCLA at Cal		9.850	9.675		
H 3/13/2021	UCLA vs. San Jose State		9.875	9.825		
	Average		9.806	9.806		
	Season High		9.900	9.900		
	Career High		9.900	9.900		

Scores in italic set or tied a personal record. Scores in bold set or tied a team record. Scores in light gray were exhibition.

Statistics by Gymnast

UCLA: 2020 - 2021 Season

Page: 2

Margzetta Frazier

Date	Team	Vault	Bars	Beam	Floor	AllArr	
H 1/23/2021	UCLA vs. Arizona State	9.725	9.800	9.800	9.900	39.225	
A 1/31/2021	UCLA at Arizona	9.825	9.900	9.600	9.900	39.225	
H 2/10/2021	UCLA vs. BYU	9.800	9.850	9.725	9.925	39.300	
A 2/14/2021	UCLA at Washington	9.675	9.925	9.825	9.900	39.325	
A 2/19/2021	UCLA at Utah	9.875	9.750	9.925	9.850	39.400	
H 2/27/2021	UCLA vs. Oregon St	9.850	9.950	9.900	9.850	39.550	
A 3/06/2021	UCLA at Cal	9.825	9.950	9.825	9.925	39.525	
H 3/13/2021	UCLA vs. San Jose State	9.800	9.900	9.775	9.775	39.250	
		Average	9.797	9.878	9.797	9.878	39.350
		Season High	9.875	9.950	9.925	9.925	39.550
		Career High	9.875	9.950	9.925	9.950	39.550

Paige Hogan

Date	Team	Vault	Bars	Beam	Floor	AllArr
H 1/23/2021	UCLA vs. Arizona State				9.450	
		Average			9.450	
		Season High			9.450	
		Career High			9.450	

Savannah Kooyman

Date	Team	Vault	Bars	Beam	Floor	AllArr
H 1/23/2021	UCLA vs. Arizona State		9.800	9.600		
A 1/31/2021	UCLA at Arizona		9.825			
H 2/10/2021	UCLA vs. BYU		9.725	9.700		
A 2/14/2021	UCLA at Washington		9.750			
H 2/27/2021	UCLA vs. Oregon St		9.850			
A 3/06/2021	UCLA at Cal		9.825			
H 3/13/2021	UCLA vs. San Jose State		9.650			
		Average	9.775	9.600		
		Season High	9.850	9.600		
		Career High	9.900	9.700	9.825	

Kendal Poston

Date	Team	Vault	Bars	Beam	Floor	AllArr
H 1/23/2021	UCLA vs. Arizona State	9.875		9.775		
A 1/31/2021	UCLA at Arizona	9.825		9.725		
H 2/10/2021	UCLA vs. BYU	9.825		9.800		
A 2/14/2021	UCLA at Washington	9.800		9.850		
A 2/19/2021	UCLA at Utah	9.825		9.875		
H 2/27/2021	UCLA vs. Oregon St	9.825		9.825		
A 3/06/2021	UCLA at Cal	9.875		9.125		
H 3/13/2021	UCLA vs. San Jose State	9.875		9.800		
		Average	9.841	9.722		
		Season High	9.875	9.875		
		Career High	9.900	9.900	8.950	

Samantha Sakti

Date	Team	Vault	Bars	Beam	Floor	AllArr
H 1/23/2021	UCLA vs. Arizona State			9.900		
A 1/31/2021	UCLA at Arizona			9.950		
H 2/10/2021	UCLA vs. BYU			9.125	9.450	
A 2/14/2021	UCLA at Washington			9.325	9.625	
A 2/19/2021	UCLA at Utah			9.900		
H 2/27/2021	UCLA vs. Oregon St			9.900	0.000	
A 3/06/2021	UCLA at Cal			9.925		

Scores in italic set or tied a personal record. Scores in bold set or tied a team record. Scores in light gray were exhibition.

Statistics by Gymnast

UCLA: 2020 - 2021 Season

Page: 3

H	3/13/2021	UCLA vs. San Jose State					9.900
			Average				9.741
			Season High				9.625
			Season High				9.950
			Career High	9.800			9.625
			Career High				9.950
			Career High				9.925

Nicole Shapiro

Date	Team	Vault	Bars	Beam	Floor	AllArr
A	1/31/2021	UCLA at Arizona		8.400		
A	2/19/2021	UCLA at Utah		9.725		
H	2/27/2021	UCLA vs. Oregon St		8.375		
H	3/13/2021	UCLA vs. San Jose State		9.850		
			Average			
			Season High			
			Season High			
			Career High	9.775		
			Career High			
			Career High			

Kalyany Steele

Date	Team	Vault	Bars	Beam	Floor	AllArr
A	2/14/2021	UCLA at Washington	9.725			
A	2/19/2021	UCLA at Utah	9.750			
H	2/27/2021	UCLA vs. Oregon St	9.800			
H	3/13/2021	UCLA vs. San Jose State	9.250			
			Average	9.738		
			Season High	9.750		
			Season High	9.750		
			Career High	9.925		
			Career High			
			Career High			

Sara Taubman

Date	Team	Vault	Bars	Beam	Floor	AllArr
H	1/23/2021	UCLA vs. Arizona State	9.825			
A	1/31/2021	UCLA at Arizona	9.725			
H	2/10/2021	UCLA vs. BYU	8.725			
A	2/14/2021	UCLA at Washington			9.650	
			Average	9.775		
			Season High	9.825		
			Season High	9.825		
			Career High	9.825		
			Career High			
			Career High			

Pauline Tratz

Date	Team	Vault	Bars	Beam	Floor	AllArr
H	1/23/2021	UCLA vs. Arizona State	9.850	9.650		9.650
A	1/31/2021	UCLA at Arizona	9.800	9.775		9.875
H	2/10/2021	UCLA vs. BYU	9.775			9.900
A	2/14/2021	UCLA at Washington	9.800			
A	2/19/2021	UCLA at Utah	9.825			9.900
H	2/27/2021	UCLA vs. Oregon St	9.800			9.850
A	3/06/2021	UCLA at Cal	9.800			9.950
H	3/13/2021	UCLA vs. San Jose State	9.875	9.475		9.925
			Average	9.816		
			Season High	9.713		
			Season High	9.875		
			Career High	9.775		
			Career High	9.775		
			Career High	9.475		
			Career High			
			Career High			

Sara Ulias

Date	Team	Vault	Bars	Beam	Floor	AllArr
H	1/23/2021	UCLA vs. Arizona State			9.500	
A	1/31/2021	UCLA at Arizona		9.725	9.575	
H	2/10/2021	UCLA vs. BYU		9.725		
A	2/14/2021	UCLA at Washington		9.225	9.725	
A	2/19/2021	UCLA at Utah		9.875		
H	2/27/2021	UCLA vs. Oregon St		9.925		
A	3/06/2021	UCLA at Cal		9.875		

Scores in italic set or tied a personal record. Scores in bold set or tied a team record. Scores in light gray were exhibition.

Statistics by Gymnast

UCLA: 2020 - 2021 Season

Page: 4

H	3/13/2021	UCLA vs. San Jose State					9.850
			Average				9.746
			Season High				9.925
			Career High				9.925

Lilia Waller

Date	Team	Vault	Bars	Beam	Floor	AllArr	
H	3/13/2021	UCLA vs. San Jose State					8.325
			Average				
			Season High				
			Career High				8.325

Sekai Wright

Date	Team	Vault	Bars	Beam	Floor	AllArr	
A	1/31/2021	UCLA at Arizona					9.500
H	2/10/2021	UCLA vs. BYU	9.725				9.775
A	2/14/2021	UCLA at Washington					9.800
A	2/19/2021	UCLA at Utah					9.875
H	2/27/2021	UCLA vs. Oregon St					9.850
A	3/06/2021	UCLA at Cal	9.775				9.875
H	3/13/2021	UCLA vs. San Jose State	9.675				9.875
			Average				9.725
			Season High				9.775
			Career High				9.875

Scores in italic set or tied a personal record. Scores in bold set or tied a team record. Scores in light gray were exhibition.

TV ROSTER



Emma
ANDRES
(AWN-drayss)
5-6/So./Rocklin, Calif.



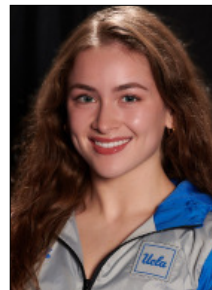
Chae
CAMPBELL
(SHAY)
5-7/Fr./Carrollton, Texas



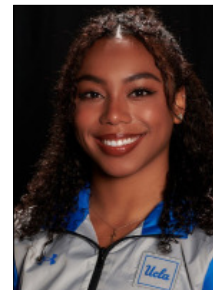
Nia
DENNIS
(KNEE-uh)
5-1/Sr./Columbus, Ohio



Frida
ESPARZA
(FREE-duh)
5-4/Fr./Pittsburg, Calif.



Norah
FLATLEY
5-1/Jr./West Des Moines, Iowa



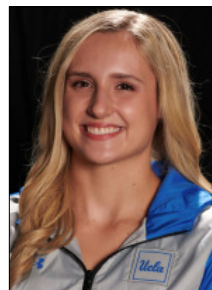
Margzetta
FRAZIER
(Marg-ZETTA)
5-1/Jr./Sicklerville, N.J.



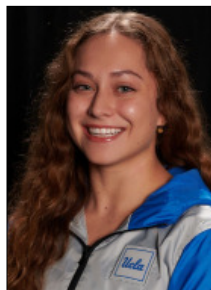
Paige
HOGAN
5-2/So./Simi Valley, Calif.



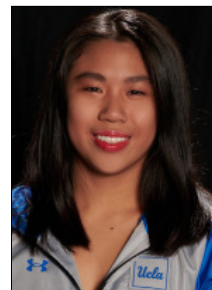
Savannah
KOOYMAN
(COY-mun)
5-3/Sr./Laguna Hills Calif.



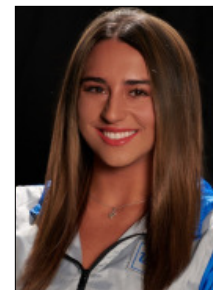
Chloe
LASHBROOKE
5-4/So./Scottsdale, Ariz.



Kendal
POSTON
(POST-un)
5-1/Sr./Foothill Ranch, Calif.



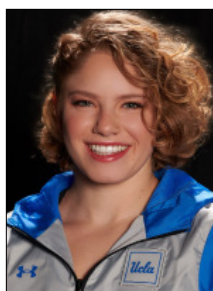
Samantha
SAKTI
(SOCK-tee)
5-0/Jr./Arcadia, Calif.



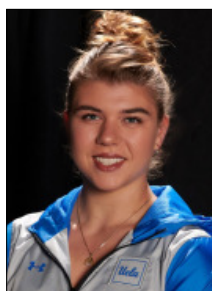
Nicole
SHAPIRO
5-1/Sr./Los Angeles, Calif.



Kalyany
STEELE
(KAH-lee-AH-nee)
5-2/So./Colorado Springs, Colo.



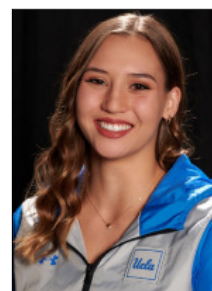
Sara
TAUBMAN
5-3/Jr./Fairfax, Calif.



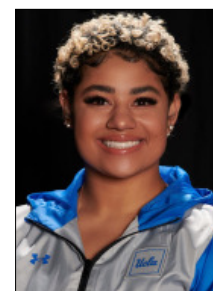
Pauline
TRATZ
(paw-LEAN-uh TRAHTZ)
5-7/Sr./Karlsruhe, Germany



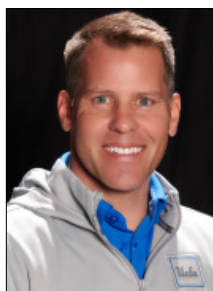
Sara
ULÍAS
(YOU-lee-US)
5-1/Fr./Thousand Oaks, Calif.



Lilia
WALLER
5-5/Sr./Santa Clarita, Calif.



Sekai
WRIGHT
(suh-KAI)
5-6/Jr./Paramount, Calif.



Chris
WALLER
Head Coach
2nd season/19th overall



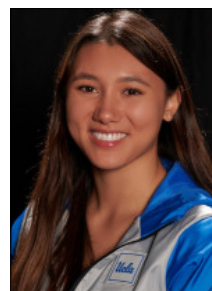
Kristina
COMFORTE
(come-FORTY)
Associate Head Coach
2nd season



Dom
PALANGE
(puh-LANGE-ee)
Assistant Coach
2nd season/6th overall



BJ
DAS
(DAHS)
Volunteer Assistant Coach
2nd season



Kyla
ROSS
Undergraduate Assistant Coach
1st season